

**SIZE TABLE**  
**WOMEN'S CLOTHING SIZE**

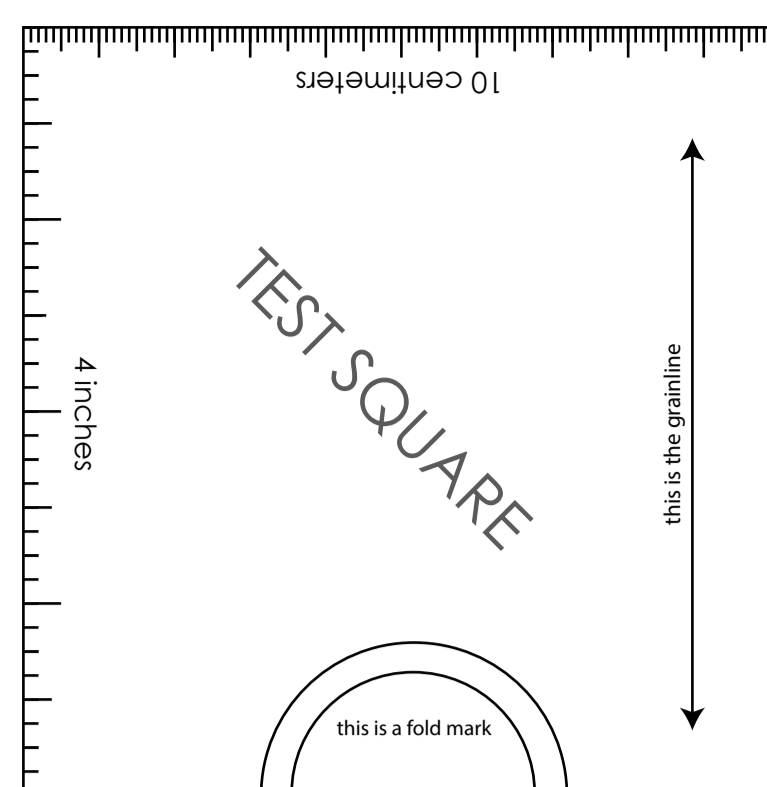
- Sizing is based on body measurements.  
- If between sizes, size up for woven fabric, size down for knit fabric.

Unit: centimeter

Size	XXS	Xs	S	M	L	XL	XXL	3XL	4XL	5XL
Bust	80	84	88	92	96	100	104	110	116	122
Waist	60	64	68	72	76	80	84	90	96	102
Hip	80	82	86	90	94	98	102	108	114	120
Cross shoulder	35	36	37	38	39	40	41	42.5	44	45.5

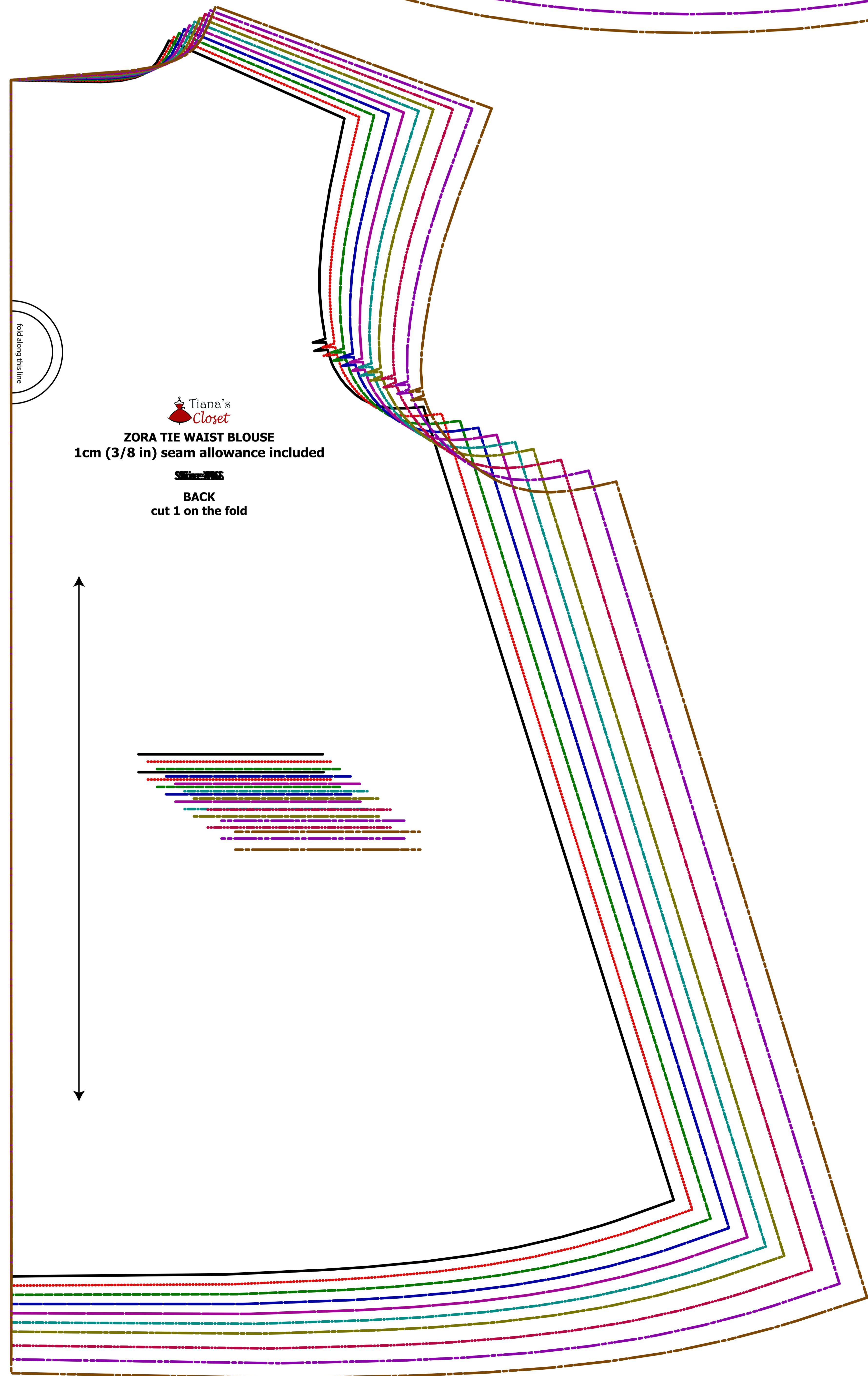
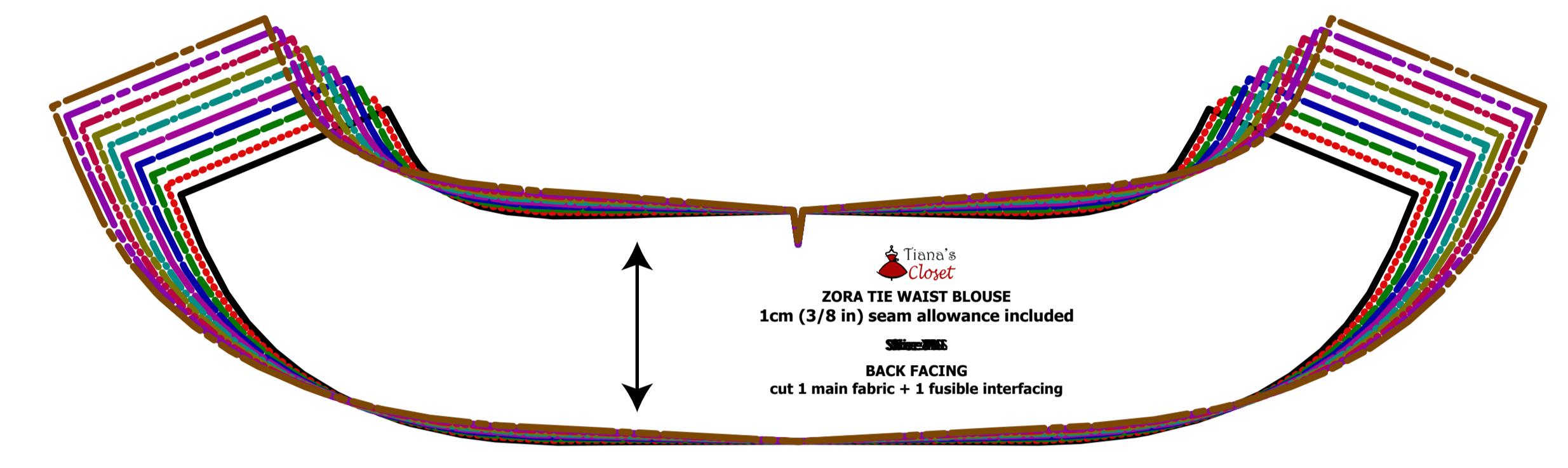
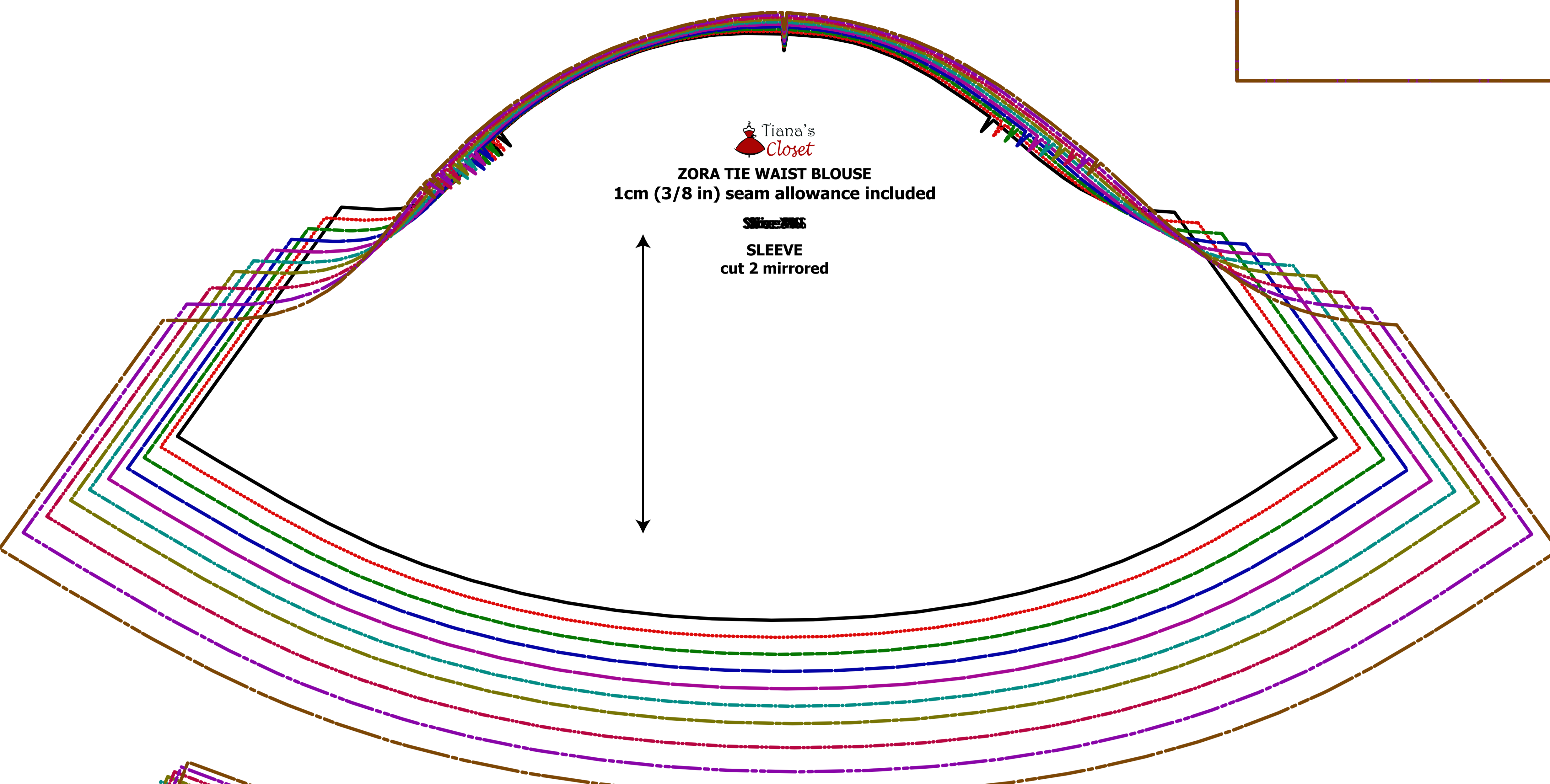
Unit: inch

Size	XXS	Xs	S	M	L	XL	XXL	3XL	4XL	5XL
Bust	31.5	33.1	34.6	36.2	37.8	39.4	40.9	43.3	45.7	48.0
Waist	23.6	25.2	26.8	28.3	29.9	31.5	33.1	35.4	37.8	40.2
Hip	31.6	32.2	33.8	35.4	37.0	38.6	40.2	42.5	44.8	47.2
Cross shoulder	13.8	14.2	14.6	15.0	15.4	15.7	16.1	16.7	17.3	17.9



**LEGEND**

SIZE XXS	-----
SIZE XS	-----
SIZE S	-----
SIZE M	-----
SIZE L	-----
SIZE XL	-----
SIZE XXL	-----
SIZE 3XL	-----
SIZE 4XL	-----
SIZE 5XL	-----



Tiana's Closet  
ZORA TIE WAIST BLOUSE  
1cm (3/8 in) seam allowance included  
FRONT FACING  
cut 2 main fabric + 2 fusible interfacings