

**WOMEN'S CLOTHING SIZE**

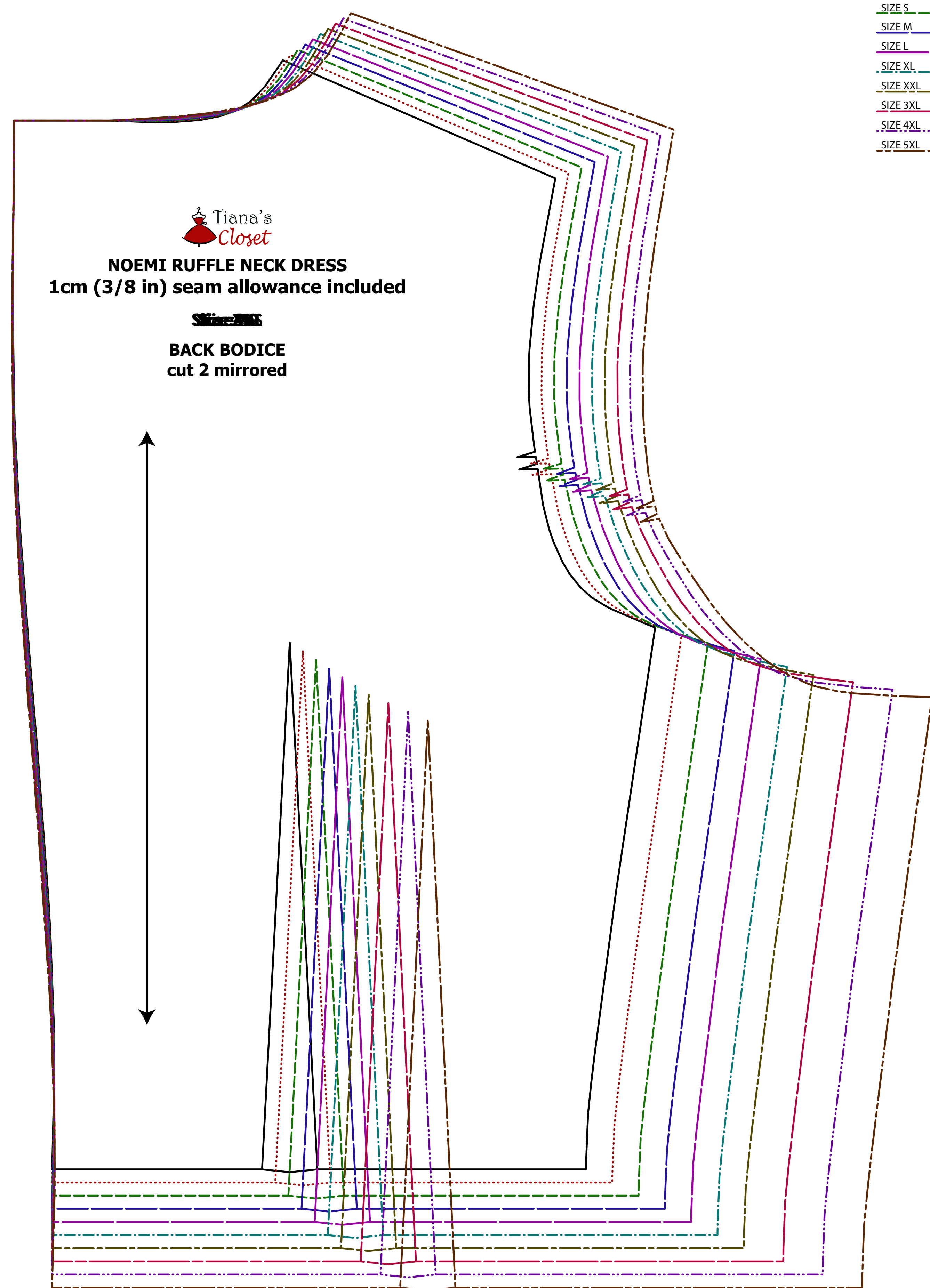
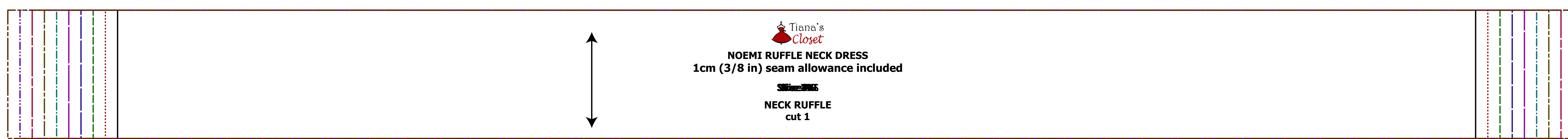
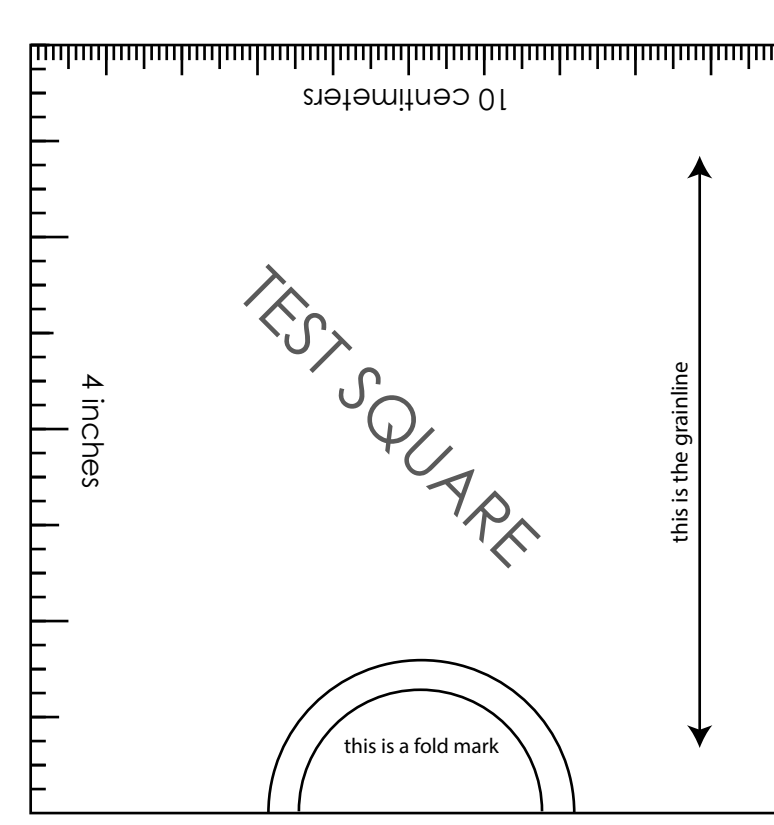
- Sizing is based on body measurements.  
- If between sizes, size up for woven fabric, size down for knit fabric.

Unit: centimeter

Size	XS	S	M	L	XL	XXL	3XL	4XL	5XL
Bust	80	84	88	92	96	100	104	108	112
Waist	60	64	68	72	76	80	84	90	92
Hip	86	90	94	98	102	106	110	114	118
Cross Shoulder	35	36	37	38	39	40	41	42.5	44

Unit: inch

Size	XS	S	M	L	XL	XXL	3XL	4XL	5XL
Bust	31.5	33.1	34.6	35.2	37.8	39.4	40.9	42.5	44.1
Waist	23.6	25.2	26.8	28.3	29.9	31.5	33.1	35.4	36.2
Hip	34.0	35.4	37.0	38.6	40.2	41.7	43.3	45.3	46.9
Cross Shoulder	13.8	14.2	14.6	15.0	15.4	15.7	16.1	16.7	17.3



**LEGEND**

SIZE XXX

SIZE XS

SIZE S

SIZE M

SIZE L

SIZE XL

SIZE XXL

SIZE 3XL

SIZE 4XL

SIZE 5XL

