

**SIZE TABLE**  
**TIANA'S CLOSET SEWING PATTERNS**

| Size code | XXS | XS | S  | M  | L  | XL | XXL | 3XL | 4XL | 5XL |
|-----------|-----|----|----|----|----|----|-----|-----|-----|-----|
| Bust      | 30  | 34 | 36 | 38 | 40 | 42 | 44  | 46  | 48  | 50  |
| Waist     | 24  | 26 | 28 | 30 | 32 | 34 | 36  | 38  | 40  | 42  |
| Hip       | 34  | 36 | 38 | 40 | 42 | 44 | 46  | 48  | 50  | 52  |

**PRINTING INSTRUCTIONS**

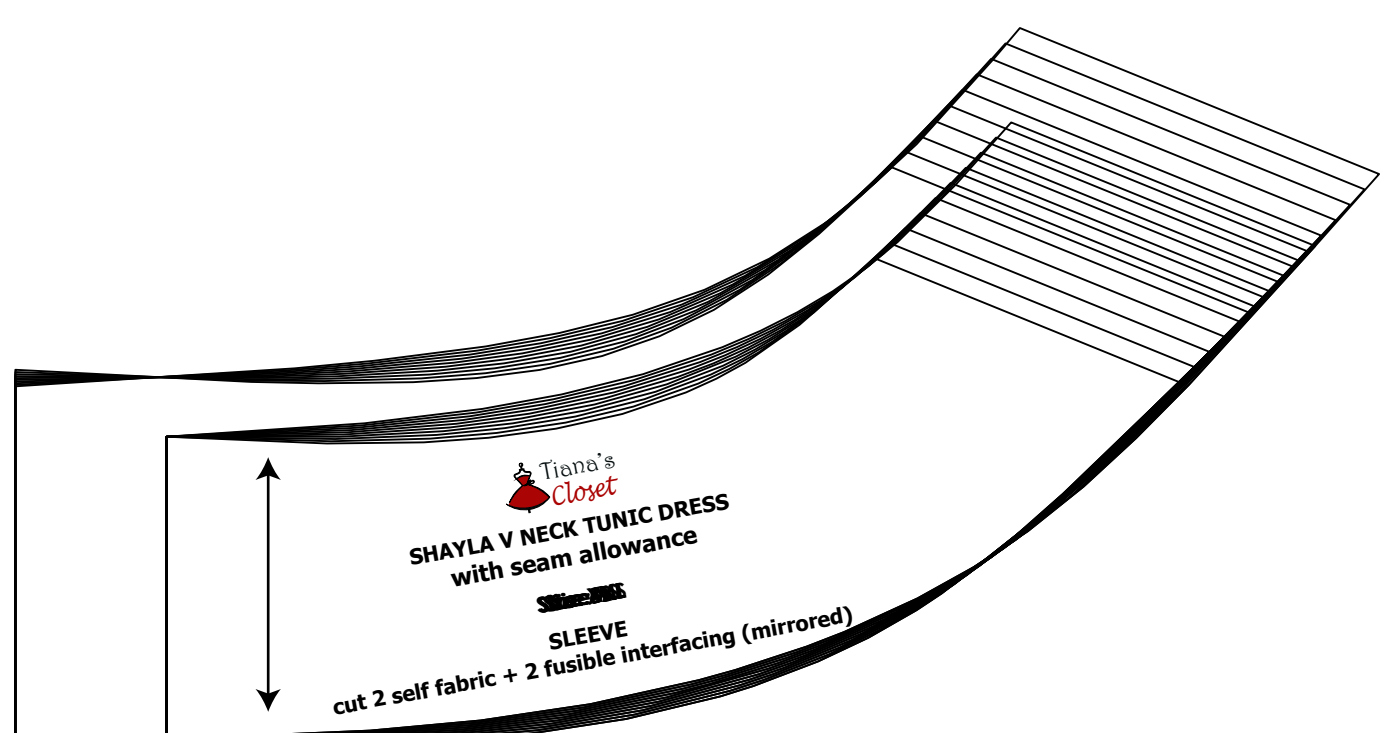
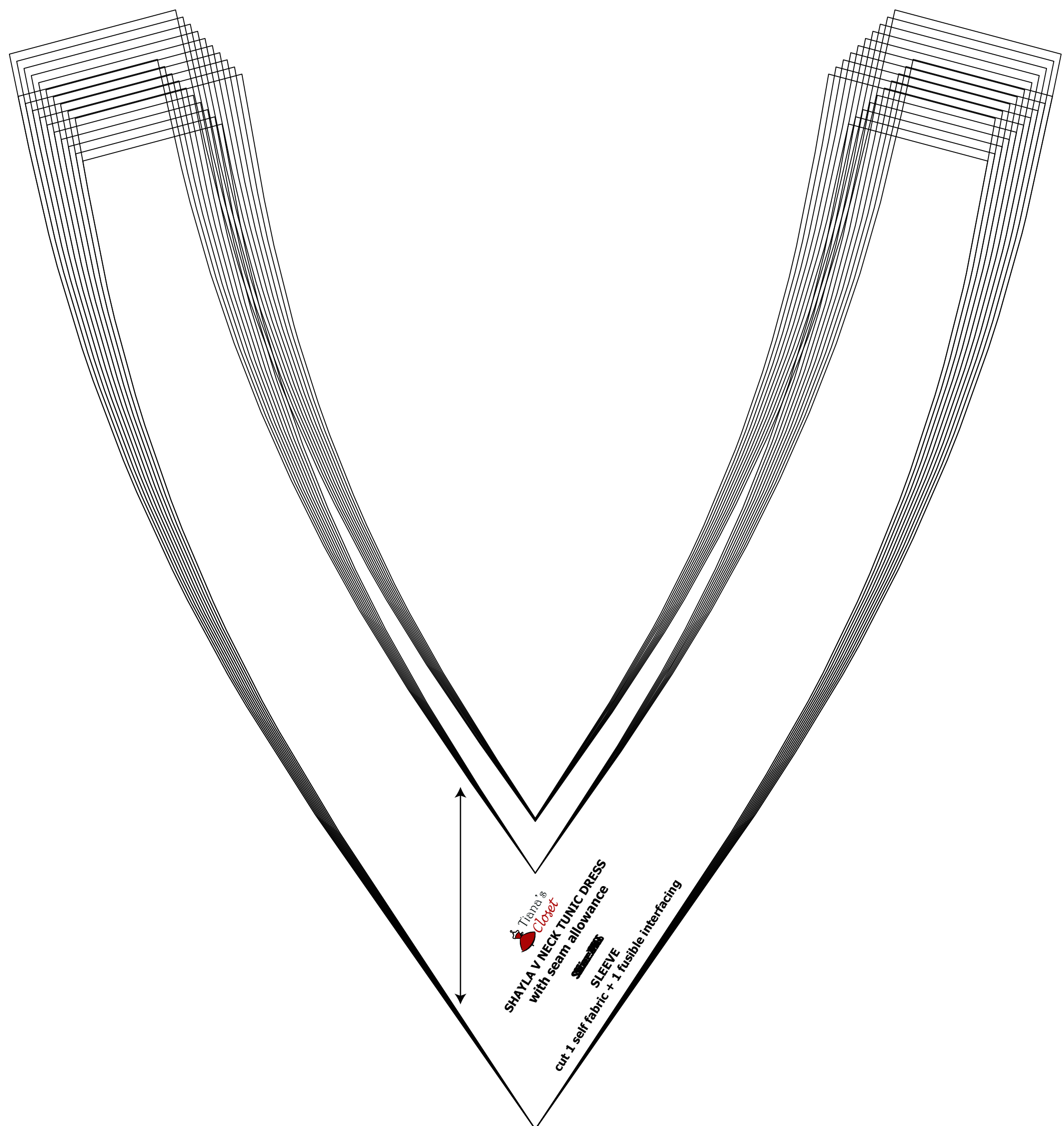
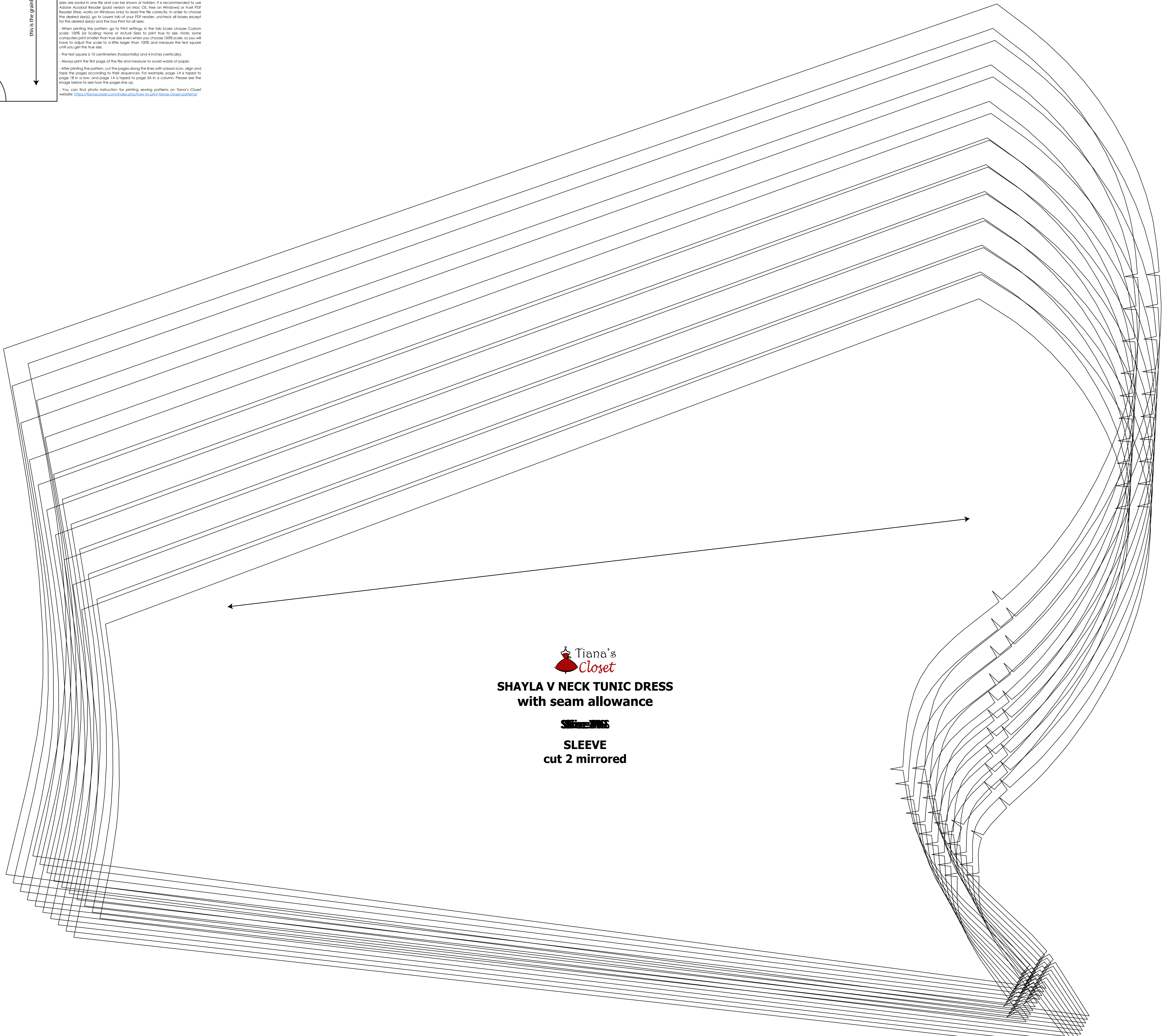
Tiana's Closet sewing patterns are made in standard PDF format, which means all files are saved in one file and can be viewed or printed. It is recommended to use Adobe Acrobat Reader (available on Mac, PC, and on Windows) to view and print PDF files. Please do not use other software to view or print PDF files, as they may not print correctly. In order to check the accuracy of your print, please print the test square on the same paper and in the same color as the pattern.

When printing the pattern, go to Print settings. In the top corner, choose Custom color: CMYK. In the bottom corner, choose Actual Size to print. To save time, some computers print smaller than the size when you choose 100% scale. To see if this is the case, print the test square. It should be 10cm (4 inches) wide and 10cm (4 inches) high. If it is not, you will need to adjust the scale to 100% in the printer's settings and choose the test square option to get the full size.

The test square is 10 centimeters (4 inches) wide and 4 inches (10 centimeters) high. Always print the test square of the file and measure to avoid waste of paper.

After printing the pattern, cut the paper along the lines with a sharp pair of scissors and keep the paper according to the instructions for assembly. Page 1A is taped to page 1B in row and page 1B is taped to page 2A in a column. Please see the page below to see how the pages fit.

You can find photo instruction for printing sewing patterns on Tiana's Closet website: <https://www.tianascloset.com/2018/05/15/how-to-print-sewing-patterns/>

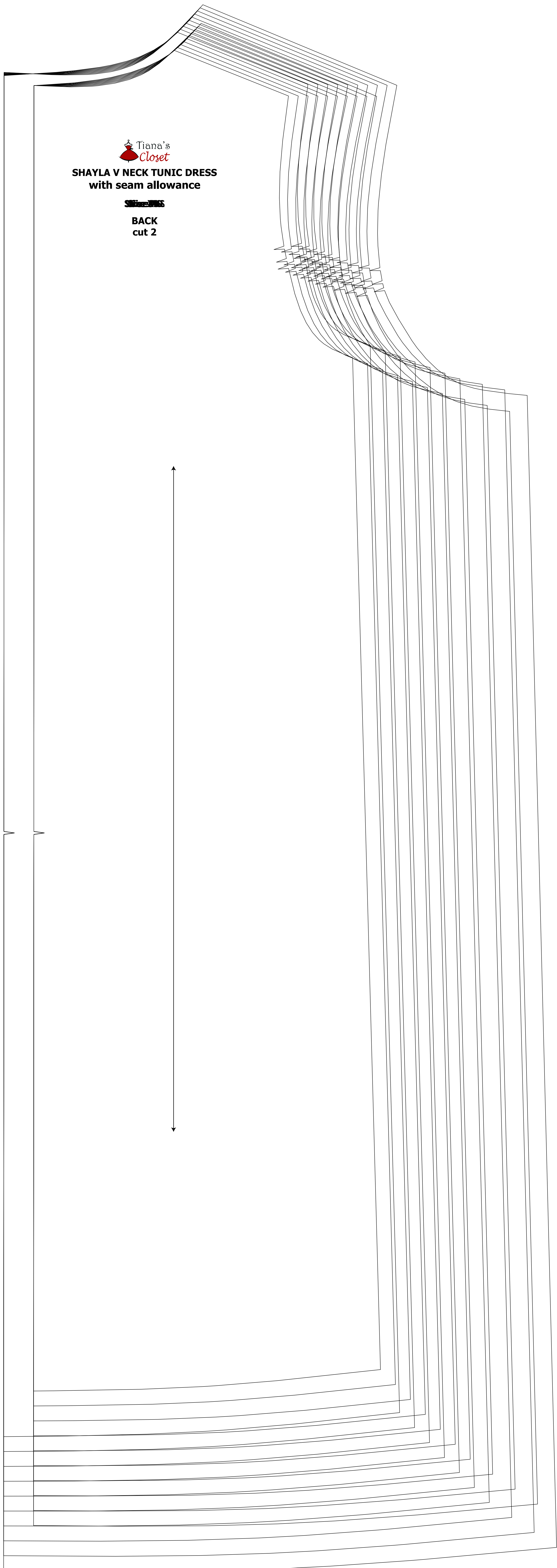




SHAYLA V NECK TUNIC DRESS  
with seam allowance



BACK  
cut 2



SHAYLA V NECK TUNIC DRESS  
with seam allowance



FRONT  
cut 1 on fold

