

SIZE TABLE
TIANA'S CLOSET SEWING PATTERNS

Size code	XXS	XS	S	M	L	XL	XXL	3XL	4XL	5XL
Bust	centerline 30	34	36	38	42	46	50	54	58	62
Waist	centerline 24	26	28	30	34	38	42	46	50	54
Hip	centerline 34	36	38	40	44	48	52	56	60	64
Leg	centerline 22	24	26	28	30	34	38	42	46	50
Arm	centerline 18	20	22	24	26	30	34	38	42	46

PRINTING INSTRUCTIONS

Tiana's Closet sewing patterns are made in unisex US system, which means all sizes are listed in one file and can be shown or hidden. It is recommended to use Adobe Acrobat Reader (open on Mac, or free on Windows or Linux) to view the patterns. When you receive only to view the file correctly, in order to choose the desired size(s), go to lower left of your PDF reader window and choose the desired size(s) from the list of sizes.

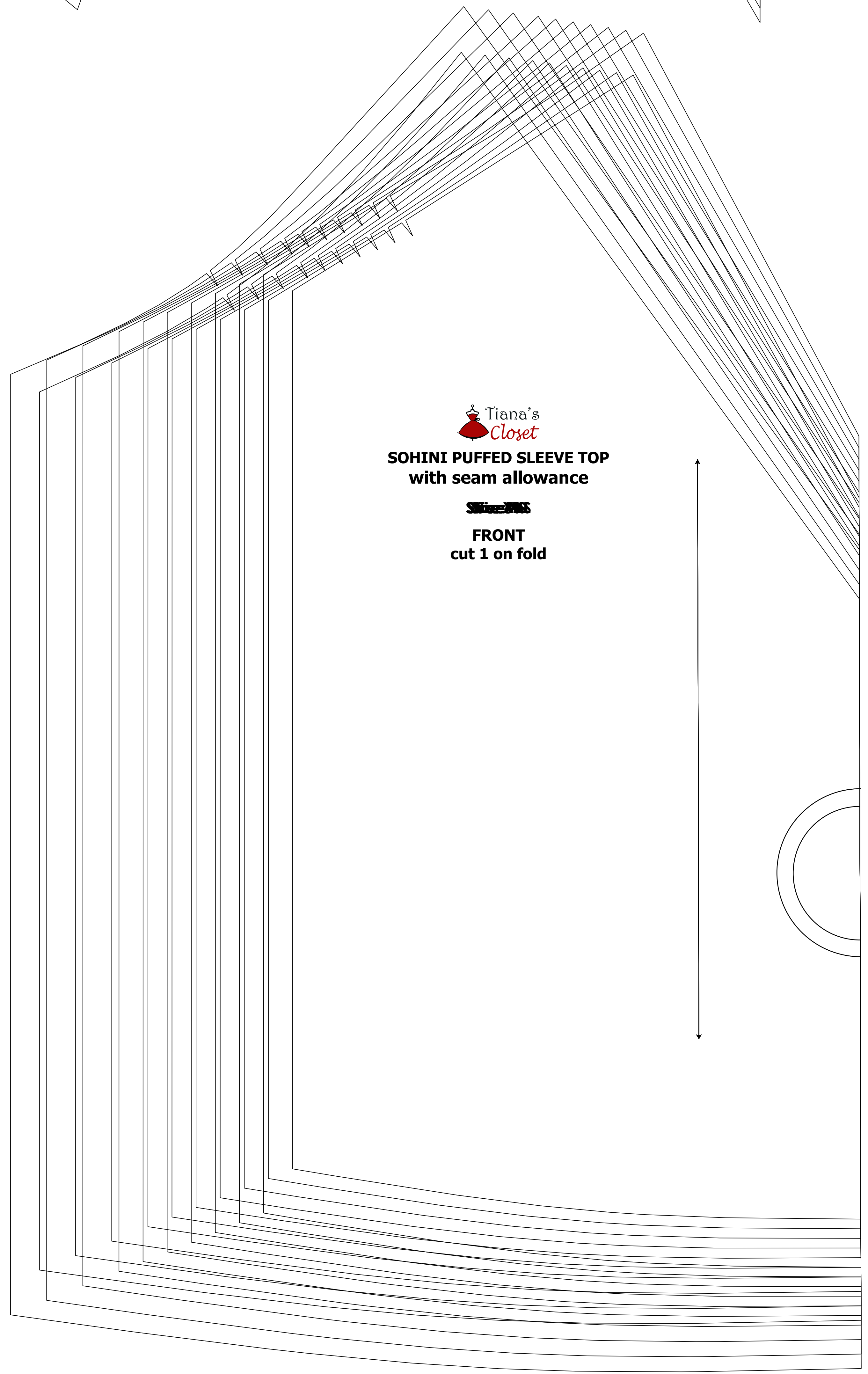
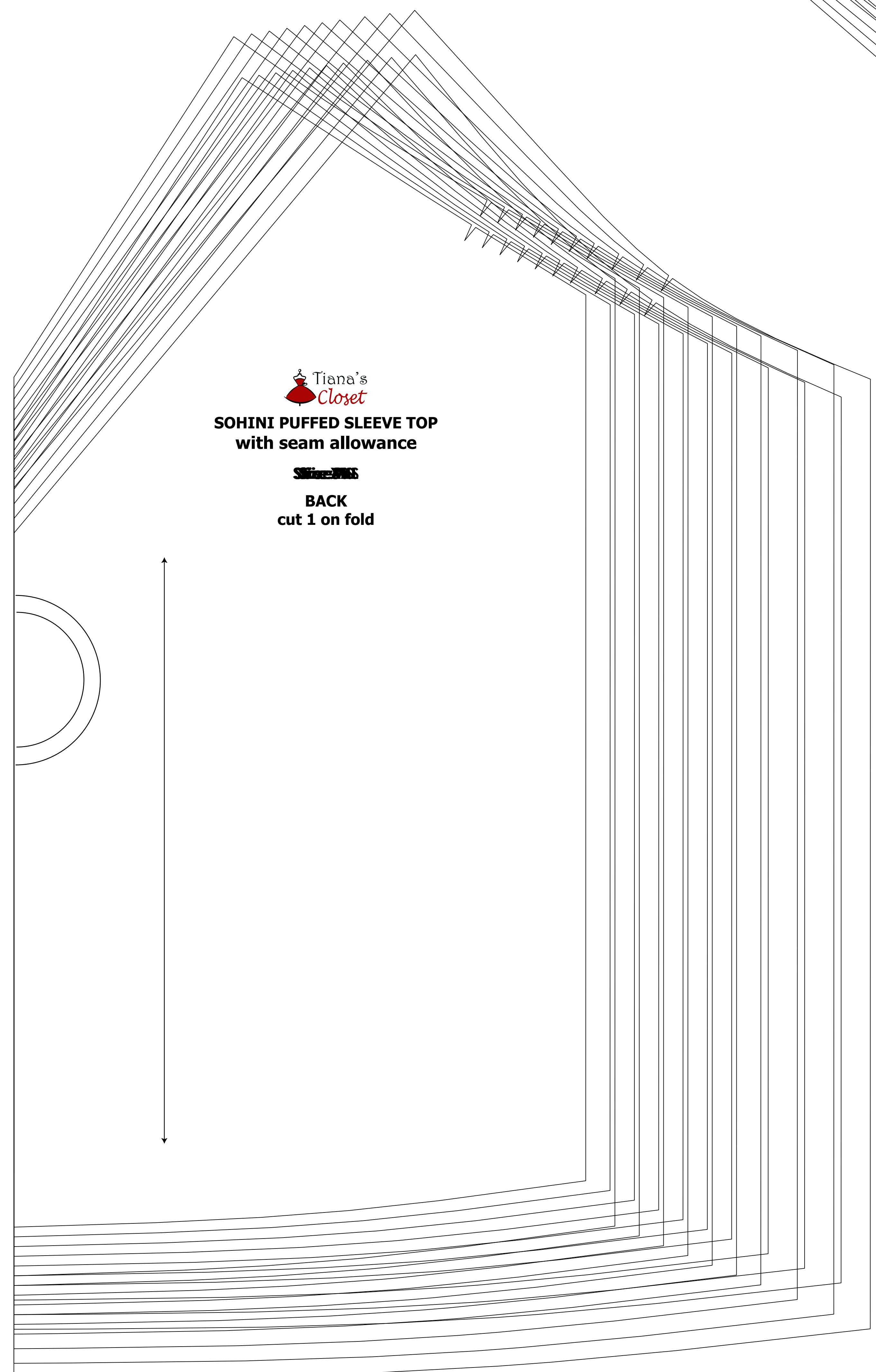
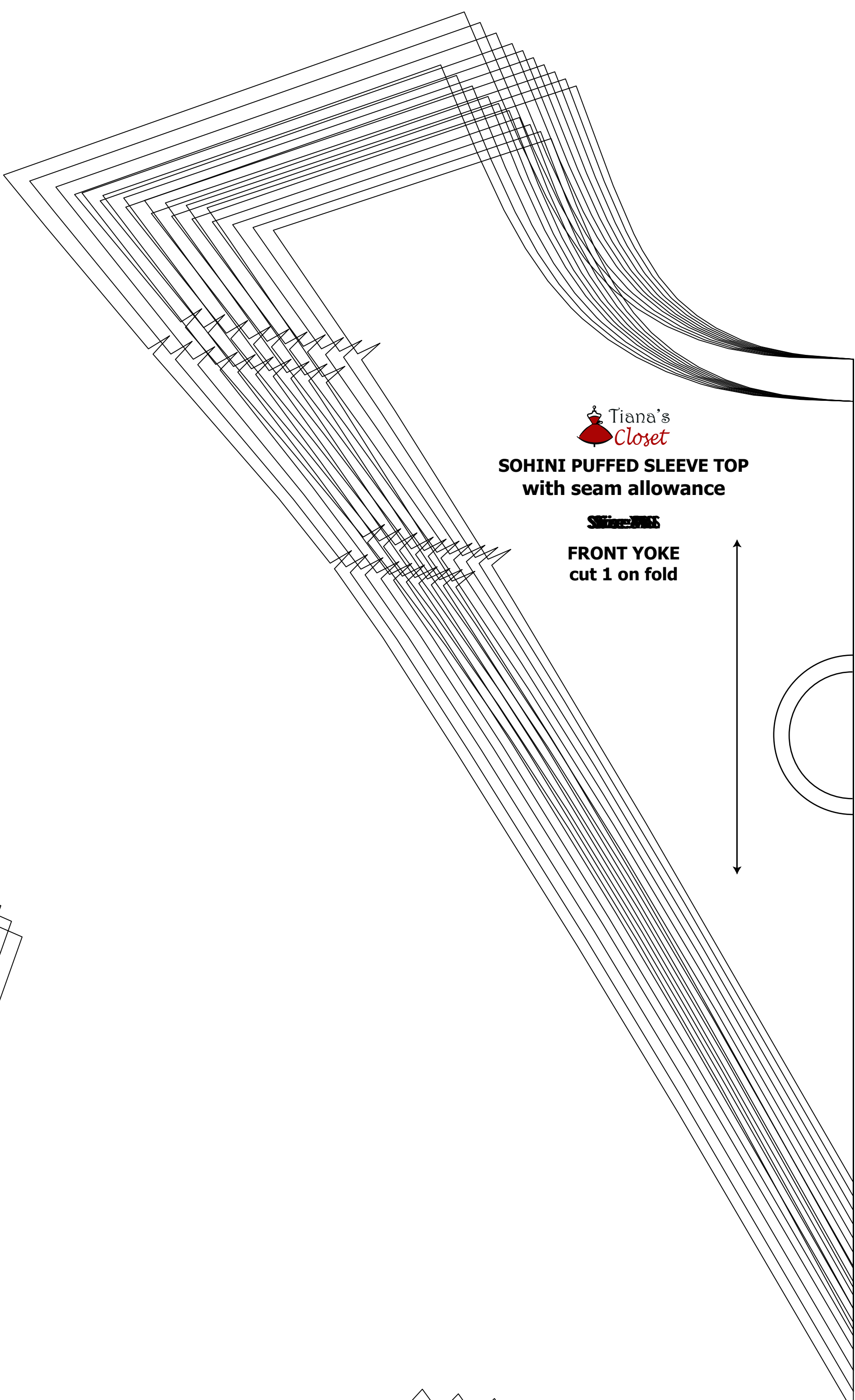
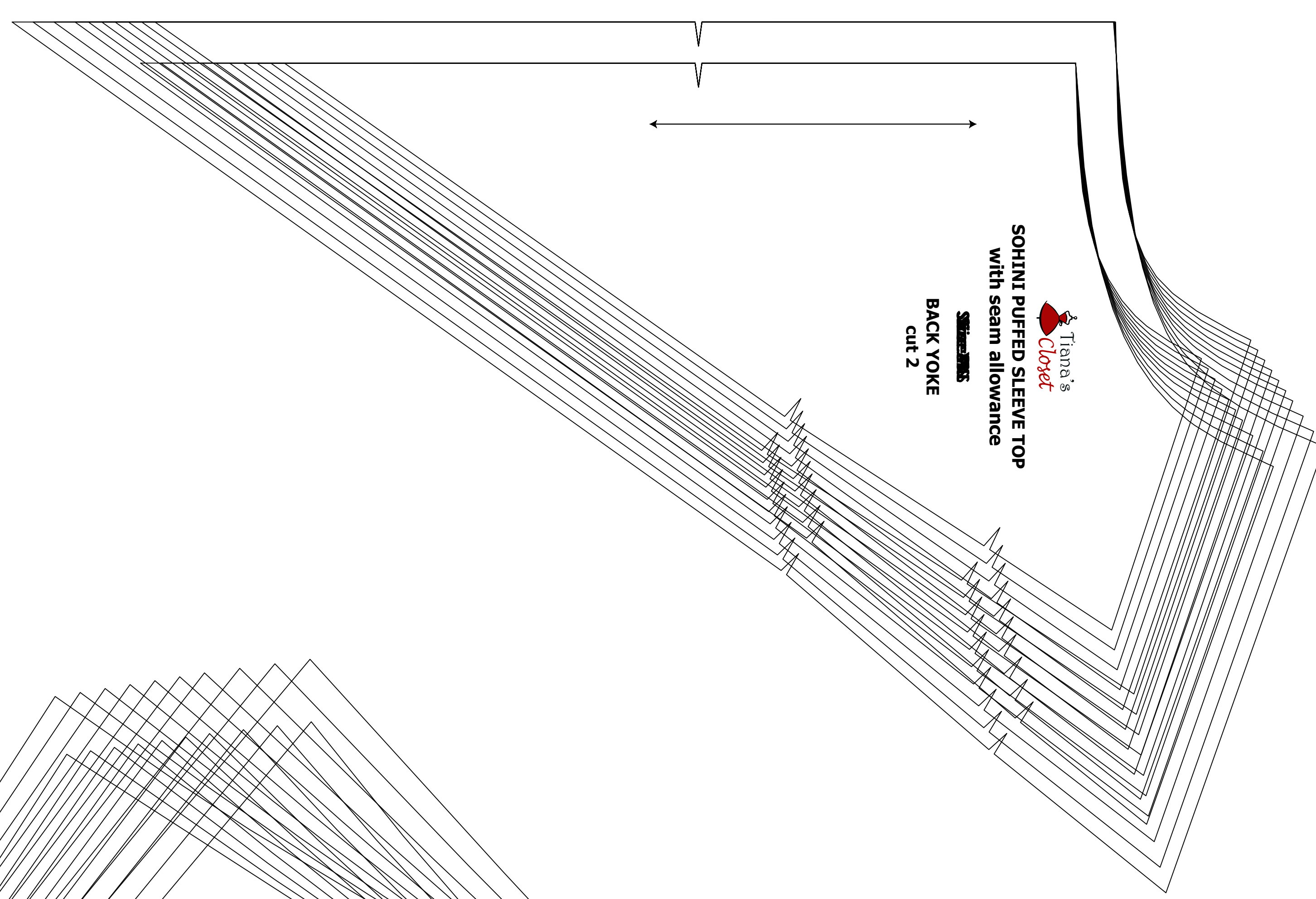
When printing the pattern, go to Print settings, in the Top Scale choose Custom scale 100% for Standard Printer or Actual Size for print the file with some computer print smaller than the size sheet when you choose 100% scale, so you will have to adjust the scale to a larger than 100% and measure the test square until you get the true size.

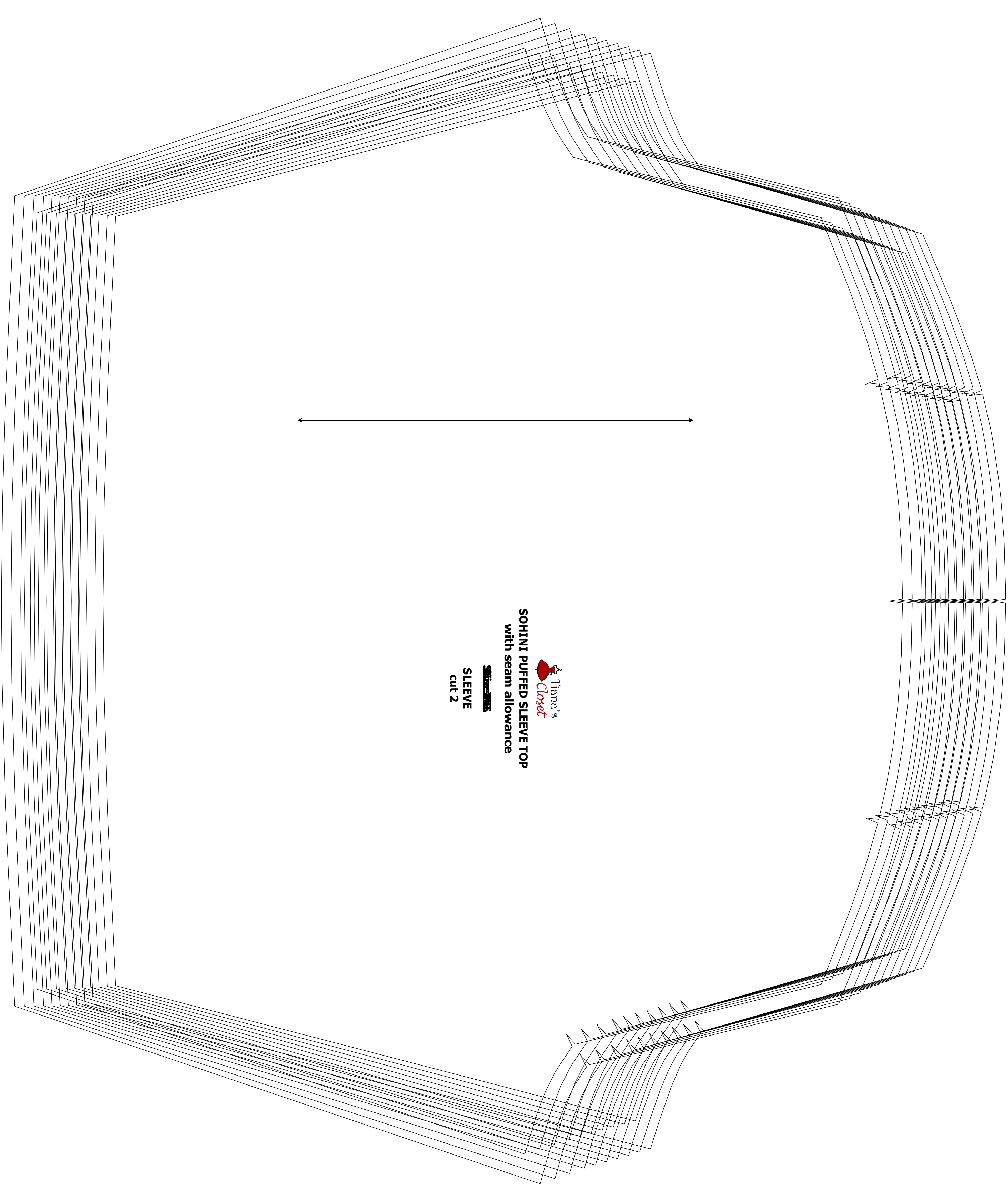
The test square is 10 centimeters (approximately) and 4 inches (approximately).

Always print the first page of the file and measure to avoid waste of paper.

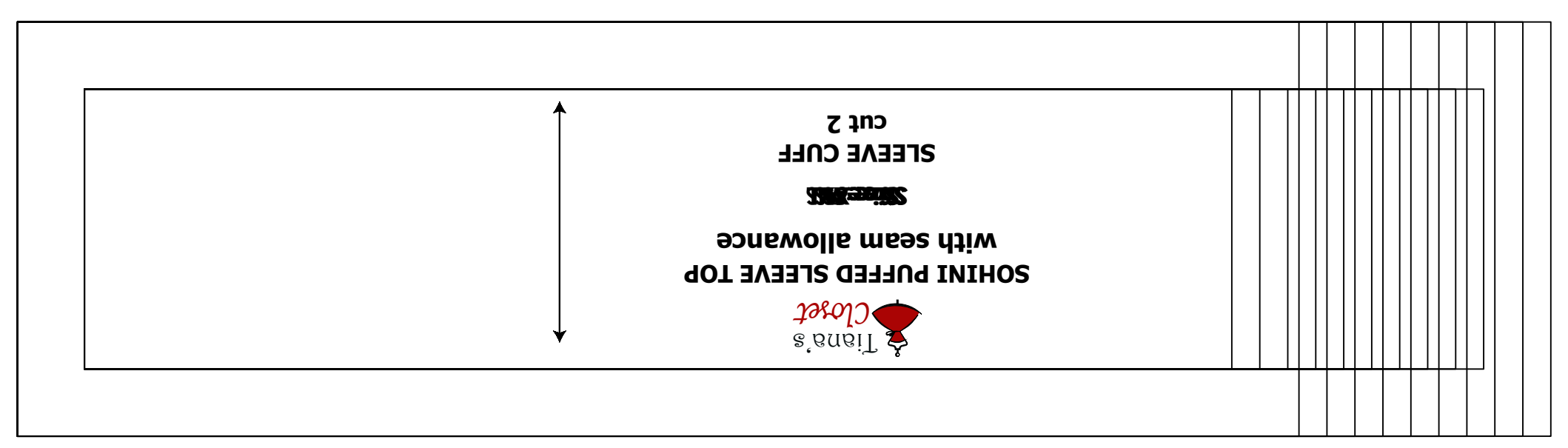
After printing the pattern, cut the paper along the lines with clean cuts, aligned to the paper according to their sequence. The pattern page is a folded page. If it is not, and page is a folded page, it is a pattern. Please see the image below to see how the page line is.

This can be a good instruction for printing sewing patterns on Tiana's Closet website: <https://www.tianascloset.com/faq>






SOHINI PUFFED SLEEVE TOP
With seam allowance
SLEEVE
cut 2




SOHINI PUFFED SLEEVE TOP
With seam allowance
SLEEVE CUFF
cut 2