

SIZE TABLE
TIANA'S CLOSET SEWING PATTERNS

Size code	XS	S	M	L	XL	XXL	3XL	4XL	5XL
Bust	30	34	36	38	40	42	44	46	48
Waist	24	26	28	30	32	34	36	38	40
Hip	34	36	38	40	42	44	46	48	50

PRINTING INSTRUCTIONS

Rono's Closet sewing patterns are made in standard PDF format, which means all files are saved in one file and can be shown or hidden. It is recommended to use Adobe Acrobat Reader (paid version or free CC) to view or print the PDF. Adobe Reader works on Windows only to avoid the file corrupts. In order to check the document status, go to 'Tools' tab of your PDF reader, choose all cover needed for the pattern and print the file out of them.

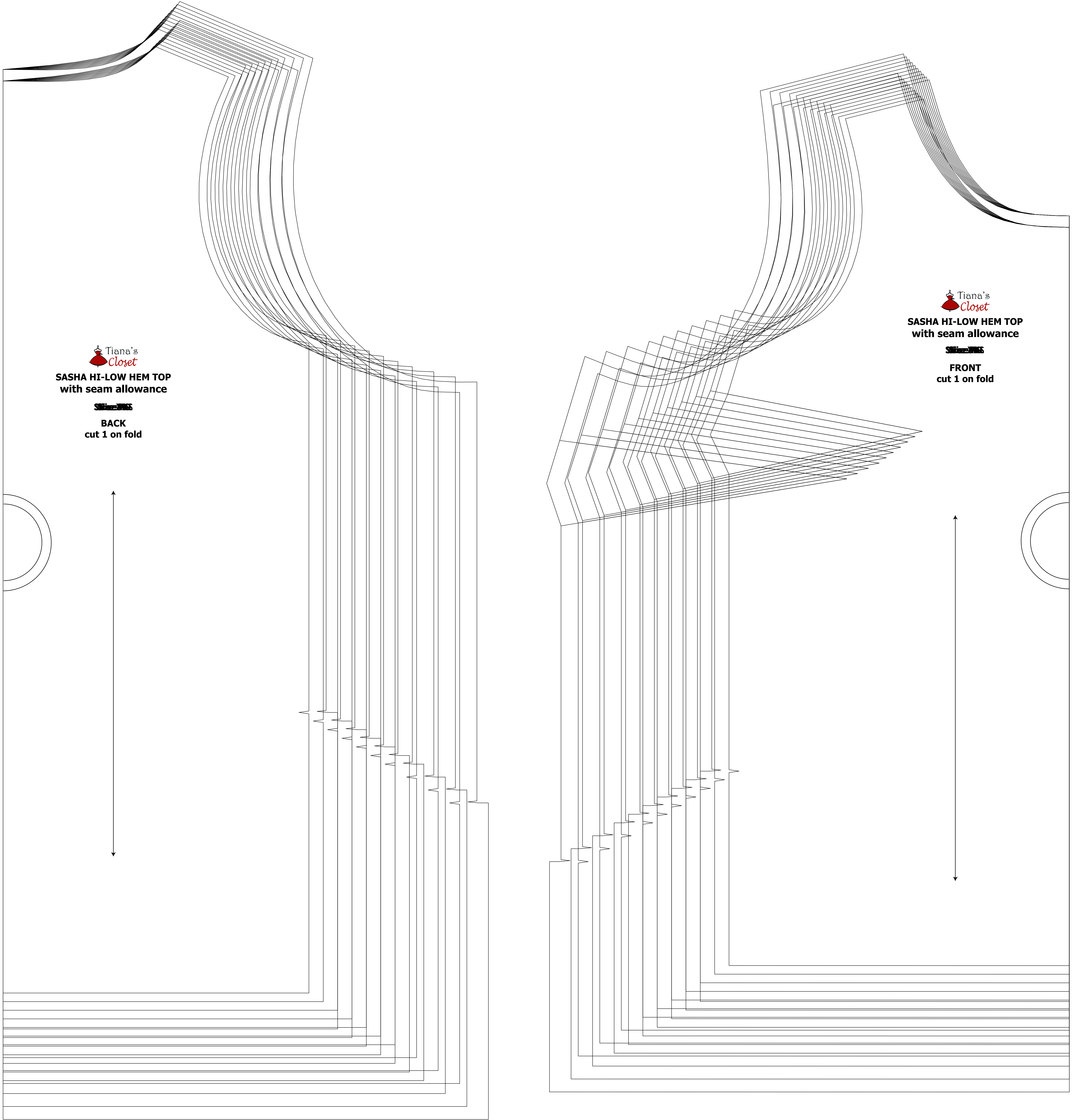
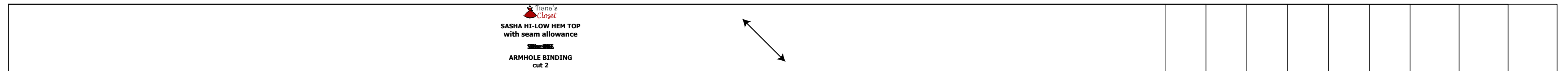
When printing the pattern, go to 'Print' settings. In the 'Job' section choose 'Custom' option. Under 'Scaling' choose 'Actual Size' to print the file. In some cases, some computers print smaller than the size when you choose 100% scale, so you will have to adjust the scale to a bit larger than 100% and measure the 'test square' until you get the 1x4 size.

The pattern pieces are centered horizontally and 4 inches vertically.

Always print the first page of the file and measure to avoid waste of paper.

After printing the pattern, cut the paper along the lines with scissors, edge and leave the grainline according to the instructions for separate pieces. It is tagged by page 18 in the front page. It is tagged by page 24 in the column. Please see the page below to see how the page links.

You can find photo instruction for printing sewing patterns on Rono's Closet website: <https://www.ronoscloset.com/en/learn-how-to-print-sewing-patterns>



Tiana's Closet
SASHA HI-LOW HEM TOP
with seam allowance
BACK
cut 1 on fold

Tiana's Closet
SASHA HI-LOW HEM TOP
with seam allowance
FRONT
cut 1 on fold