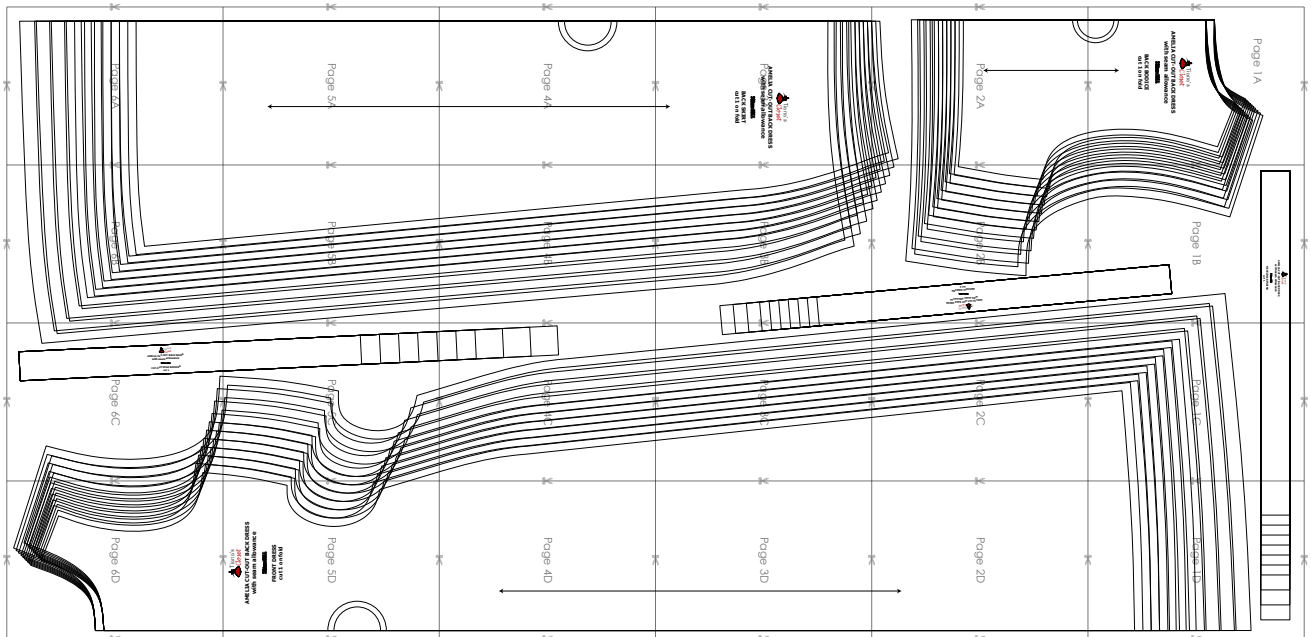


SIZE TABLE
TIANA'S CLOSET SEWING PATTERNS

Size code	XXS	XS	S	M	L	XL	XXL	3XL	4XL	5XL
Bust	centimeter	80	84	88	92	96	100	104	110	122
	inch	31.5	33.1	34.6	36.2	37.8	39.4	40.9	43.3	47.2
Waist	centimeter	60	64	68	72	76	80	84	90	102
	inch	23.6	25.2	26.8	28.3	29.9	31.5	33.1	35.4	40.2
Hip	centimeter	88	92	96	100	104	108	112	118	130
	inch	34.6	36.2	37.8	39.4	40.9	42.5	44.1	46.5	52.0

PRINTING INSTRUCTIONS

- Tiana's Closet sewing patterns are made in Layered PDF format, which means all sizes are saved in one file and can be shown or hidden. It is recommended to use Adobe Acrobat Reader (paid version on Mac OS, free on Windows) or Foxit PDF Reader (free, works on Windows only) to read the file correctly. In order to choose the desired size(s), go to Layers tab of your PDF reader, uncheck all boxes except for the desired size(s) and the box Print for all sizes.
- When printing the pattern, go to Print settings, in the tab Scale choose Custom scale: 100% (or Scaling: None or Actual Size) to print true to size. Note: some computers print smaller than true size even when you choose 100% scale, so you will have to adjust the scale to a little larger than 100% and measure the test square until you get the true size.
- The test square is 10 centimeters (horizontally) and 4 inches (vertically).
- Always print the first page of the file and measure to avoid waste of paper.
- After printing the pattern, cut the pages along the lines with scissors icon, align and tape the pages according to their sequences. For example, page 1A is taped to page 1B in a row, and page 1A is taped to page 2A in a column. Please see the image below to see how the pages line up.
- You can find photo instruction for printing sewing patterns on Tiana's Closet website: <https://tianas-closet.com/index.php/how-to-print-tianas-closet-patterns/>



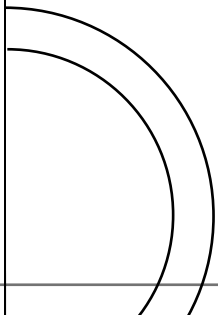
Page 1A



**AMELIA CUT-OUT BACK DRESS
with seam allowance**

~~SIZE: XS~~

**BACK BODICE
cut 1 on fold**



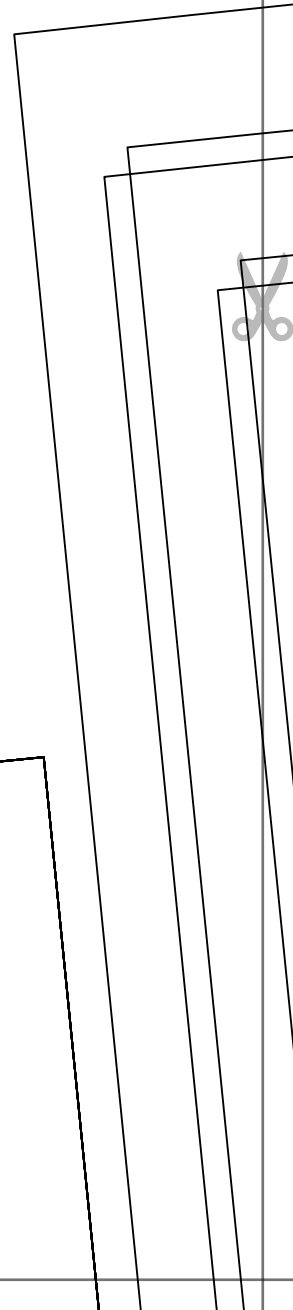
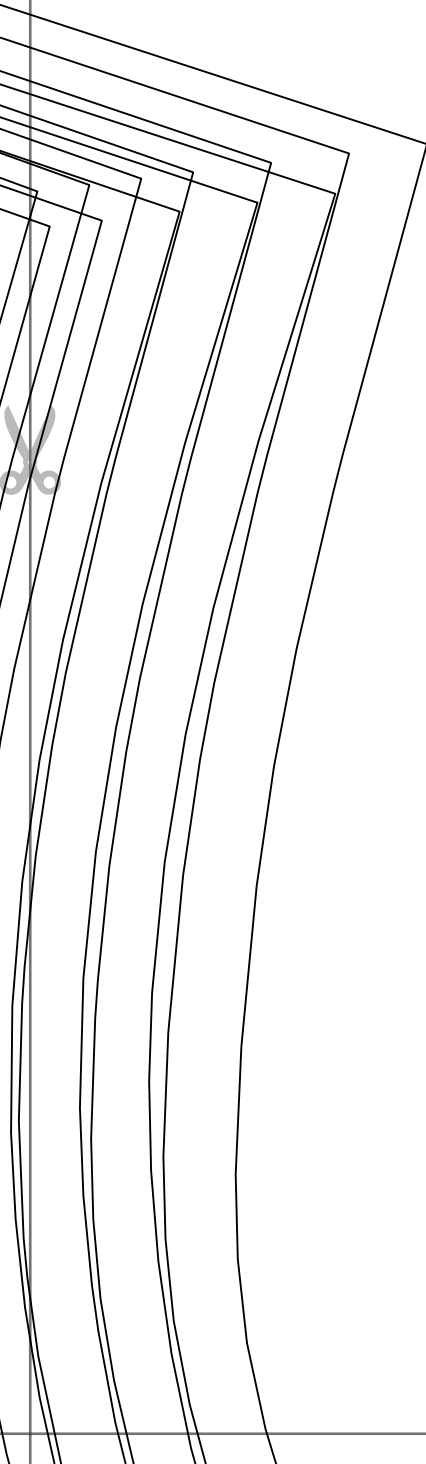


Tiana's
Closet
AMELIA CUT-OUT BACK DRESS
with seam allowance

~~SIZE: 20-22~~

NECKLINE BINDING
cut 1

Page 1B





Page 1C



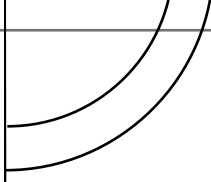
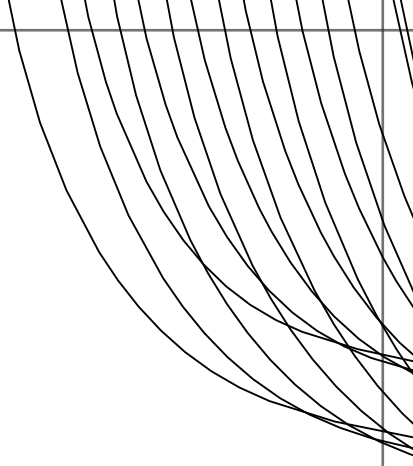


--	--	--	--	--	--	--	--	--	--	--

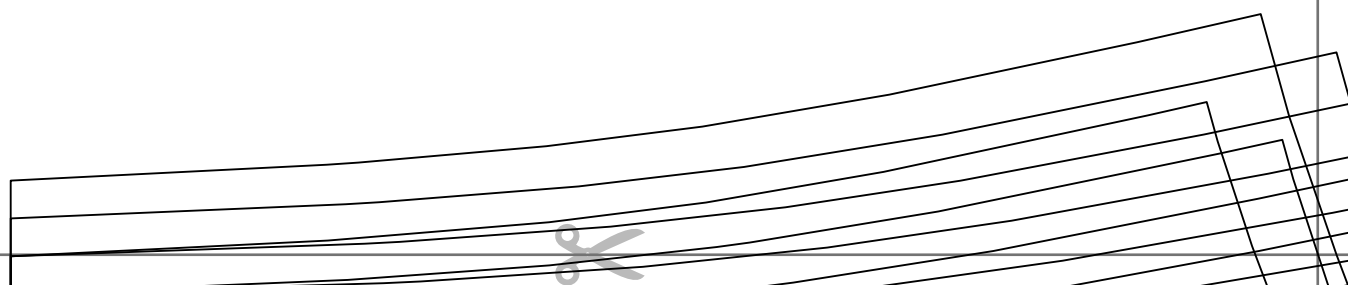
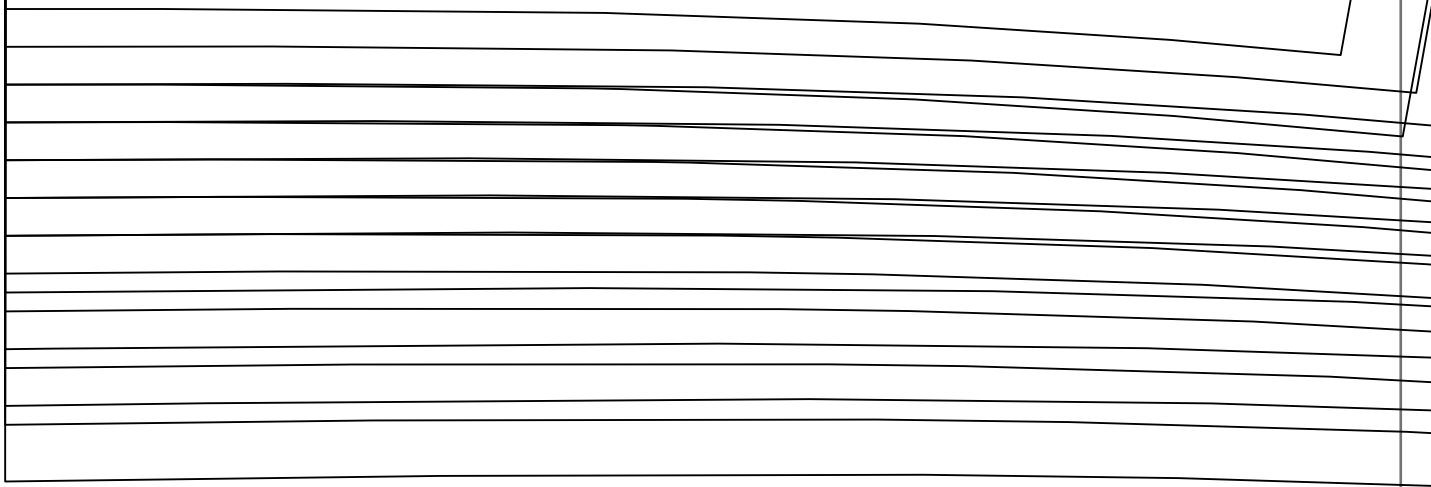


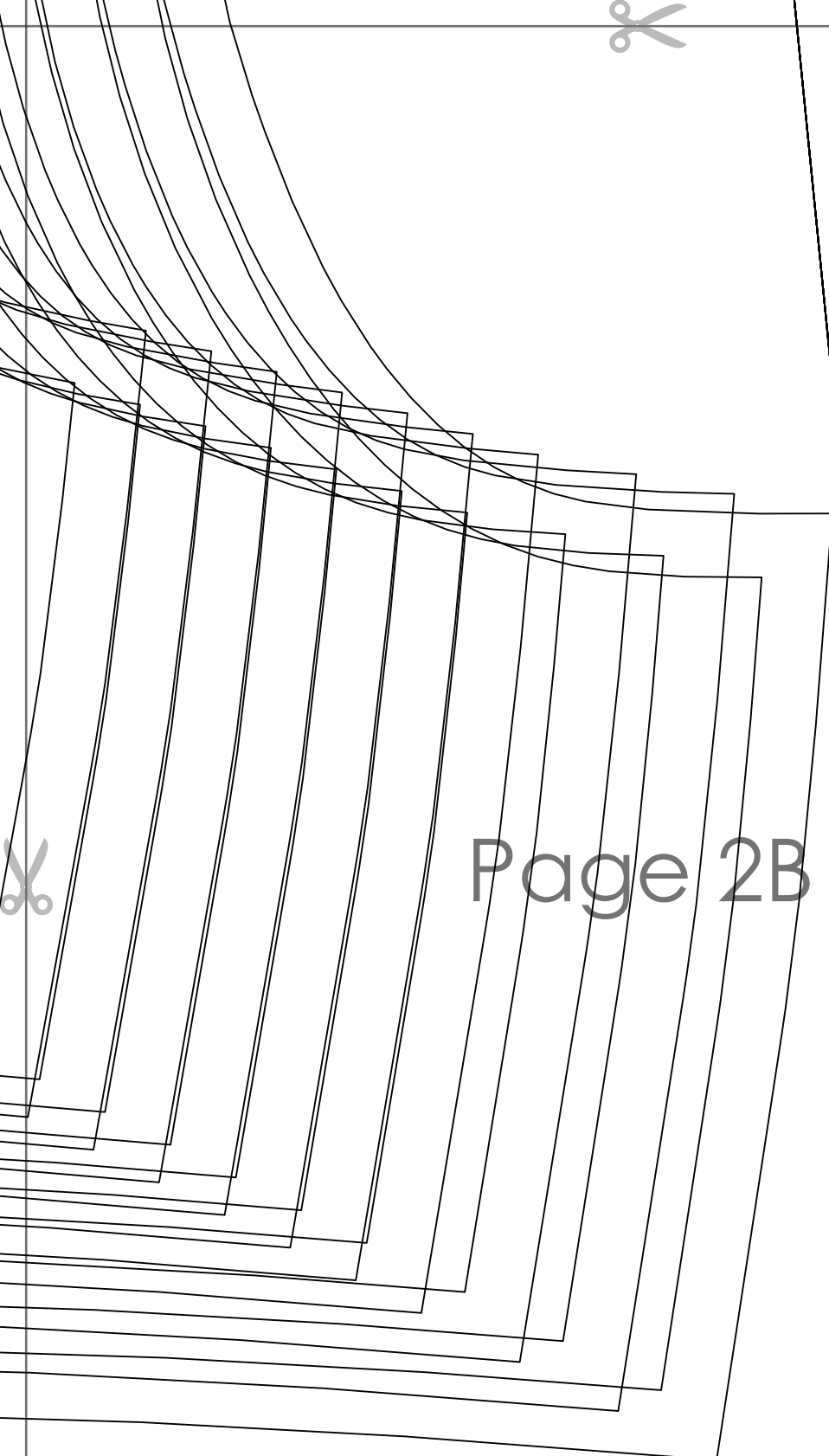
Page 1D





Page 2A

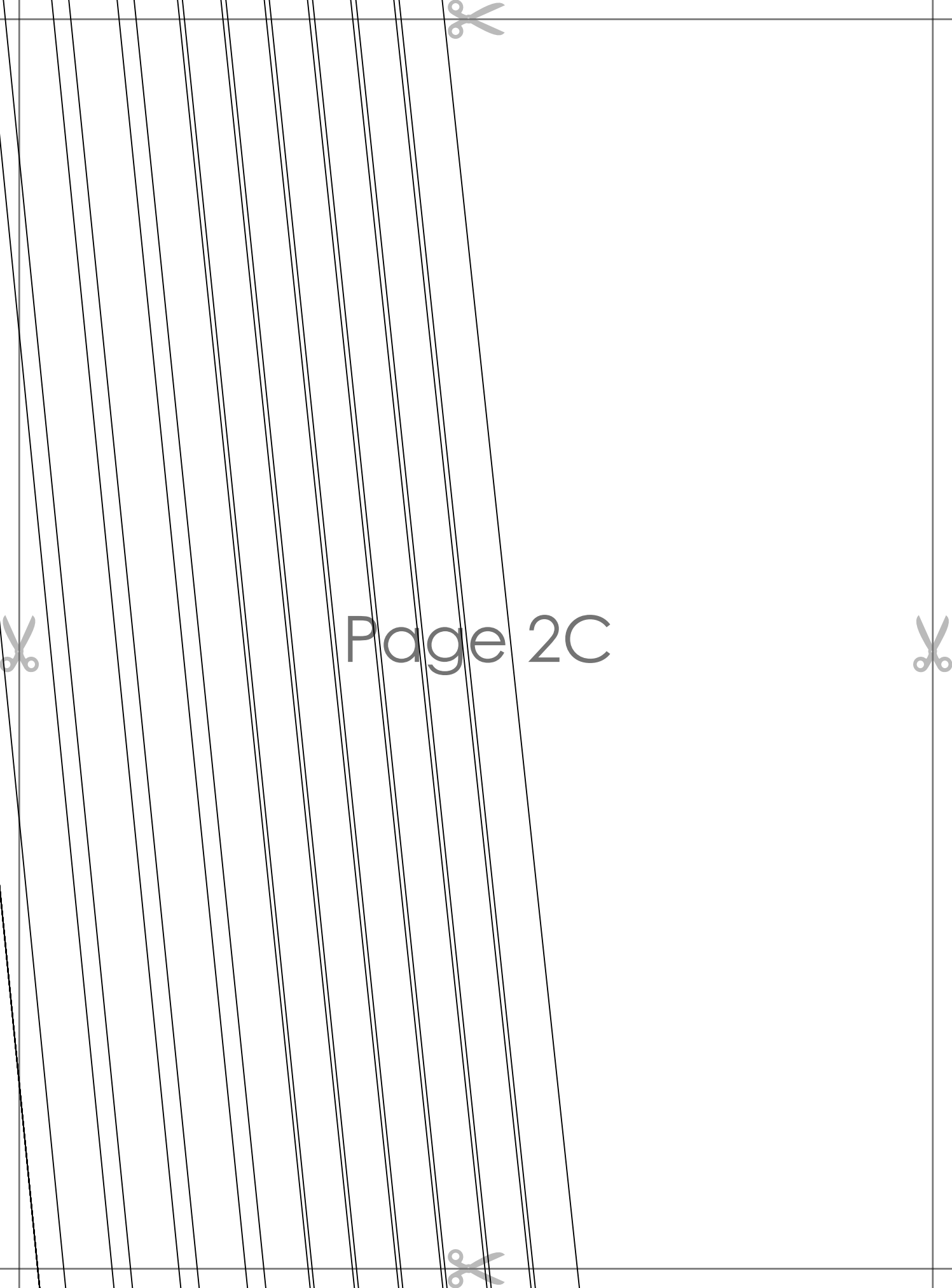




Page 2B



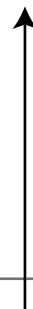
AMELIA CUT-OUT BACK DRESS
with seam allowance
~~cut 1~~
ARMHOLE BINDING
cut 2



Page 2C



Page 2D



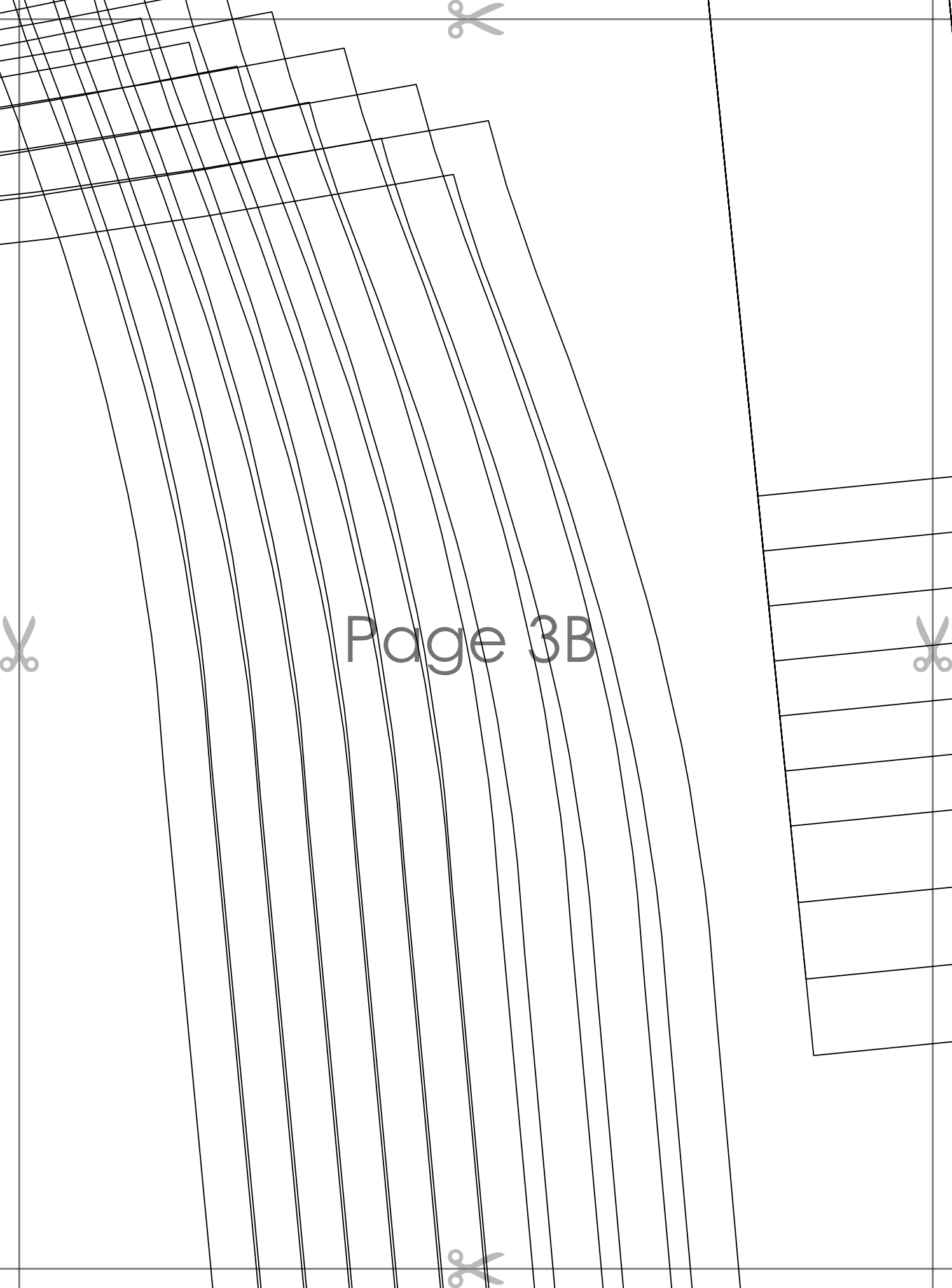


AMELIA CUT-OUT BACK DRESS
with seam allowance

~~Size 3A~~

BACK SKIRT
cut 1 on fold





Page 3B

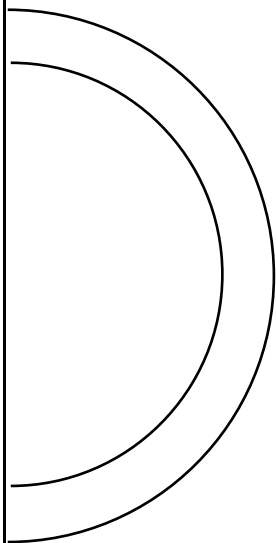


Page 3C



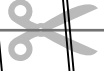
Page 3D





Page 4A





Page 4B







Page 4C



Page 4D





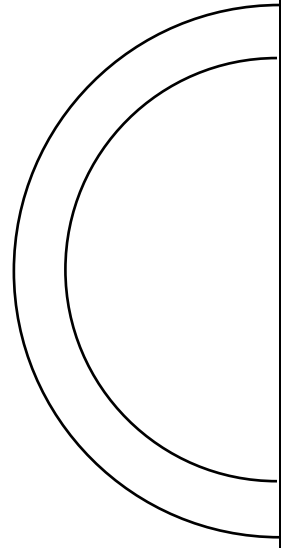
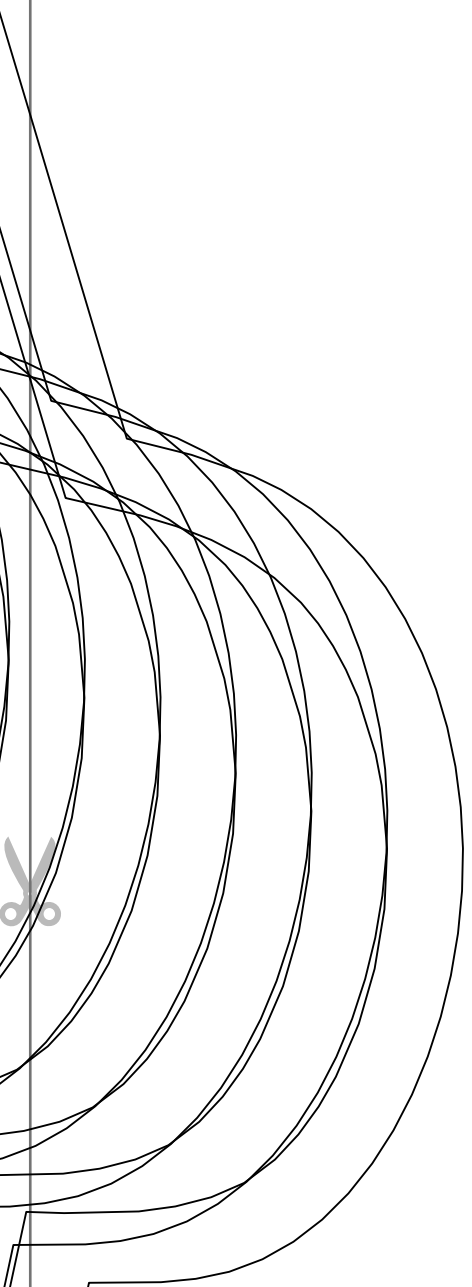
Page 5A



Page 5B



Page 5C



Page 5D



AMELIA CUT-OUT BACK DRESS
 with seam allowance
~~STAY-FLAT~~
FRONT DRESS
 cut 1 on fold





Page 6A





Page 6B



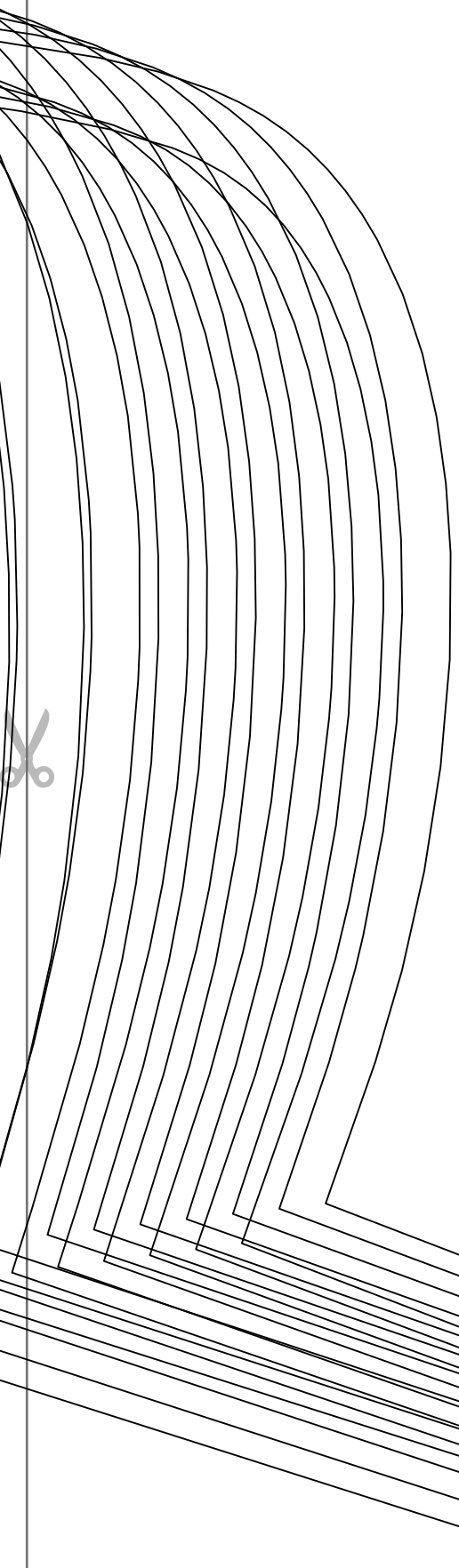


AMELIA CUT-OUT BACK DRESS
with seam allowance

~~SEAM ALLOWANCE~~

CUT-OUT EDGE BINDING
cut 1

Page 6C



Page 6D

