

SIZE TABLE
TIANA'S CLOSET SEWING PATTERNS

Size code	XS	X	S	M	L	XL	XXL	3XL	4XL	5XL
Bust	30	34	36	38	40	44	48	52	56	60
Waist	24	26	28	30	32	36	40	44	48	52
Hip	34	36	38	40	42	46	50	54	58	62

PRINTING INSTRUCTIONS

Tiana's Closet sewing patterns are made in standard PDF format, which means all files are saved in one file and can be shown or hidden. It is recommended to use Adobe Acrobat Reader (available on Mac, PC, and in the cloud) or Foxit Reader (free, works on Windows only) to avoid the file corrupting. In order to choose the correct size, go to the top left of your PDF viewer, click on all sizes except for the one you want to print, and then click on the size you want to print.

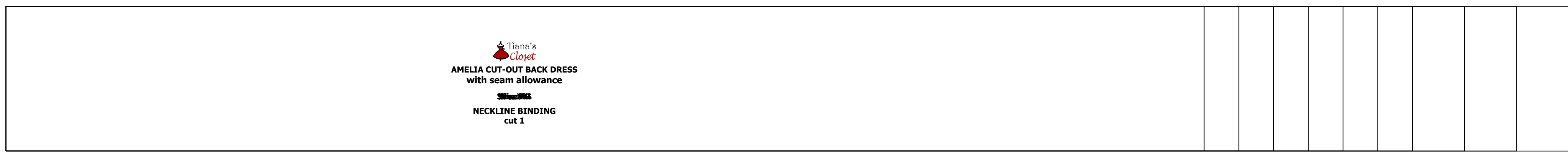
When printing the pattern, go to Print settings. In the top right corner, choose Custom range (100% for printing) or Actual Size to print. Make sure to select some components per page (not the line art) when you choose 100% scale, so you will only print the size you want. If you choose 100% scale, you will print the full size.

The pattern is 10 centimeters (3.94 inches) wide and 4 inches (10.16 cm) high.

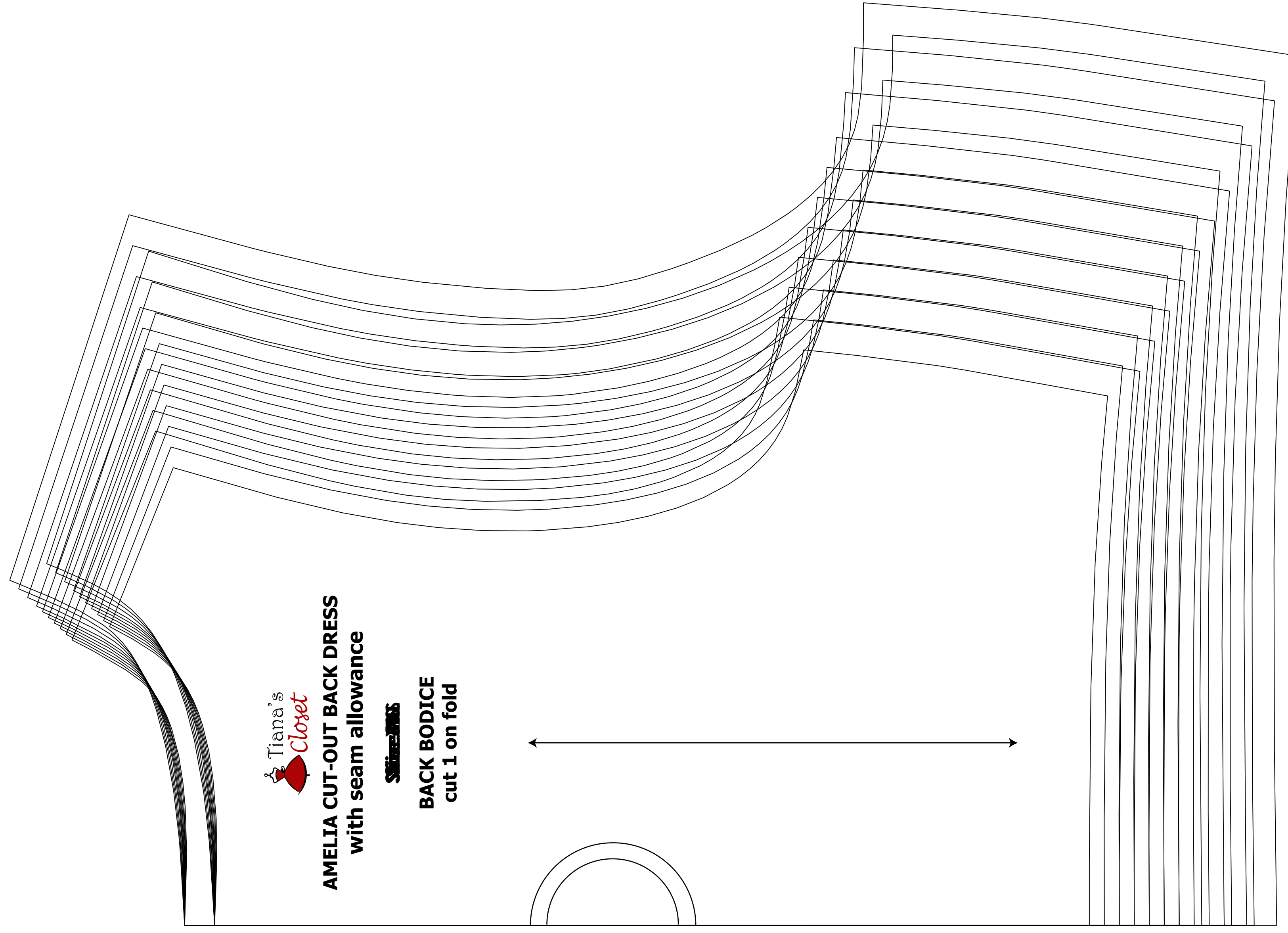
Always print the full page of the file and measure to avoid waste of paper.

After printing the pattern, cut the paper along the lines with sharp scissors and keep the pieces according to the quantity for example page 1A is topped by page 1B in row and page 1B topped by page 1A in column. Please see the page below to see how the pieces fit up.

You can find photo instruction for printing sewing patterns on Tiana's Closet website: <https://www.tianascloset.com/2020/08/01/how-to-print-sewing-patterns/>

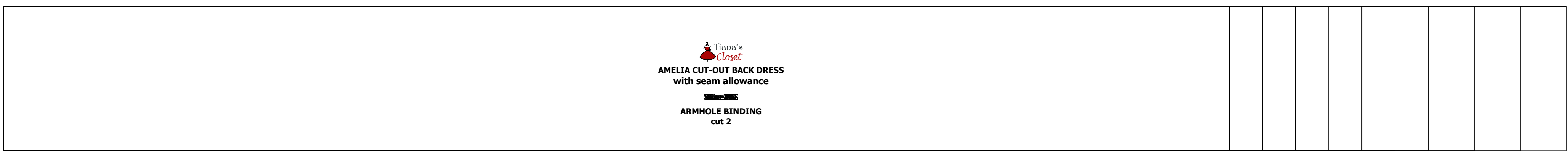


Tiana's Closet
AMELIA CUT-OUT BACK DRESS
with seam allowance
NECKLINE BINDING
cut 1

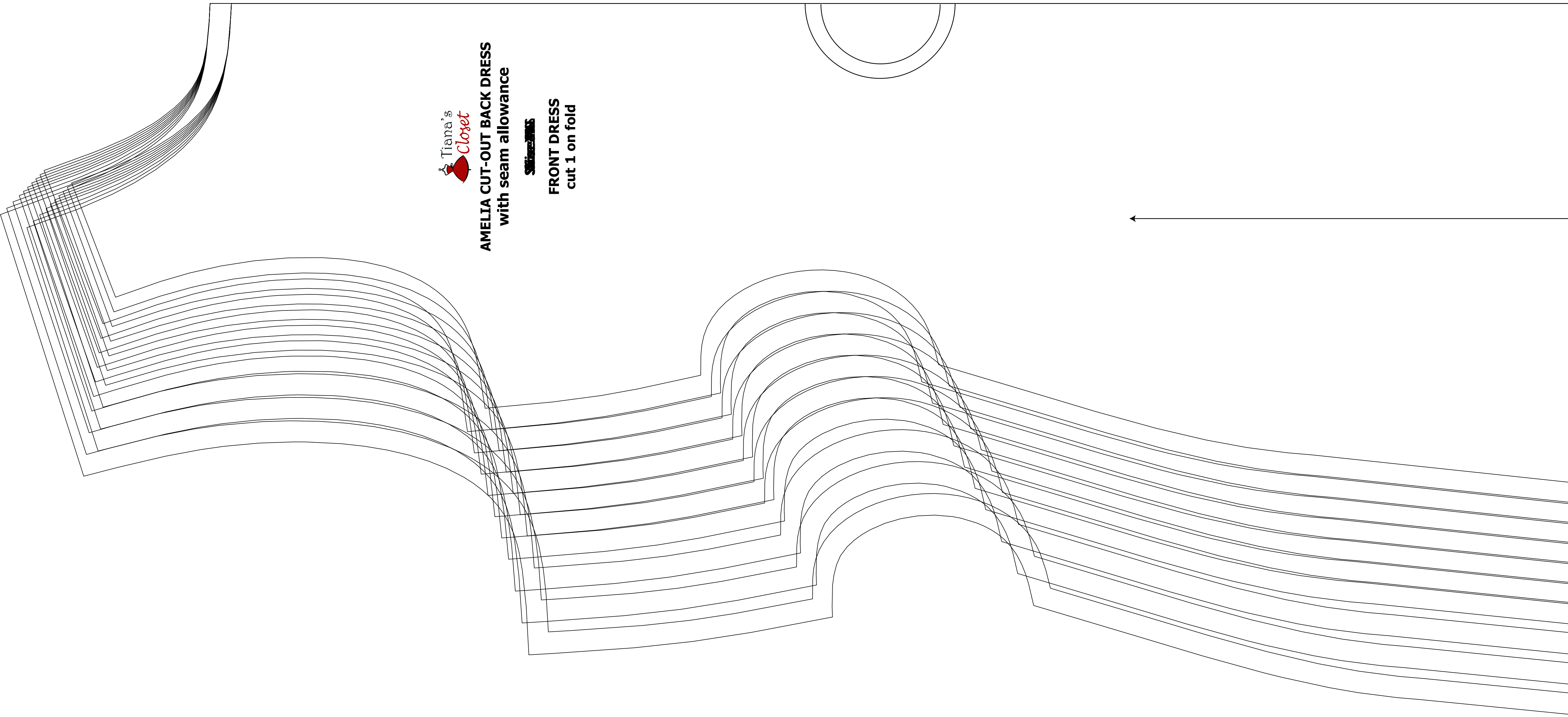


Tiana's Closet
AMELIA CUT-OUT BACK DRESS
with seam allowance
BACK BODICE
cut 1 on fold

Tiana's Closet
AMELIA CUT-OUT BACK DRESS
with seam allowance
BACK SKIRT
cut 1 on fold



Tiana's Closet
AMELIA CUT-OUT BACK DRESS
with seam allowance
ARMHOLE BINDING
cut 2



Tiana's Closet
AMELIA CUT-OUT BACK DRESS
with seam allowance
FRONT DRESS
cut 1 on fold

Tiana's Closet
AMELIA CUT-OUT BACK DRESS
with seam allowance
CUT-OUT EDGE BINDING
cut 1

