

SIZE TABLE

TIANA'S CLOSET SEWING PATTERNS

Size code	XS	S	M	L	XL	XXL	3XL	4XL	5XL
Bust	31.5	33	34.5	36	37.5	39	41	43.5	45
Waist	25.5	27	28.5	30	31.5	33	34.5	36	37.5
Hip	34.5	36	37.5	39	40.5	42	43.5	45	46.5

PRINTING INSTRUCTIONS

Tiana's Closet sewing patterns are made in standard PDF format, which means all files are saved in one file and can be printed on paper. It is recommended to use Adobe Acrobat Reader (open version on Mac, or free on Windows) or PDFelement. Please, do not use other tools to edit the patterns, in order to ensure the correct sizes, go to paper tab of your PDF reader, under the size of paper you are using, select the correct size for the paper you are using.

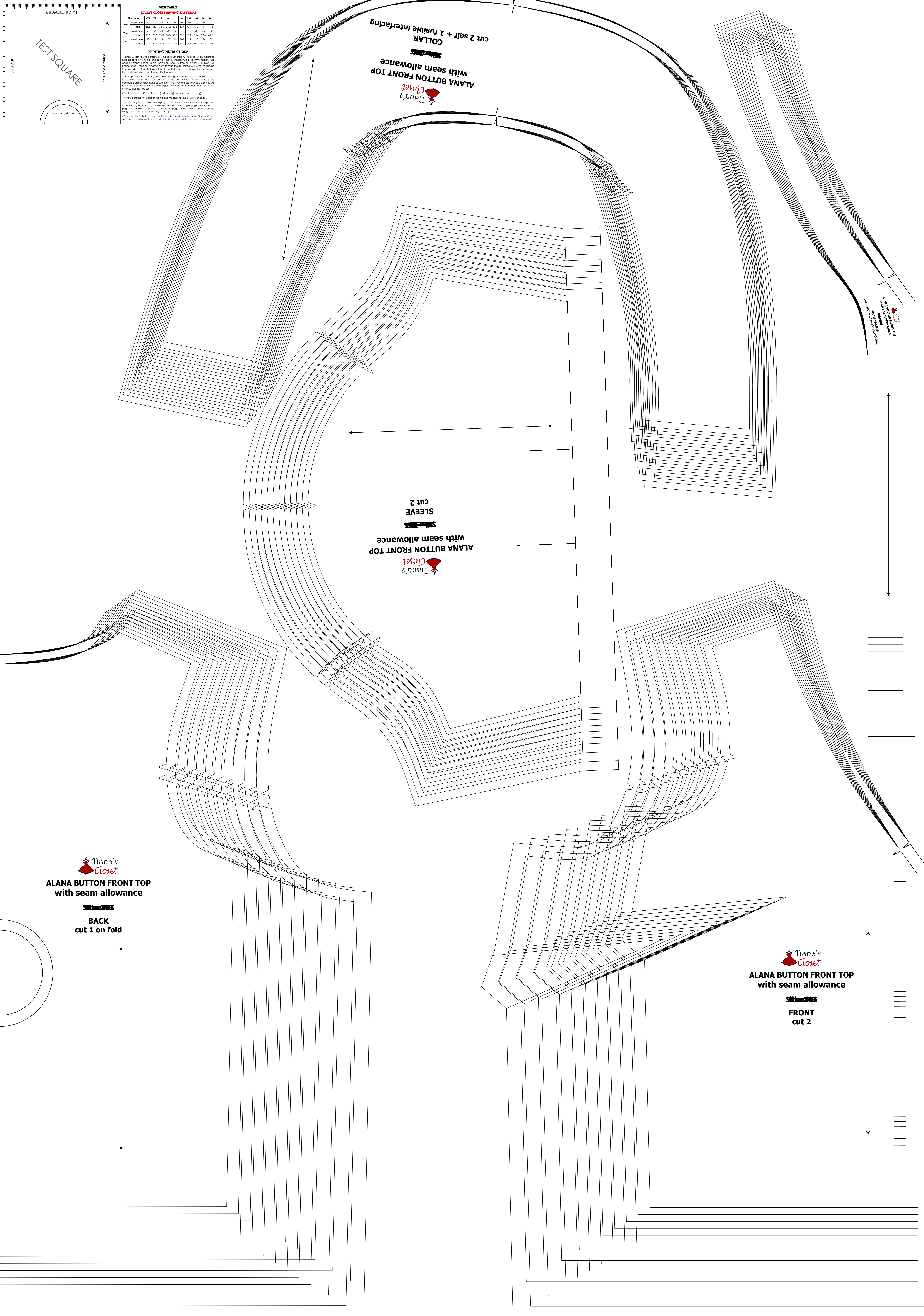
When printing the patterns, go to their settings, in the top right corner, choose Custom Scale: 100% (or Double, Triple or Actual Size) to print from 100%. Make sure you print the patterns from the side even when you choose 100% scale, so you will have to adjust the scale to 100% (right from 100%) and measure the test square until you get the true size.

The test square is 10 centimeters (3.937 inches) wide and 4 inches (10.16 cm) high.

Always print the first page of the file and measure to avoid scale of paper.

After printing the pattern, cut the paper along the length of the lines, edge and top of the pattern according to their instructions. For example, page 1 is a top to edge, 2 is a top to edge, 3 is a top to edge, 4 is a top to edge. Please see the image below to see how to print the file.

You can find more information on getting sewing patterns on Tiana's Closet website: <https://tianas-closet.com/faq>



Tiana's Closet
ALANA BUTTON FRONT TOP
 with seam allowance
 Size: XS
BACK
 cut 1 on fold

Tiana's Closet
ALANA BUTTON FRONT TOP
 with seam allowance
 Size: XS
FRONT
 cut 2

Tiana's Closet
ALANA BUTTON FRONT TOP
 with seam allowance
SLEEVE
 cut 2

Tiana's Closet
ALANA BUTTON FRONT TOP
 with seam allowance
 cut 2 self + 1 fusible interfacing