

**SIZE TABLE**

**TIANA'S CLOSET SEWING PATTERNS**

Size	XS	S	M	L	XL	2XL	3XL	4XL	5XL
Bust (centimeter)	80	84	88	92	96	100	104	110	116
Bust (inch)	31.5	33	34.5	36	37.5	39	41	43.3	45.7
Waist (centimeter)	62	66	70	74	78	82	86	90	94
Waist (inch)	24.4	26	27.6	29.1	30.7	32.3	33.9	35.4	37
Hip (centimeter)	88	92	96	100	104	108	112	116	120
Hip (inch)	34.6	36.2	37.8	39.4	41	42.5	44.1	45.7	47.3

**PRINTING INSTRUCTIONS**

1. Tiana's Closet sewing patterns are made in Unisex PDF format, which means all sizes are listed in one file and you can choose the pattern. It is recommended to use Adobe Acrobat Reader (latest version on Mac OS, free on Windows) or Free PDF Reader (free, with an in-app purchase) to view the patterns, in order to discover the details (like go to custom size or full PDF version, untrack of files except for the desired size) and the box that fit all sizes.

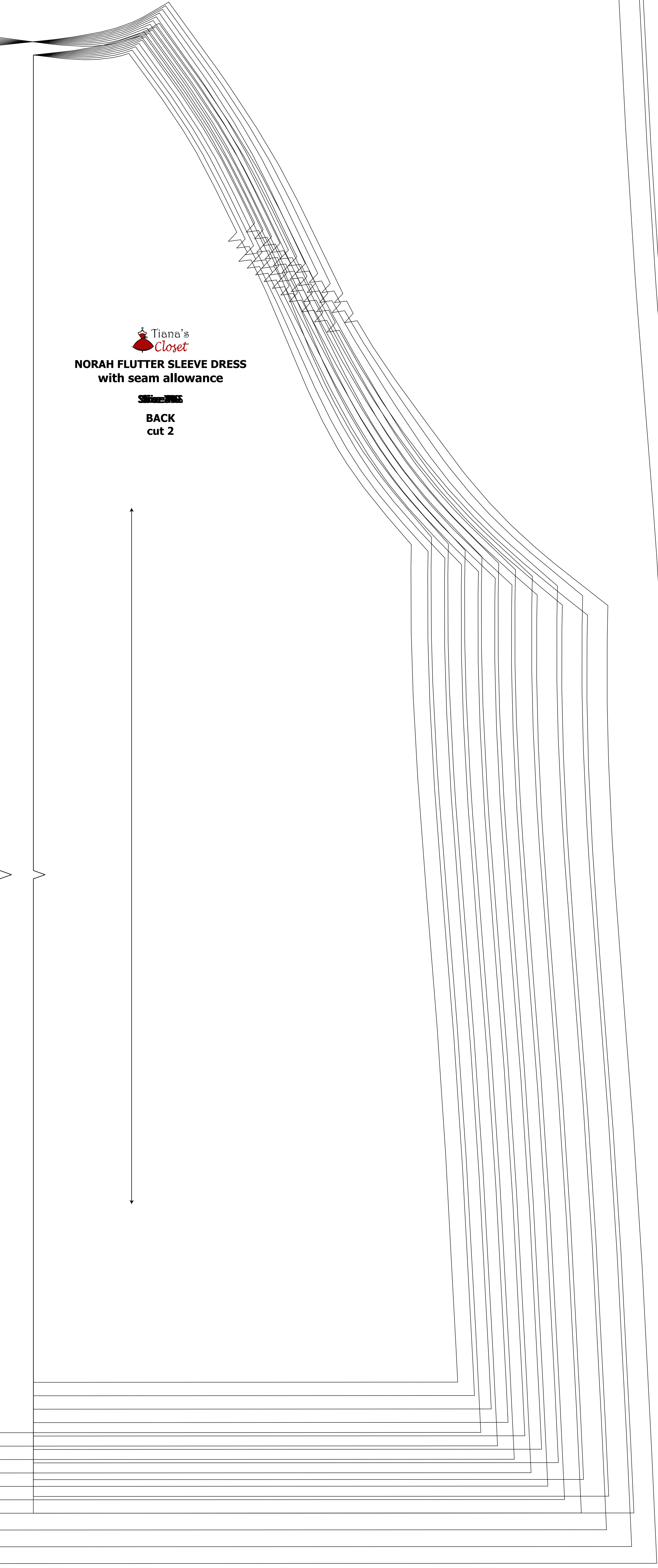
2. When printing the patterns, go to the settings in the top right corner. Custom sizes: 100% of Scaling (size of Actual Size) to print true to size. Make some comparison on people that has different sizes you choose 100% size, so you will know to adjust the size to a little larger than 100% and measure the test square with you get the size.

3. The test square is 10 centimeters (horizontal) and 4 inches (vertical).

4. Adjust your test square to the size and measure to double width of chest.

5. After printing the patterns, cut the pages along the lines with scissors (don't align and then the pages according to the instructions, the example page is a guide to page 8 in the print page. It is a paper to page 3 in 4 column. Please see the page below to see the page layout).

6. You can see photo instruction for printing sewing patterns on Tiana's Closet website: <https://www.tianascloset.com/2018/05/10/how-to-print-sewing-patterns/>



Tiana's Closet  
**NORAH FLUTTER SLEEVE DRESS with seam allowance**  
 BACK cut 2



Tiana's Closet  
**NORAH FLUTTER SLEEVE DRESS with seam allowance**  
 FRONT cut 1 on fold



