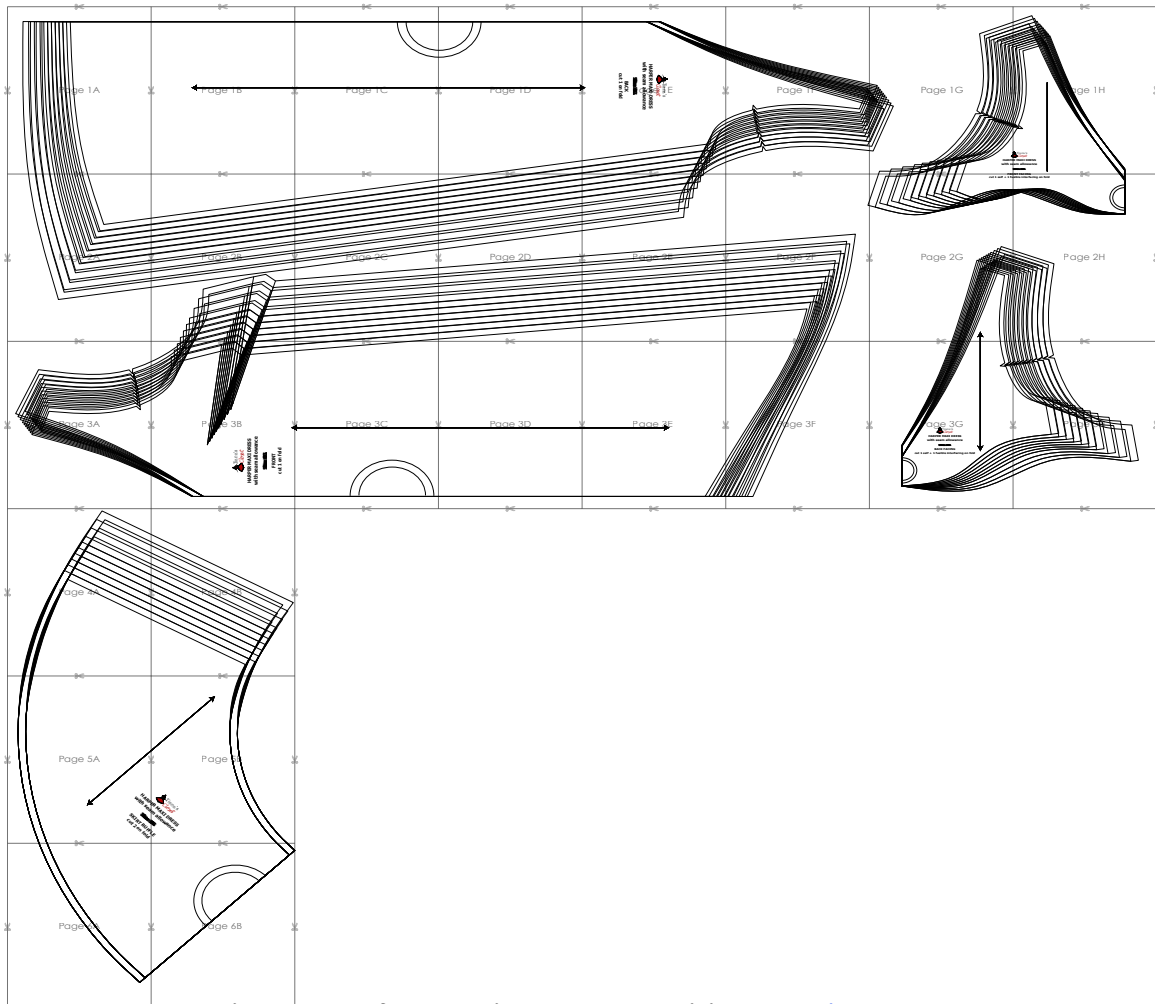


SIZE TABLE
TIANA'S CLOSET SEWING PATTERNS

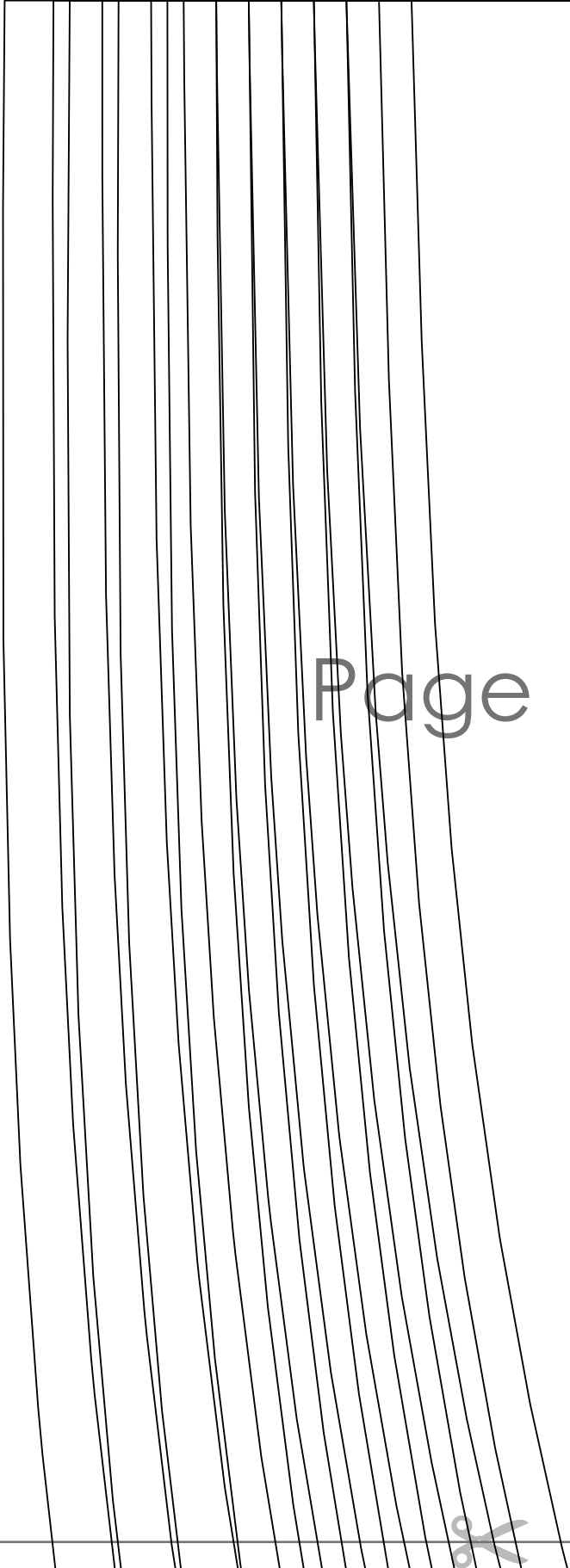
Size code	XXS	XS	S	M	L	XL	XXL	3XL	4XL	5XL
Bust	centimeter	80	84	88	92	96	100	104	110	122
	inch	31.5	33.1	34.6	36.2	37.8	39.4	40.9	43.3	47.2
Waist	centimeter	60	64	68	72	76	80	84	90	102
	inch	23.6	25.2	26.8	28.3	29.9	31.5	33.1	35.4	40.2
Hip	centimeter	88	92	96	100	104	108	112	118	130
	inch	34.6	36.2	37.8	39.4	40.9	42.5	44.1	46.5	52.0

PRINTING INSTRUCTIONS

- Tiana's Closet sewing patterns are made in Layered PDF format, which means all sizes are saved in one file and can be shown or hidden. It is recommended to use Adobe Acrobat Reader (paid version on Mac OS, free on Windows) or Foxit PDF Reader (free, works on Windows only) to read the file correctly. In order to choose the desired size(s), go to Layers tab of your PDF reader, uncheck all boxes except for the desired size(s) and the box Print for all sizes.
- When printing the pattern, go to Print settings, in the tab Scale choose Custom scale: 100% (or Scaling: None or Actual Size) to print true to size. Note: some computers print smaller than true size even when you choose 100% scale, so you will have to adjust the scale to a little larger than 100% and measure the test square until you get the true size.
- The test square is 10 centimeters (horizontally) and 4 inches (vertically).
- Always print the first page of the file and measure to avoid waste of paper.
- After printing the pattern, cut the pages along the lines with scissors icon, align and tape the pages according to their sequences. For example, page 1A is taped to page 1B in a row, and page 1A is taped to page 2A in a column. Please see the image below to see how the pages line up.
- You can find photo instruction for printing sewing patterns on Tiana's Closet website: <https://tianas-closet.com/index.php/how-to-print-tianas-closet-patterns/>



For more ideas and free sewing patterns, visit <http://tianas-closet.com>



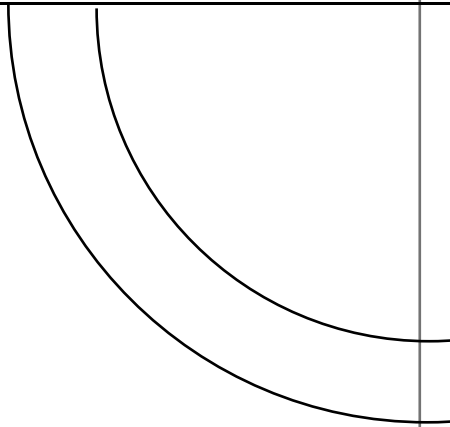
Page 1A





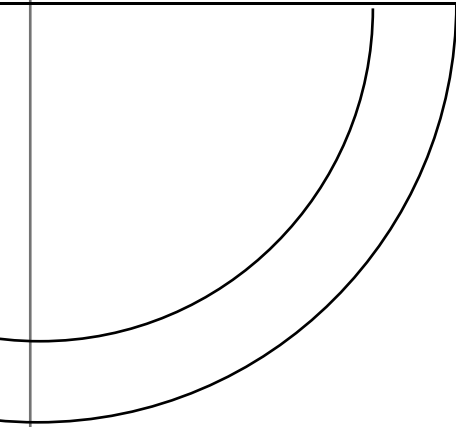
← Page 1B



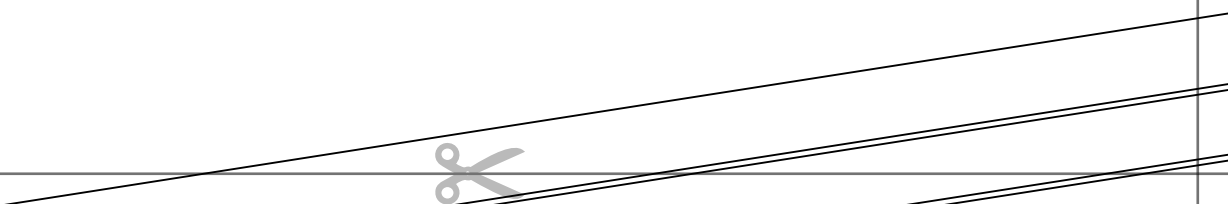


Page 1C





Page 1D





Tianna's

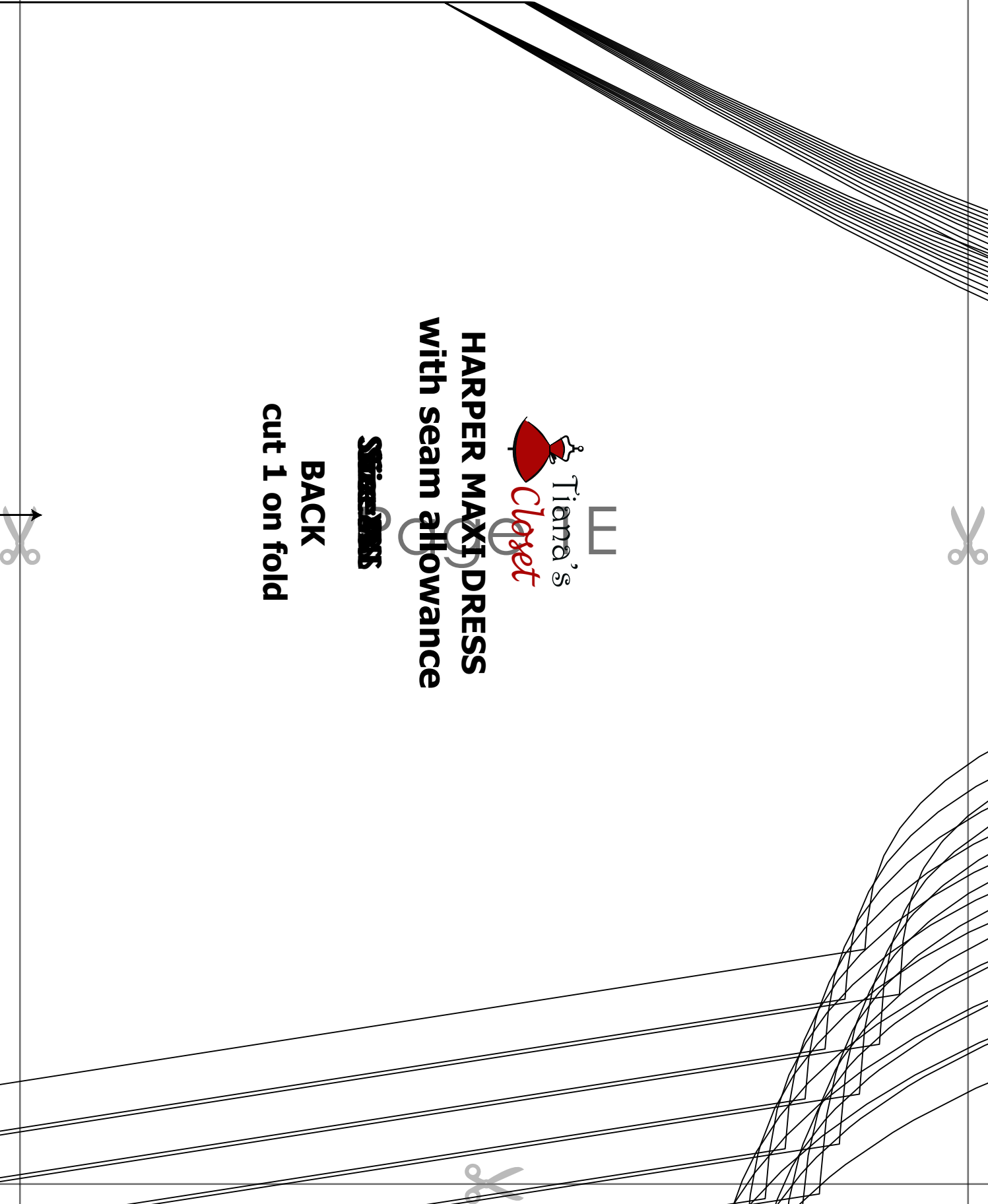
Closet

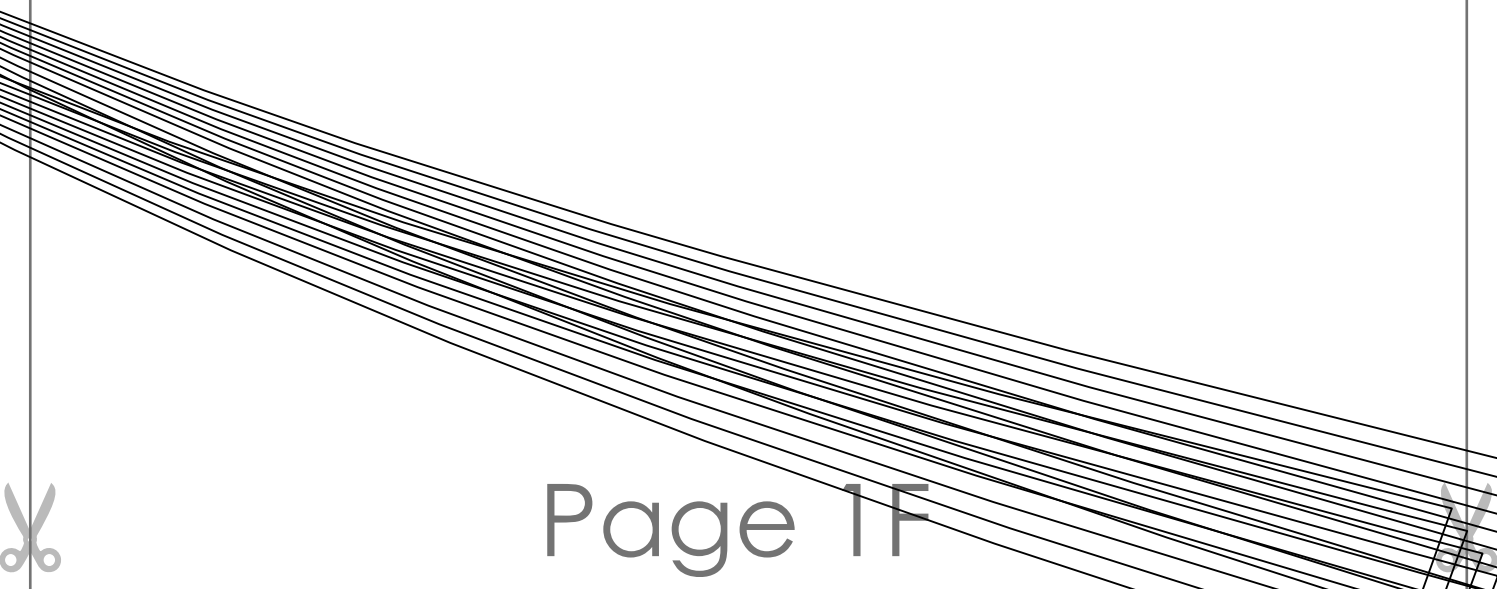
HARPER MAXI DRESS
with seam allowance

SEAMS

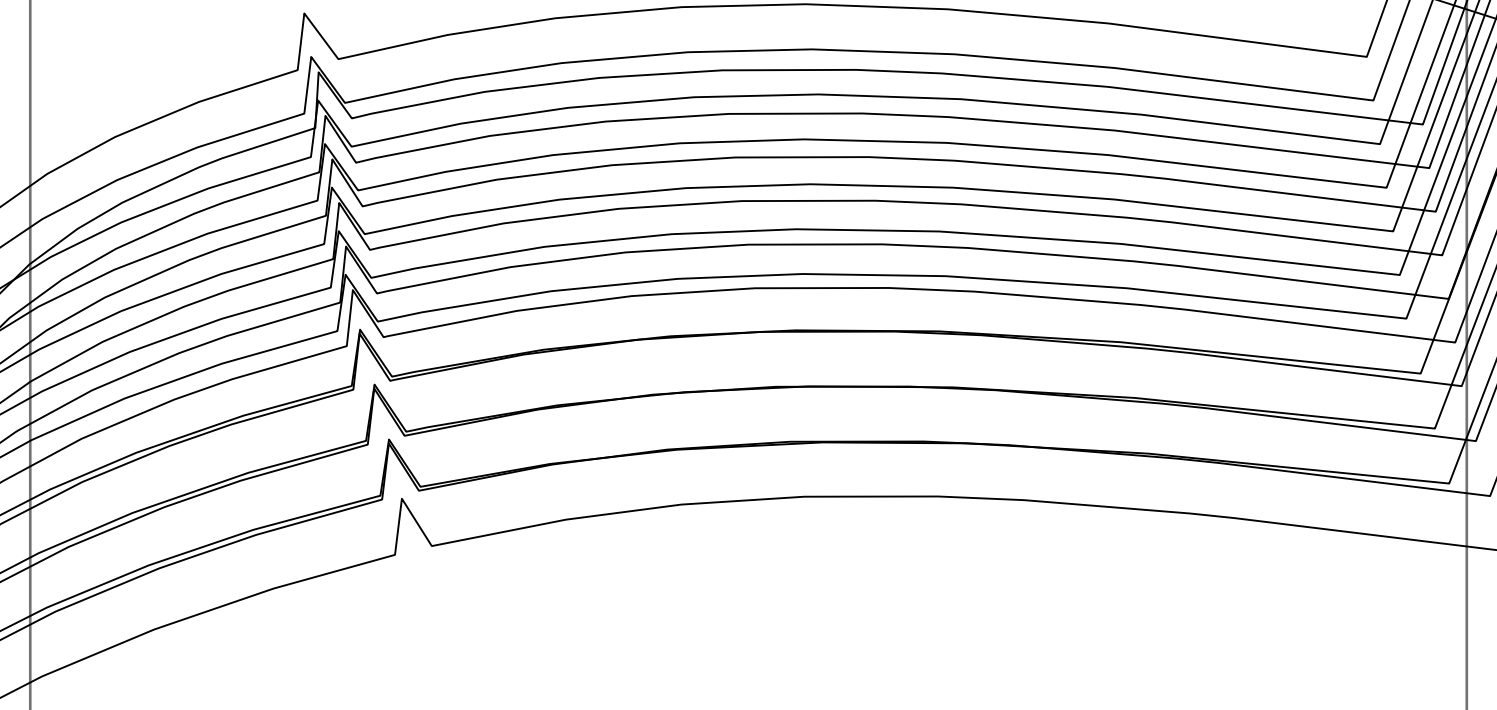
BACK

cut 1 on fold



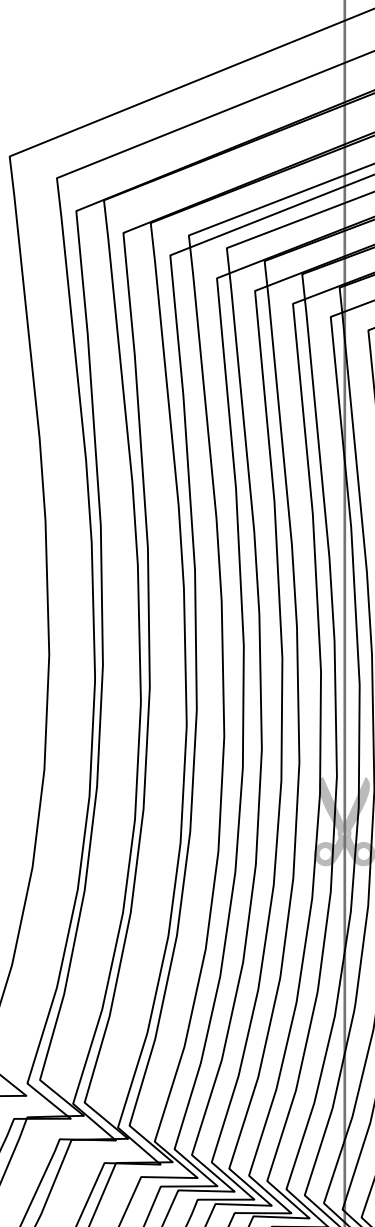
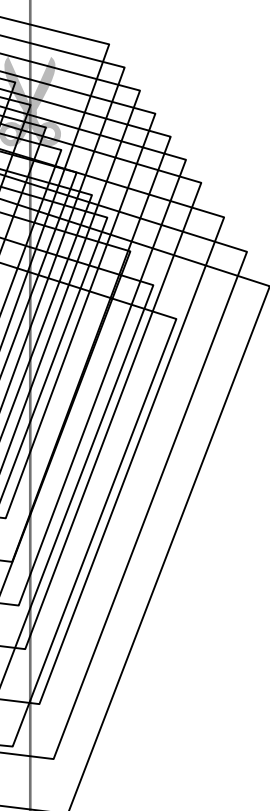


Page 1F





Page 1G



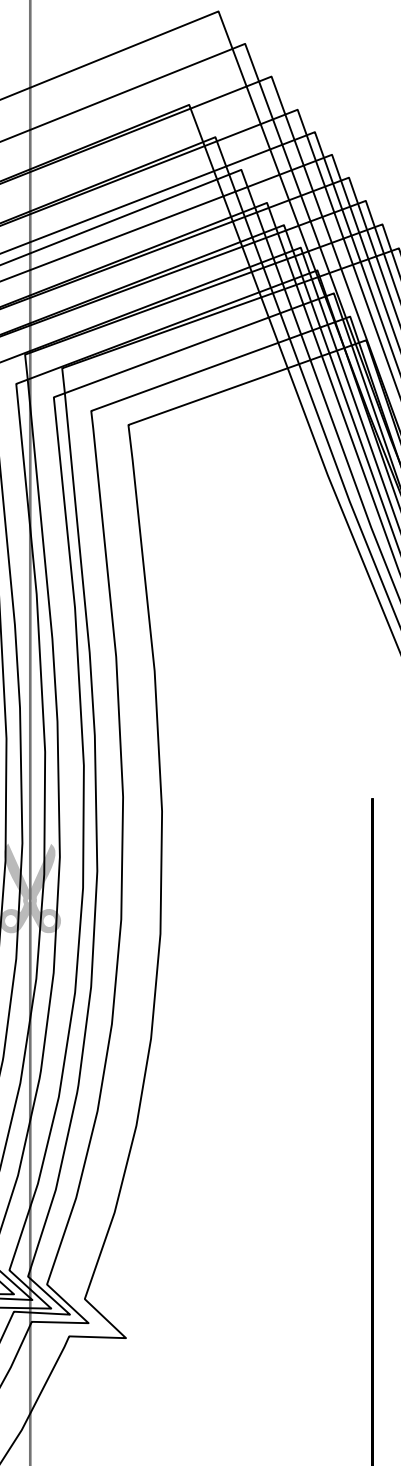
HARPER
with sea



FRON

cut 1 self + 1 fr





Page 1H

 Tiana's
Closet
PER MAXI DRESS
seam allowance

Size: MS

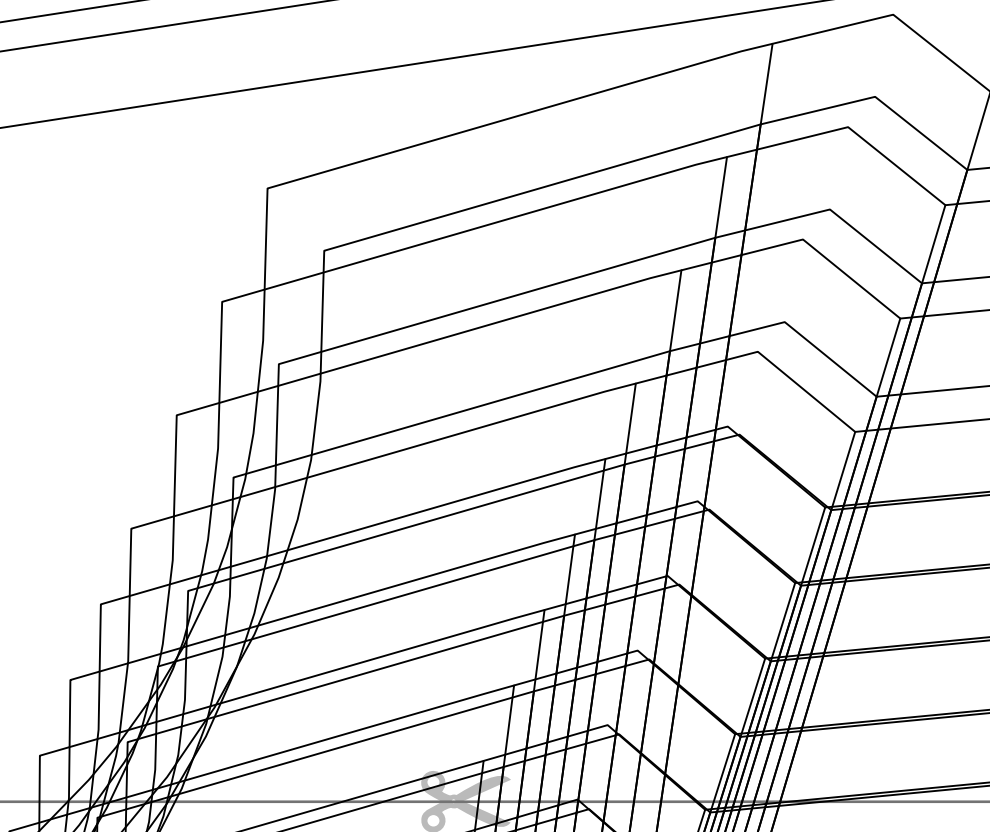
FRONT FACING
fusible interfacing on fold

Page 2A





Page 2B





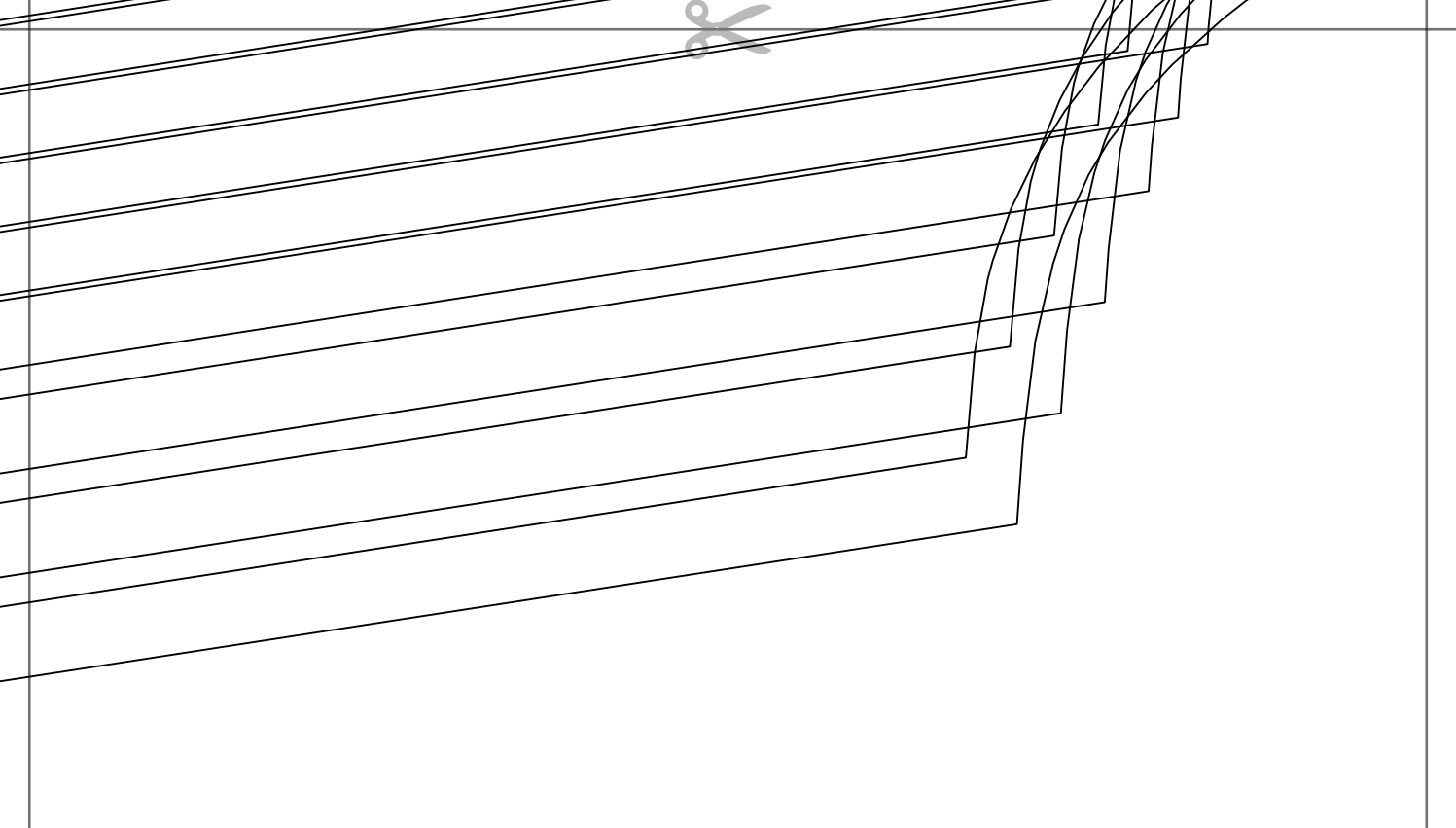
Page 2C





Page 2D





Page 2E



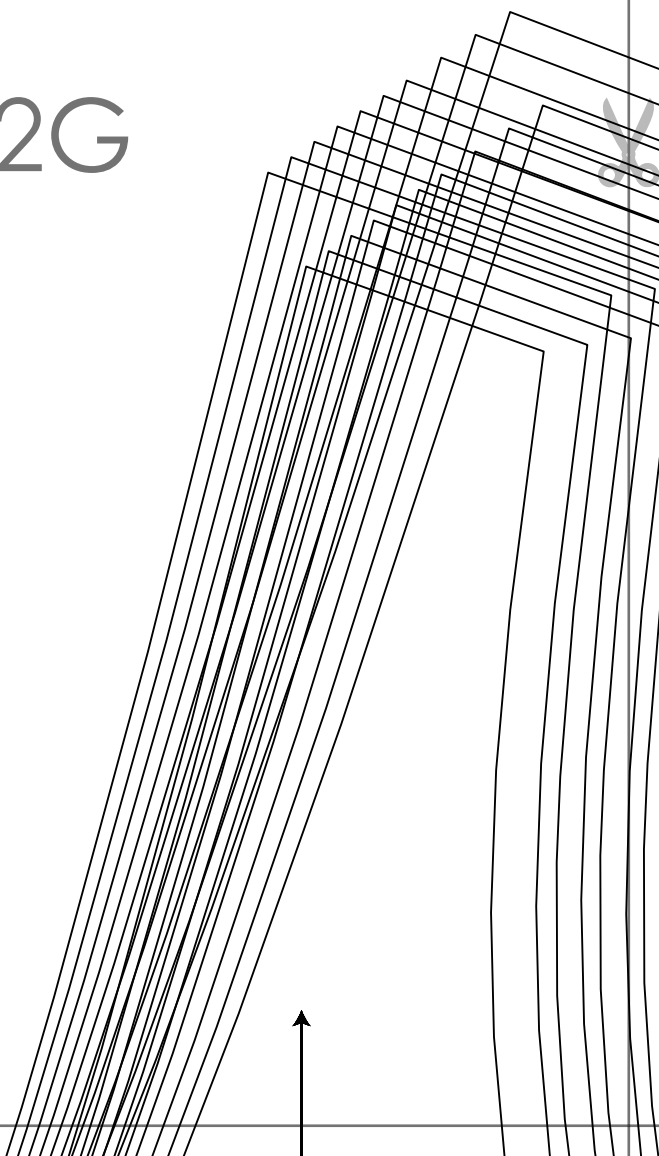
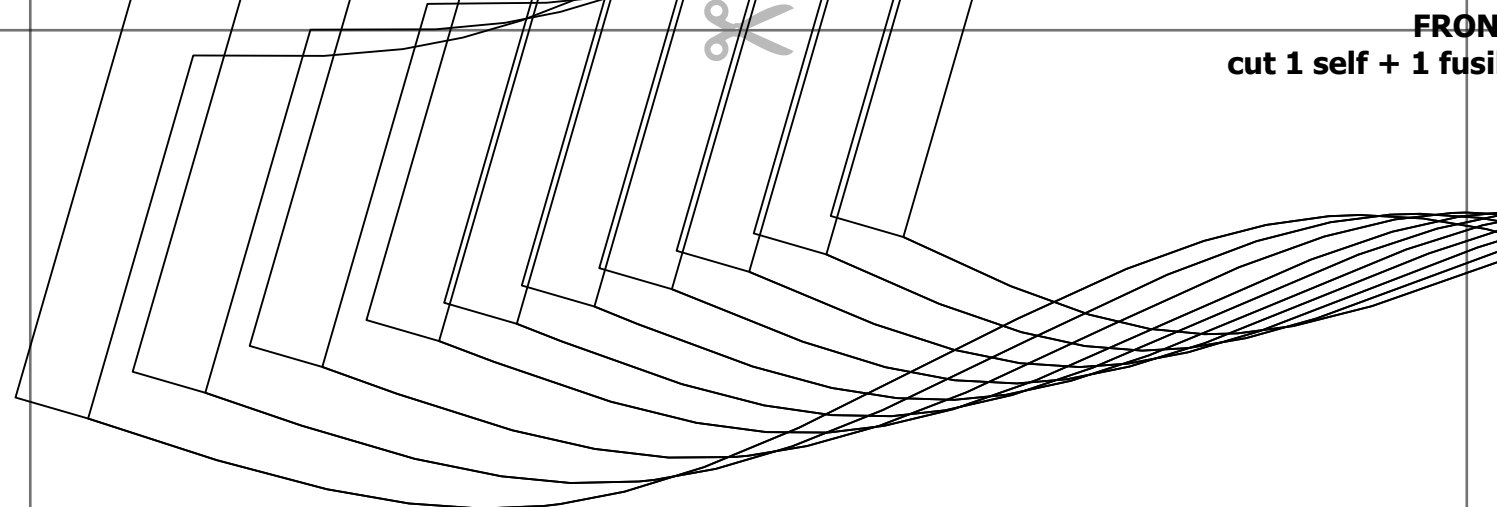


Page 2F

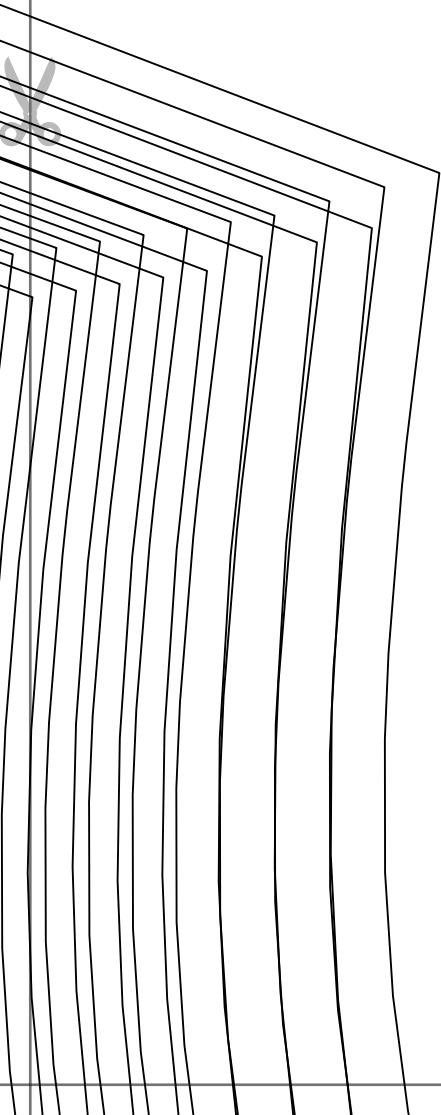
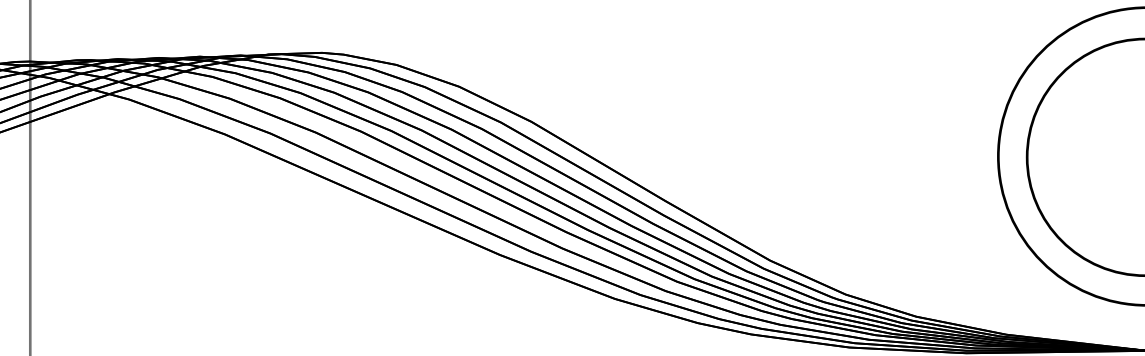


FRON
cut 1 self + 1 fusi

Page 2G

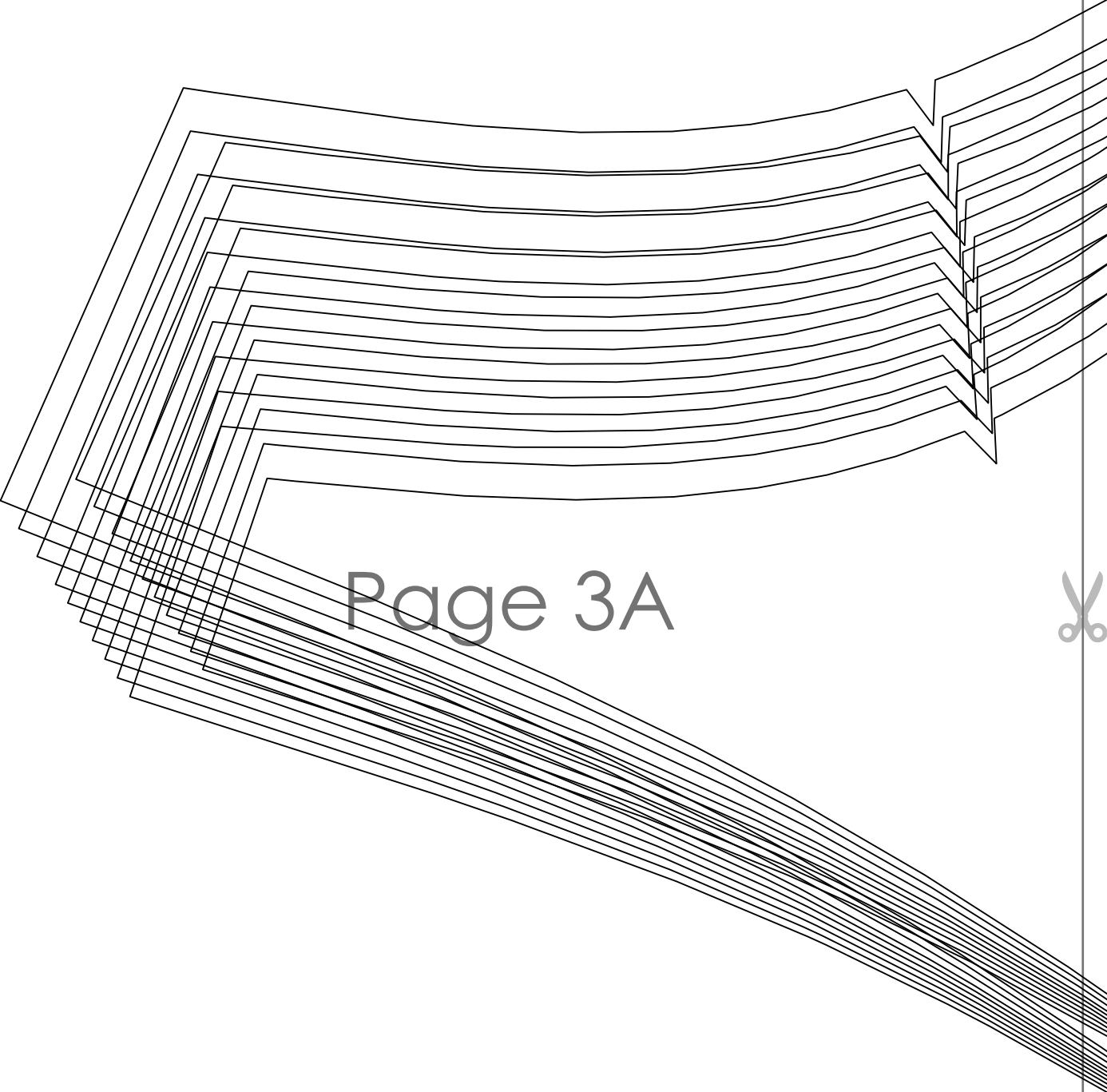


FRONT FACING
fusible interfacing on fold



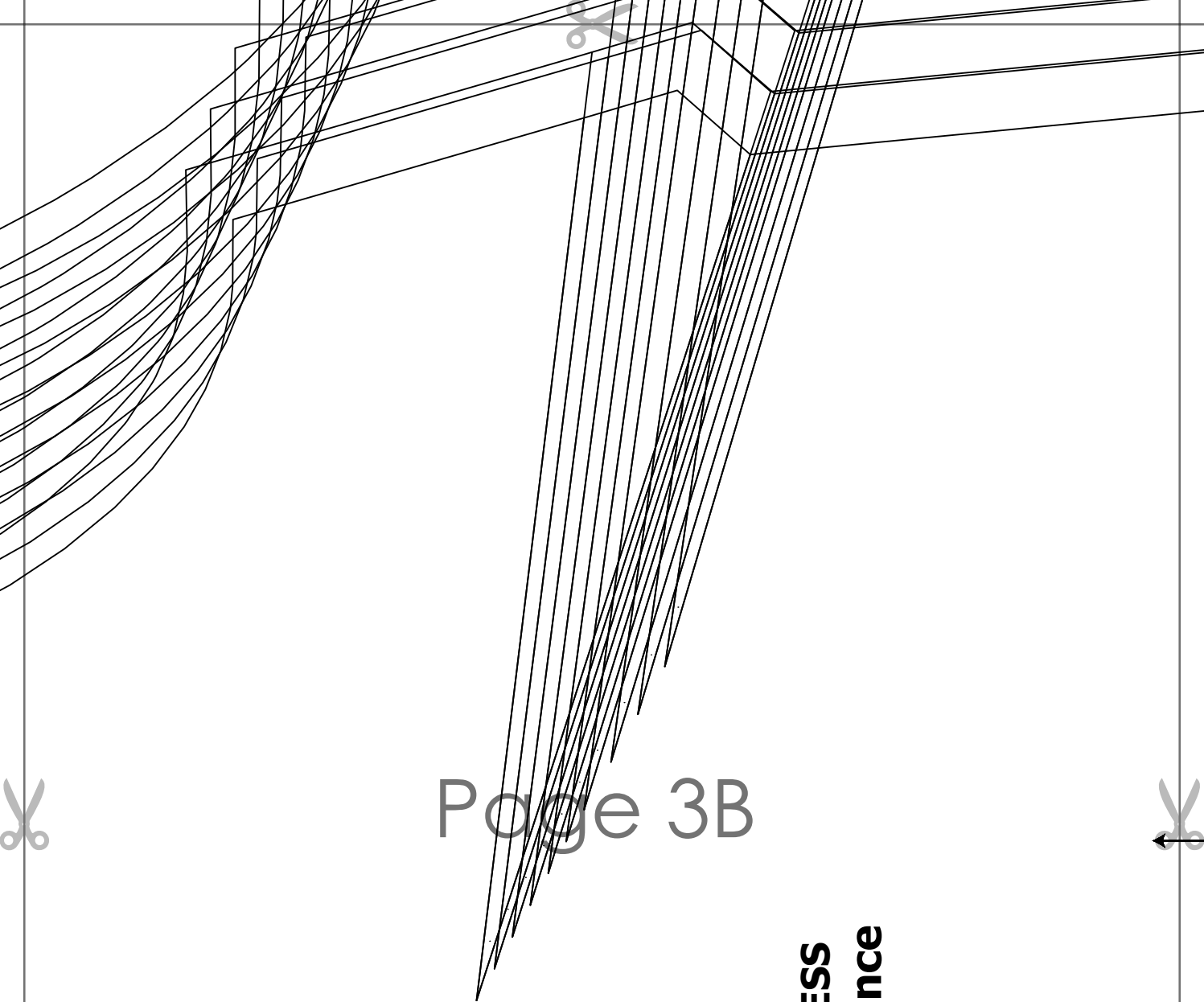
Page 2H





Page 3A





Page 3B



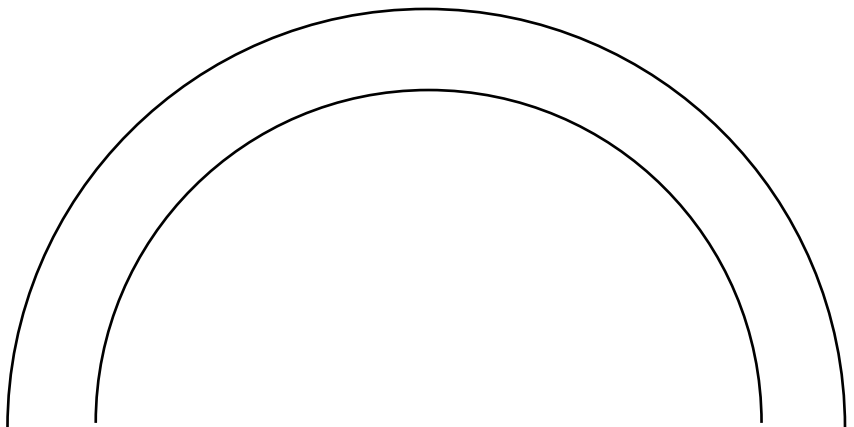
HARPER MAXI DRESS
with seam allowance

SWEEPERS

FRONT
cut 1 on fold



Page 3C



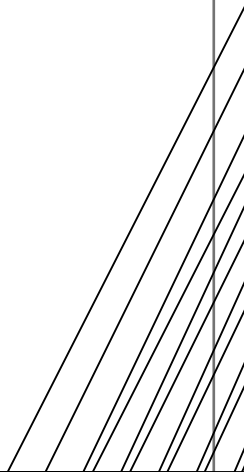


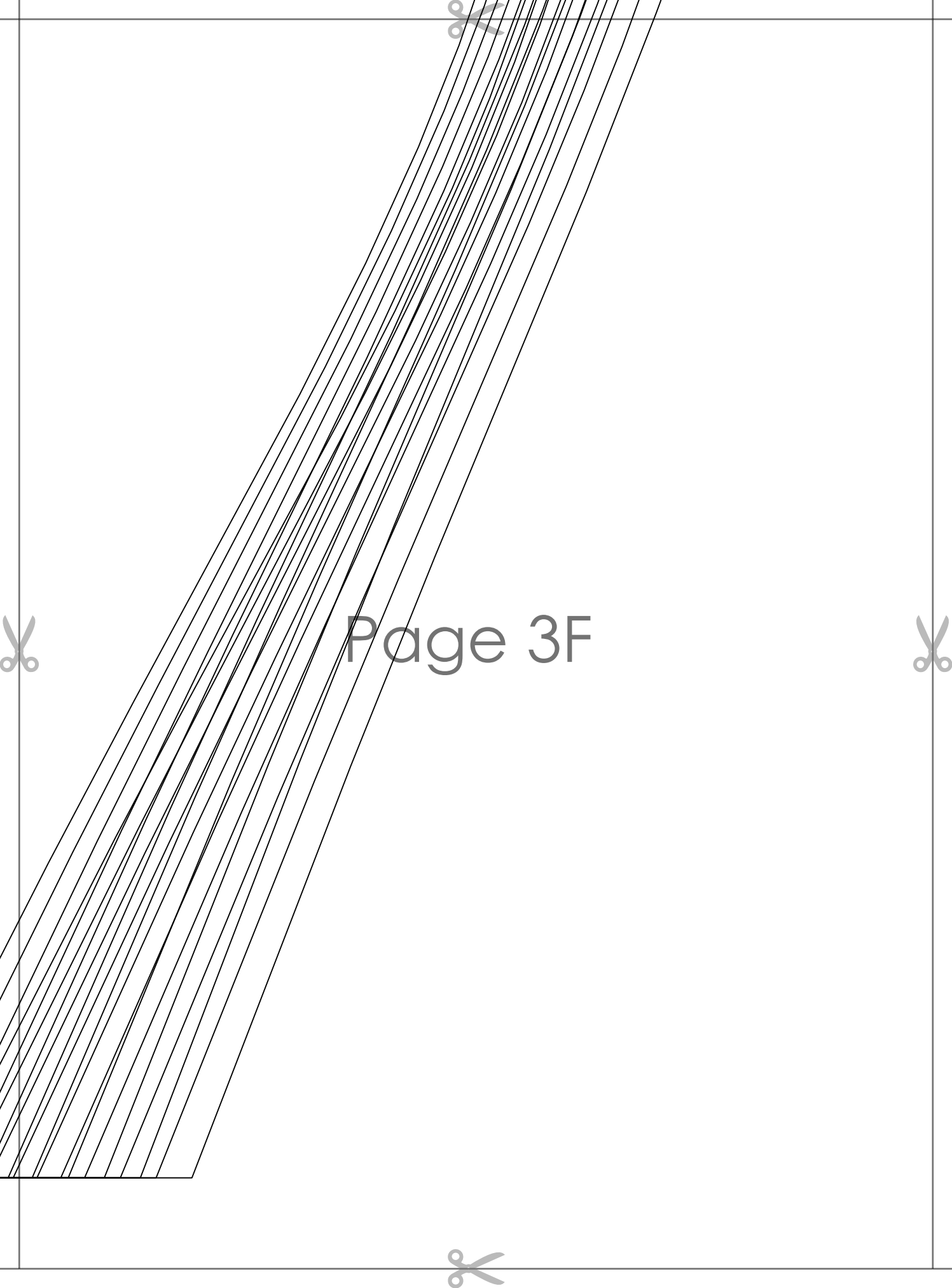
Page 3D





Page 3E





Page 3F





Page 3G

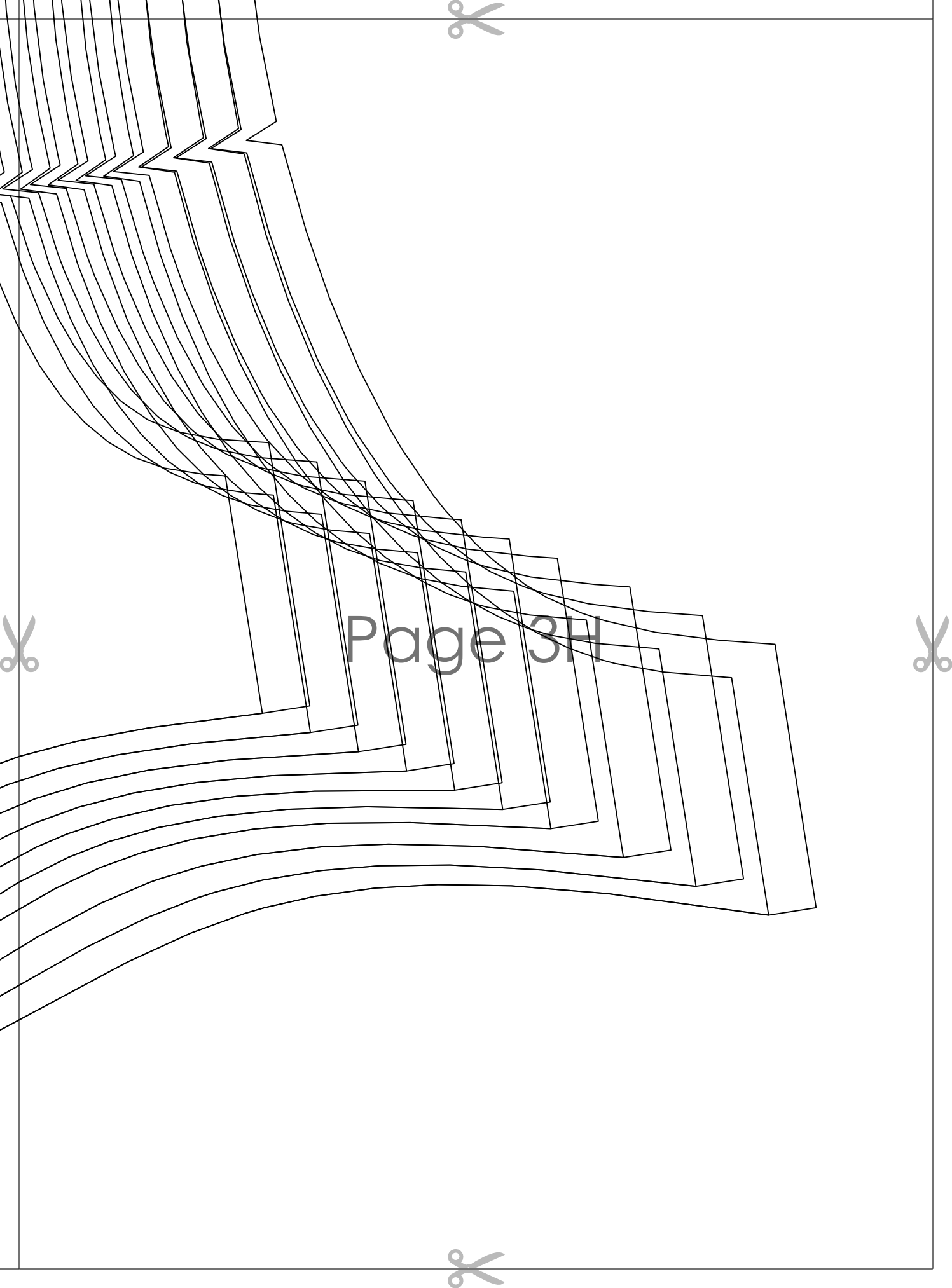


**HARPER MAXI DRESS
with seam allowance**

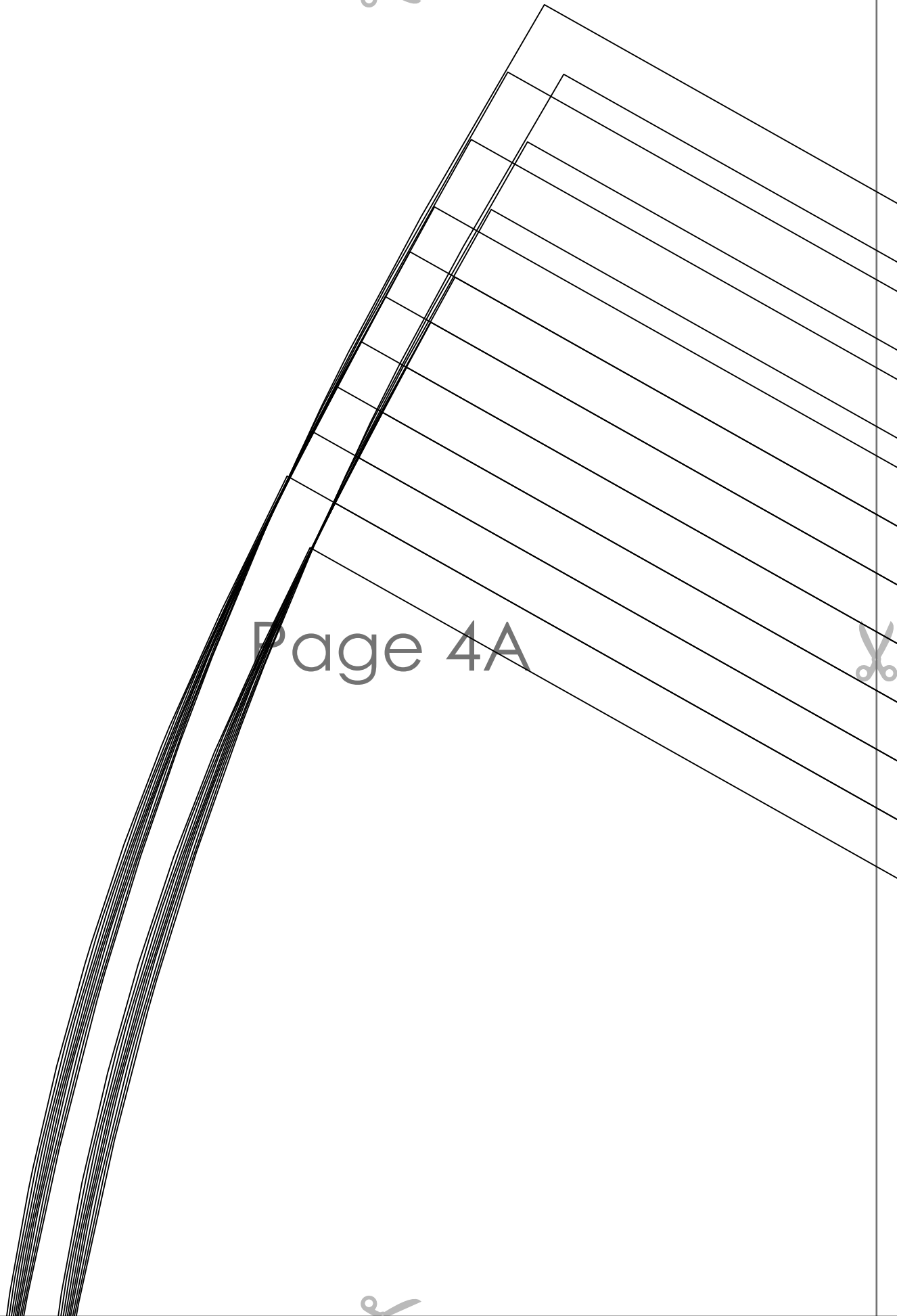
~~Size 20~~

BACK FACING
cut 1 self + 1 fusible interfacing on fold

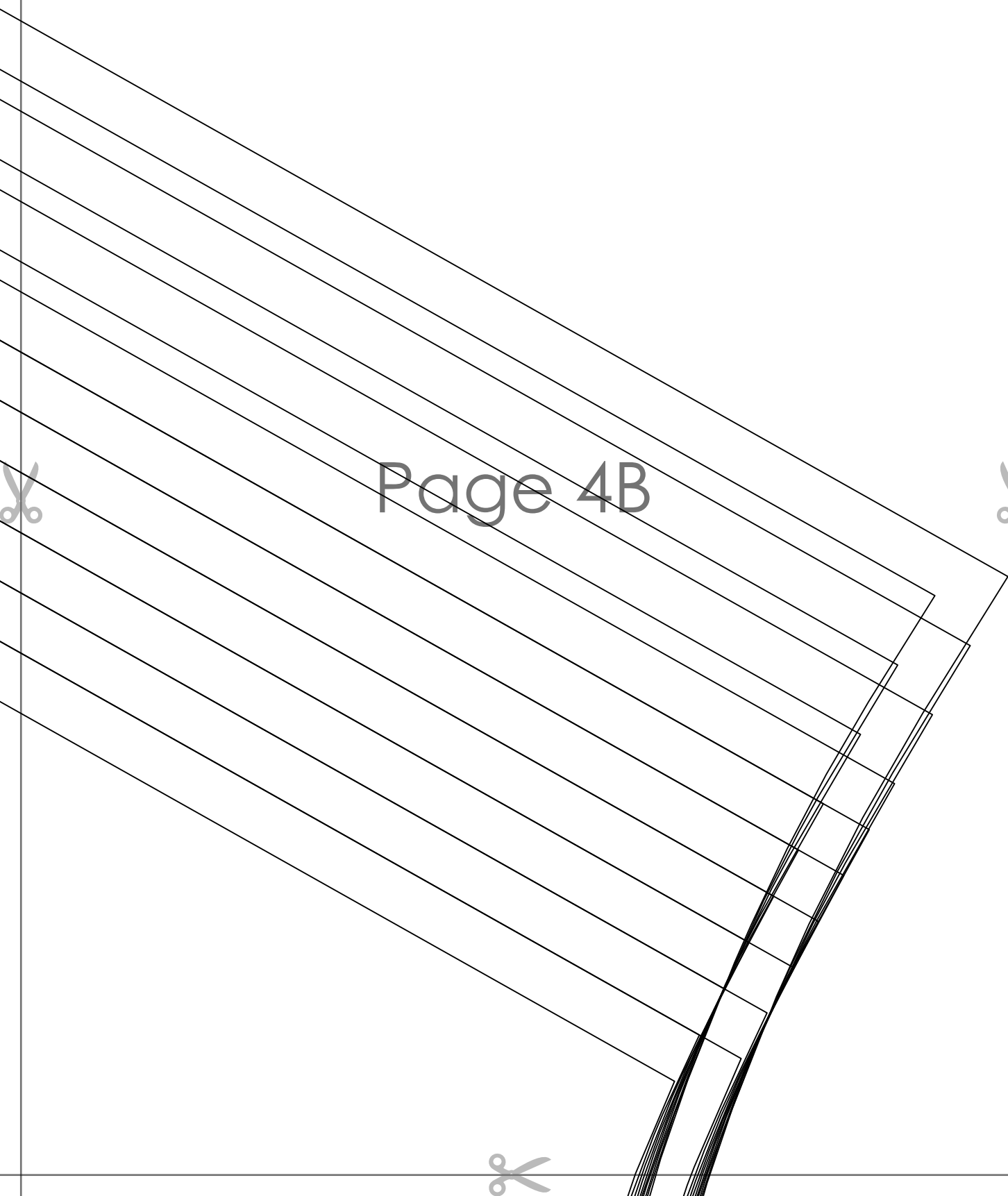




Page 3H



Page 4A

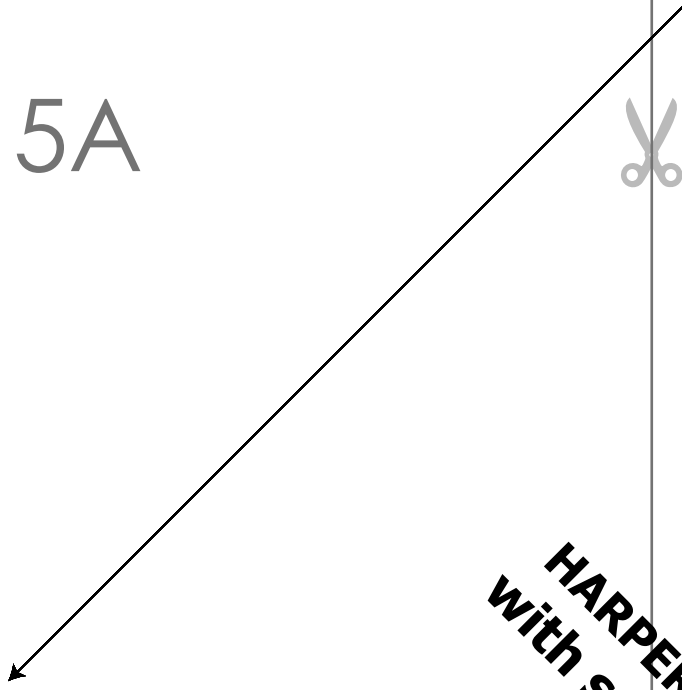


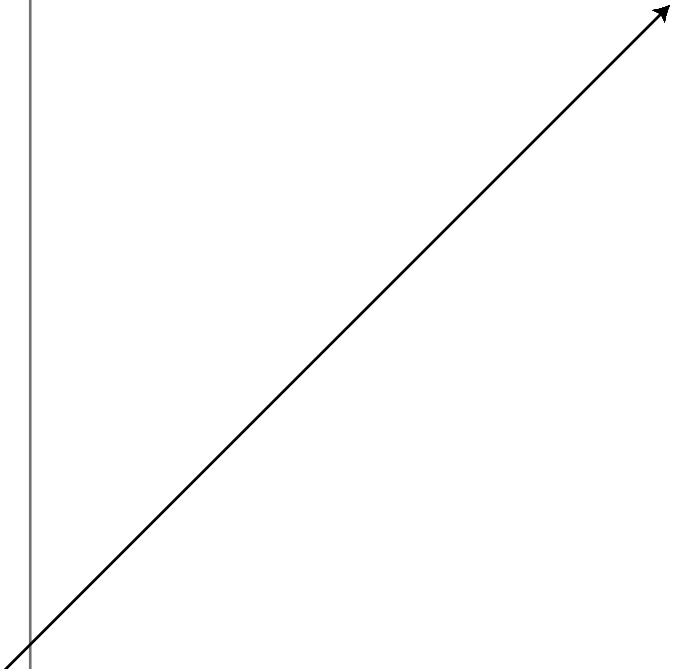
Page 4B



Page 5A

HARPER
with seam
~~Size 12~~
SKIRT RUFFLE
cut 2 on fold





Page 5B

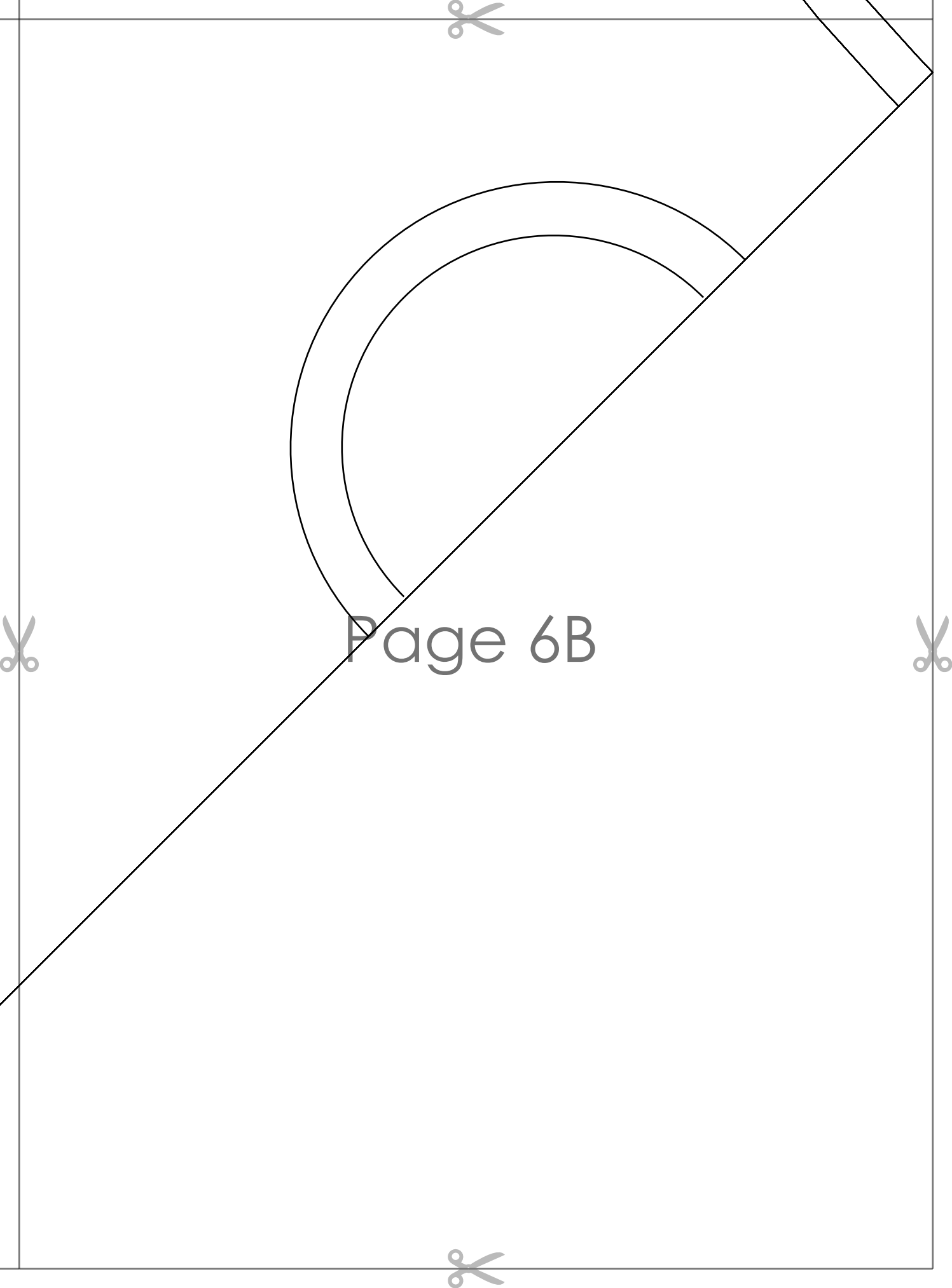



 Tiana's
Closet
 UPPER MAXI DRESS
 Seam allowance

PAPER
 FILE
 H

Page 6A





Page 6B