

**SIZE TABLE**

**TIANA'S CLOSET SEWING PATTERNS**

Size Code	XXS	Xs	S	M	L	XL	2XL	3XL	4XL	5XL
Bust	30	31	32	33	34	35	36	37	38	39
Waist	24	25	26	27	28	29	30	31	32	33
Hip	34	35	36	37	38	39	40	41	42	43

**PRINTING INSTRUCTIONS**

These patterns are made in Adobe PDF format, which means all lines are solid in color and can be drawn or copied. It is recommended to use Adobe Acrobat Reader (not a viewer) on Mac, OS, Free or Windows or Real PDF Reader. These work on Windows only to access the content in order to change the desired sizes up to seven full sizes (7" taller, unless all sizes except for the desired sizes) and the top part for all sizes.

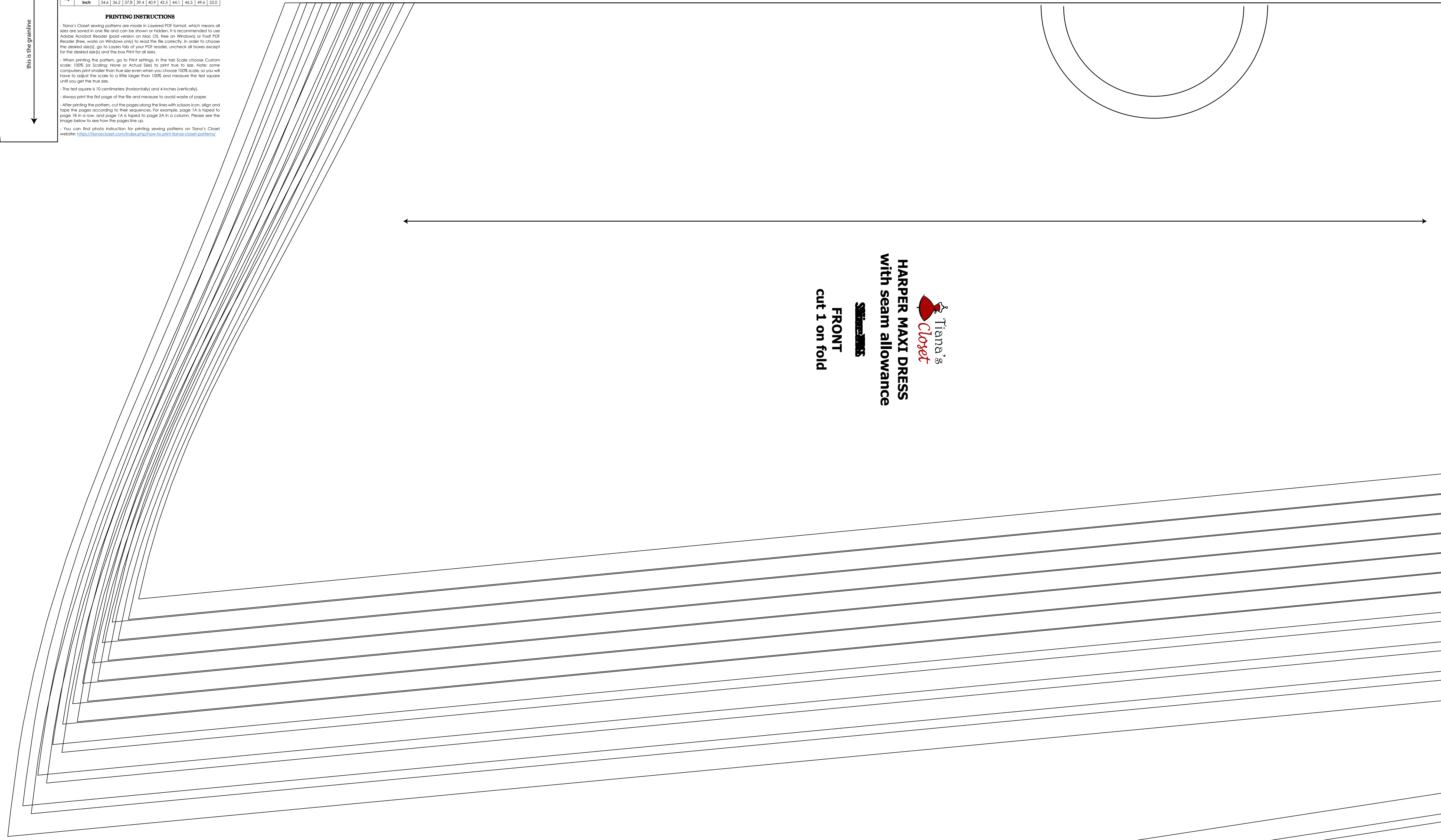
When printing the pattern, go to the settings for the file size. Choose Custom color 100% for scaling. Print or Actual Size to print true to size. Note: some computers print smaller than the actual size. To check the scale, print the test square to adjust the size to be larger than 100% and measure the test square with your ruler.

The test square is 10 centimeters (3.937 inches) and 4 inches (10.16 cm).

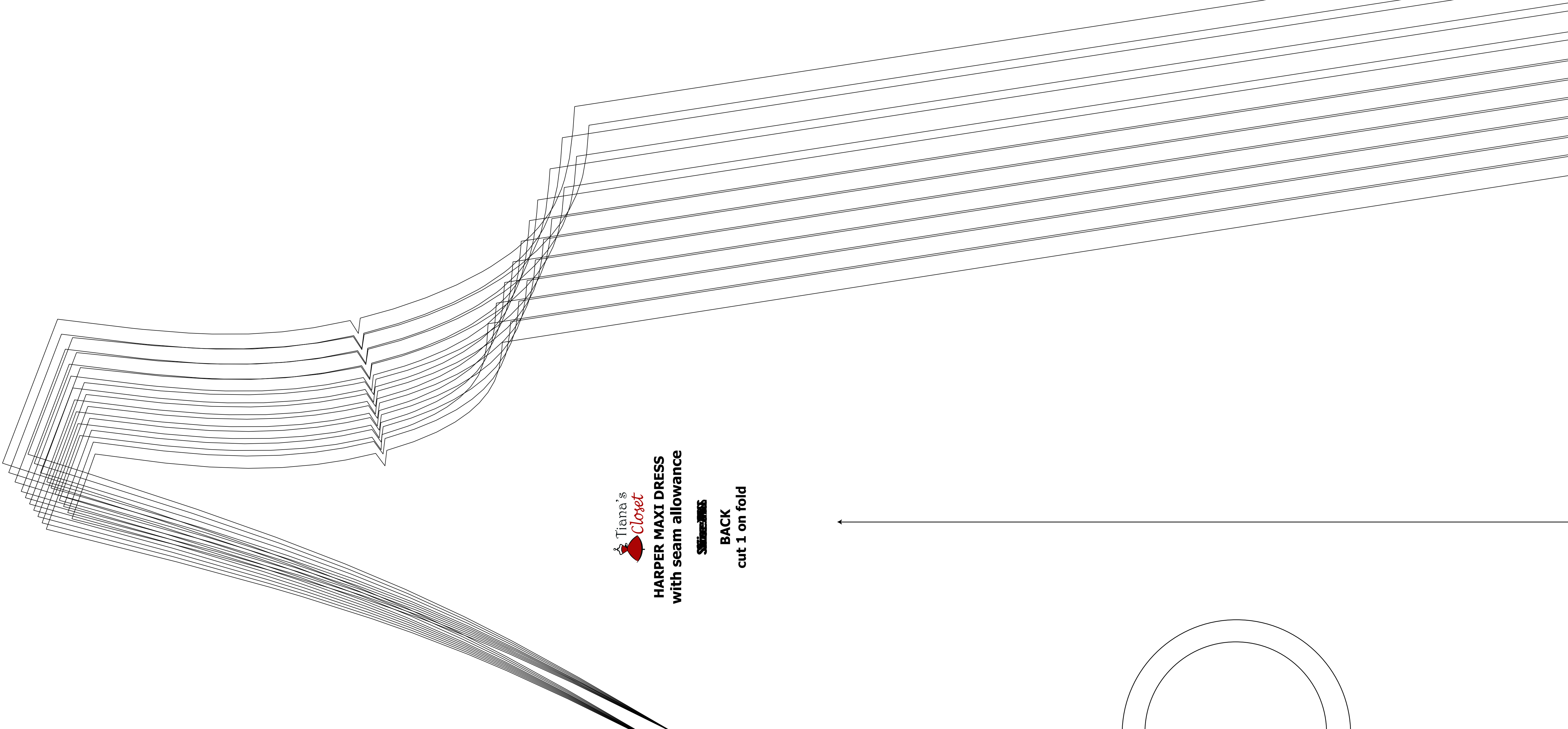
Always print the top edge of the file and measure to avoid errors of print.

After printing the pattern, cut the paper along the lines (solid, cut, align and fold) to check the quality of the equipment. The separate page A & B is used to check the paper and the quality of the equipment. Please see the right page for the test square.

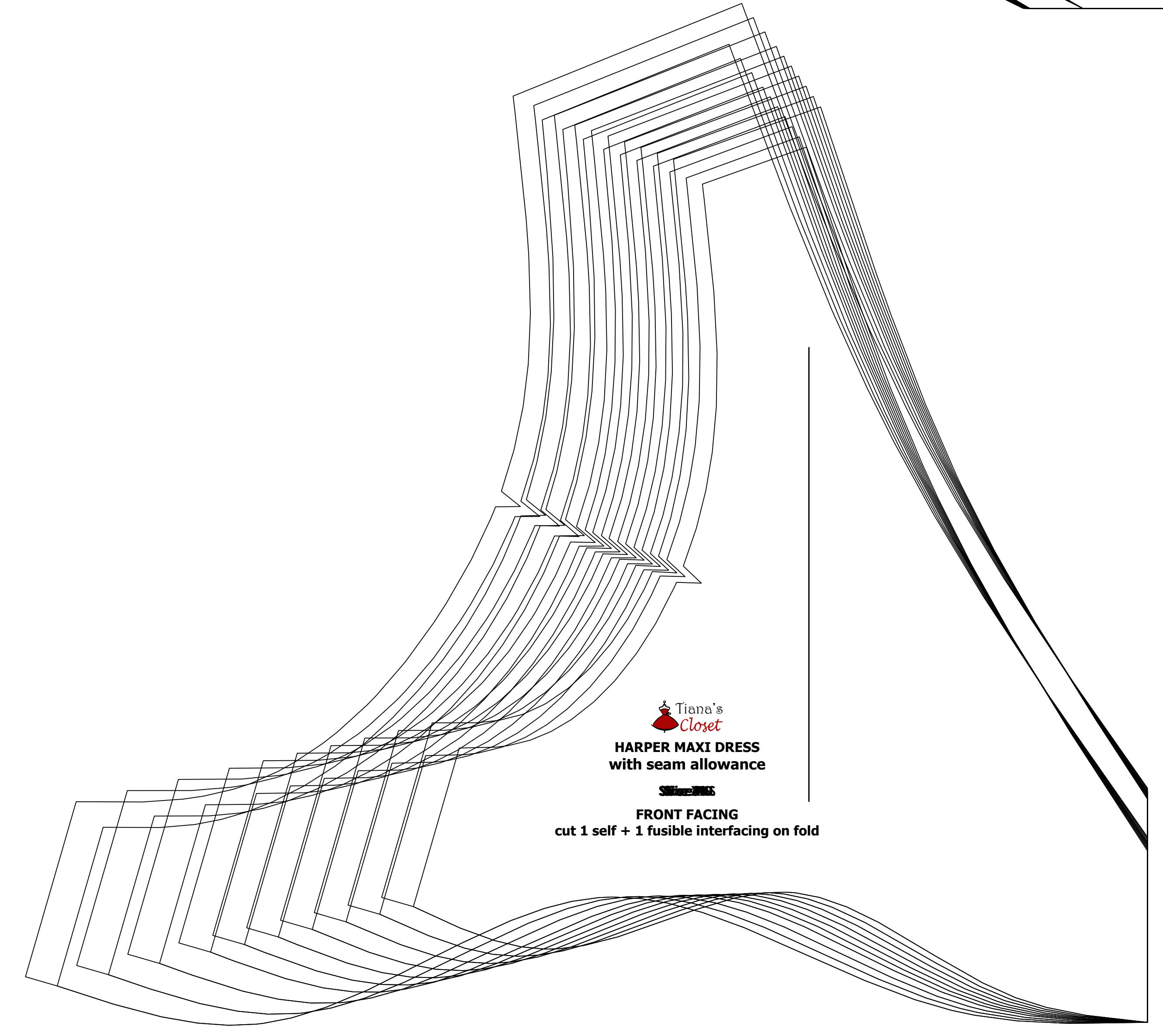
You can find more information for printing sewing patterns on Tiana's Closet website: <http://www.tianascloset.com/patterns/how-to-print-sewing-patterns>



Tiana's Closet  
**HARPER MAXI DRESS**  
 with seam allowance  
 FRONT  
 cut 1 on fold



Tiana's Closet  
**HARPER MAXI DRESS**  
 with seam allowance  
 BACK  
 cut 1 on fold



Tiana's Closet  
**HARPER MAXI DRESS**  
 with seam allowance  
 FRONT FACING  
 cut 1 self + 1 fusible interfacing on fold

