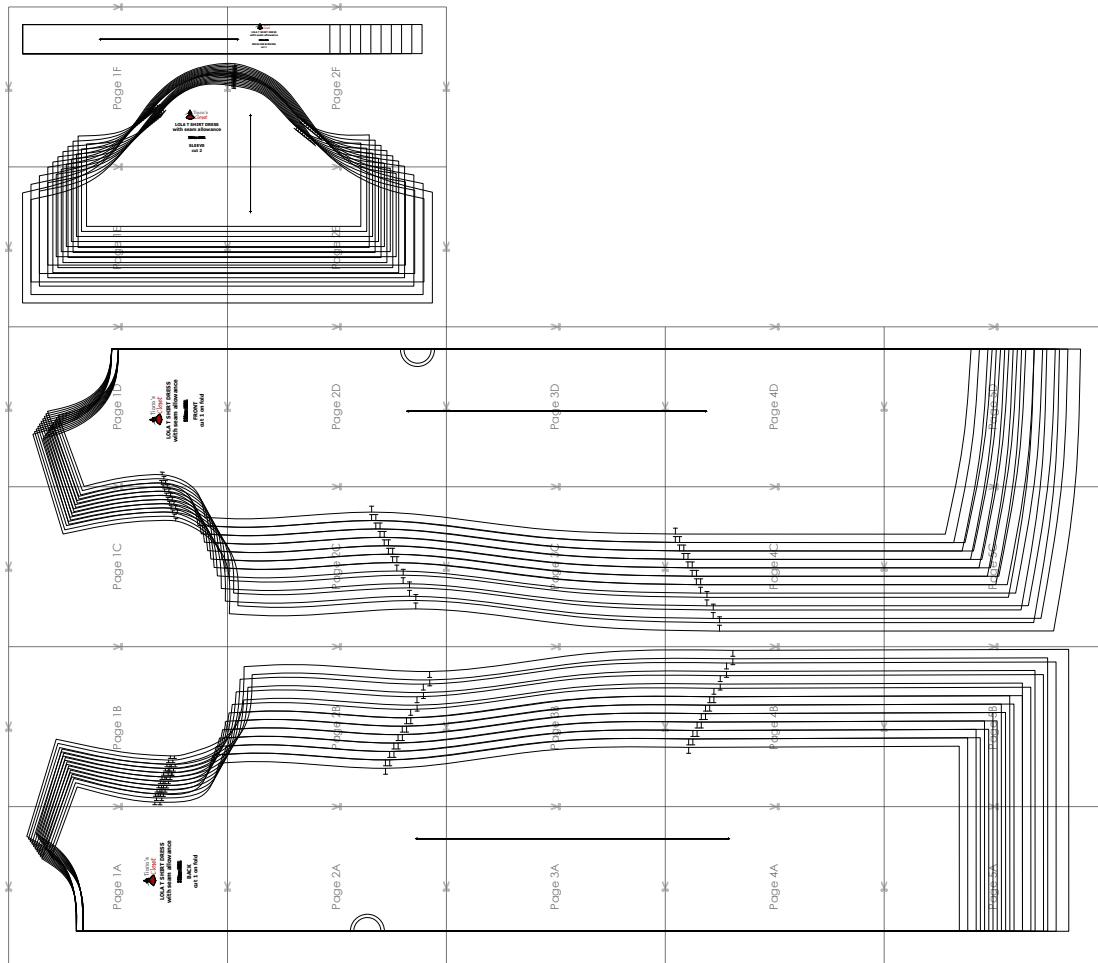


SIZE TABLE
TIANA'S CLOSET SEWING PATTERNS

| Size code | XXS | XS | S | M | L | XL | XXL | 3XL | 4XL | 5XL | |
|-----------|------------|------|------|------|------|------|------|------|------|------|------|
| Bust | centimeter | 80 | 84 | 88 | 92 | 96 | 100 | 104 | 110 | 116 | 122 |
| | inch | 31.5 | 33.1 | 34.6 | 36.2 | 37.8 | 39.4 | 40.9 | 43.3 | 45.7 | 47.2 |
| Waist | centimeter | 60 | 64 | 68 | 72 | 76 | 80 | 84 | 90 | 96 | 102 |
| | inch | 23.6 | 25.2 | 26.8 | 28.3 | 29.9 | 31.5 | 33.1 | 35.4 | 37.8 | 40.2 |
| Hip | centimeter | 88 | 92 | 96 | 100 | 104 | 108 | 112 | 118 | 124 | 130 |
| | inch | 34.6 | 36.2 | 37.8 | 39.4 | 40.9 | 42.5 | 44.1 | 46.5 | 49.6 | 52.0 |

PRINTING INSTRUCTIONS

- Tiana's Closet sewing patterns are made in Layered PDF format, which means all sizes are saved in one file and can be shown or hidden. It is recommended to use Adobe Acrobat Reader (paid version on Mac OS, free on Windows) or Foxit PDF Reader (free, works on Windows only) to read the file correctly. In order to choose the desired size(s), go to Layers tab of your PDF reader, uncheck all boxes except for the desired size(s) and the box Print for all sizes.
- When printing the pattern, go to Print settings, in the tab Scale choose Custom scale: 100% (or Scaling: None or Actual Size) to print true to size. Note: some computers print smaller than true size even when you choose 100% scale, so you will have to adjust the scale to a little larger than 100% and measure the test square until you get the true size.
- The test square is 10 centimeters (horizontally) and 4 inches (vertically).
- Always print the first page of the file and measure to avoid waste of paper.
- After printing the pattern, cut the pages along the lines with scissors icon, align and tape the pages according to their sequences. For example, page 1A is taped to page 1B in a row, and page 1A is taped to page 2A in a column. Please see the image below to see how the pages line up.
- You can find photo instruction for printing sewing patterns on Tiana's Closet website: <https://tianas-closet.com/index.php/how-to-print-tianas-closet-patterns/>



For more ideas and free sewing patterns, visit <http://tianas-closet.com>



Page 1A



**LOLA T SHIRT DRESS
with seam allowance**

~~Size M~~

**BACK
cut 1 on fold**



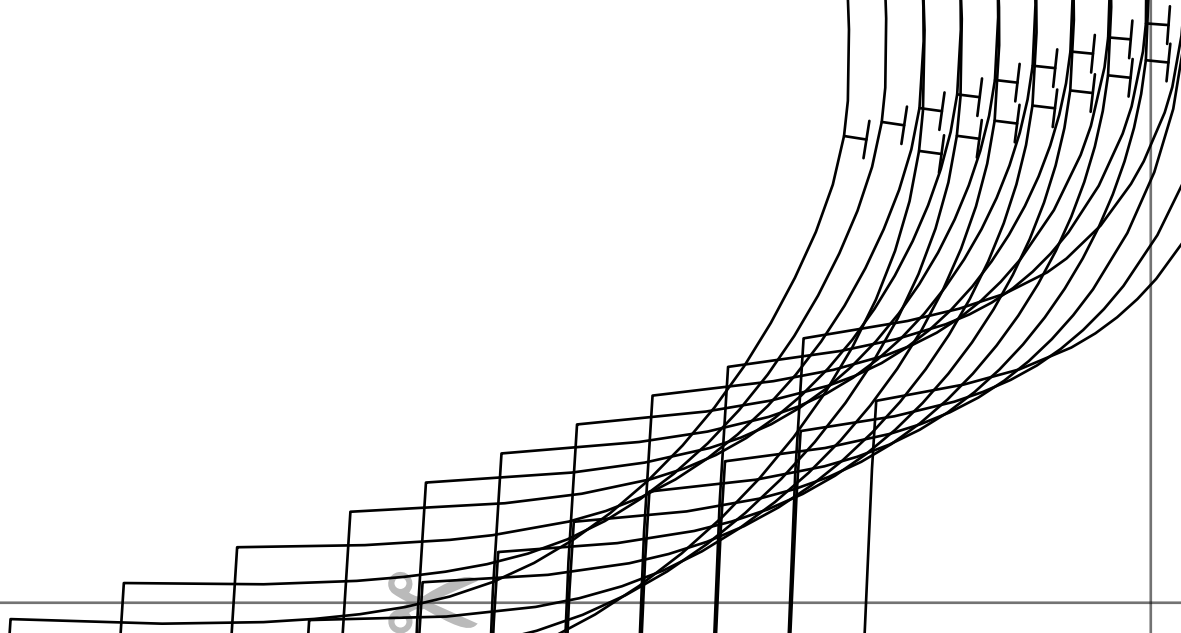
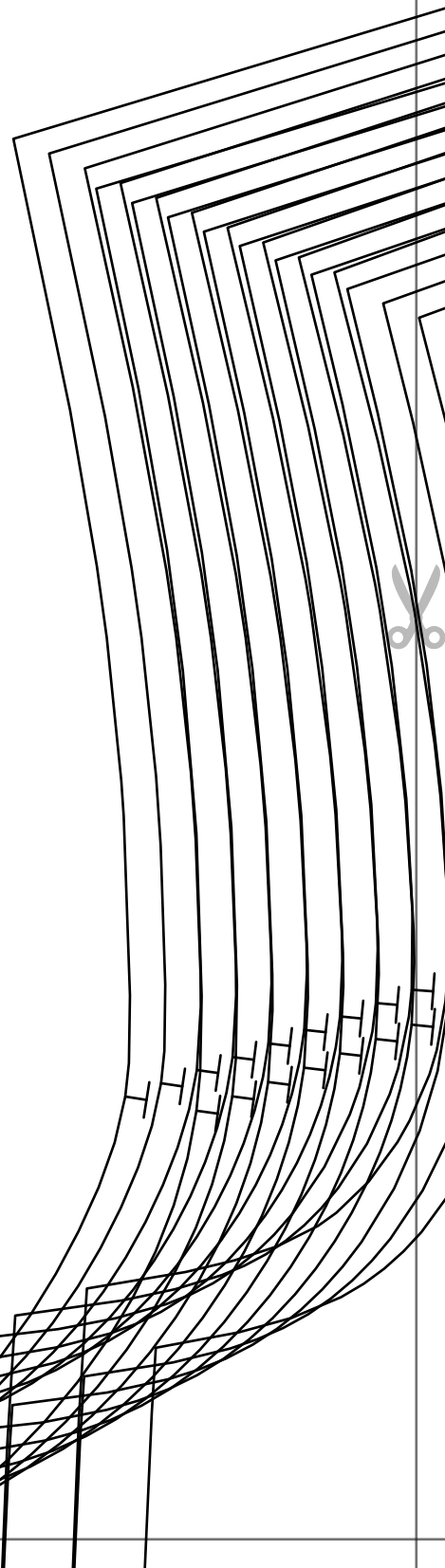


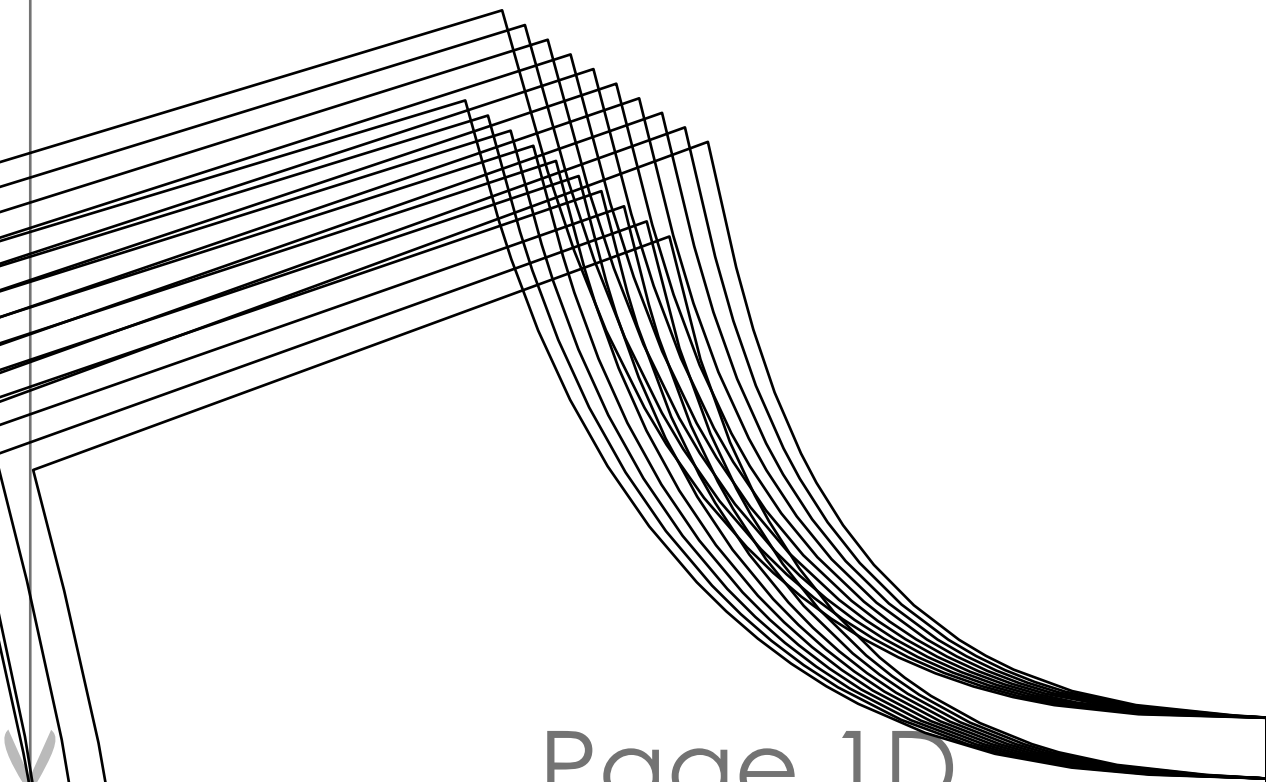
Page 1B





Page 1C





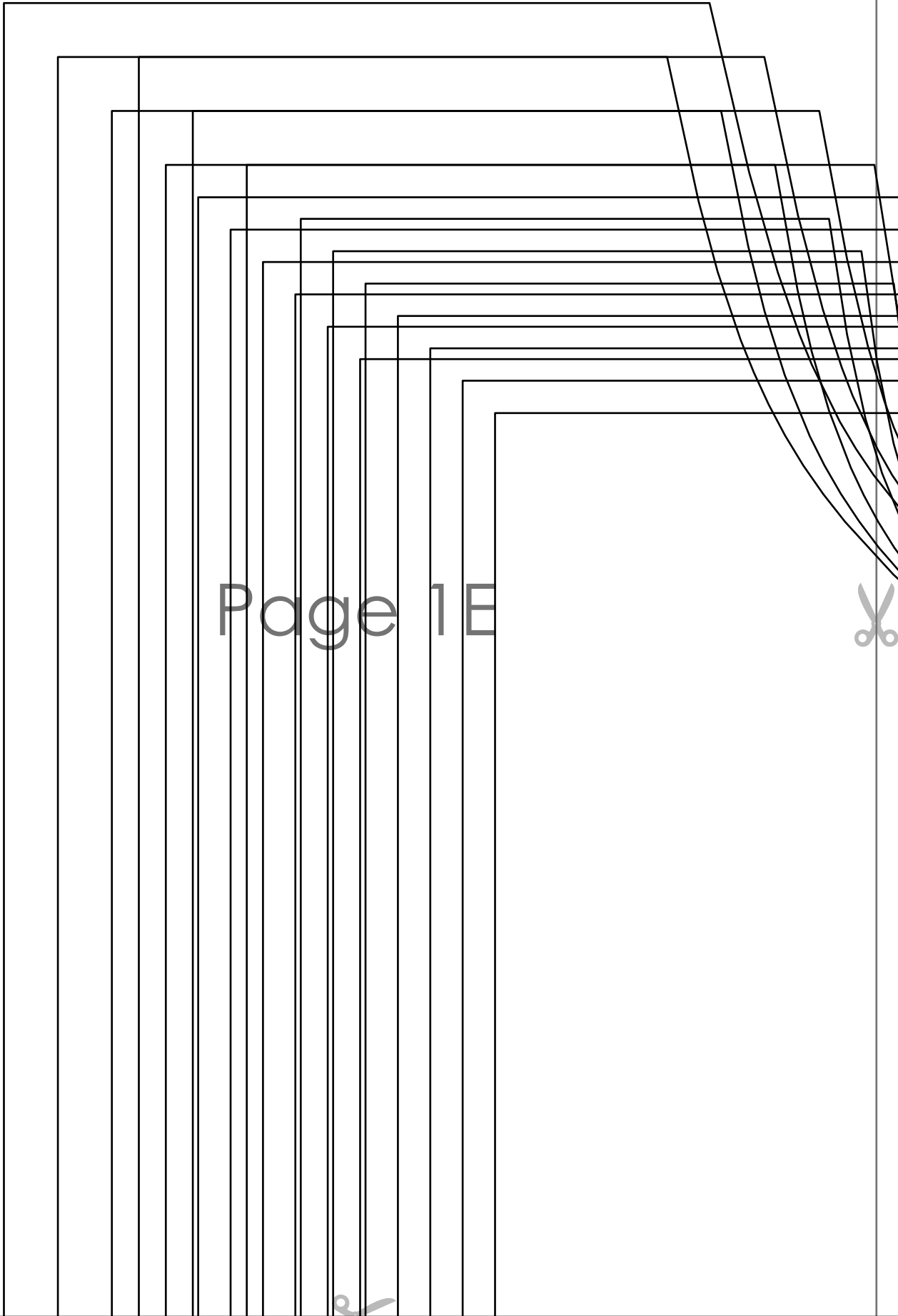
Page 1D



**LOLA T SHIRT DRESS
with seam allowance**

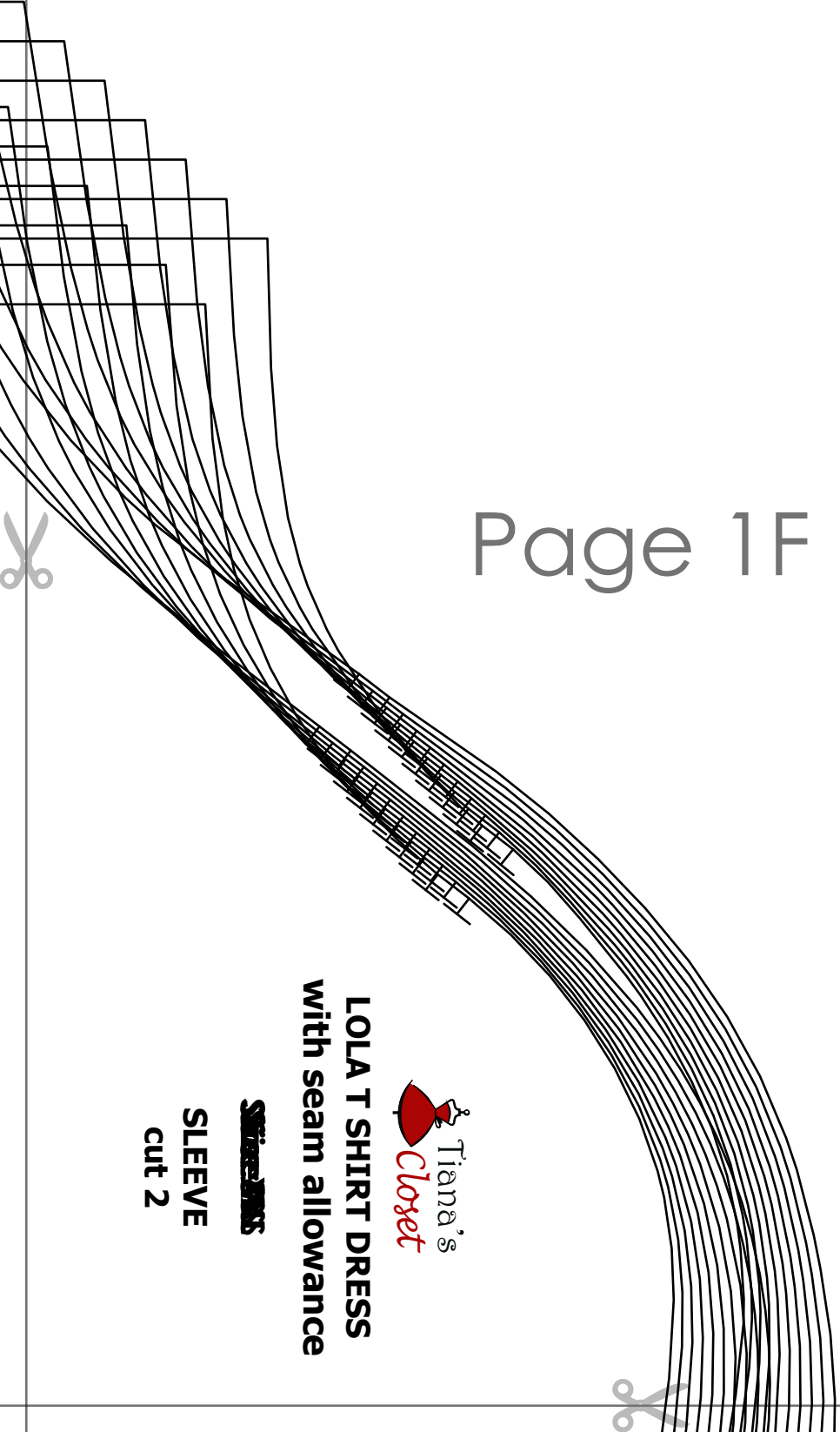
SIZE: 28-38

**FRONT
cut 1 on fold**



Page 1 E





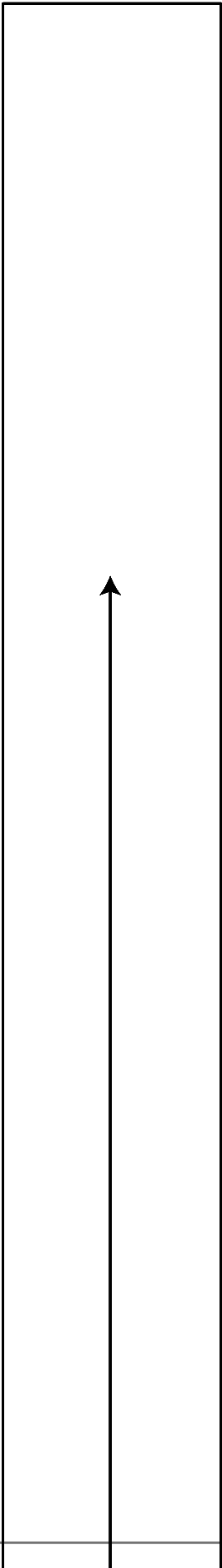
Page 1F



LOLA T SHIRT DRESS
with seam allowance

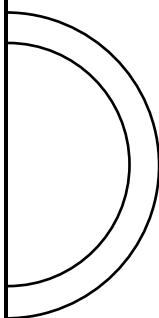
~~SLEEVE~~

SLEEVE
cut 2

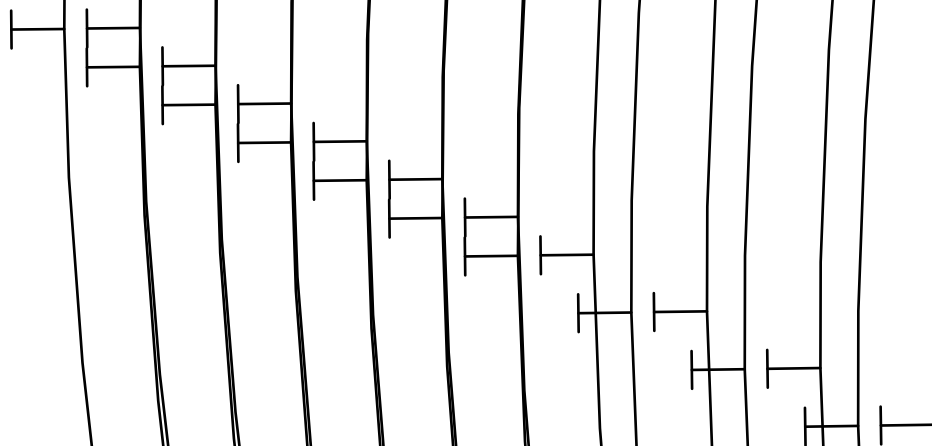




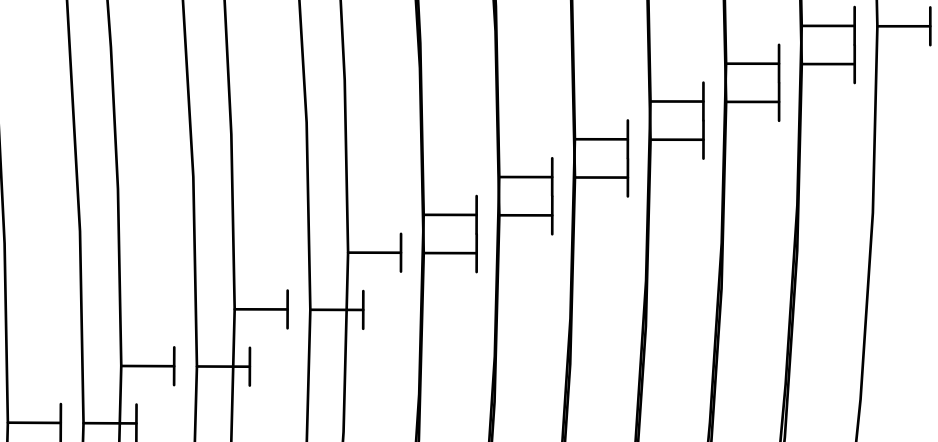
Page 2A



Page 2B

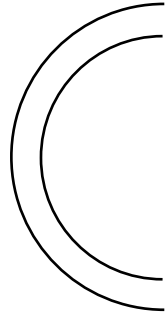


Page 2C





Page 2D





Page 2E





Page 3A



Page 3B



Page 3C

Page 3D



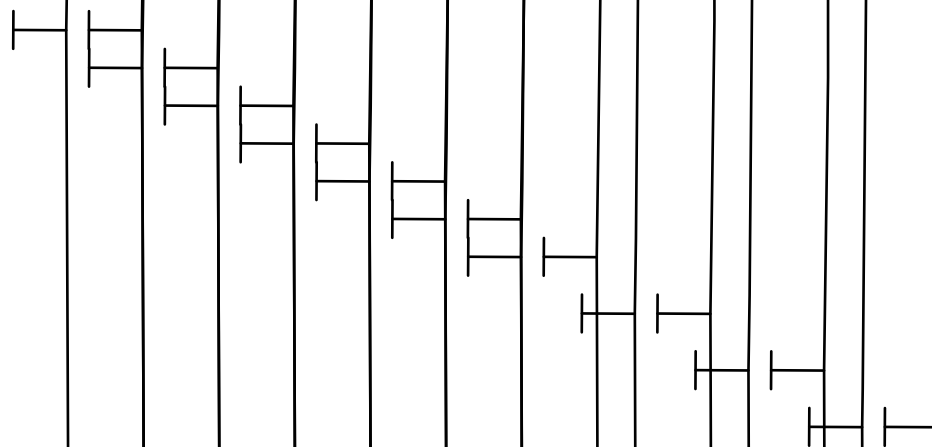


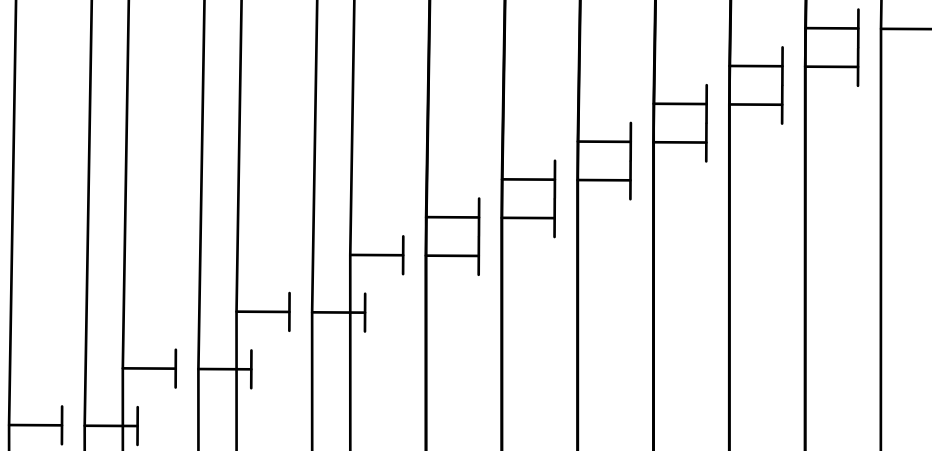
Page 4A



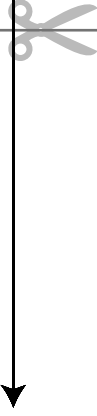


Page 4B





Page 4C



Page 4D





Page 5A





Page 5B



Page 5C





Page 5D

