

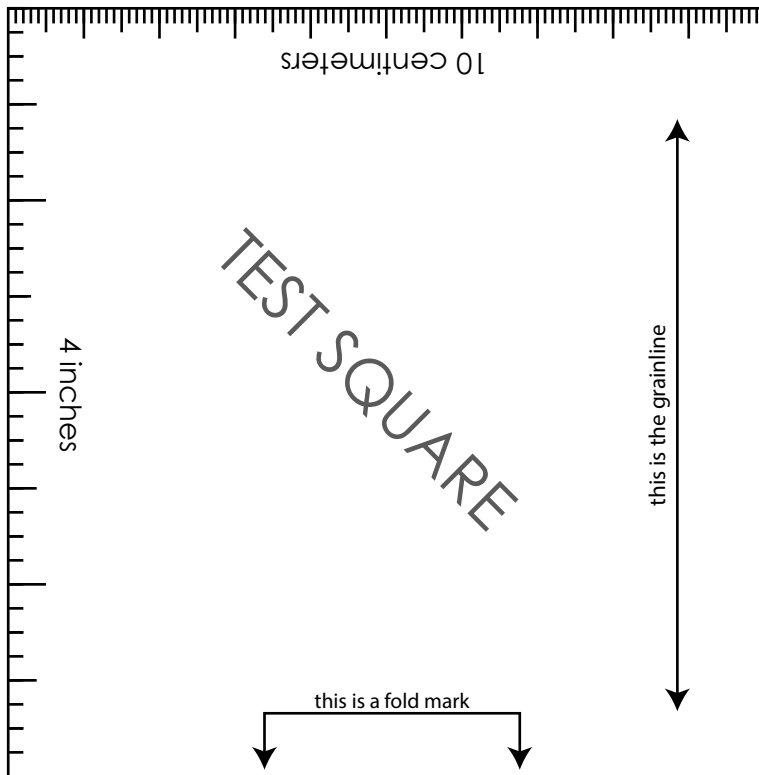


**LITTLE GIRL'S RUFFLE SLEEVE DRESS  
with seam allowance**

~~SIZE 2-4~~

**BACK  
cut 1 on fold**

Page 1



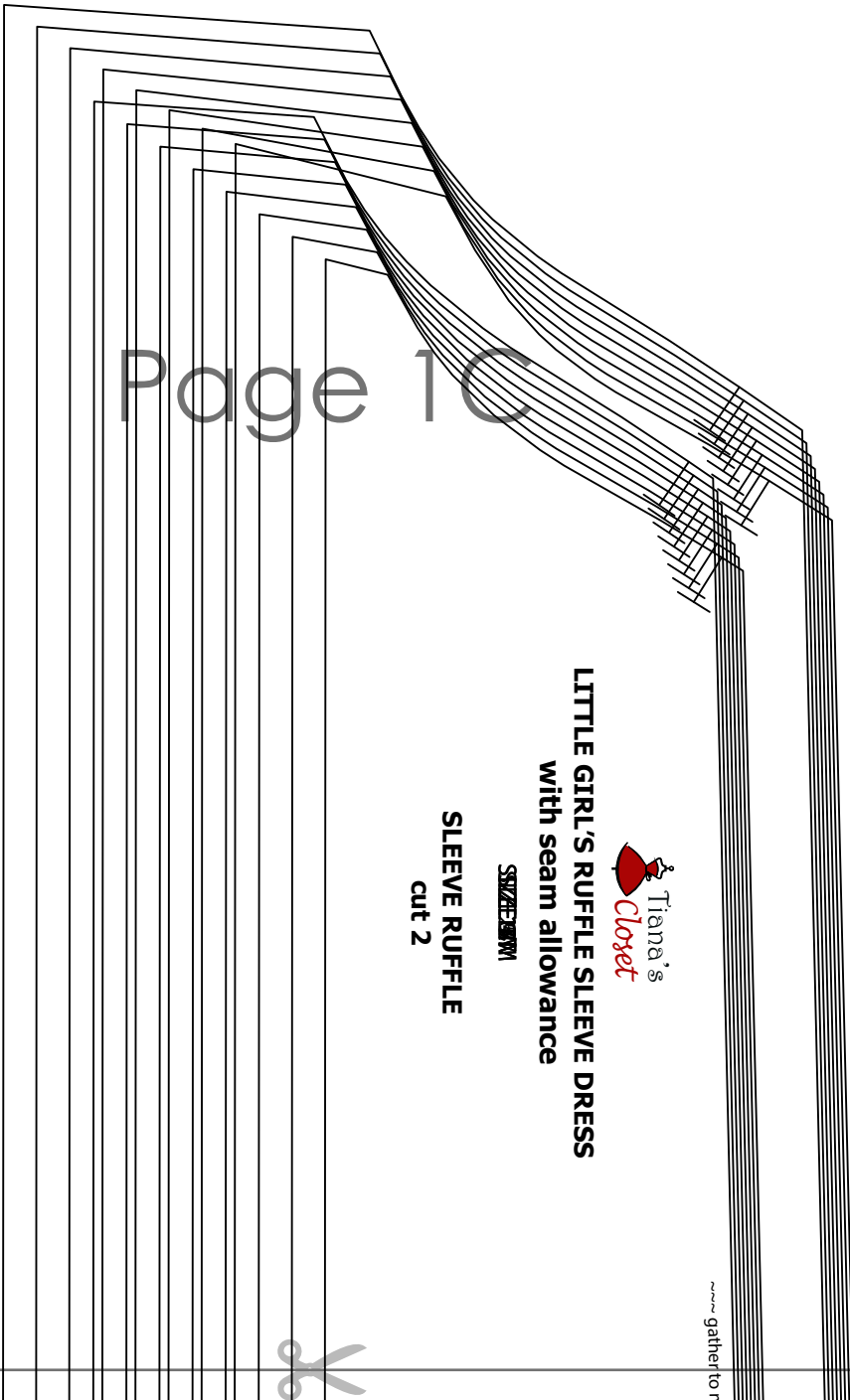
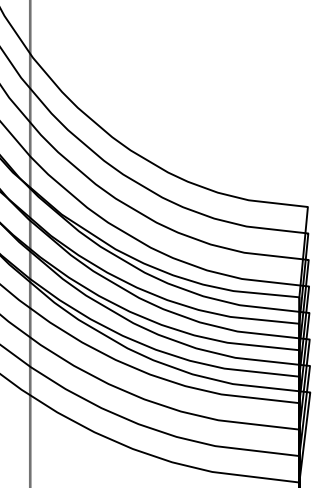
Page 11B



**LITTLE GIRL'S RUFFLE SLEEVE DRESS  
with seam allowance**

**~~SIZE 2-3M~~**

**FRONT  
cut 1 on fold**



Page 1C

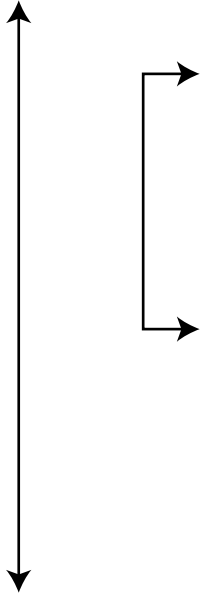


**LITTLE GIRL'S RUFFLE SLEEVE DRESS**  
with seam allowance

**SIZE: 2-4**

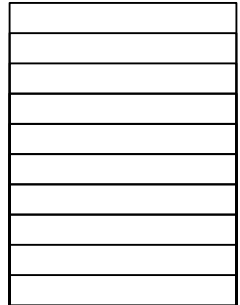
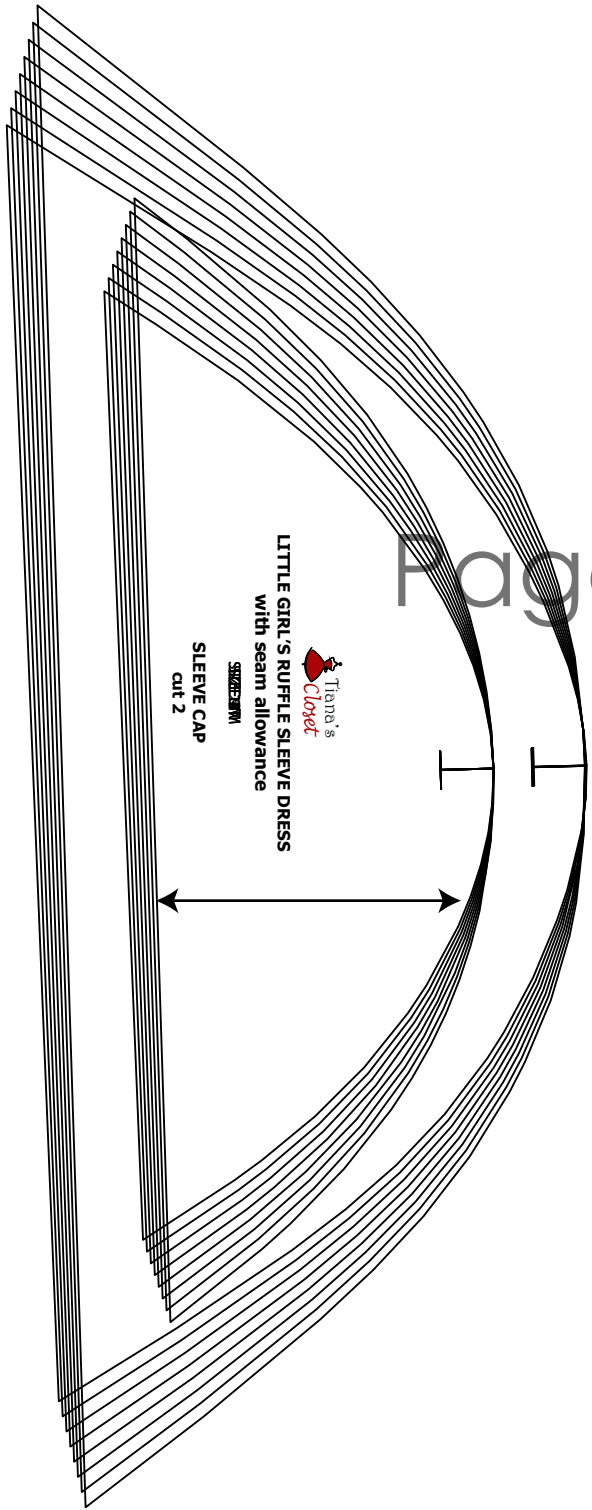
**SLEEVE RUFFLE**  
cut 2

gather to r



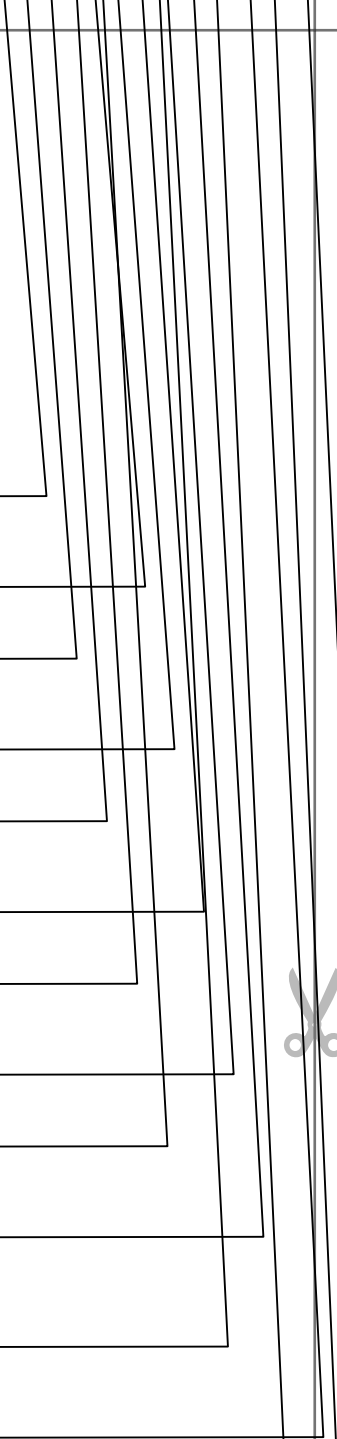
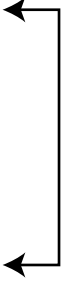


# Page 1D



Tiana's Closet  
LITTLE GIRL'S RUFFLE SLEEVE DRESS  
with seam allowance  
SIZE 2-3MM  
**NECKLINE BINDING**  
cut 1





Page 2A



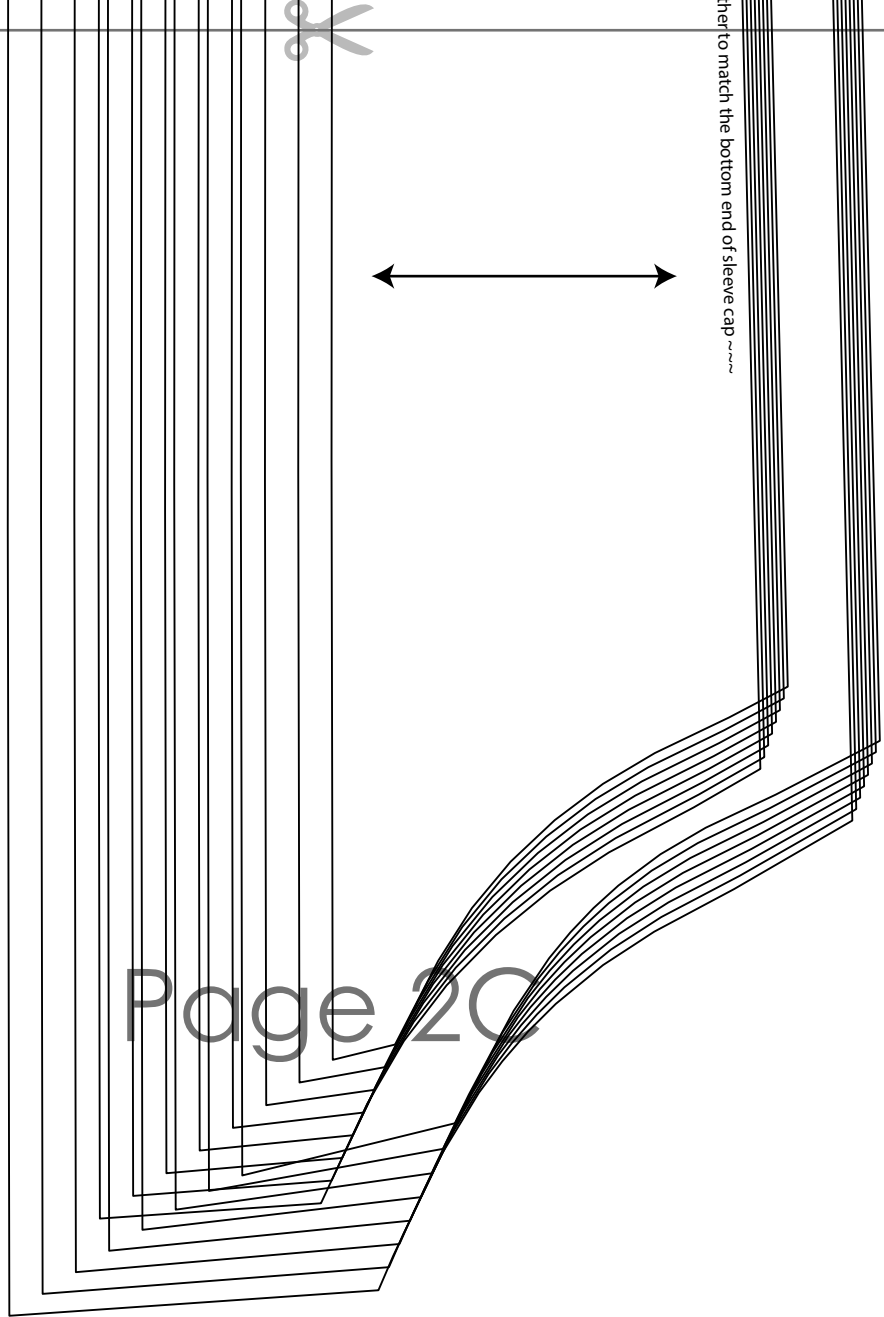


For more ideas and free sewing patterns, visit <http://ti>



Page 2B

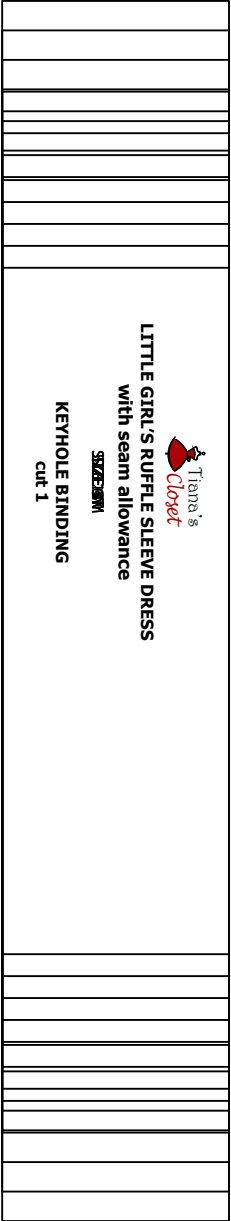




her to match the bottom end of sleeve cap ~~~

Page 20





Page 2D

