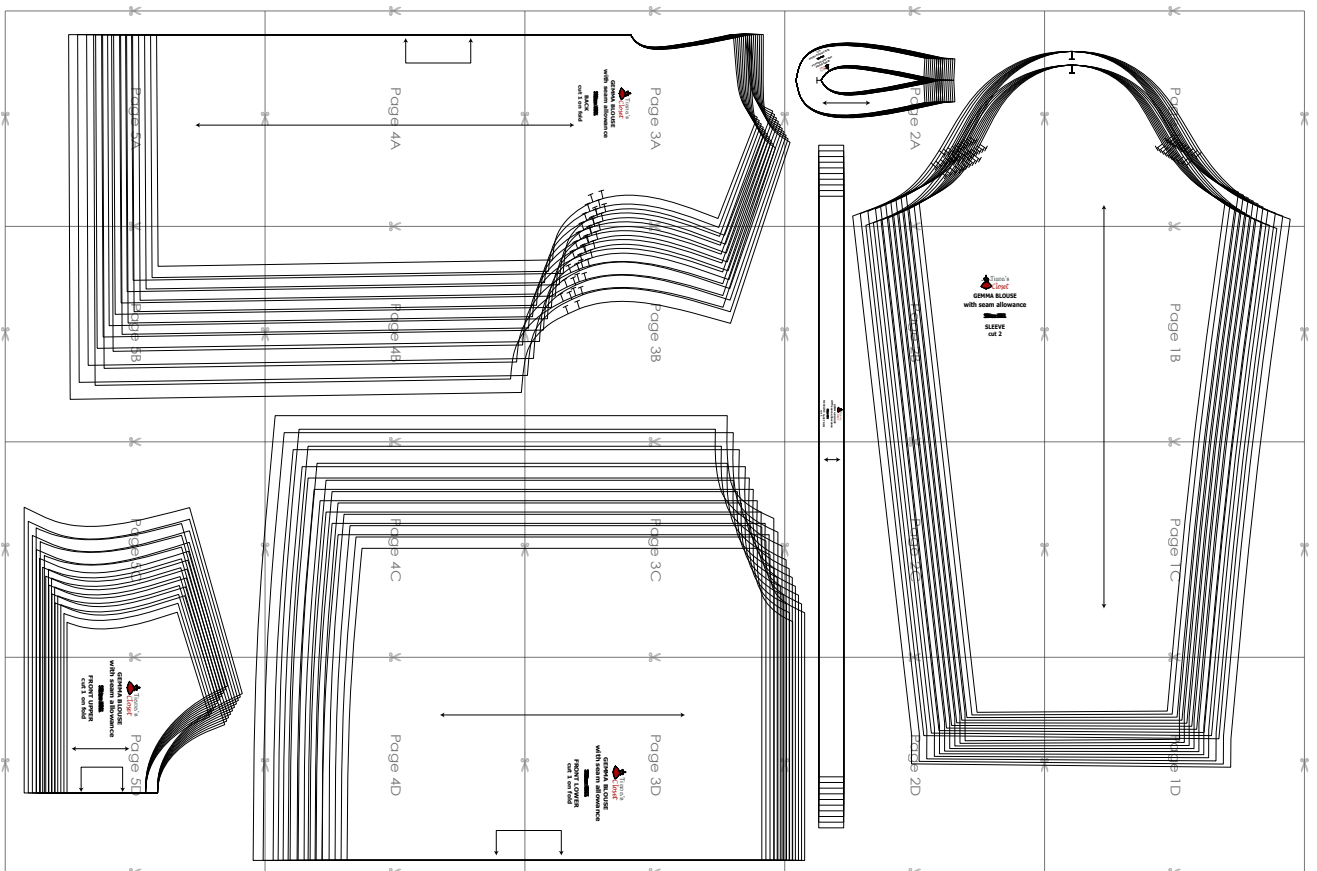


SIZE TABLE
TIANA'S CLOSET SEWING PATTERNS

| Size code | XXS | XS | S | M | L | XL | XXL | 3XL | 4XL | 5XL | |
|-----------|------------|------|------|------|------|------|------|------|------|------|------|
| Bust | centimeter | 80 | 84 | 88 | 92 | 96 | 100 | 104 | 110 | 116 | 122 |
| | inch | 31.5 | 33.1 | 34.6 | 36.2 | 37.8 | 39.4 | 40.9 | 43.3 | 45.7 | 47.2 |
| Waist | centimeter | 60 | 64 | 68 | 72 | 76 | 80 | 84 | 90 | 96 | 102 |
| | inch | 23.6 | 25.2 | 26.8 | 28.3 | 29.9 | 31.5 | 33.1 | 35.4 | 37.8 | 40.2 |
| Hip | centimeter | 88 | 92 | 96 | 100 | 104 | 108 | 112 | 118 | 124 | 130 |
| | inch | 34.6 | 36.2 | 37.8 | 39.4 | 40.9 | 42.5 | 44.1 | 46.5 | 49.6 | 52.0 |

PRINTING INSTRUCTIONS

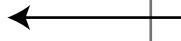
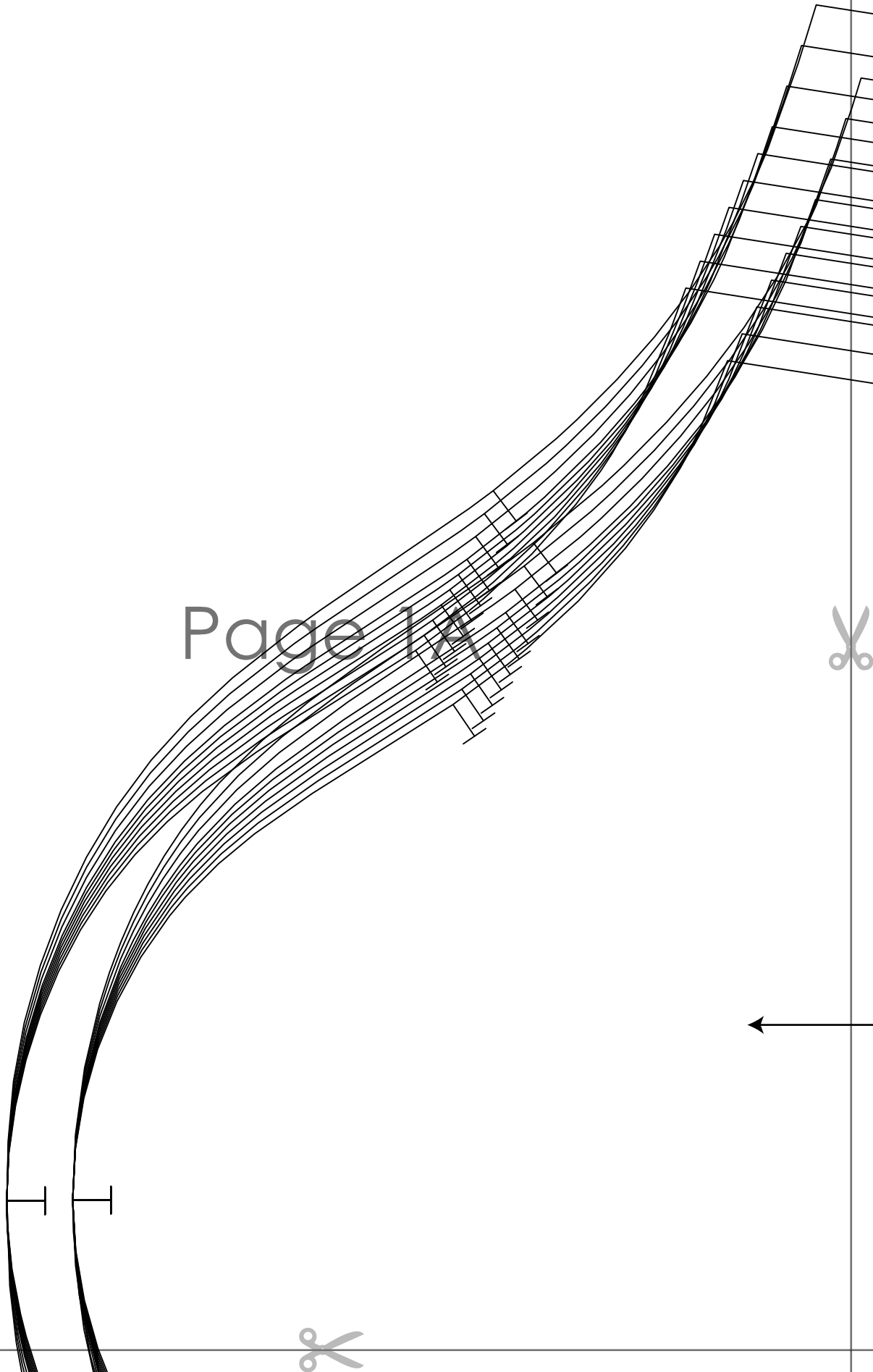
- Tiana's Closet sewing patterns are made in Layered PDF format, which means all sizes are saved in one file and can be shown or hidden. It is recommended to use Adobe Acrobat Reader (paid version on Mac OS, free on Windows) or Foxit PDF Reader (free, works on Windows only) to read the file correctly. In order to choose the desired size(s), go to Layers tab of your PDF reader, uncheck all boxes except for the desired size(s) and the box Print for all sizes.
- When printing the pattern, go to Print settings, in the tab Scale choose Custom scale: 100% (or Scaling: None or Actual Size) to print true to size. Note: some computers print smaller than true size even when you choose 100% scale, so you will have to adjust the scale to a little larger than 100% and measure the test square until you get the true size.
- The test square is 10 centimeters (horizontally) and 4 inches (vertically).
- Always print the first page of the file and measure to avoid waste of paper.
- After printing the pattern, cut the pages along the lines with scissors icon, align and tape the pages according to their sequences. For example, page 1A is taped to page 1B in a row, and page 1A is taped to page 2A in a column. Please see the image below to see how the pages line up.
- You can find photo instruction for printing sewing patterns on Tiana's Closet website: <https://tianas-closet.com/index.php/how-to-print-tianas-closet-patterns/>

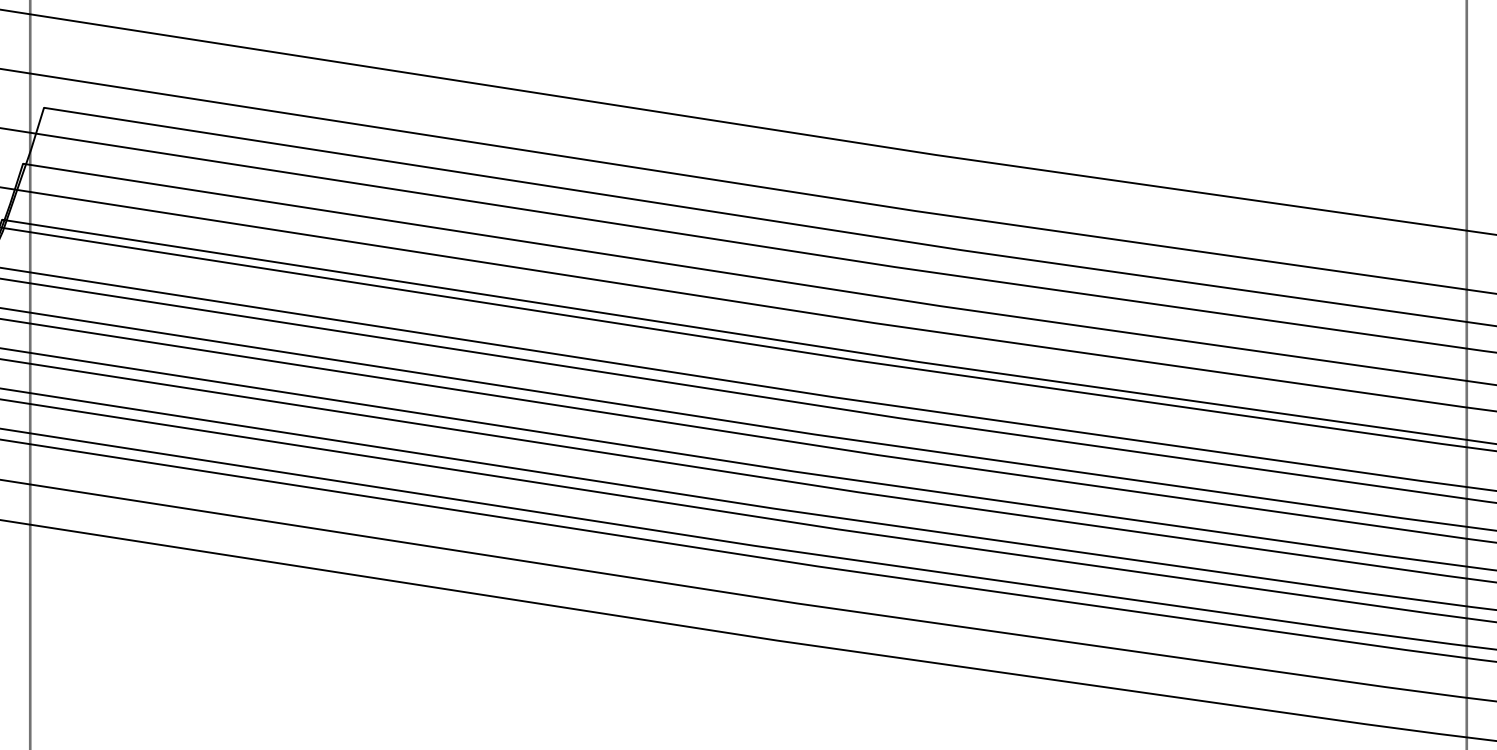


For more ideas and free sewing patterns, visit <http://tianas-closet.com>



Page 1A



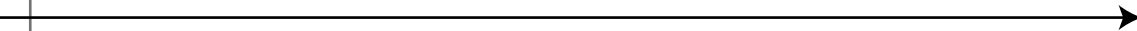


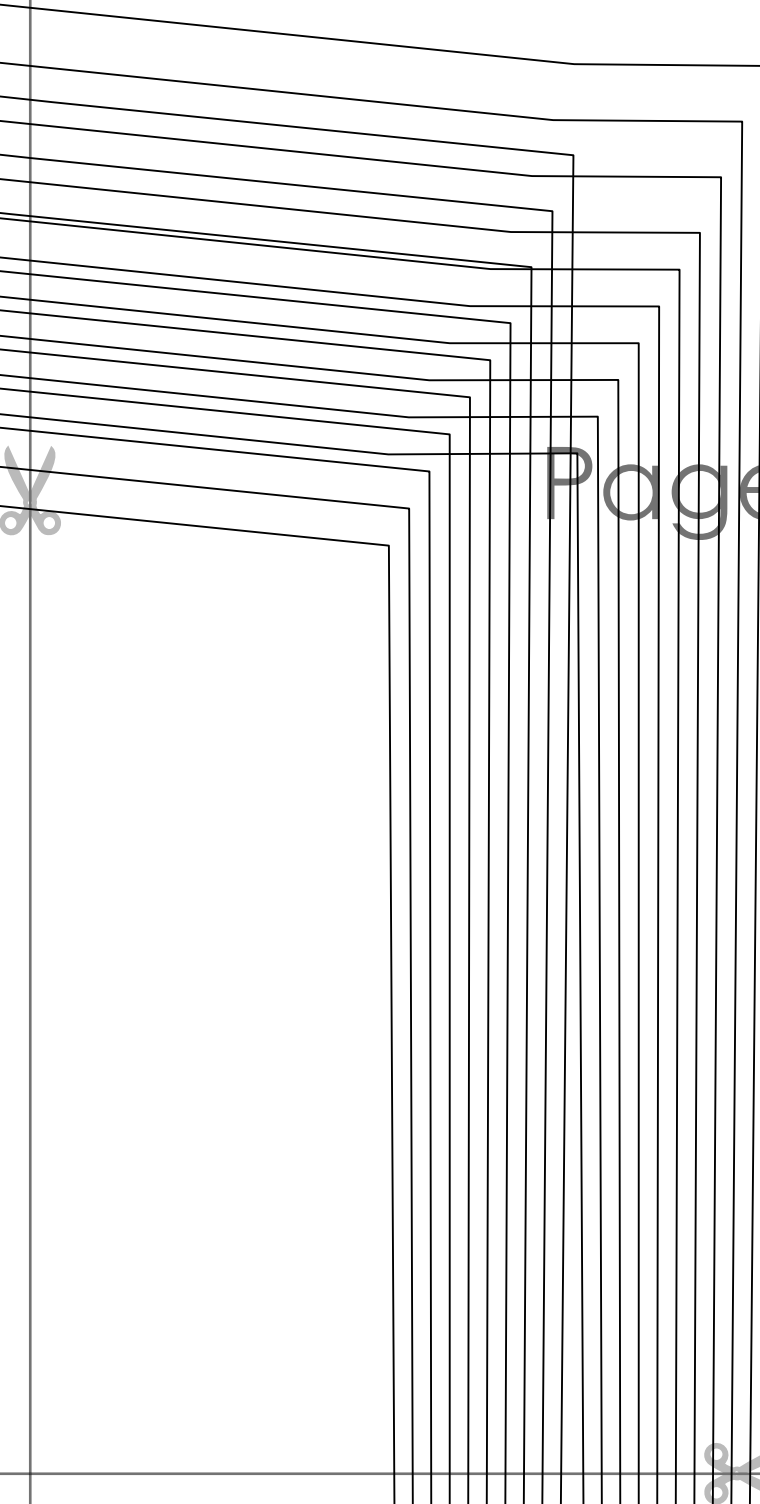
Page 1B





Page 1C

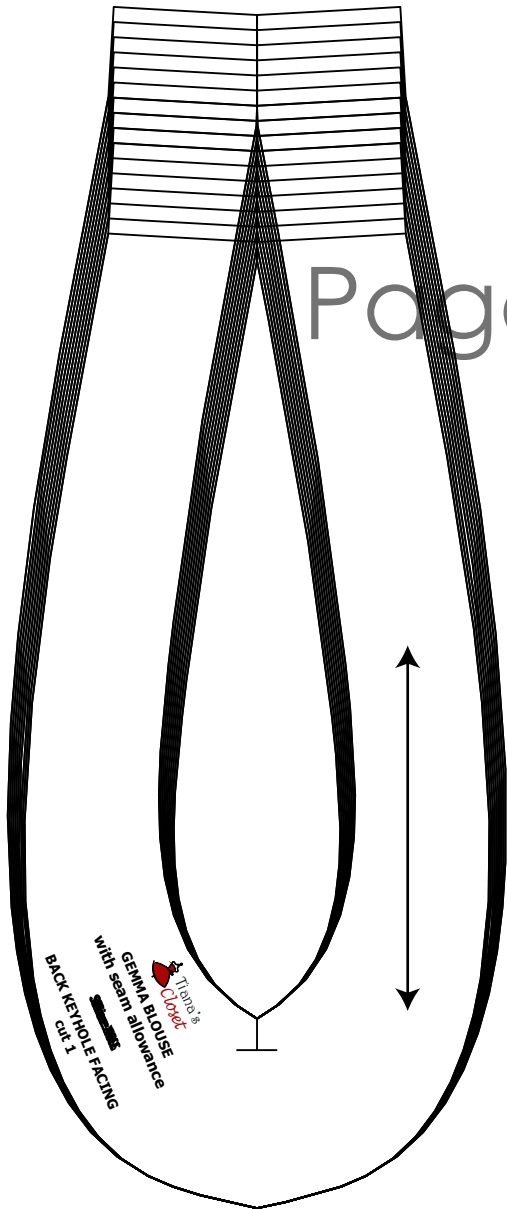




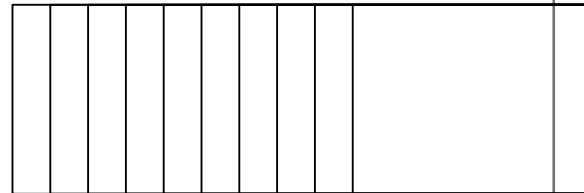
Page 1D



Page 2A



TRUJO & CORDERO
GEMMA BLOUSE
with seam allowance
BACK KEYHOLE FACING
cut 1





GEMMA BLOUSE
with seam allowance

~~SKIRT~~

SLEEVE
cut 2

Page 2B



GEMMA BLOUSE
with seam allowance

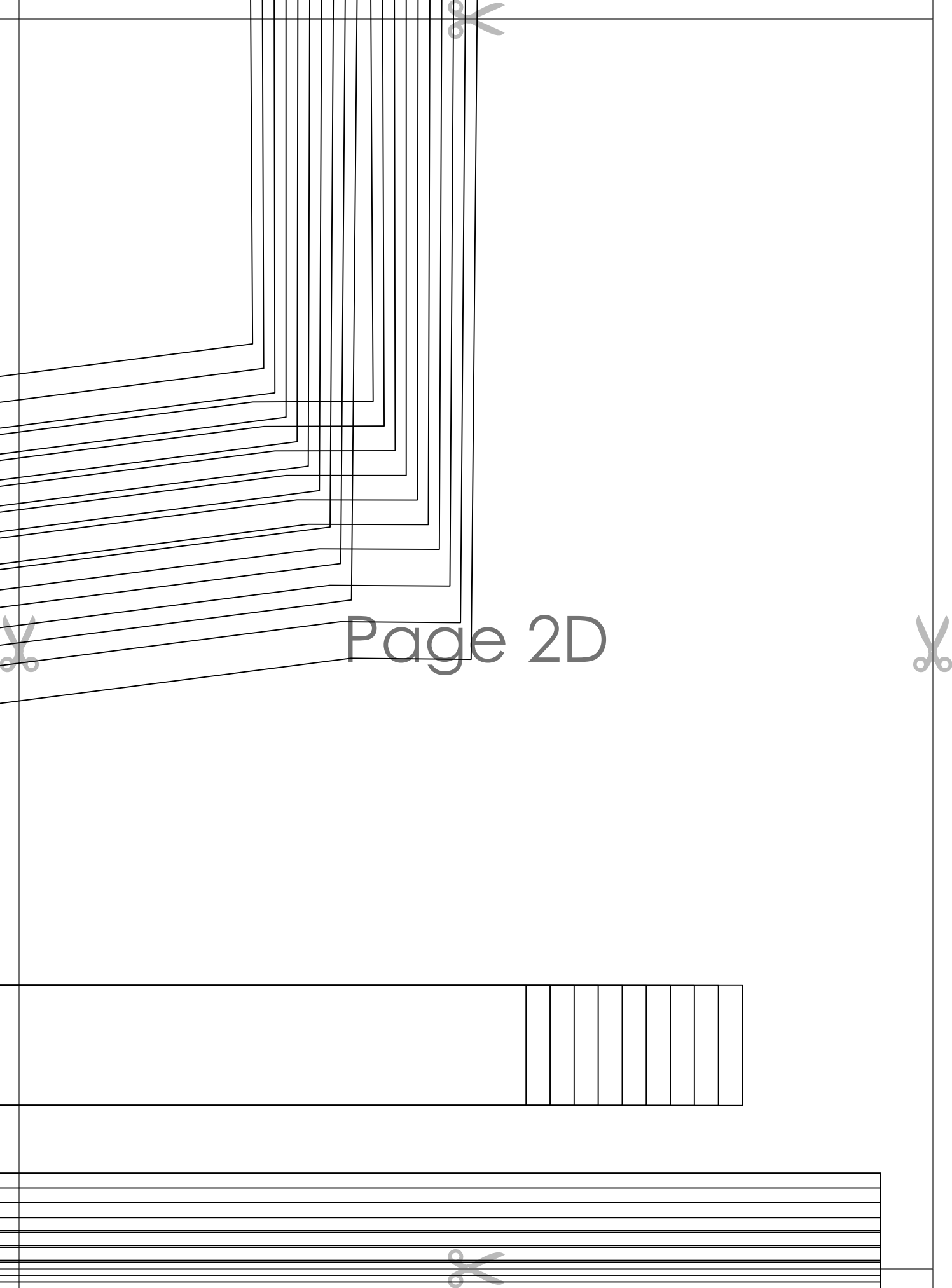
~~SKIRT~~

NECKLINE LACE TRIM
cut 1



Page 2C





Page 2D



Page 3A

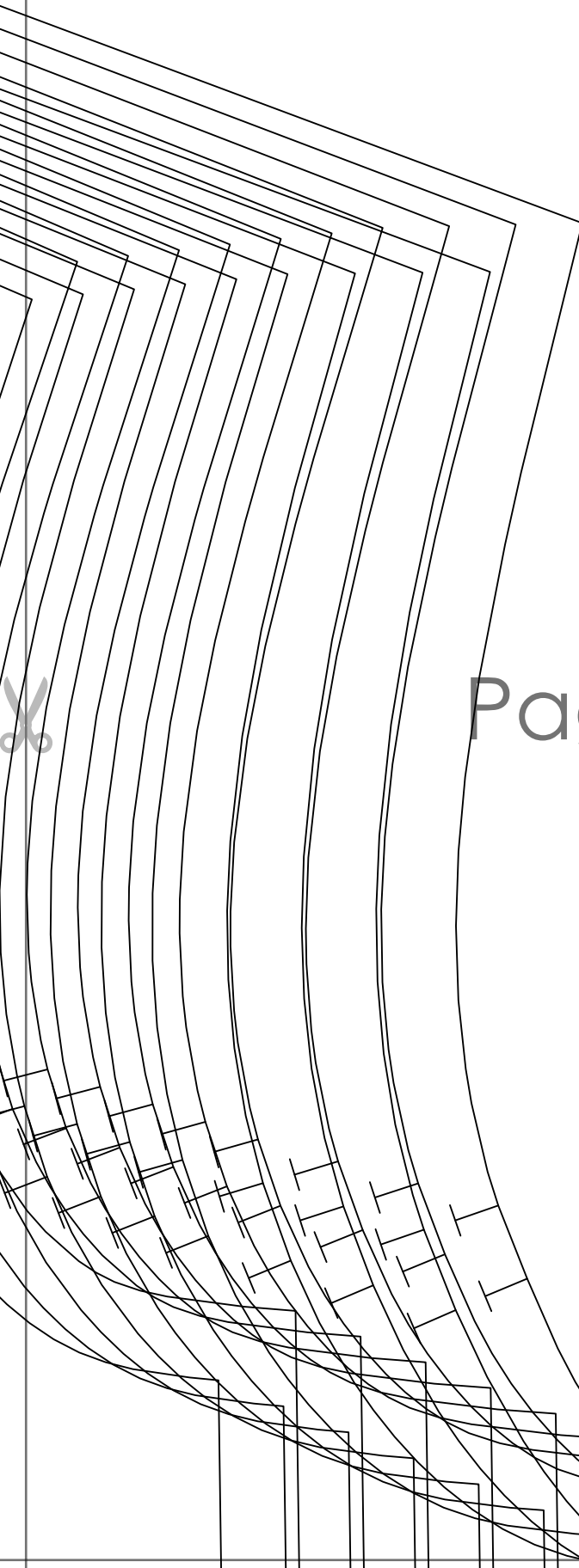


GEMMA BLOUSE with seam allowance

Size: M

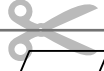
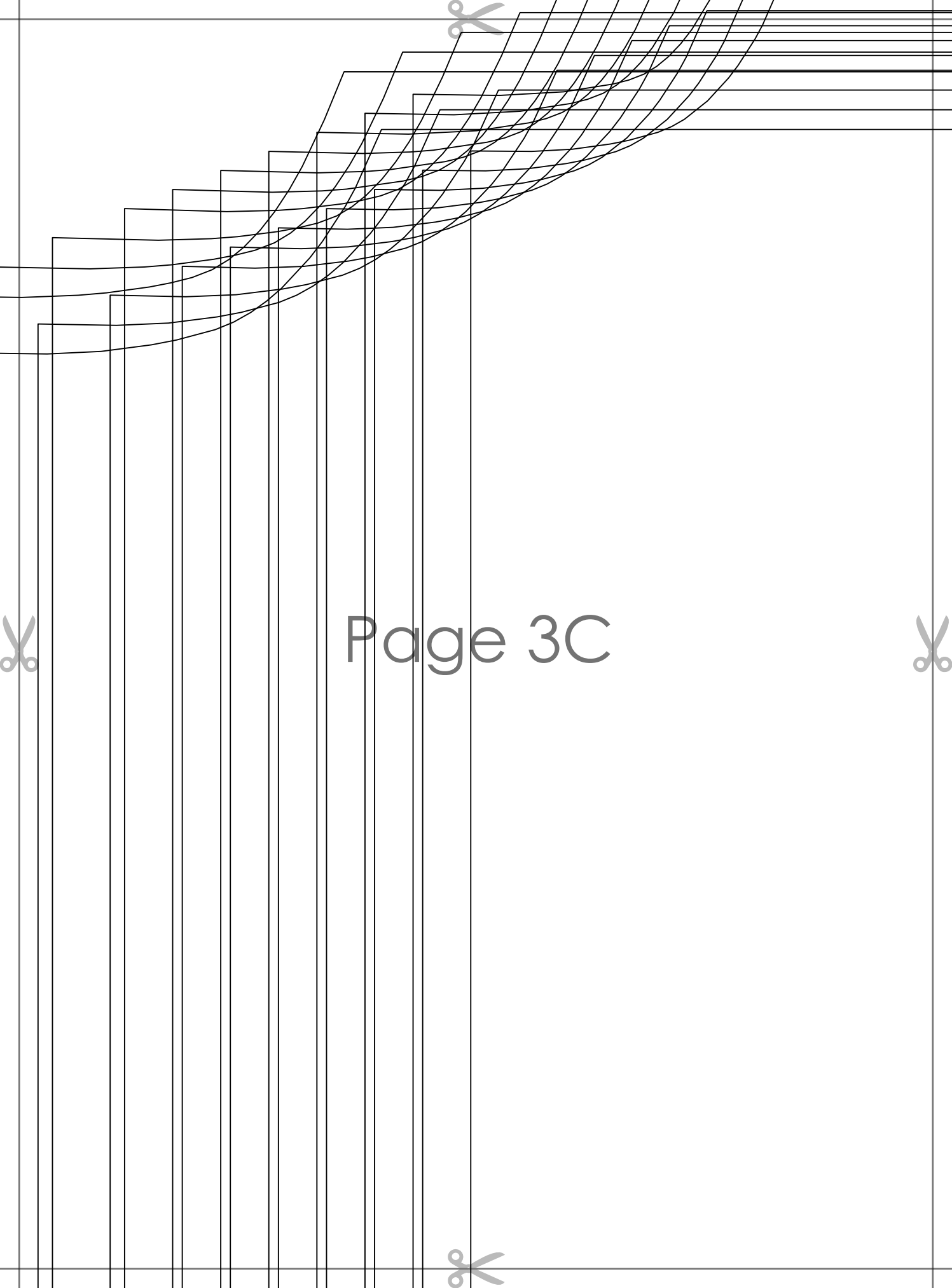
BACK
cut 1 on fold





Page 3B





Page 3C



Page 3D

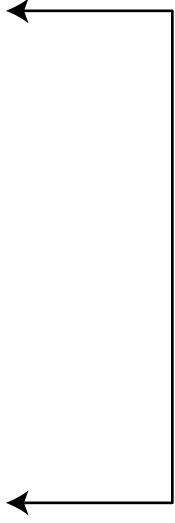


GEMMA BLOUSE
with seam allowance

~~Size 100~~

FRONT LOWER
cut 1 on fold





Page 4A



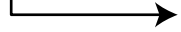
Page 4B





Page 4C





Page 4D



A series of horizontal lines for writing, starting from the top of the lined section and extending to the bottom of the page.





Page 5A

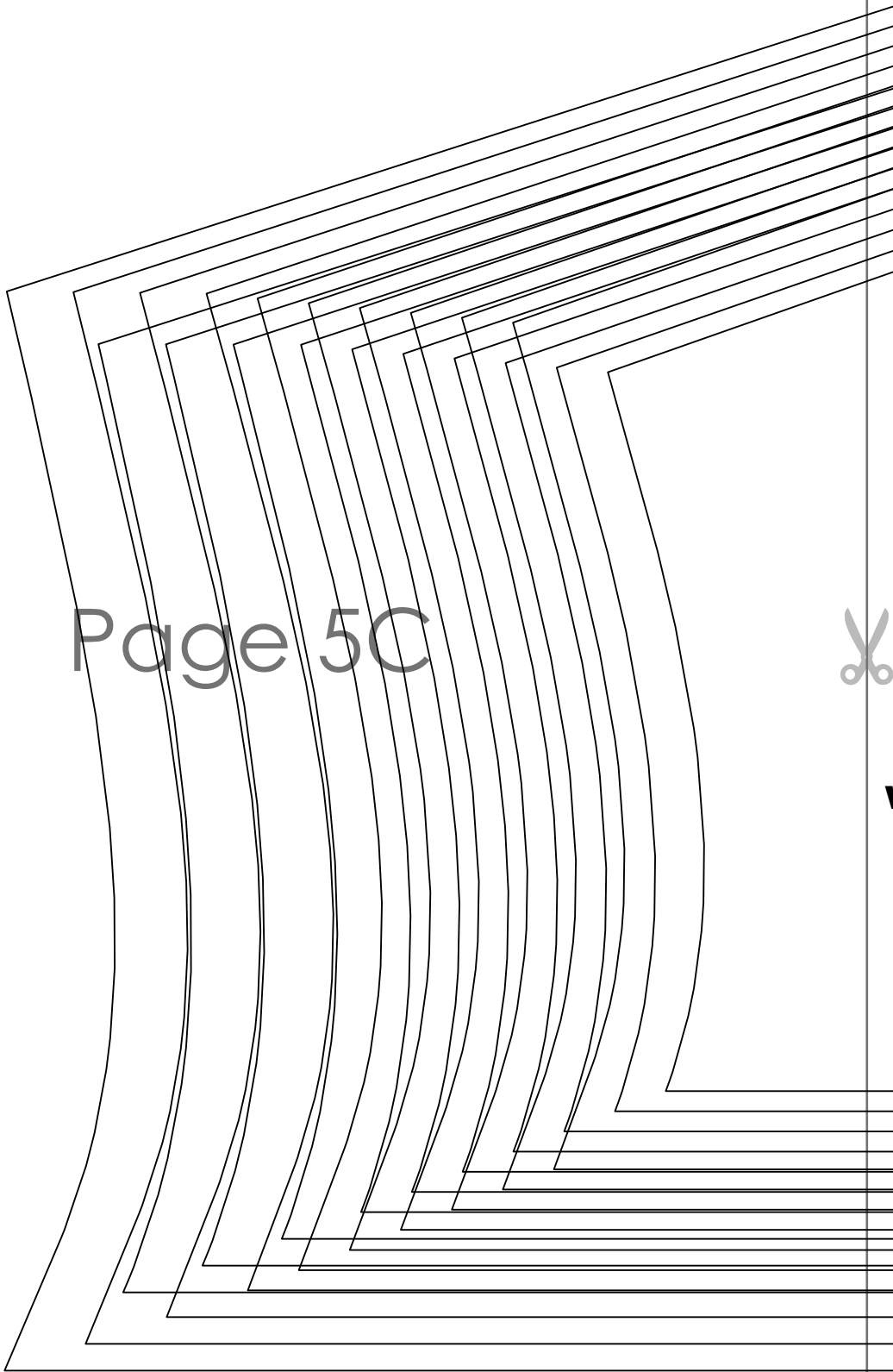


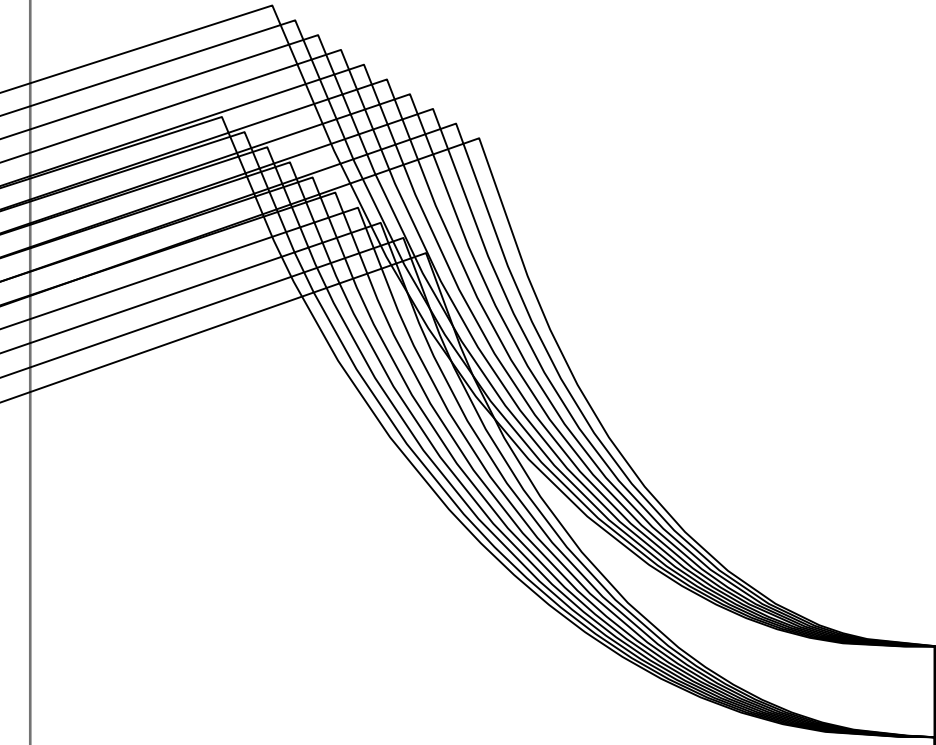


Page 5B



Page 5C





Page 5D

**GEMMA BLOUSE
with seam allowance**

~~Size 20~~

**FRONT UPPER
cut 1 on fold**

