

SIZE TABLE

TIANA'S CLOSET SEWING PATTERNS

Size code		XXS	XS	S	M	L	XL	XXL	3XL	4XL	5XL
Bust	centimeter	80	84	88	92	96	100	104	110	116	122
	inch	31.5	33.1	34.6	36.2	37.8	39.4	40.9	43.3	45.7	47.2
Waist	centimeter	60	64	68	72	76	80	84	90	96	102
	inch	23.6	25.2	26.8	28.3	29.9	31.5	33.1	35.4	37.8	40.2
Hip	centimeter	88	92	96	100	104	108	112	118	124	130
	inch	34.6	36.2	37.8	39.4	40.9	42.5	44.1	46.5	49.6	52.0

PRINTING INSTRUCTIONS

- Tiana's Closet sewing patterns are made in Layered PDF format, which means all sizes are saved in one file and can be shown or hidden. It is recommended to use Adobe Acrobat Reader (paid version on Mac OS, free on Windows) or Foxit PDF Reader (free, works on Windows only) to read the file correctly. In order to choose the desired size(s), go to Layers tab of your PDF reader, uncheck all boxes except for the desired size(s) and the box Print for all sizes.

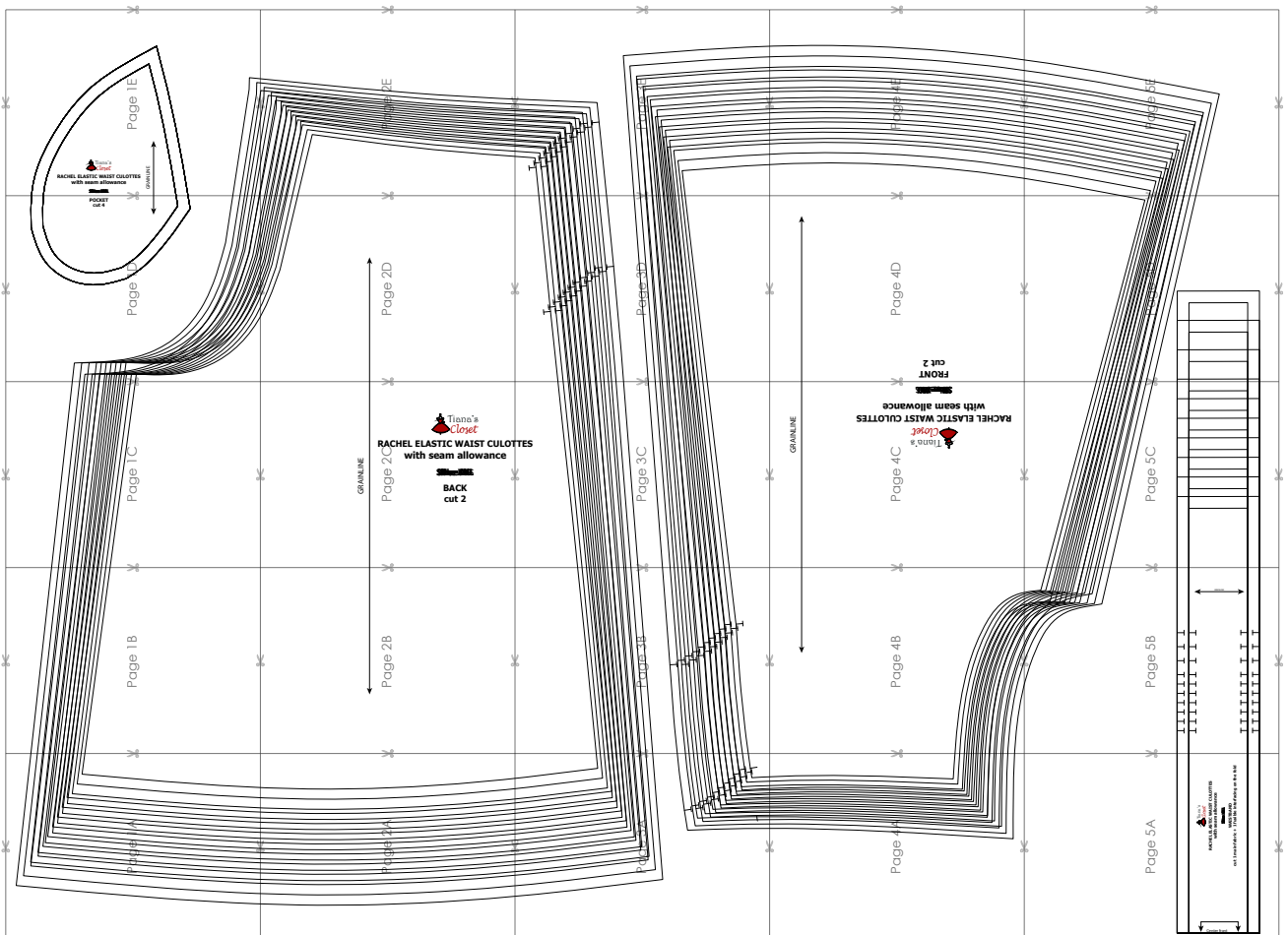
- When printing the pattern, go to Print settings, in the tab Scale choose Custom scale: 100% (or Scaling: None or Actual Size) to print true to size. Note: some computers print smaller than true size even when you choose 100% scale, so you will have to adjust the scale to a little larger than 100% and measure the test square until you get the true size.

- The test square is 10 centimeters (horizontally) and 4 inches (vertically).

- Always print the first page of the file and measure to avoid waste of paper.

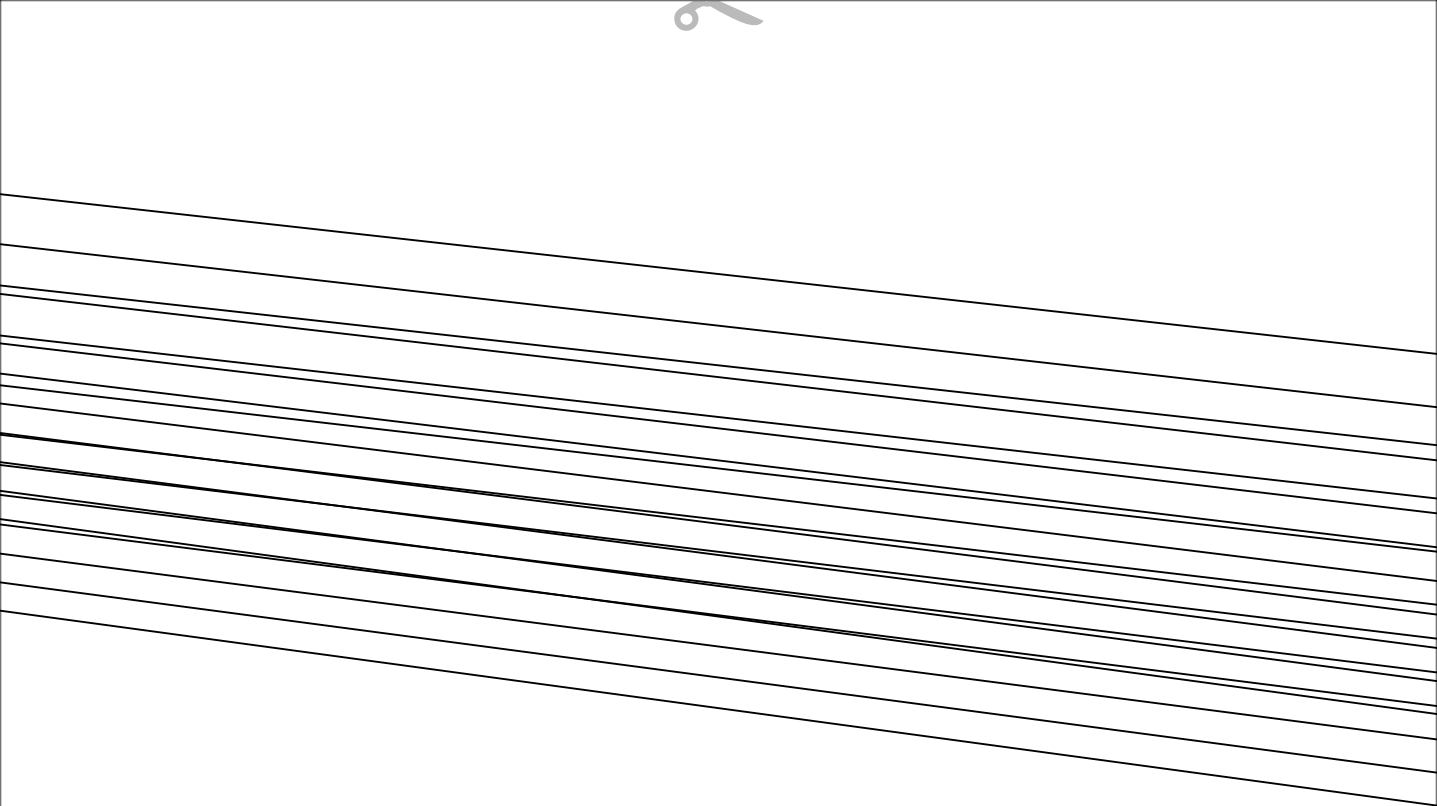
- After printing the pattern, cut the pages along the lines with scissors icon, align and tape the pages according to their sequences. For example, page 1A is taped to page 1B in a row, and page 1A is taped to page 2A in a column. Please see the image below to see how the pages line up.

- You can find photo instruction for printing sewing patterns on Tiana's Closet website: <https://tianas closet.com/index.php/how-to-print-tianas-closet-patterns/>



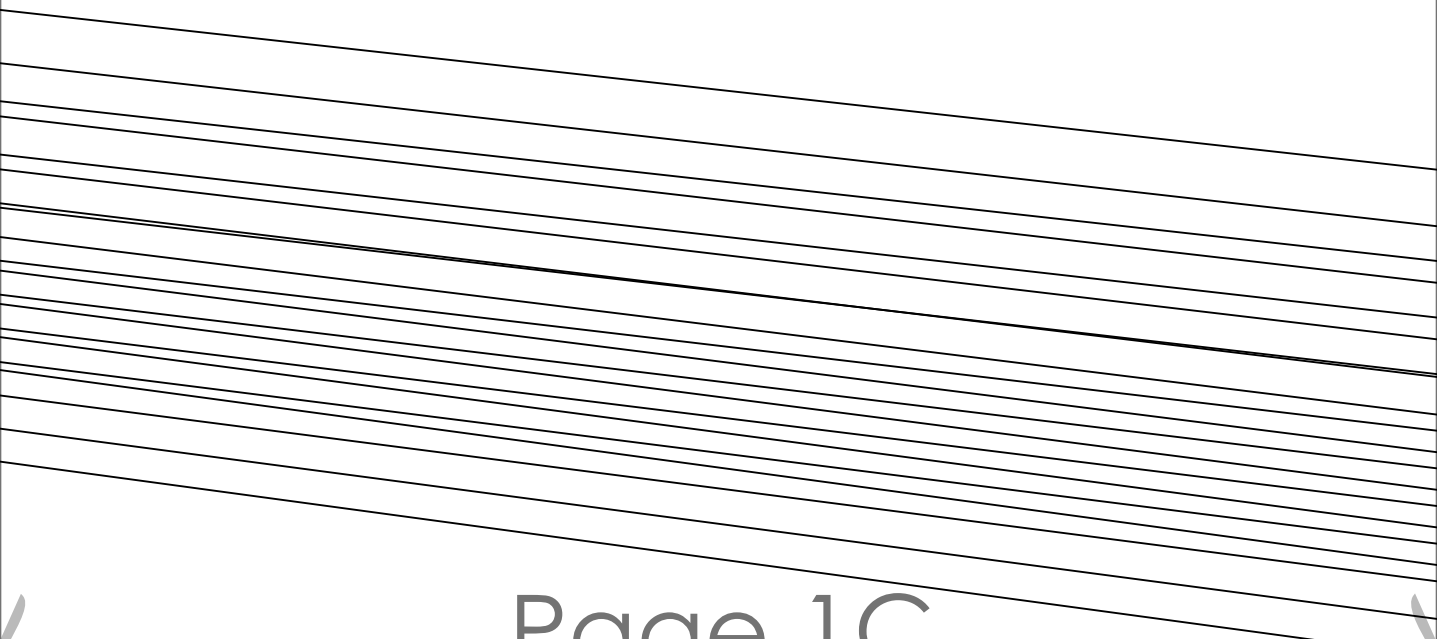
For more ideas and free sewing patterns, visit <http://tianas closet.com>

Page 1A

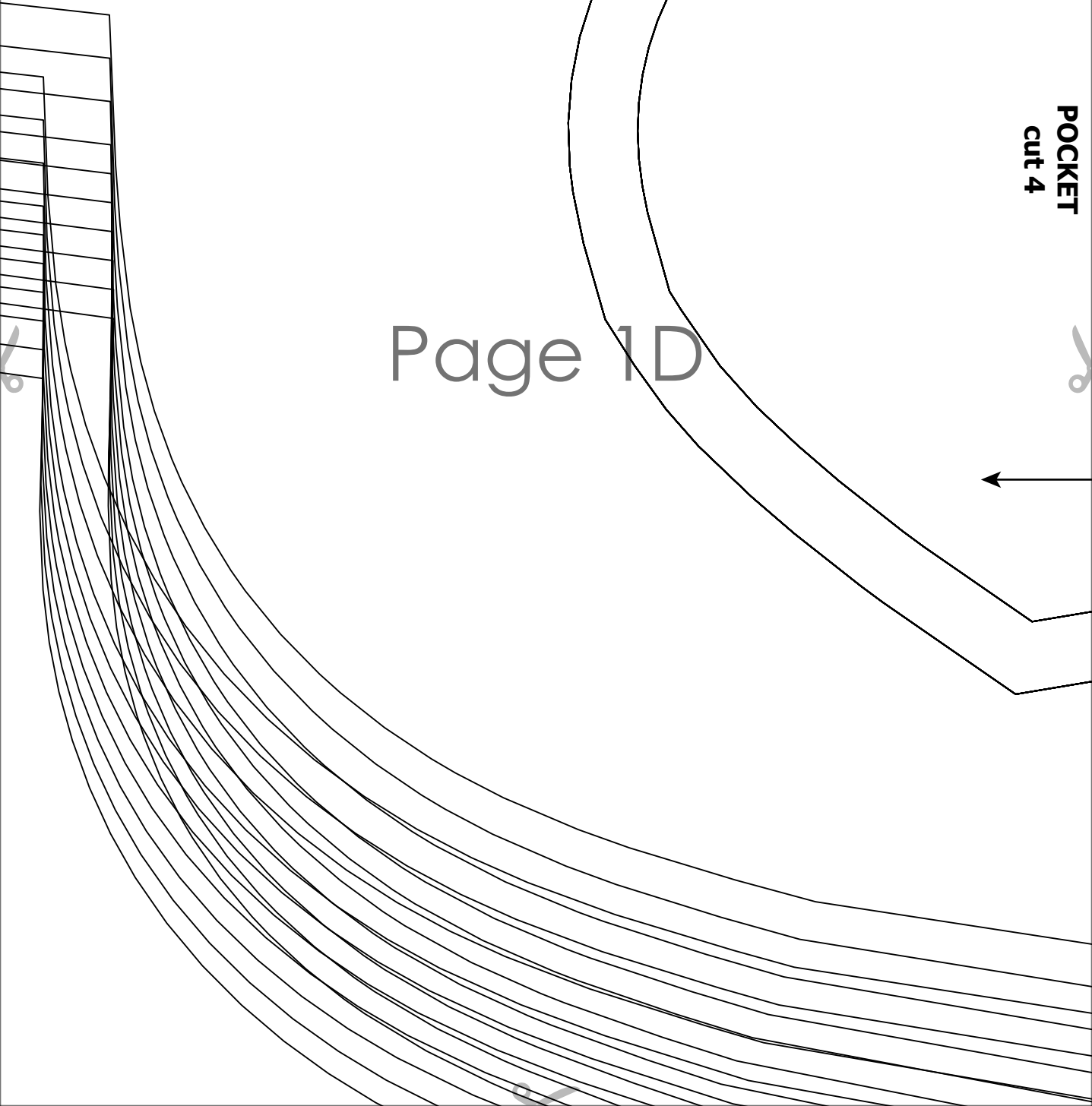


Page 1B





Page 1C



**POCKET
cut 4**

Page 1D

Page 1E



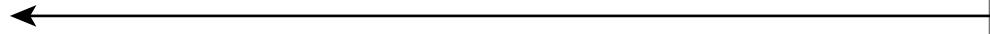
RACHEL ELASTIC WAIST CULOTTES
with seam allowance

Size: XS

GRAINLINE



Page 2A



Page 2B



RACHEL ELASTIC WAIST CULOT
with seam allowance

Page 20

GRAINLINE

~~SEAMS~~

BACK
cut 2



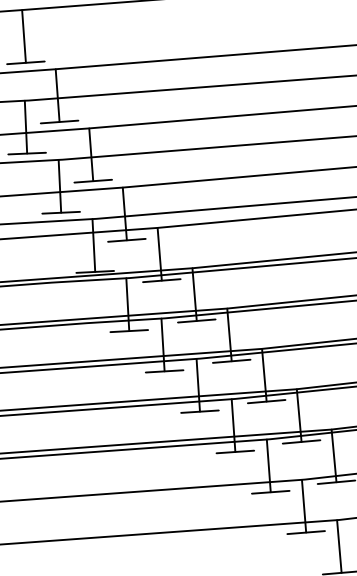
Page 2D

The image shows a stack of papers, with the top page being a white sheet. On the left side of this page, there is a large, empty white rectangular area. The rest of the page is white. The text 'Page 2E' is centered on the page. There are small, faint icons of scissors at the corners of the page, suggesting it is a template for a page to be cut out.

Page 2E

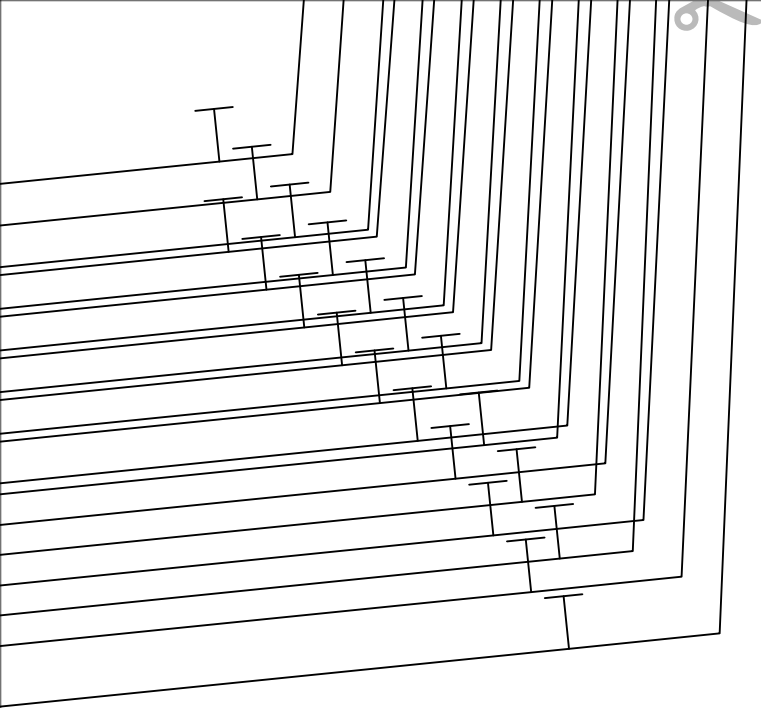
Page 3A

Page 3B

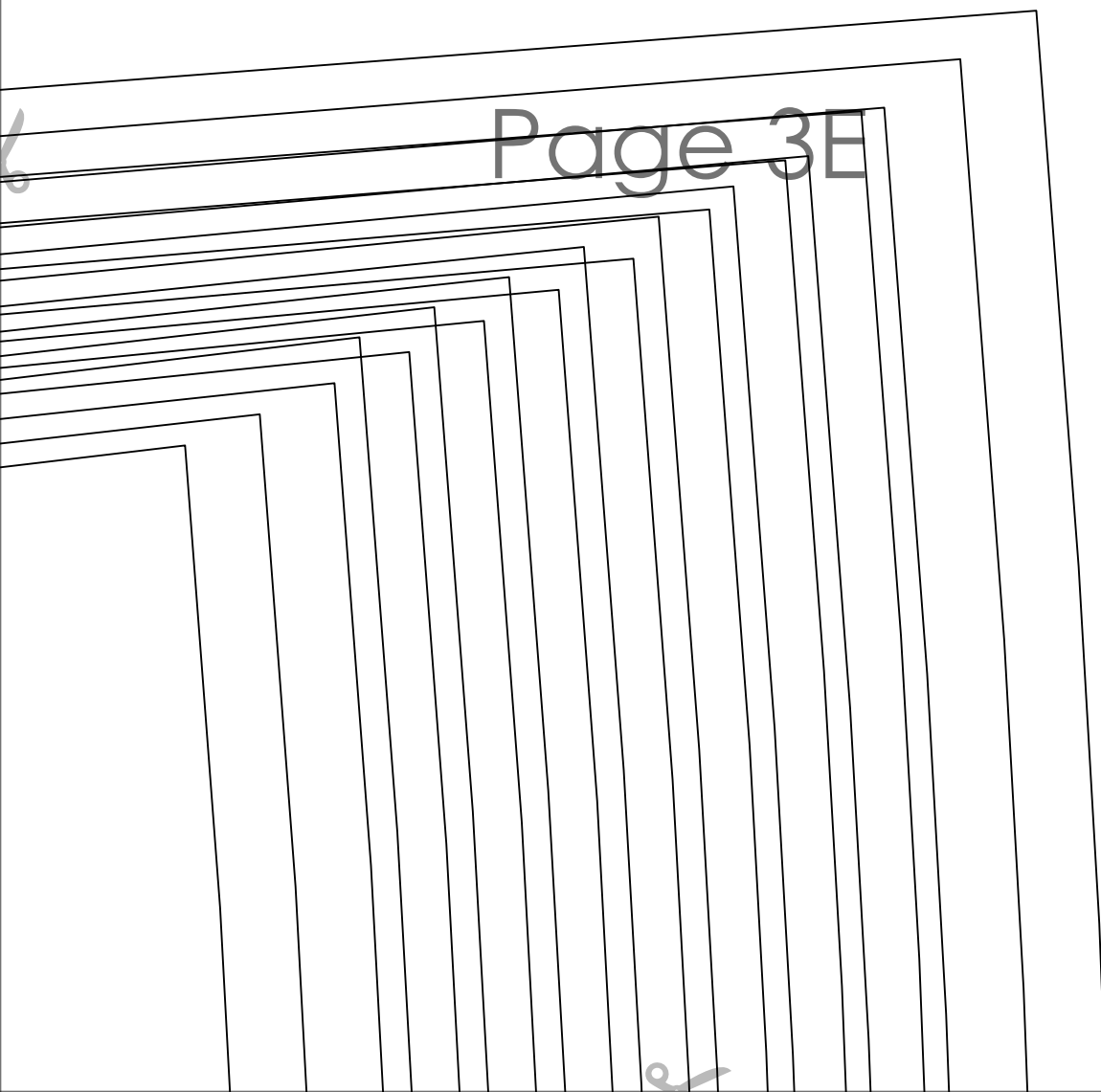


Page 3C

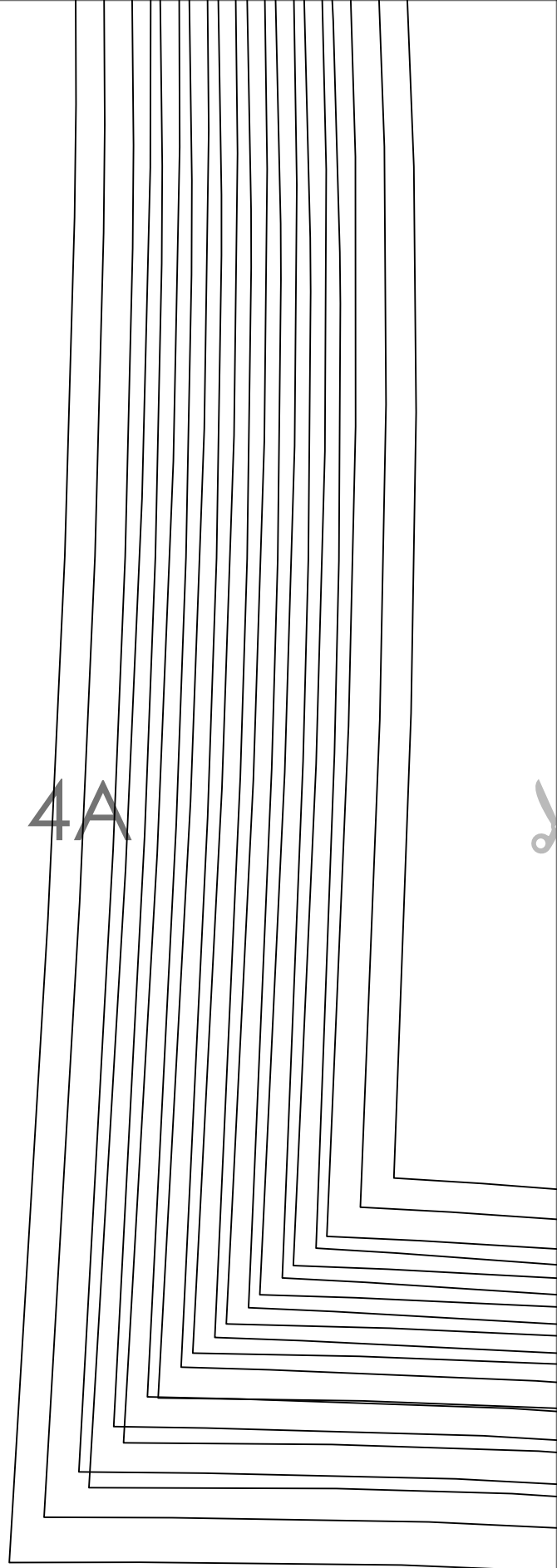
Page 3D

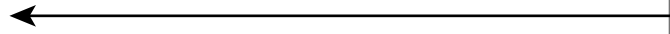


Page 3E

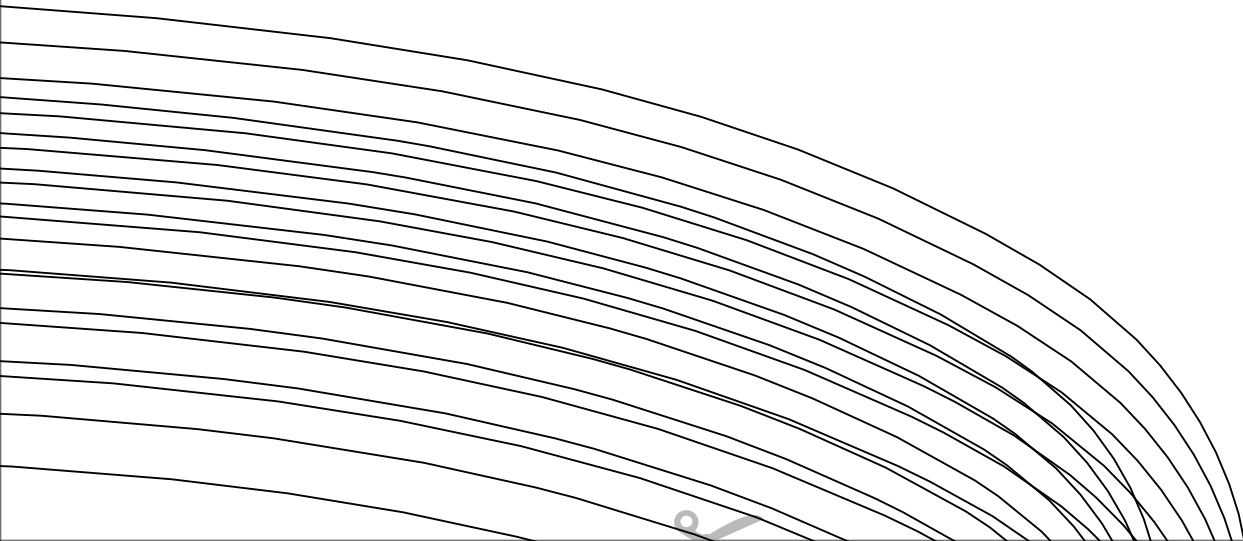


Page 4A





Page 4B



Page 4C



RACHEL ELASTIC WAIST CULOTTES
with seam allowance

SWIIZERS

Page 4D

FRONT
cut 2



Page 4E

Page 5A

Center front



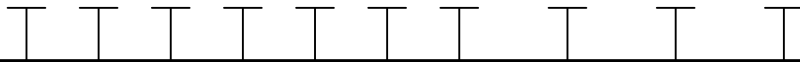
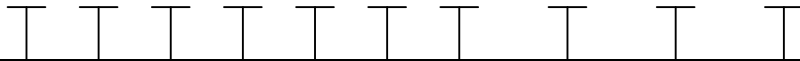
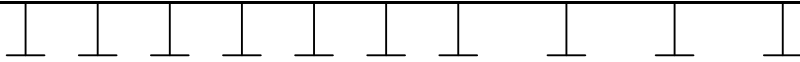
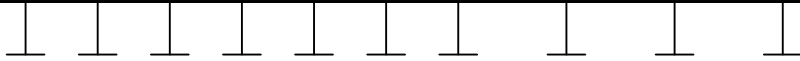
**RACHEL ELASTIC WAIST CULOTTES
with seam allowance**

~~Size 22E~~

WAISTBAND

cut 1 main fabric + 1 fusible interfacing on the fold

Page 5B



Page 5D

Page 5E