

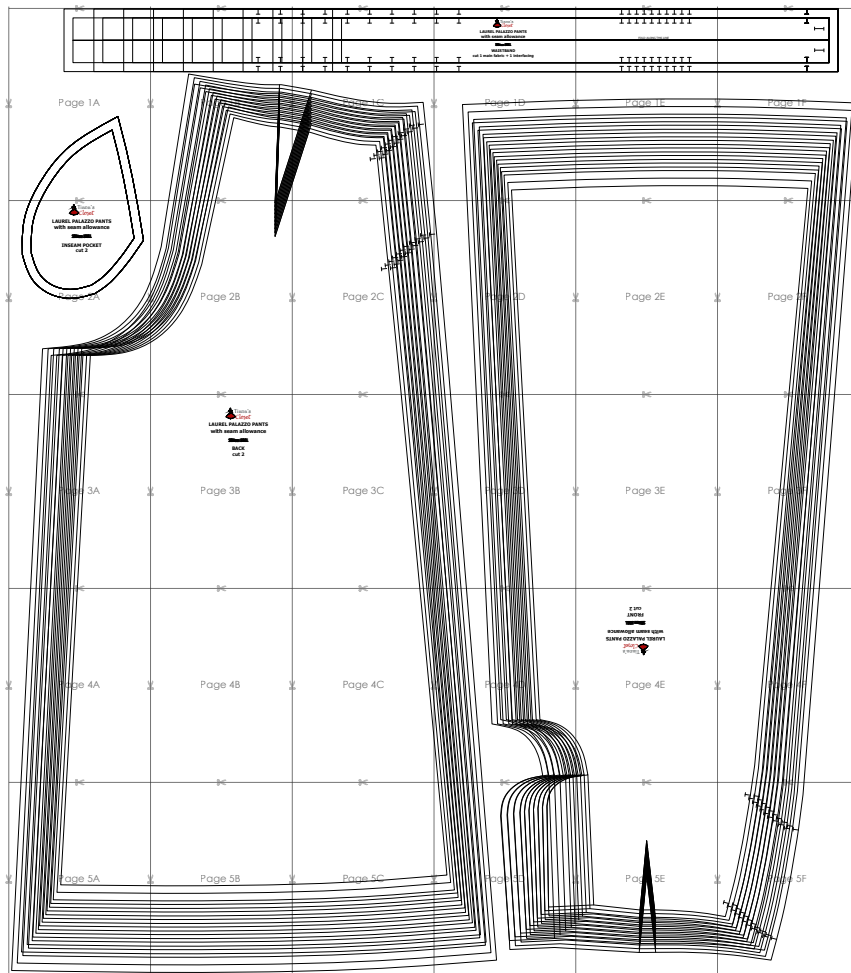
## SIZE TABLE

### TIANA'S CLOSET SEWING PATTERNS

Size code		XXS	XS	S	M	L	XL	XXL	3XL	4XL	5XL
Bust	centimeter	80	84	88	92	96	100	104	110	116	122
	inch	31.5	33.1	34.6	36.2	37.8	39.4	40.9	43.3	45.7	47.2
Waist	centimeter	60	64	68	72	76	80	84	90	96	102
	inch	23.6	25.2	26.8	28.3	29.9	31.5	33.1	35.4	37.8	40.2
Hip	centimeter	88	92	96	100	104	108	112	118	124	130
	inch	34.6	36.2	37.8	39.4	40.9	42.5	44.1	46.5	49.6	52.0

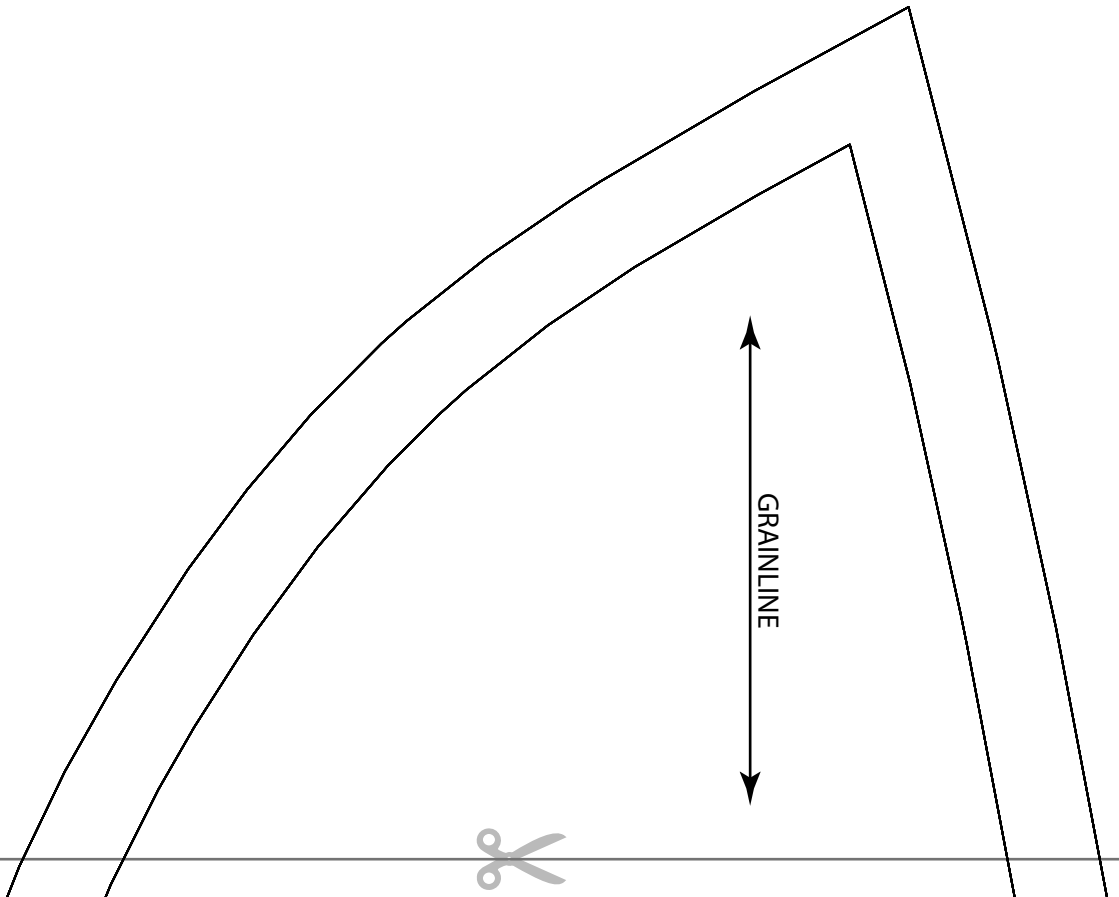
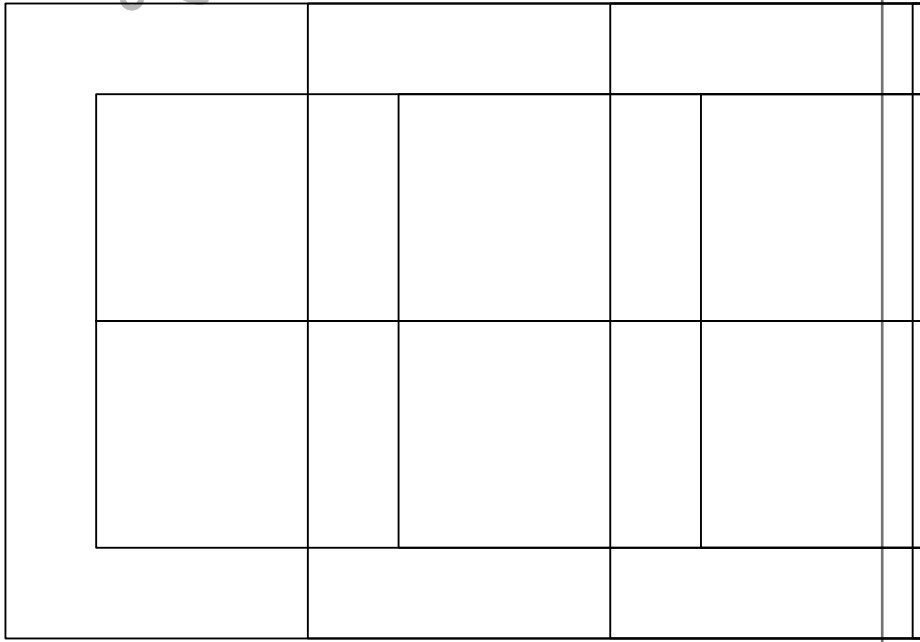
## PRINTING INSTRUCTIONS

- Tiana's Closet sewing patterns are made in Layered PDF format, which means all sizes are saved in one file and can be shown or hidden. It is recommended to use Adobe Acrobat Reader (paid version on Mac OS, free on Windows) or Foxit PDF Reader (free, works on Windows only) to read the file correctly. In order to choose the desired size(s), go to Layers tab of your PDF reader, uncheck all boxes except for the desired size(s) and the box Print for all sizes.
- When printing the pattern, go to Print settings, in the tab Scale choose Custom scale: 100% (or Scaling: None or Actual Size) to print true to size. Note: some computers print smaller than true size even when you choose 100% scale, so you will have to adjust the scale to a little larger than 100% and measure the test square until you get the true size.
- The test square is 10 centimeters (horizontally) and 4 inches (vertically).
- Always print the first page of the file and measure to avoid waste of paper.
- After printing the pattern, cut the pages along the lines with scissors icon, align and tape the pages according to their sequences. For example, page 1A is taped to page 1B in a row, and page 1A is taped to page 2A in a column. Please see the image below to see how the pages line up.
- You can find photo instruction for printing sewing patterns on Tiana's Closet website: <https://tianasclot.com/index.php/how-to-print-tianas-closet-patterns/>



For more ideas and free sewing patterns, visit <http://tianasclot.com>

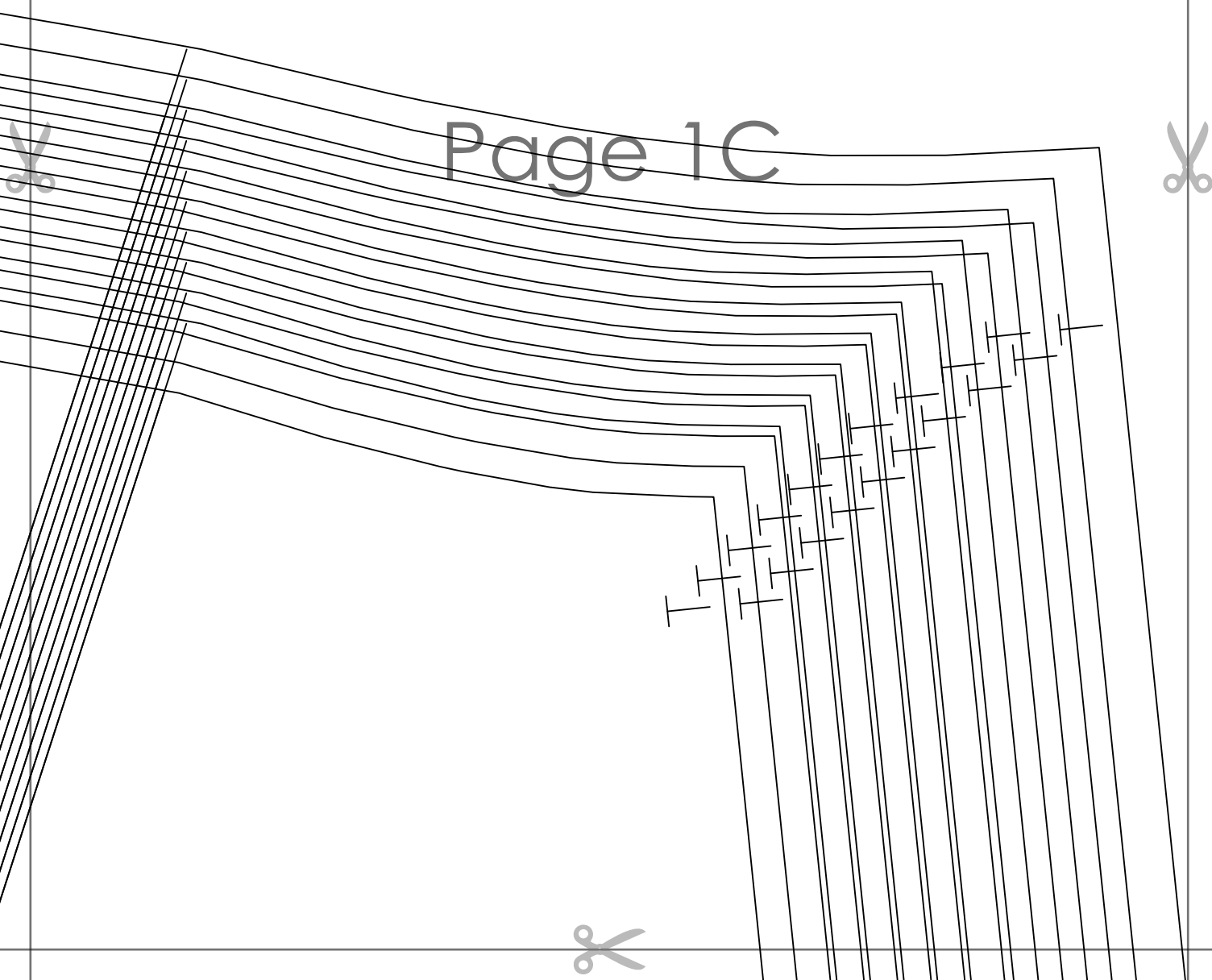
Page 1A








Page 1C





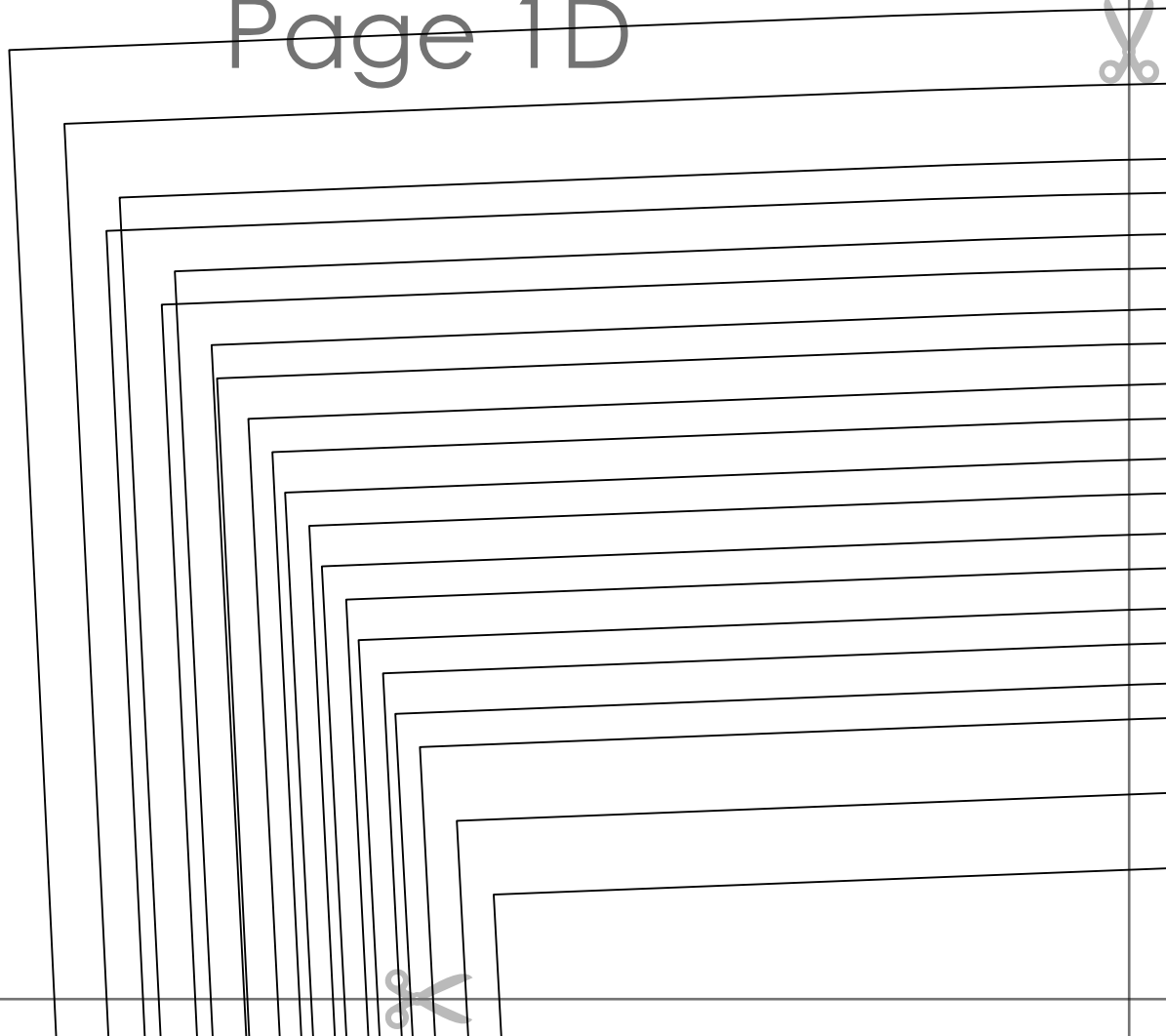
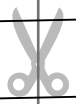
**LAUREL PALAZZO PANTS  
with seam allowance**

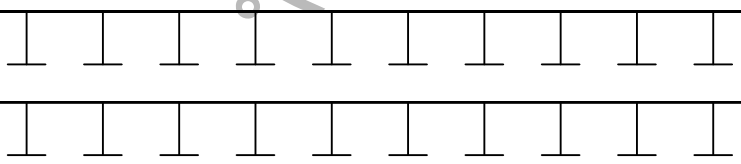
~~Size M~~

**WAISTBAND  
cut 1 main fabric + 1 interfacing**

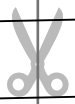
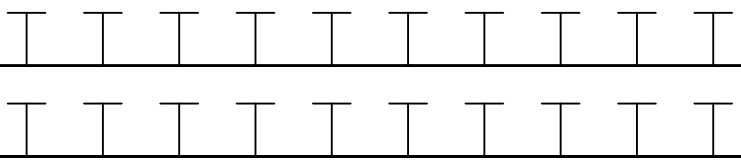


Page 1D





FOLD ALONG THIS LINE

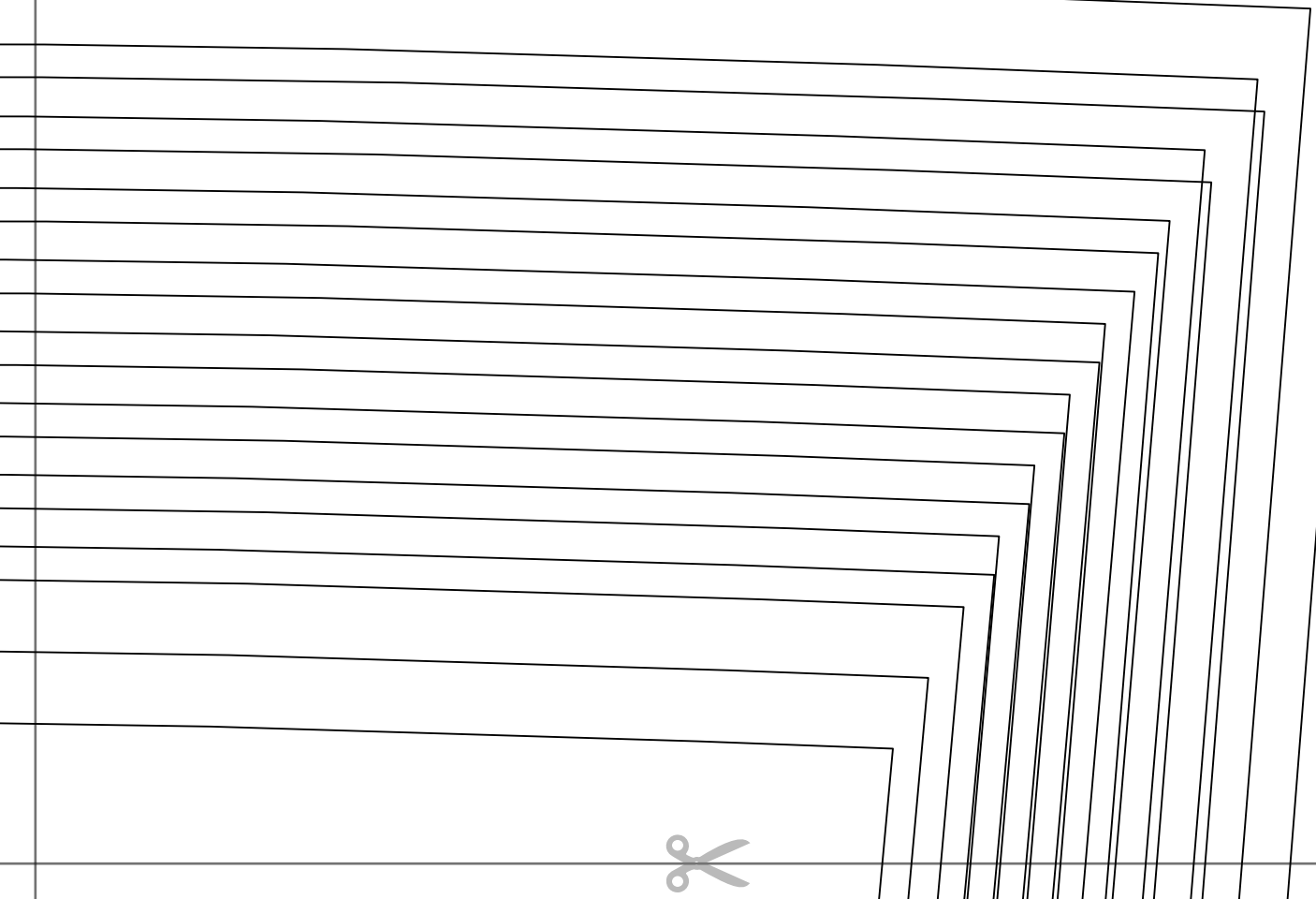


Page 1E





Page 1F



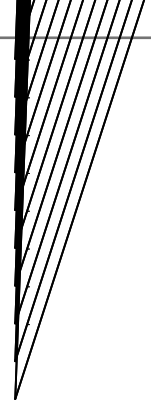
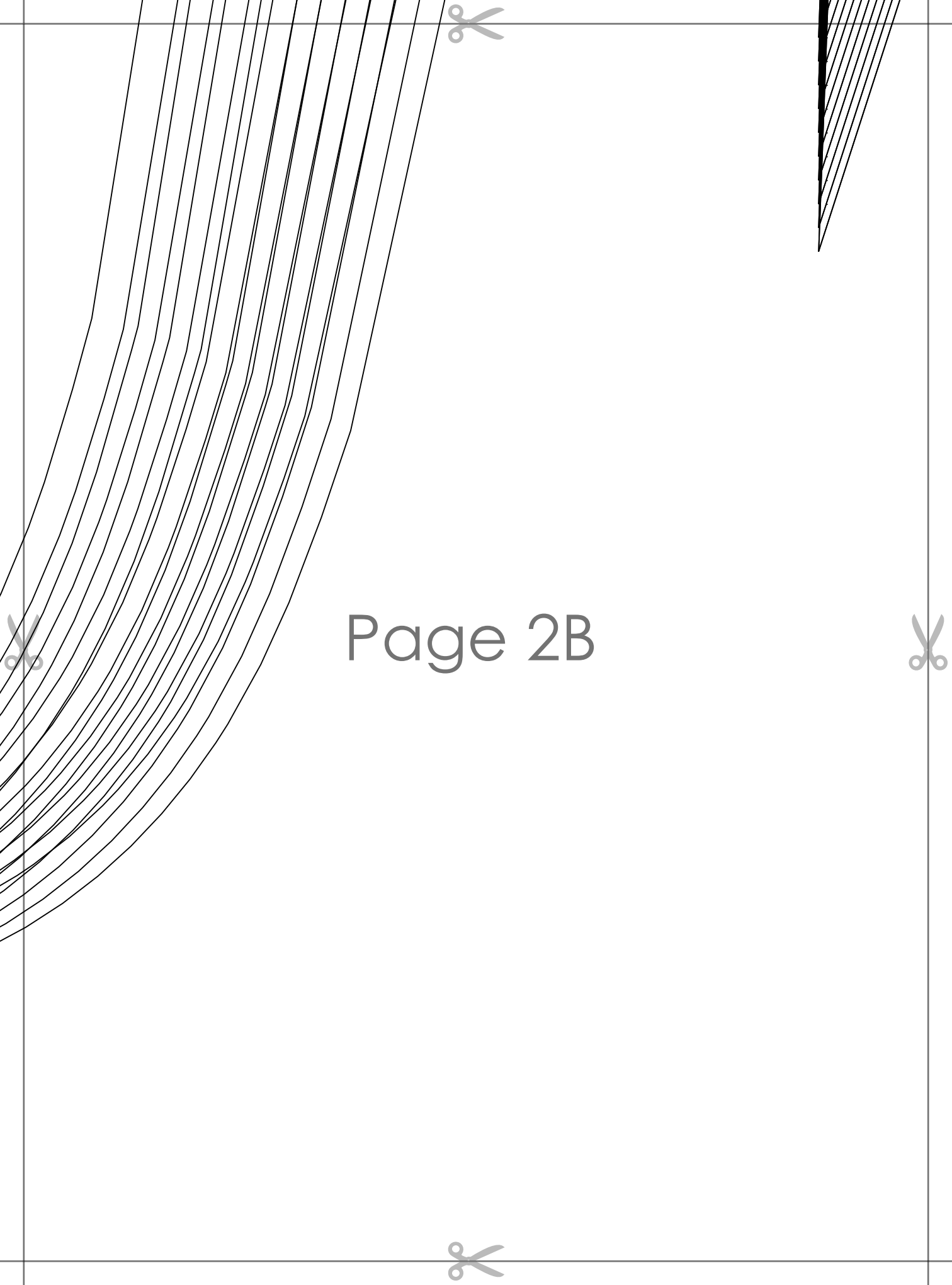


**LAUREL PALAZZO PANTS  
with seam allowance**

~~Size 20~~

**INSEAM POCKET  
cut 2**

Page 2A

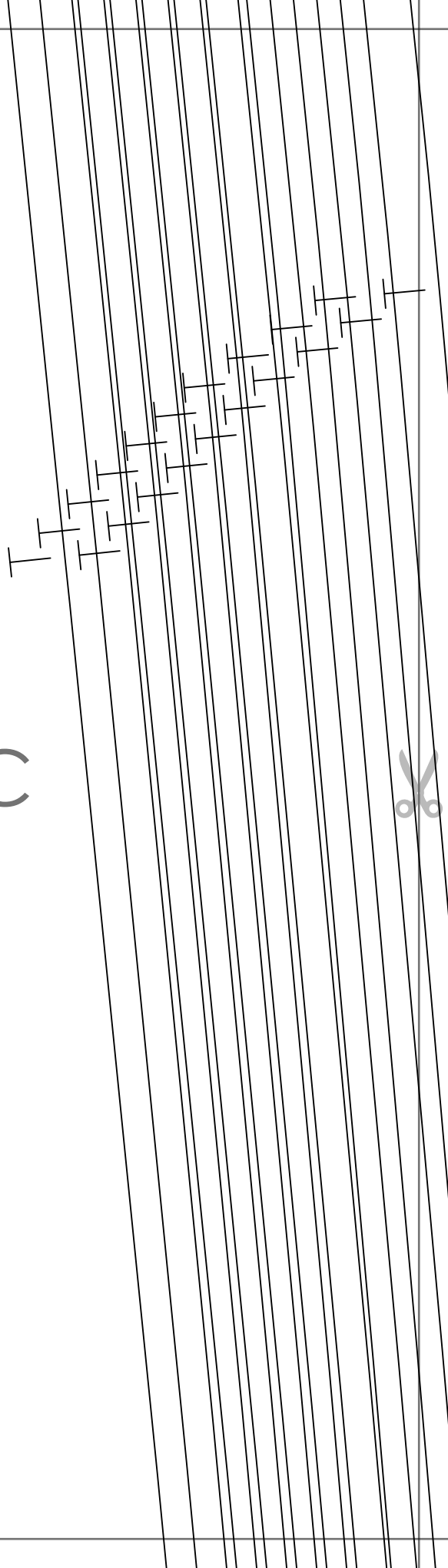


Page 2B





Page 2C





Page 2D



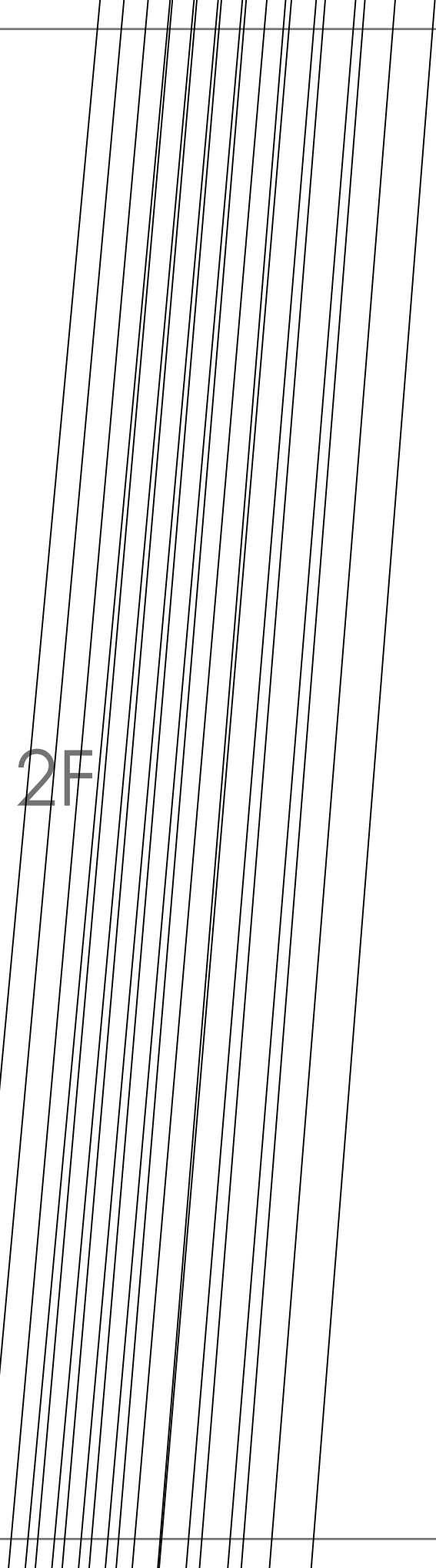


Page 2E





Page 2F





Page 3A





**LAUREL PALAZZO PANTS  
with seam allowance**

**~~Size: M~~**

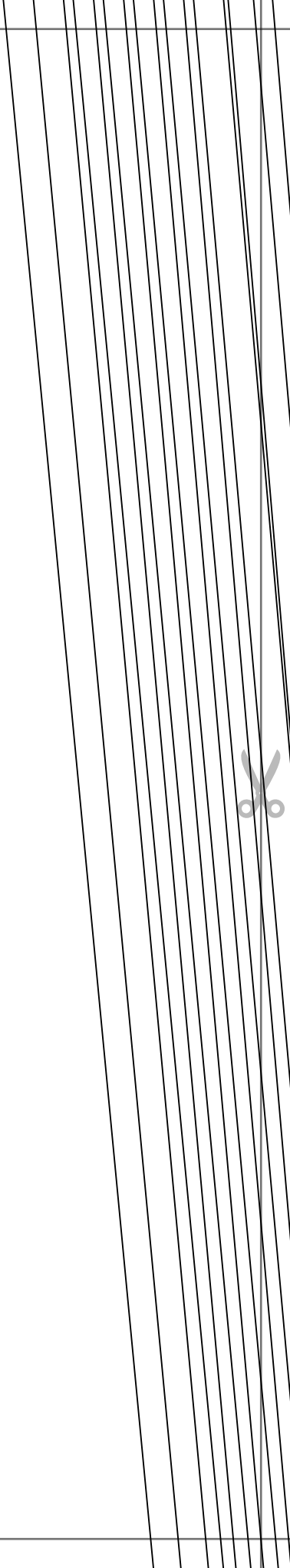
**BACK  
cut 2**

Page 3B



GRAINLINE

Page 3C





Page 3D



GRAINLINE

Page 3E





Page 3F





Page 4A





Page 4B





Page 4C





Page 4D





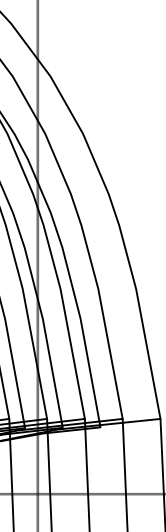
**FRONT**  
**cut 2**

~~STREETS~~

**LAUREL PALAZZO PANTS**  
**with seam allowance**



Page 4E





Page 4F





Page 5A





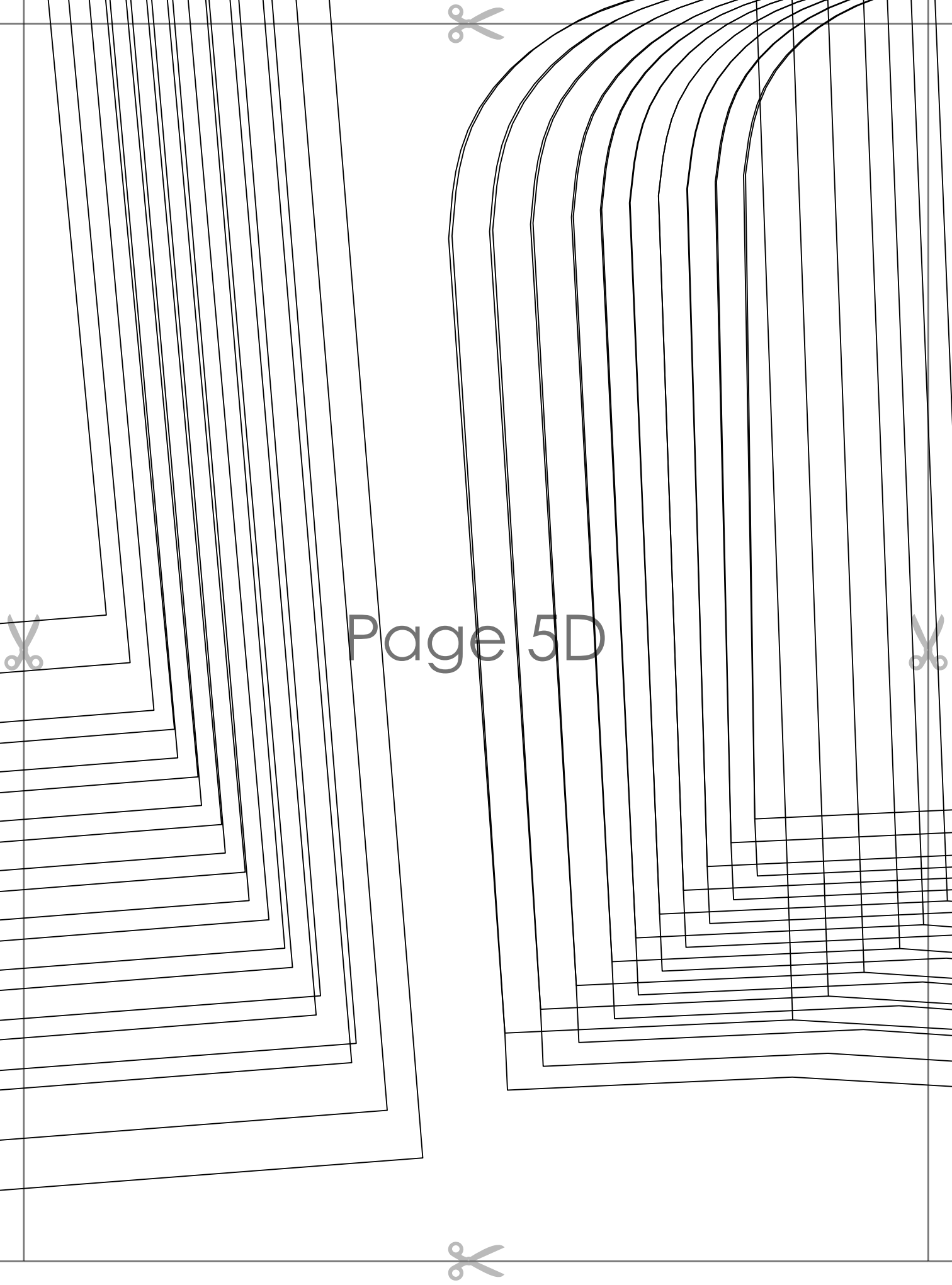
Page 5B





Page 5C

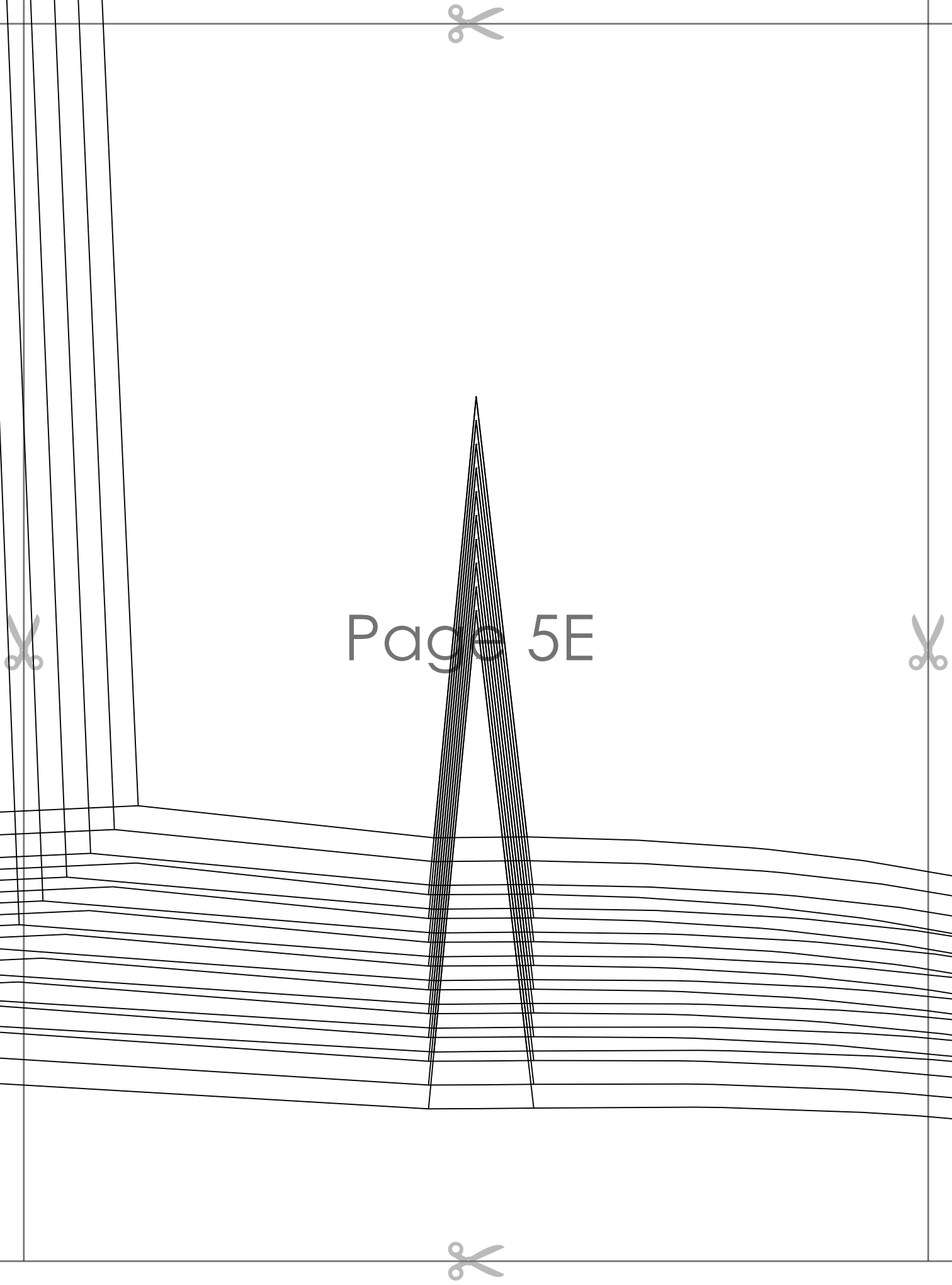


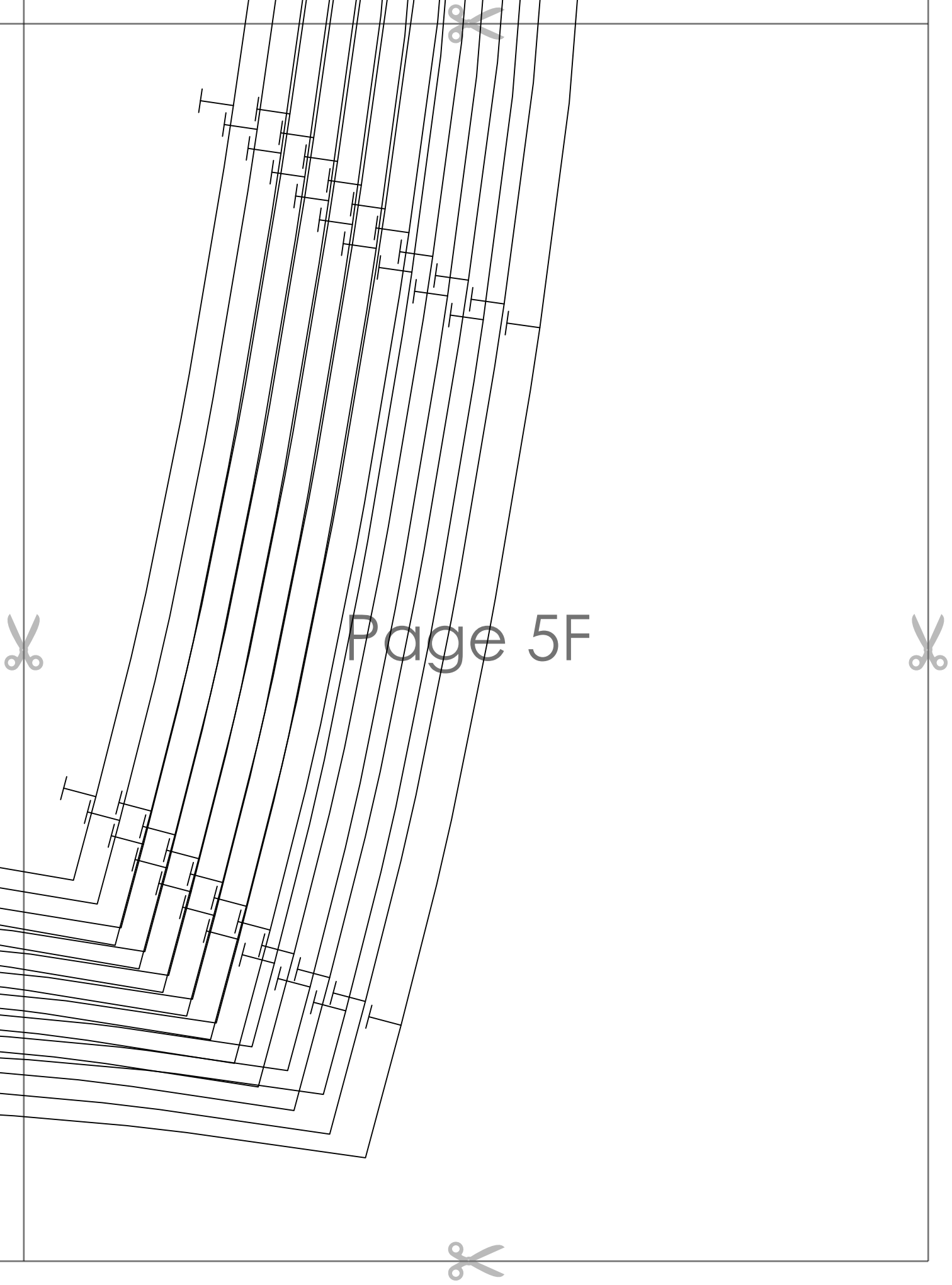


Page 5D



Page 5E





Page 5F