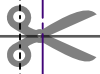
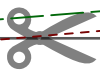


Page 1A



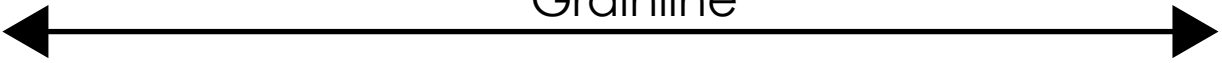


Page 1B





Grainline



Page 1C





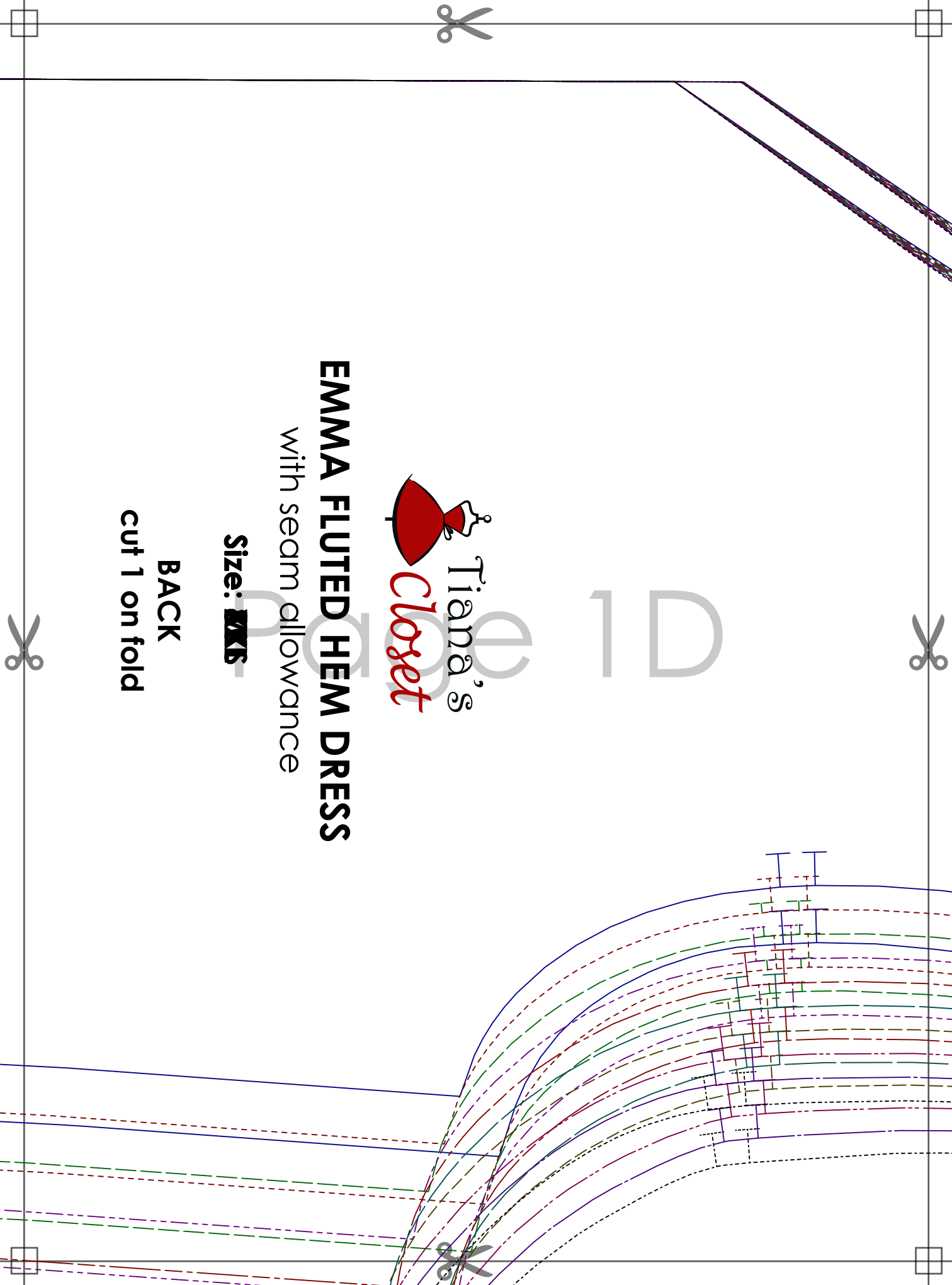
EMMA FLUTED HEM DRESS

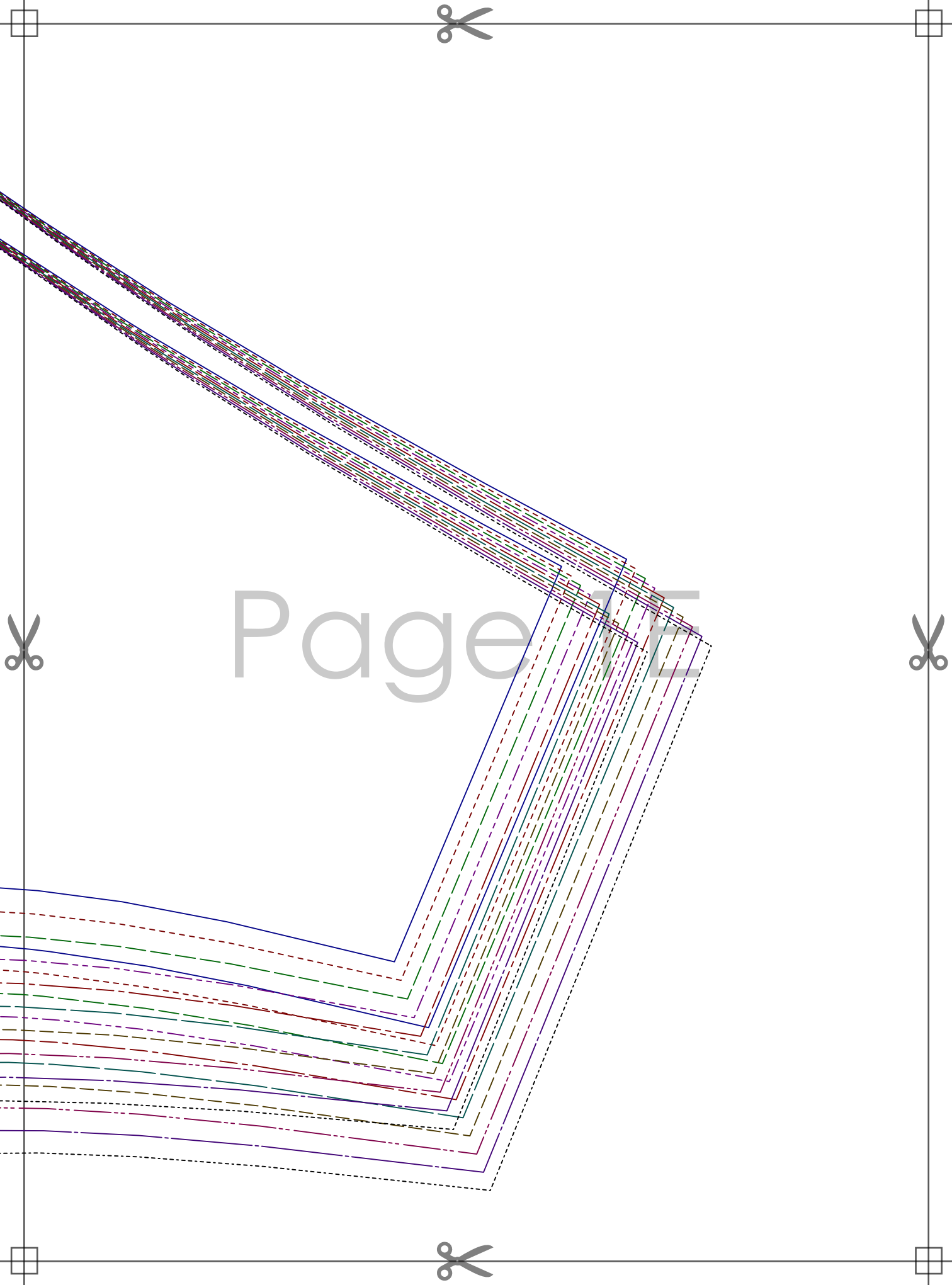
with seam allowance

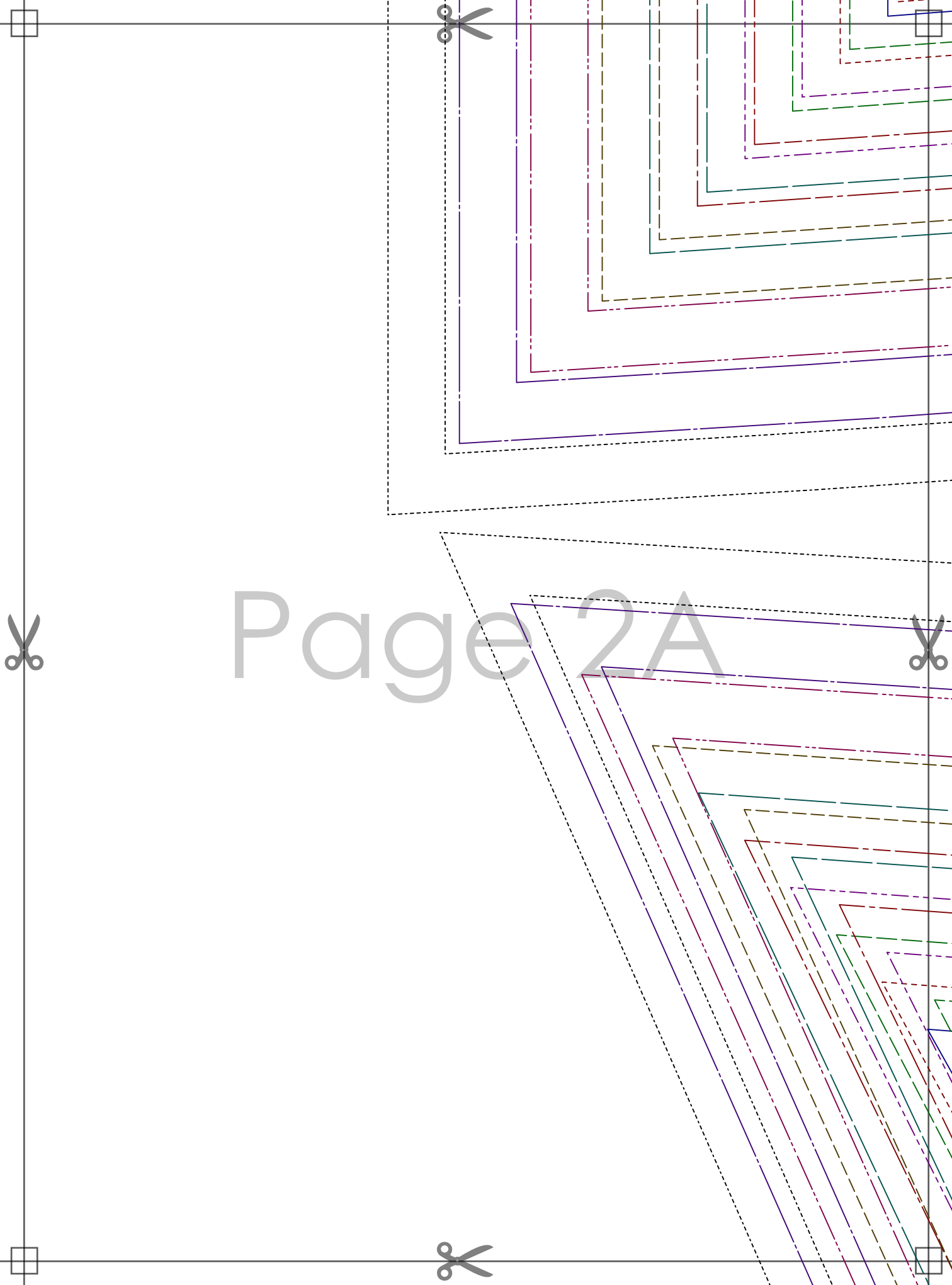
Size: **MKS**

BACK

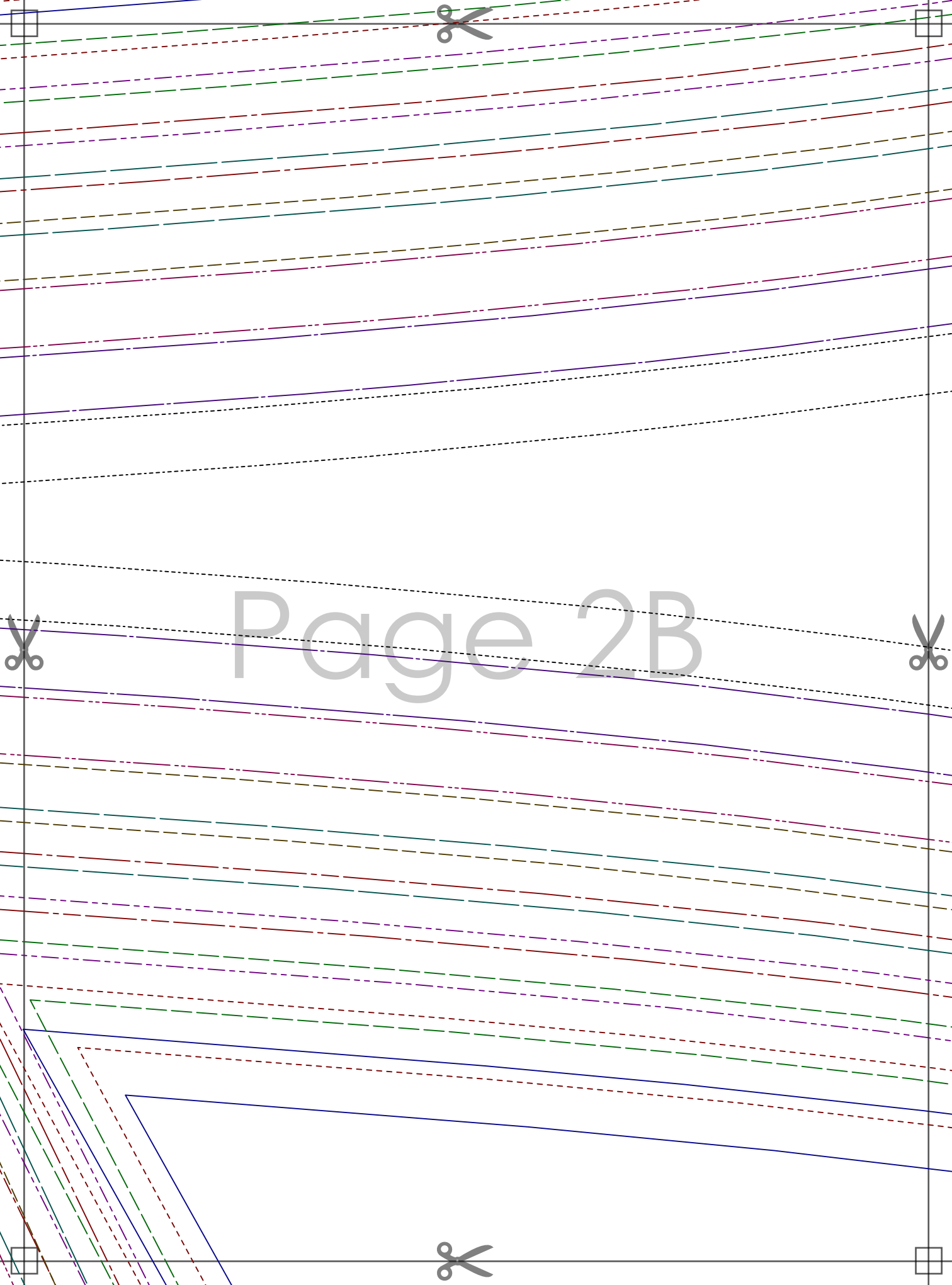
cut 1 on fold



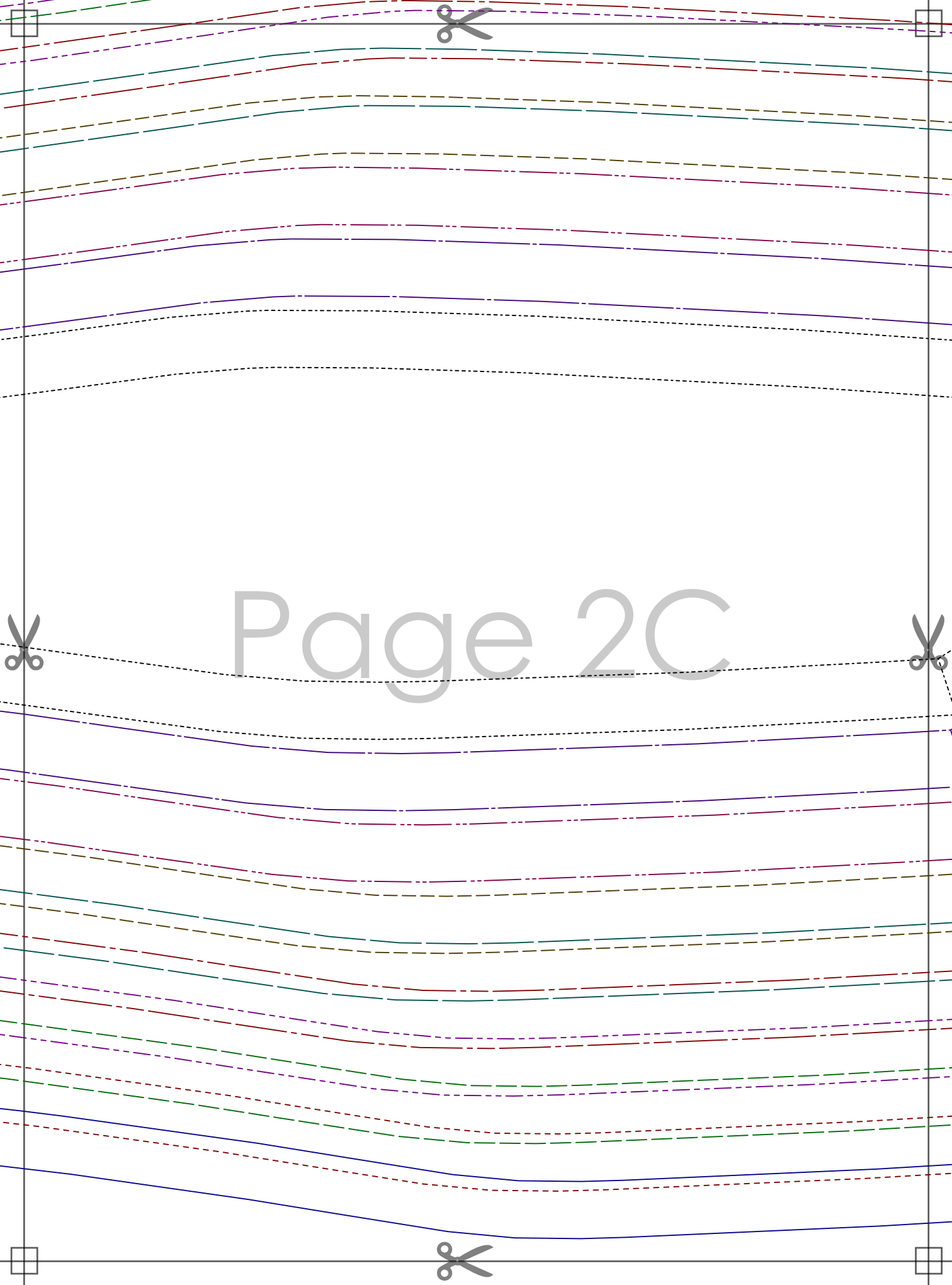




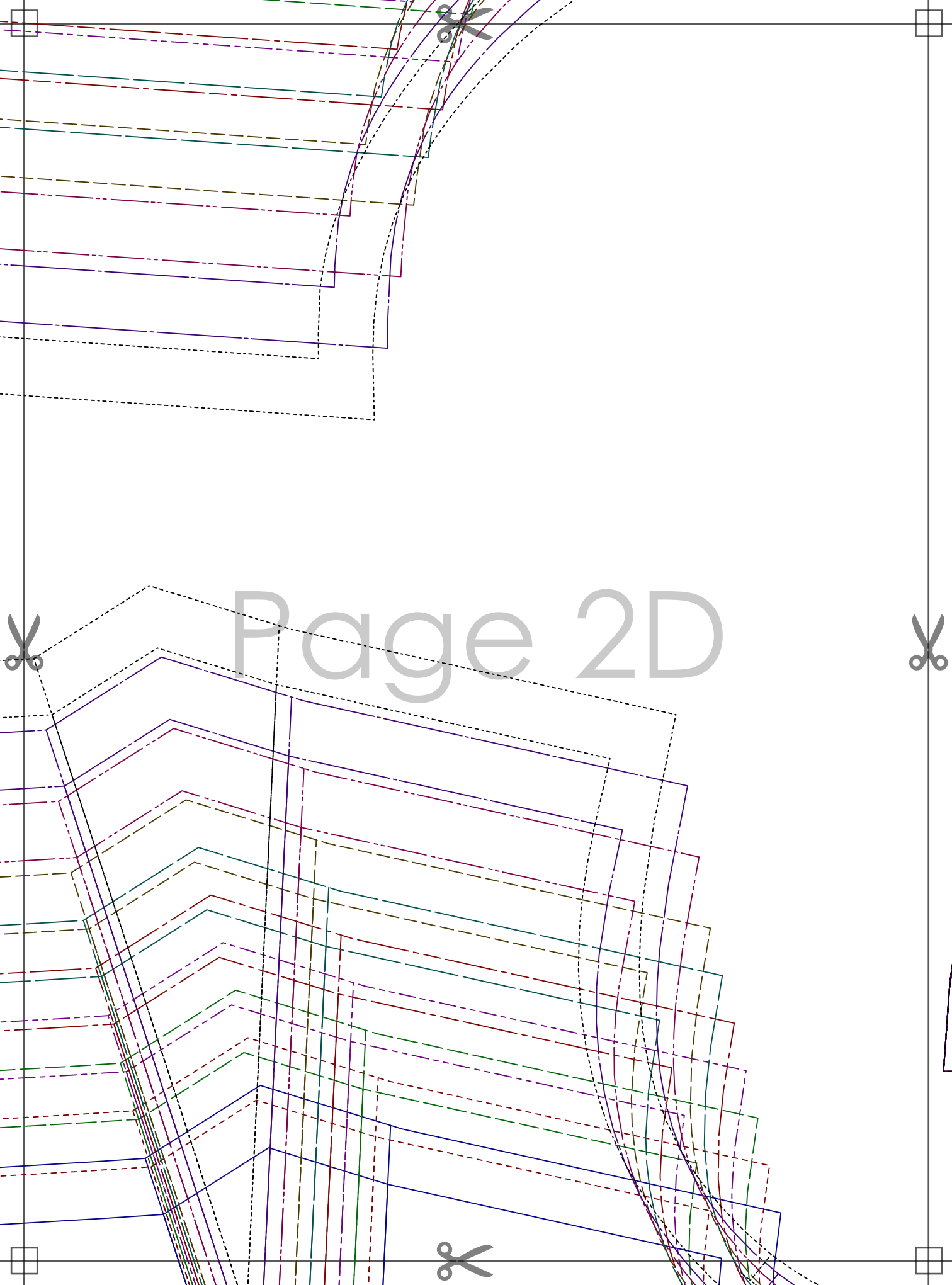
Page 2A



Page 2B



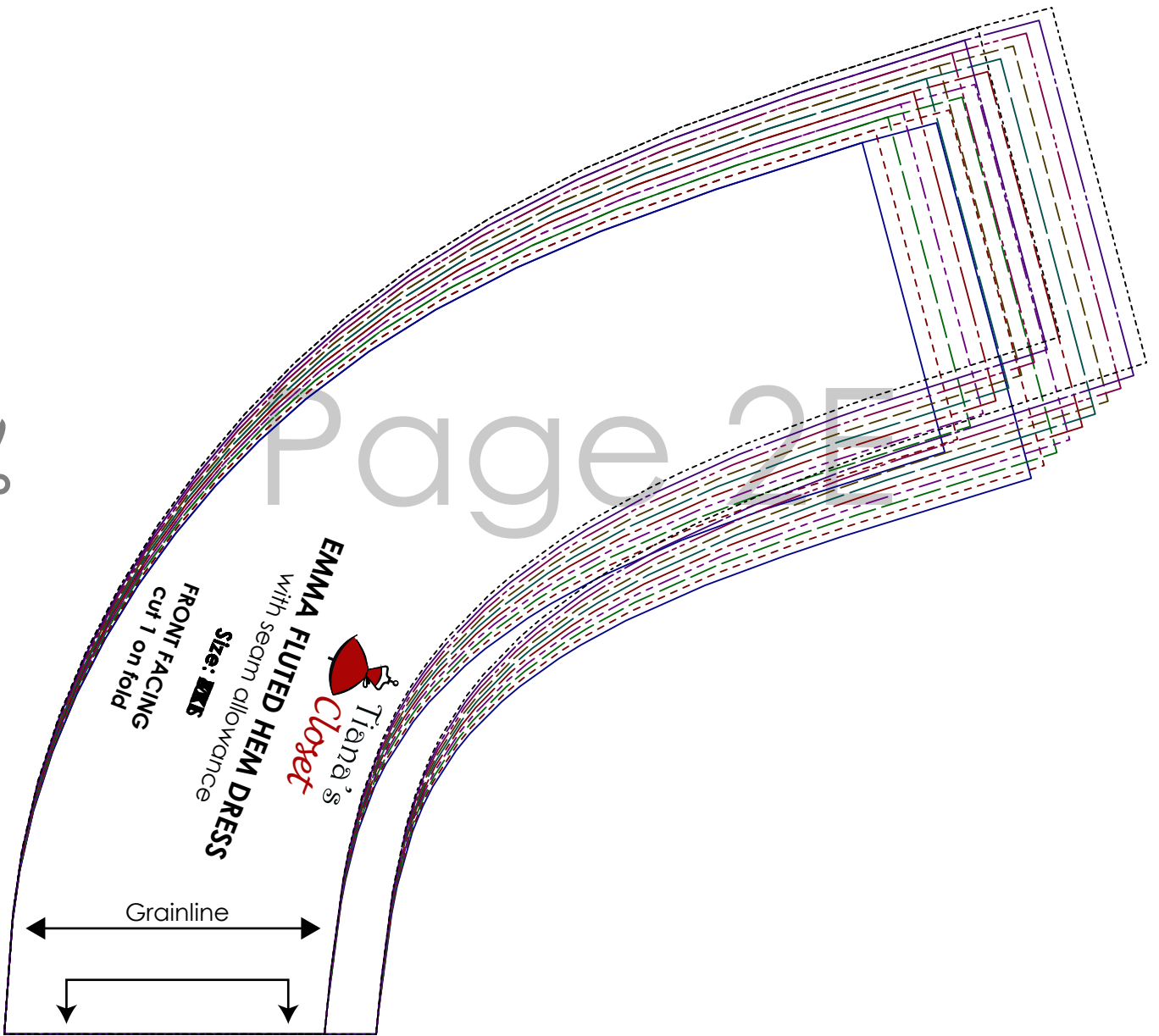
Page 2C



Page 2D



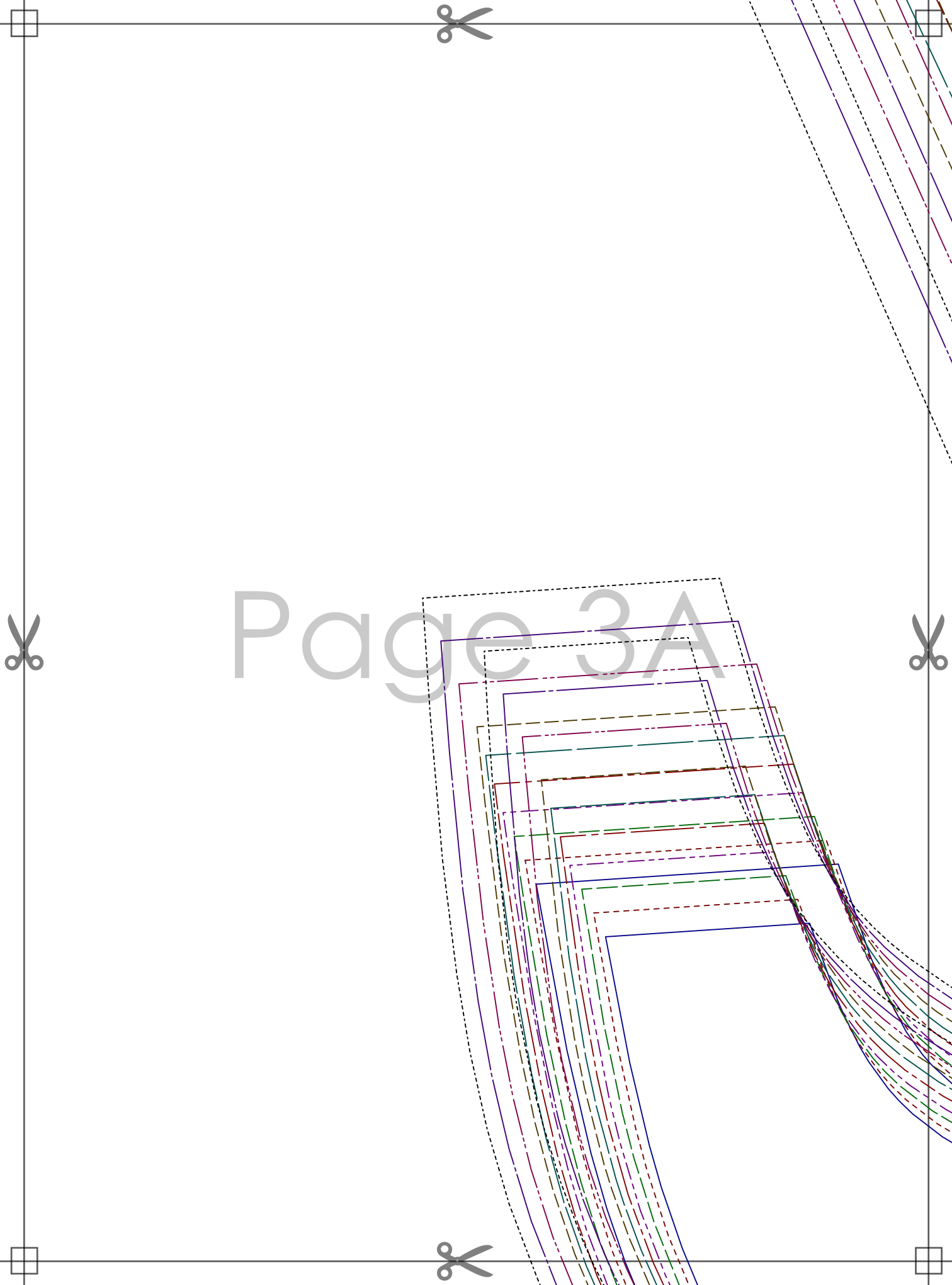
Page 25

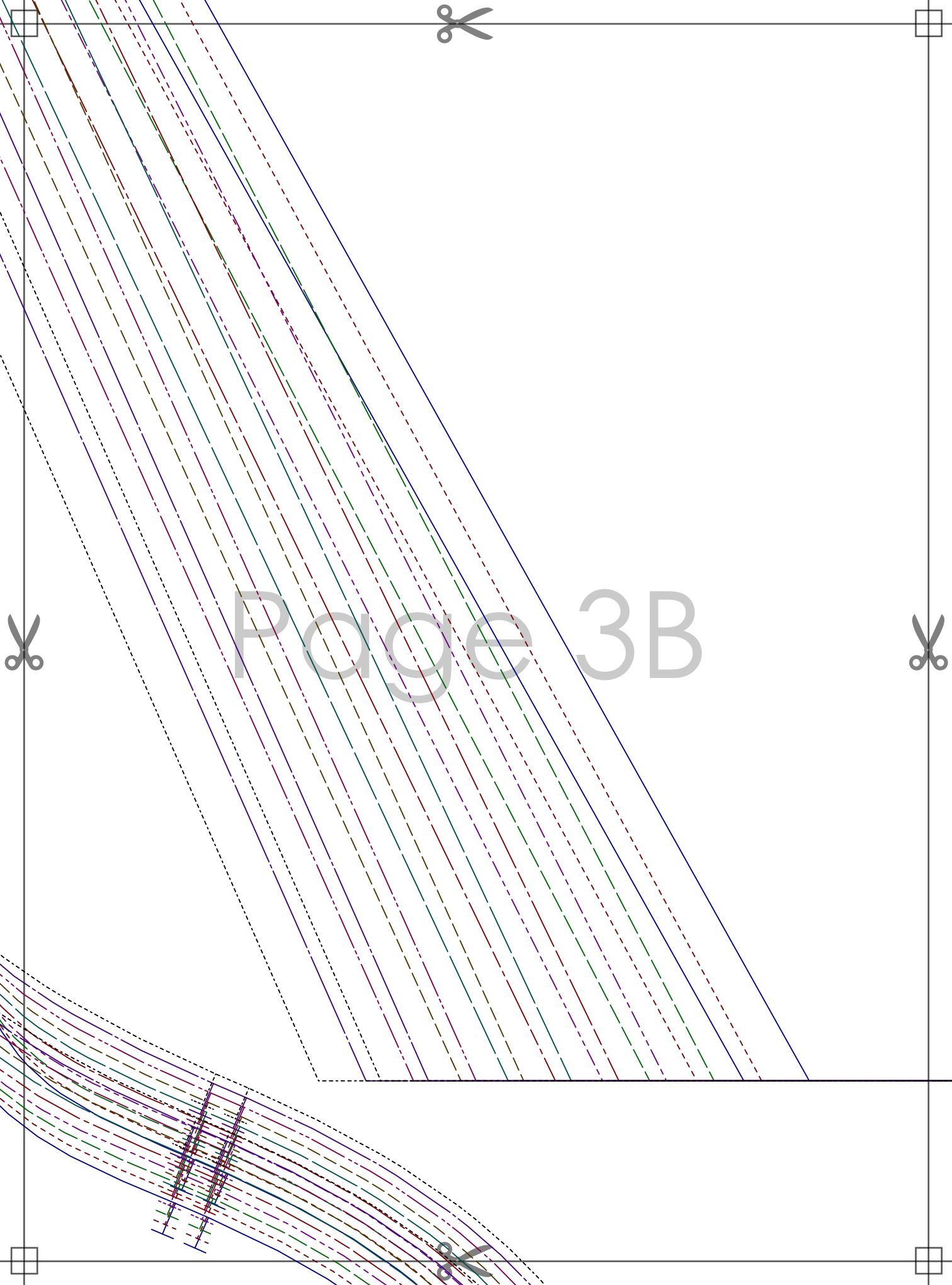


EMMA FLUTED HEM DRESS
 With seam allowance
 Size: 12/16
 FRONT FACING
 cut 1 on fold

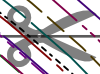


Grainline



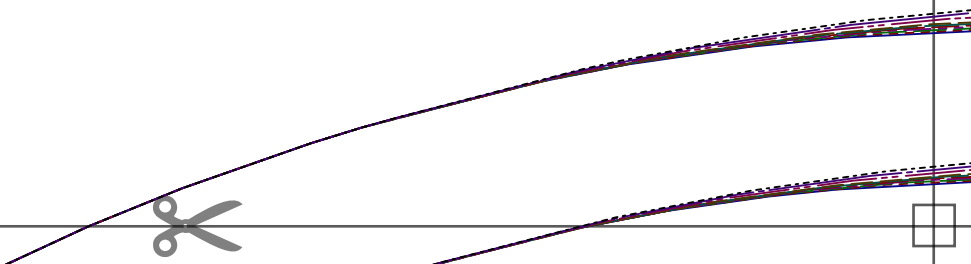


Page 3B



Page 3C

Grainline





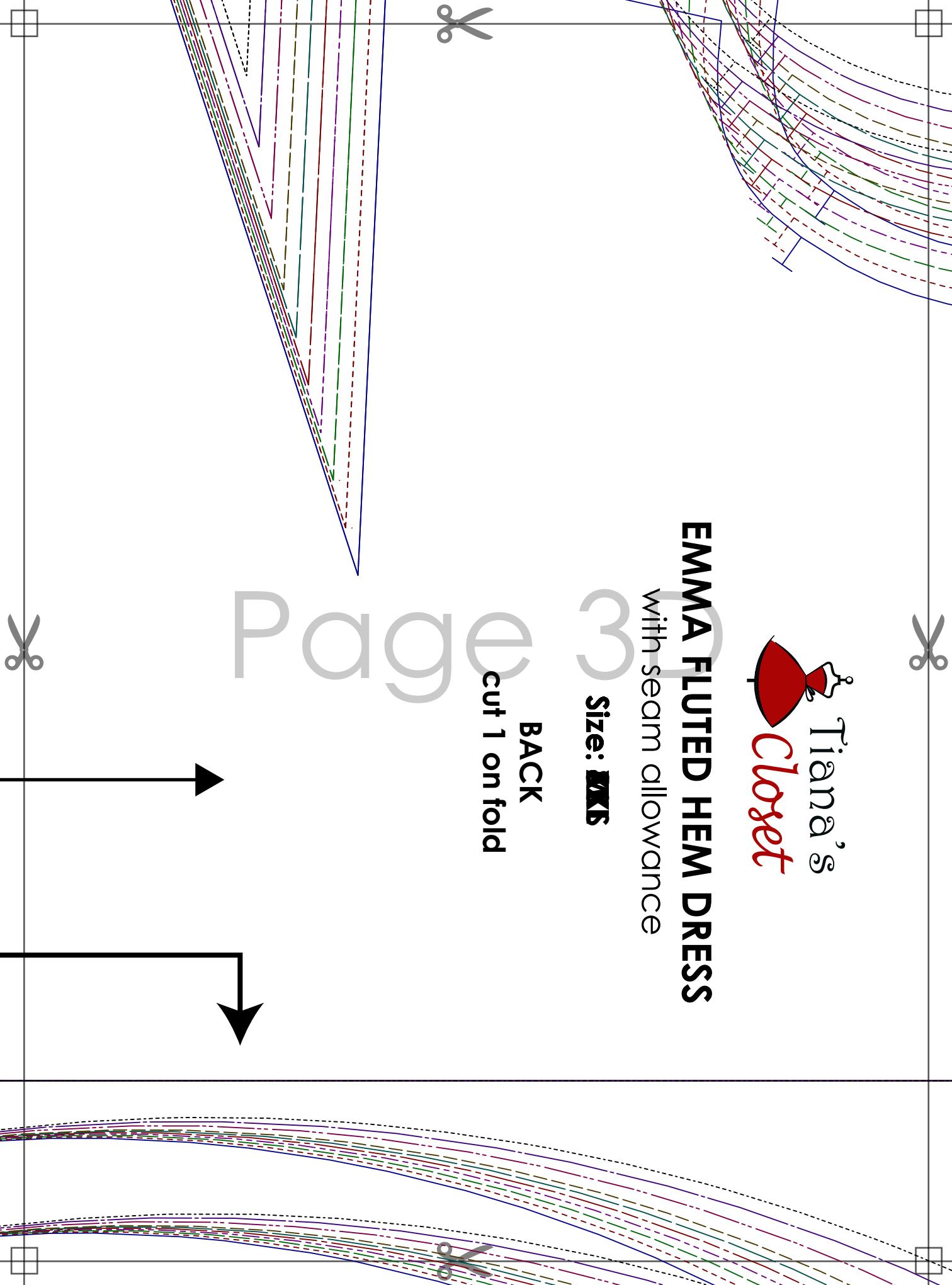
EMMA FLUTED HEM DRESS

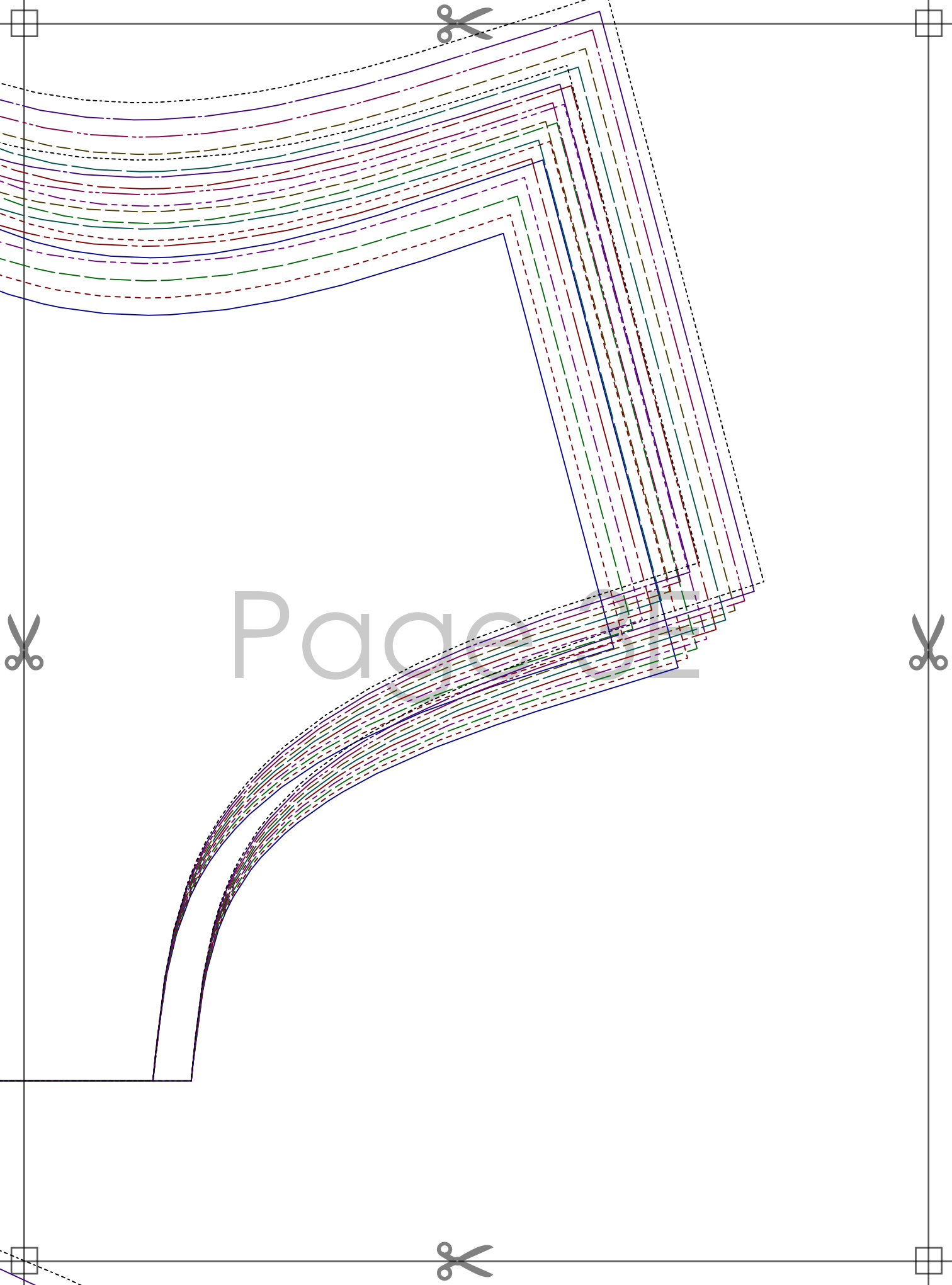
with seam allowance

Size: **MKS**

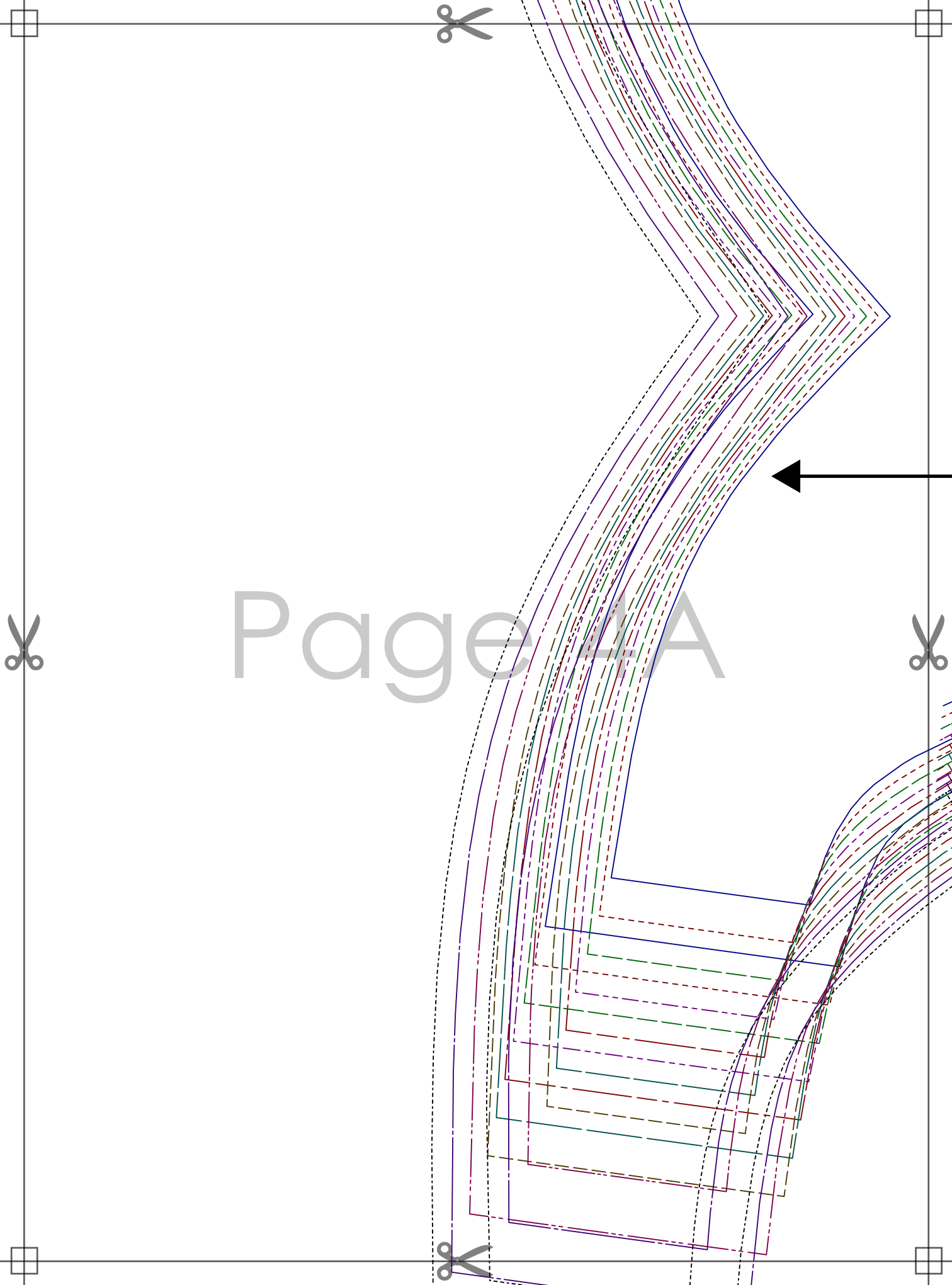
BACK

cut 1 on fold





Page 12



Page 1A



EMMA FLUTED HEM DRESS

with seam allowance

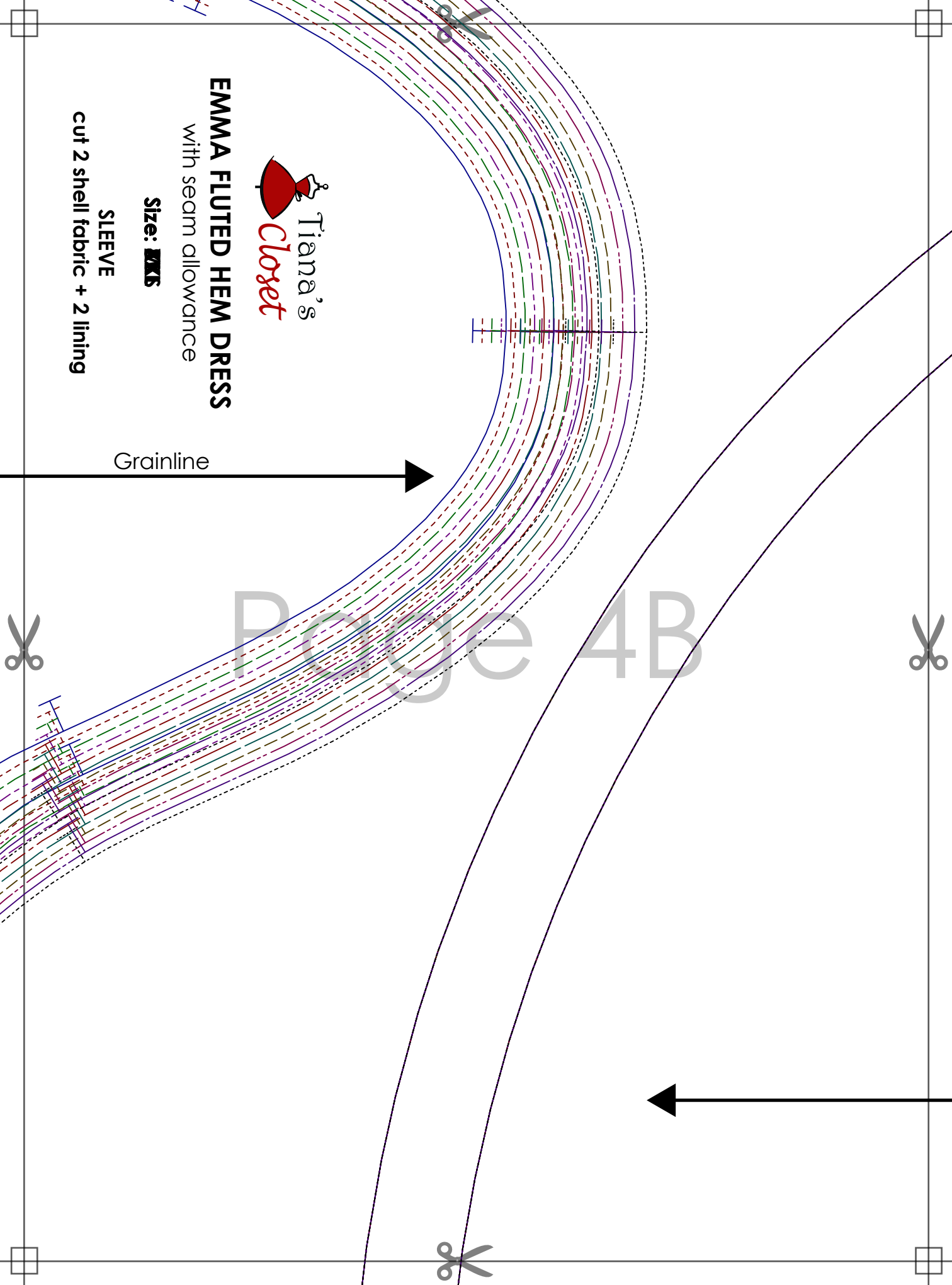
Size: **MKS**

SLEEVE

cut 2 shell fabric + 2 lining

Grainline

PROJECT 4B





EMMA FLUTED HEM DRESS

with seam allowance

Size: **M**

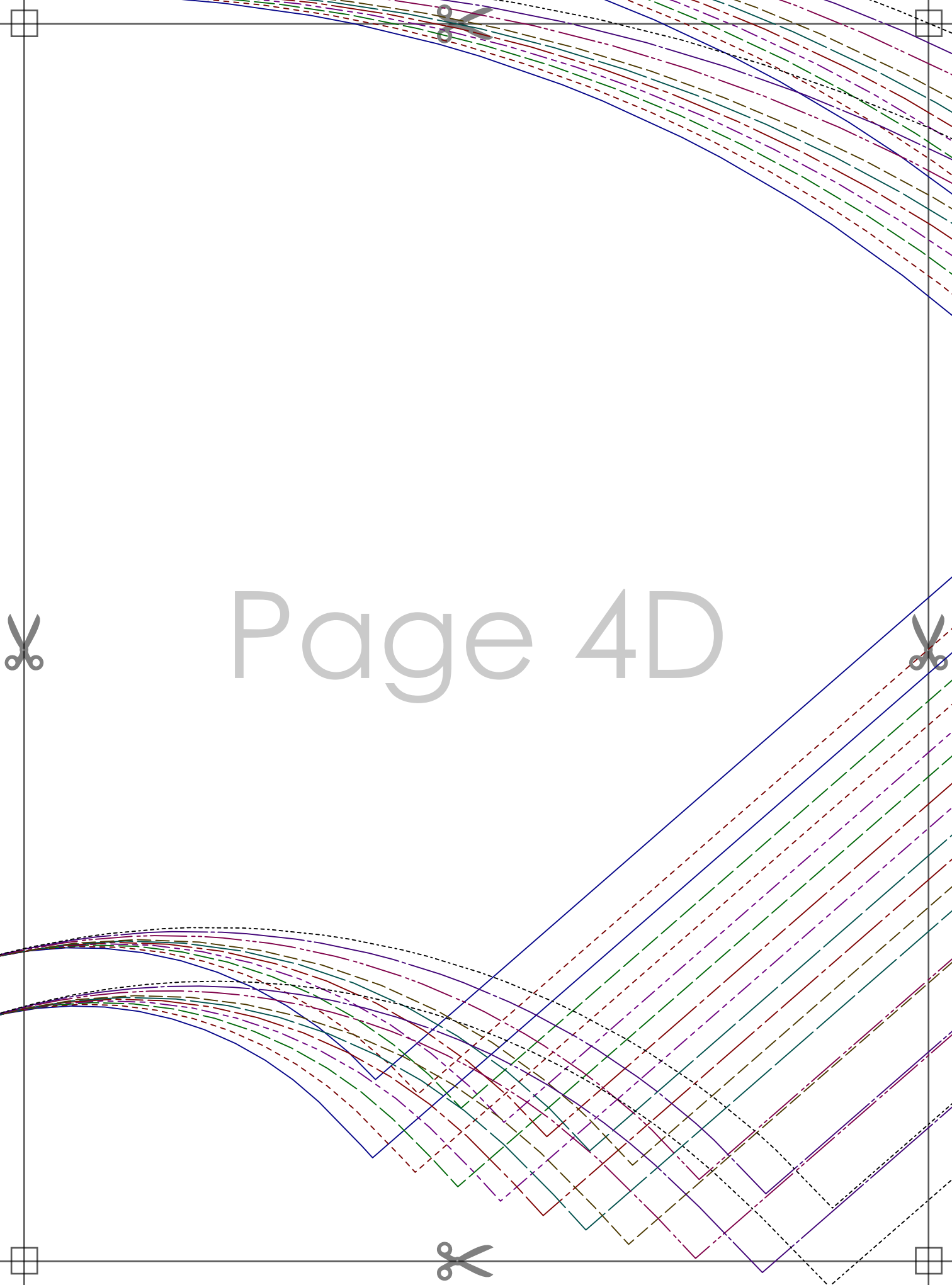
Size: **S**
BACK FLOUNCE

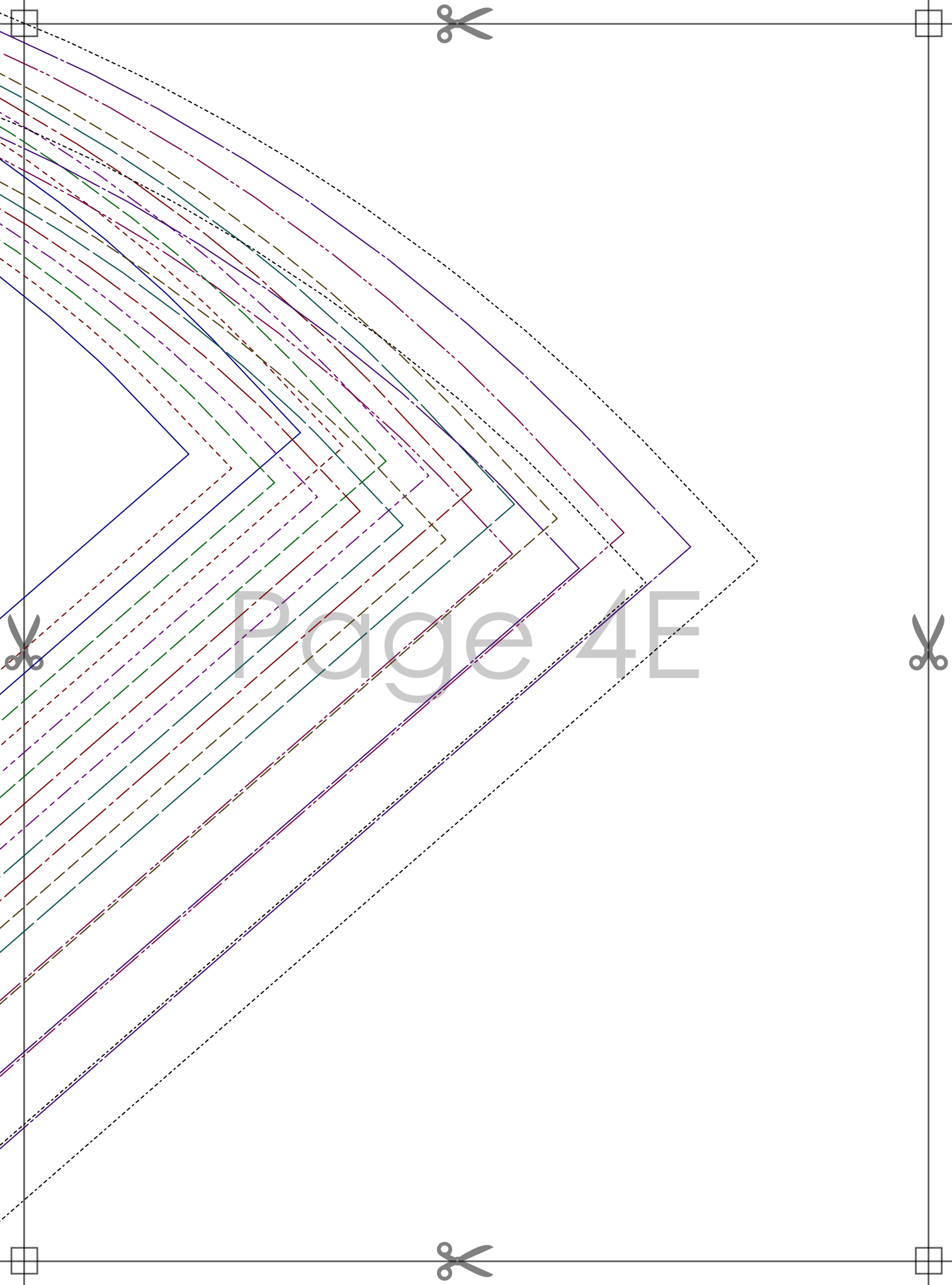
cut 1 on fold

Grainline

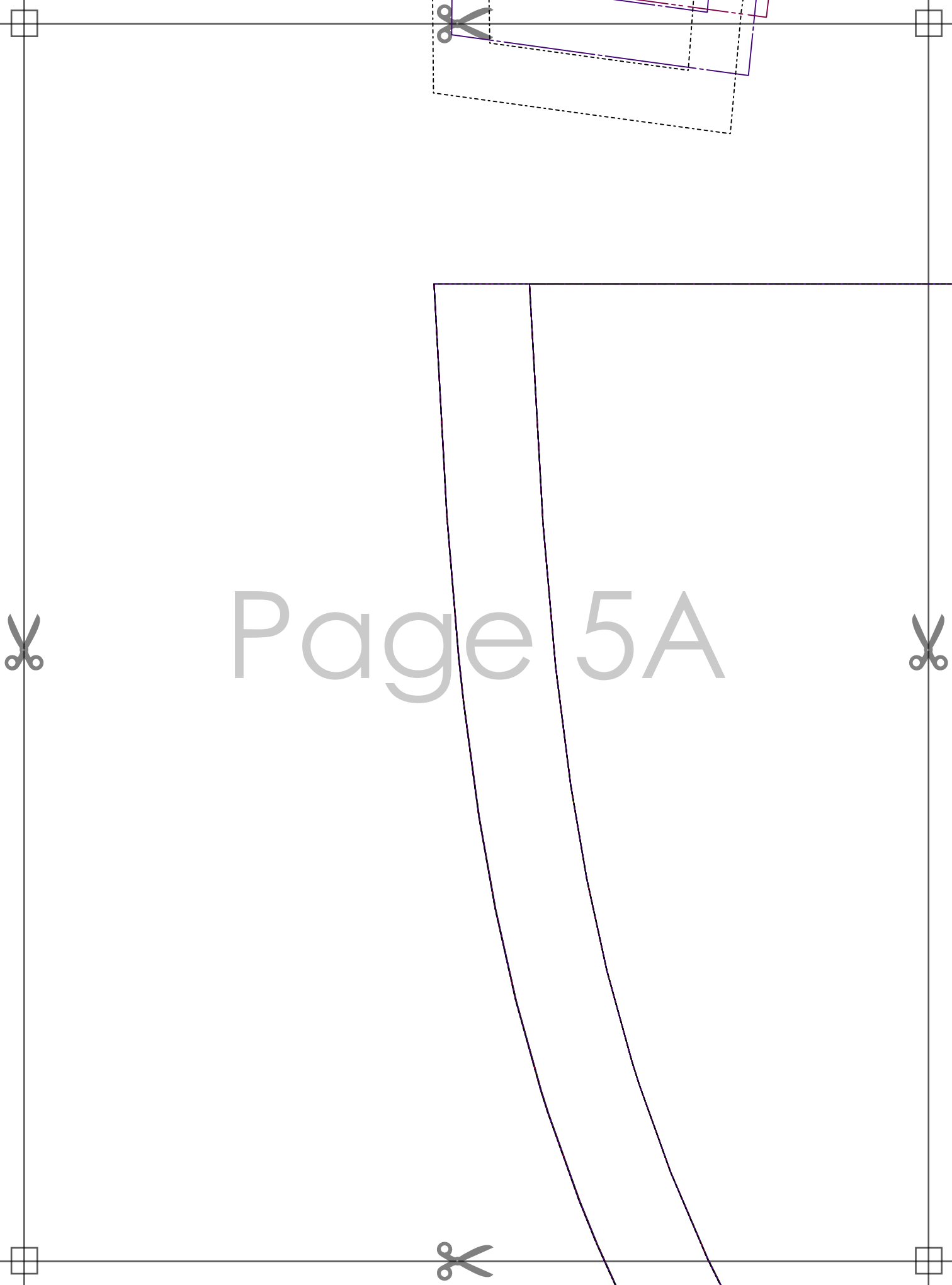


Page 4D



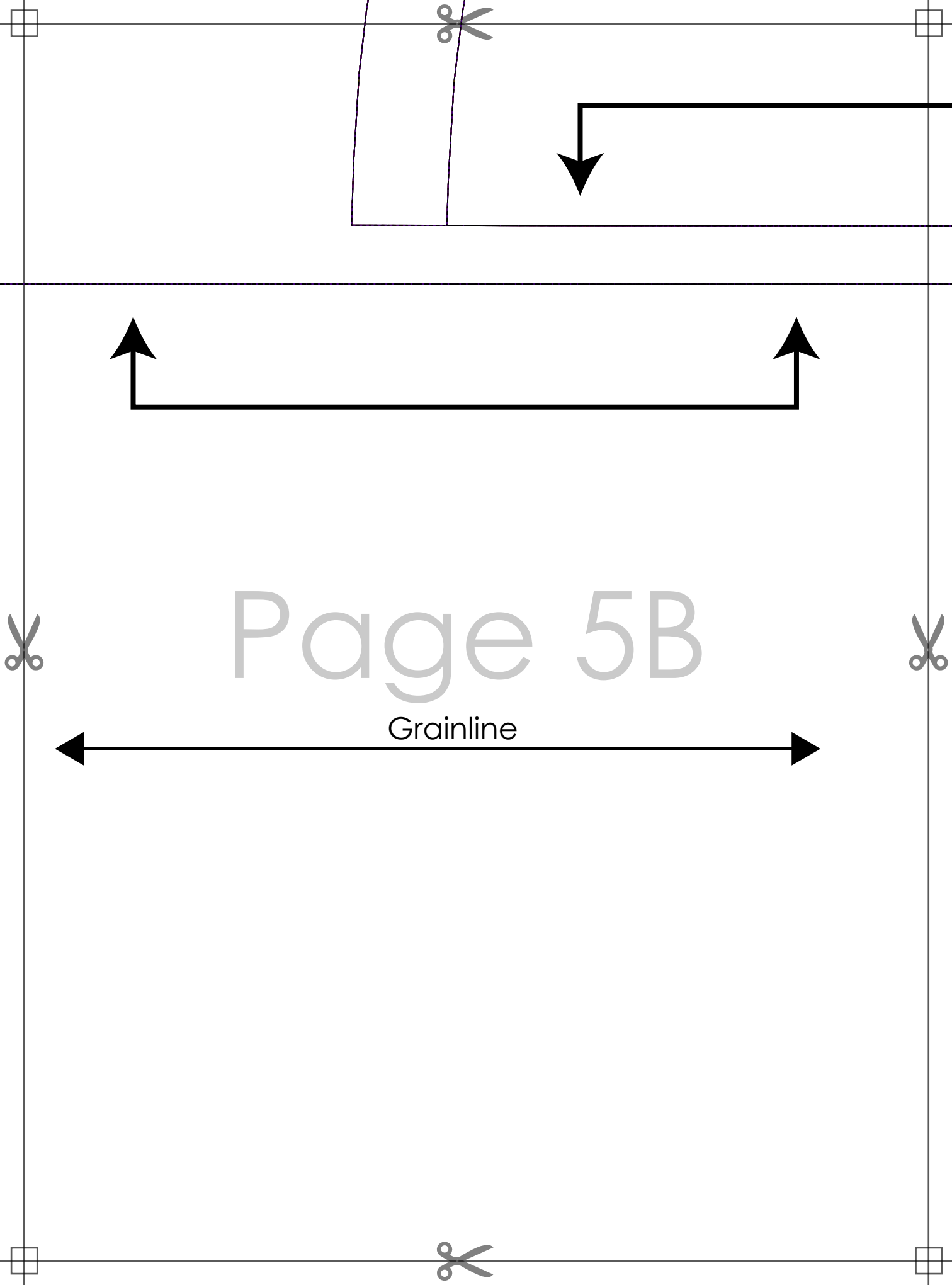


Page 4E



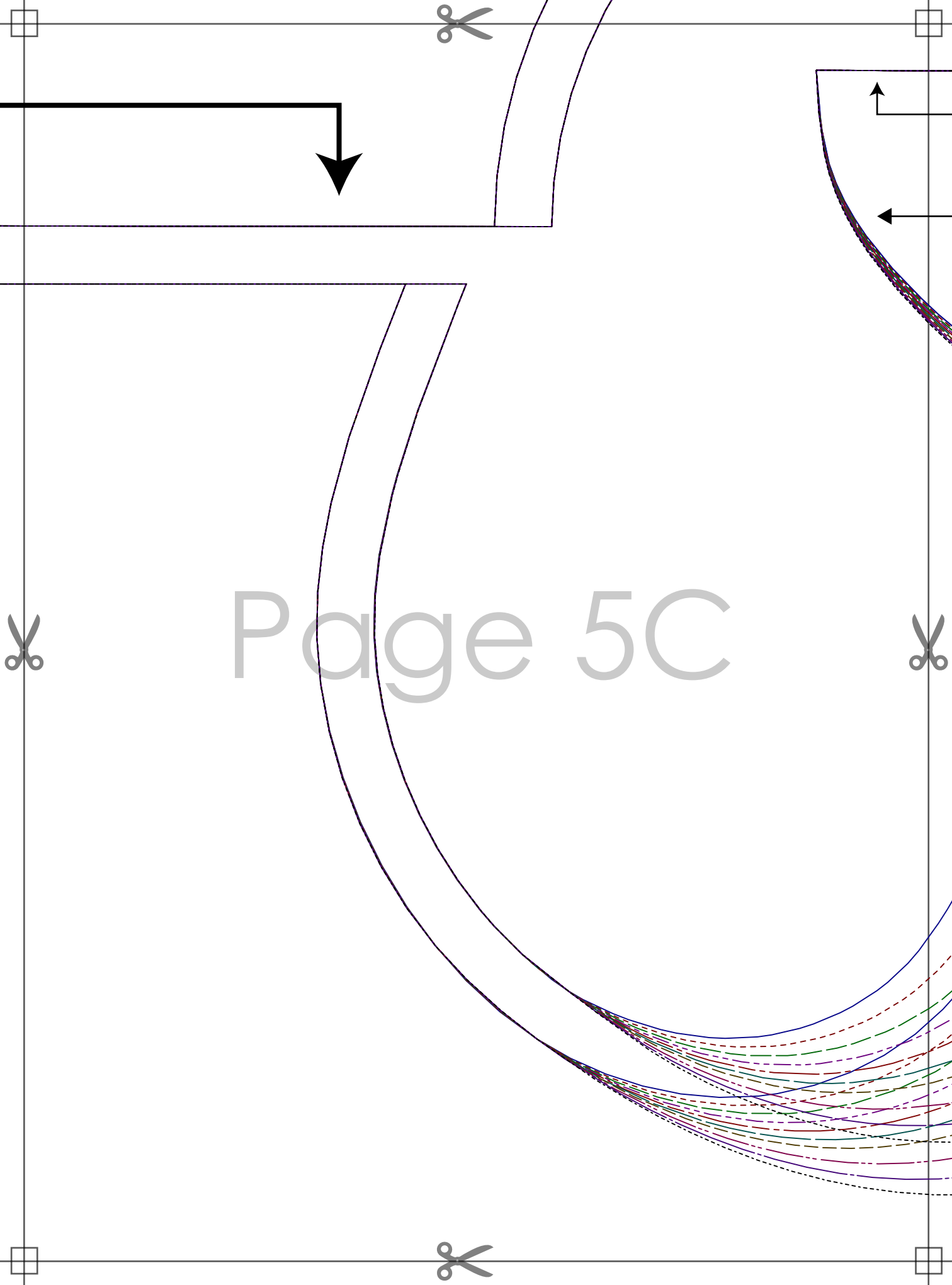
Page 5A





Page 5B

Grainline



Page 5C



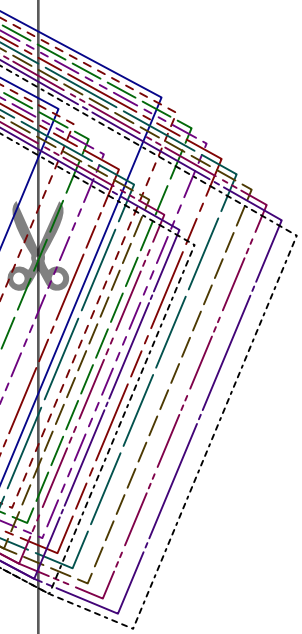
Grainline



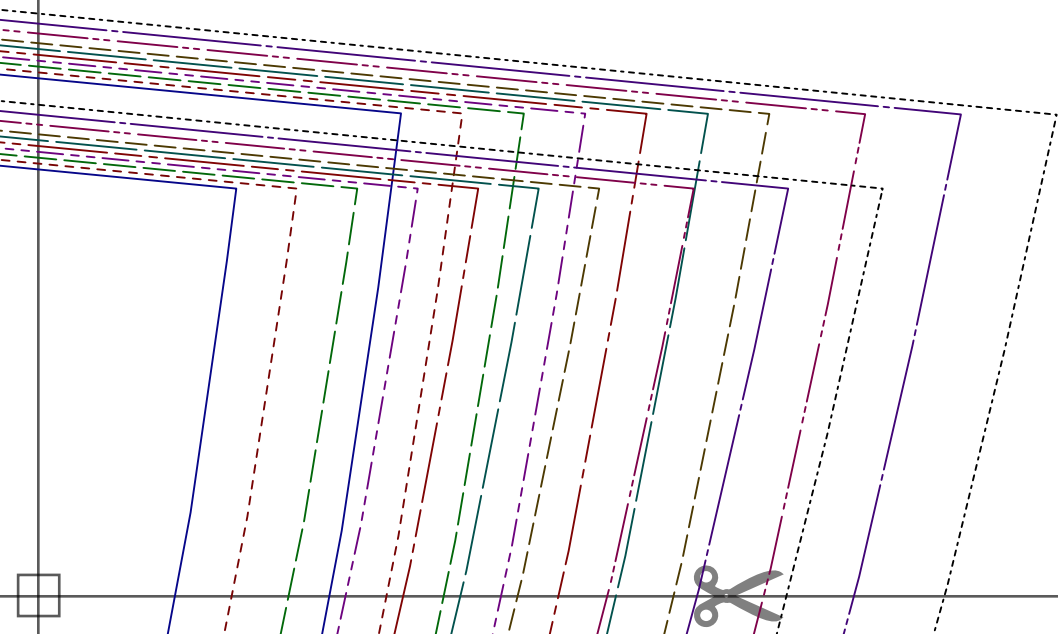

 Tiana's
Closet
EMMA FLUTED HEM DRESS
 with seam allowance
 Size: **XXXS**
BACK FACING
 cut 1 on fold

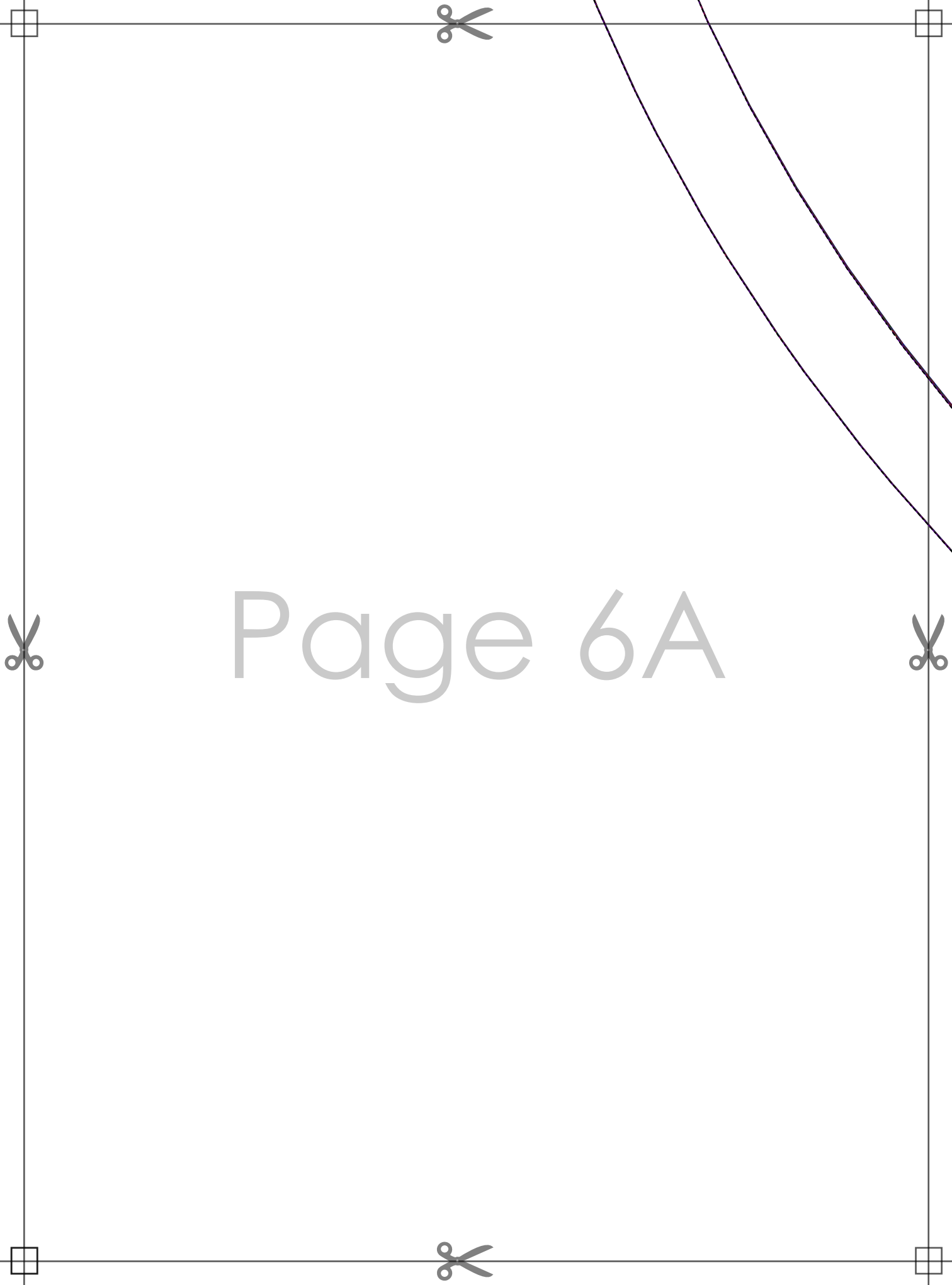
Page 5D





Page 5E



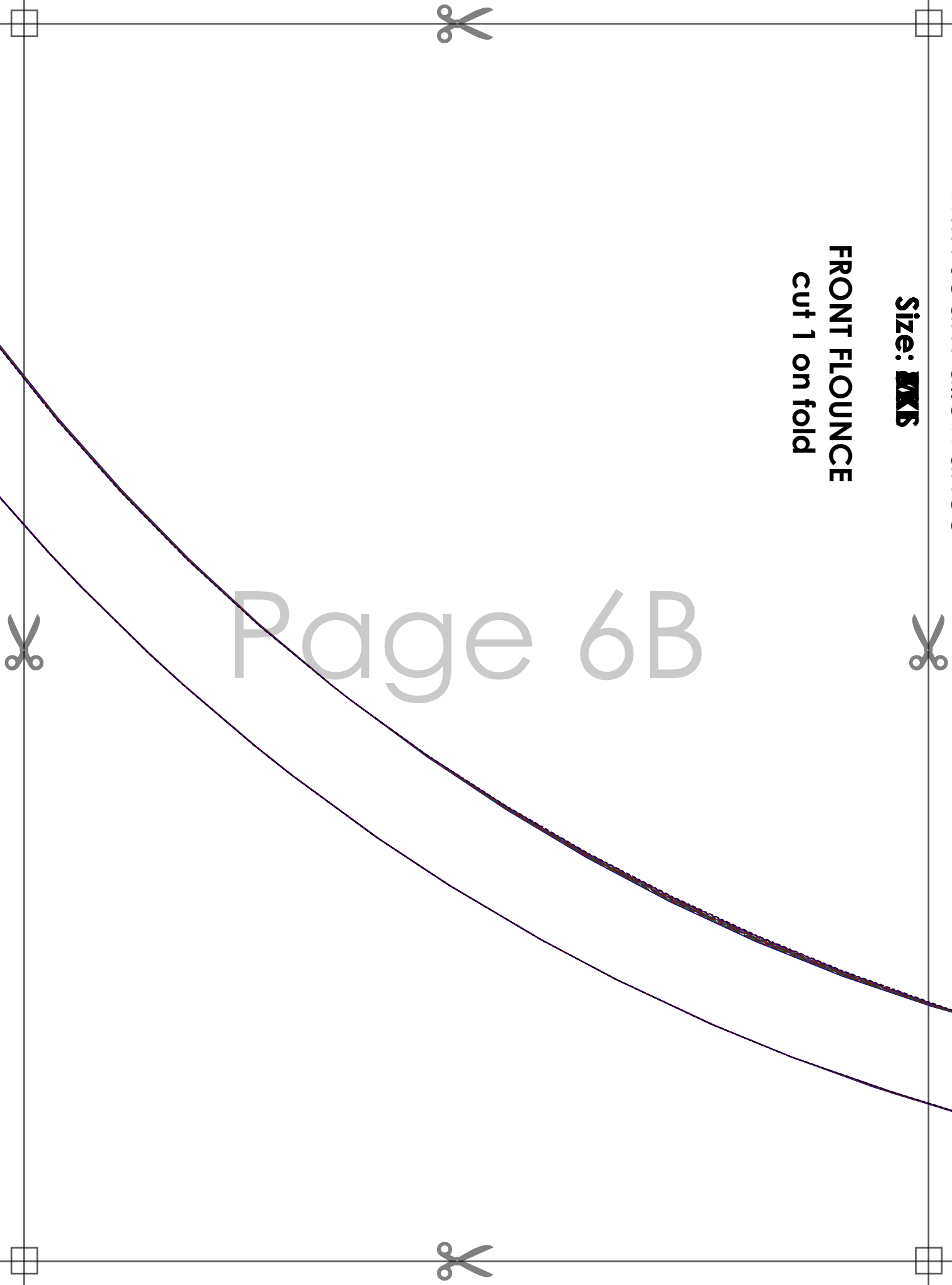


Page 6A

Size: **MKB**

FRONT FLOUNCE
cut 1 on fold

Page 6B



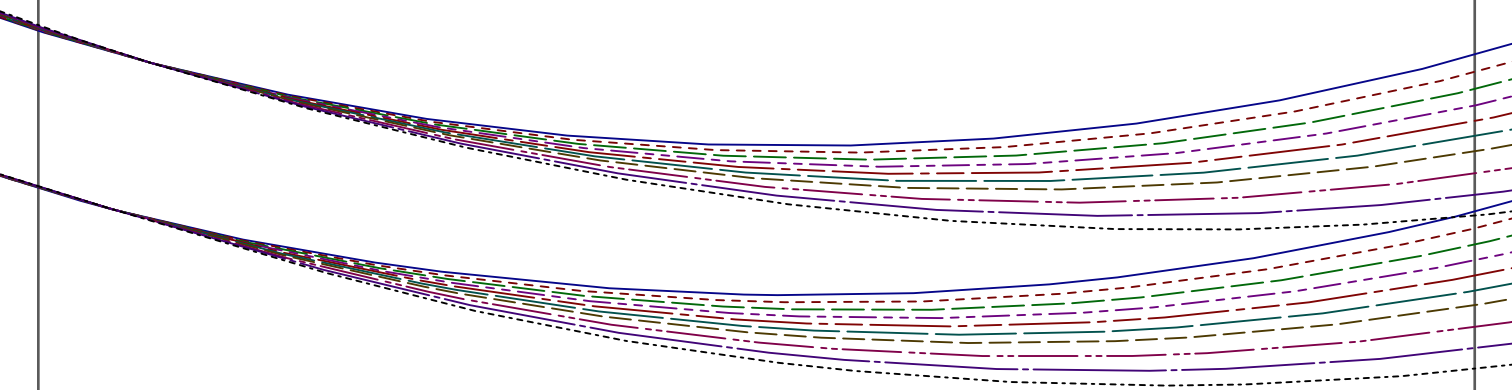


Page 6C

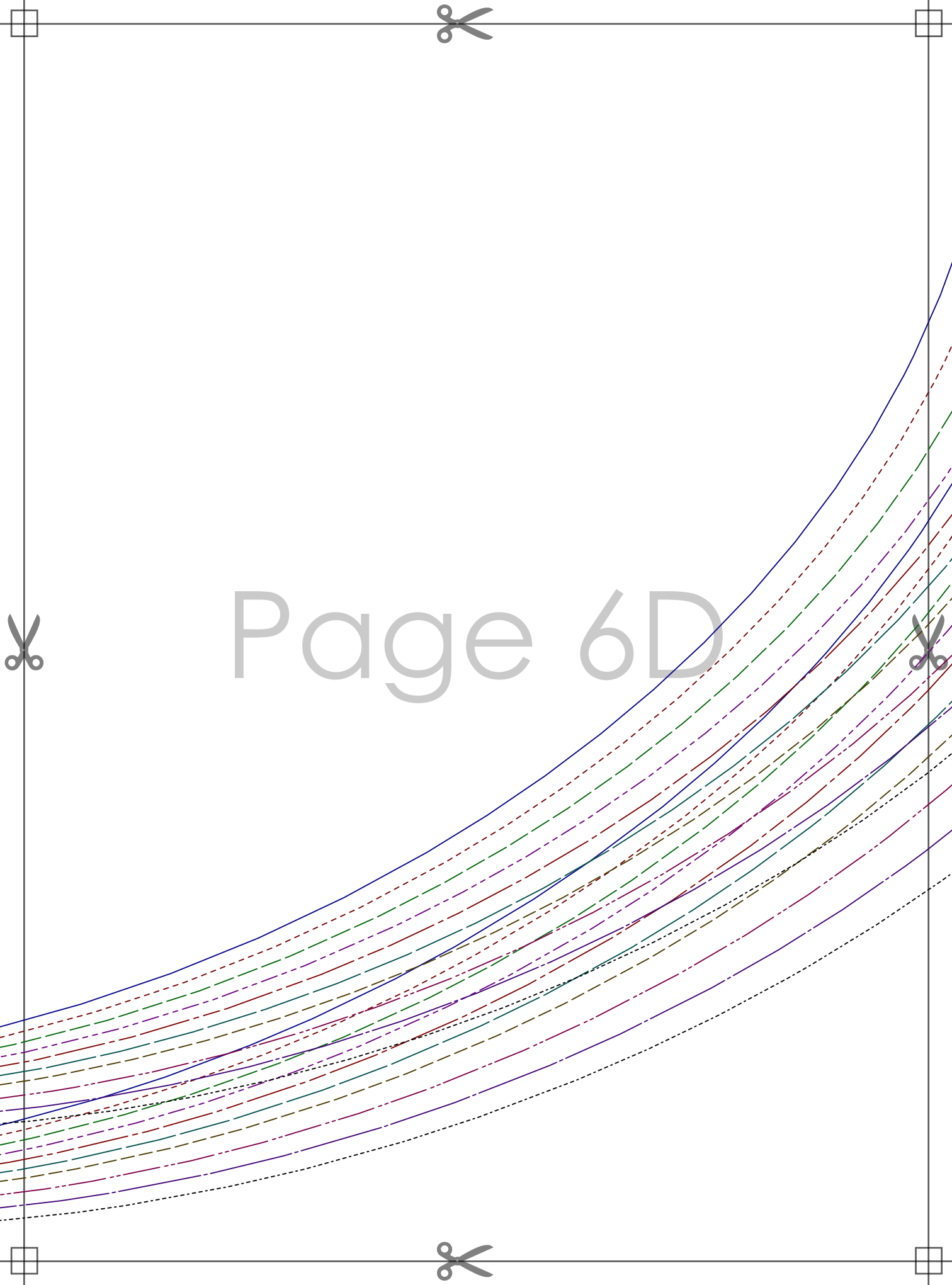
EMMA FLUTED HEM DRESS

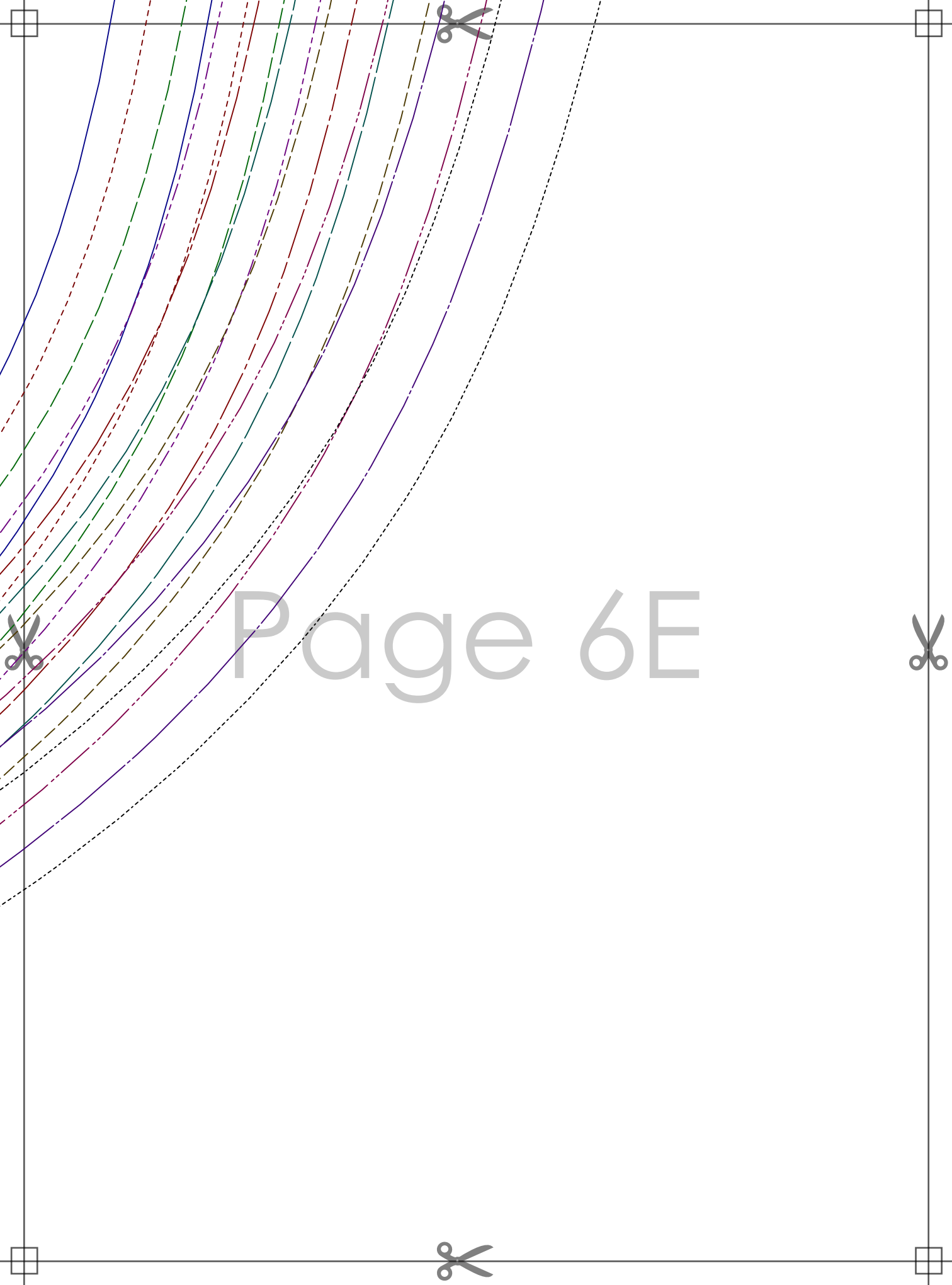
with seam allowance

Size: **MK**



Page 6D





Page 6E