

Centimeters

0 1 2 3 4 5 6 7 8 9 10

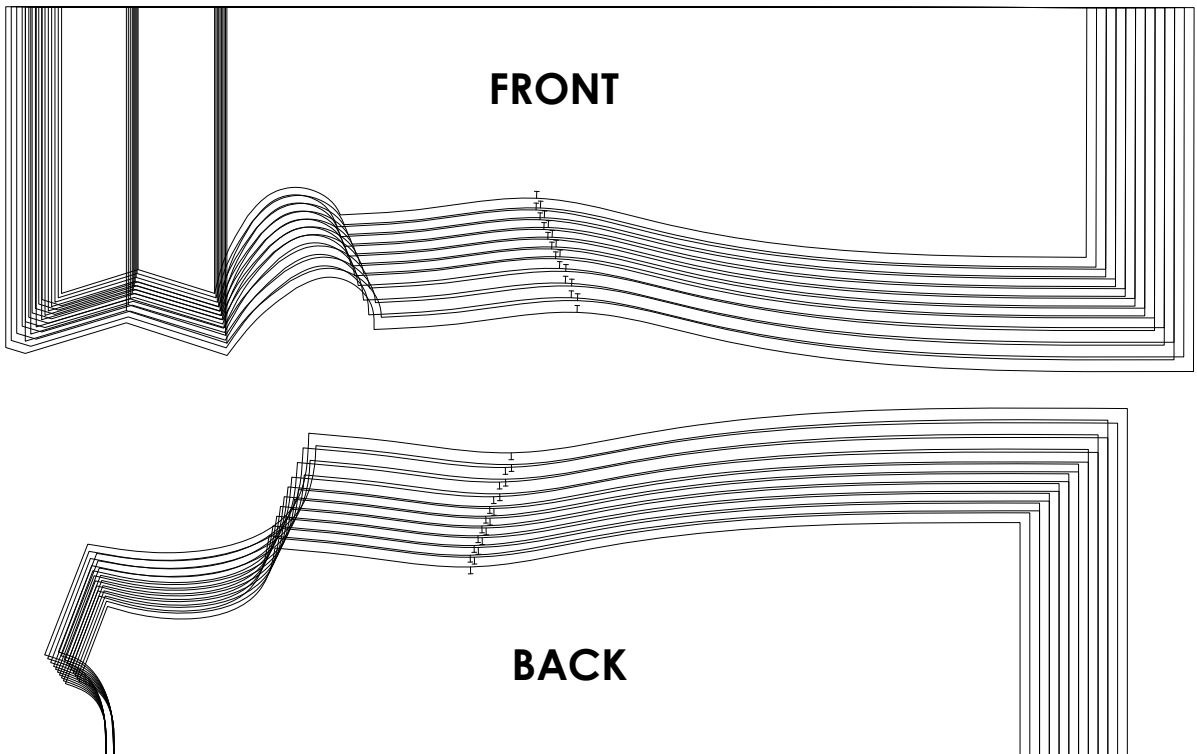
Inches

SIZE TABLE FOR TIANA'S CLOSET PATTERNS

Size		XXS	XS	S	M	L	XL	XXL	3XL	4XL	5XL
Bust	centimeter	80	84	88	92	96	100	104	110	116	120
	inch	31.5	33.1	34.6	36.2	37.8	39.4	40.9	43.3	45.7	47.2
Waist	centimeter	60	64	68	72	76	80	84	90	96	102
	inch	23.6	25.2	26.8	28.3	29.9	31.5	33.1	35.4	37.8	40.2
Hip	centimeter	88	92	96	100	104	108	112	118	126	132
	inch	34.6	36.2	37.8	39.4	40.9	42.5	44.1	46.5	49.6	52.0

Printing instruction:

- Patterns are made in layered PDF format, where all sizes are saved in one file and can be shown or hidden. In order to choose the desired size, go to Layers tab of your PDF reader, uncheck all boxes except for the desired size(s) and the box Print for all sizes.
- When printing the pattern, go to Print settings, in the tab Scale choose Custom scale: 100% (or Actual size) to print true to size. Note: some computers print smaller than true size even when you choose 100%, so you will have to adjust the scale to a little larger than 100% and measure the test square until you get the true size.
- The test square is 10 centimeters (horizontally) and 4 inches (vertically).
- Always print the first page of the file and measure first to avoid waste of paper.
- After printing, cut the pages along the lines with scissors icon and align and tape the pages to their sequences. For example, 1A is taped to 1B in a row, and 1A is taped to 2A in a column.
- You can see photo instruction on Tiana's Closet website: <https://tianascloset.com/index.php/how-to-print-tianas-closet-patterns/>



Page 1A

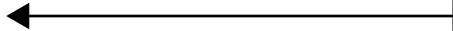
Page 1B



LILY DRAPED NECK DRESS
with seam allowance

~~SKIRT~~

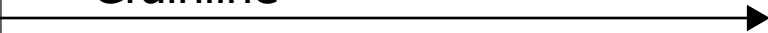
FRONT
cut 1 on fold



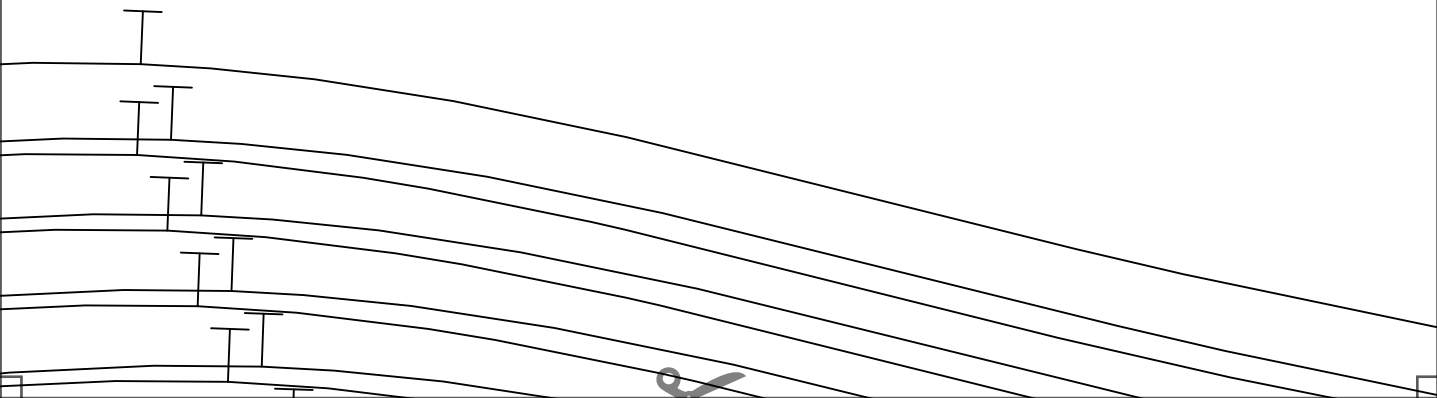


Fold along this line

Grainline



Page 1D



Page 1E

Page 1F

Page 1 G



Page 2A





Page 2B





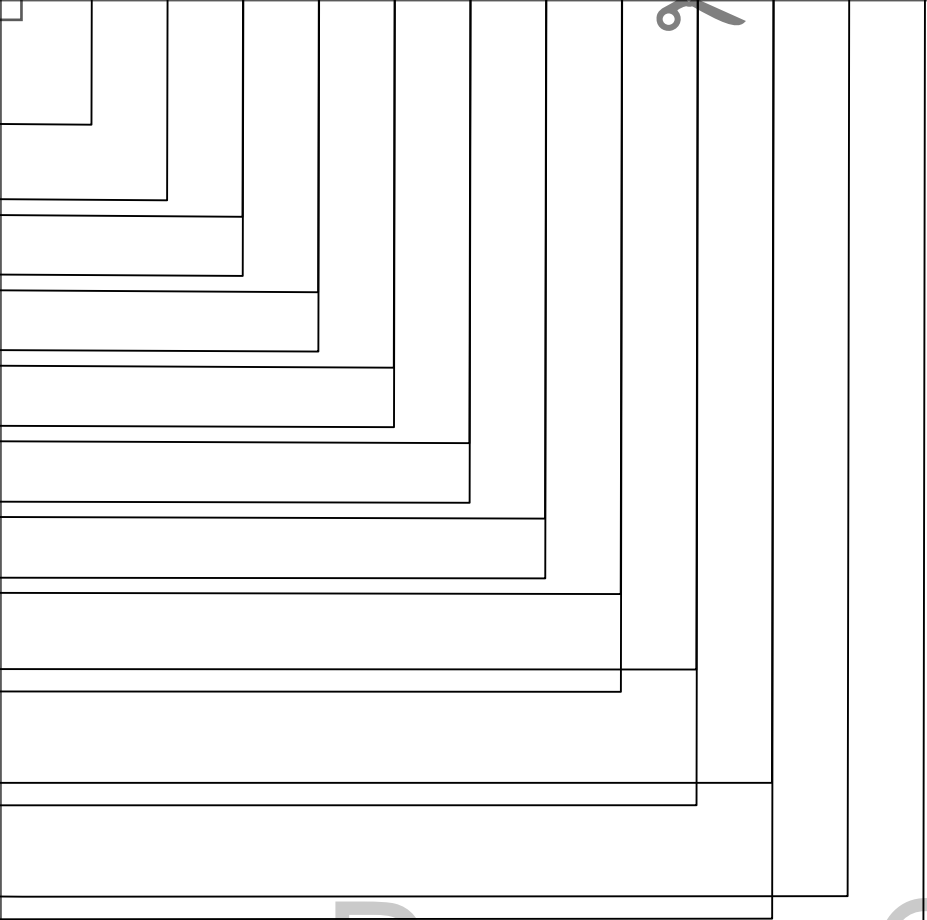
Page 2C



Page 2D

Page 2E

Page 2F



Page 2G

Page 3A



LILY DRAPED NECK DRESS
with seam allowance

~~SIZE 10-12~~

BACK
cut 1 on fold

Page 3B



Page 3C

Grainline



Fold along this line

Page 3D

Page 3E

Page 3F