

PRINTING INSTRUCTIONS

- Tiana's Closet sewing patterns are made in Layered PDF format, which means all sizes are saved in one file and can be shown or hidden. It is recommended to use Adobe Acrobat Reader (paid version on Mac OS, free on Windows) or Foxit PDF Reader (free, works on Windows only) to read the file correctly. In order to choose the desired size(s), go to Layers tab of your PDF reader, uncheck all boxes except for the desired size(s) and the box Print for all sizes.

- When printing the pattern, go to Print settings, in the tab Scale choose Custom scale: 100% (or Scaling: None or Actual Size) to print true to size. Note: some computers print smaller than true size even when you choose 100% scale, so you will have to adjust the scale to a little larger than 100% and measure the test square until you get the true size using the test rulers

- Always print the first page of the file and measure to avoid waste of paper.

- After printing the pattern, cut the pages along the lines with scissors icon, align and tape the pages according to their sequences. For example, pages 1A, 1B, 1C, 1D... are line up in one row from left to right, pages 1A, 2A, 3A, 3B... are lined up in one column from up to down.

- You can find photo instruction for printing sewing patterns on Tiana's Closet website:
<https://tianasclot.com/index.php/how-to-print-tianas-closet-patterns/>

SIZE TABLE

WOMEN'S CLOTHING SIZE

- Sizing is based on body measurements.

- If between sizes, size up for woven fabric, size down for knit fabric.

Unit: centimeter

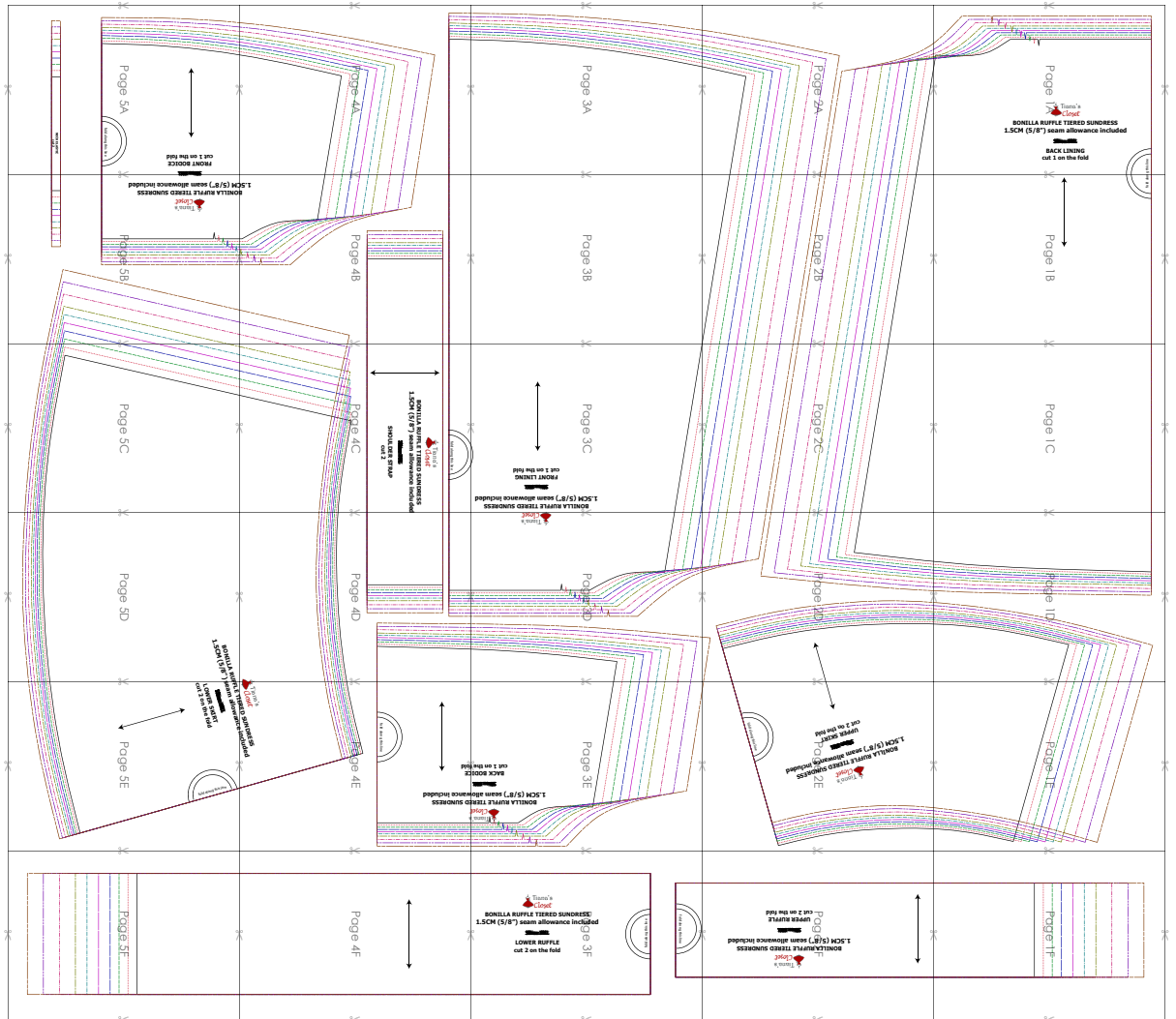
Size	XXS	XS	S	M	L	XL	XXL	3XL	4XL	5XL
Bust	80	84	88	92	96	100	104	110	116	122
Waist	60	64	68	72	76	80	84	90	96	102
Hip	88	92	96	100	104	108	112	118	124	130
Cross shoulder	35	36	37	38	39	40	41	42.5	44	45.5

Unit: inch

Size	XXS	XS	S	M	L	XL	XXL	3XL	4XL	5XL
Bust	31.5	33.1	34.6	36.2	37.8	39.4	40.9	43.3	45.7	48.0
Waist	23.6	25.2	26.8	28.3	29.9	31.5	33.1	35.4	37.8	40.2
Hip	34.6	36.2	37.8	39.4	40.9	42.5	44.1	46.5	48.8	51.2
Cross shoulder	13.8	14.2	14.6	15.0	15.4	15.7	16.1	16.7	17.3	17.9

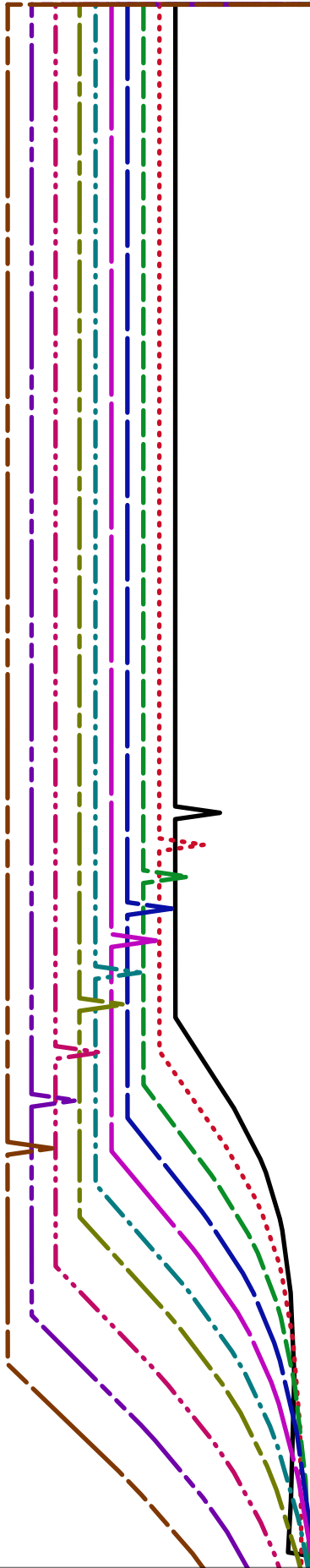
For more ideas and free sewing patterns, visit <http://tianasclot.com>

PATTERN LAYOUT



LEGEND

- SIZE XXS
- SIZE XS
- SIZE S
- SIZE M
- SIZE L
- SIZE XL
- SIZE XXL
- SIZE 3XL
- SIZE 4XL
- SIZE 5XL



Page 1



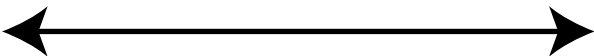
BONILLA RUFFLE TIERED SUNDRESS 1.5CM (5/8") seam allowance included

STITCHES

BACK LINING
cut 1 on the fold

ing this line

fold along



Page 1B

Page 1C

Page 1D

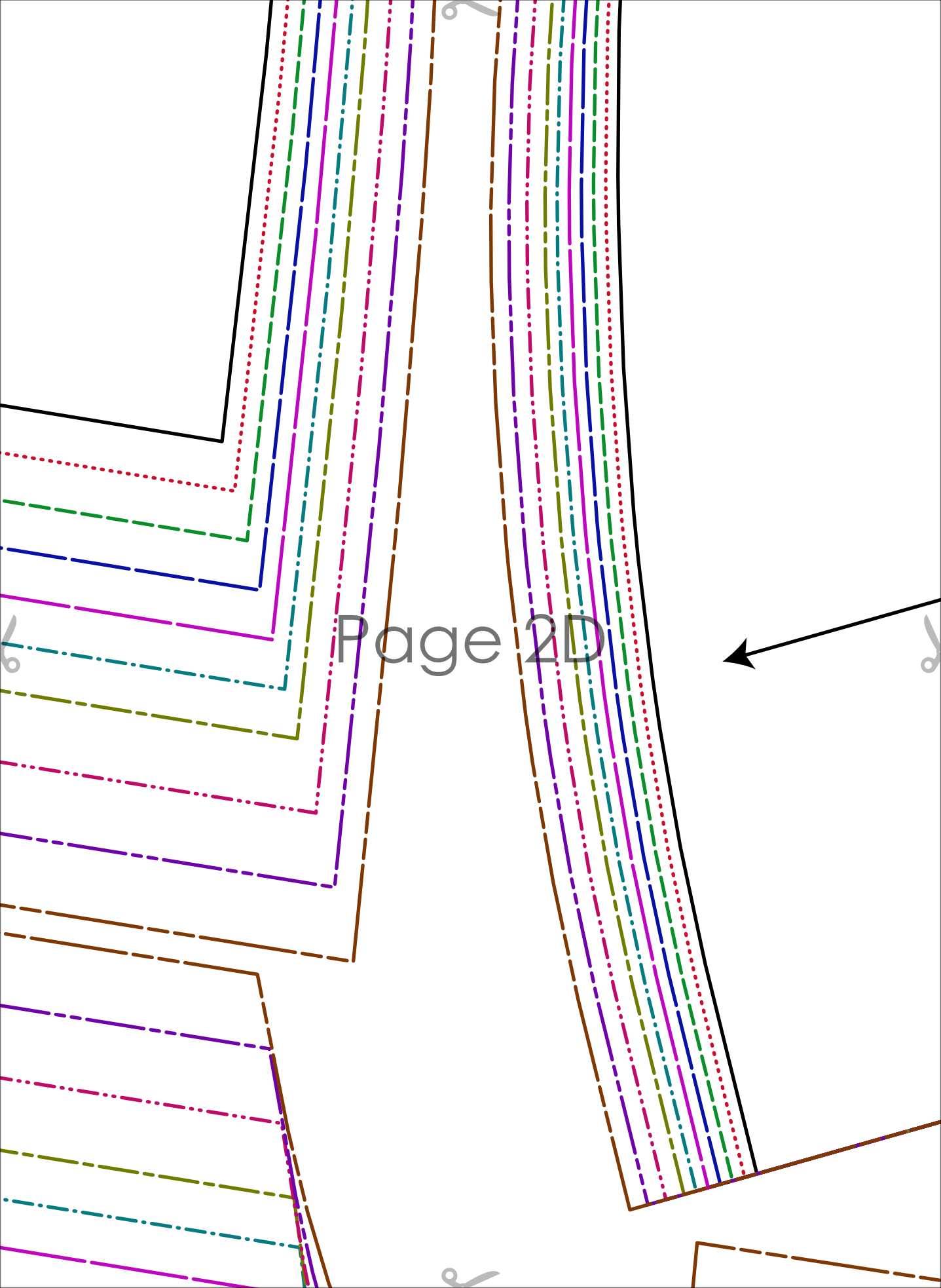
Page 1E

Page 1F

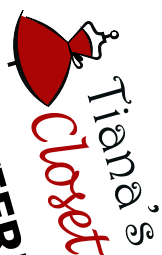
Page 2A

Page 2B

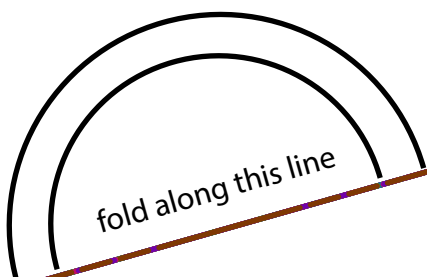
Page 2C



Page 2D



BONILLA RUFFLE TIERED SUNDRESS
1.5CM (5/8") seam allowance included
~~Size 2-3~~
UPPER SKIRT
cut 2 on the fold





BONILLA RUFFLE TIERED SUNDRESS 1.5CM (5/8") seam allowance included

SKIRT PARTS

UPPER RUFFLE

cut 2 on the fold



A series of eleven vertical lines of varying colors and styles (solid, dashed, dotted, dash-dot) in brown, purple, magenta, teal, blue, green, and red, running along the left edge of the page.

Page 3A

Four small, light gray scissors icons are positioned at the corners of the page: top-left, top-right, bottom-left, and bottom-right.

Page 3B

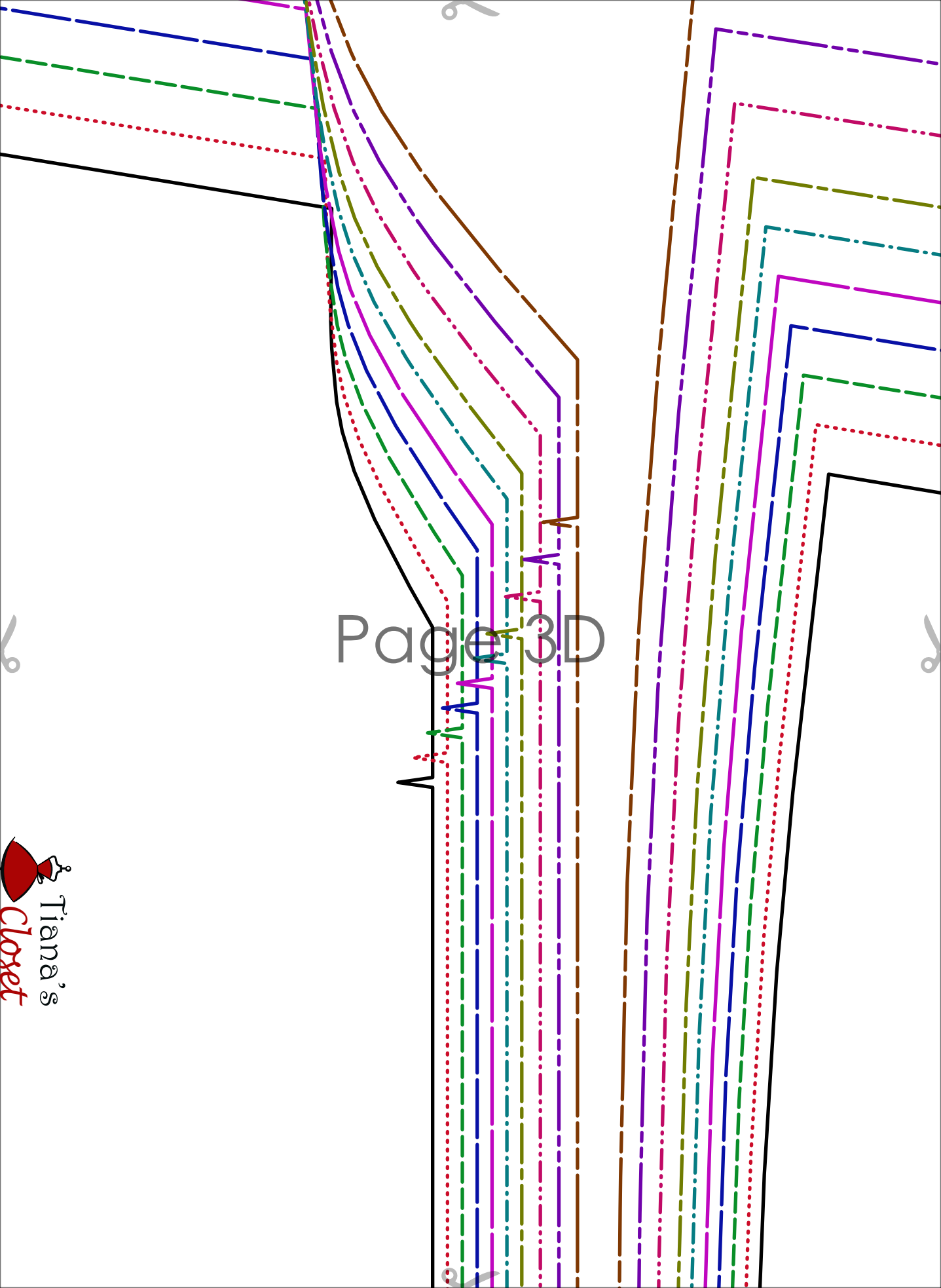
BONILLA RUFFLE TIERED SUNDRESS
1.5CM (5/8") seam allowance included

~~SEAMS~~

FRONT LINING
cut 1 on the fold

Page 3C





Page 3D



BONILLA RUFFLE TIERE
1.5CM (5/8") seam allow

BACK BODICE
cut 1 on the 1

Page 3E



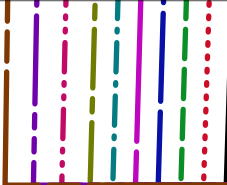
BONILLA RUFFLE TIERED SUNDRESS **1.5CM (5/8") seam allowance included**

~~Size 2-10~~

LOWER RUFFLE
cut 2 on the fold

fold along this line

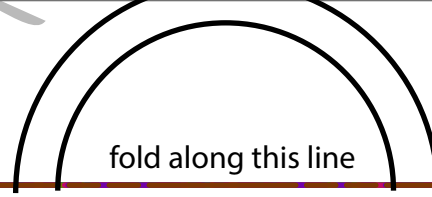
fold along this line



Page 4A

Page 4B

B
1.50



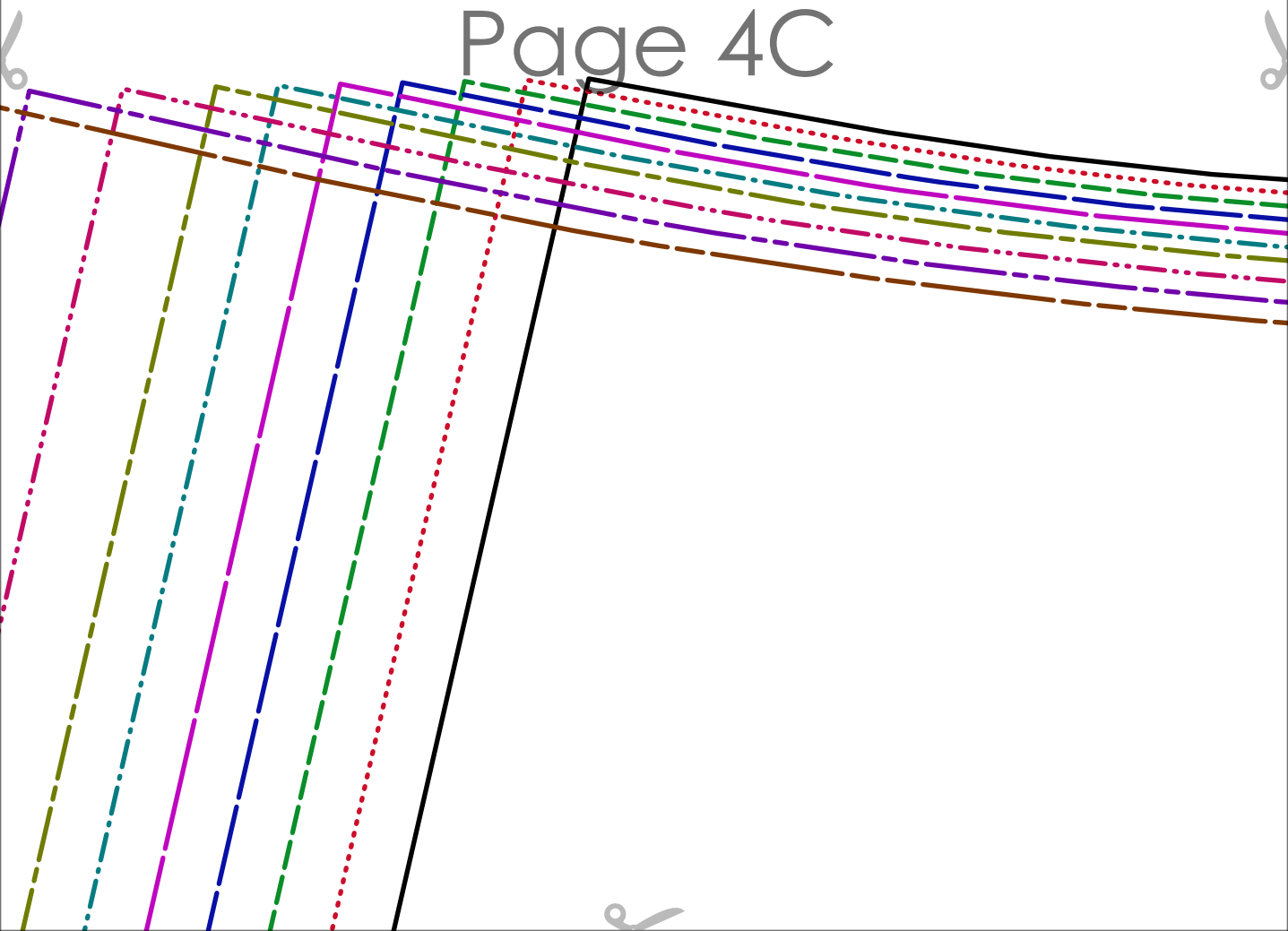
BONILLA RUFFLE TIERED SUNDRESS
1.5CM (5/8") seam allowance included

~~Size 2-3~~

SHOULDER STRAP
cut 2

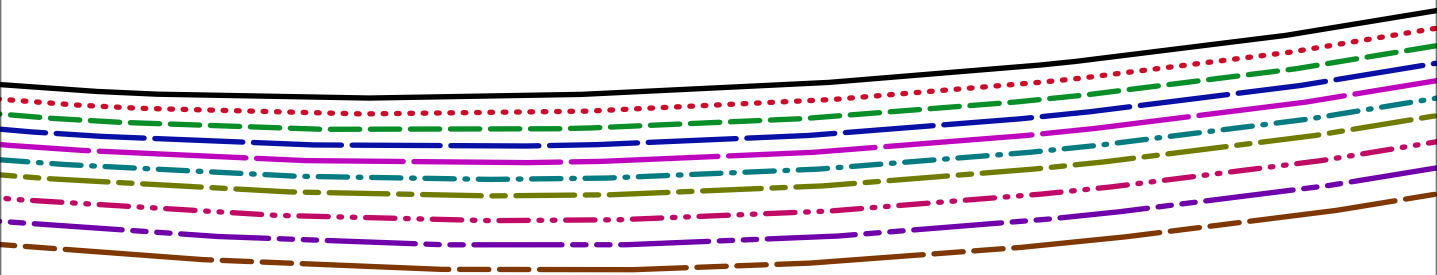


Page 4C



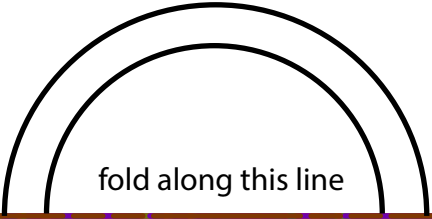
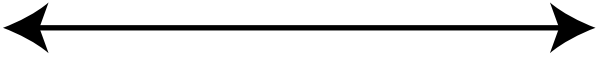


Page 4D



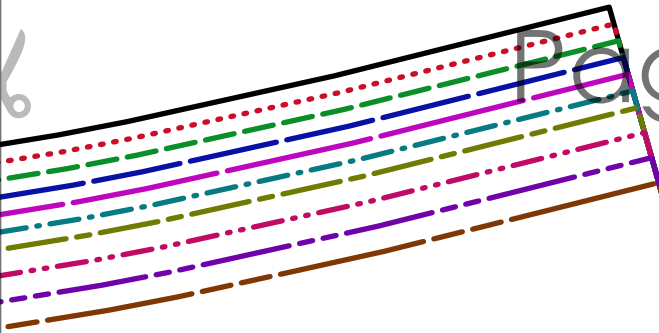
ED SUNDRESS
wance included

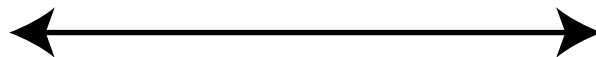
CE
fold



fold along this line

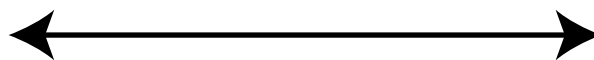
Page 4E



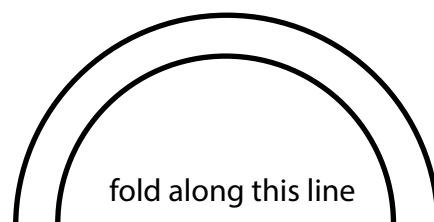


Page 4F

FRONT BODICE
cut 1 on the fold

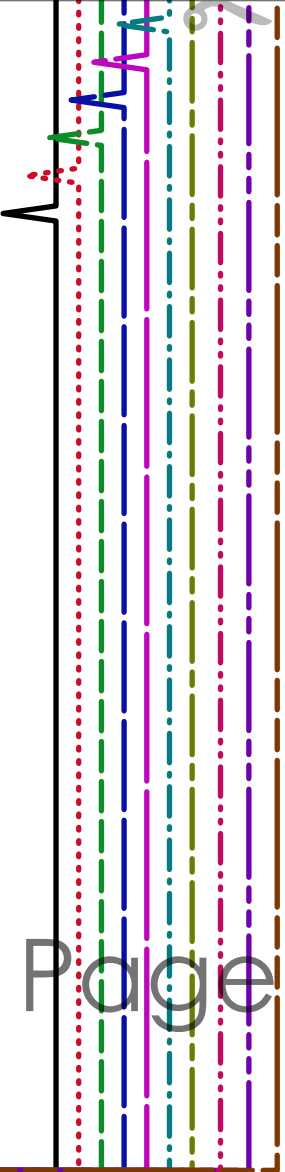
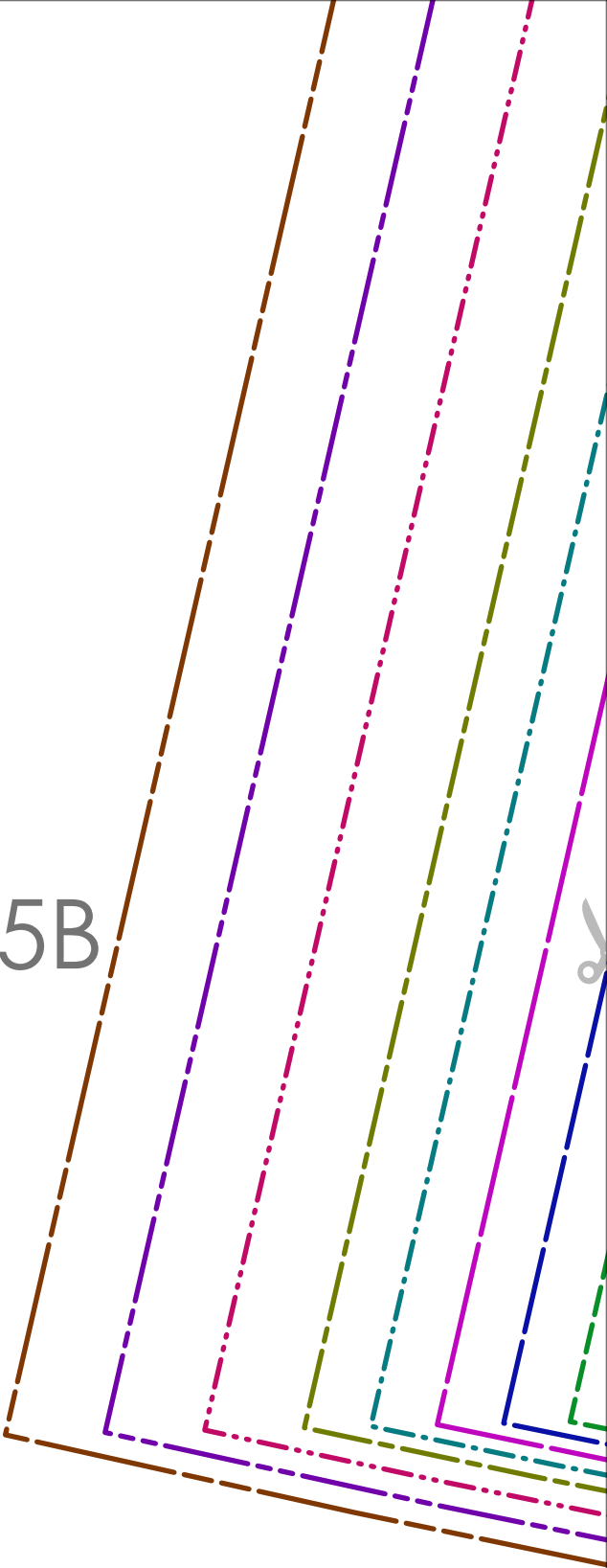


Page 5A



NECK ELASTIC
cut 2





Page 5B



SONILLA RUFFLE TIERED SUNDRESS
CM (5/8") seam allowance included



The image shows a technical drawing or a page layout. It features a large, irregular shape defined by a solid black line. Inside this shape, the text "Page 5C" is centered. The drawing is composed of several parallel lines of different colors and styles: a solid black line, a dotted red line, a dashed green line, a dash-dot blue line, a long-dash magenta line, and a short-dash yellow line. These lines are arranged in a series of parallel bands that follow the general shape of the main figure. The background is white. There are small, faint marks at the corners of the page, possibly indicating where to fold or cut.

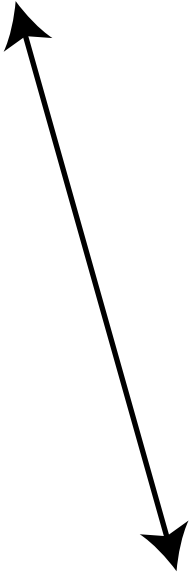
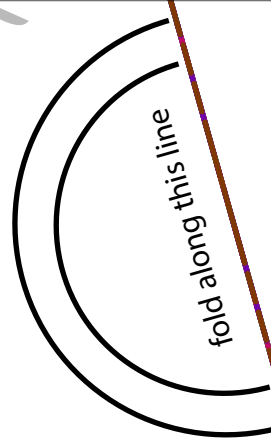
Page 5C

Page 5D

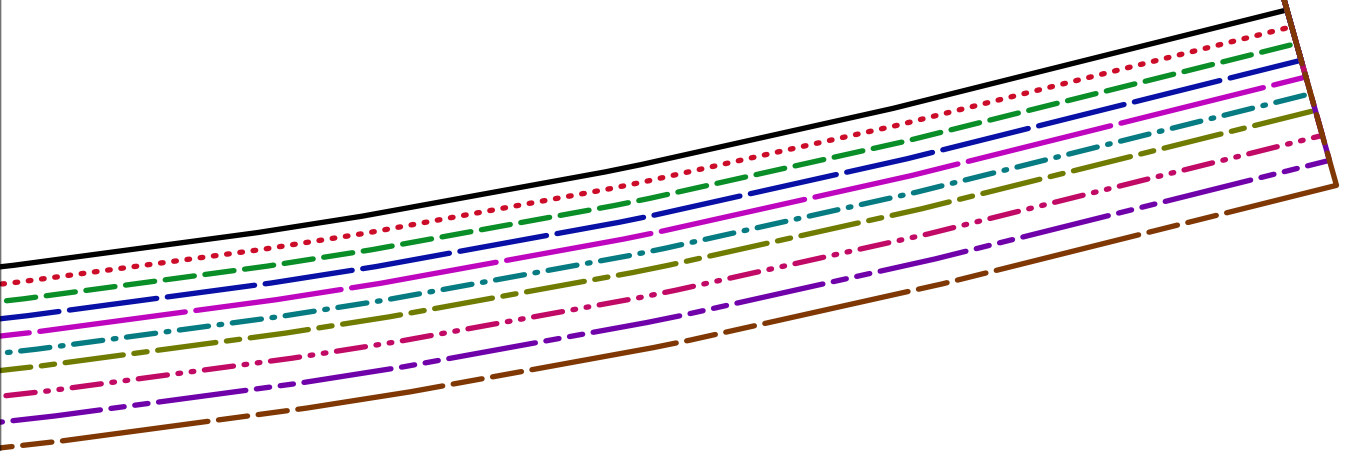
FILE TIE
seam allowance

~~Size M~~

LOWER SKIRT
cut 2 on the fold



Page 5E



Page 5F