

PRINTING INSTRUCTIONS

- Tiana's Closet sewing patterns are made in Layered PDF format, which means all sizes are saved in one file and can be shown or hidden. It is recommended to use Adobe Acrobat Reader (paid version on Mac OS, free on Windows) or Foxit PDF Reader (free, works on Windows only) to read the file correctly. In order to choose the desired size(s), go to Layers tab of your PDF reader, uncheck all boxes except for the desired size(s) and the box Print for all sizes.

- When printing the pattern, go to Print settings, in the tab Scale choose Custom scale: 100% (or Scaling: None or Actual Size) to print true to size. Note: some computers print smaller than true size even when you choose 100% scale, so you will have to adjust the scale to a little larger than 100% and measure the test square until you get the true size using the test rulers

- Always print the first page of the file and measure to avoid waste of paper.

- After printing the pattern, cut the pages along the lines with scissors icon, align and tape the pages according to their sequences. For example, pages 1A, 1B, 1C, 1D... are line up in one row from left to right, pages 1A, 2A, 3A, 3B... are lined up in one column from up to down.

- You can find photo instruction for printing sewing patterns on Tiana's Closet website:

<https://tianscloset.com/index.php/how-to-print-tianas-closet-patterns/>

SIZE TABLE

WOMEN'S CLOTHING SIZE

- Sizing is based on body measurements.

- If between sizes, size up for woven fabric, size down for knit fabric.

Unit: centimeter

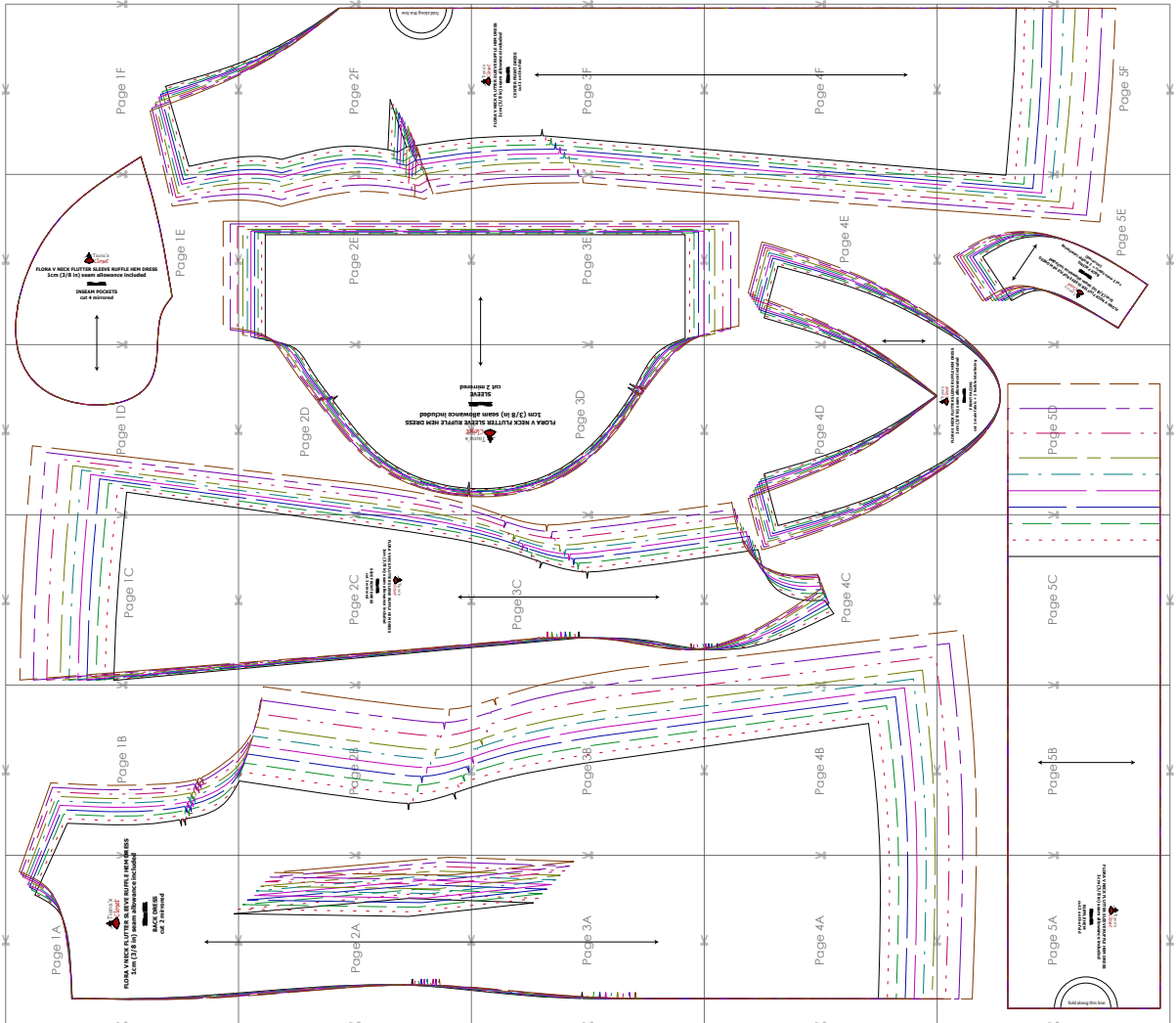
Size	XXS	XS	S	M	L	XL	XXL	3XL	4XL	5XL
Bust	80	84	88	92	96	100	104	110	116	122
Waist	60	64	68	72	76	80	84	90	96	102
Hip	88	92	96	100	104	108	112	118	124	130
Cross shoulder	35	36	37	38	39	40	41	42.5	44	45.5

Unit: inch

Size	XXS	XS	S	M	L	XL	XXL	3XL	4XL	5XL
Bust	31.5	33.1	34.6	36.2	37.8	39.4	40.9	43.3	45.7	48.0
Waist	23.6	25.2	26.8	28.3	29.9	31.5	33.1	35.4	37.8	40.2
Hip	34.6	36.2	37.8	39.4	40.9	42.5	44.1	46.5	48.8	51.2
Cross shoulder	13.8	14.2	14.6	15.0	15.4	15.7	16.1	16.7	17.3	17.9

For more ideas and free sewing patterns, visit <http://tianscloset.com>

PATTERN LAYOUT



LEGEND

- SIZE XXS
- SIZE XS
- SIZE S
- SIZE M
- SIZE L
- SIZE XL
- SIZE XXL
- SIZE 3XL
- SIZE 4XL
- SIZE 5XL

Page 1A



FLORA V NECK FLUTTER SLEEVE RUFFLE HEM D
1cm (3/8 in) seam allowance included

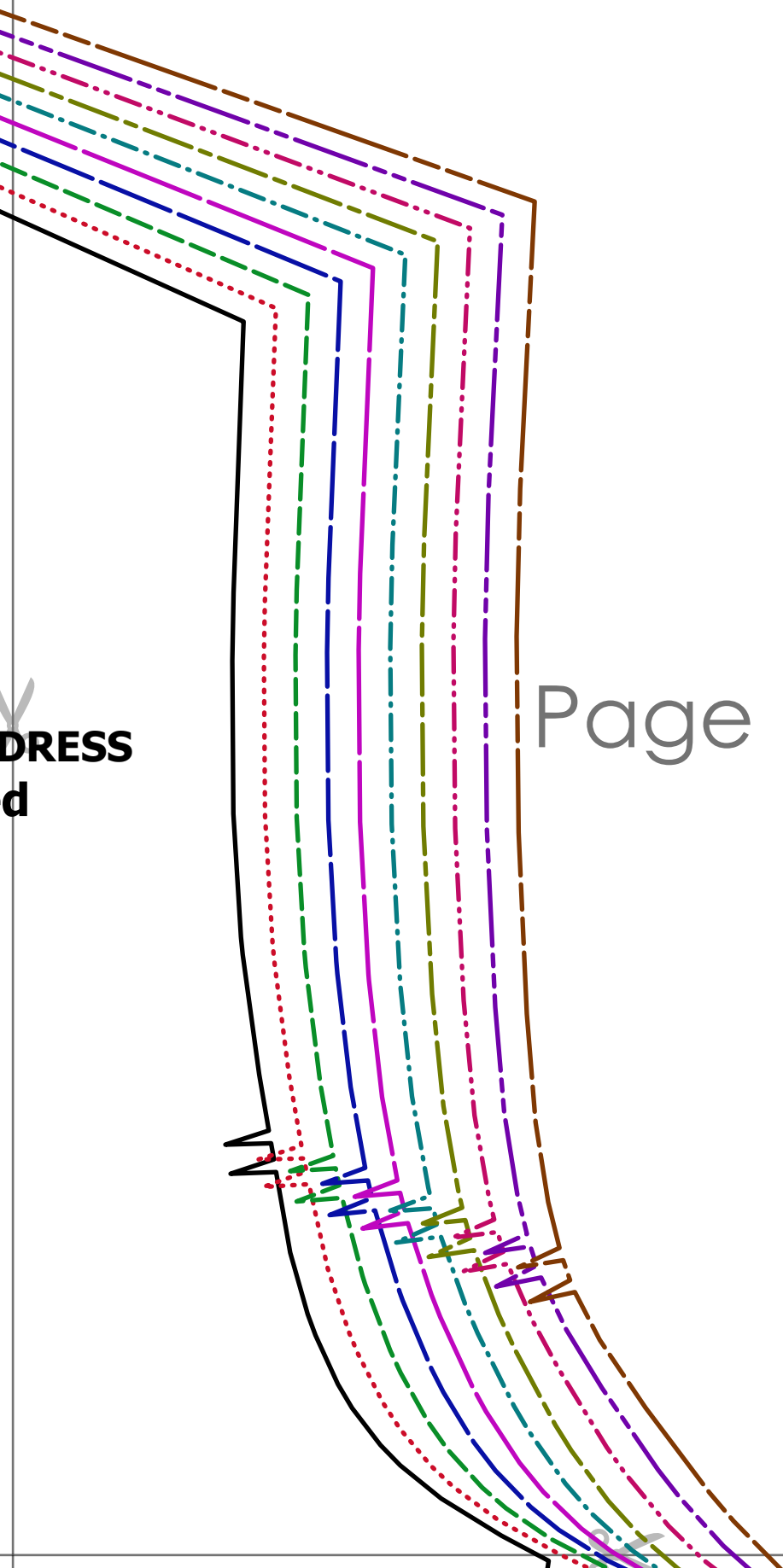
~~Size M~~

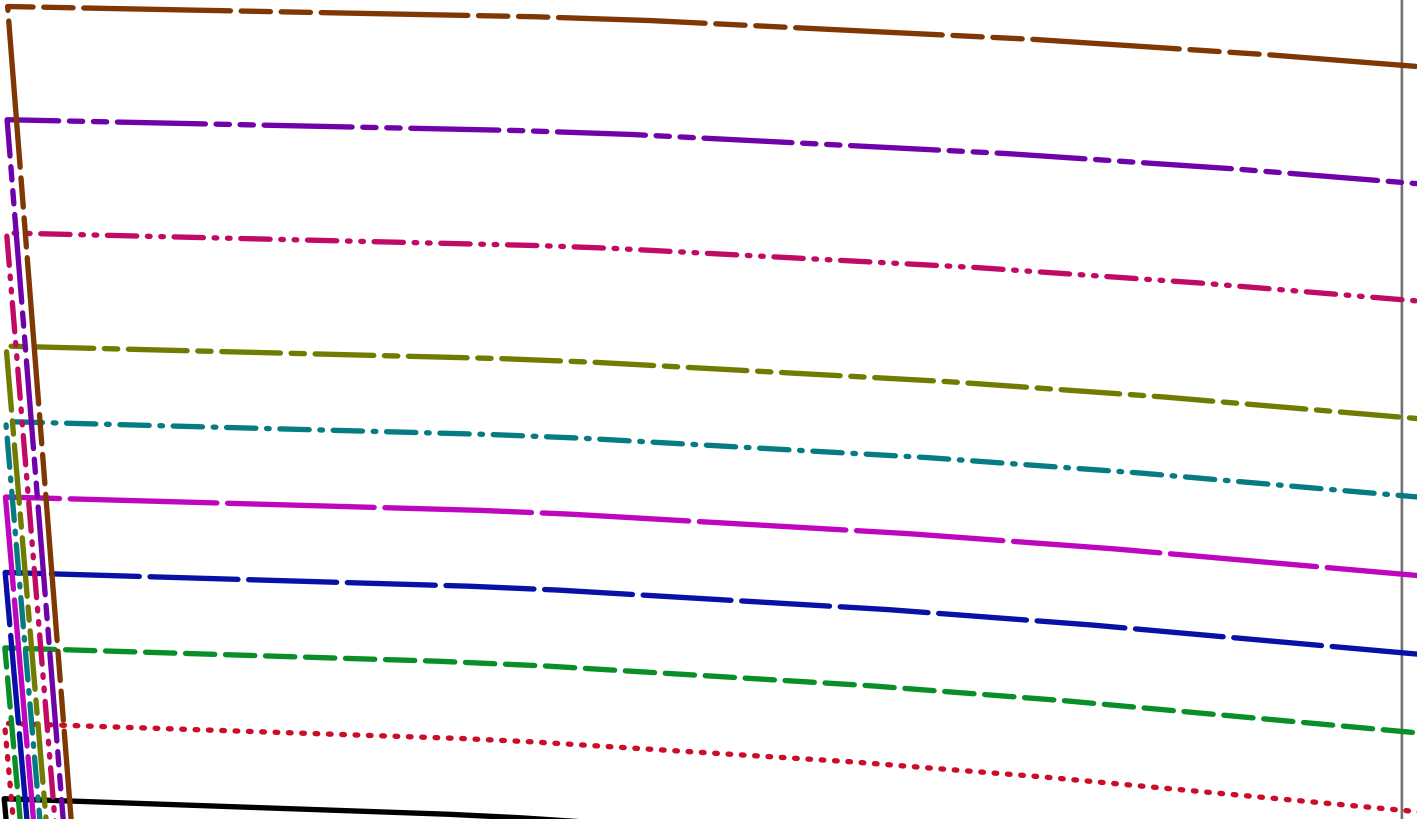
BACK DRESS
cut 2 mirrored



DRESS
d

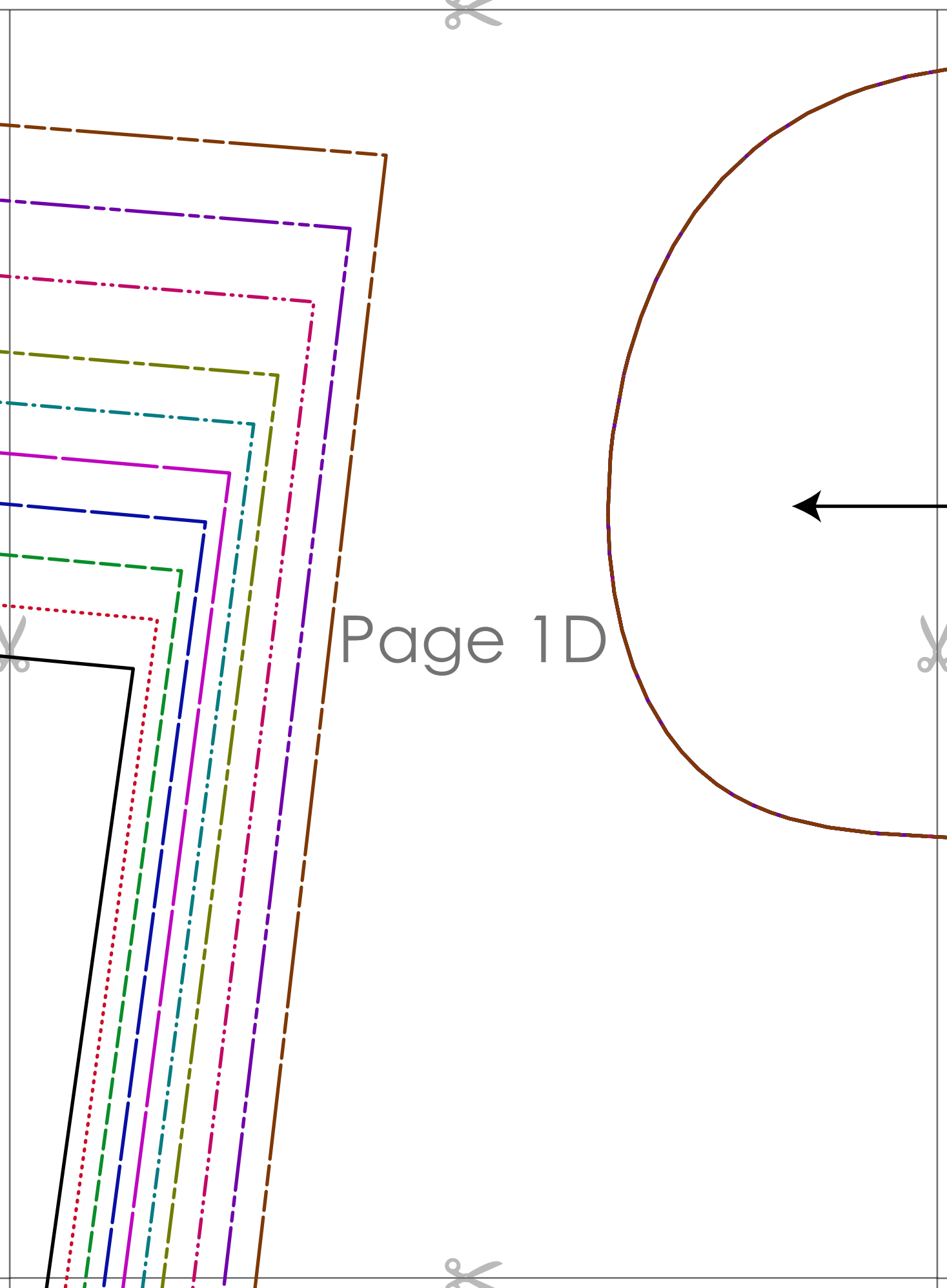
Page 1B





Page 1C





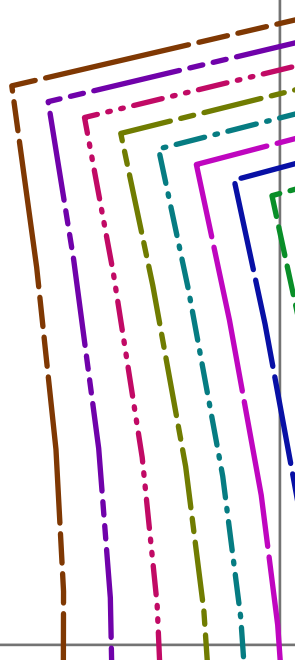
Page 1D



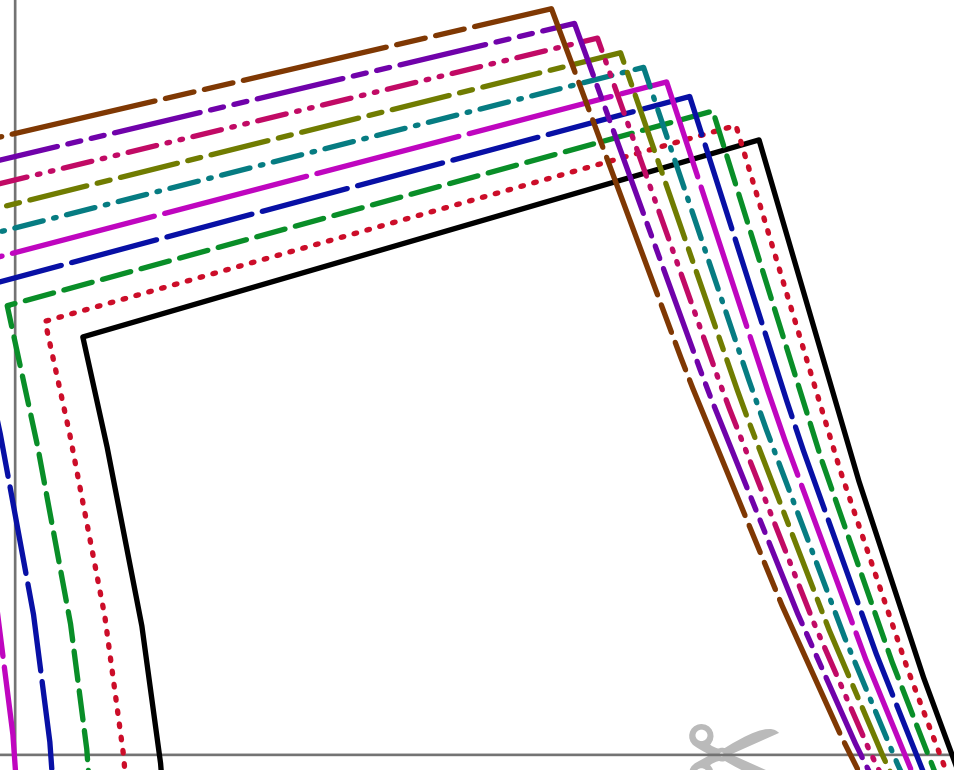
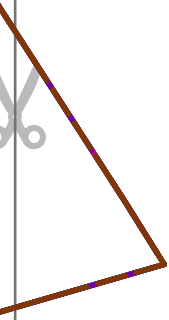
FLORA V NECK FLUTTER SLEEVE RUFFLE HEM DRESS
1cm (3/8 in) seam allowance included

~~SEAMS~~

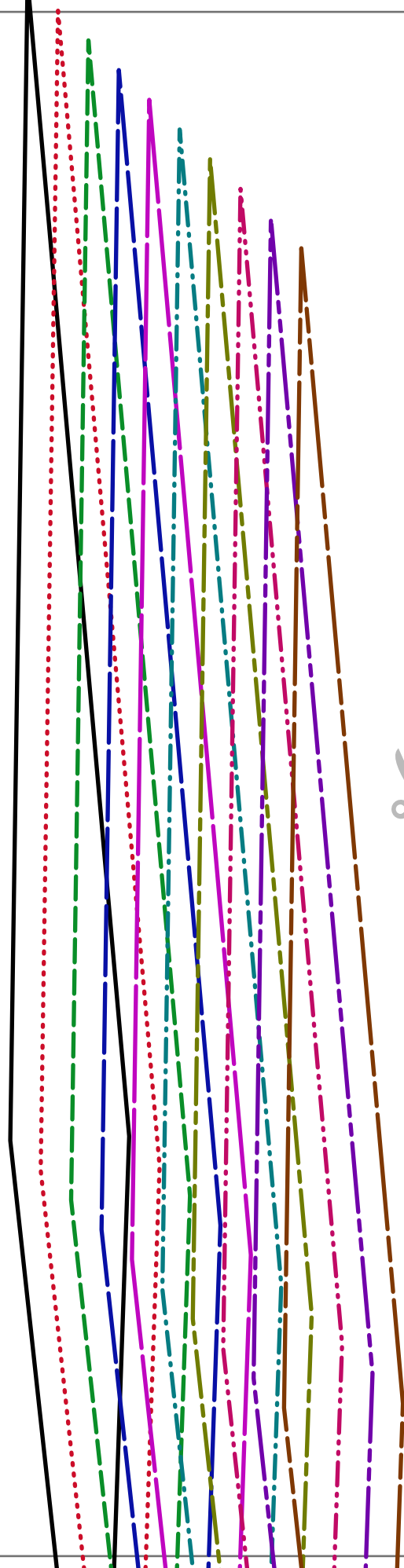
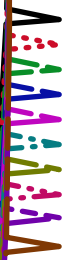
INSEAM POCKETS
cut 4 mirrored



Page 1F



Page 2A



Page 2B



Page 2C

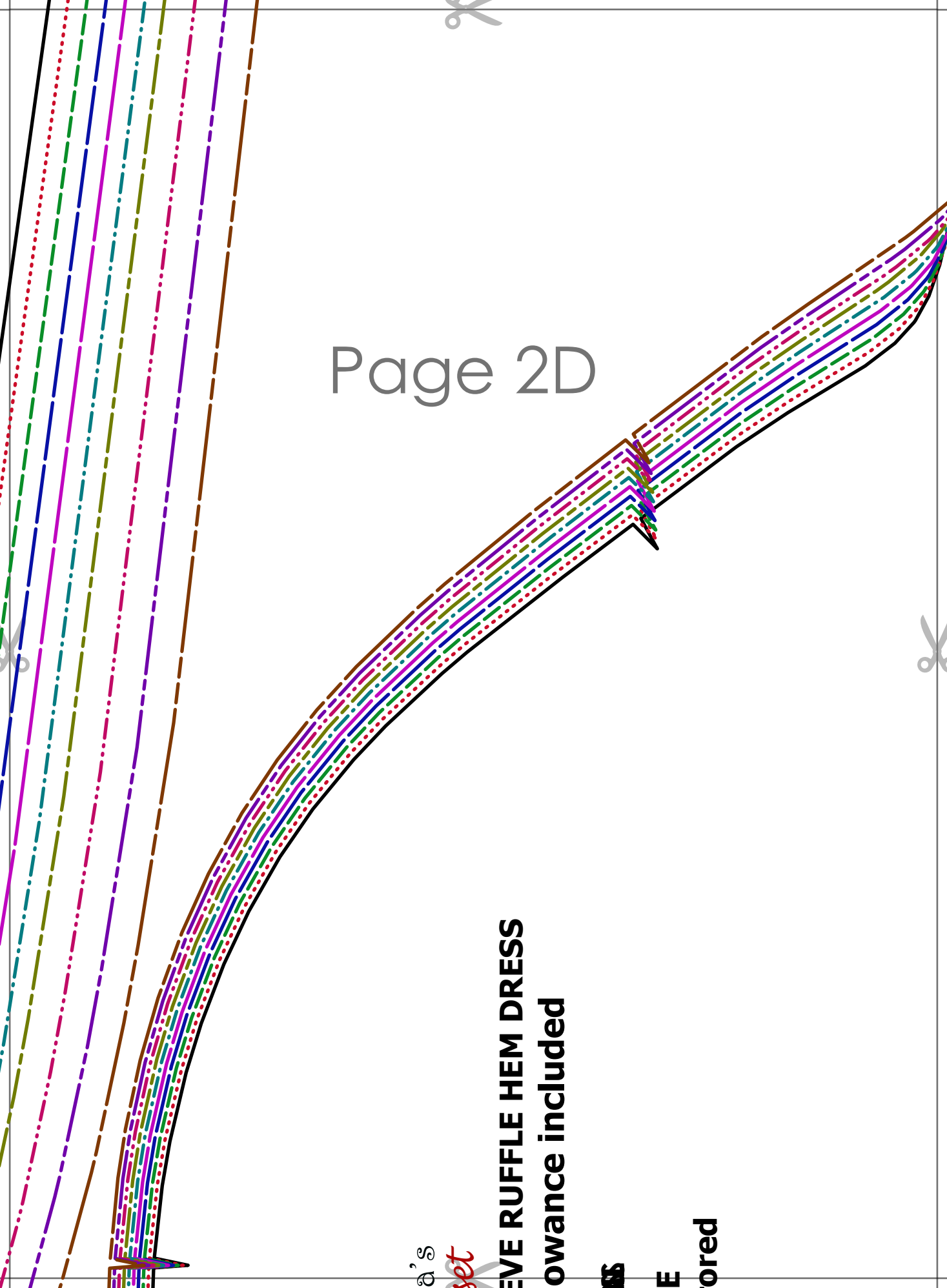
SIDE FRONT DRESS
cut 2 mirrored

~~STAY-INS~~

FLORA V NECK FLUTTER SLEEVE RUFFLE HEM DRESS
1cm (3/8 in) seam allowance included



Page 2D

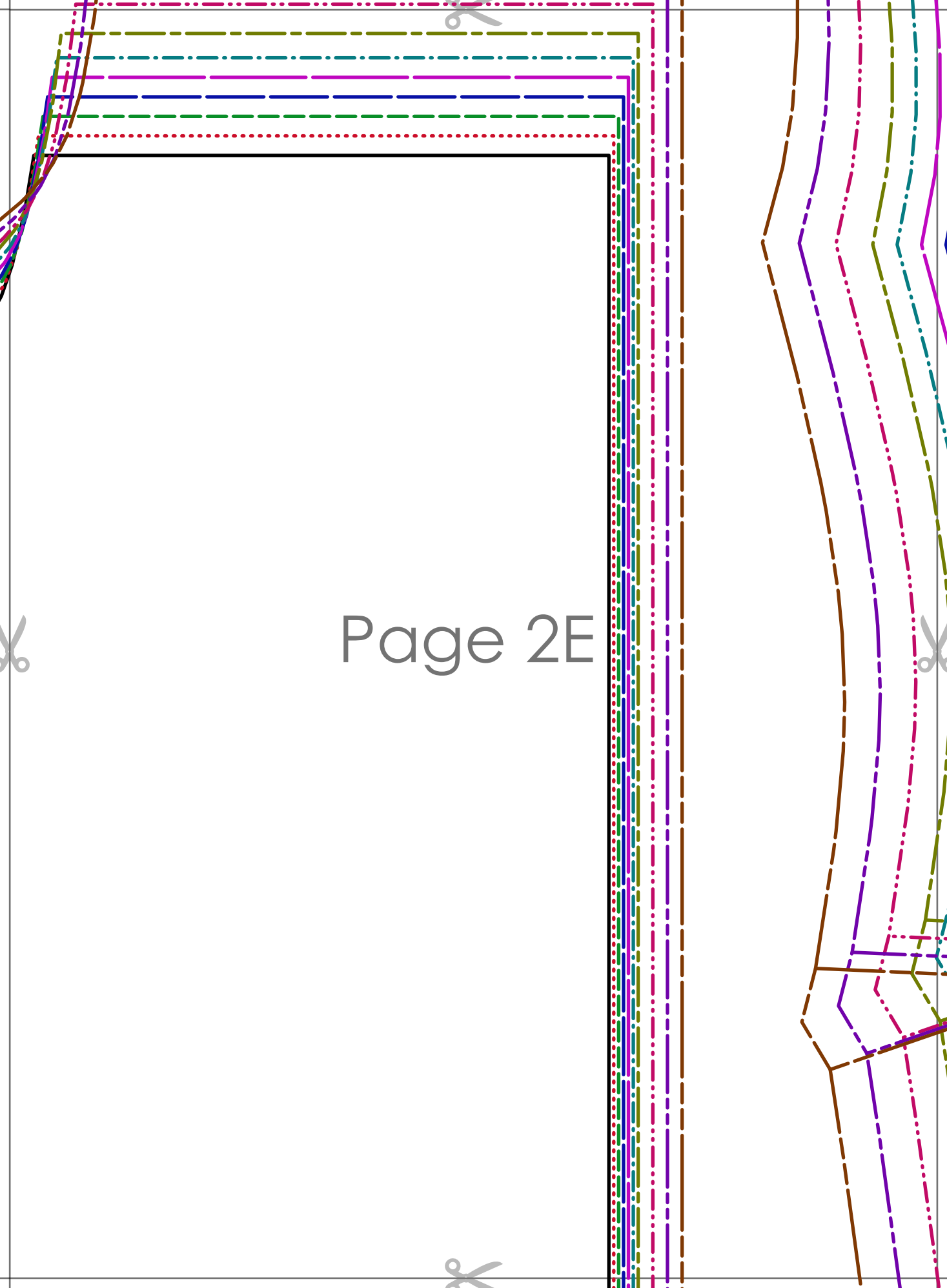


d's
set

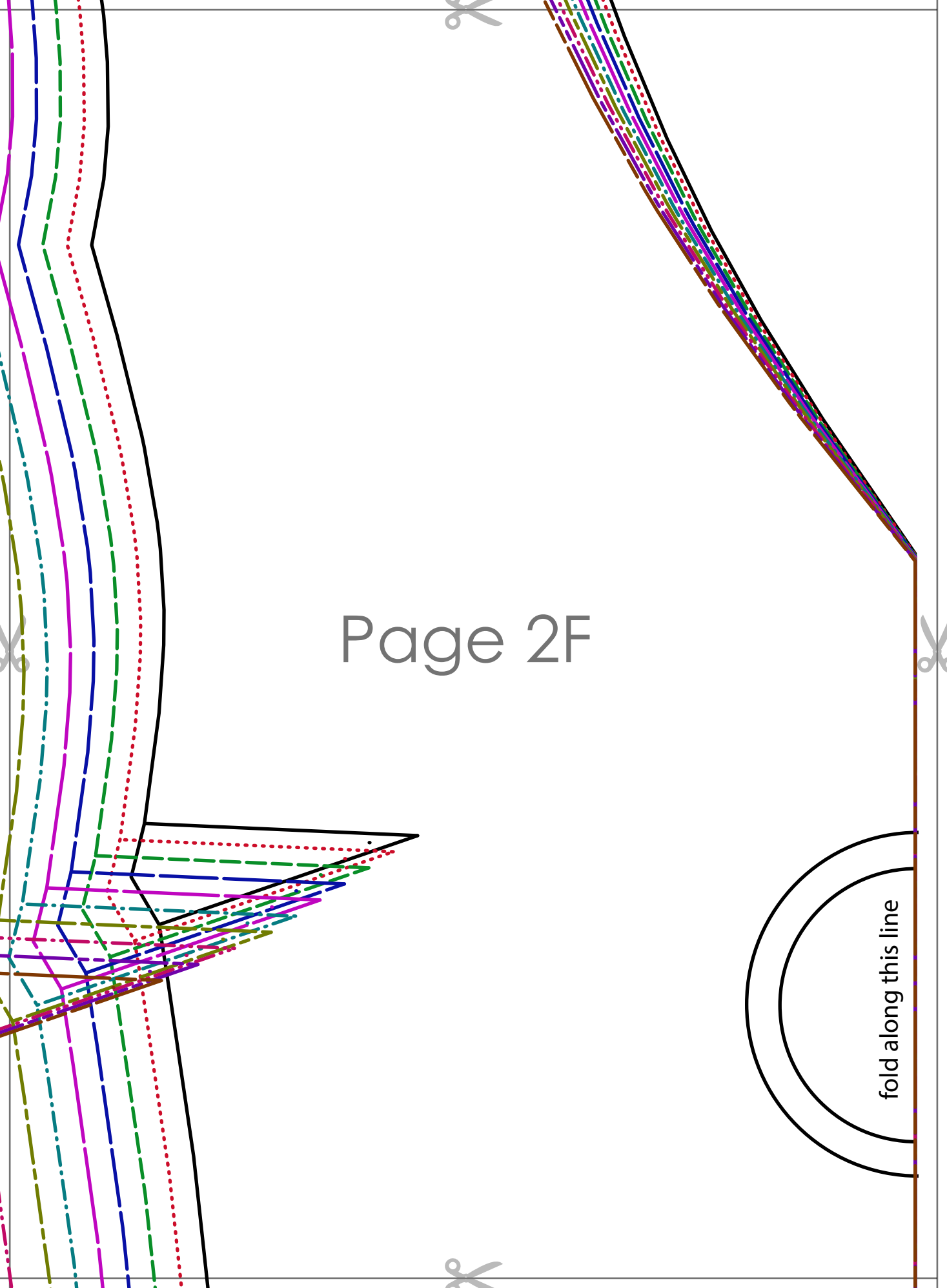
EVE RUFFLE HEM DRESS
allowance included

MS
E
ored

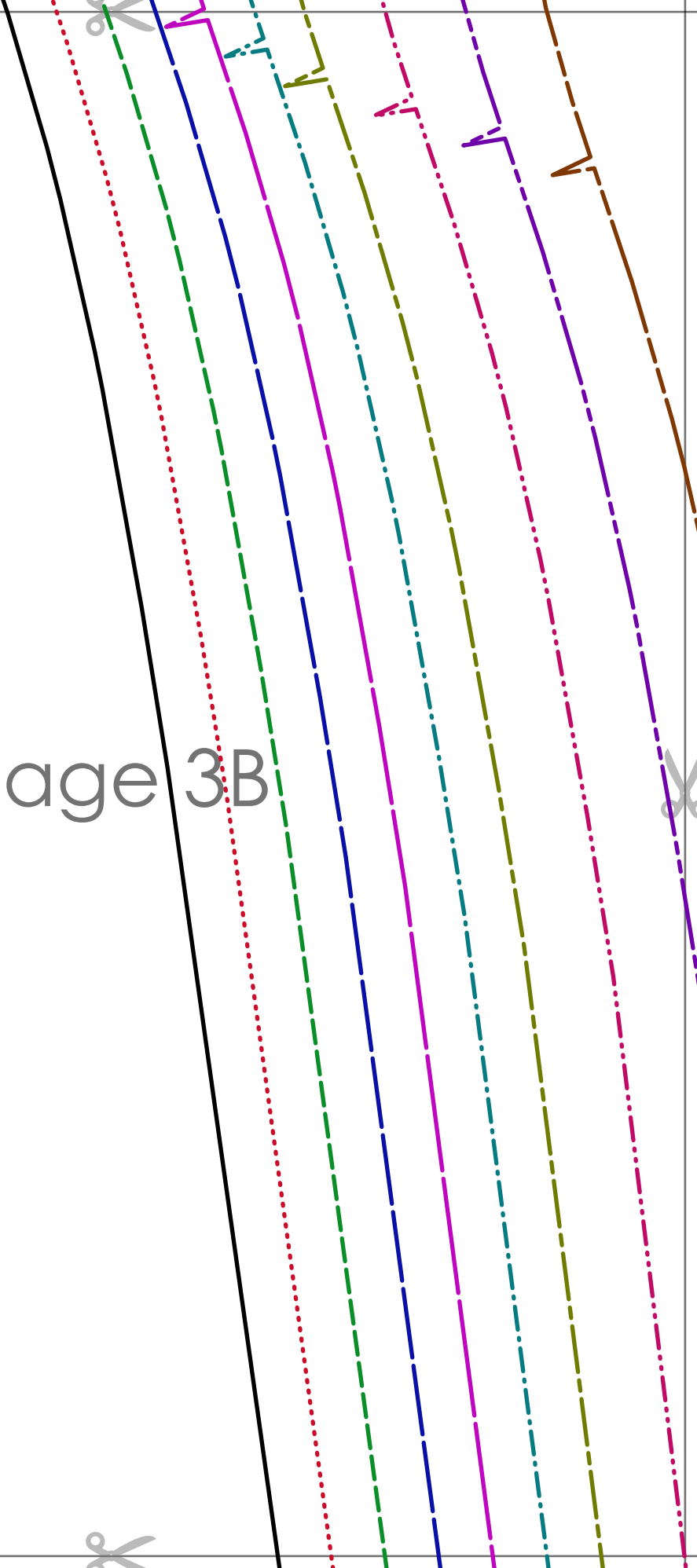
Page 2E



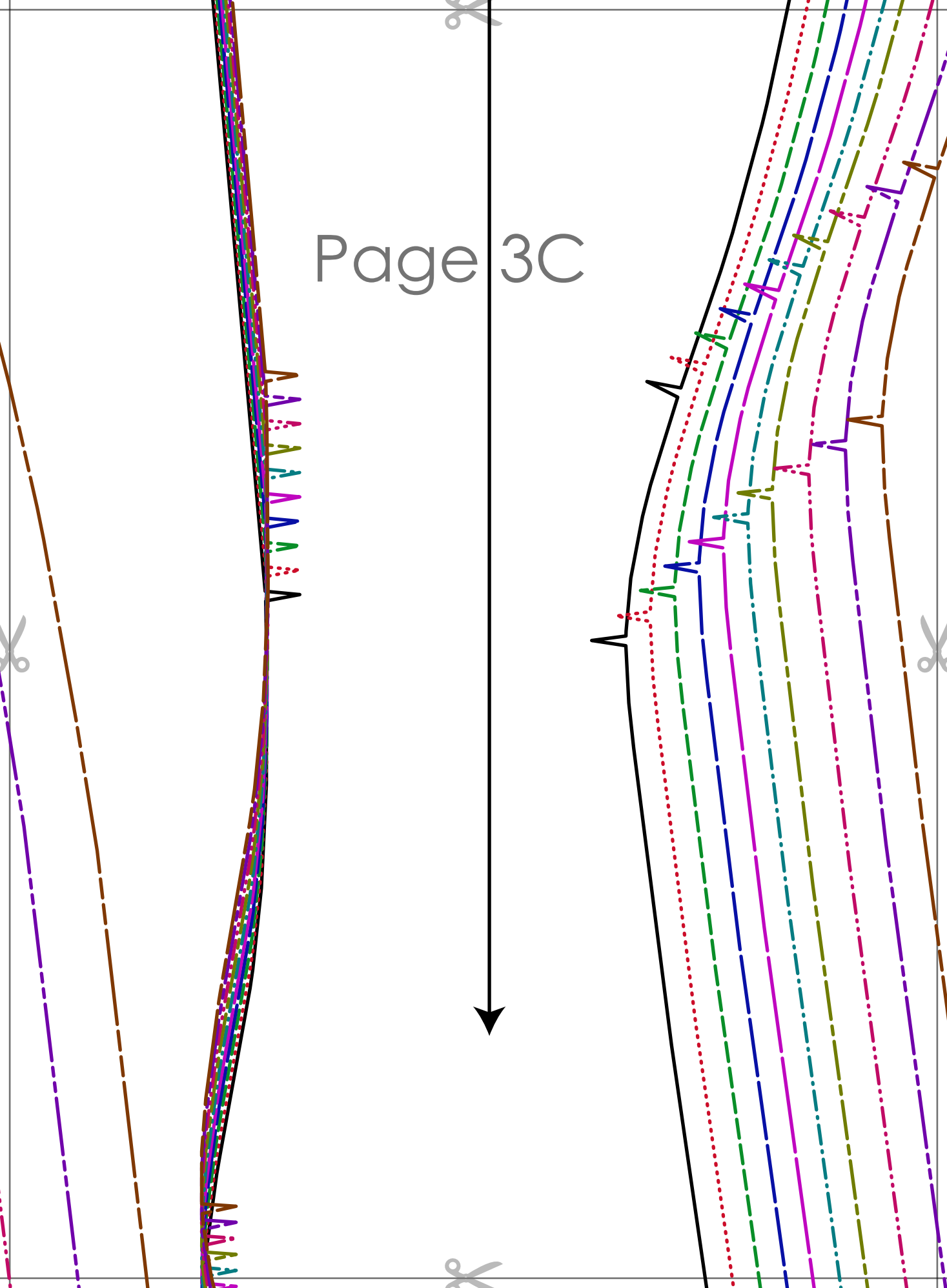
Page 2F



Page 3B



Page 3C





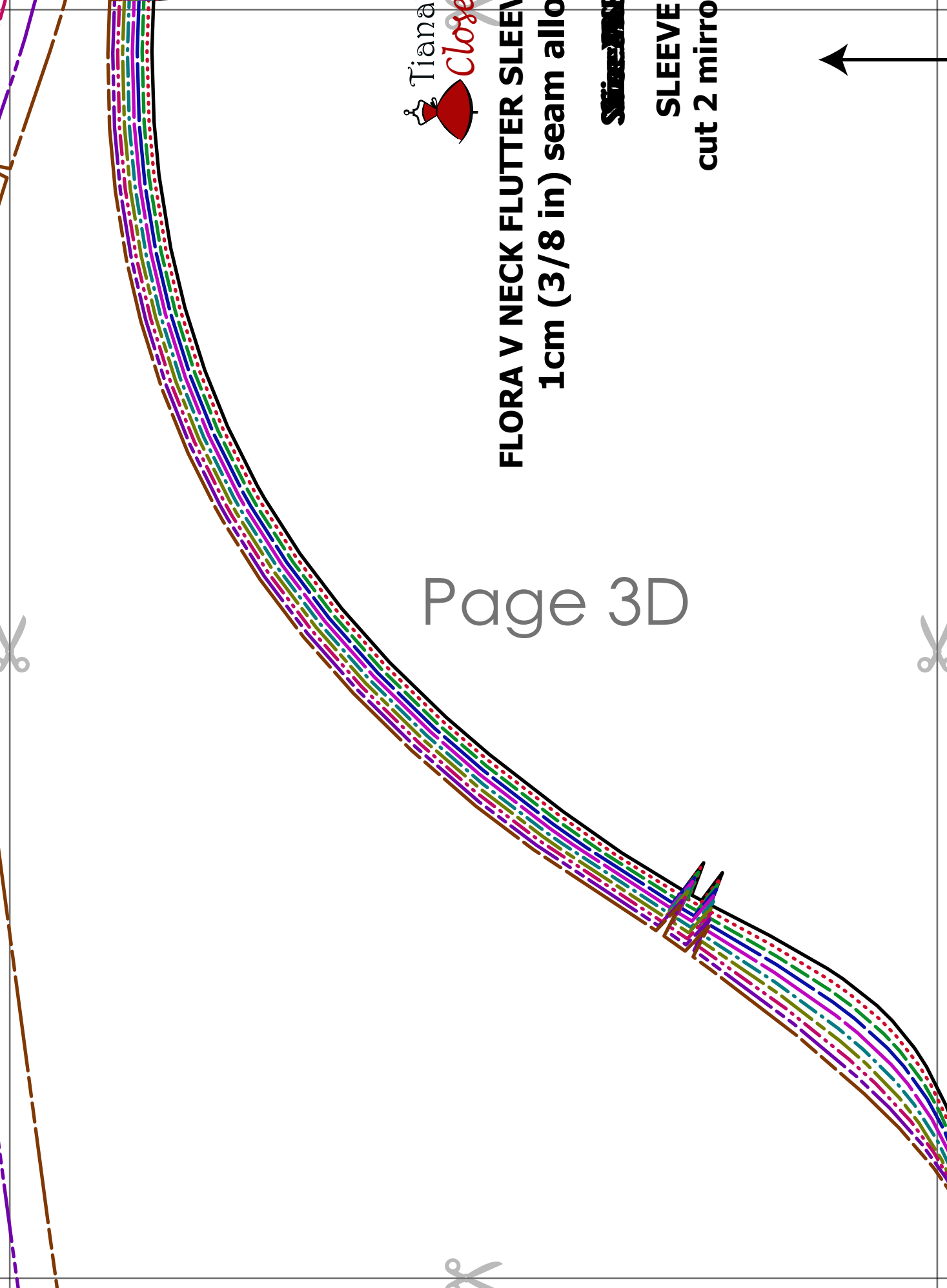
FLORA V NECK FLUTTER SLEEVE
1cm (3/8 in) seam allowance

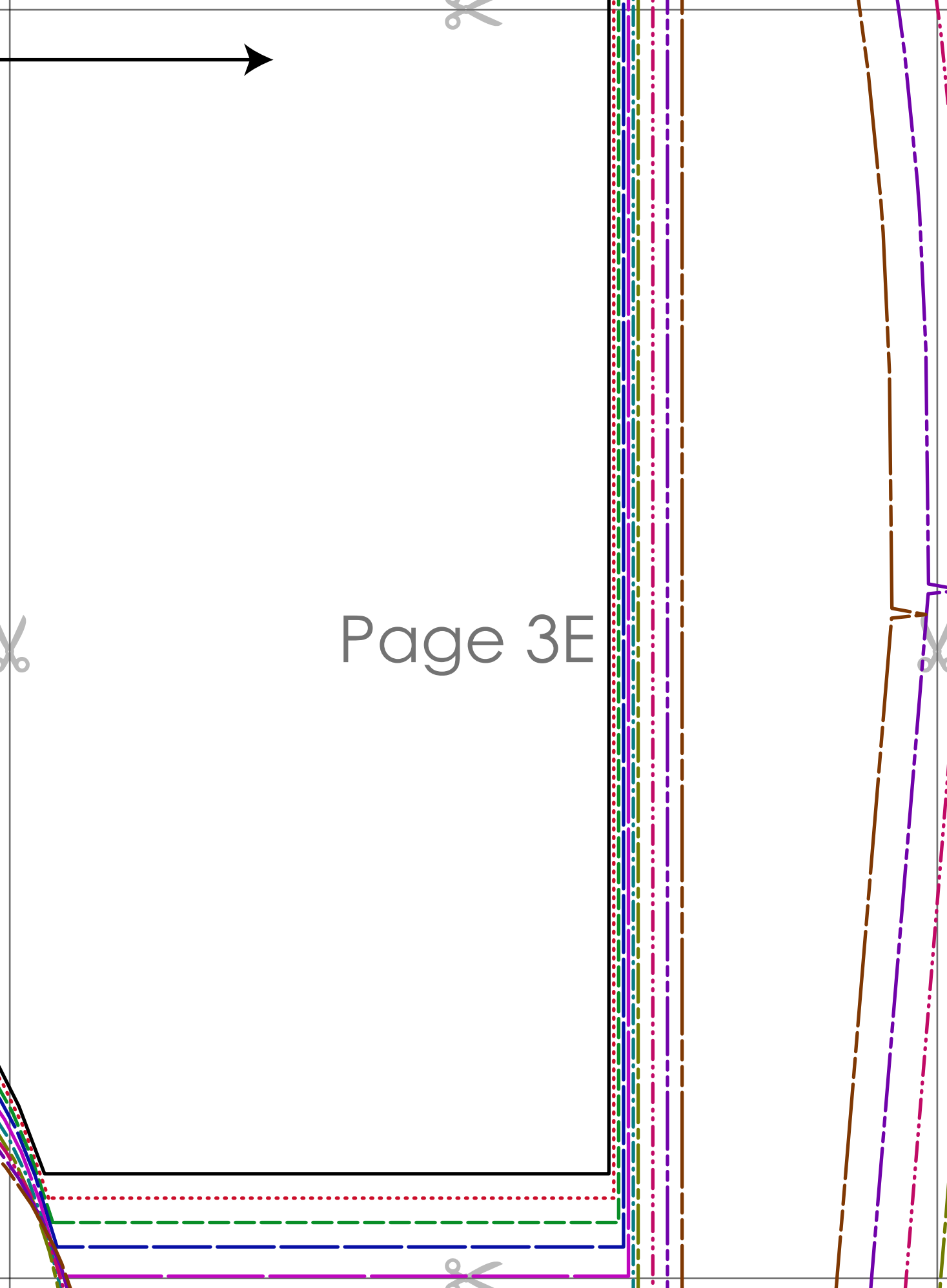
~~SLEEVE~~

SLEEVE
cut 2 mirror



Page 3D





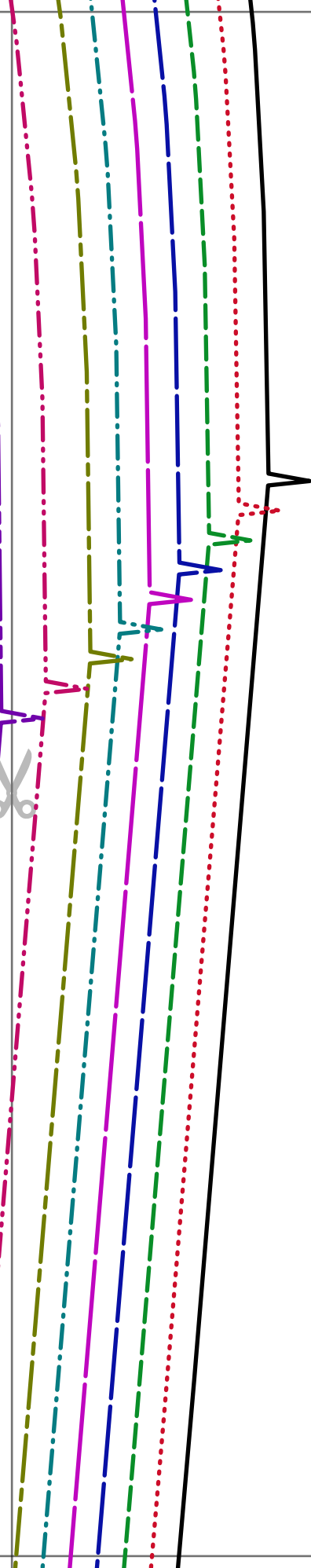
Page 3E



FLORA V NECK FLUTTER SLEEVE RUFFLE HEM DRESS
1cm (3/8 in) seam allowance included

~~Size 206~~

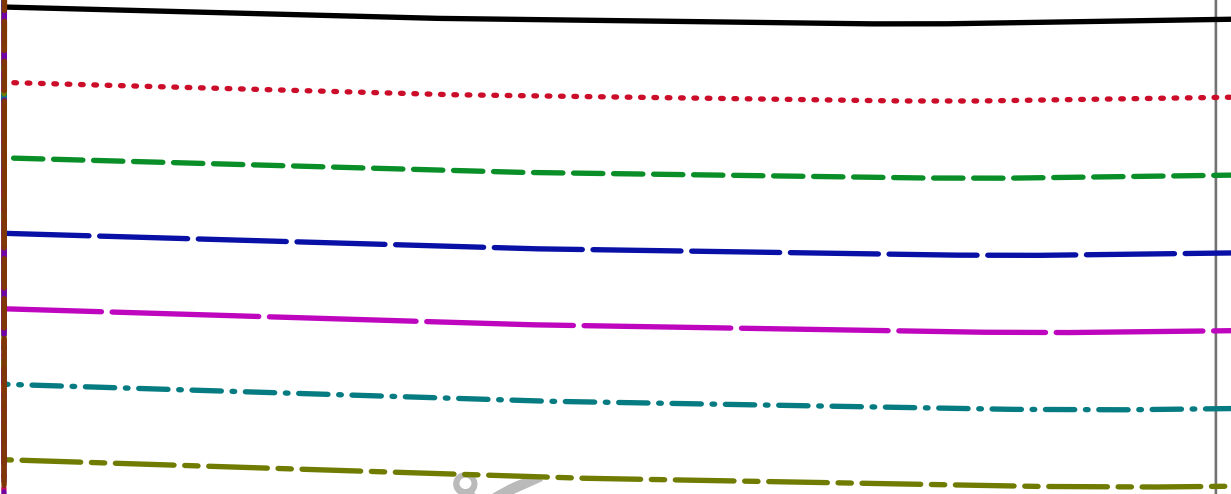
CENTER FRONT DRESS
cut 1 on the fold



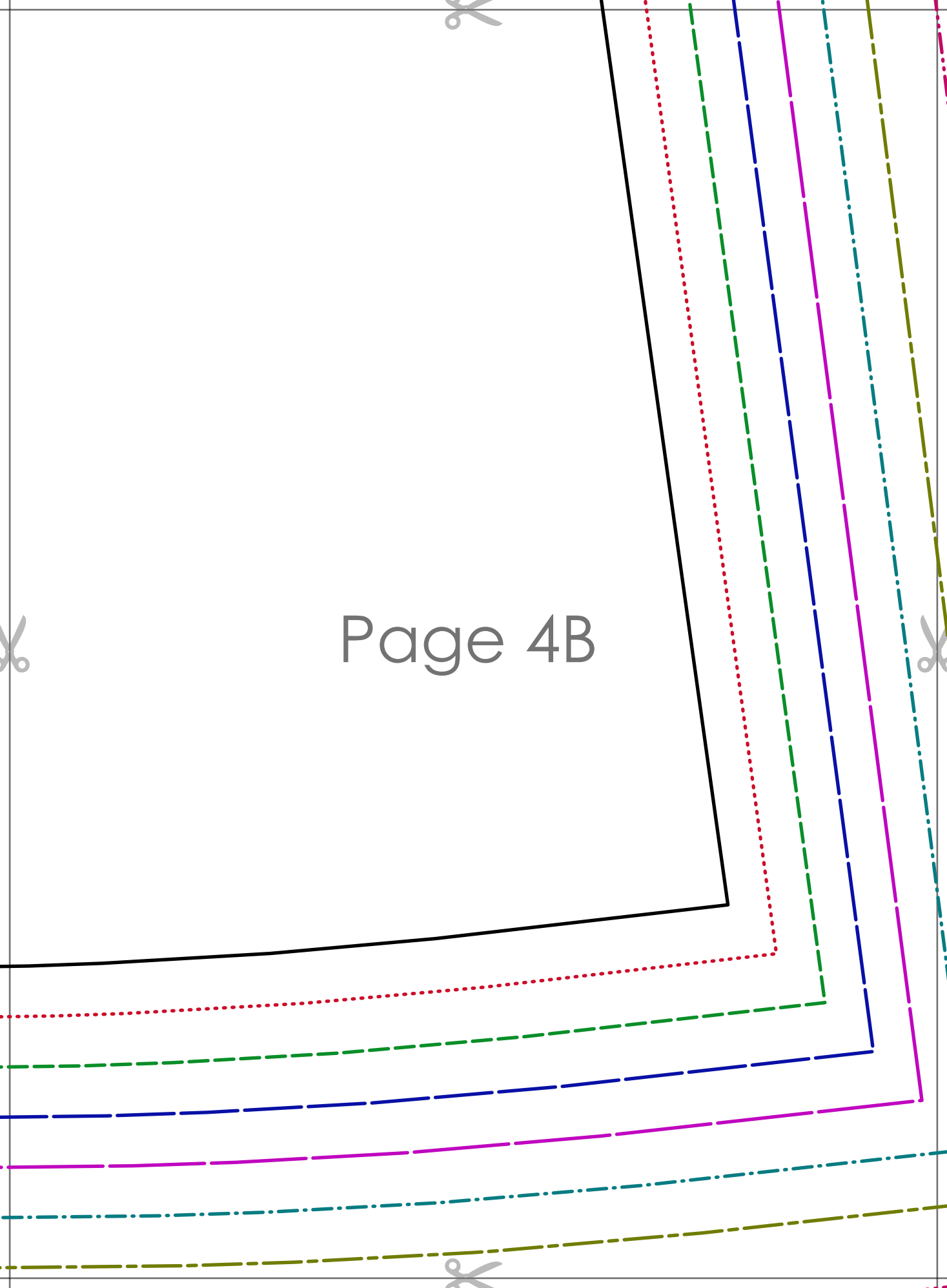
Page 3F

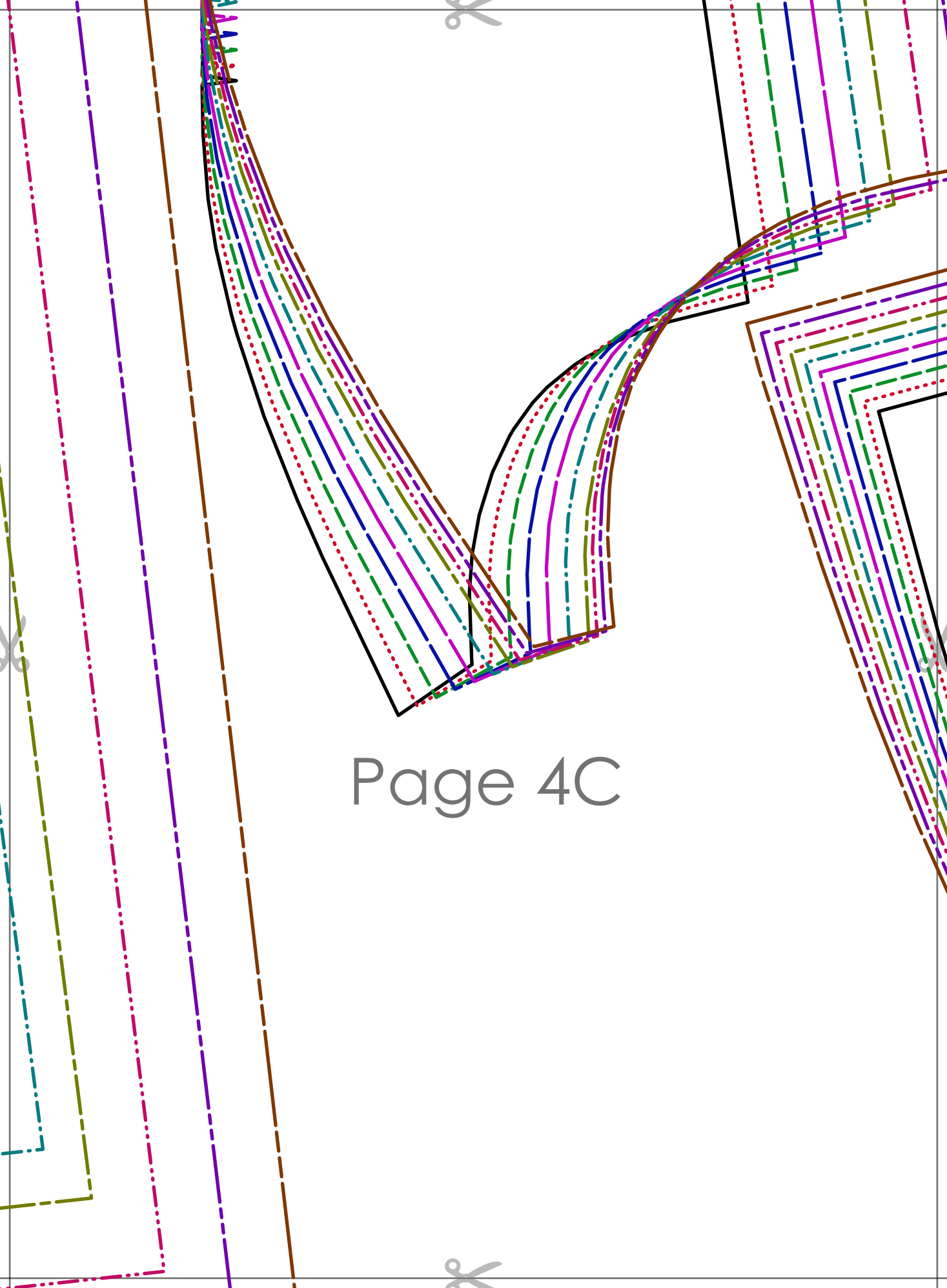


Page 4A

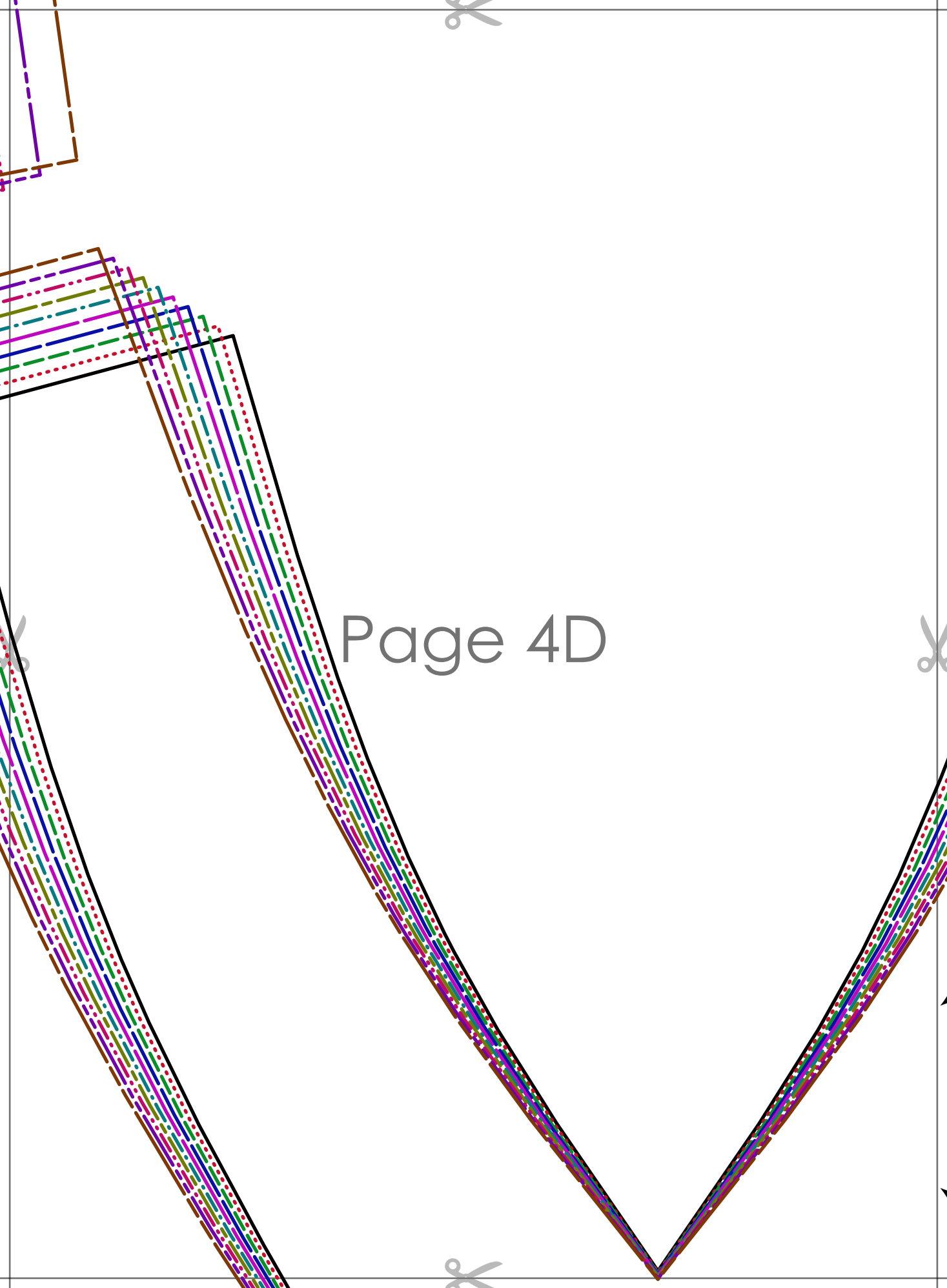


Page 4B

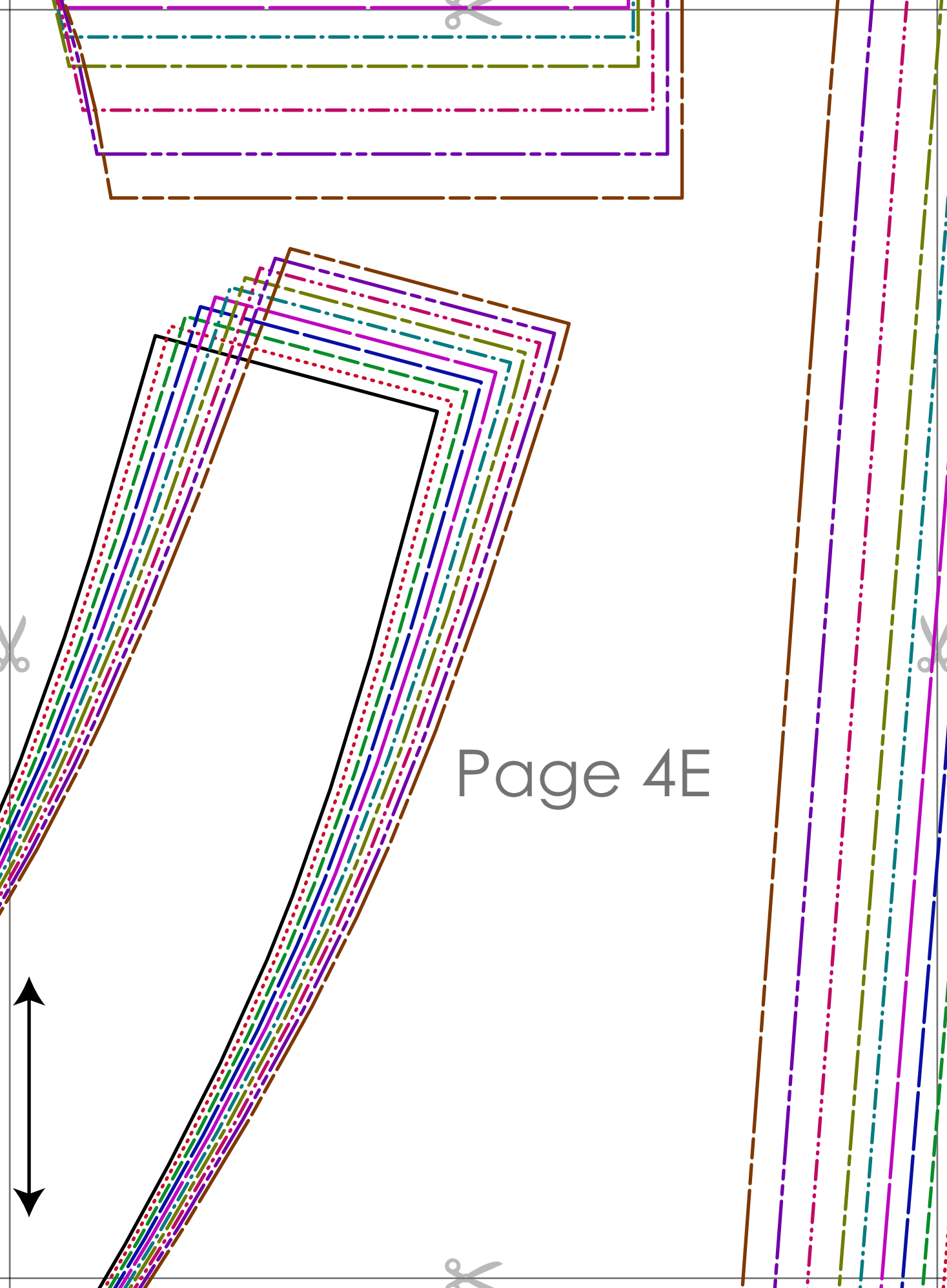




Page 4C

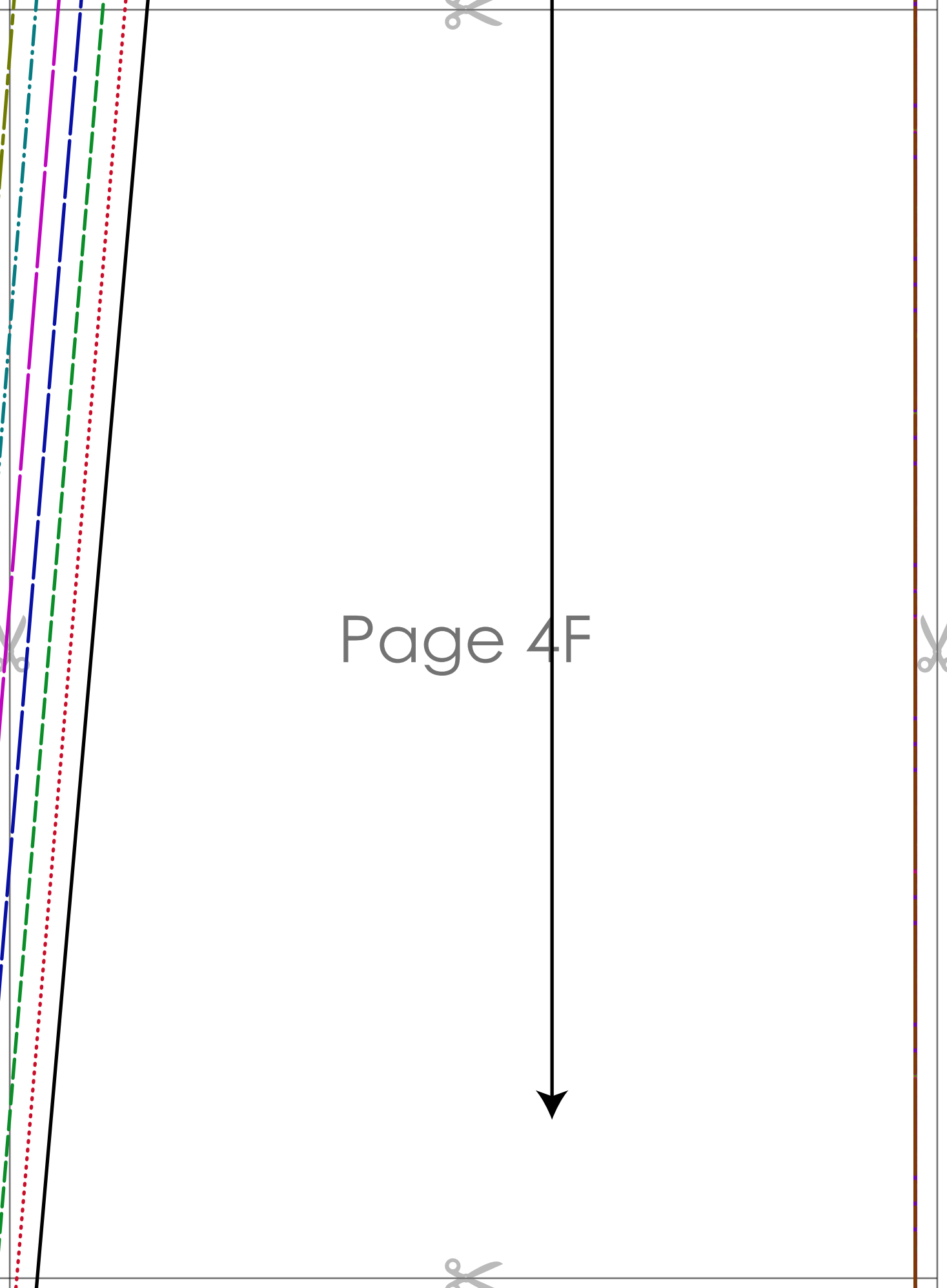


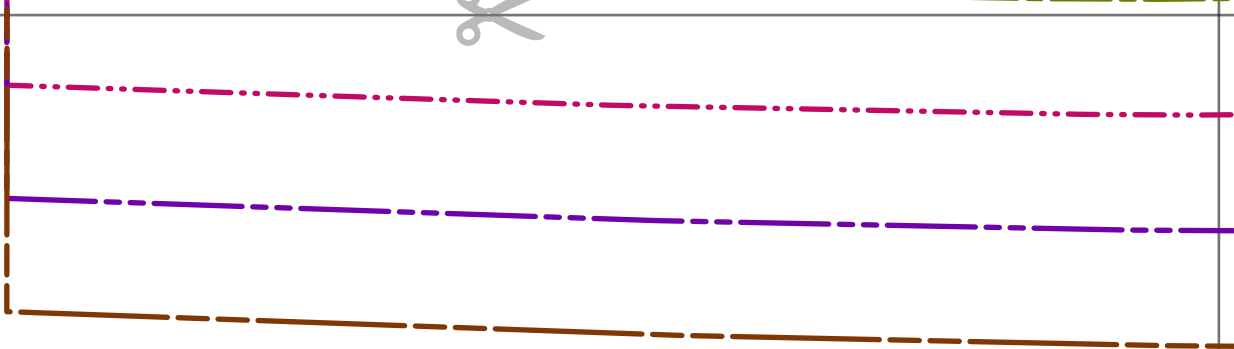
Page 4D



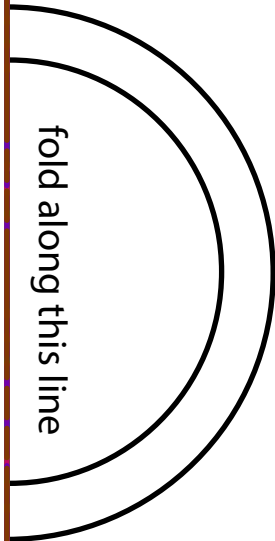
Page 4E

Page 4F



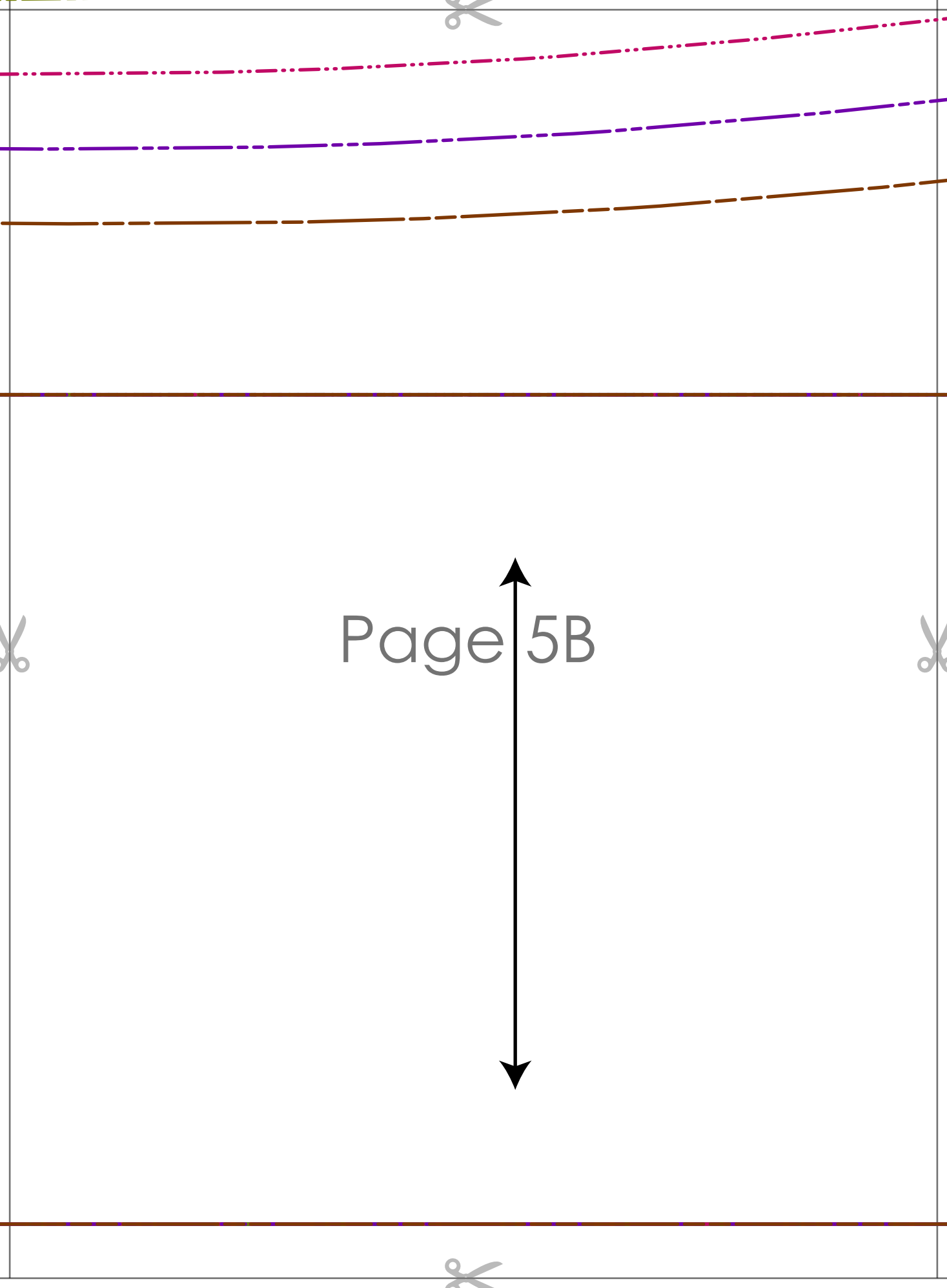


Page 5A



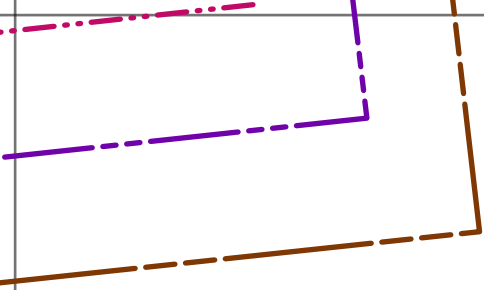
FLORA V NECK FLUTTER SLEEVE RUFFLE HEM DRESS
1cm (3/8 in) seam allowance included
~~STAY-INS~~
RUFFLE HEM
cut 2 on the fold



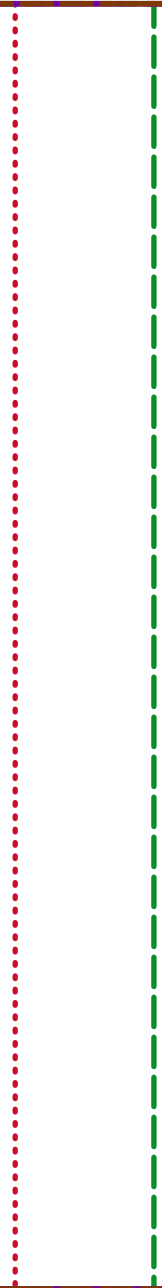


Page 5B





Page 5C





FLORA V NECK FLUTTER SLEEVE RUFFLE HEM DRESS
1cm (3/8 in) seam allowance included

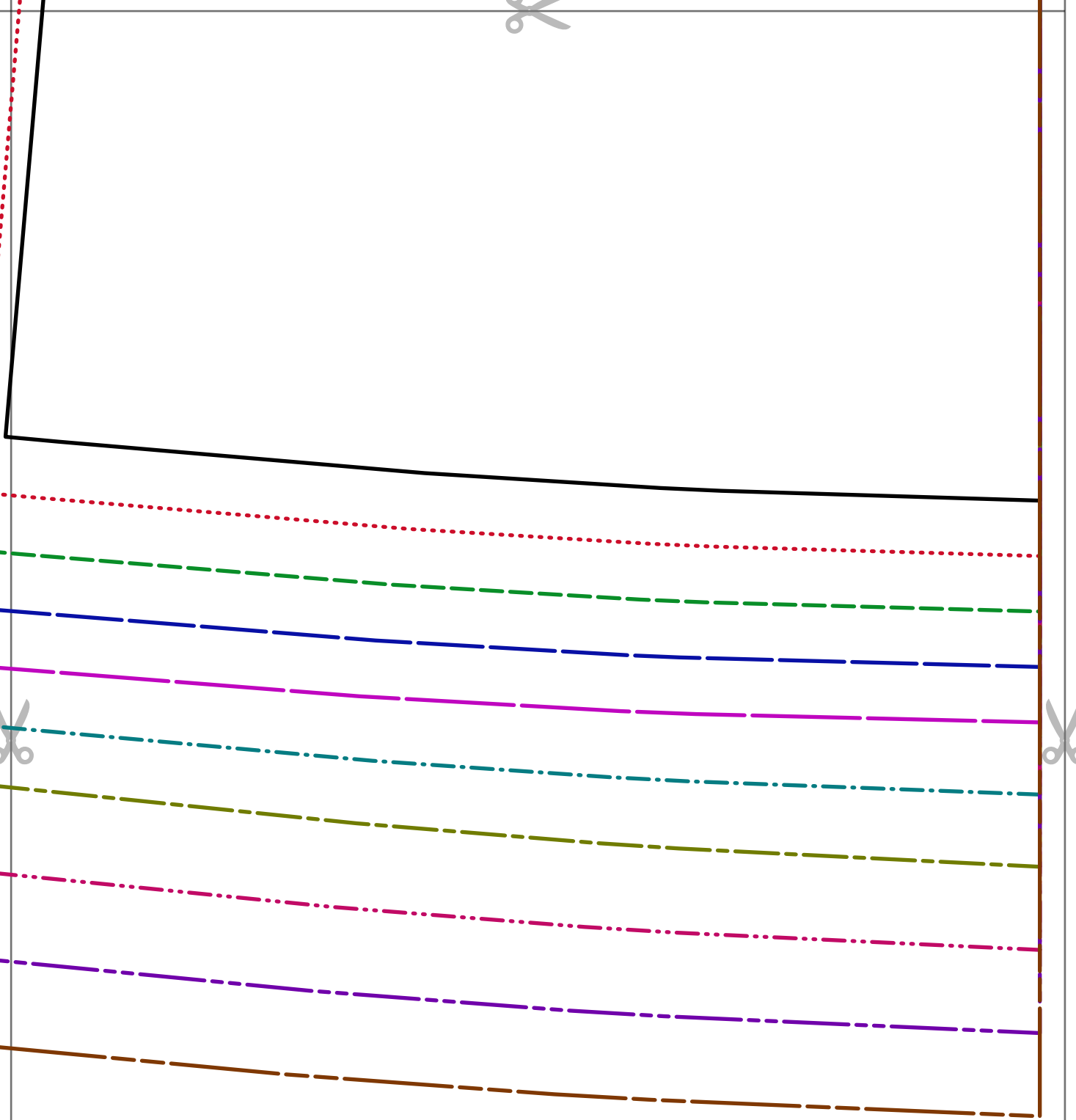
~~Size: XS~~

FRONT FACING
cut 1 main fabric + 1 fusible interfacing

Page 5D



FLORA V NECK FLUTTER SLEEVE RUFFLE HEM DRESS
1cm (3/8 in) seam allowance included
~~Sleeve~~
BACK FACING
cut 2 main fabric + 2 fusible interfacing (mirrored)



Page 5F