

PRINTING INSTRUCTIONS

- Tiana's Closet sewing patterns are made in Layered PDF format, which means all sizes are saved in one file and can be shown or hidden. It is recommended to use Adobe Acrobat Reader (paid version on Mac OS, free on Windows) or Foxit PDF Reader (free, works on Windows only) to read the file correctly. In order to choose the desired size(s), go to Layers tab of your PDF reader, uncheck all boxes except for the desired size(s) and the box Print for all sizes.

- When printing the pattern, go to Print settings, in the tab Scale choose Custom scale: 100% (or Scaling: None or Actual Size) to print true to size. Note: some computers print smaller than true size even when you choose 100% scale, so you will have to adjust the scale to a little larger than 100% and measure the test square until you get the true size using the test rulers

- Always print the first page of the file and measure to avoid waste of paper.

- After printing the pattern, cut the pages along the lines with scissors icon, align and tape the pages according to their sequences. For example, pages 1A, 1B, 1C, 1D... are line up in one row from left to right, pages 1A, 2A, 3A, 3B... are lined up in one column from up to down.

- You can find photo instruction for printing sewing patterns on Tiana's Closet website:

<https://tianscloset.com/index.php/how-to-print-tianas-closet-patterns/>

SIZE TABLE

WOMEN'S CLOTHING SIZE

- Sizing is based on body measurements.

- If between sizes, size up for woven fabric, size down for knit fabric.

Unit: centimeter

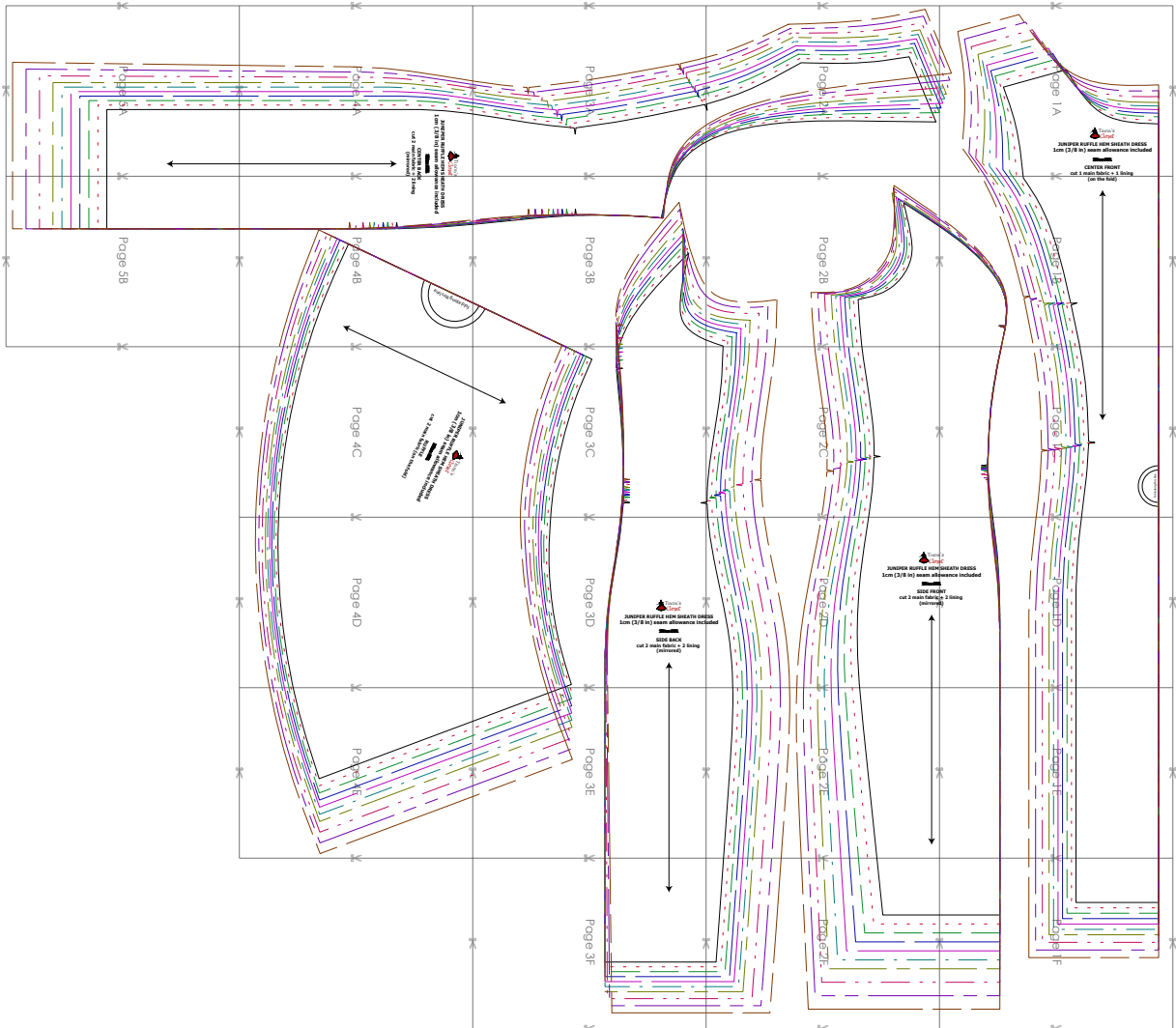
Size	XXS	XS	S	M	L	XL	XXL	3XL	4XL	5XL
Bust	80	84	88	92	96	100	104	110	116	122
Waist	60	64	68	72	76	80	84	90	96	102
Hip	88	92	96	100	104	108	112	118	124	130
Cross shoulder	35	36	37	38	39	40	41	42.5	44	45.5

Unit: inch

Size	XXS	XS	S	M	L	XL	XXL	3XL	4XL	5XL
Bust	31.5	33.1	34.6	36.2	37.8	39.4	40.9	43.3	45.7	48.0
Waist	23.6	25.2	26.8	28.3	29.9	31.5	33.1	35.4	37.8	40.2
Hip	34.6	36.2	37.8	39.4	40.9	42.5	44.1	46.5	48.8	51.2
Cross shoulder	13.8	14.2	14.6	15.0	15.4	15.7	16.1	16.7	17.3	17.9

For more ideas and free sewing patterns, visit <http://tianscloset.com>

PATTERN LAYOUT

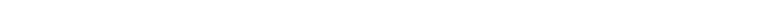


LEGEND

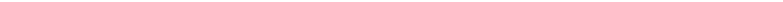
SIZE XXS



SIZE XS



SIZE S



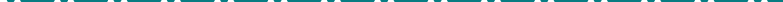
SIZE M



SIZE L



SIZE XL



SIZE XXL



SIZE 3XL

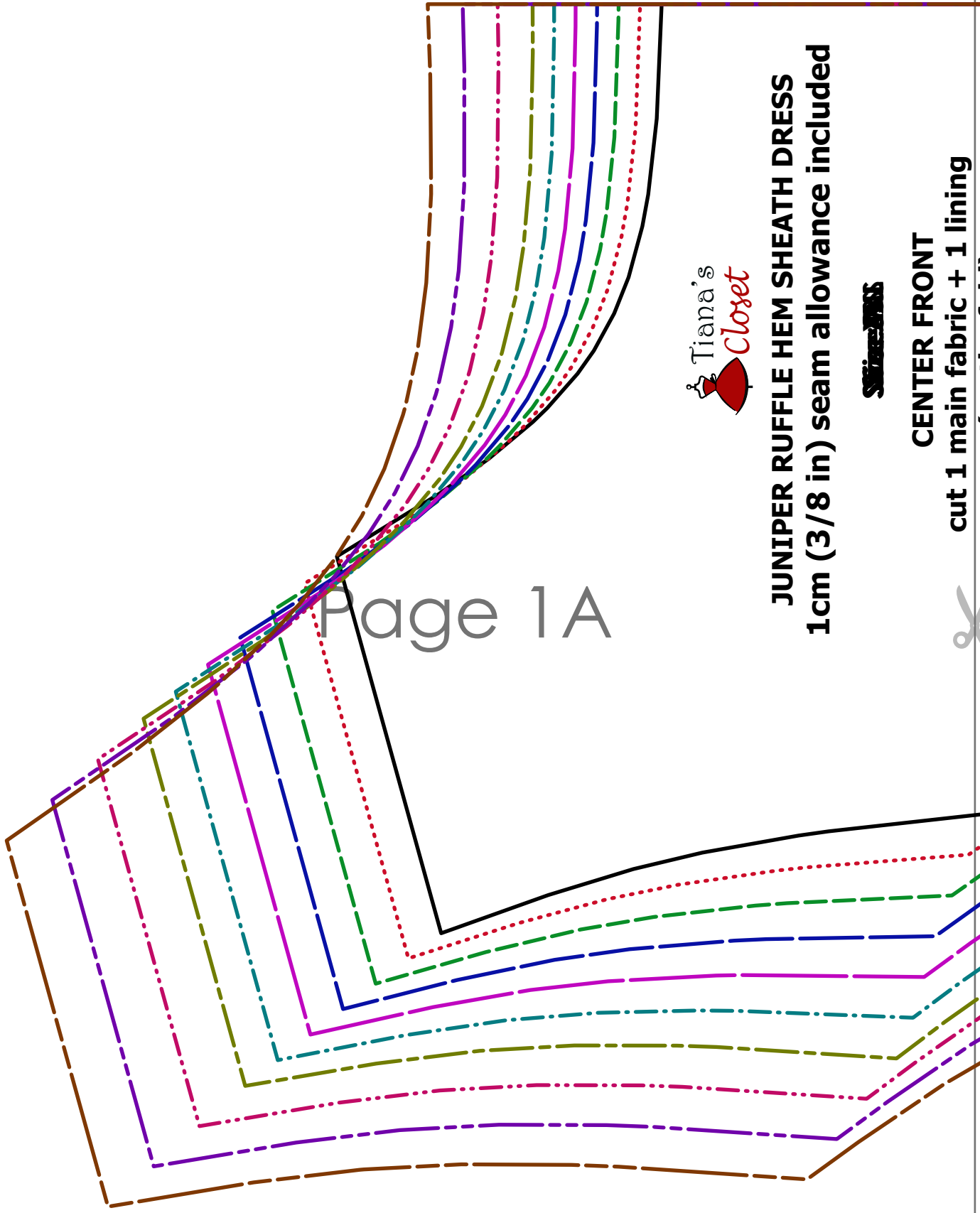


SIZE 4XL



SIZE 5XL





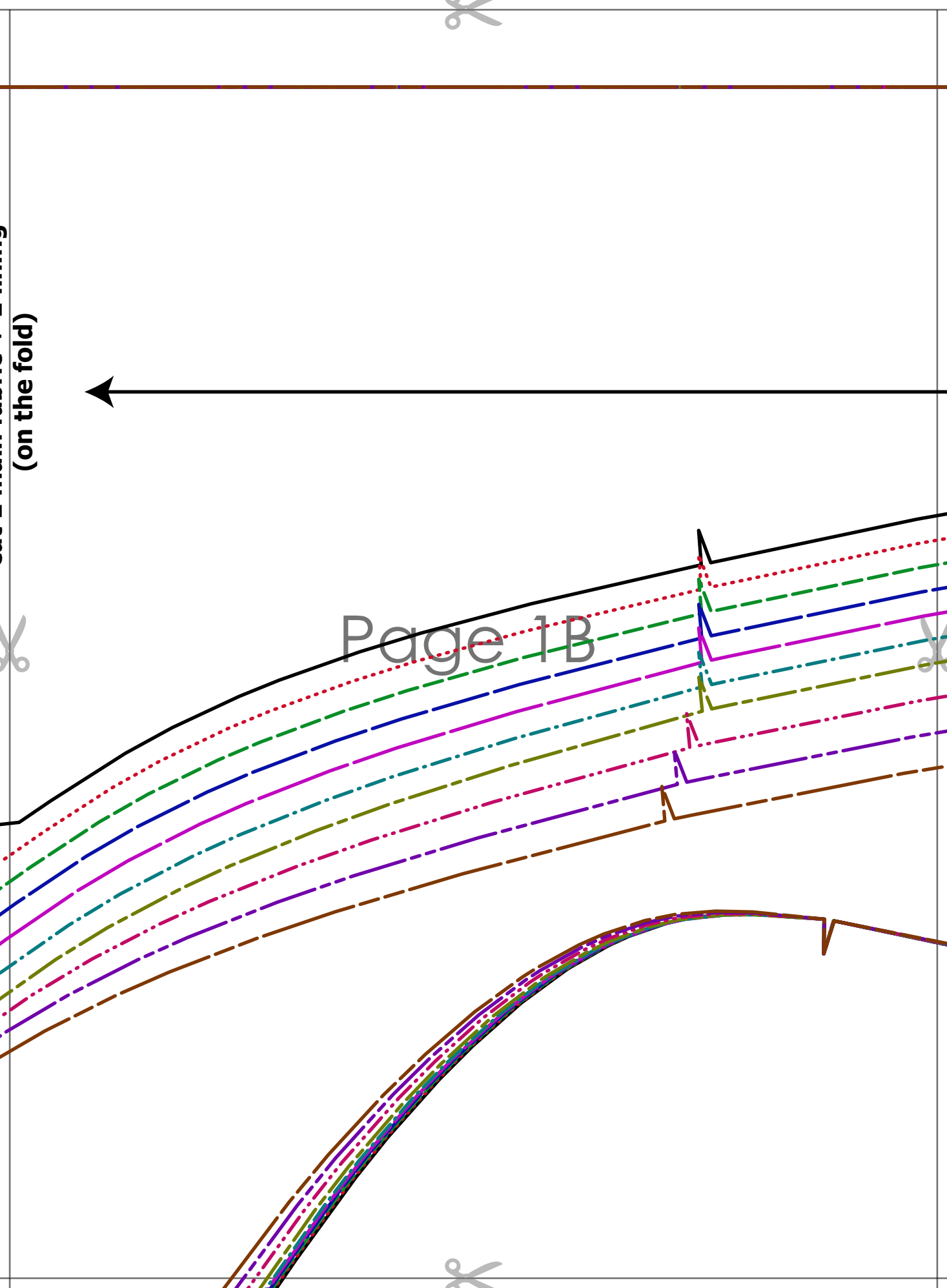
Page 1A



JUNIPER RUFFLE HEM SHEATH DRESS
1cm (3/8 in) seam allowance included



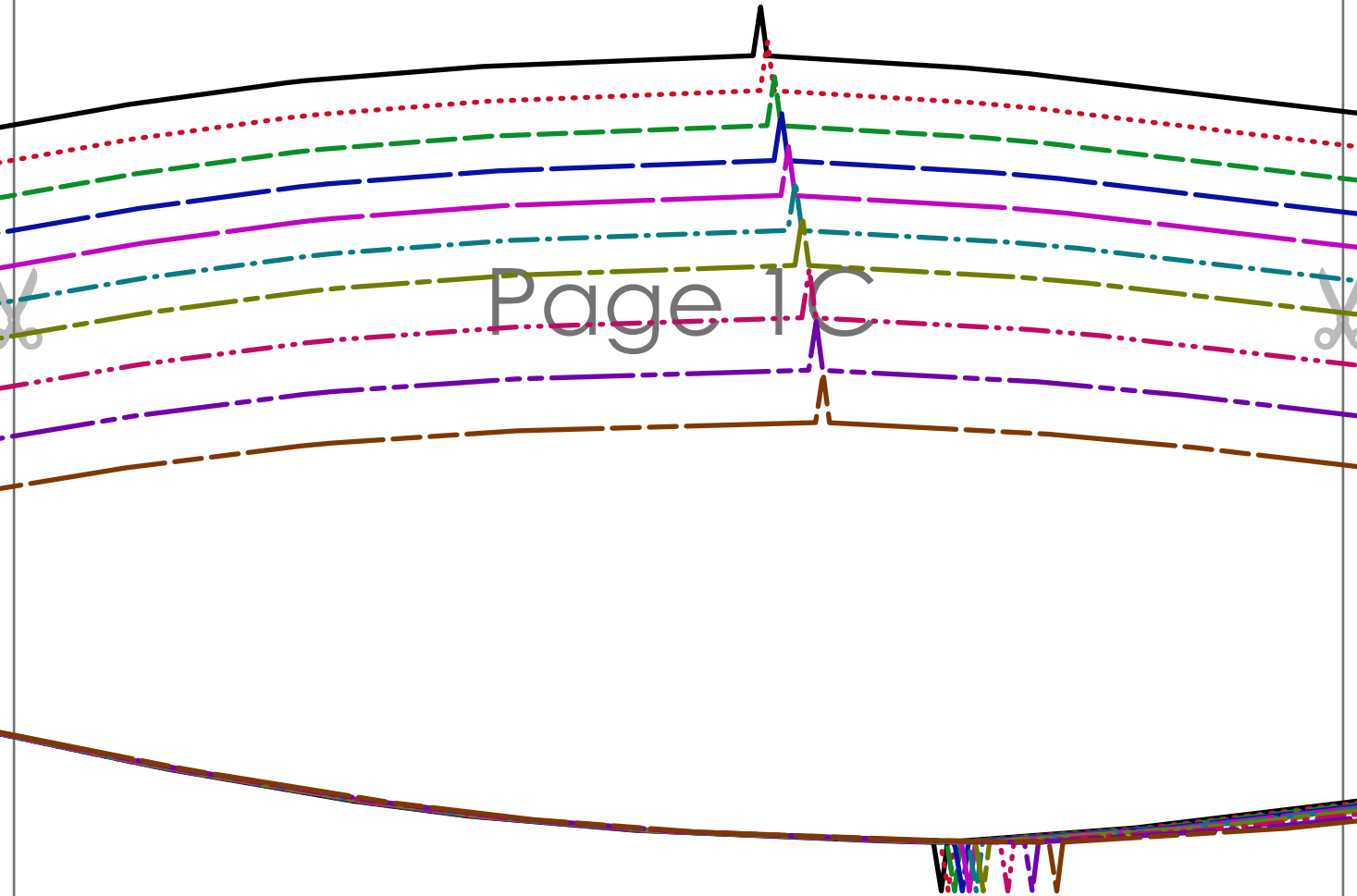
CENTER FRONT
cut 1 main fabric + 1 lining



(on the fold)

Page 1B

fold along this line



Page 1C



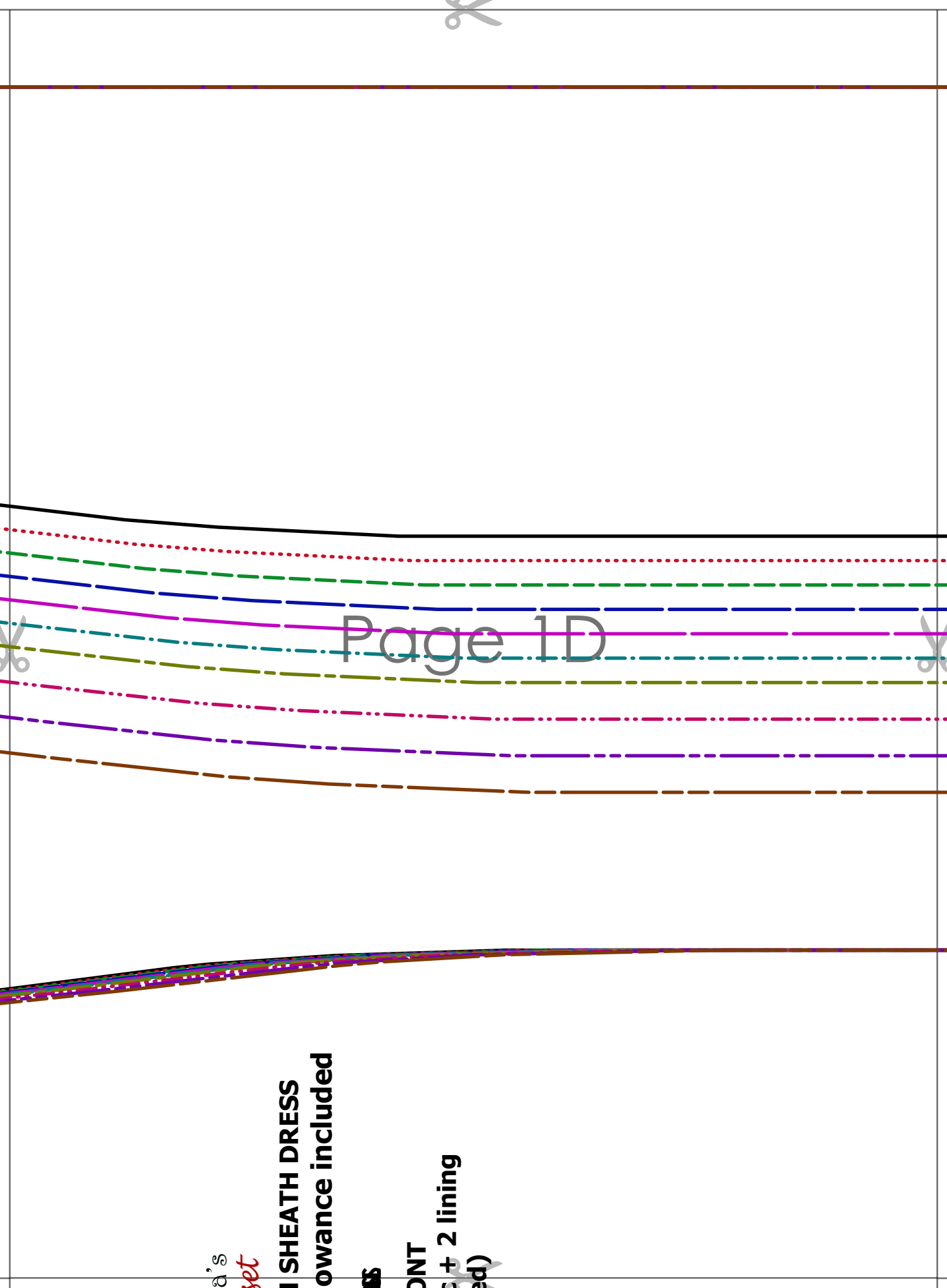
d's
bet

**1 SHEATH DRESS
allowance included**

SS

**DNT
(+ 2 lining
ed)**

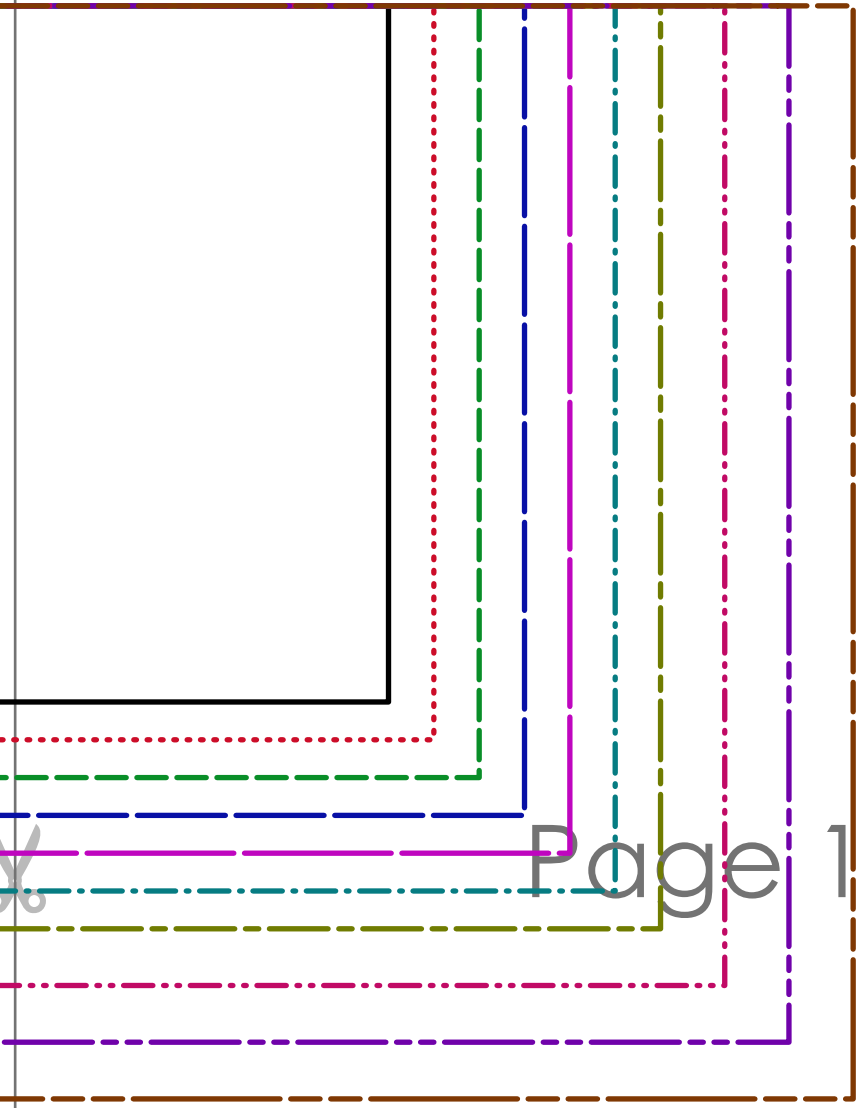
Page 1D



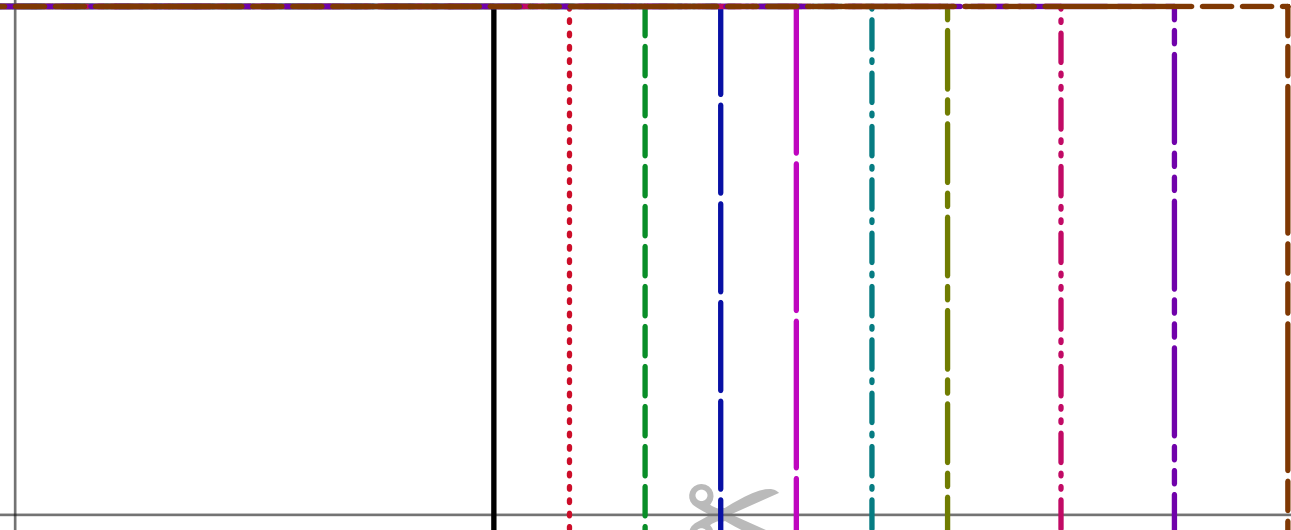


Page 1E





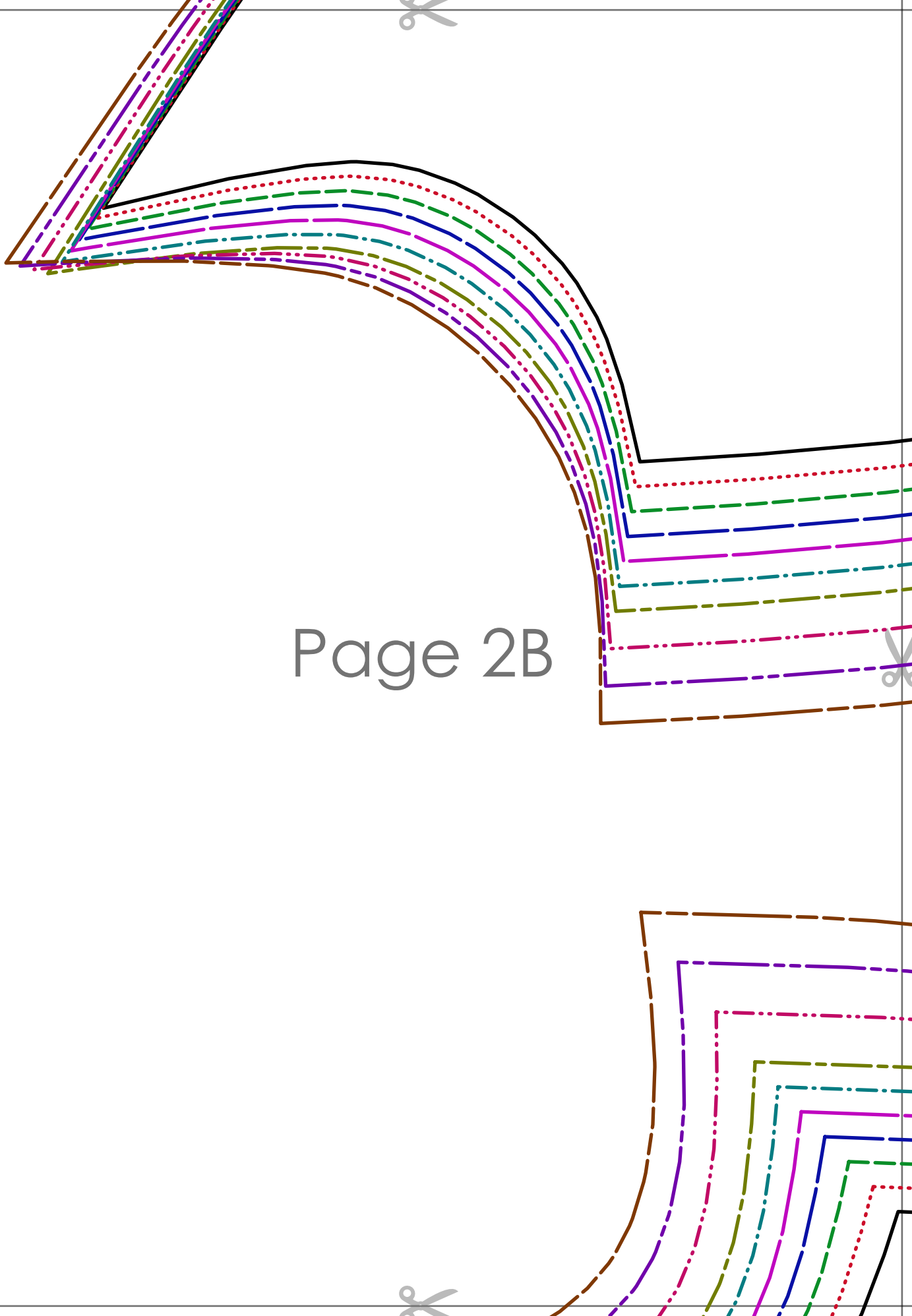
Page 1F

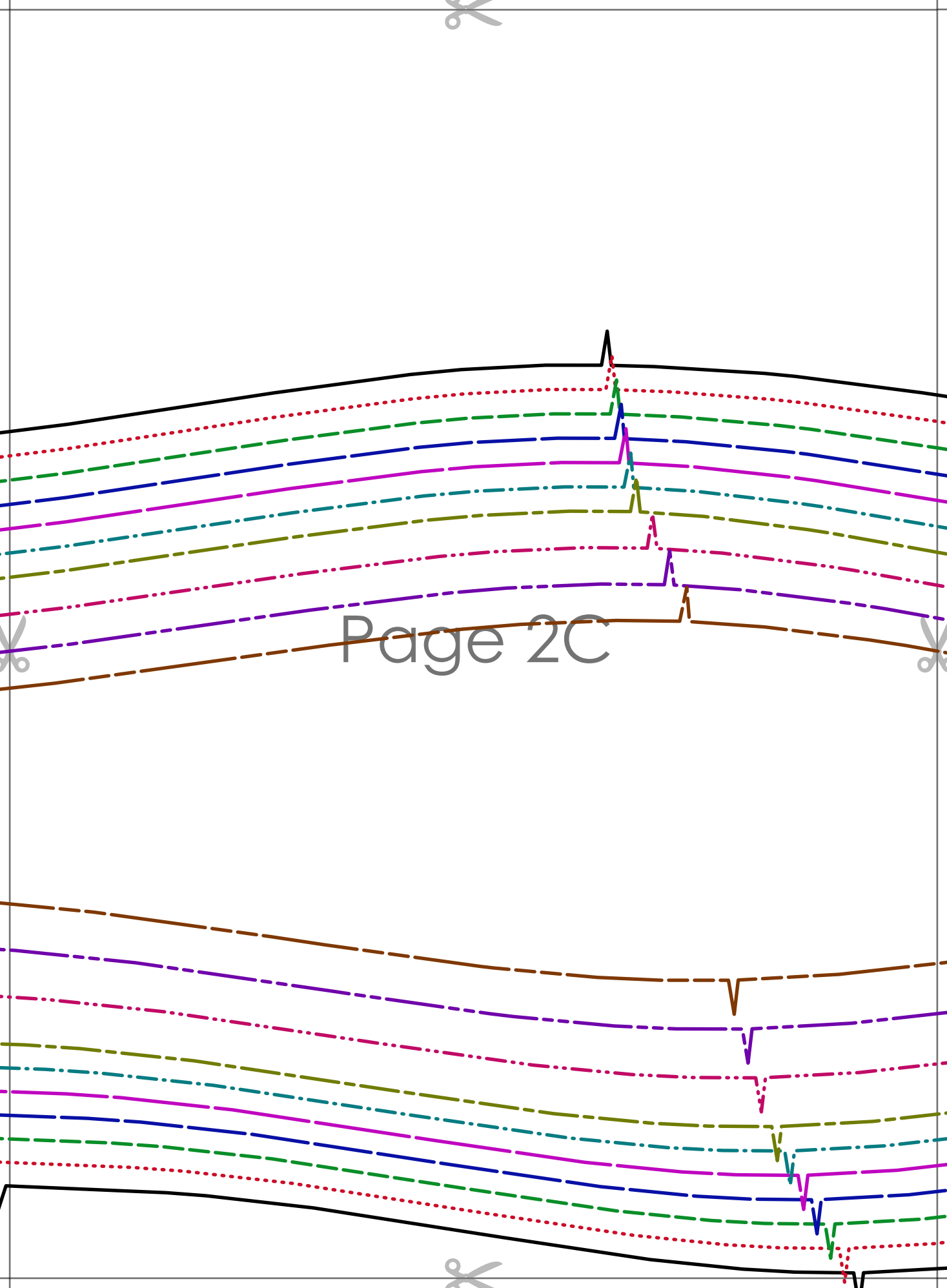


Page 2A



Page 2B





Page 2C



JUNIPER RUFFLE HEM S
1cm (3/8 in) seam allo

~~SWISS~~

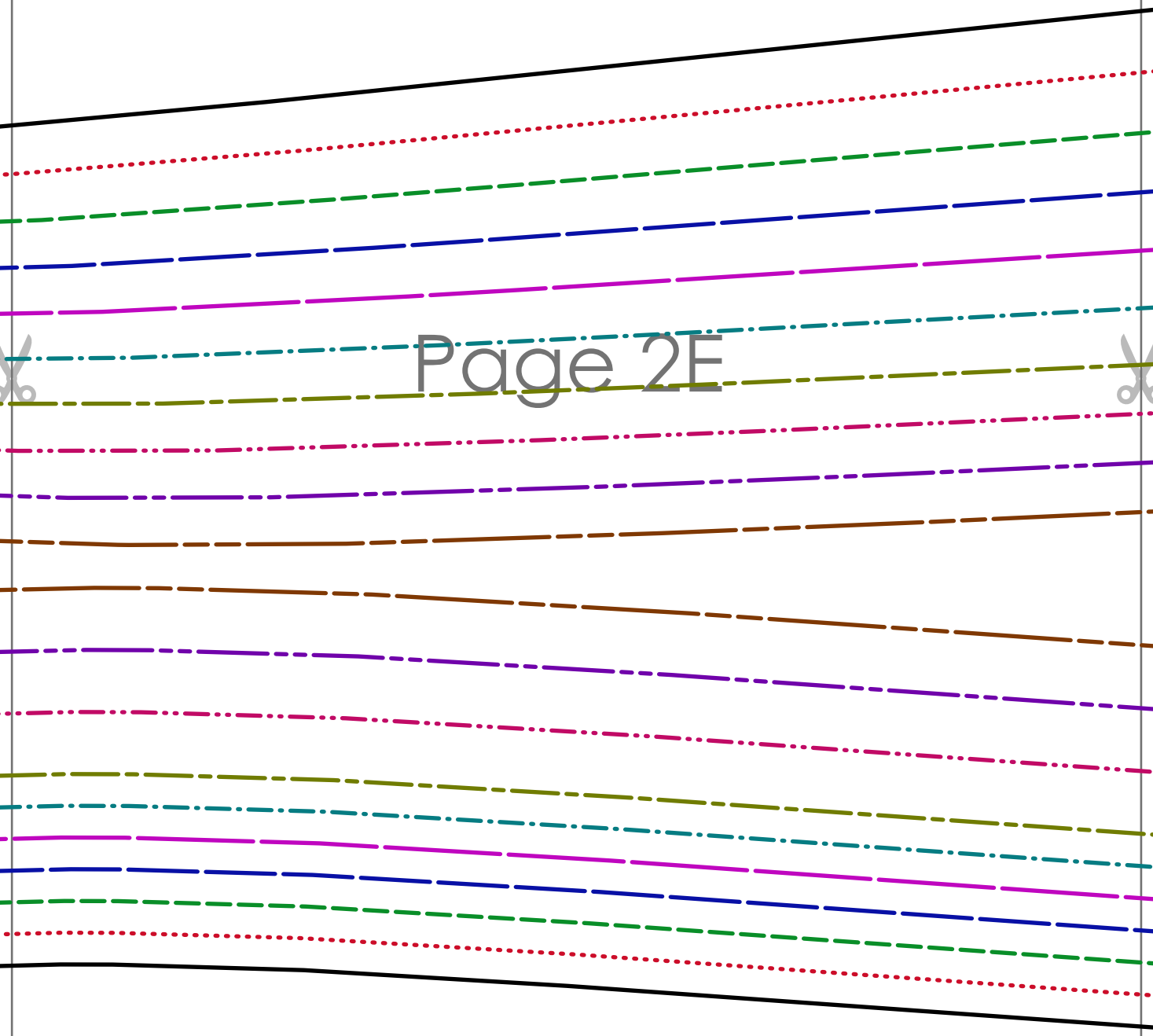
SIDE FRONT
 cut 2 main fabric
 (mirrored)



Page 2D

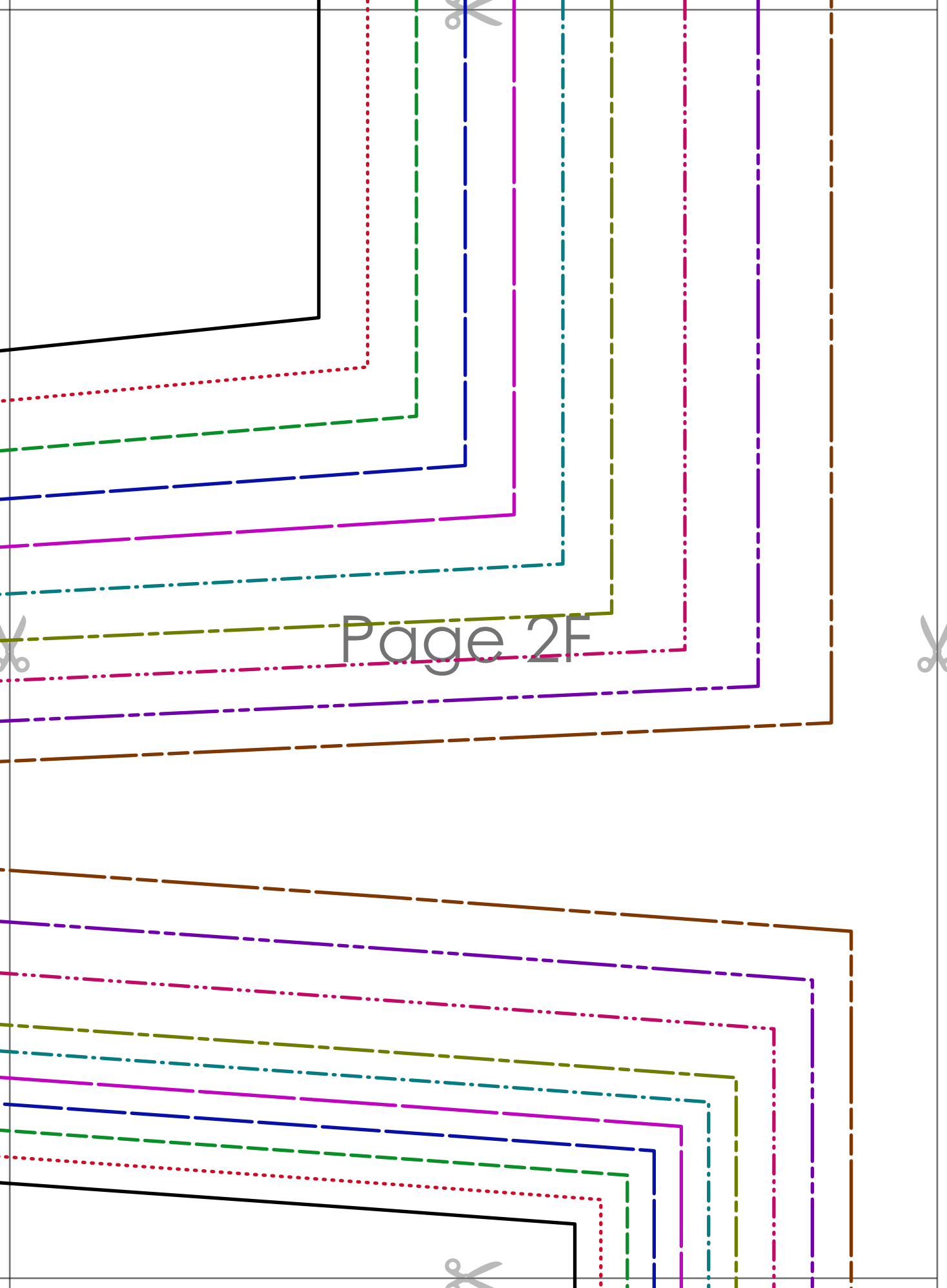


ESS
cluded



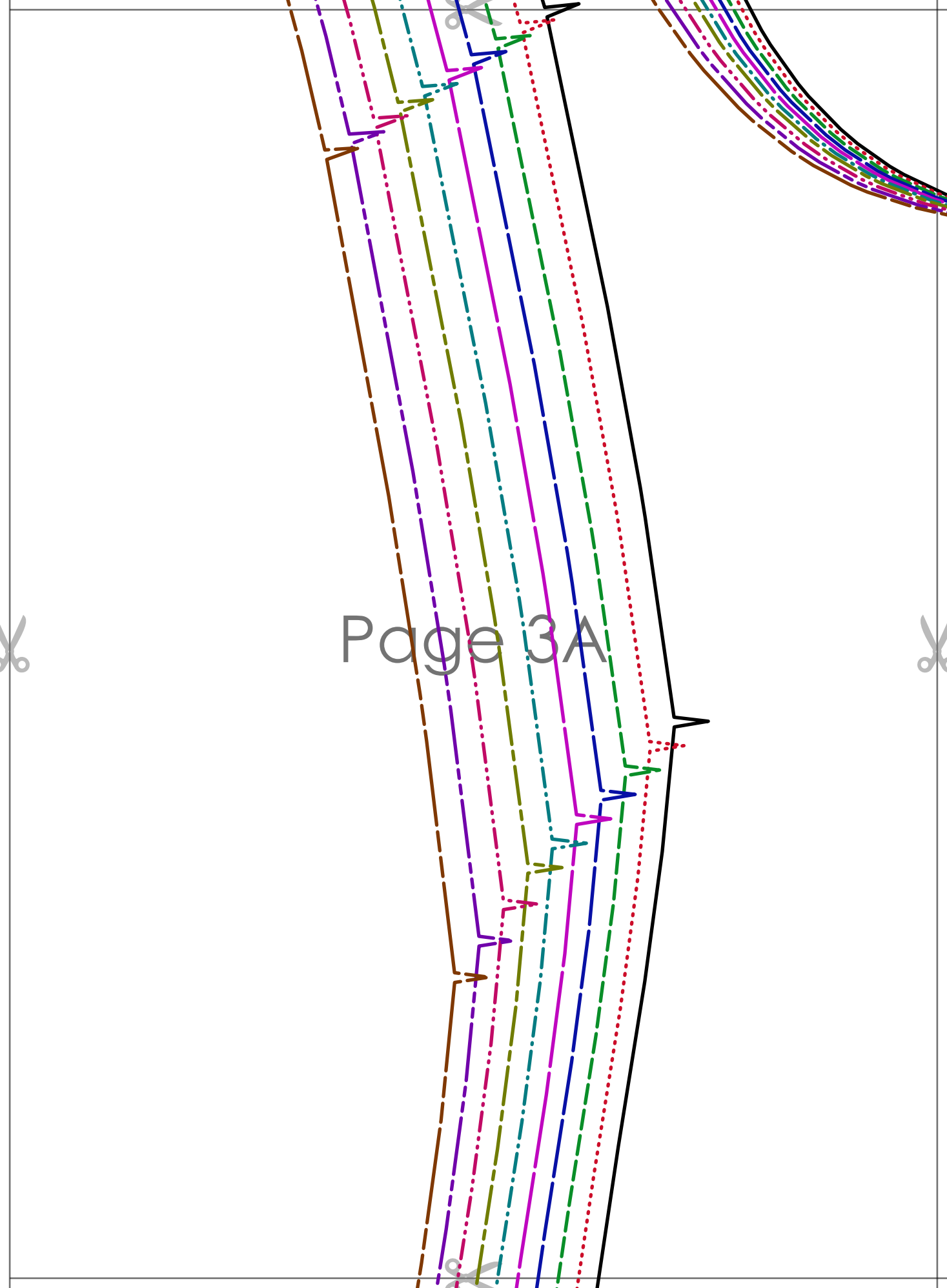
Page 2E

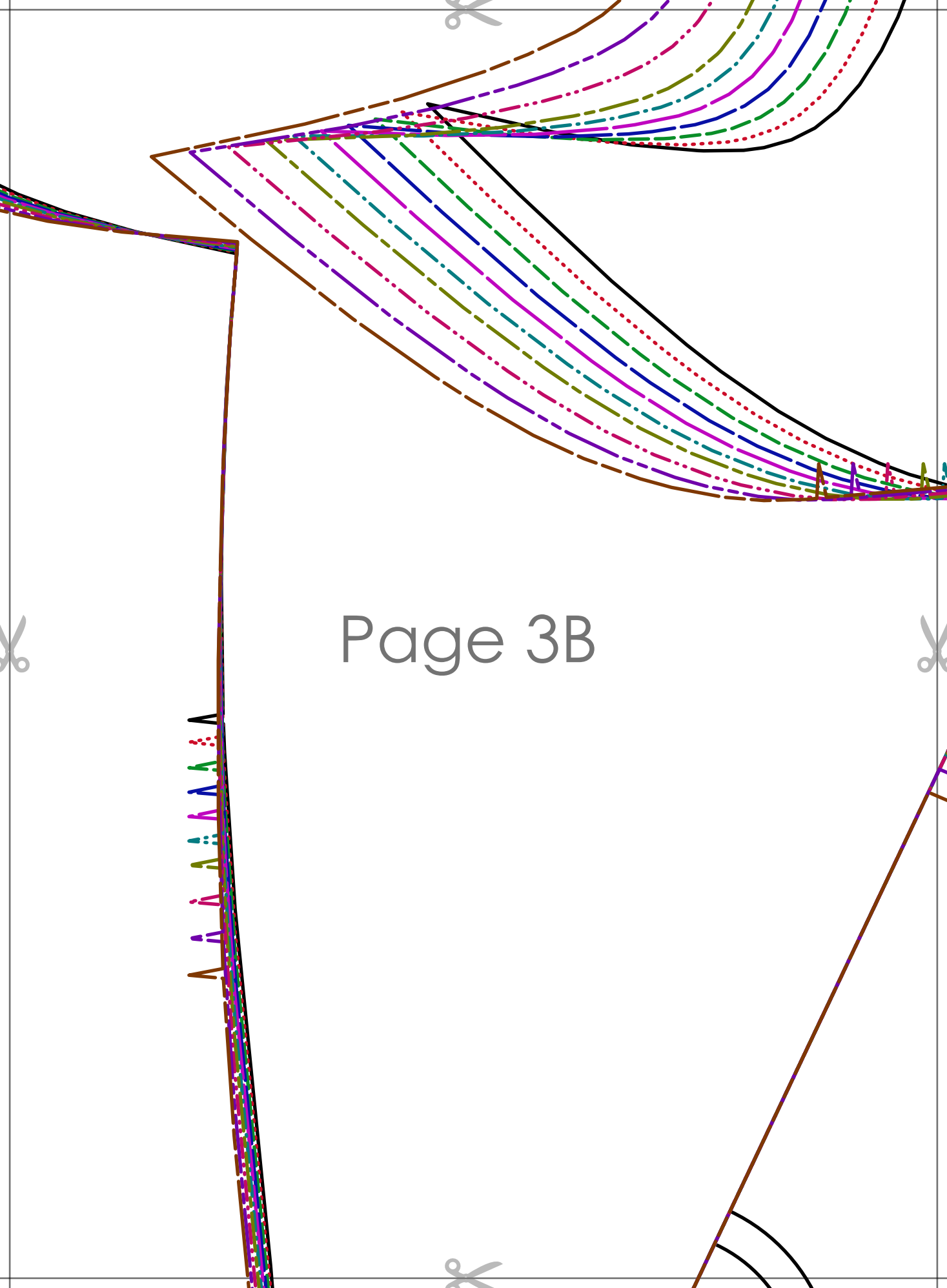




Page 2F

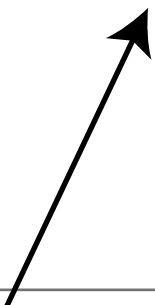
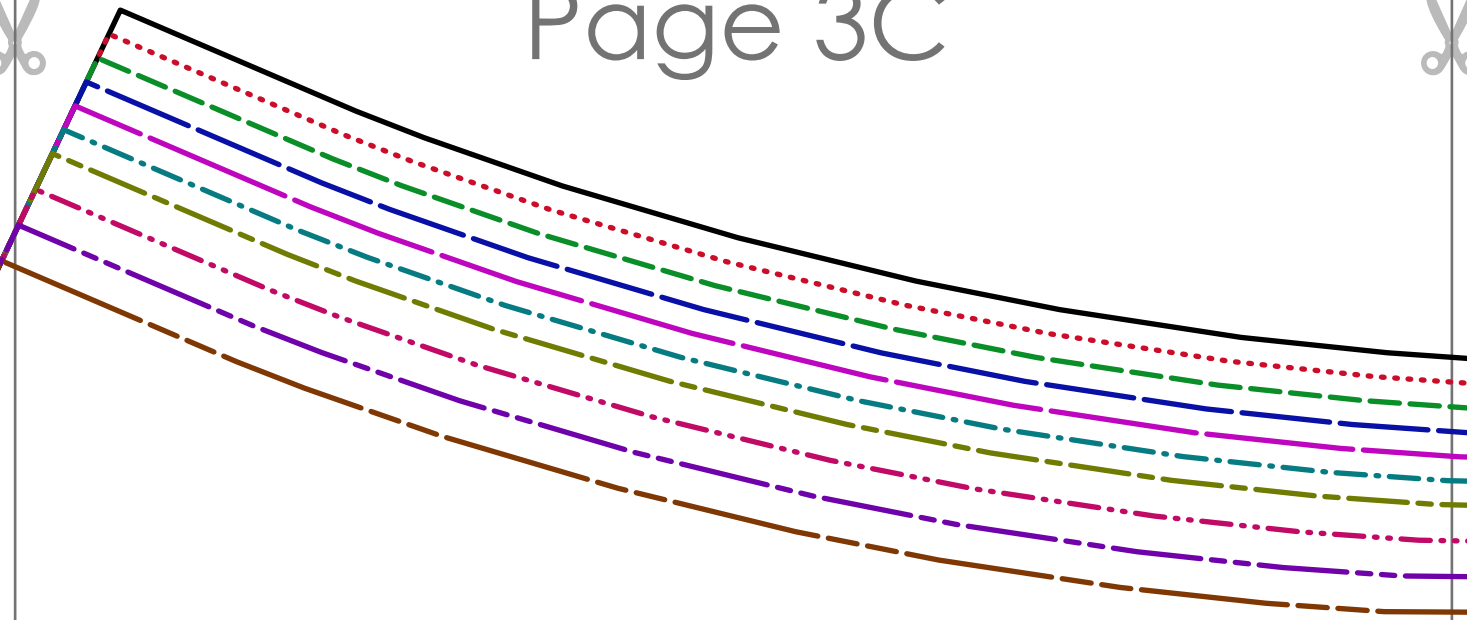
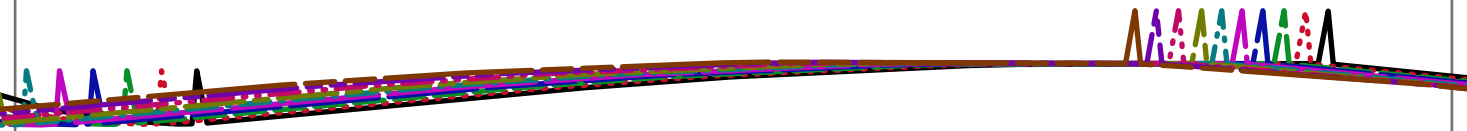
Page 3A





Page 3B

Page 3C





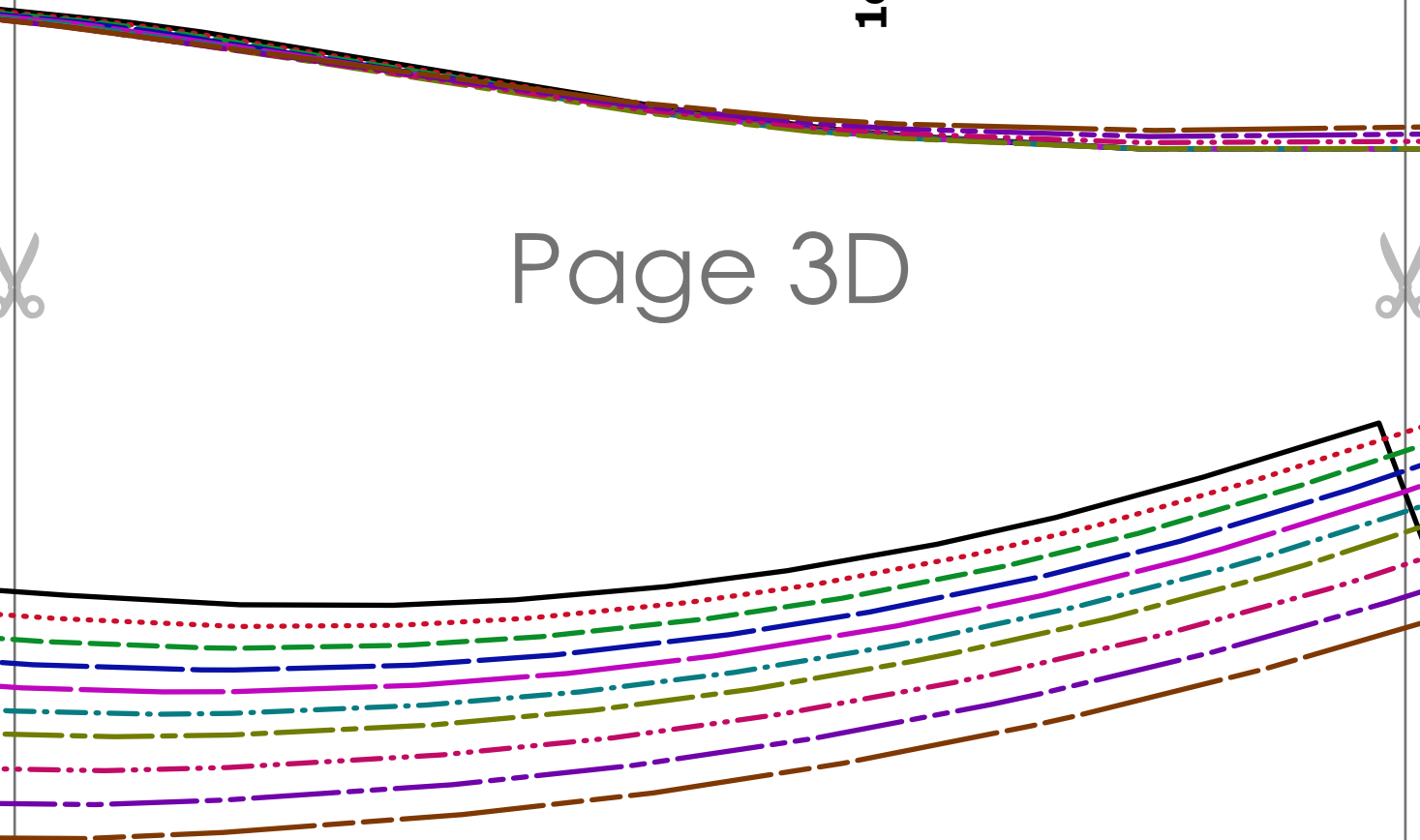
JUNIPER RUFFLE HEM SHEATH DRESS
1cm (3/8 in) seam allowance included

~~STAY-INSIDE~~

SIDE BACK
cut 2 main fabric + 2 lining
(mirrored)

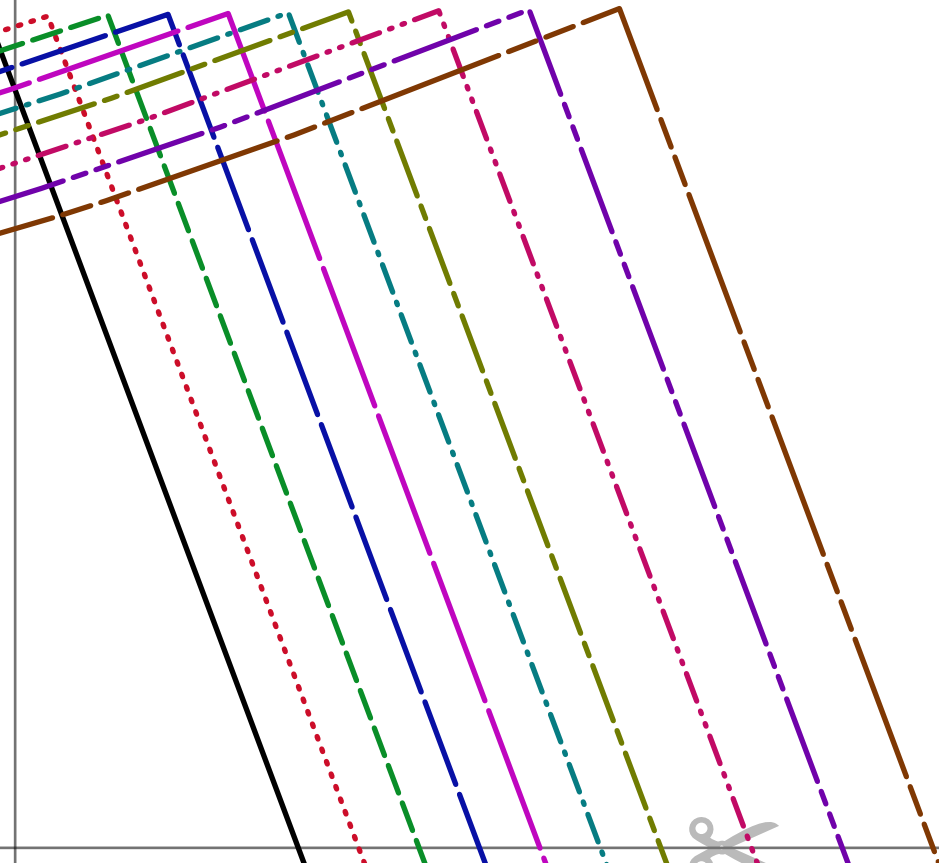


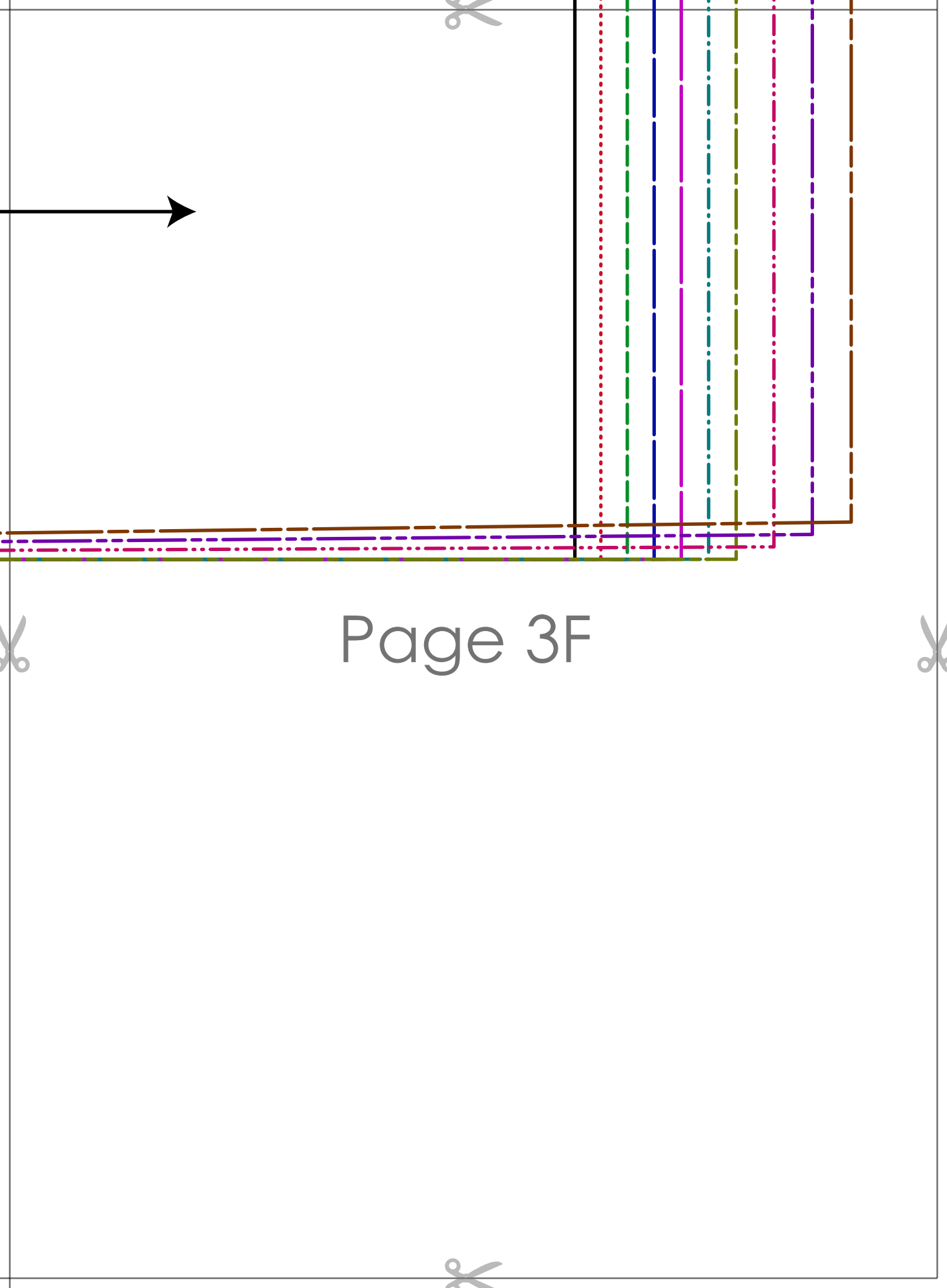
Page 3D





Page 3E





Page 3F



JUNIPER RUFFLE HEM SHIRT
1cm (3/8 in) seam allowance

~~Size: XS~~

CENTER BACK
cut 2 main fabric + 2
(mirrored)

Page 4A

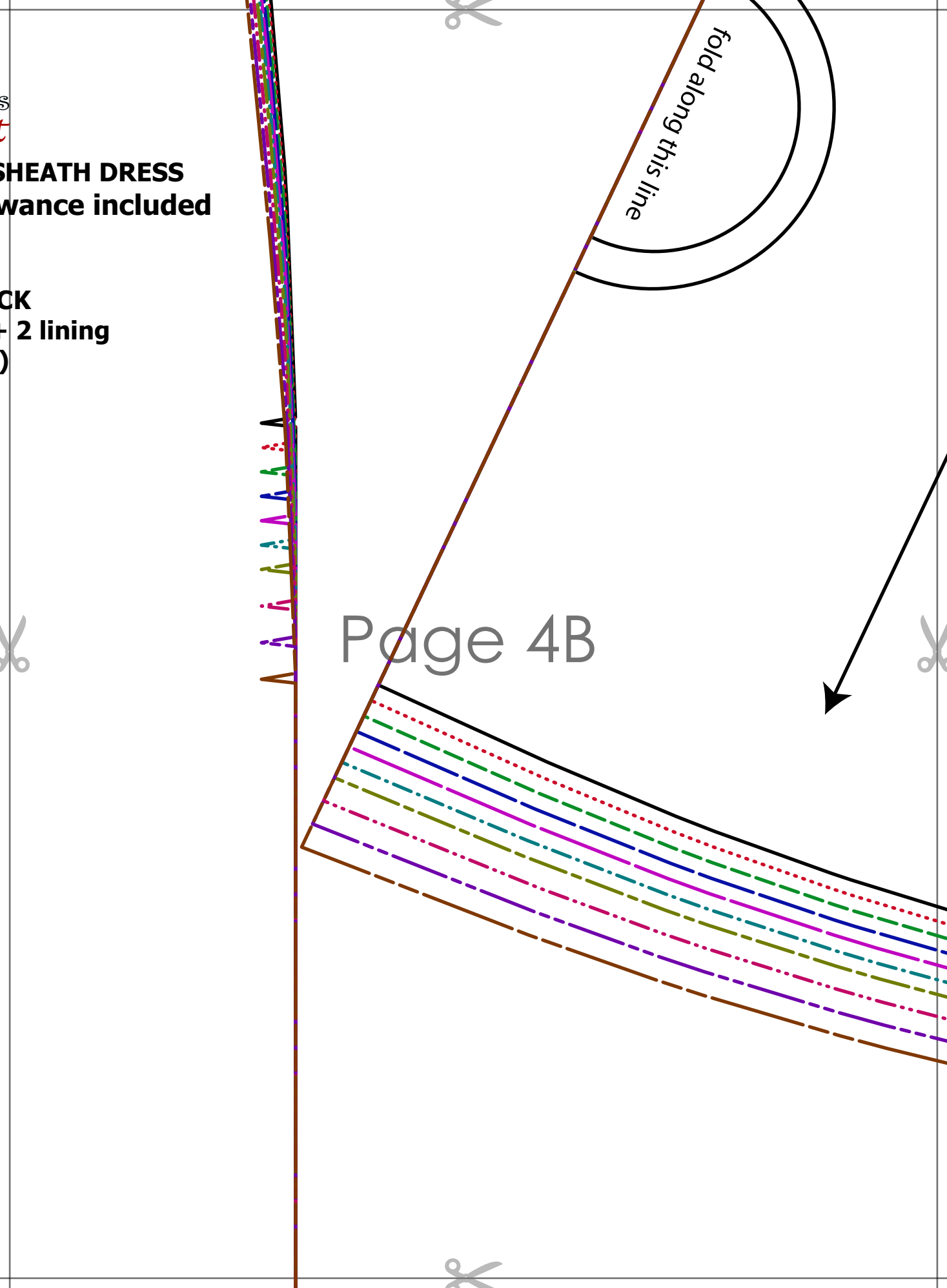


SHEATH DRESS
wance included

CK
- 2 lining
)

fold along this line

Page 4B





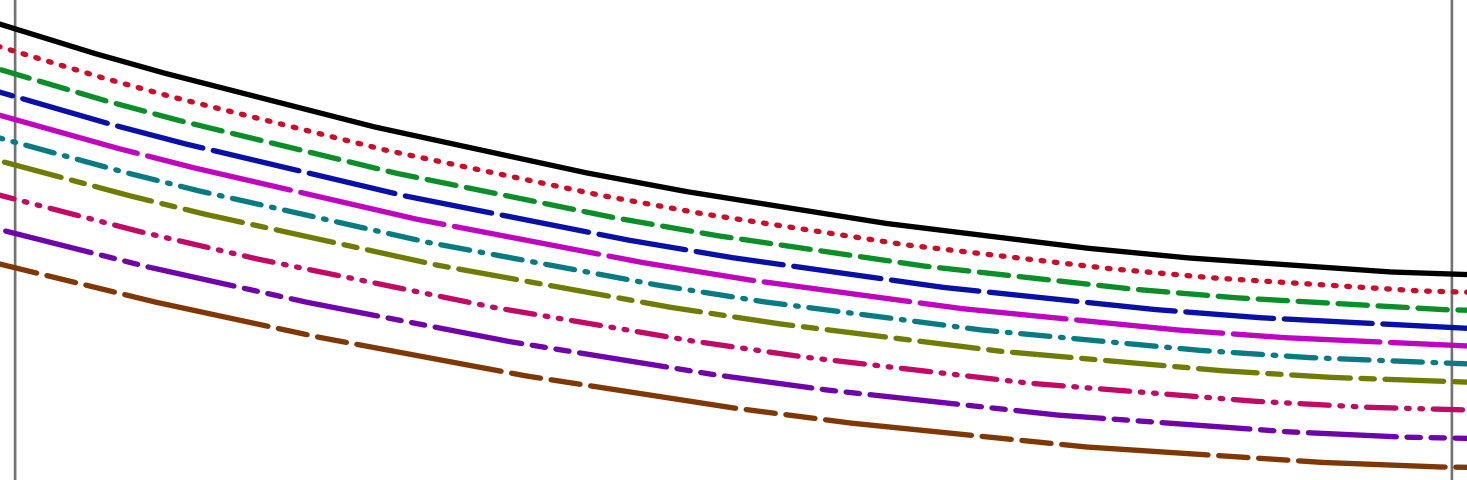
JUNIPER RUFFLE HEM SHEATH DRESS
1cm (3/8 in) seam allowance included

~~Size 20~~

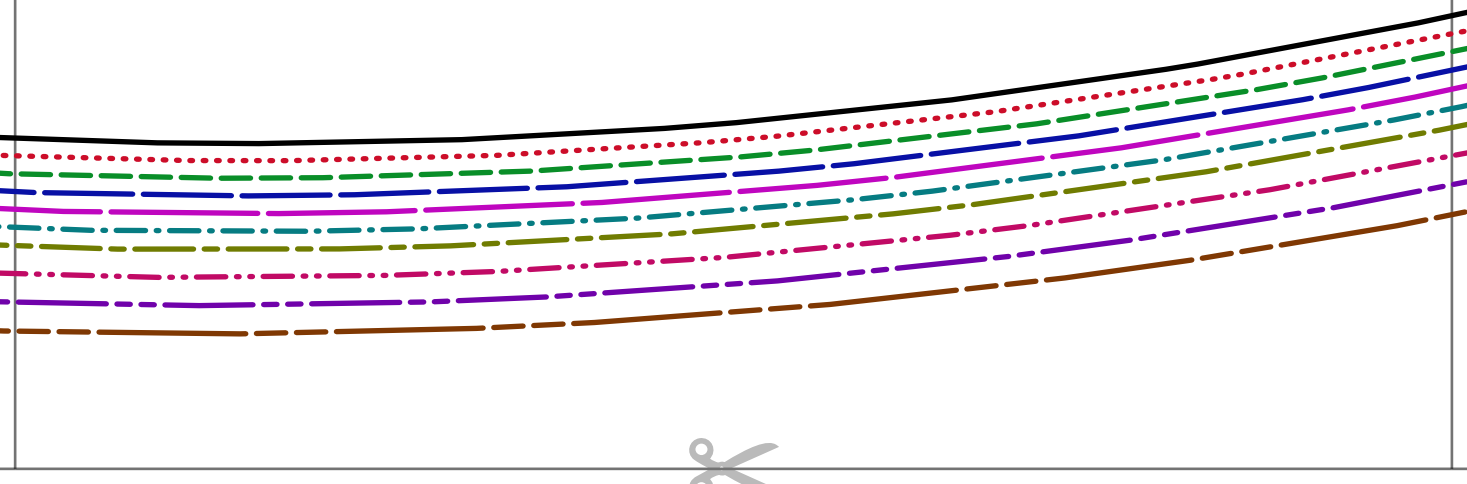
RUFFLE

cut 2 main fabric (on the fold)

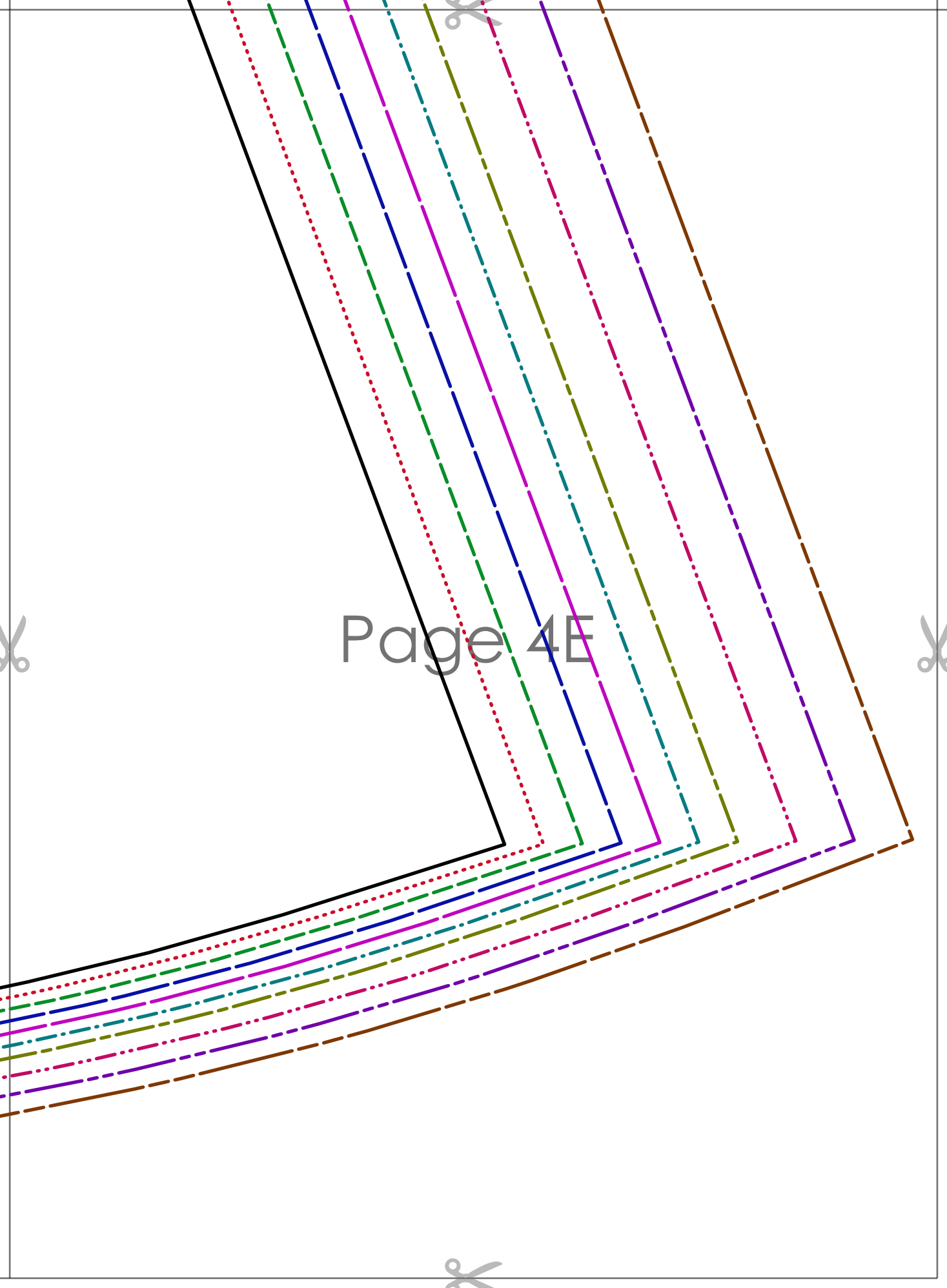
Page 4C



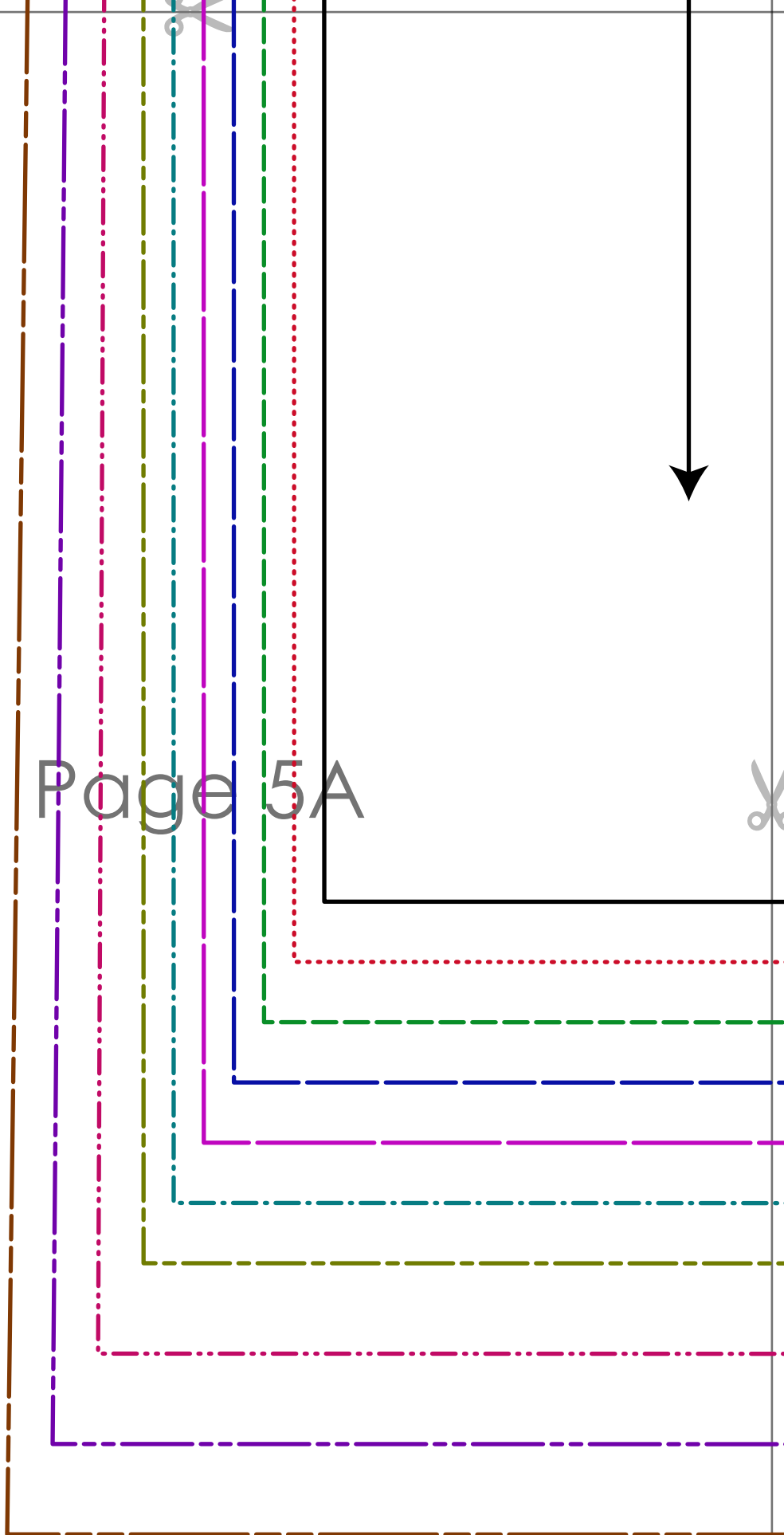
Page 4D



Page 4E



Page 5A



Page 5B



A vertical strip on the left side of the page containing a series of horizontal lines for handwriting practice. From top to bottom, the lines are: a solid black line, a dotted red line, a dashed green line, a dashed blue line, a solid purple line, a dash-dot teal line, a dashed olive green line, a dotted magenta line, a dashed purple line, and a dashed brown line. The strip is bounded on the left by a thin vertical line and on the right by a thicker vertical line.