

## PRINTING INSTRUCTIONS

- Tiana's Closet sewing patterns are made in Layered PDF format, which means all sizes are saved in one file and can be shown or hidden. It is recommended to use Adobe Acrobat Reader (paid version on Mac OS, free on Windows) or Foxit PDF Reader (free, works on Windows only) to read the file correctly. In order to choose the desired size(s), go to Layers tab of your PDF reader, uncheck all boxes except for the desired size(s) and the box Print for all sizes.

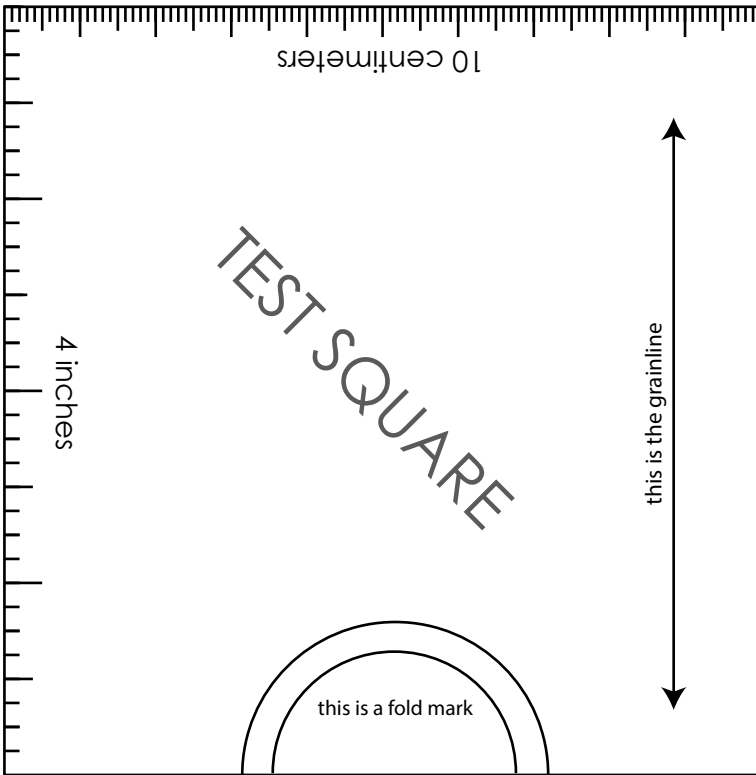
- When printing the pattern, go to Print settings, in the tab Scale choose Custom scale: 100% (or Scaling: None or Actual Size) to print true to size. Note: some computers print smaller than true size even when you choose 100% scale, so you will have to adjust the scale to a little larger than 100% and measure the test square until you get the true size using the test rulers

- Always print the first page of the file and measure to avoid waste of paper.

- After printing the pattern, cut the pages along the lines with scissors icon, align and tape the pages according to their sequences. For example, pages 1A, 1B, 1C, 1D... are line up in one row from left to right, pages 1A, 2A, 3A, 3B... are lined up in one column from up to down.

- You can find photo instruction for printing sewing patterns on Tiana's Closet website:

<https://tiansacloset.com/index.php/how-to-print-tianas-closet-patterns/>



## SIZE TABLE

### WOMEN'S CLOTHING SIZE

- Sizing is based on body measurements.

- If between sizes, size up for woven fabric, size down for knit fabric.

Unit: centimeter

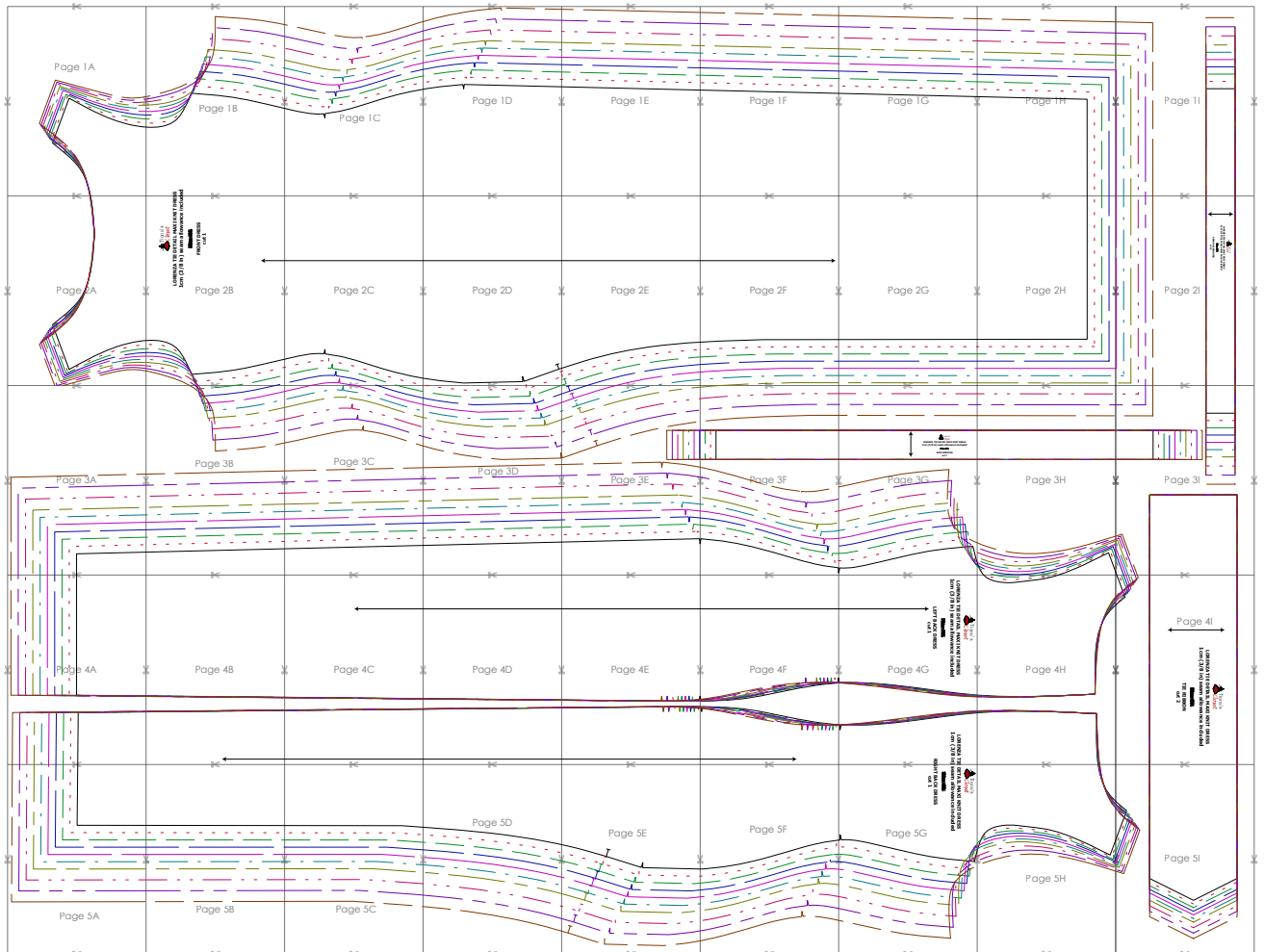
| Size                  | XXS | XS | S  | M   | L   | XL  | XXL | 3XL  | 4XL | 5XL  |
|-----------------------|-----|----|----|-----|-----|-----|-----|------|-----|------|
| <b>Bust</b>           | 80  | 84 | 88 | 92  | 96  | 100 | 104 | 110  | 116 | 122  |
| <b>Waist</b>          | 60  | 64 | 68 | 72  | 76  | 80  | 84  | 90   | 96  | 102  |
| <b>Hip</b>            | 88  | 92 | 96 | 100 | 104 | 108 | 112 | 118  | 124 | 130  |
| <b>Cross shoulder</b> | 35  | 36 | 37 | 38  | 39  | 40  | 41  | 42.5 | 44  | 45.5 |

Unit: inch

| Size                  | XXS  | XS   | S    | M    | L    | XL   | XXL  | 3XL  | 4XL  | 5XL  |
|-----------------------|------|------|------|------|------|------|------|------|------|------|
| <b>Bust</b>           | 31.5 | 33.1 | 34.6 | 36.2 | 37.8 | 39.4 | 40.9 | 43.3 | 45.7 | 48.0 |
| <b>Waist</b>          | 23.6 | 25.2 | 26.8 | 28.3 | 29.9 | 31.5 | 33.1 | 35.4 | 37.8 | 40.2 |
| <b>Hip</b>            | 34.6 | 36.2 | 37.8 | 39.4 | 40.9 | 42.5 | 44.1 | 46.5 | 48.8 | 51.2 |
| <b>Cross shoulder</b> | 13.8 | 14.2 | 14.6 | 15.0 | 15.4 | 15.7 | 16.1 | 16.7 | 17.3 | 17.9 |

For more ideas and free sewing patterns, visit <http://tiansacloset.com>

# PATTERN LAYOUT



## LEGEND

SIZE XXS



SIZE XS



SIZE S



SIZE M



SIZE L



SIZE XL



SIZE XXL



SIZE 3XL



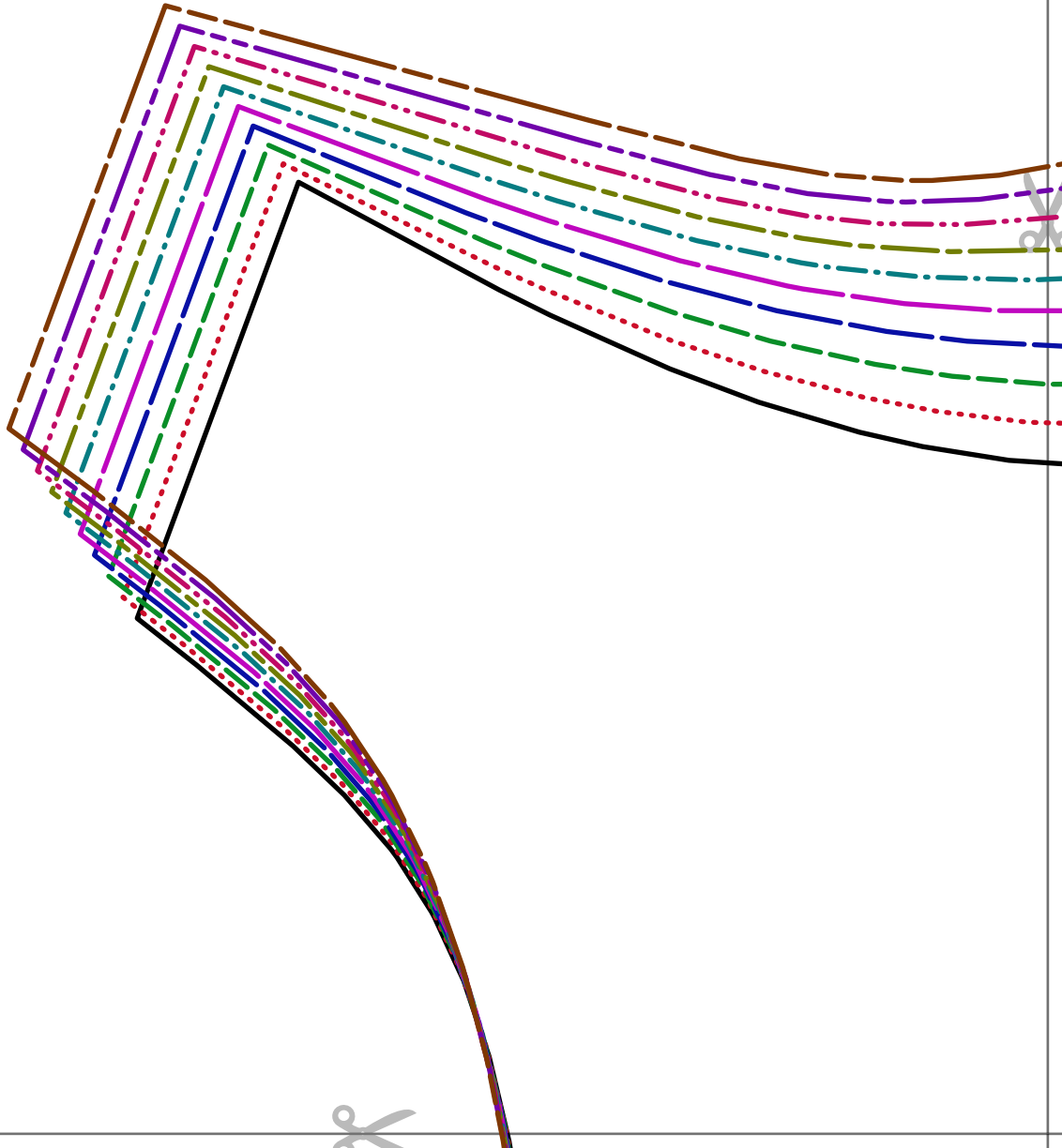
SIZE 4XL

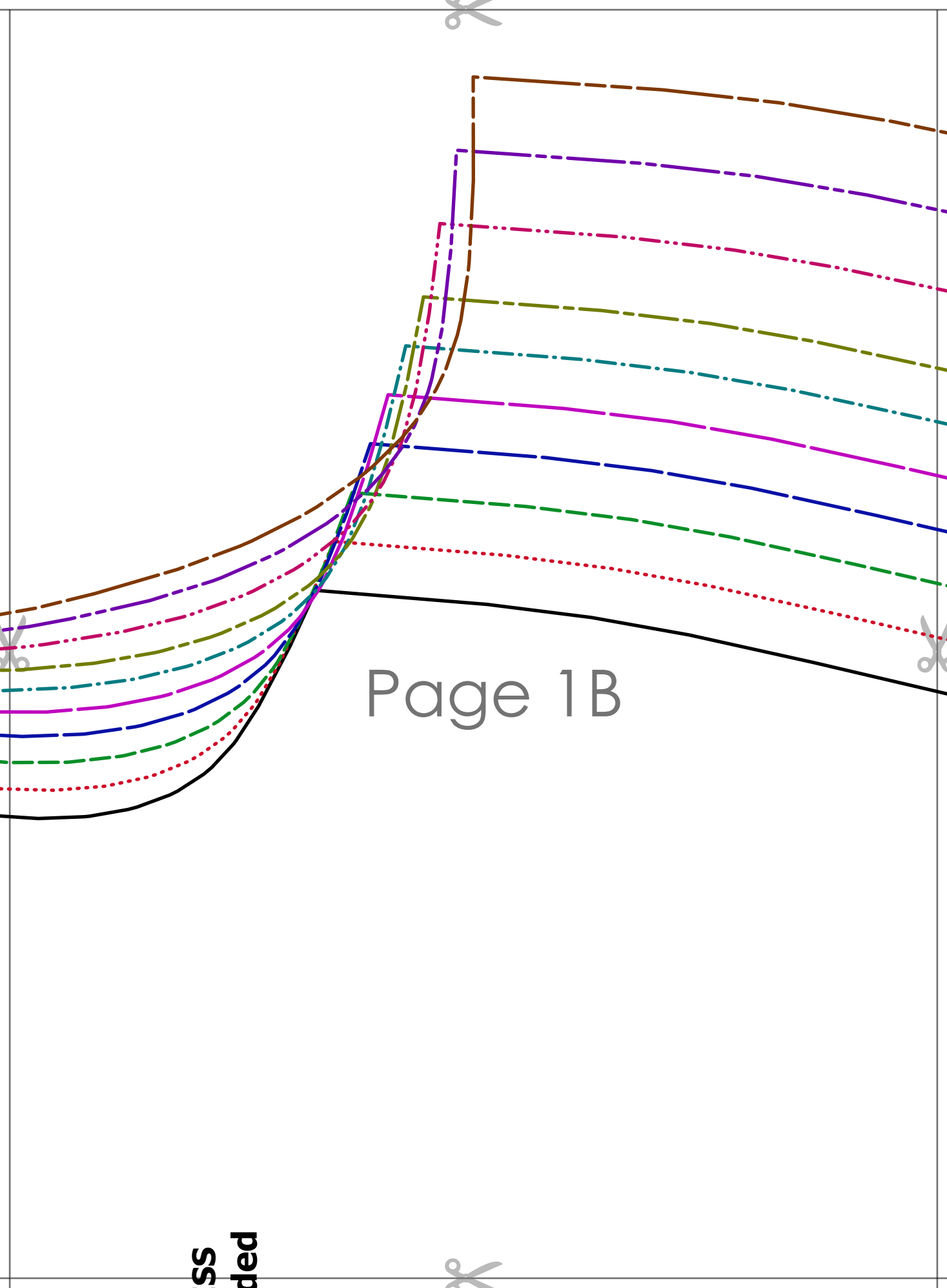


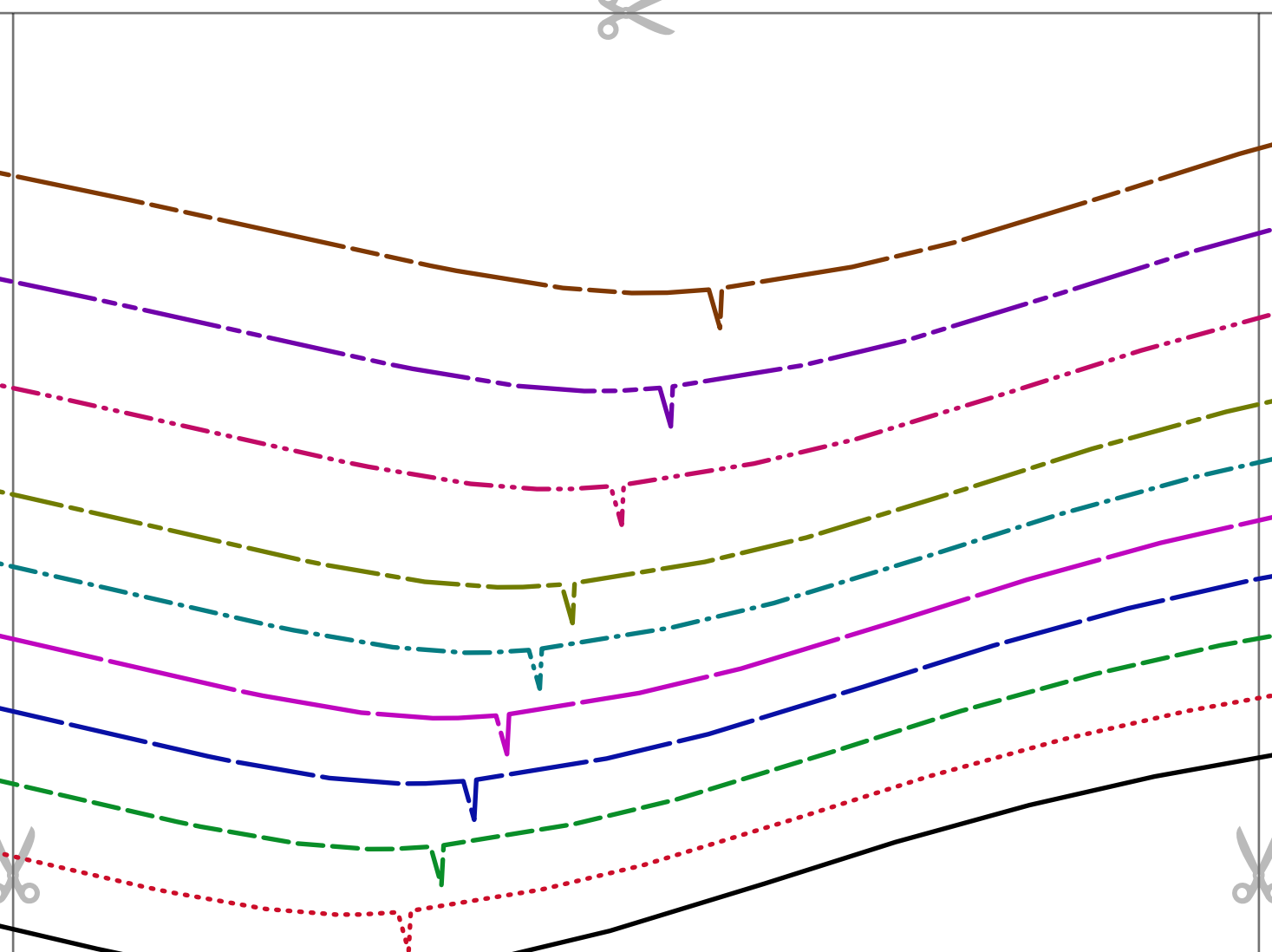
SIZE 5XL



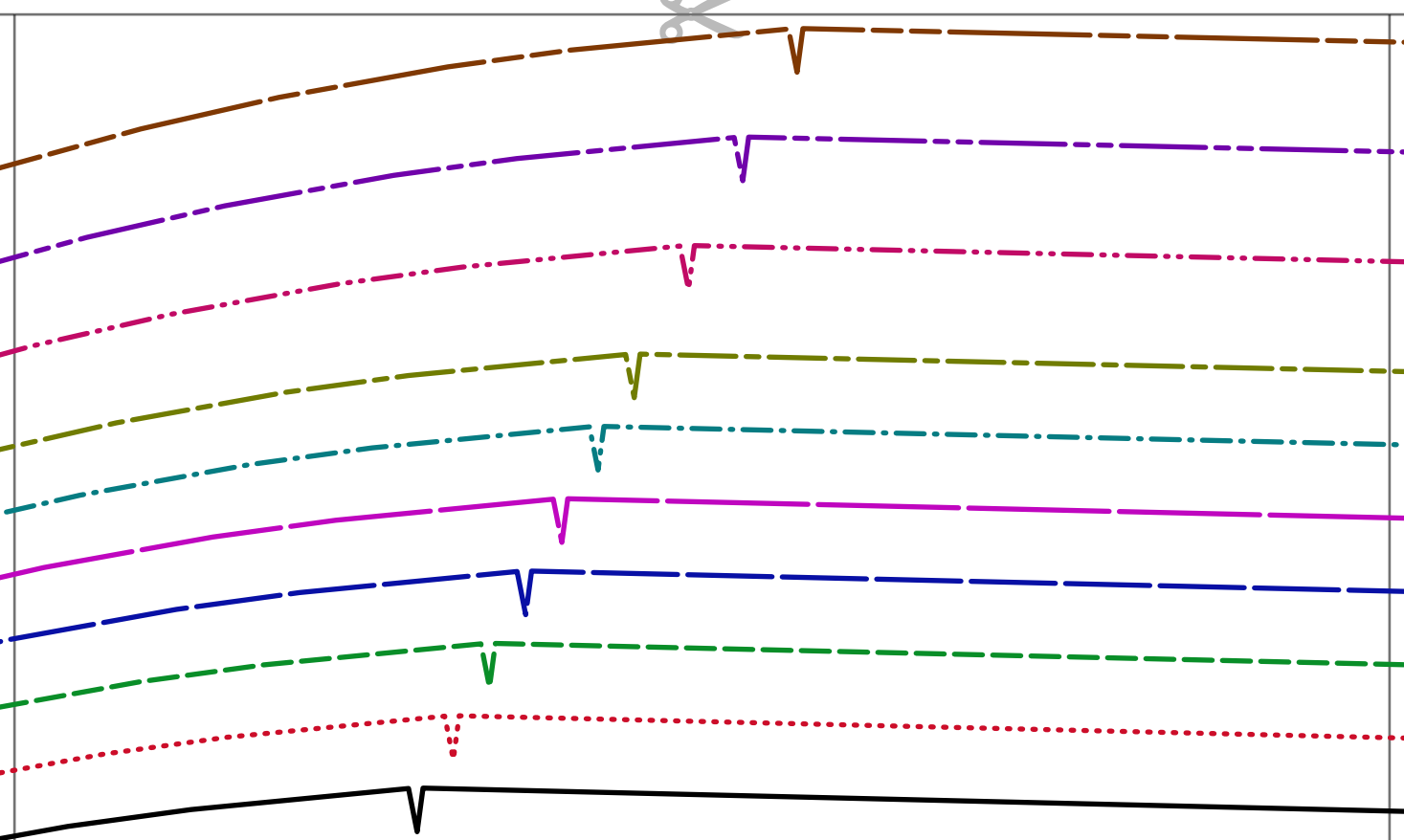
Page 1A



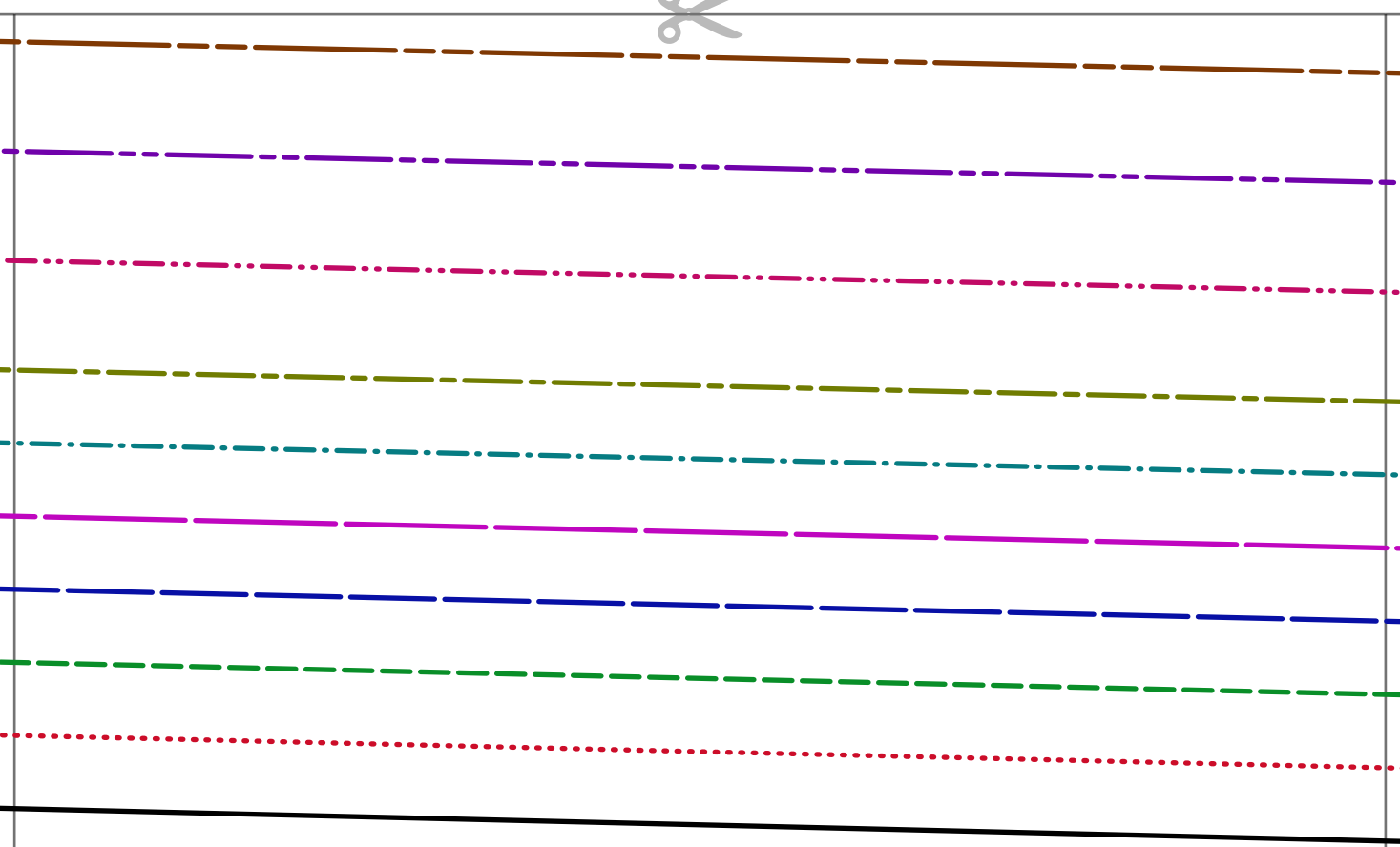




Page 1C

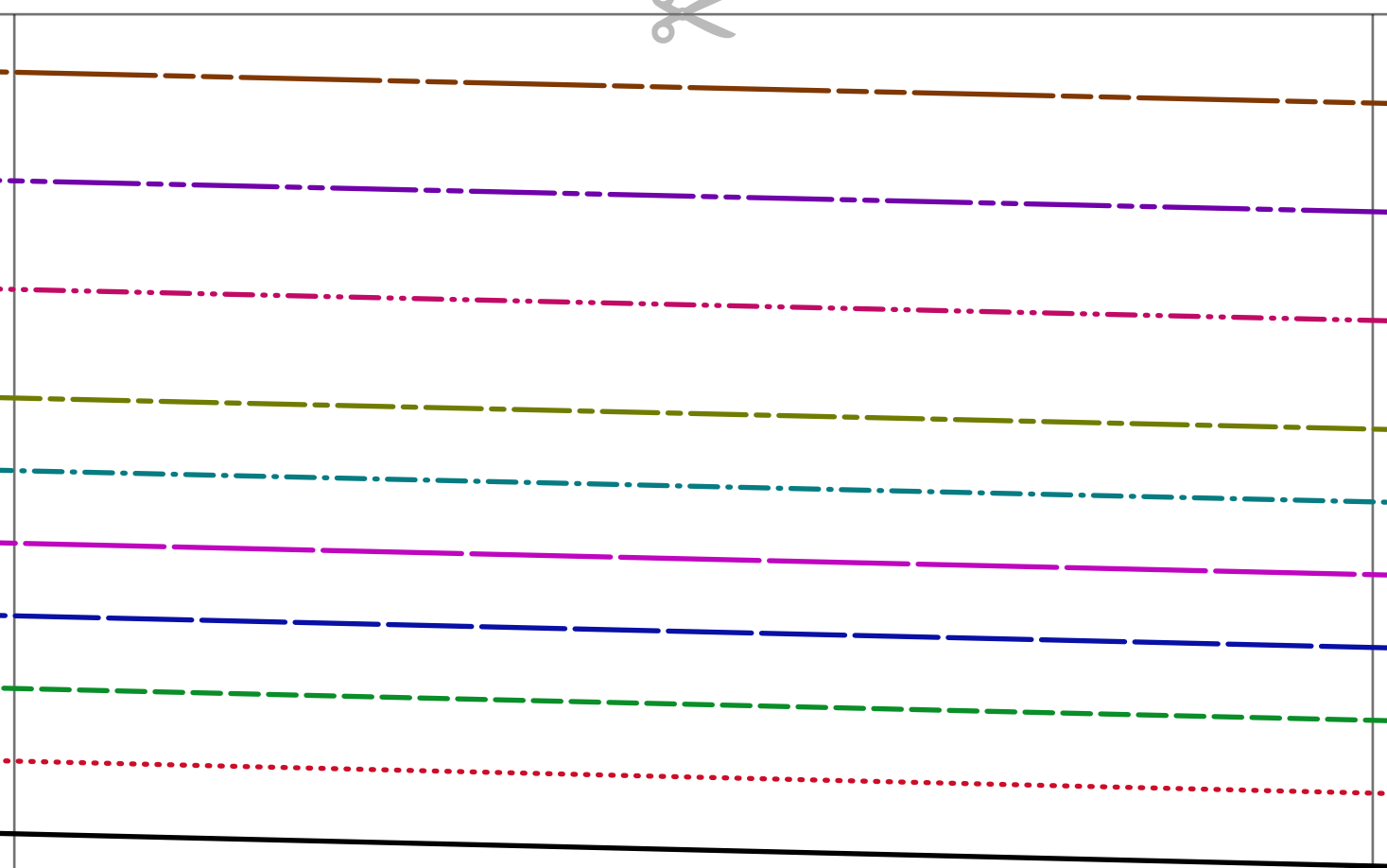


Page 1D



Page 1E

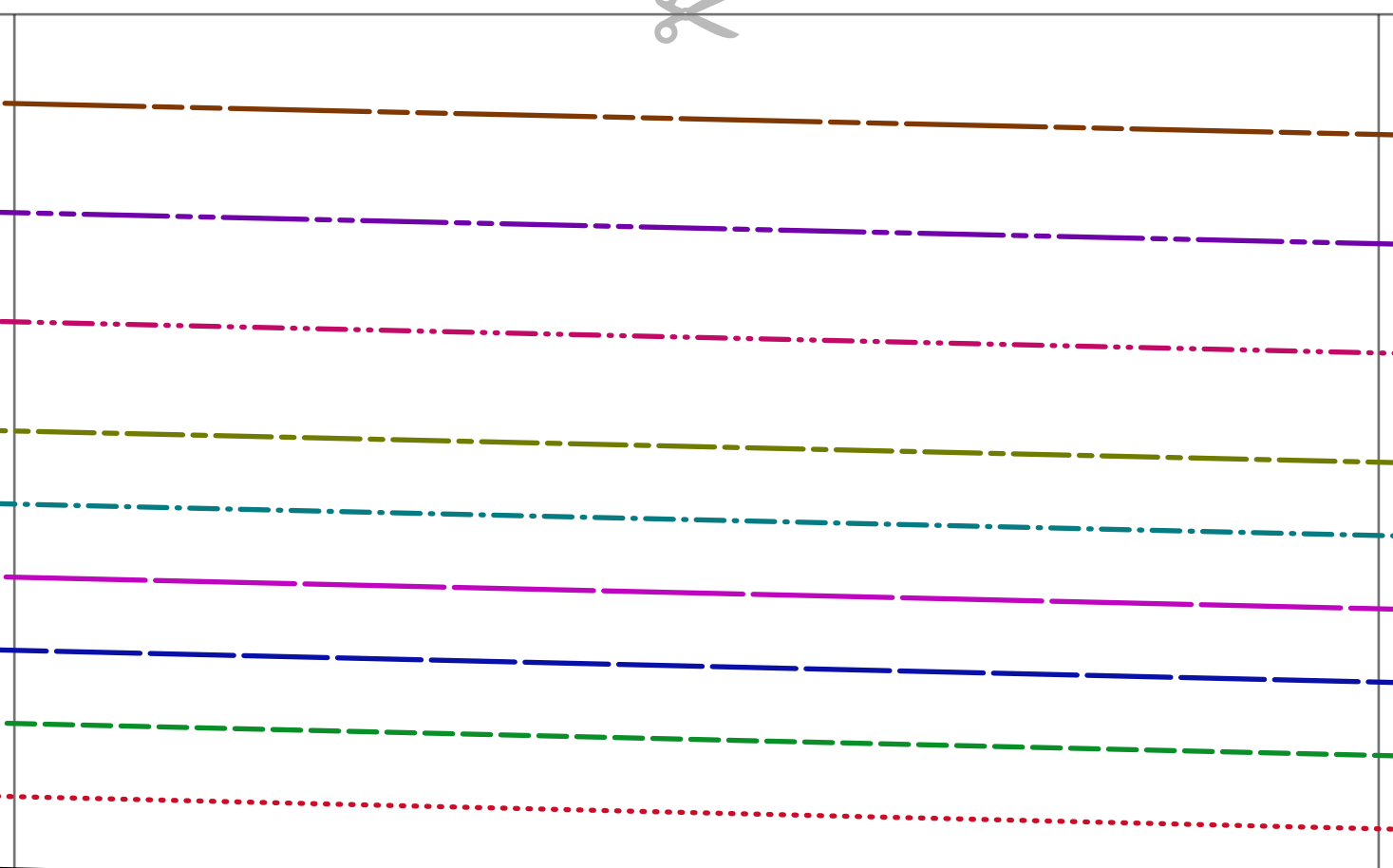




Page 1F

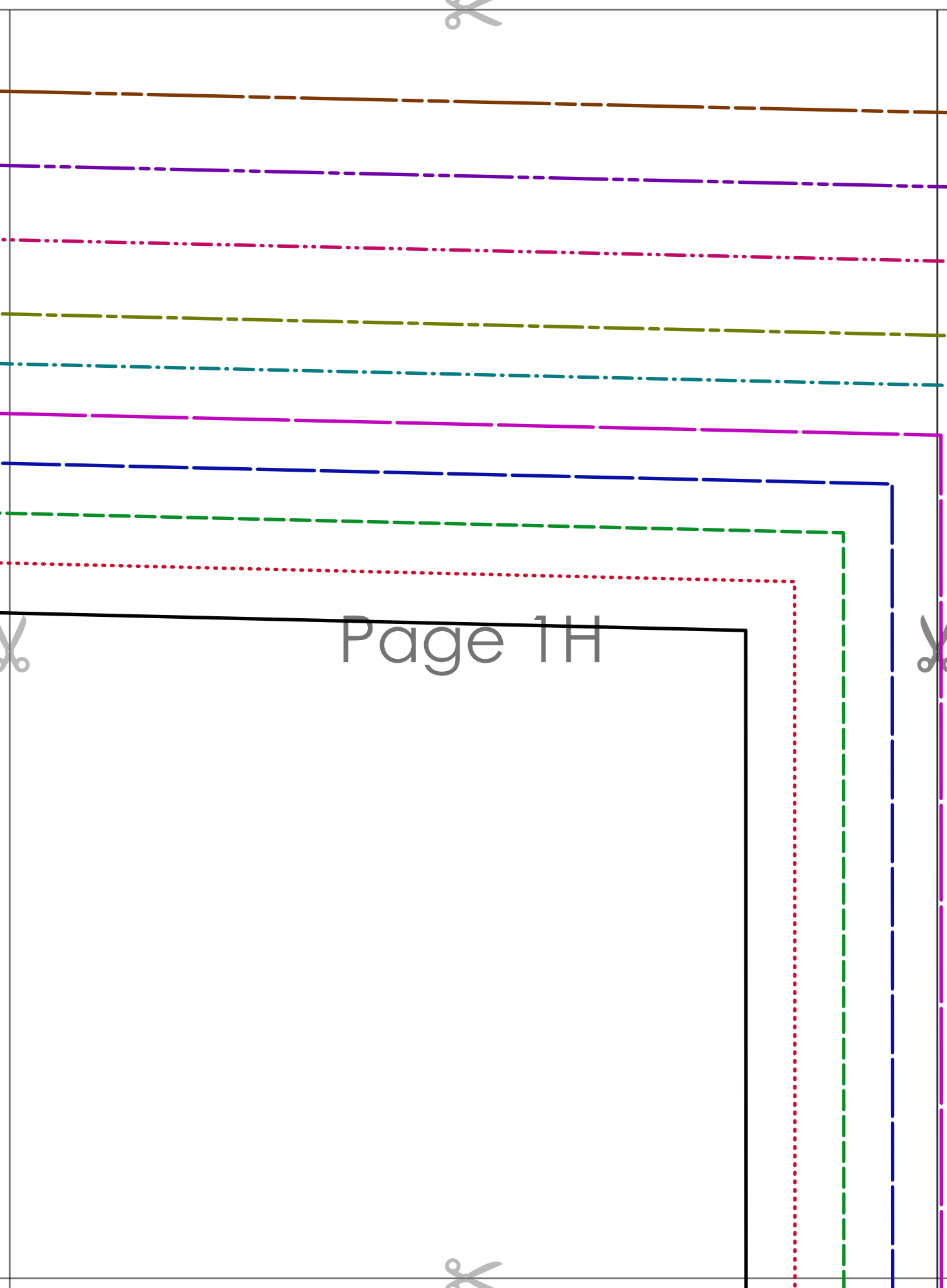






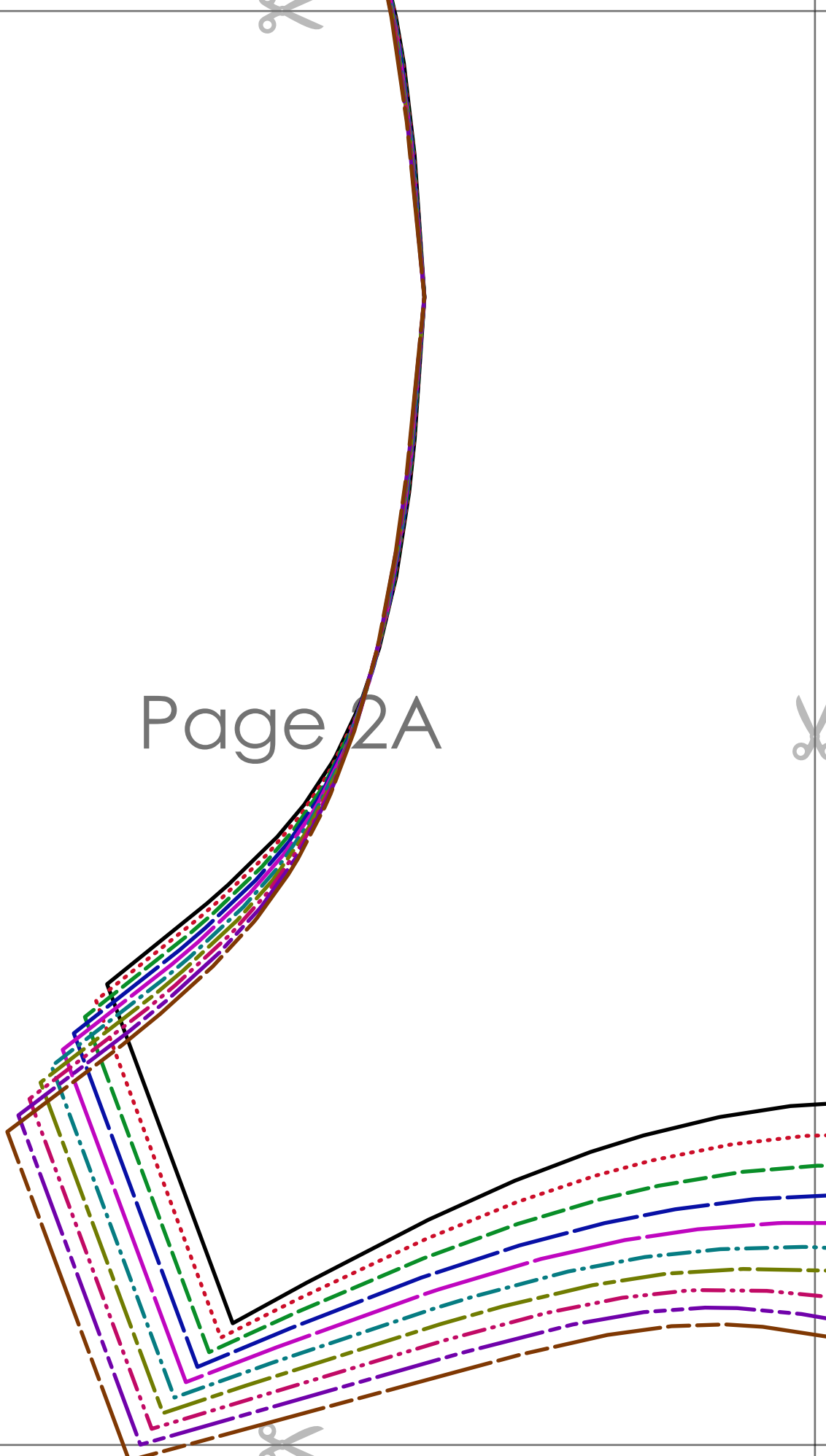
Page 1G





Page 1H

Page 2A



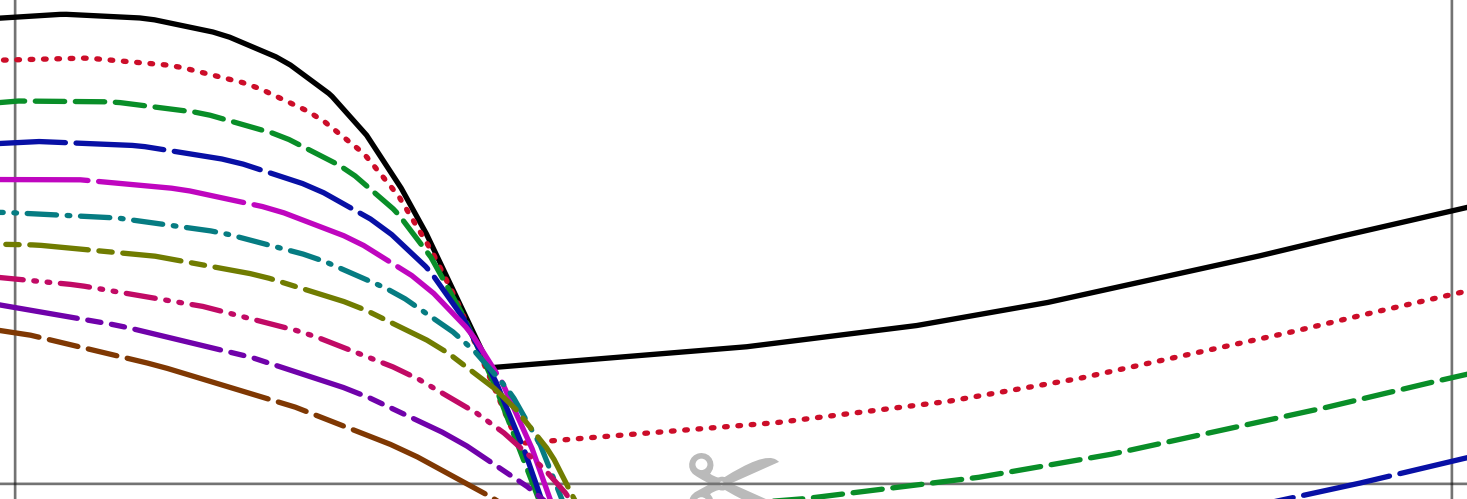
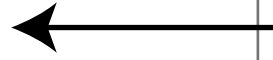


**LORENZA TIE DETAIL MAXI KNIT DRESS**  
**1cm (3/8 in) seam allowance included**

~~SIZE 20-22~~

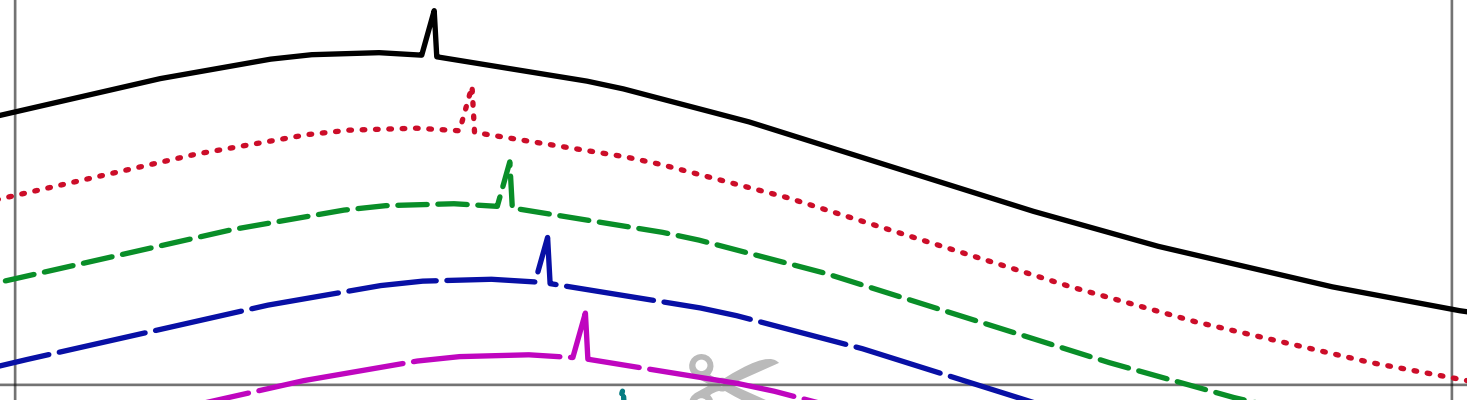
**FRONT DRESS**  
cut 1

Page 2B





Page 2C

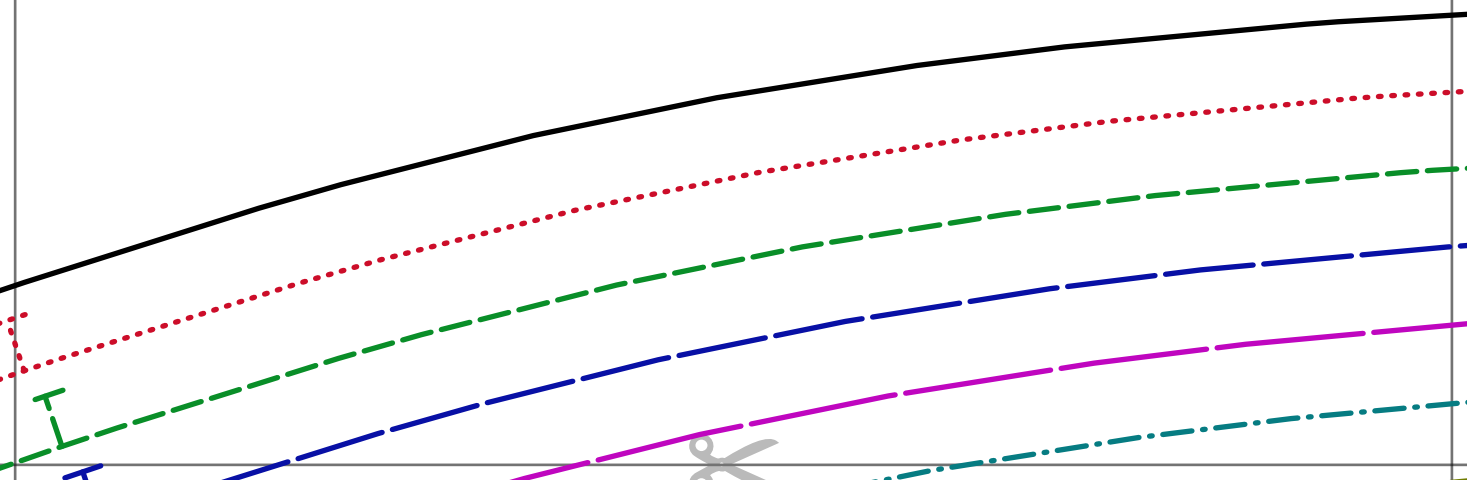




Page 2D

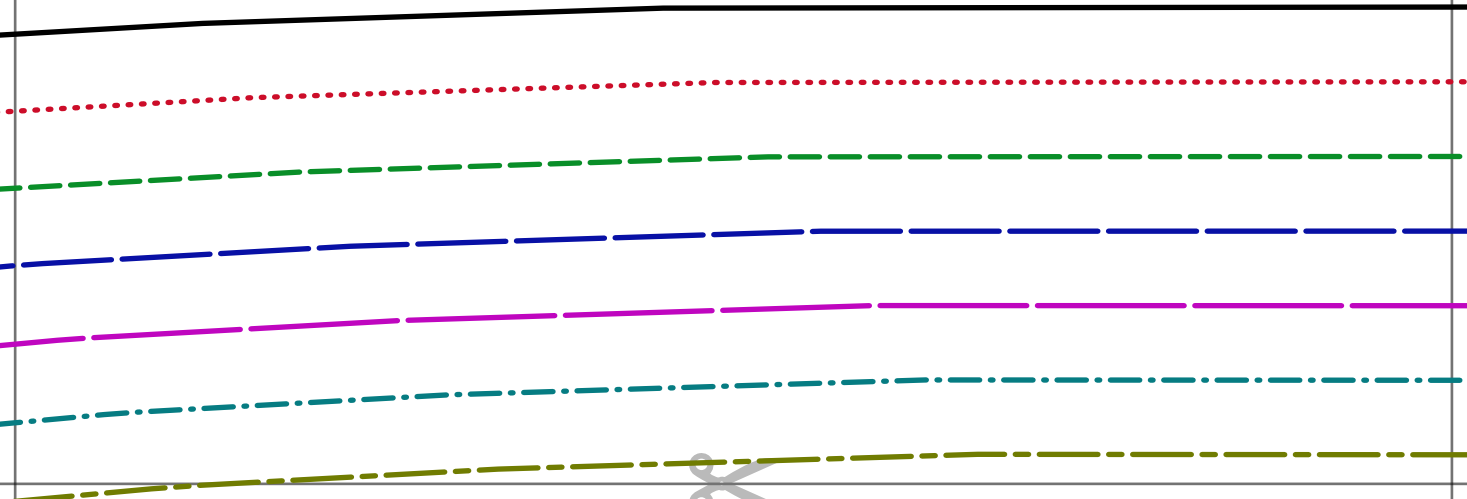


Page 2E



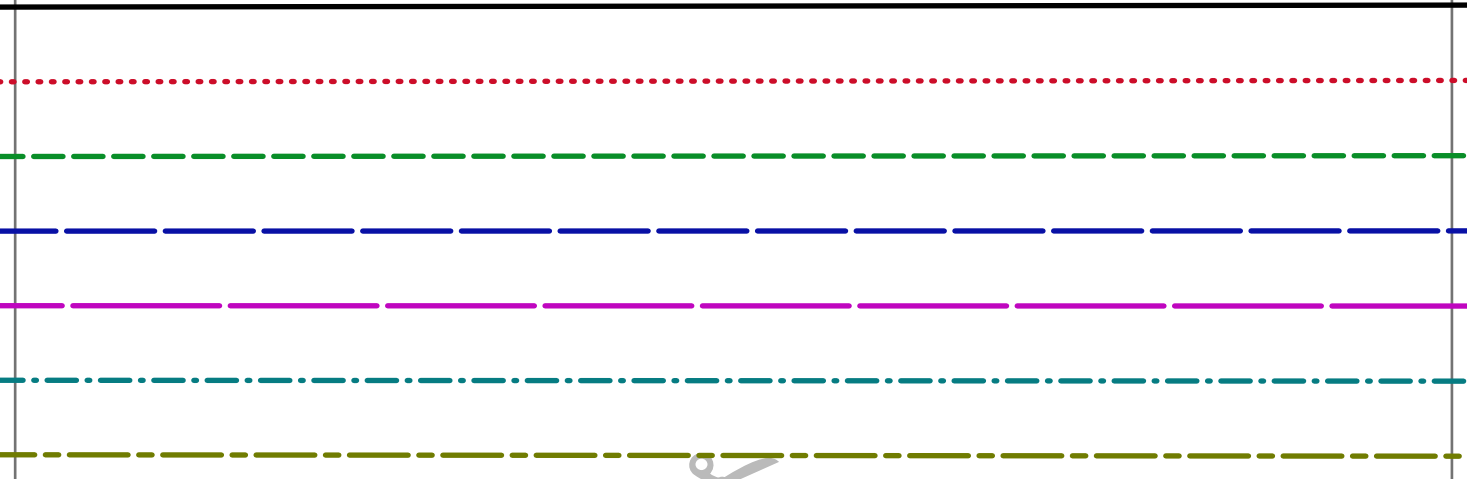


Page 2F

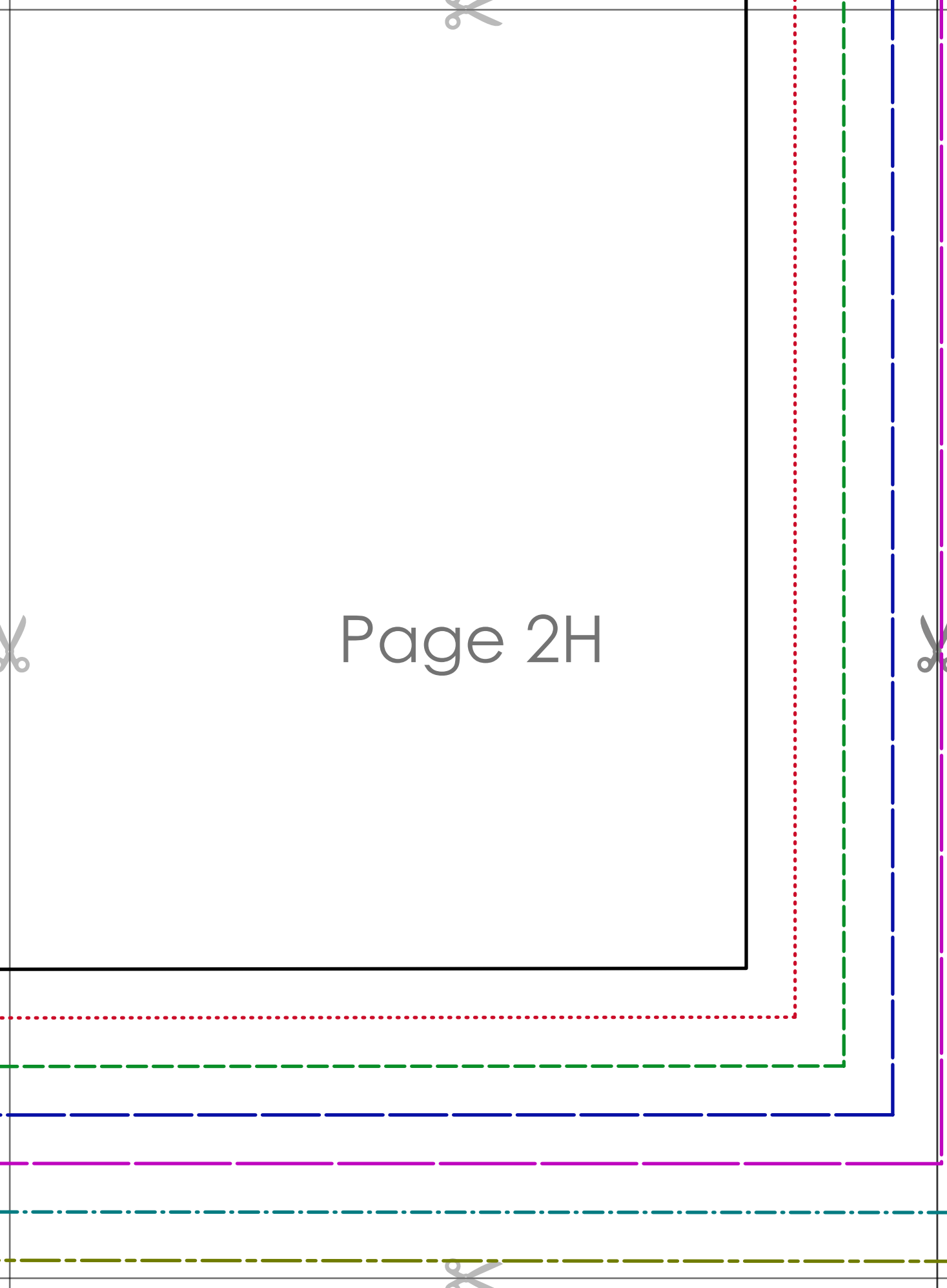




Page 2G

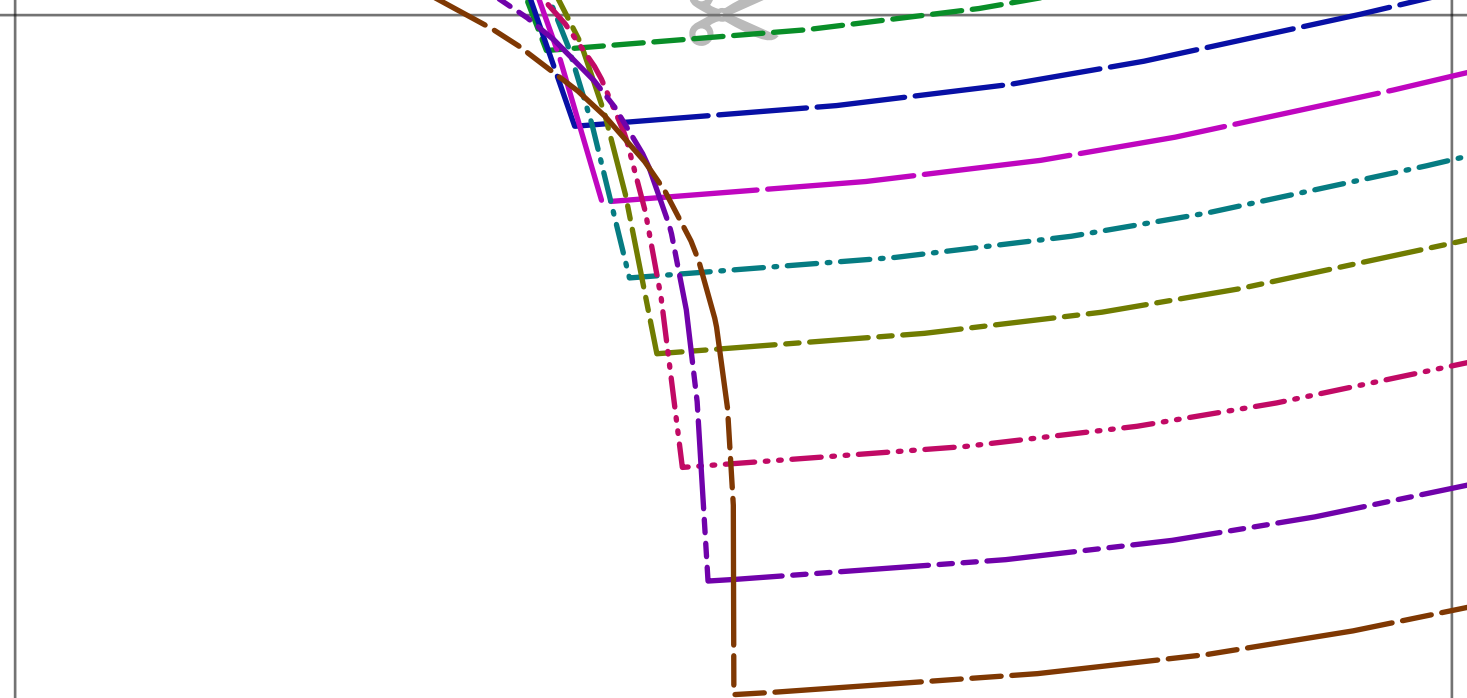


Page 2H

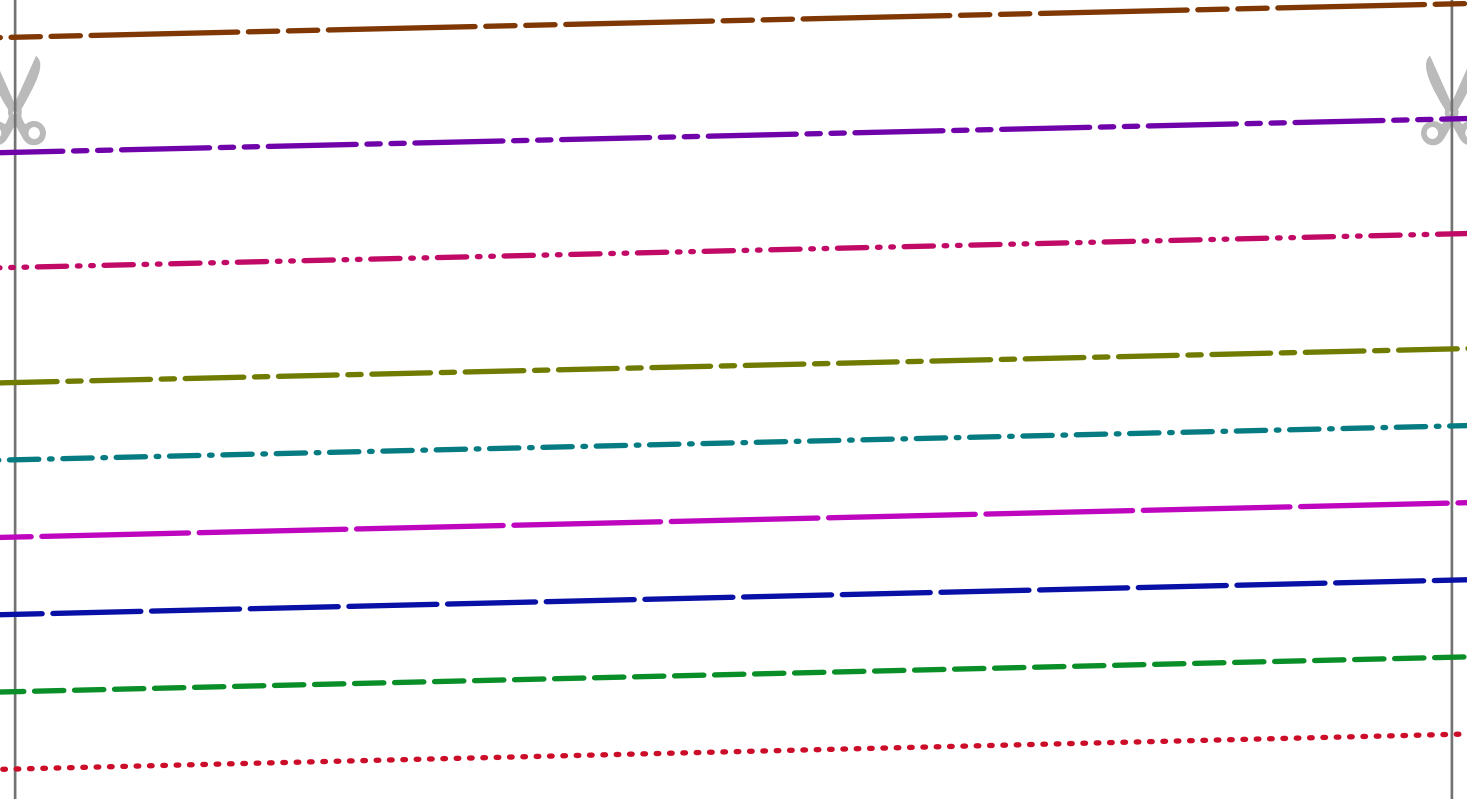


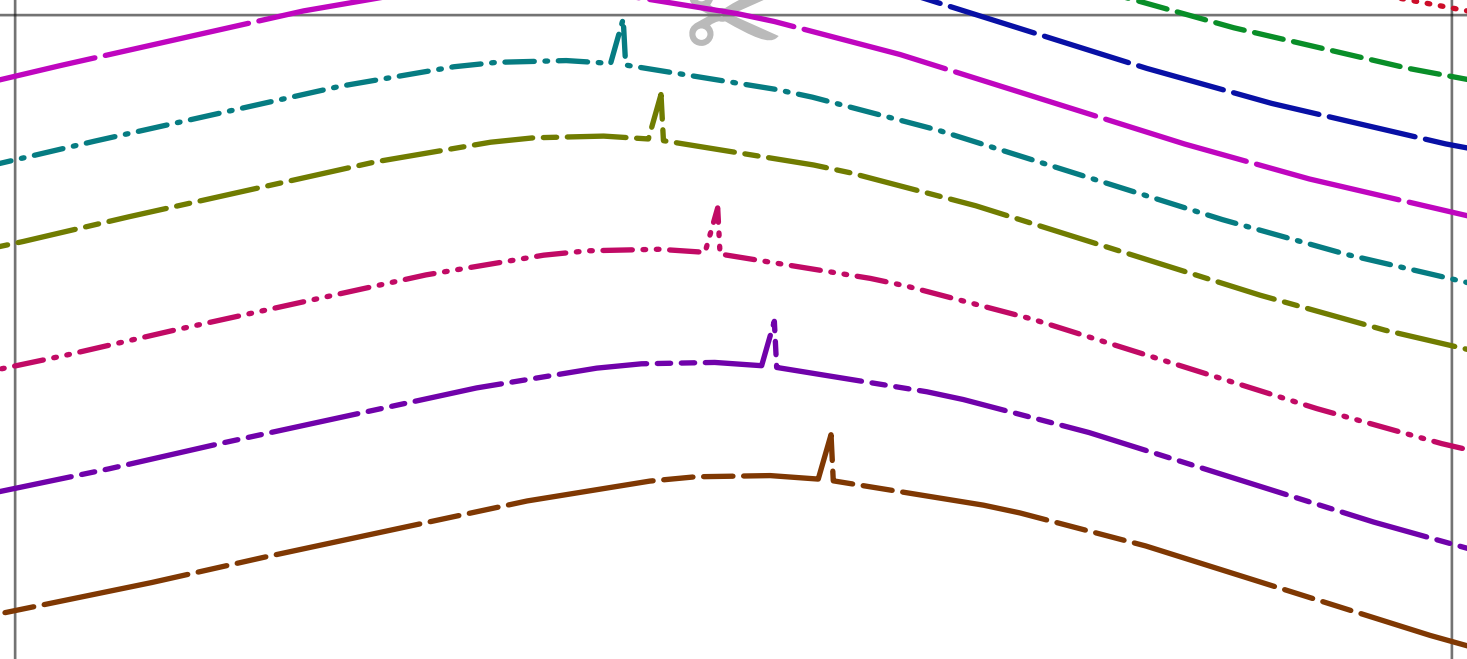
Page 3A



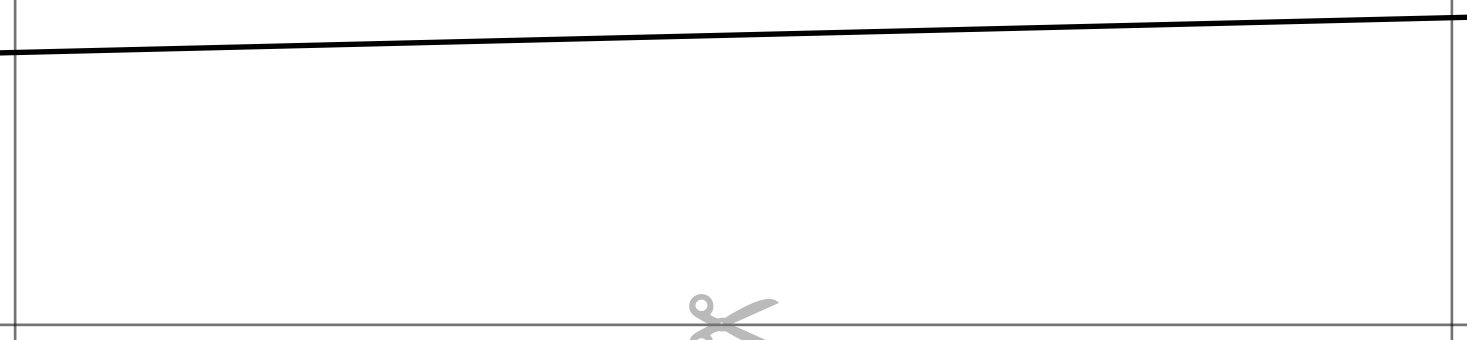
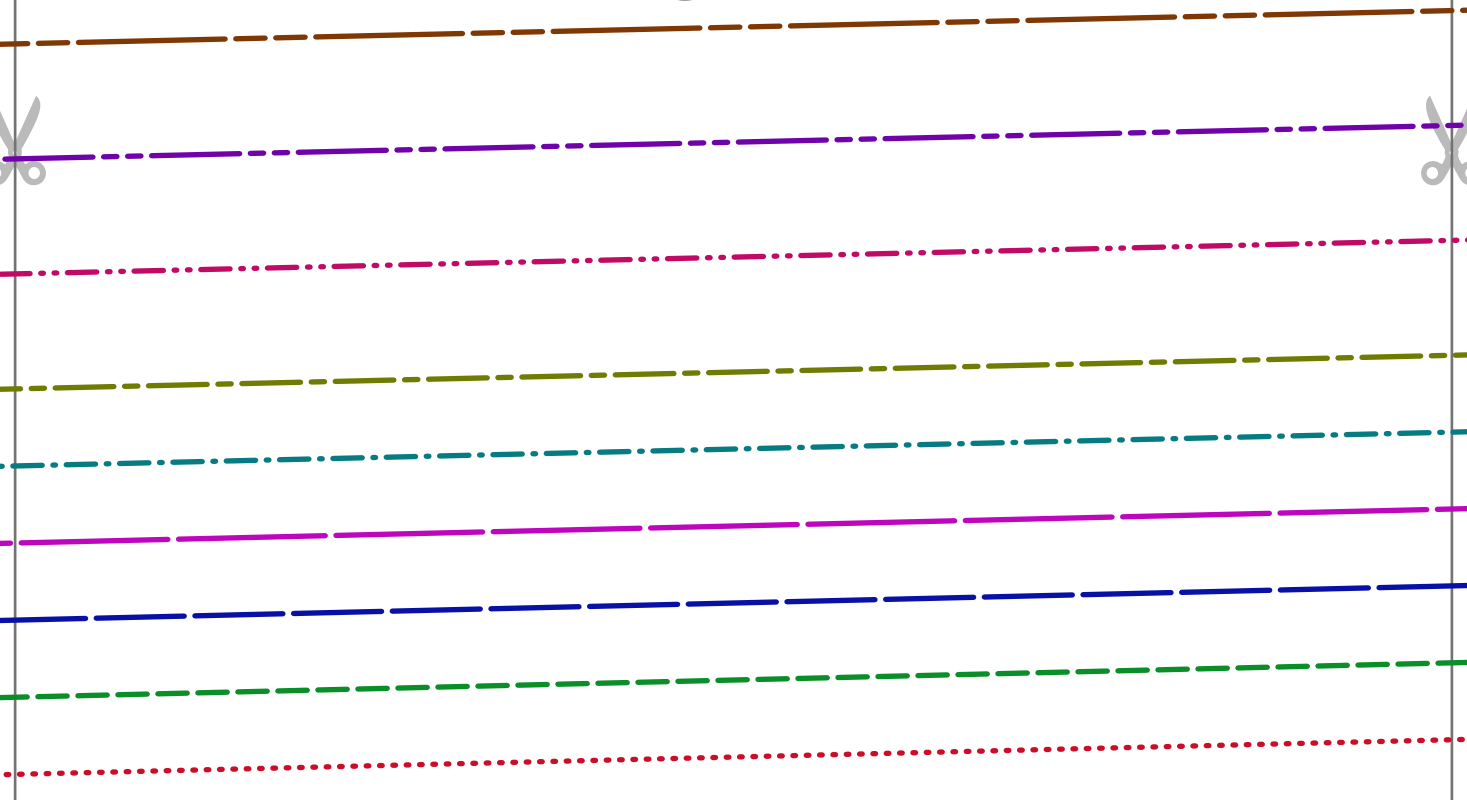


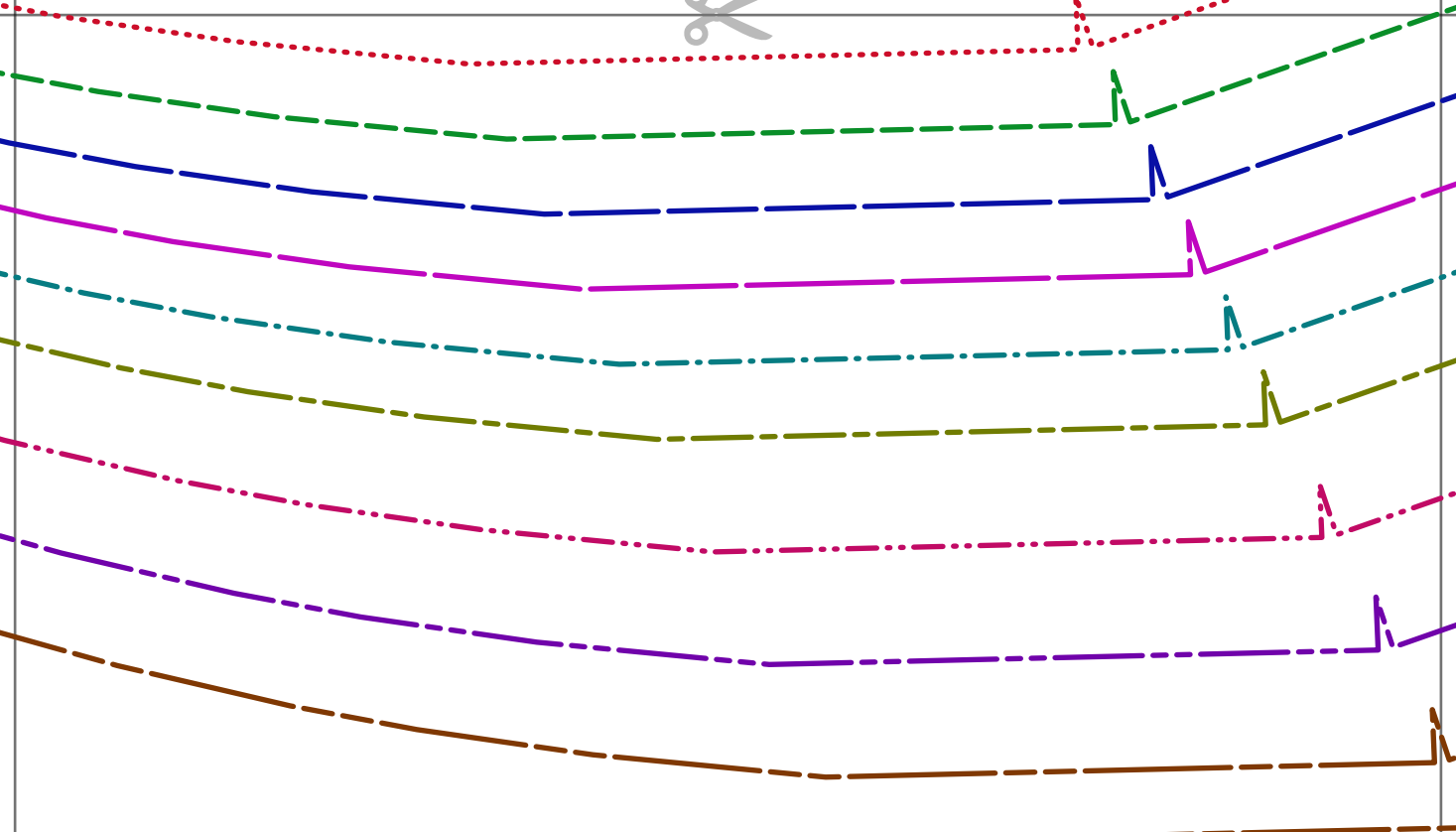
Page 3B



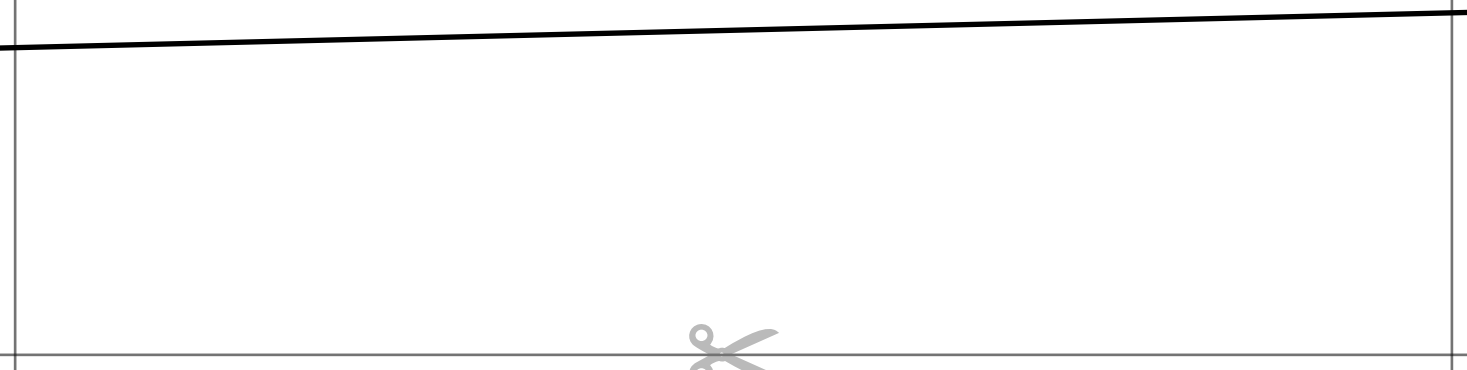


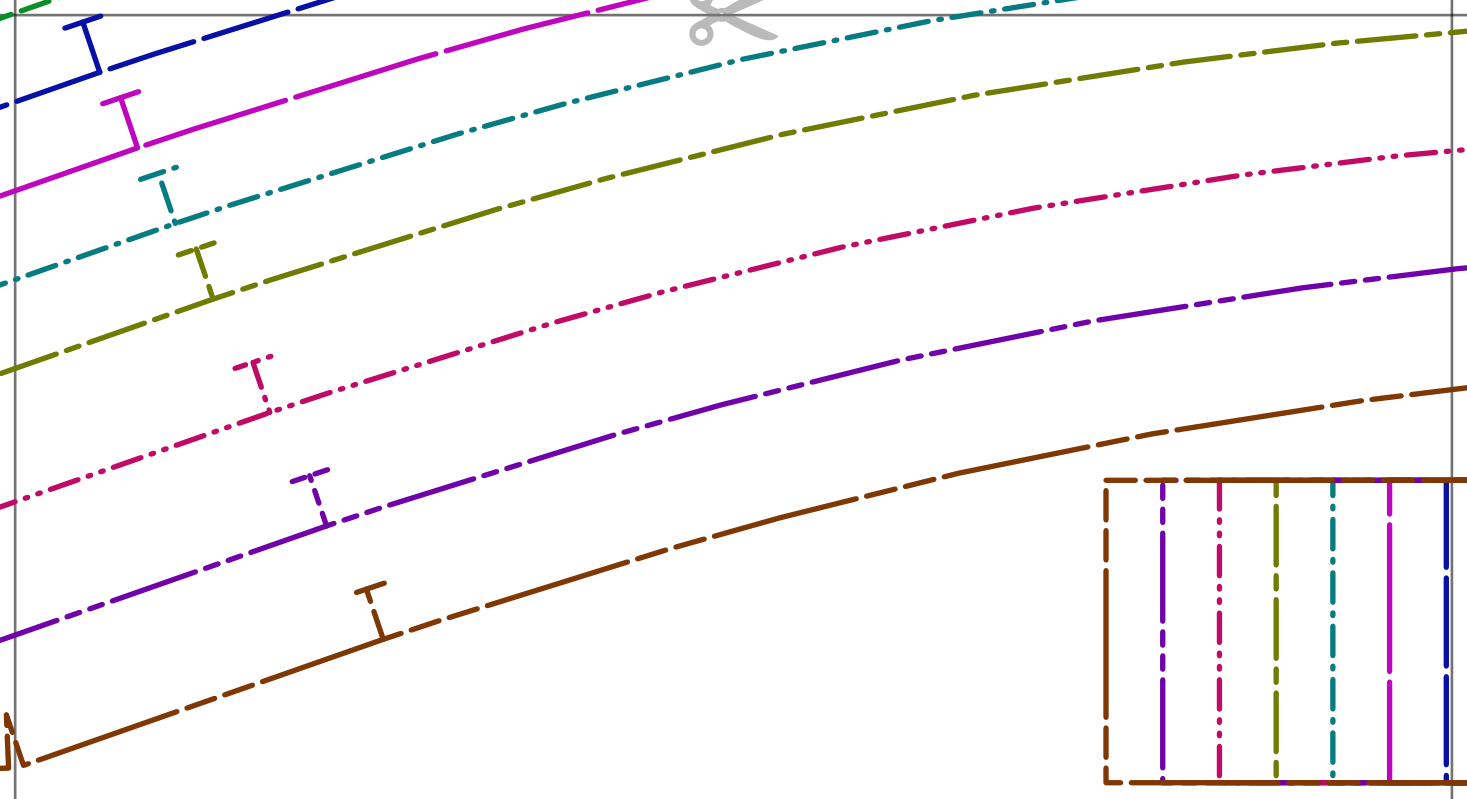
Page 3C



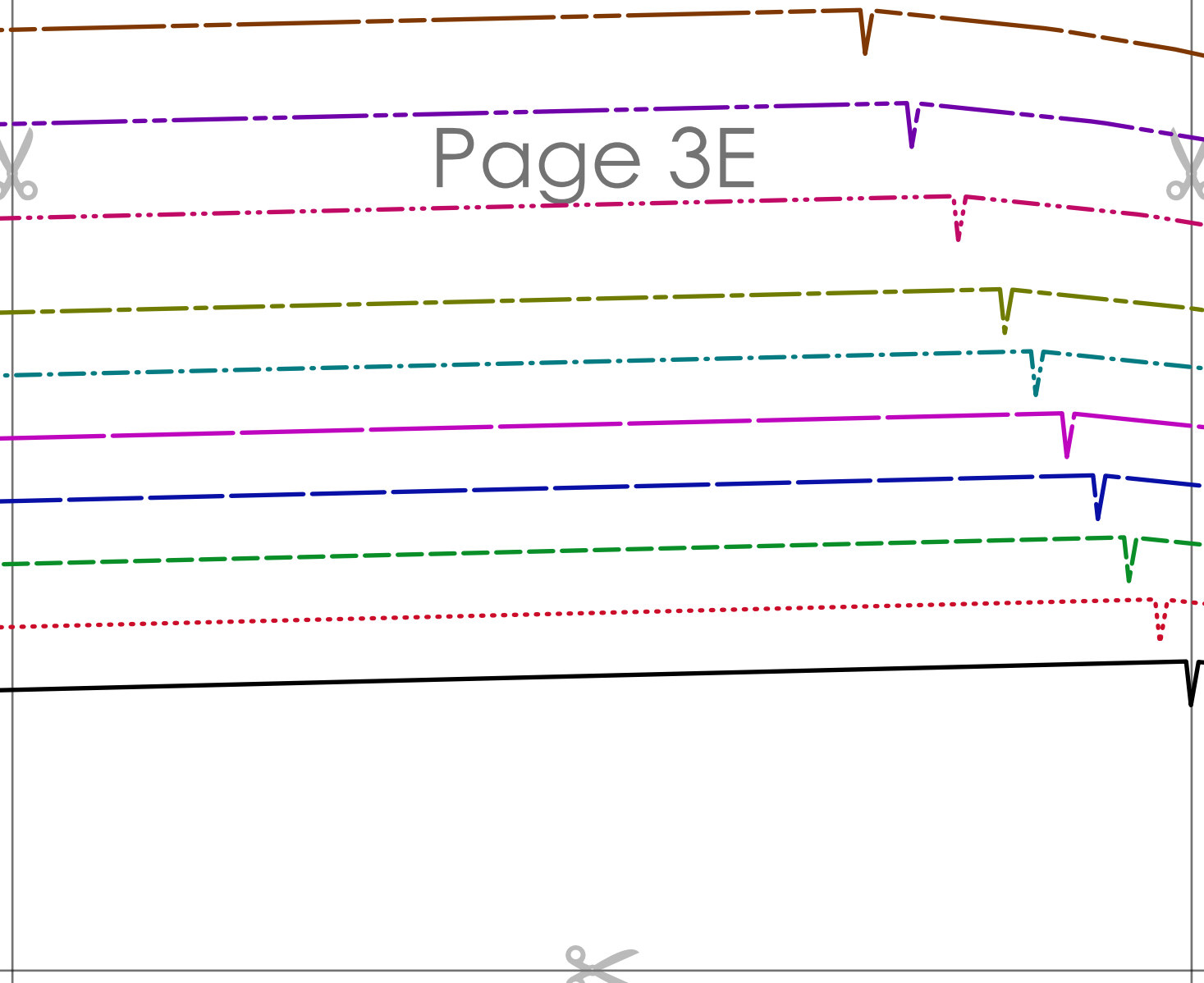


Page 3D



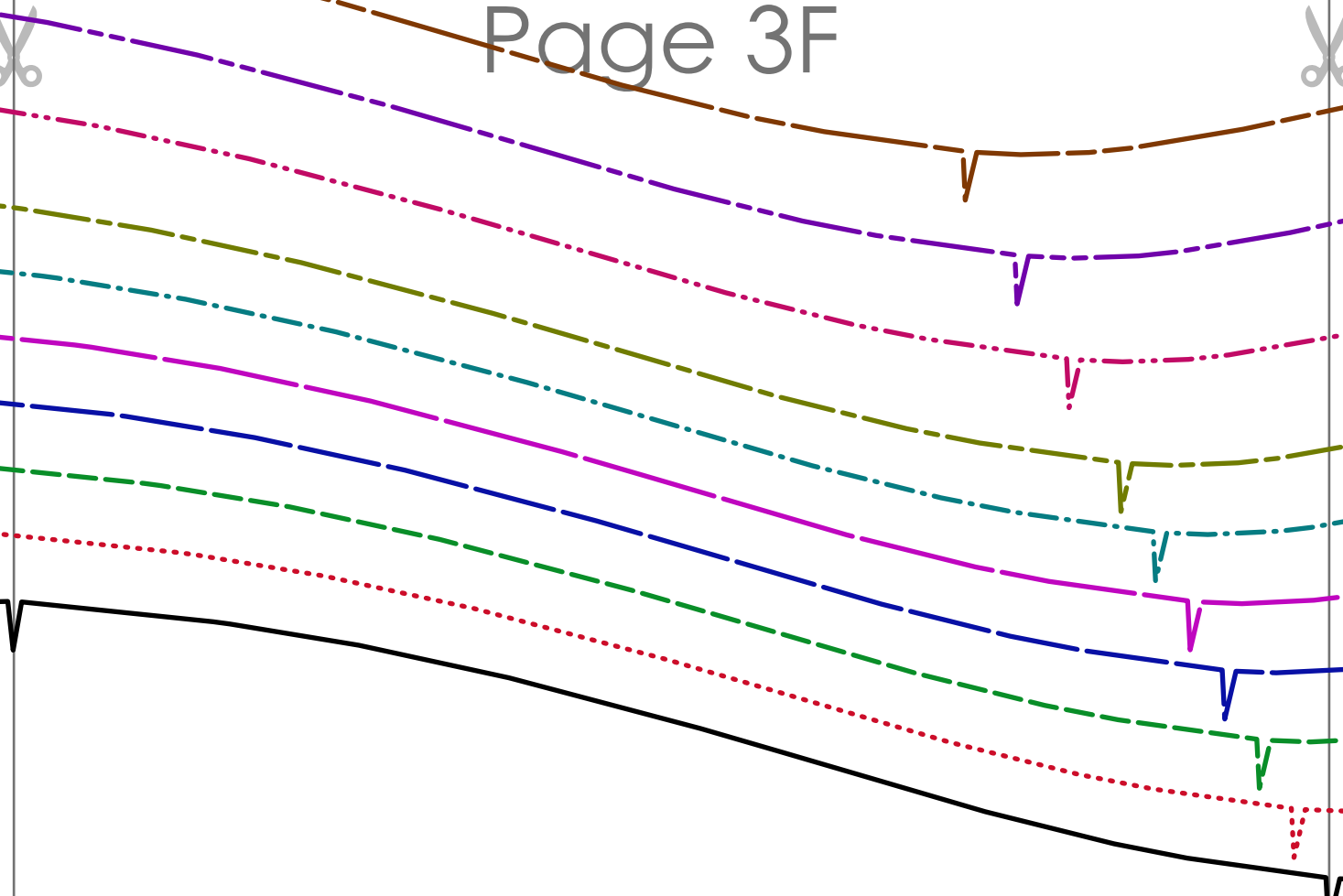


Page 3E





Page 3F



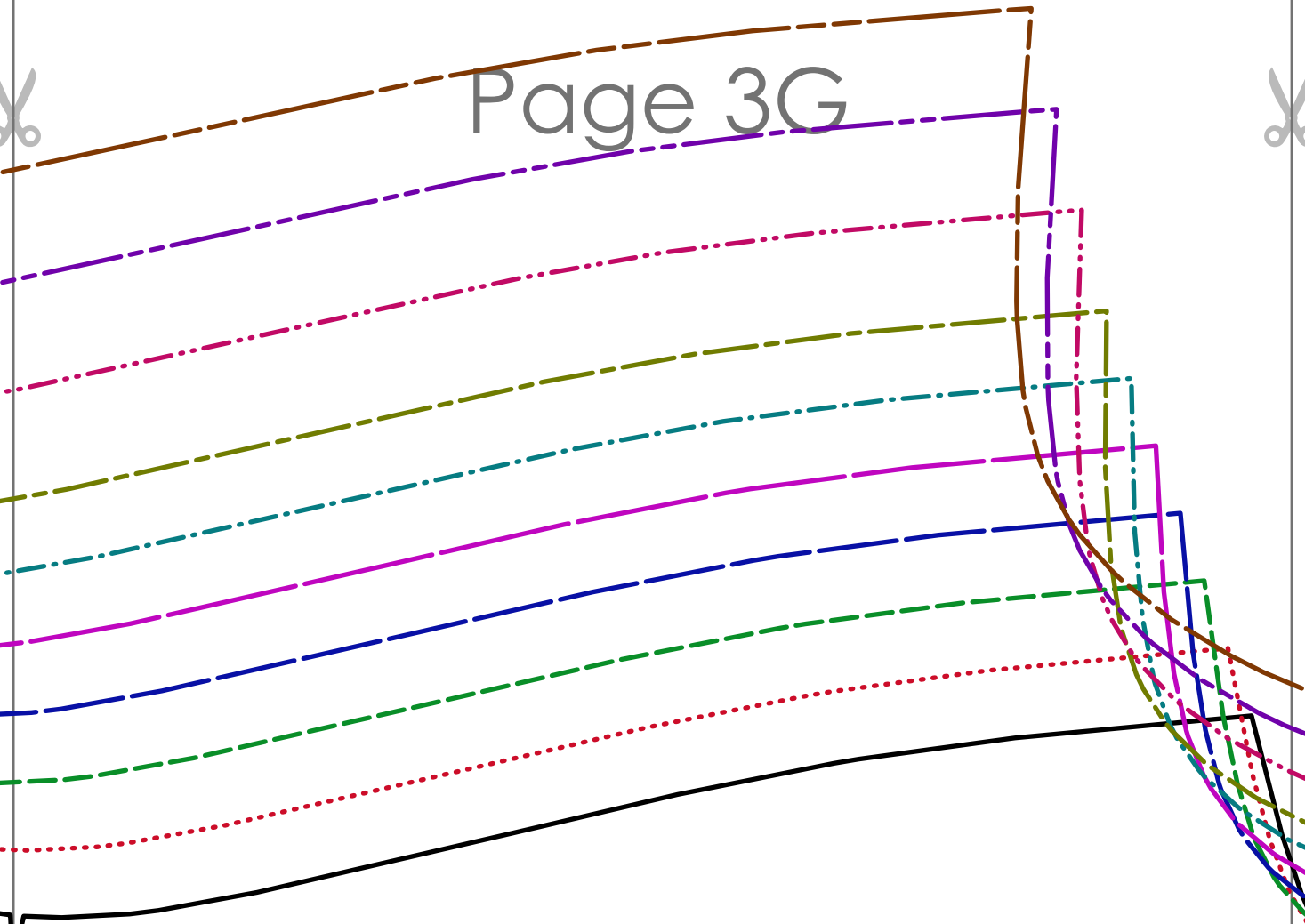




**LORENZA TIE DETAIL MAXI KNIT DRESS**  
1cm (3/8 in) seam allowance included

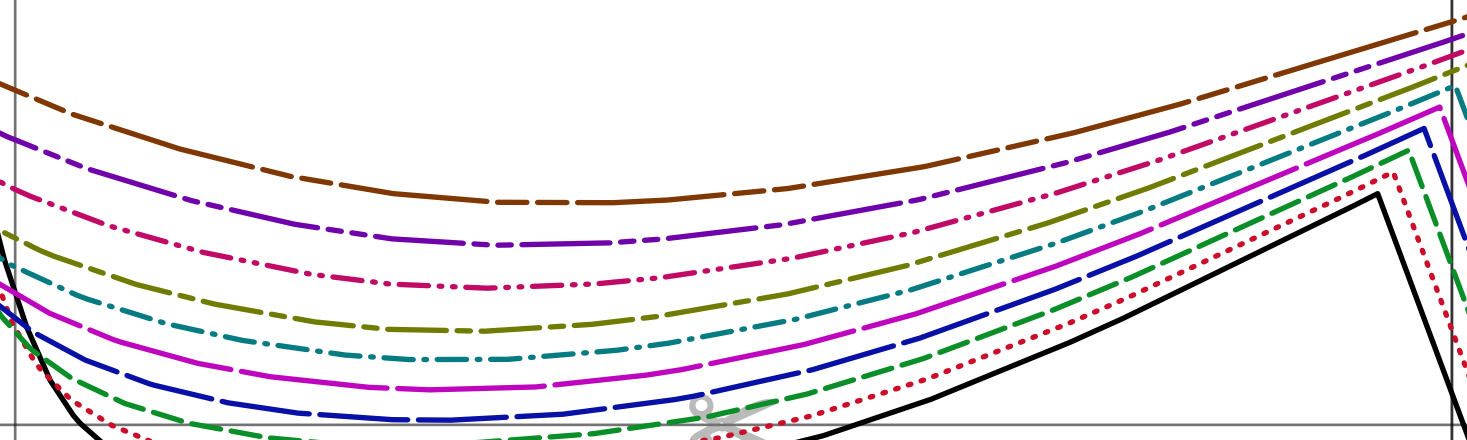
~~Size 20~~  
**NECK BINDING**  
cut 1

Page 3G





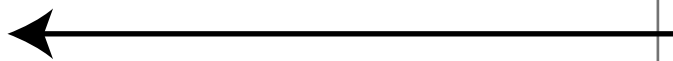
Page 3H

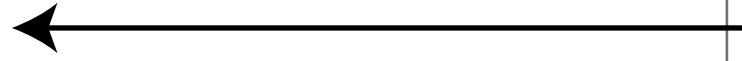


Page 4A



Page 4B





Page 4C

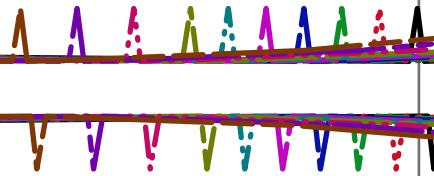




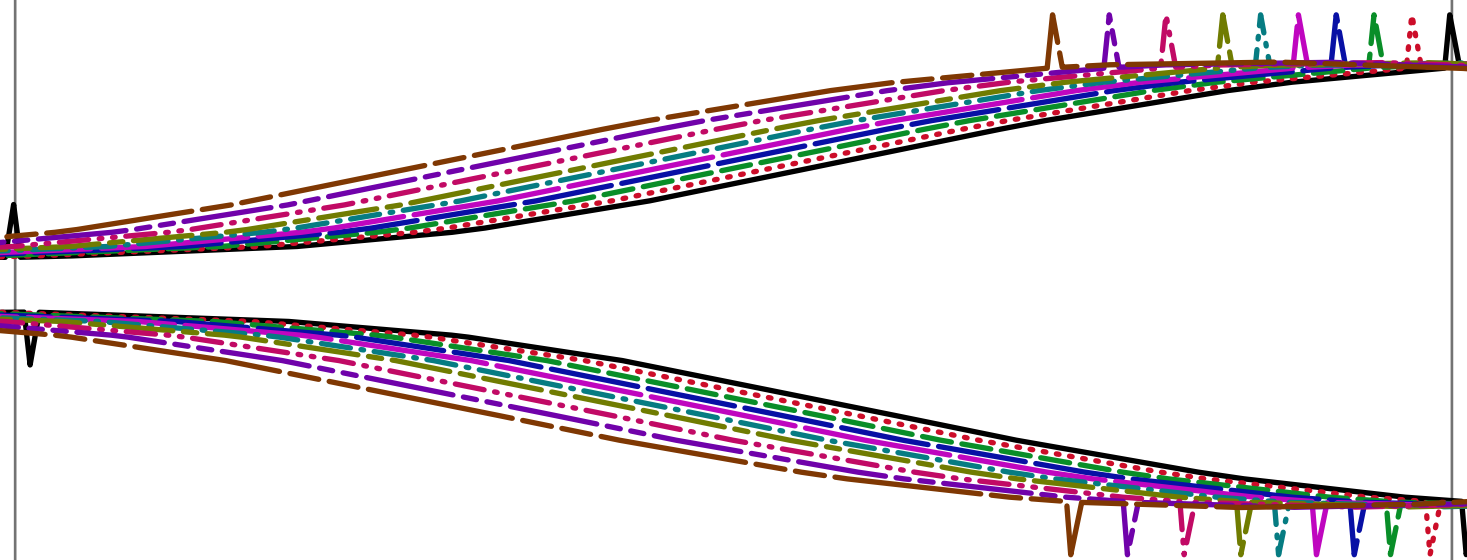
Page 4D



Page 4E



Page 4F





**LORENZA TIE DETAIL MAXI KNIT DRESS**  
**1cm (3/8 in) seam allowance included**

~~SEAMS~~

**LEFT BACK DRESS**

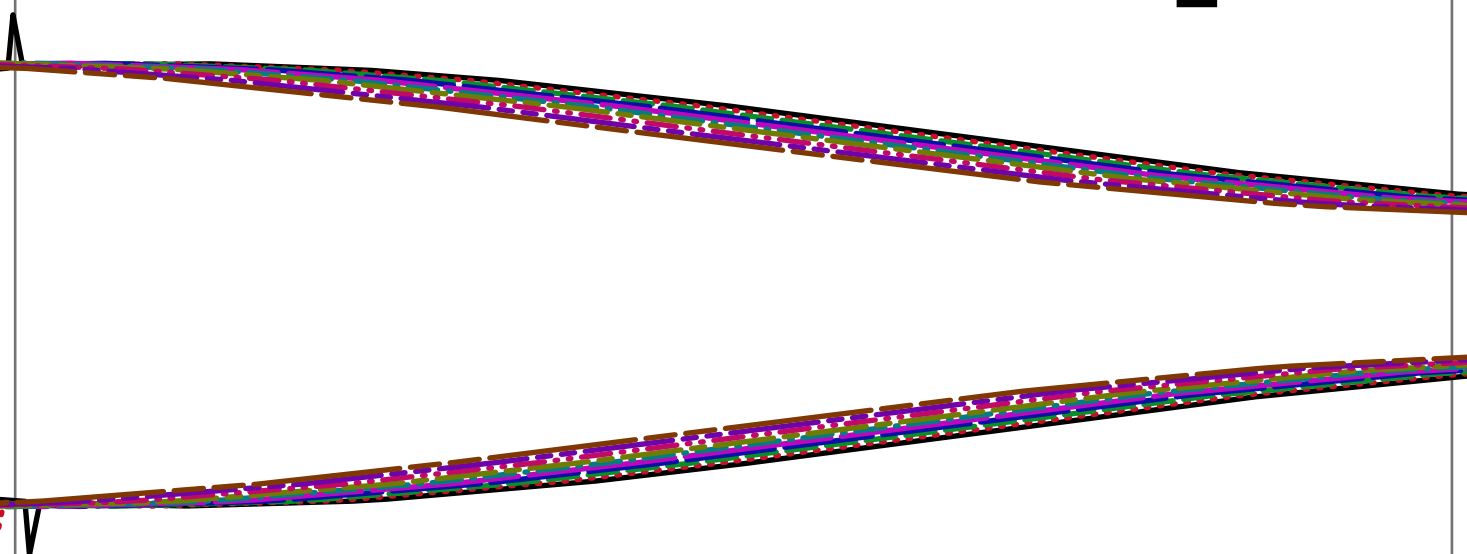
cut 1



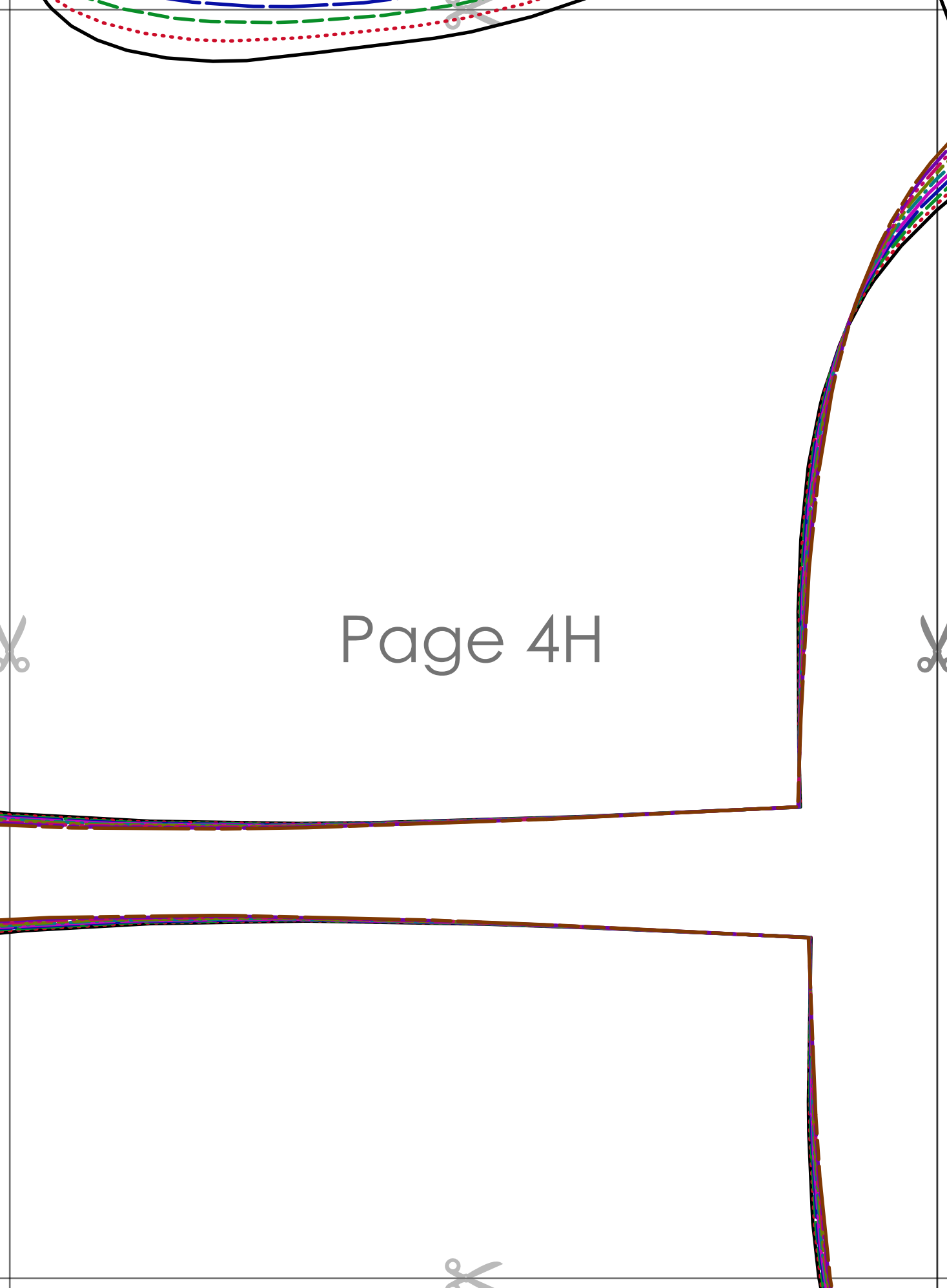
Page 4G

**LORENZA TIE**  
**1cm (3/8 in)**

**RIG**



Page 4H



Page 5A

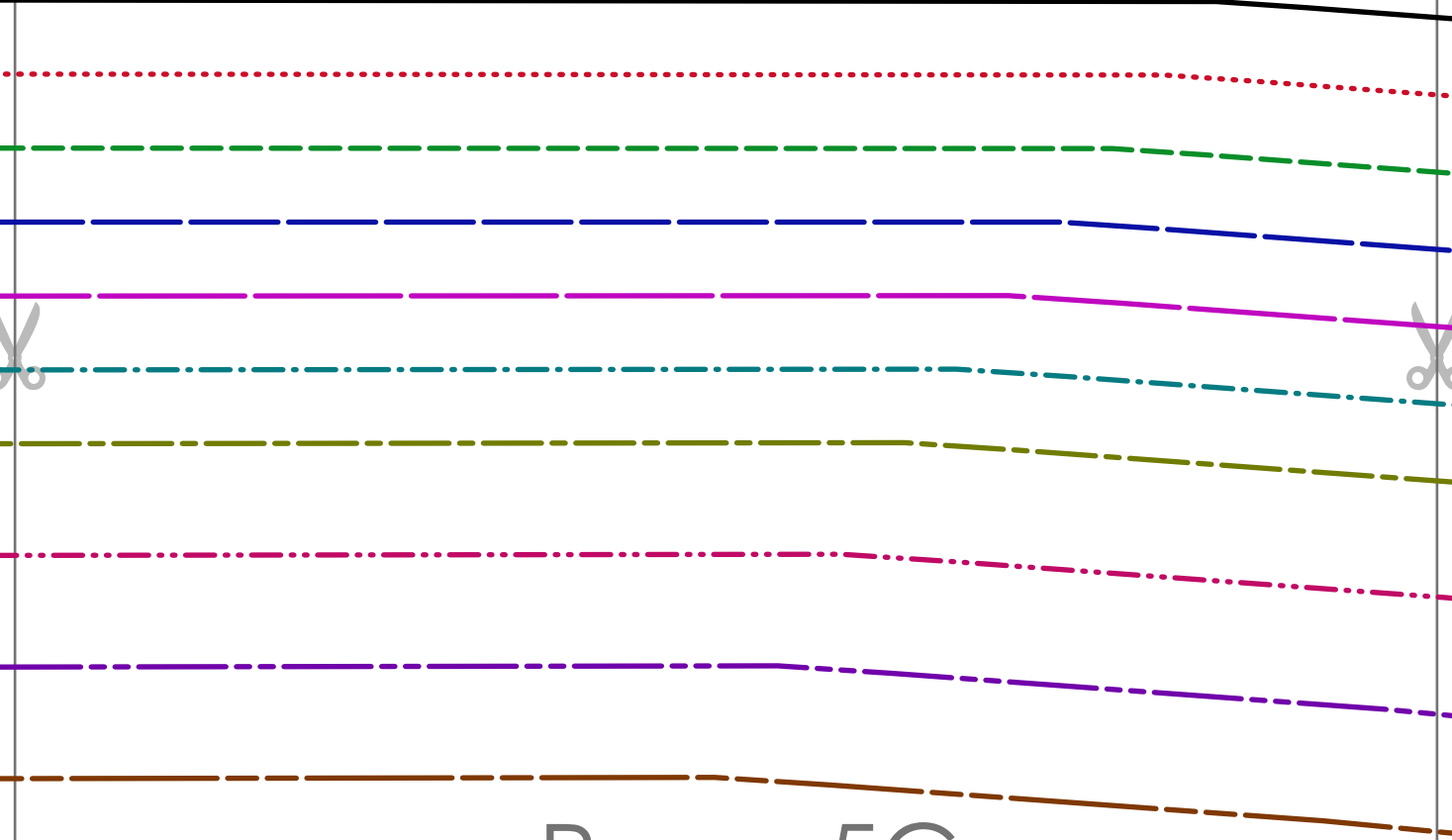


A series of horizontal lines for handwriting practice, including a solid black line at the top, followed by dotted red, dashed green, dashed blue, solid purple, dash-dot teal, dashed olive, dotted pink, dashed purple, and dashed brown lines.



Page 5B

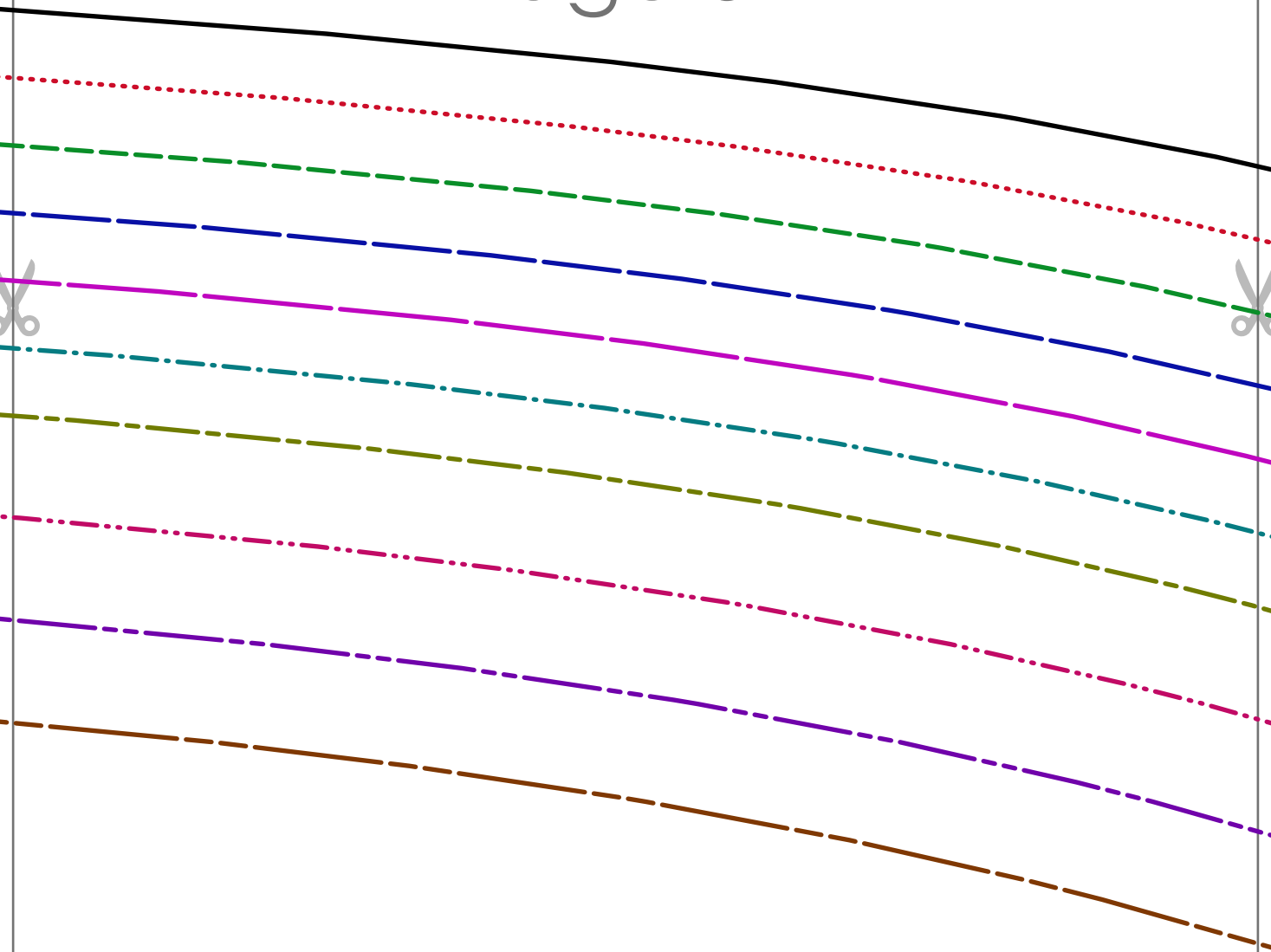




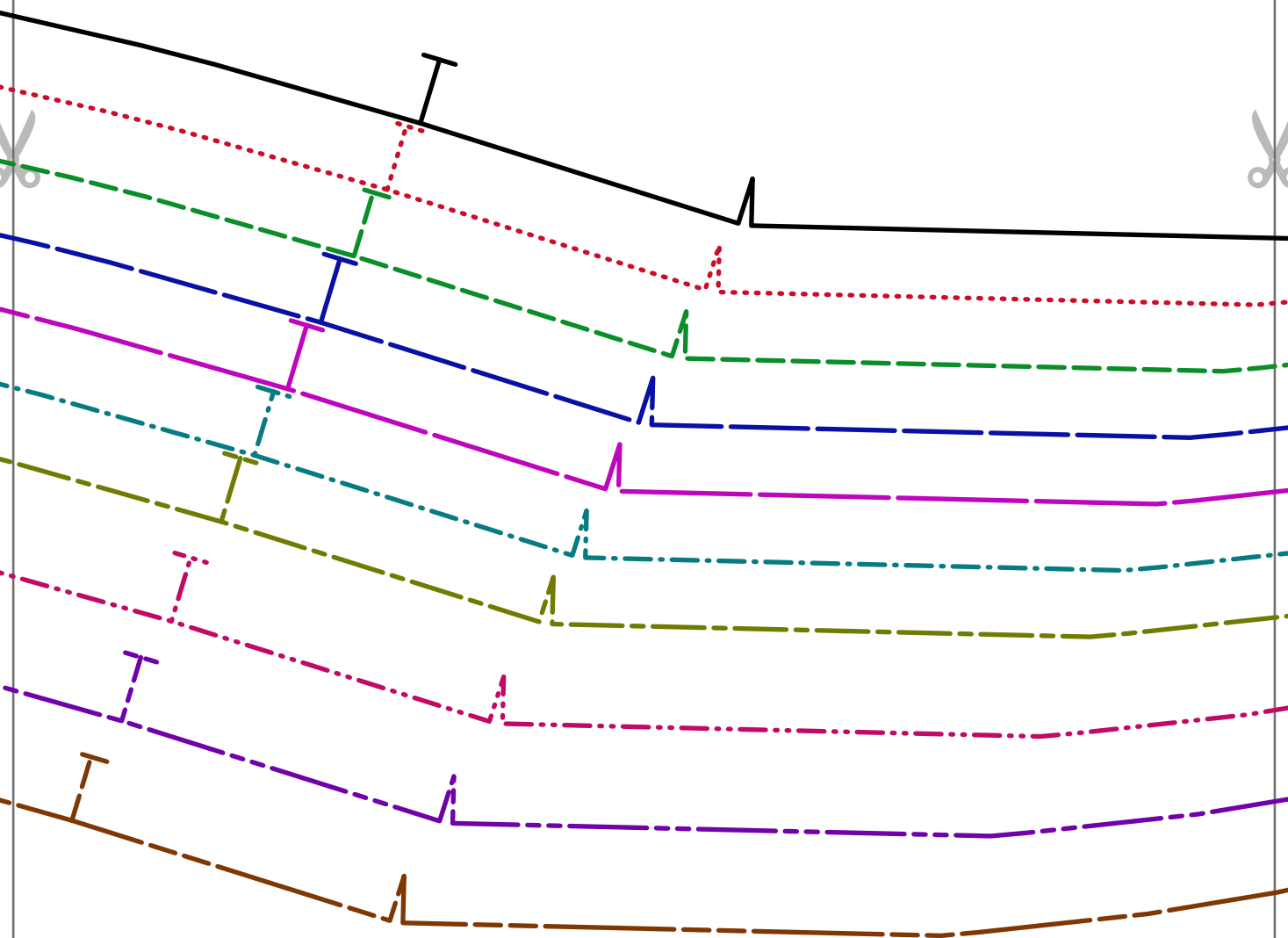
Page 5C



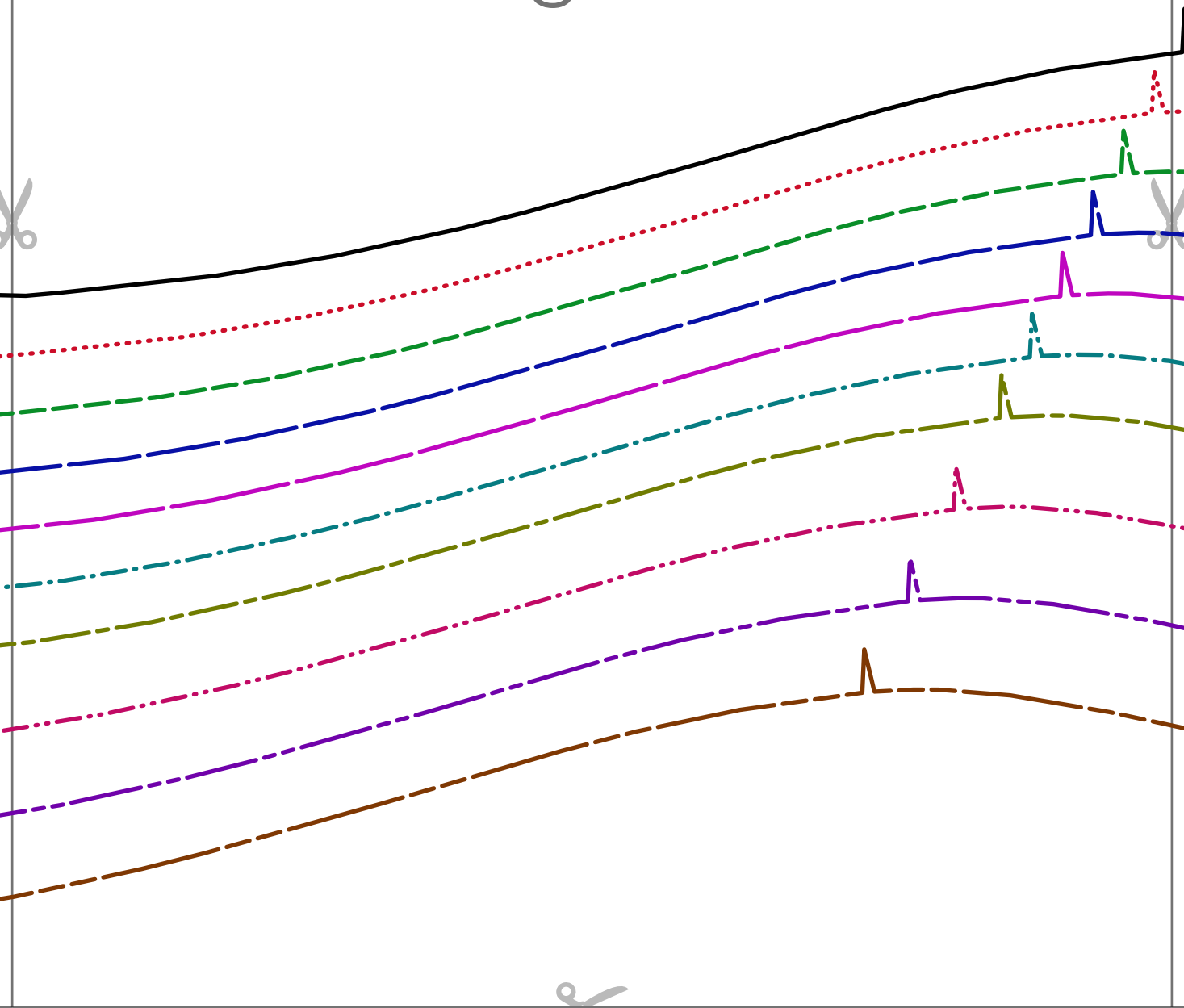
Page 5D



Page 5E



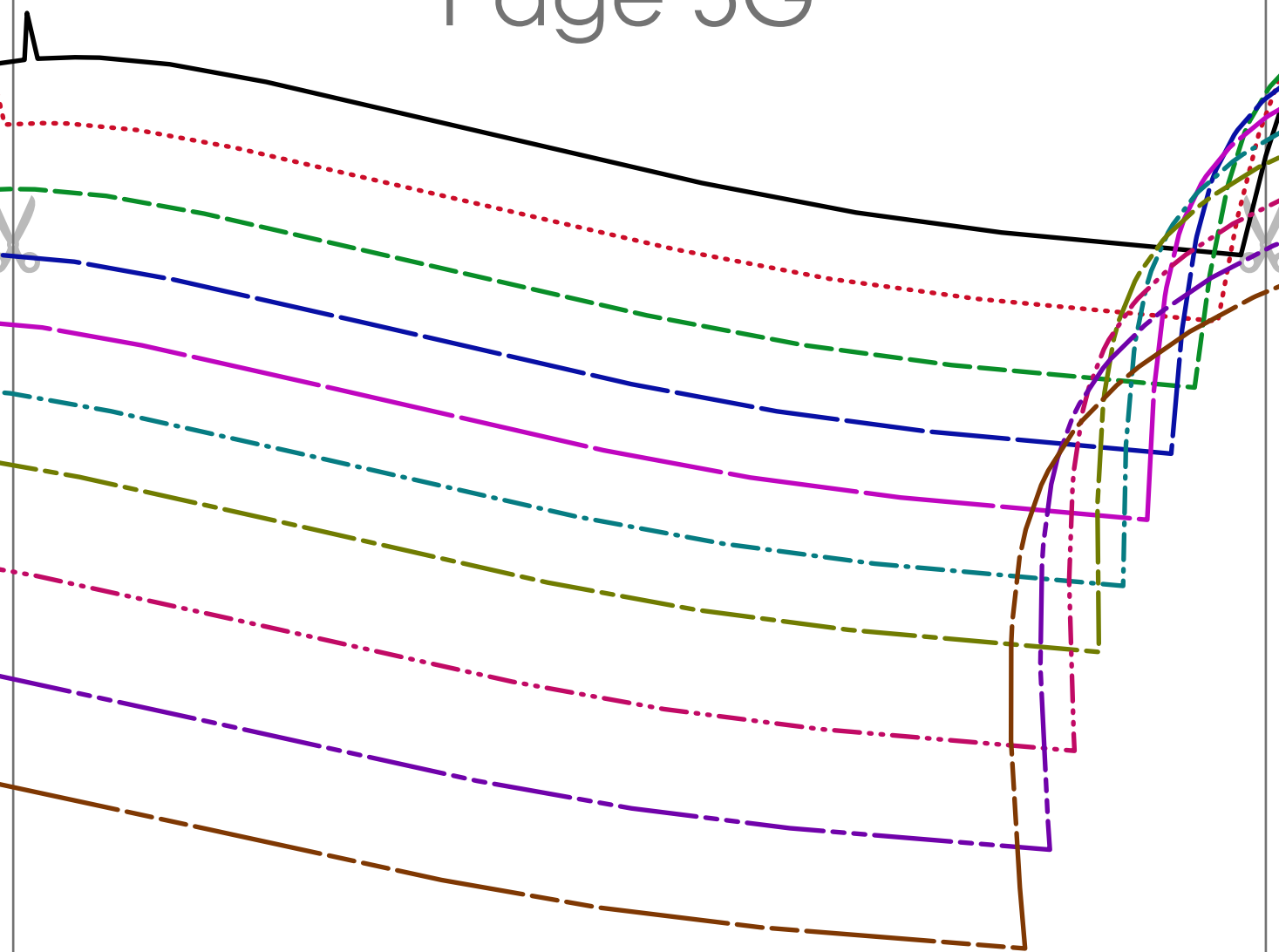
Page 5F

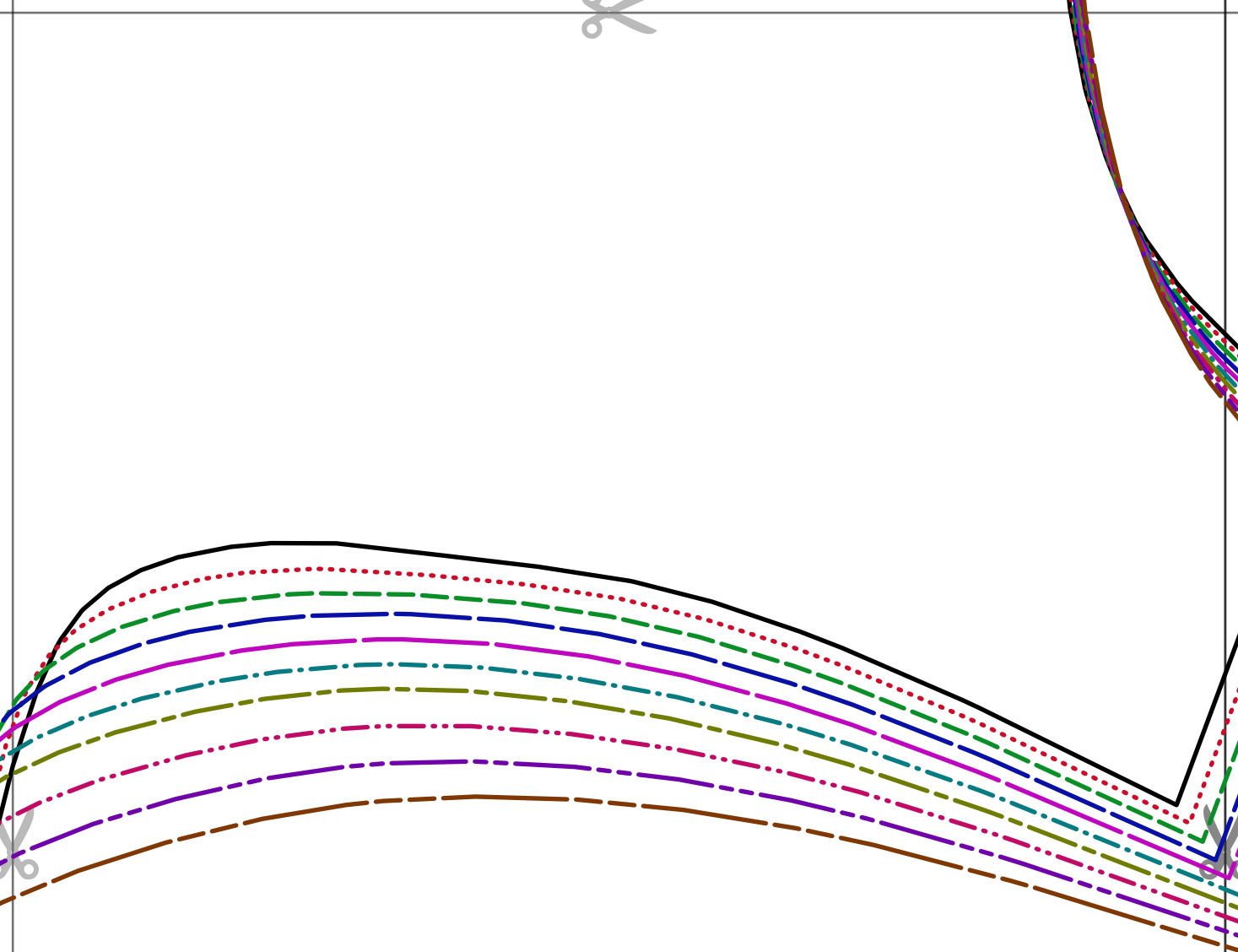




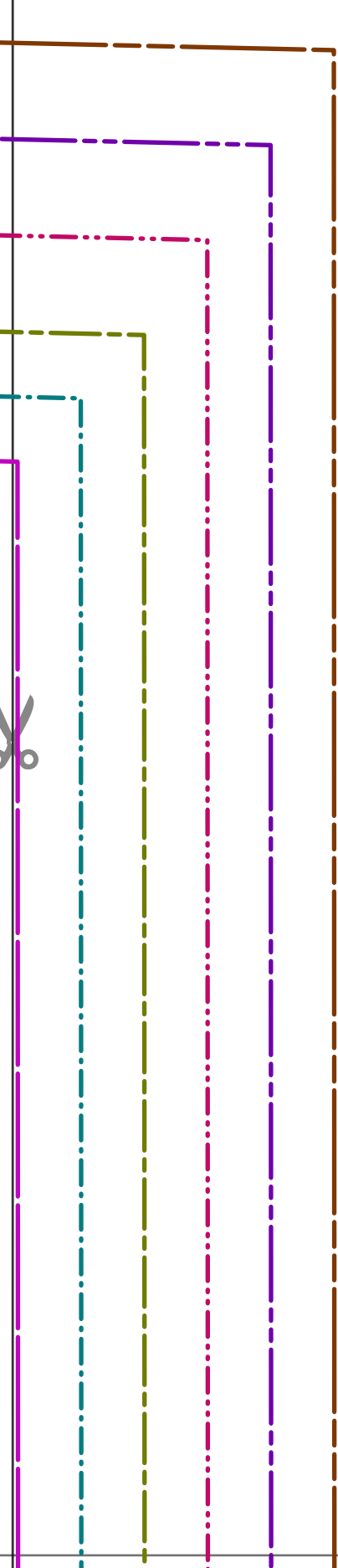
**THE DETAIL MAXI KNIT DRESS**  
**) seam allowance included**~~STRETCH KNIT~~**RIGHT BACK DRESS**  
**cut 1**

Page 5G





Page 5H



Page 11

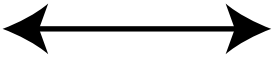




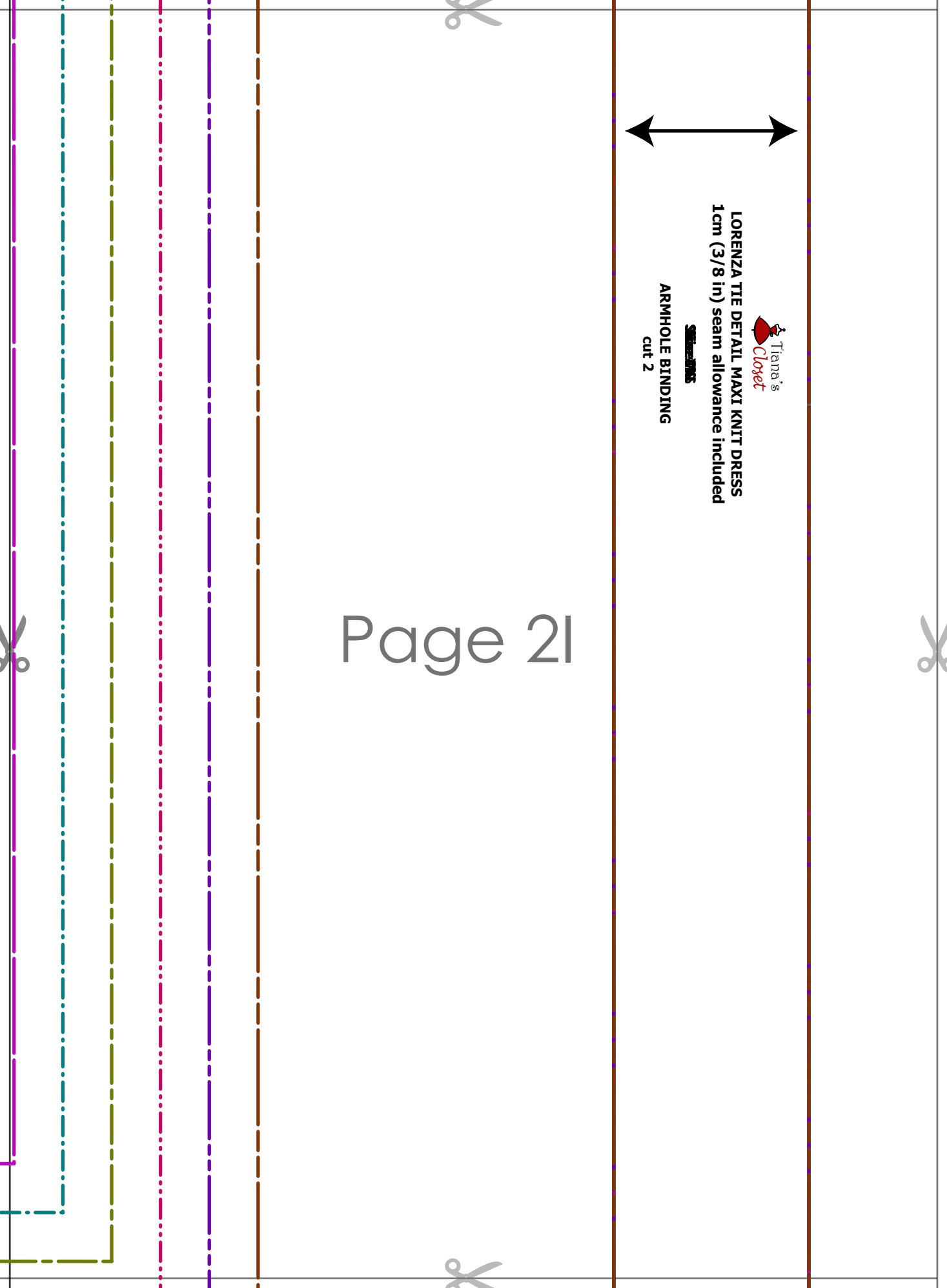
**LORENZA TIE DETAIL MAXI KNIT DRESS**  
1cm (3/8 in) seam allowance included

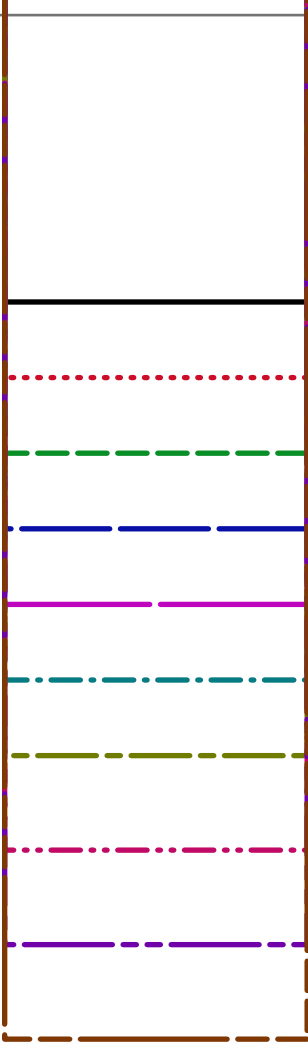
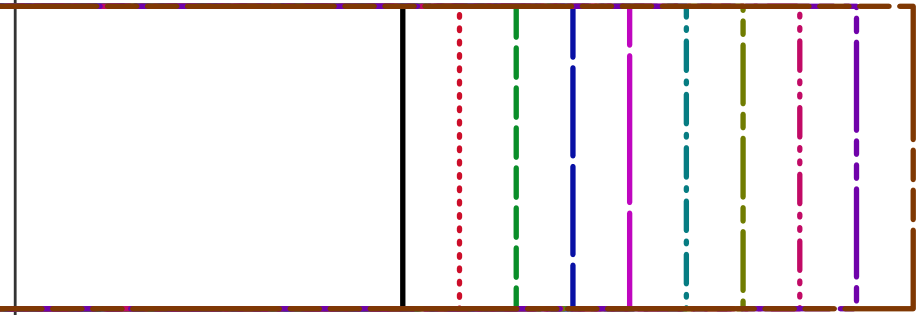
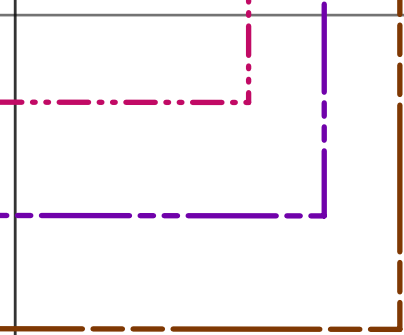
~~Size 2-10~~

**ARMHOLE BINDING**  
cut 2

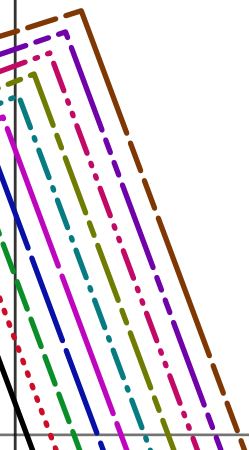


Page 21





Page 31



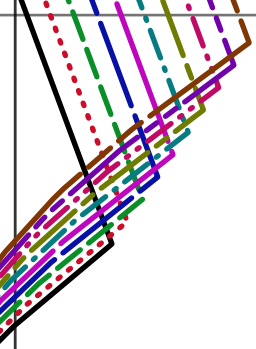


**LORENZA TIE DETAIL MAXI KNIT DRESS**  
**1cm (3/8 in) seam allowance included**

**~~SKIRT~~**

**TIE RIBBON**  
**cut 2**

Page 41



Page 51

