

PRINTING INSTRUCTIONS

- Tiana's Closet sewing patterns are made in Layered PDF format, which means all sizes are saved in one file and can be shown or hidden. It is recommended to use Adobe Acrobat Reader (paid version on Mac OS, free on Windows) or Foxit PDF Reader (free, works on Windows only) to read the file correctly. In order to choose the desired size(s), go to Layers tab of your PDF reader, uncheck all boxes except for the desired size(s) and the box Print for all sizes.

- When printing the pattern, go to Print settings, in the tab Scale choose Custom scale: 100% (or Scaling: None or Actual Size) to print true to size. Note: some computers print smaller than true size even when you choose 100% scale, so you will have to adjust the scale to a little larger than 100% and measure the test square until you get the true size using the test rulers

- Always print the first page of the file and measure to avoid waste of paper.

- After printing the pattern, cut the pages along the lines with scissors icon, align and tape the pages according to their sequences. For example, pages 1A, 1B, 1C, 1D... are line up in one row from left to right, pages 1A, 2A, 3A, 3B... are lined up in one column from up to down.

- You can find photo instruction for printing sewing patterns on Tiana's Closet website:

<https://tianscloset.com/index.php/how-to-print-tianas-closet-patterns/>

SIZE TABLE

WOMEN'S CLOTHING SIZE

- Sizing is based on body measurements.

- If between sizes, size up for woven fabric, size down for knit fabric.

Unit: centimeter

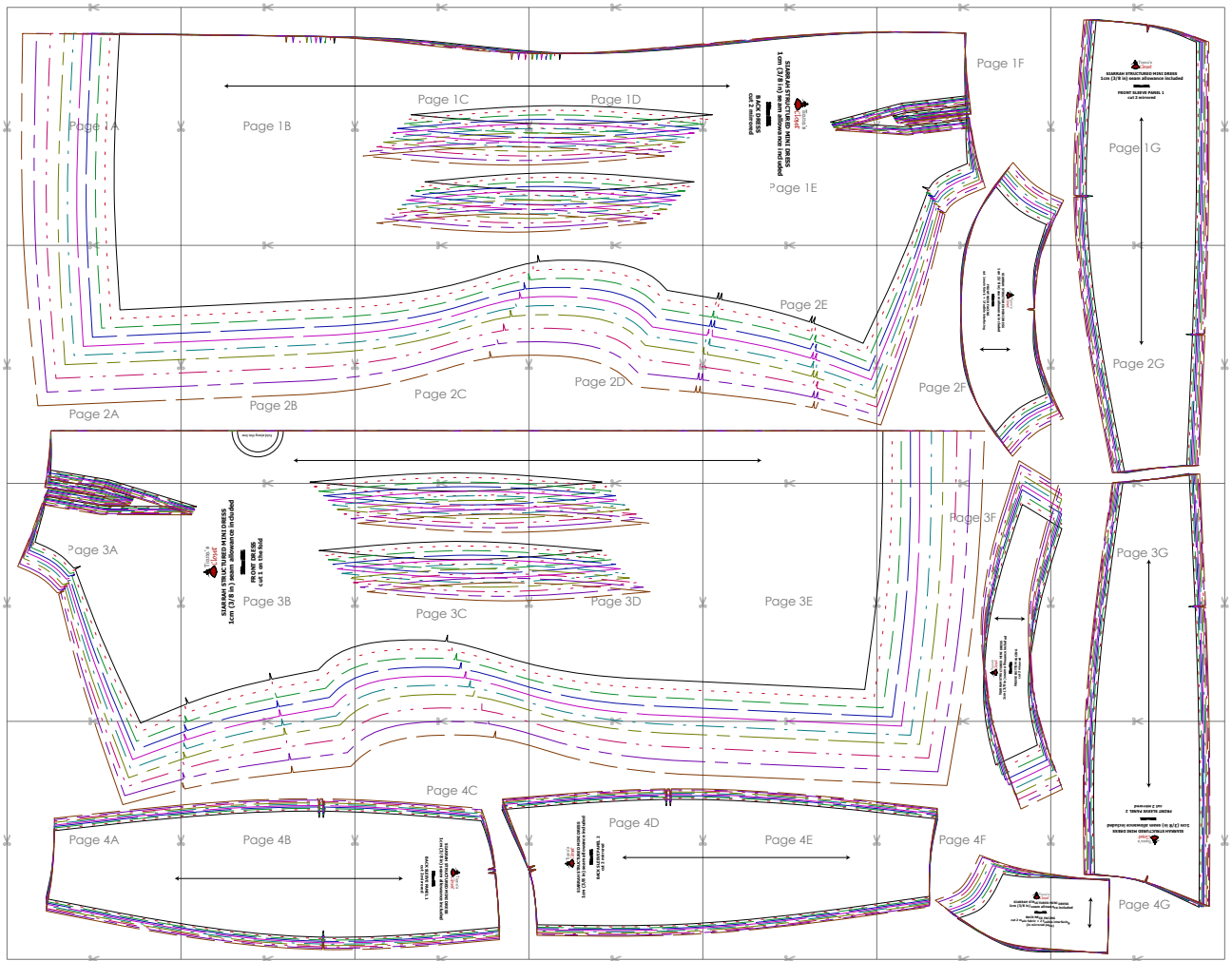
| Size | XXS | XS | S | M | L | XL | XXL | 3XL | 4XL | 5XL |
|-----------------------|-----|----|----|-----|-----|-----|-----|------|-----|------|
| Bust | 80 | 84 | 88 | 92 | 96 | 100 | 104 | 110 | 116 | 122 |
| Waist | 60 | 64 | 68 | 72 | 76 | 80 | 84 | 90 | 96 | 102 |
| Hip | 88 | 92 | 96 | 100 | 104 | 108 | 112 | 118 | 124 | 130 |
| Cross shoulder | 35 | 36 | 37 | 38 | 39 | 40 | 41 | 42.5 | 44 | 45.5 |

Unit: inch

| Size | XXS | XS | S | M | L | XL | XXL | 3XL | 4XL | 5XL |
|-----------------------|------|------|------|------|------|------|------|------|------|------|
| Bust | 31.5 | 33.1 | 34.6 | 36.2 | 37.8 | 39.4 | 40.9 | 43.3 | 45.7 | 48.0 |
| Waist | 23.6 | 25.2 | 26.8 | 28.3 | 29.9 | 31.5 | 33.1 | 35.4 | 37.8 | 40.2 |
| Hip | 34.6 | 36.2 | 37.8 | 39.4 | 40.9 | 42.5 | 44.1 | 46.5 | 48.8 | 51.2 |
| Cross shoulder | 13.8 | 14.2 | 14.6 | 15.0 | 15.4 | 15.7 | 16.1 | 16.7 | 17.3 | 17.9 |

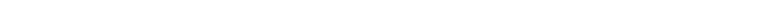
For more ideas and free sewing patterns, visit <http://tianscloset.com>

PATTERN LAYOUT

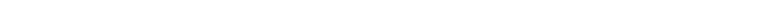


LEGEND

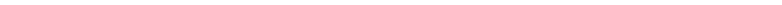
SIZE XXS



SIZE XS



SIZE S



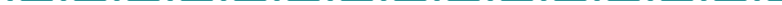
SIZE M



SIZE L



SIZE XL



SIZE XXL



SIZE 3XL

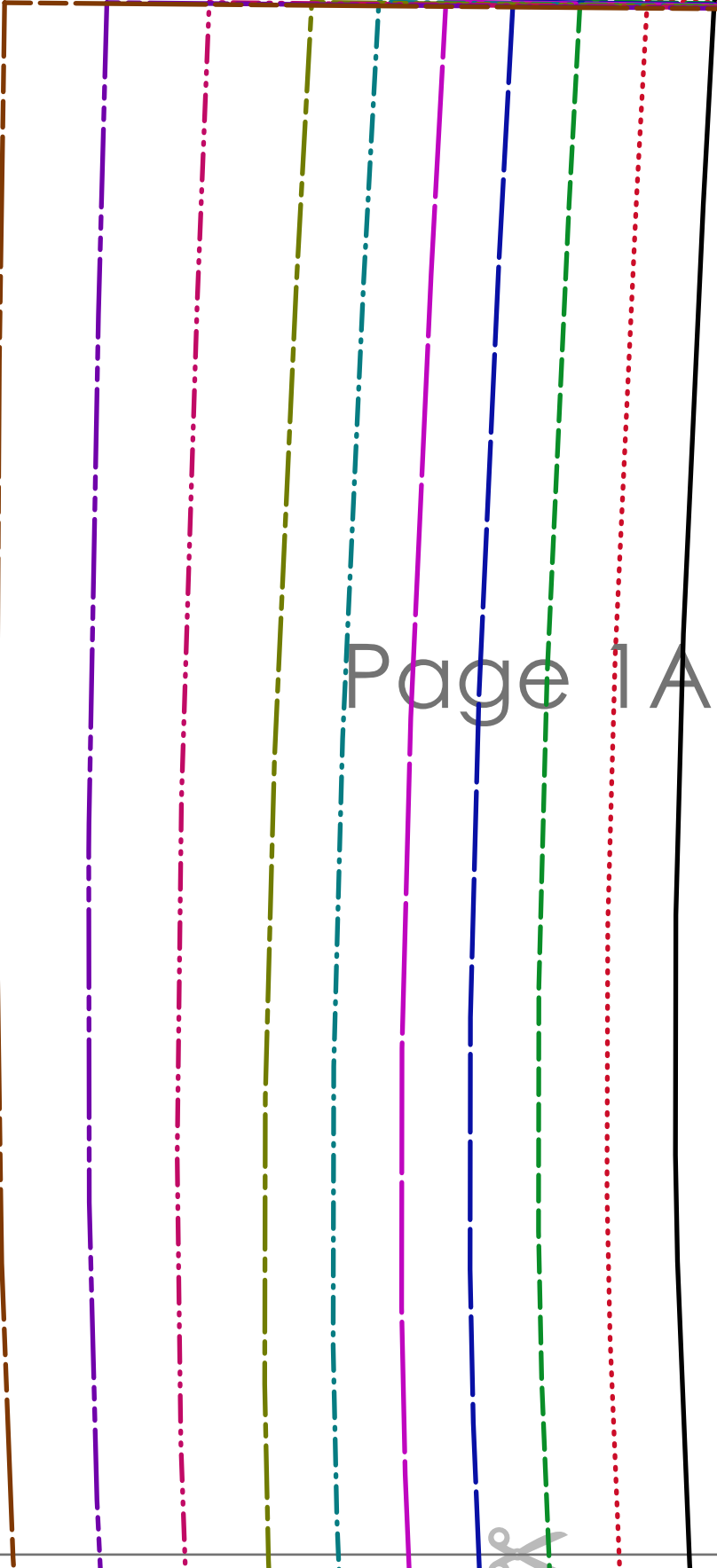


SIZE 4XL



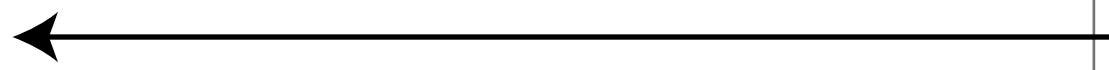
SIZE 5XL





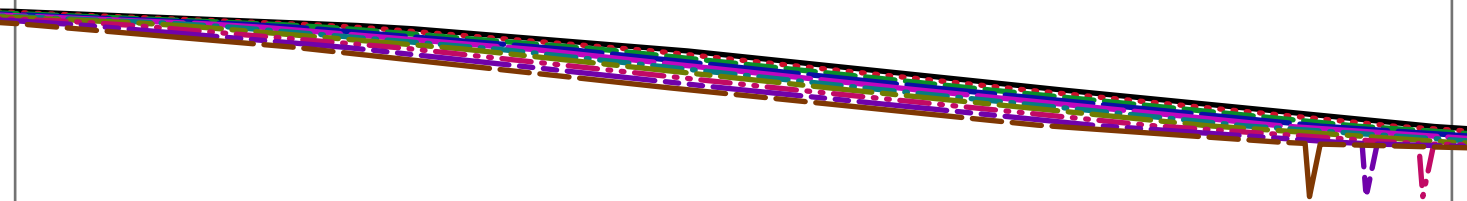
Page 1 A



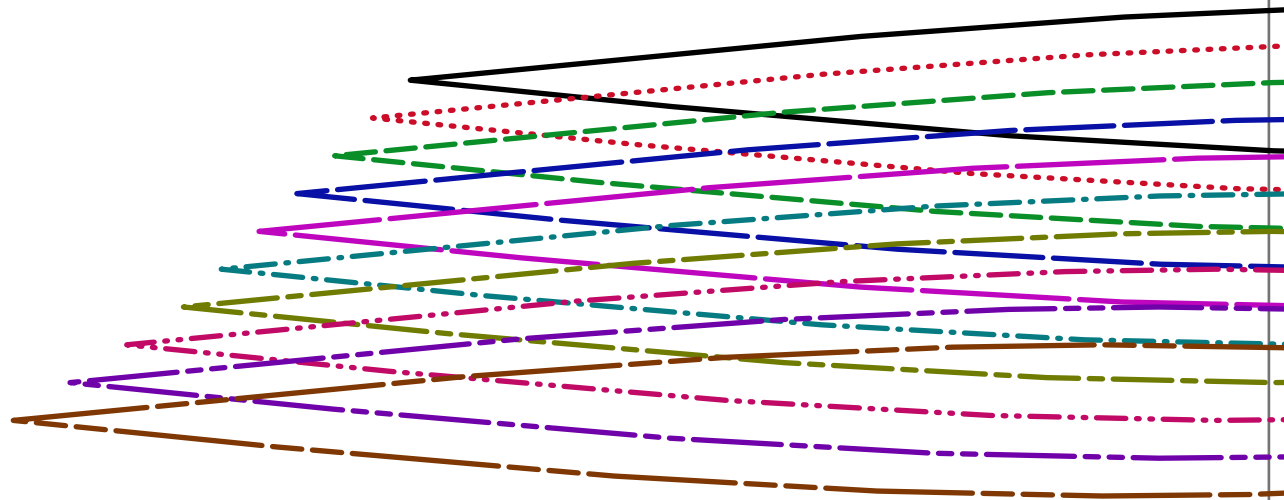
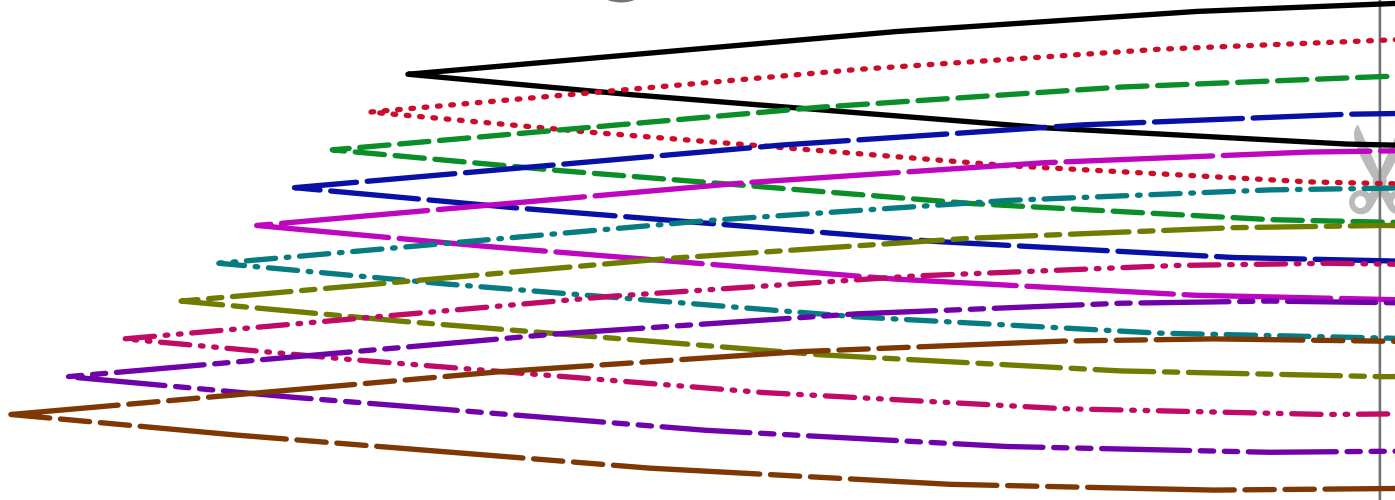


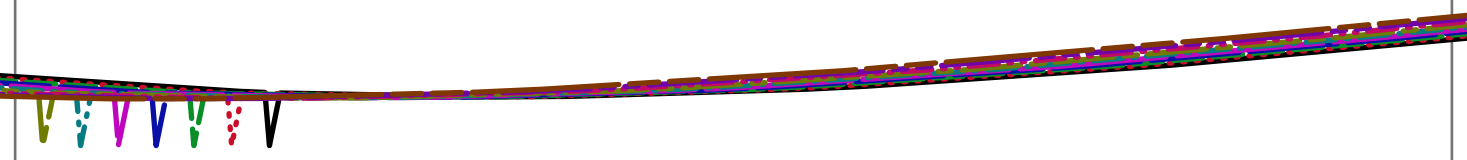
Page 1B



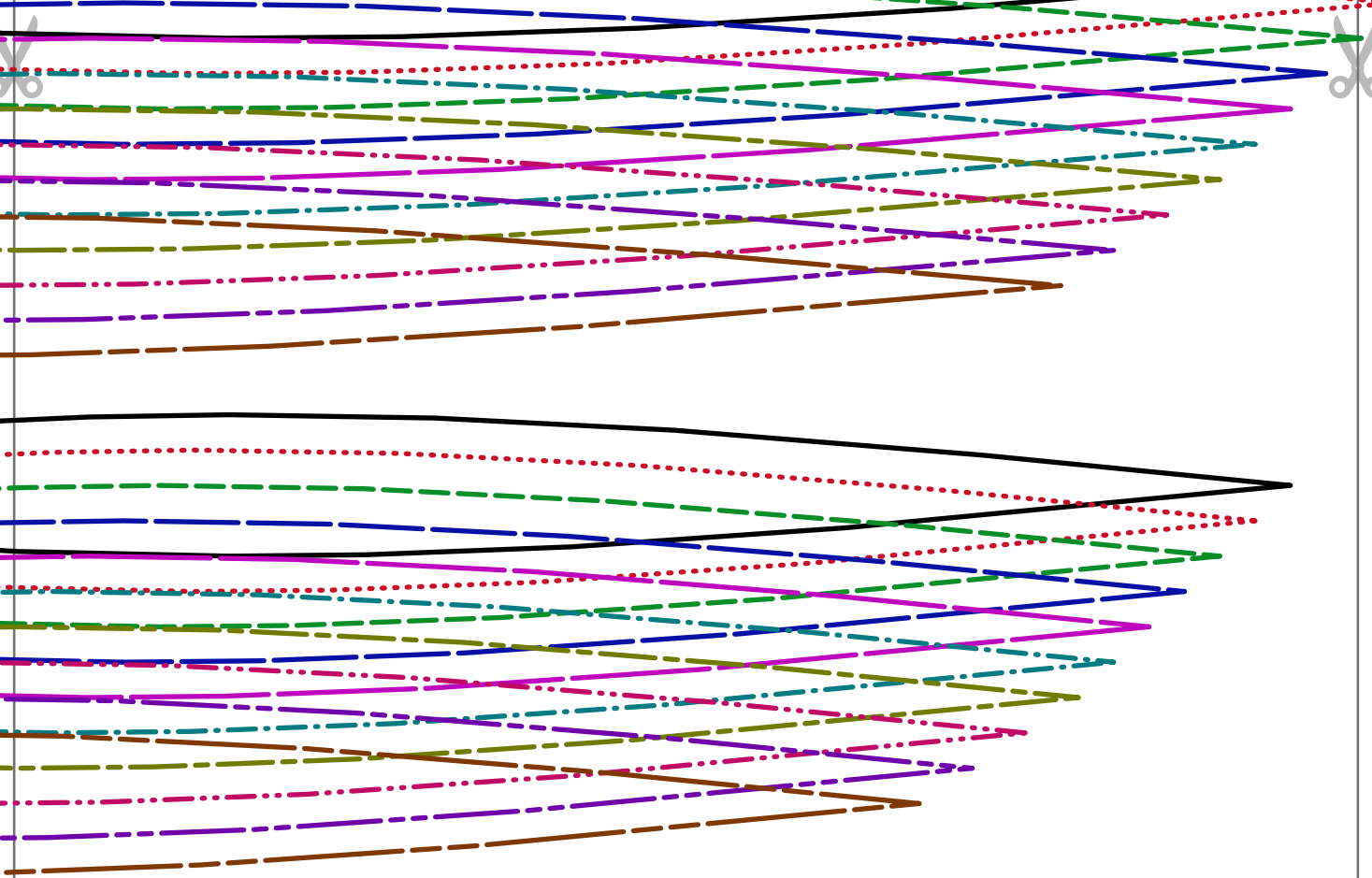


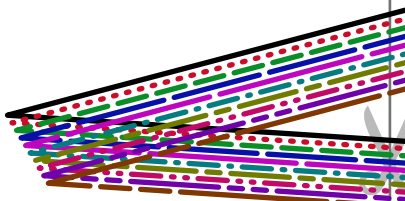
Page 1C





Page 1D

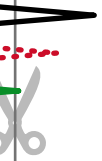




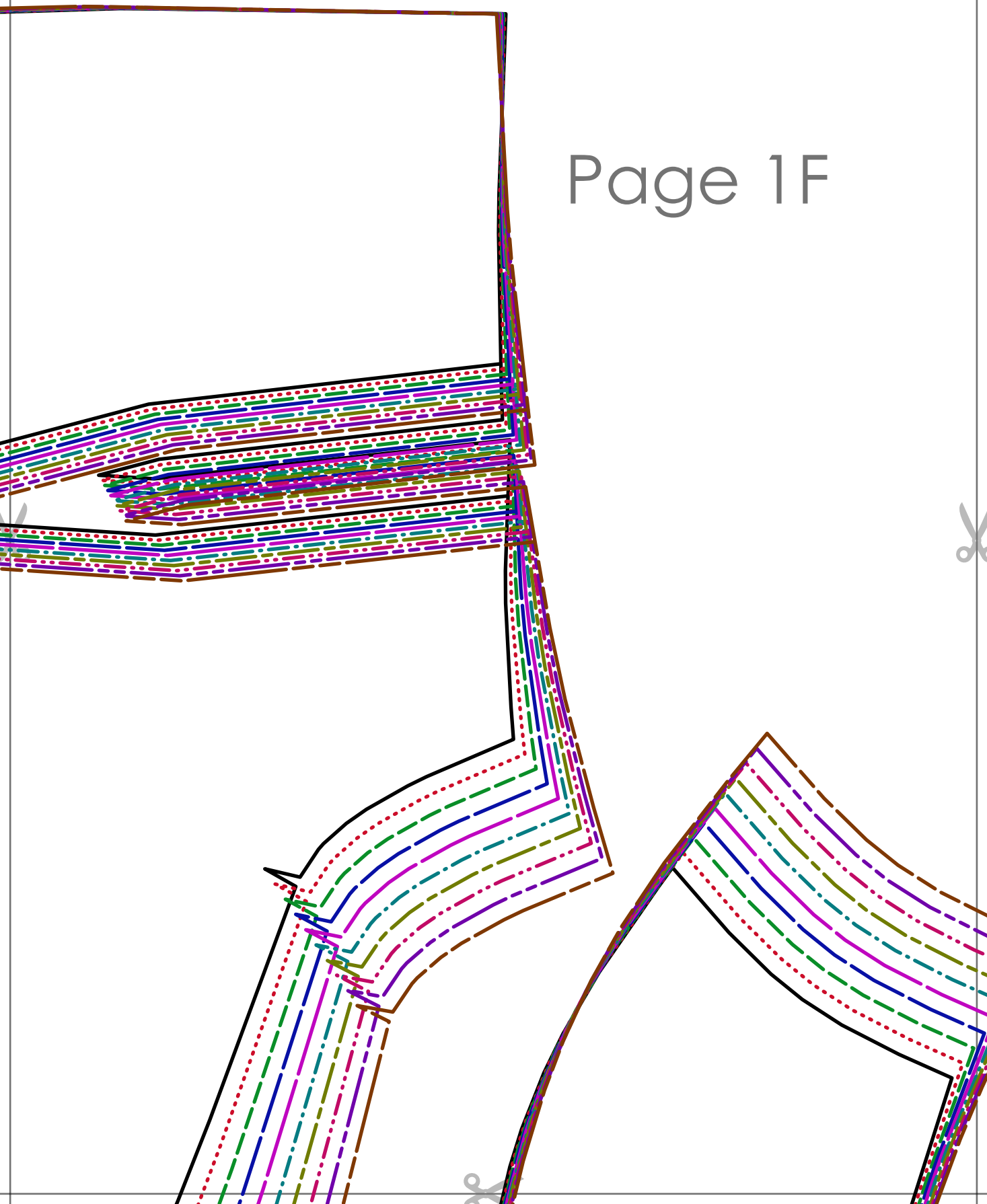
SIARRAH STRUCTURED MINI DRESS
1cm (3/8 in) seam allowance included

~~SIARRAH DRESS~~

BACK DRESS
cut 2 mirrored



Page 1F



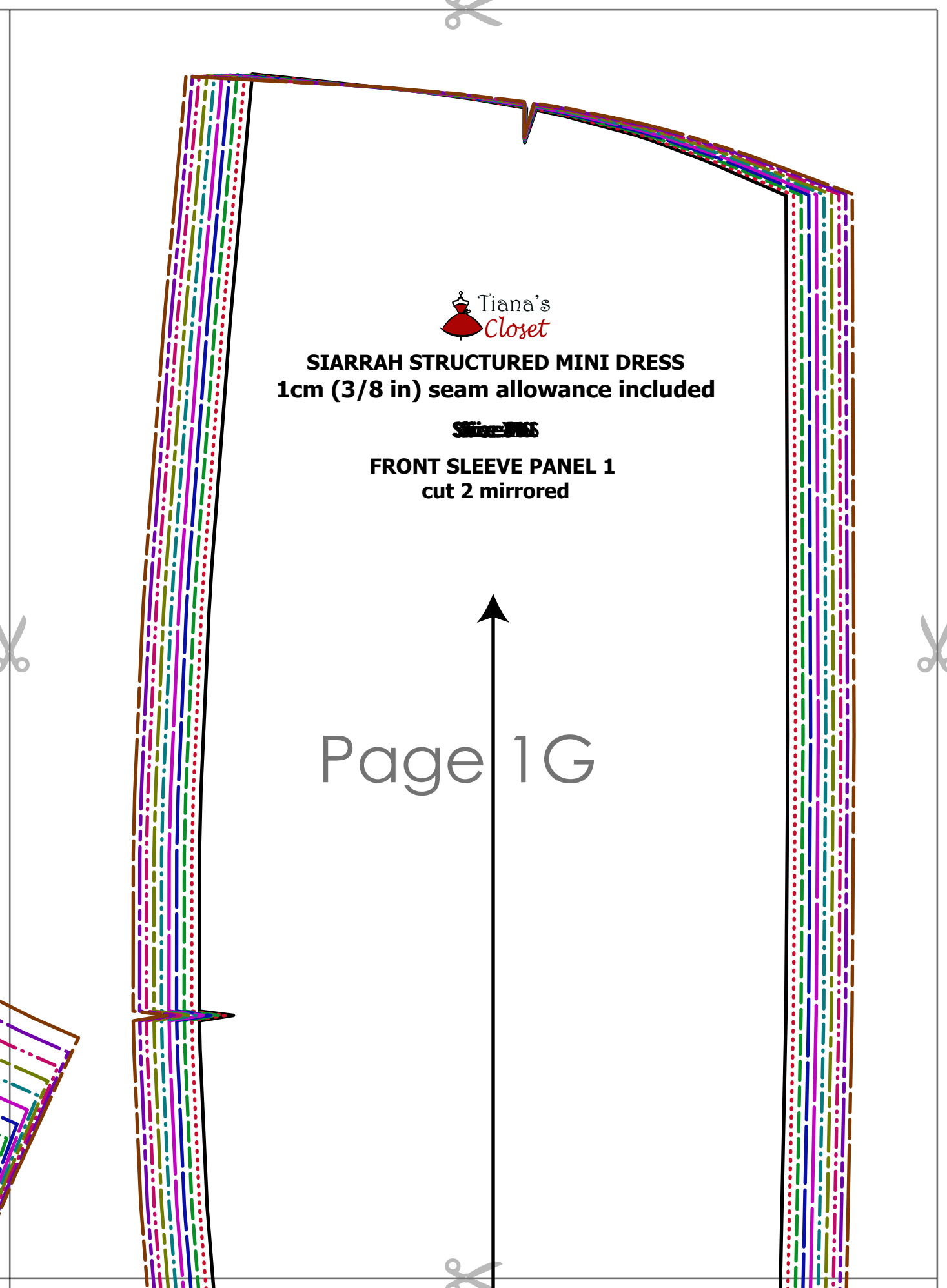


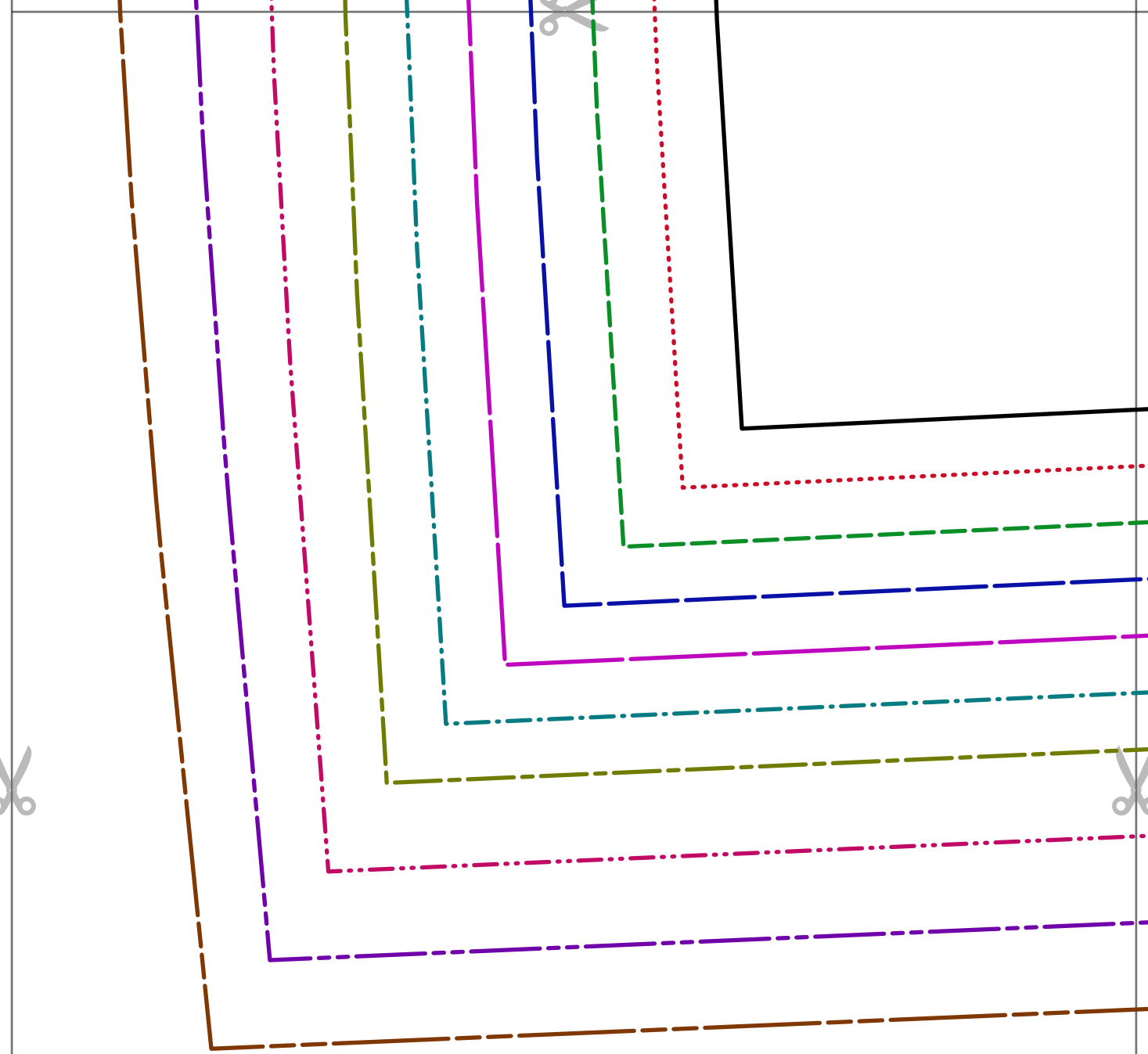
SIARRAH STRUCTURED MINI DRESS
1cm (3/8 in) seam allowance included

~~Size M~~

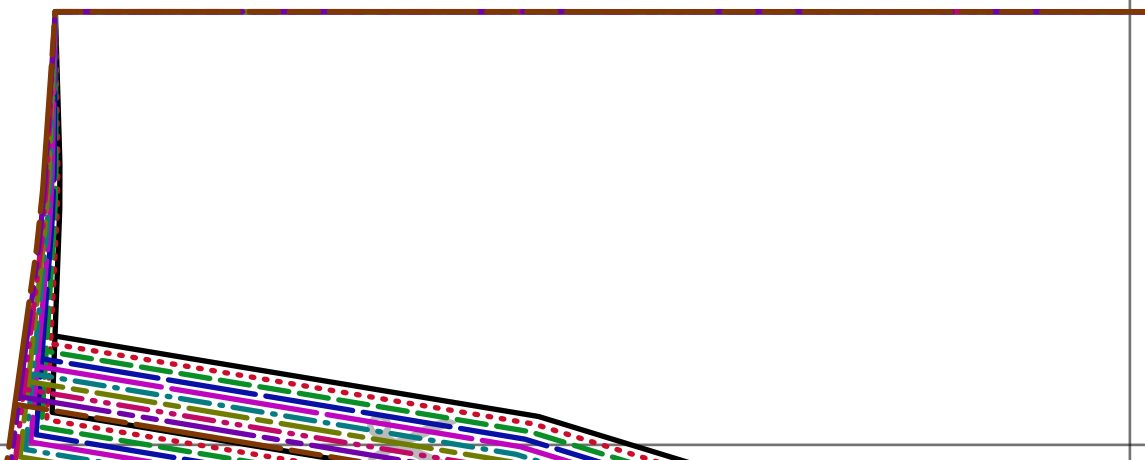
FRONT SLEEVE PANEL 1
cut 2 mirrored

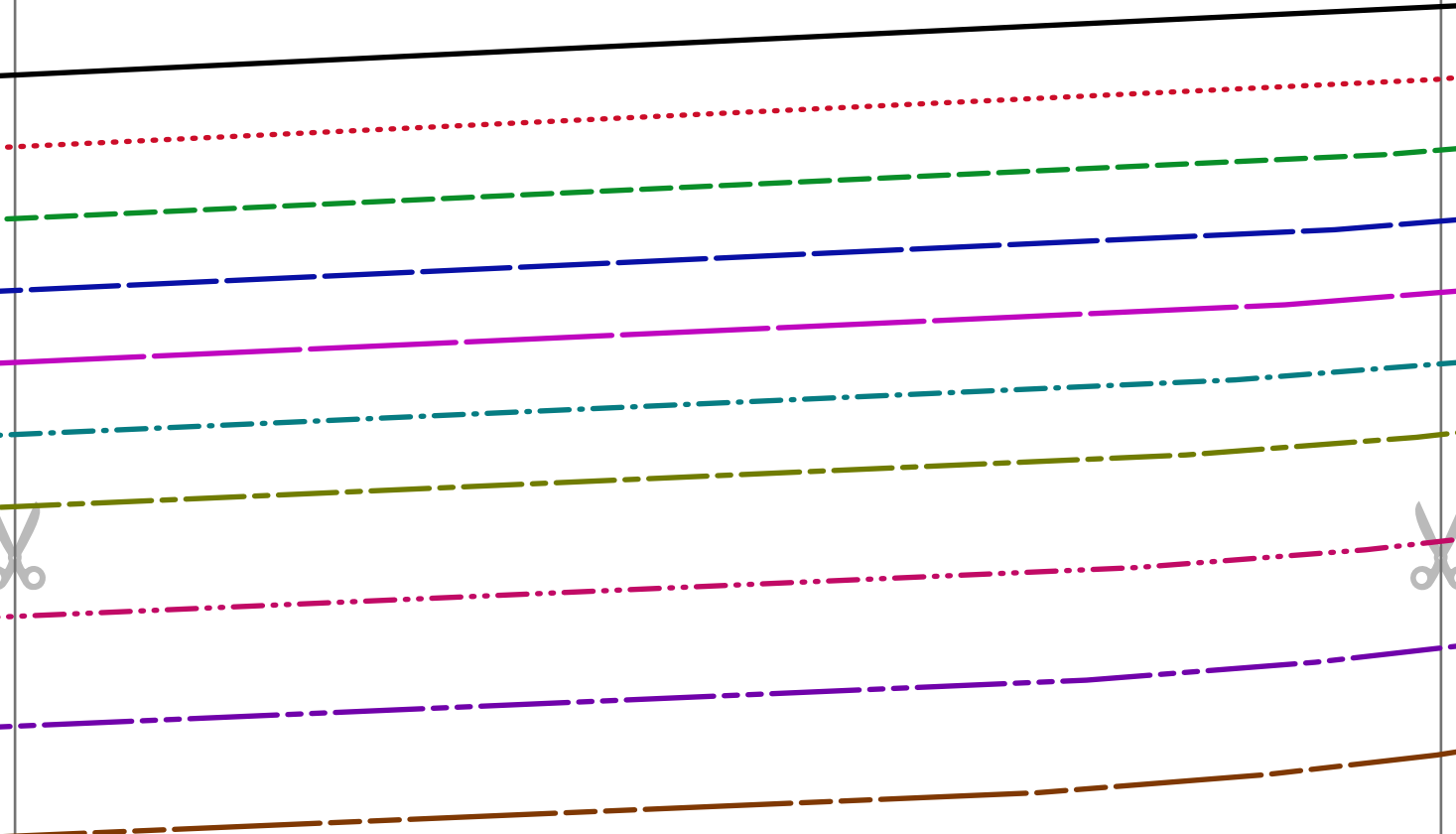
Page 1 G



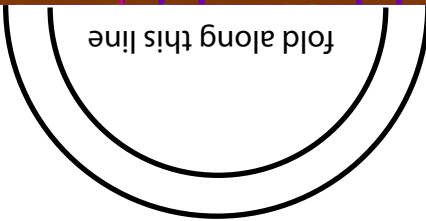


Page 2A



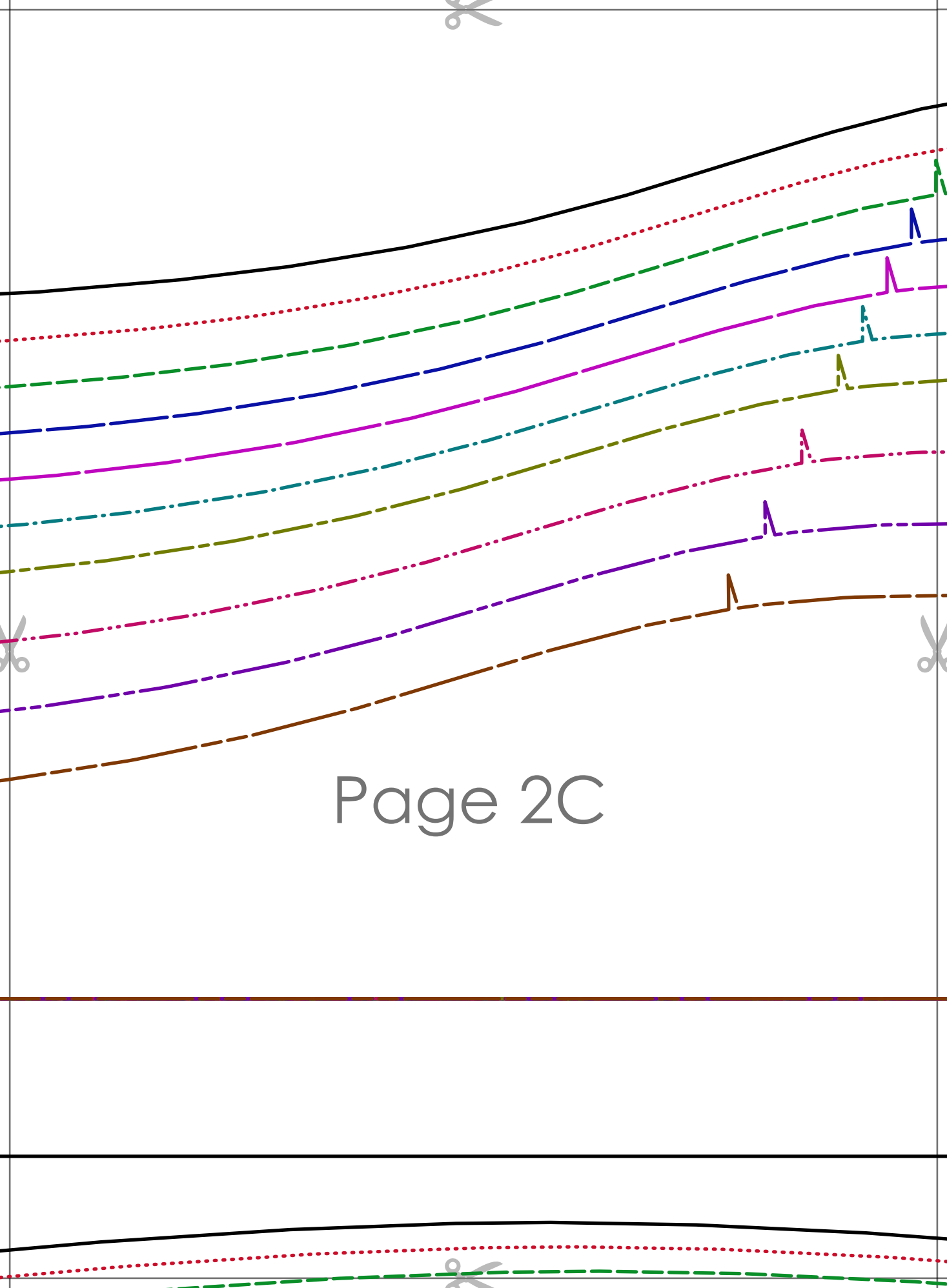


Page 2B

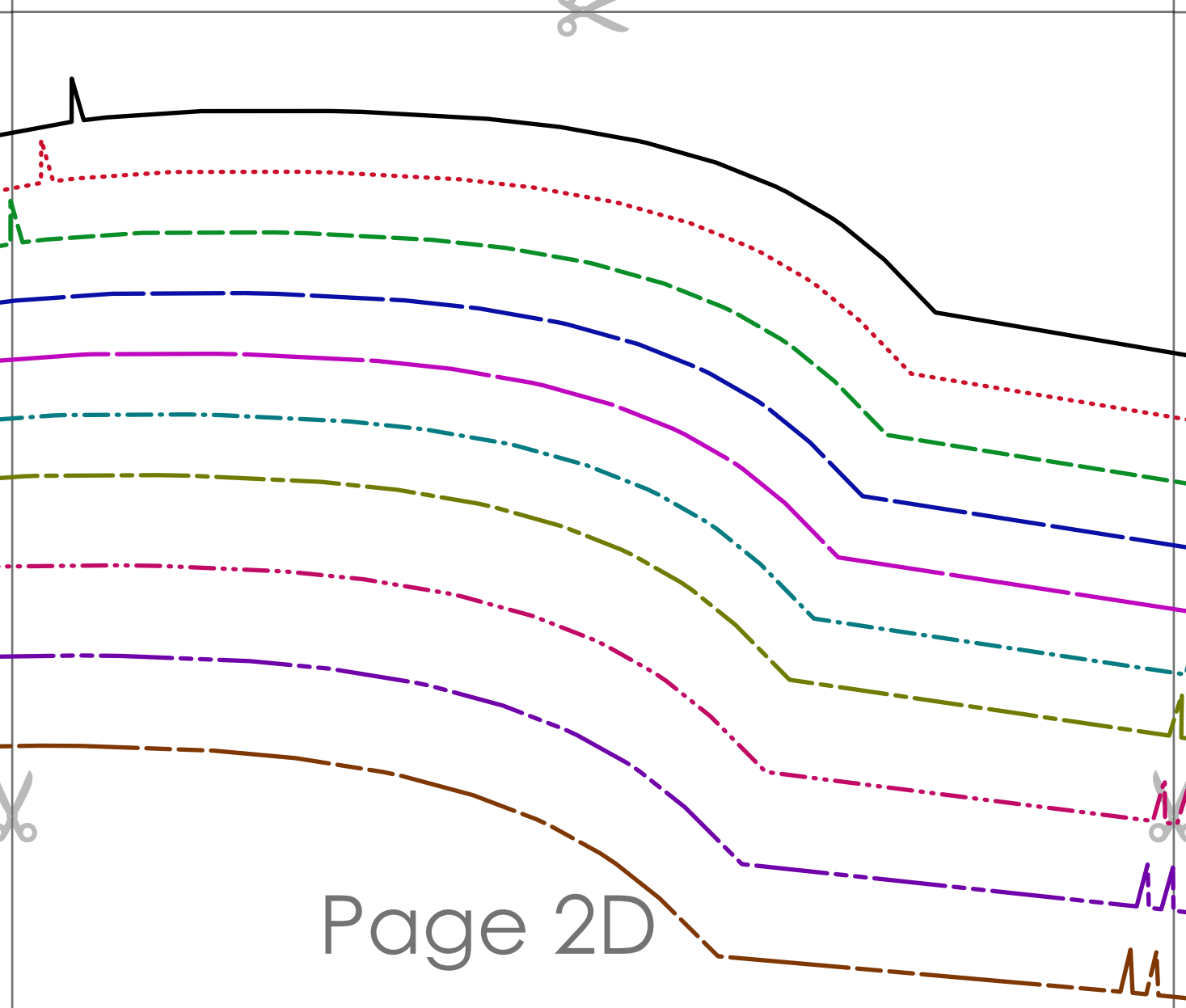


fold along this line



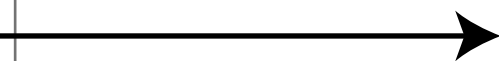
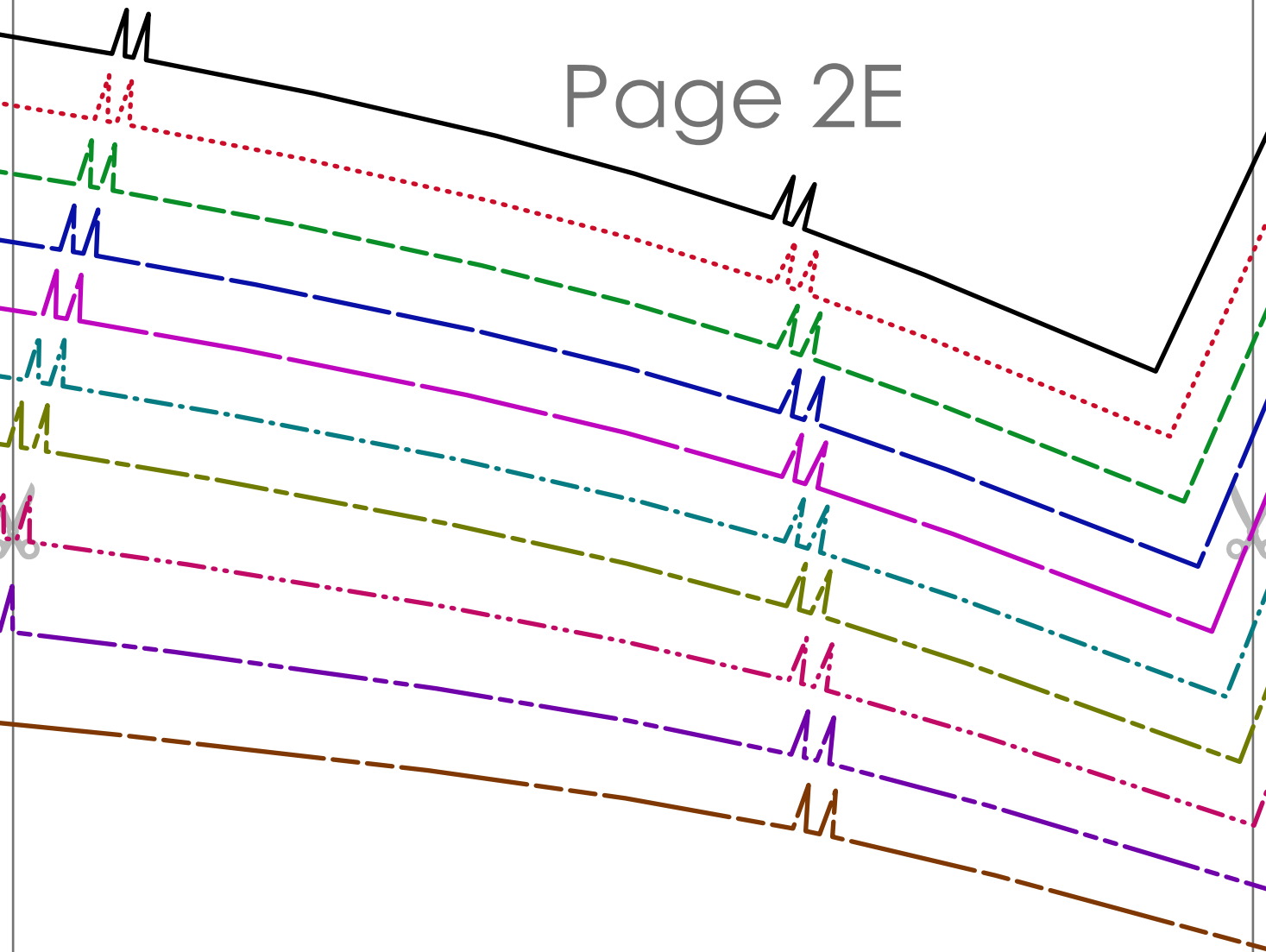


Page 2C



Page 2D

Page 2E

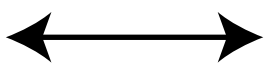




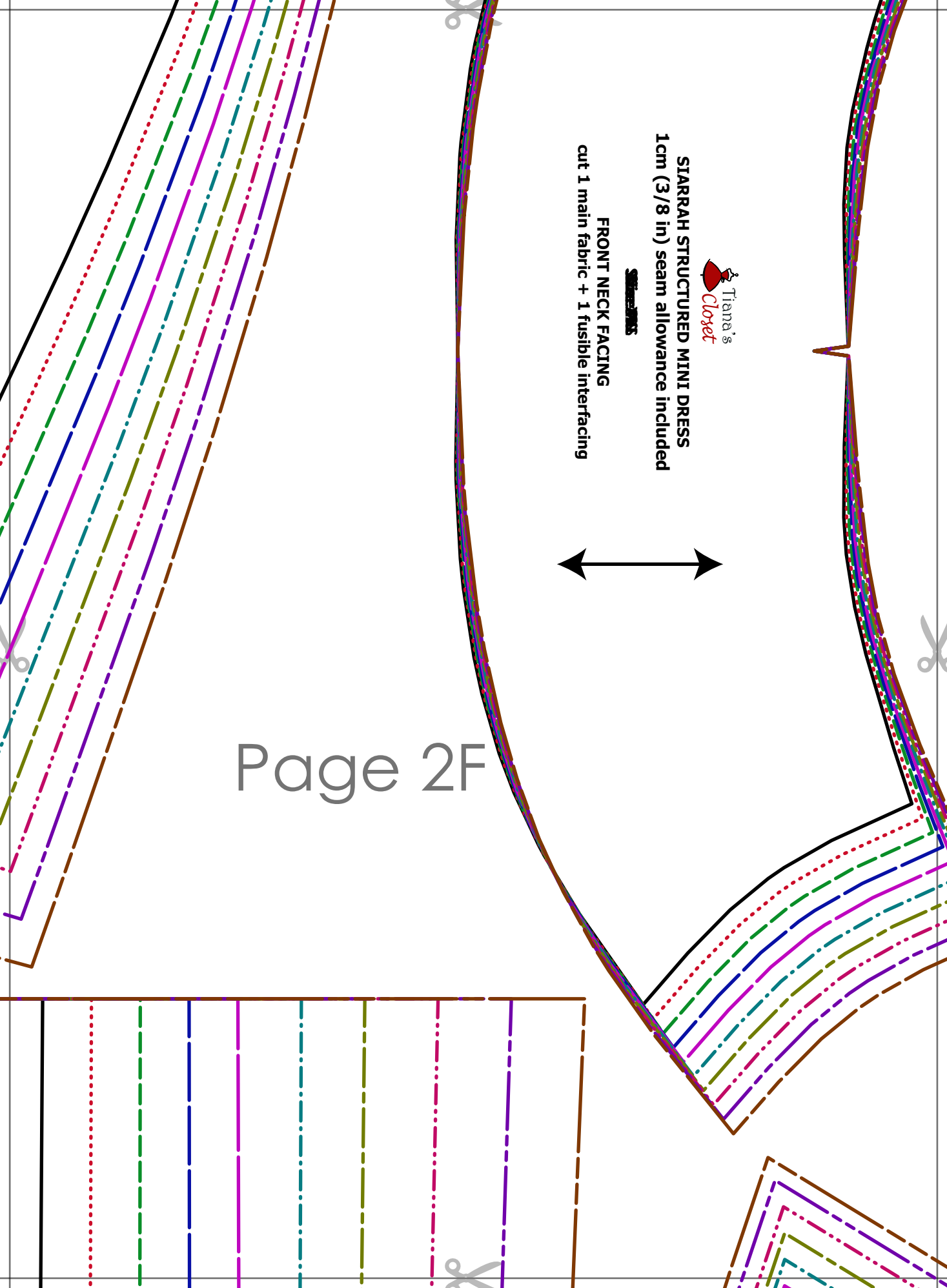
SIARRAH STRUCTURED MINI DRESS
1cm (3/8 in) seam allowance included

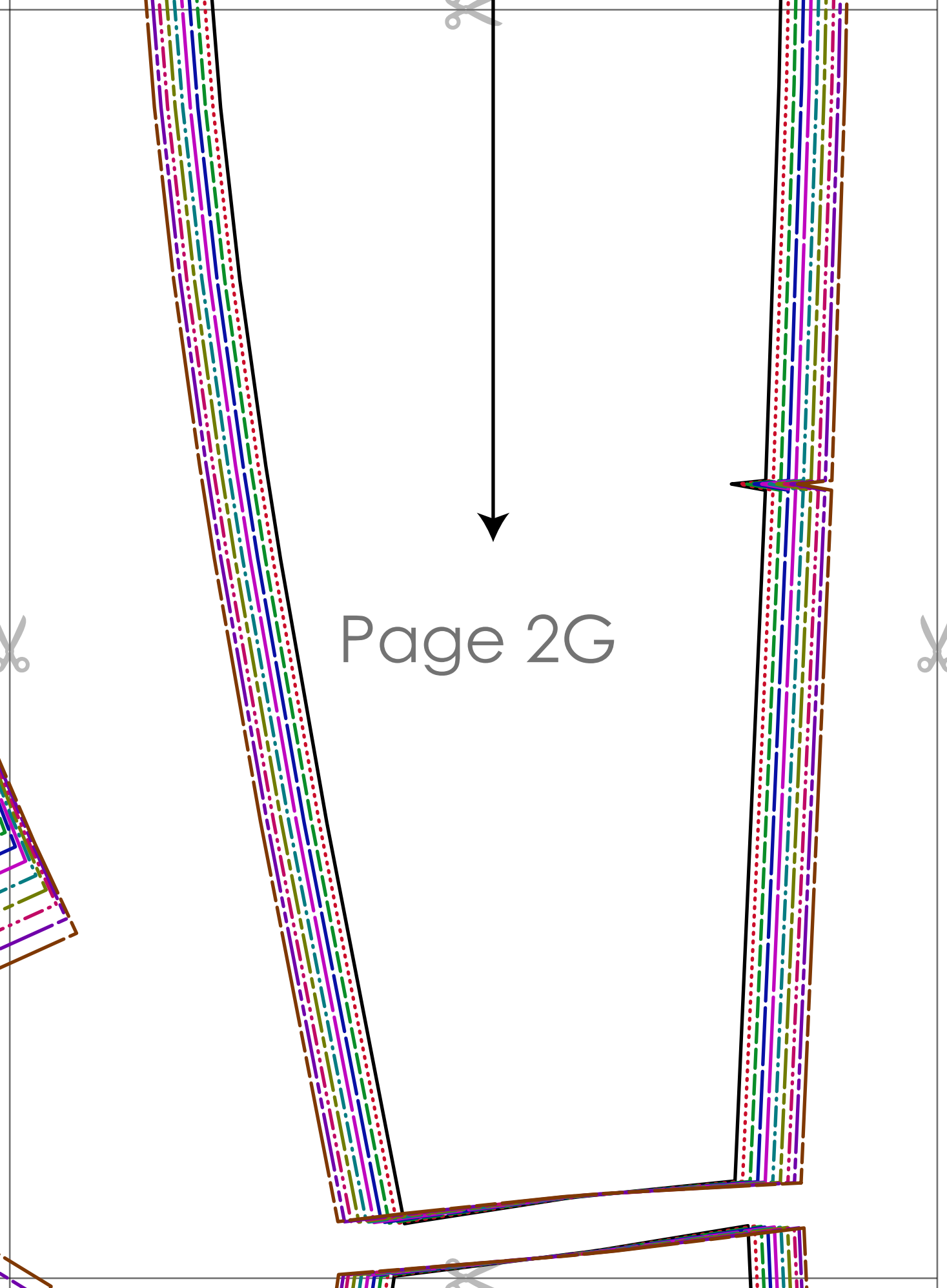
FRONT NECK FACING

cut 1 main fabric + 1 fusible interfacing



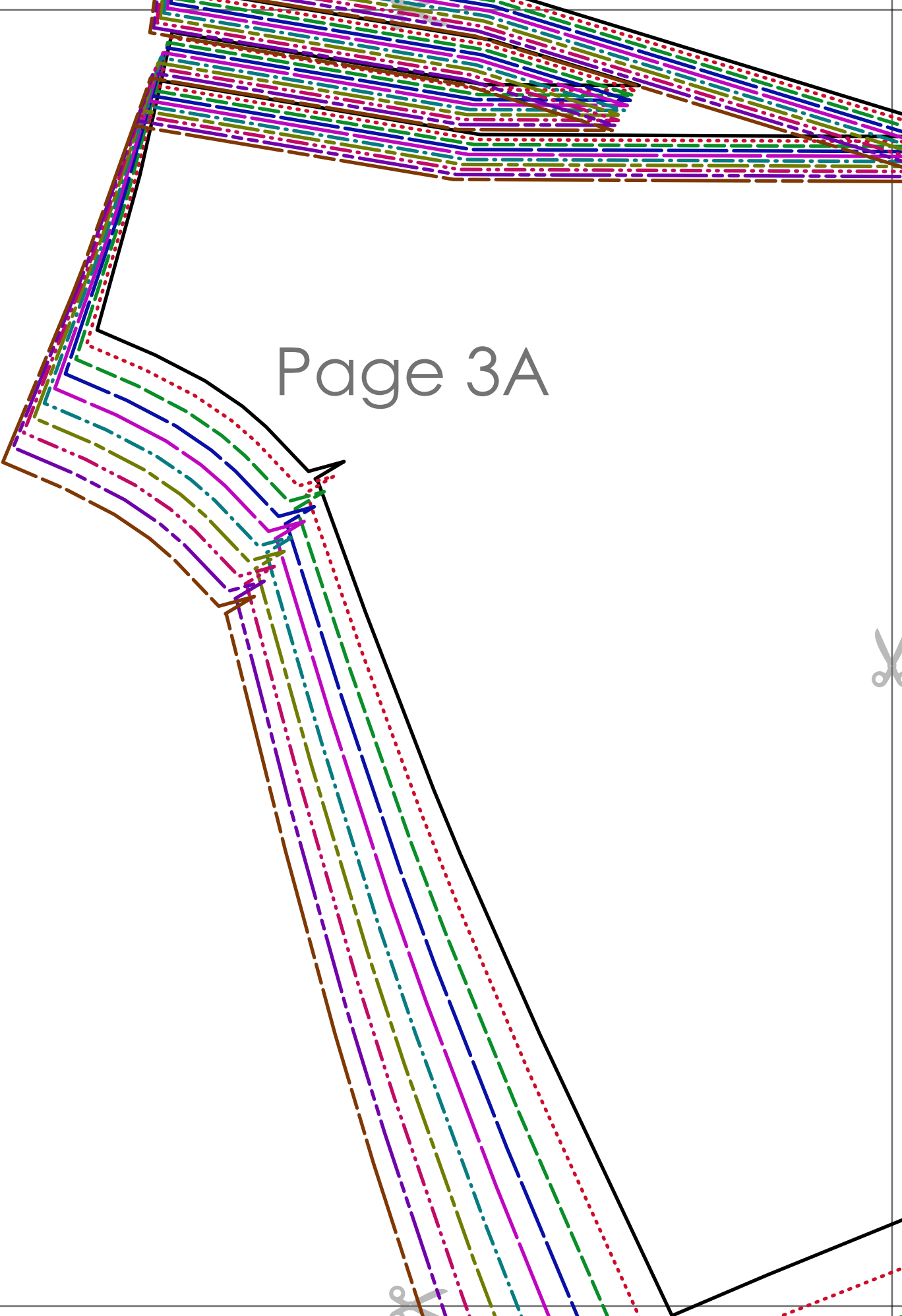
Page 2F





Page 2G

Page 3A



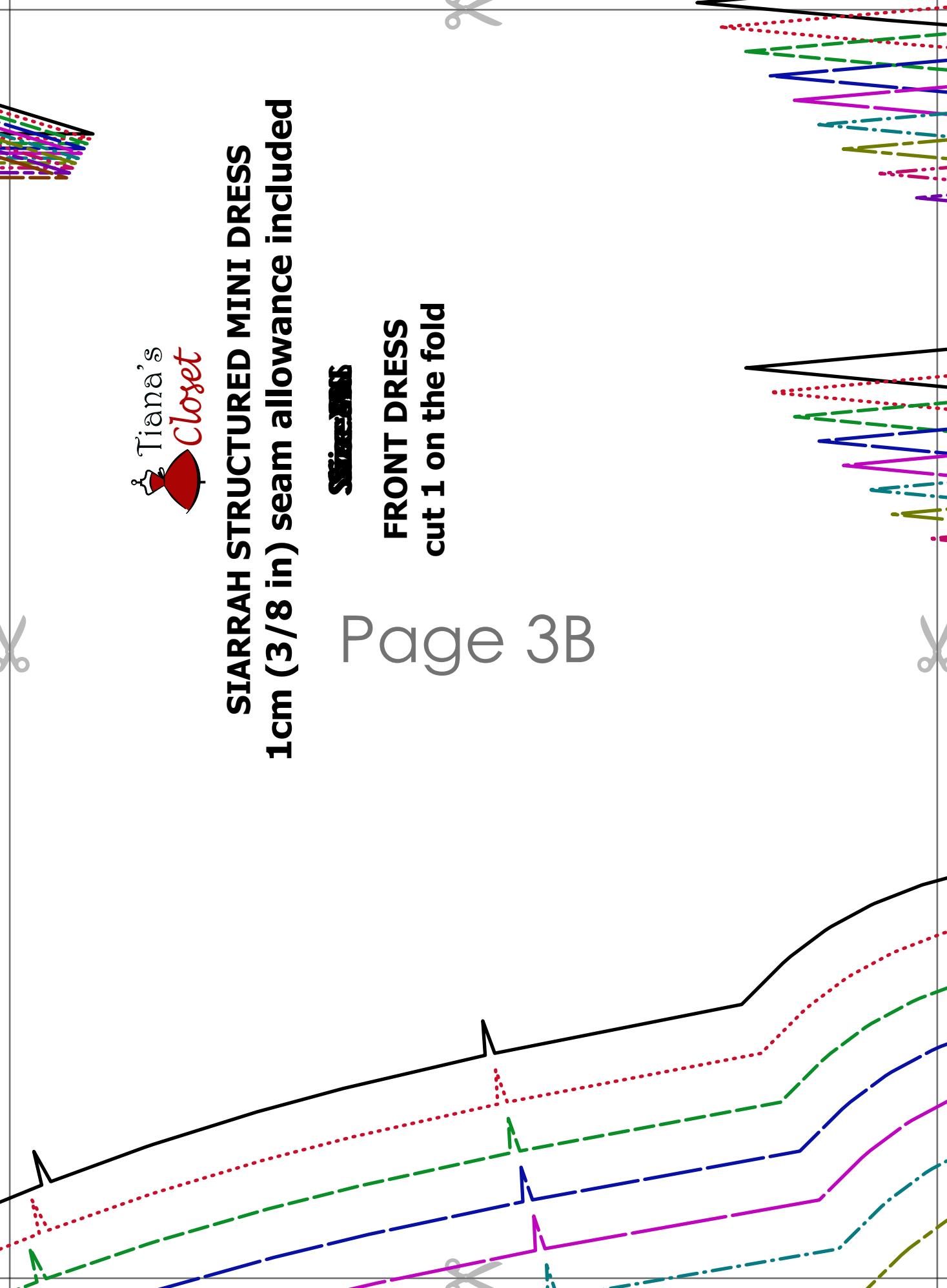


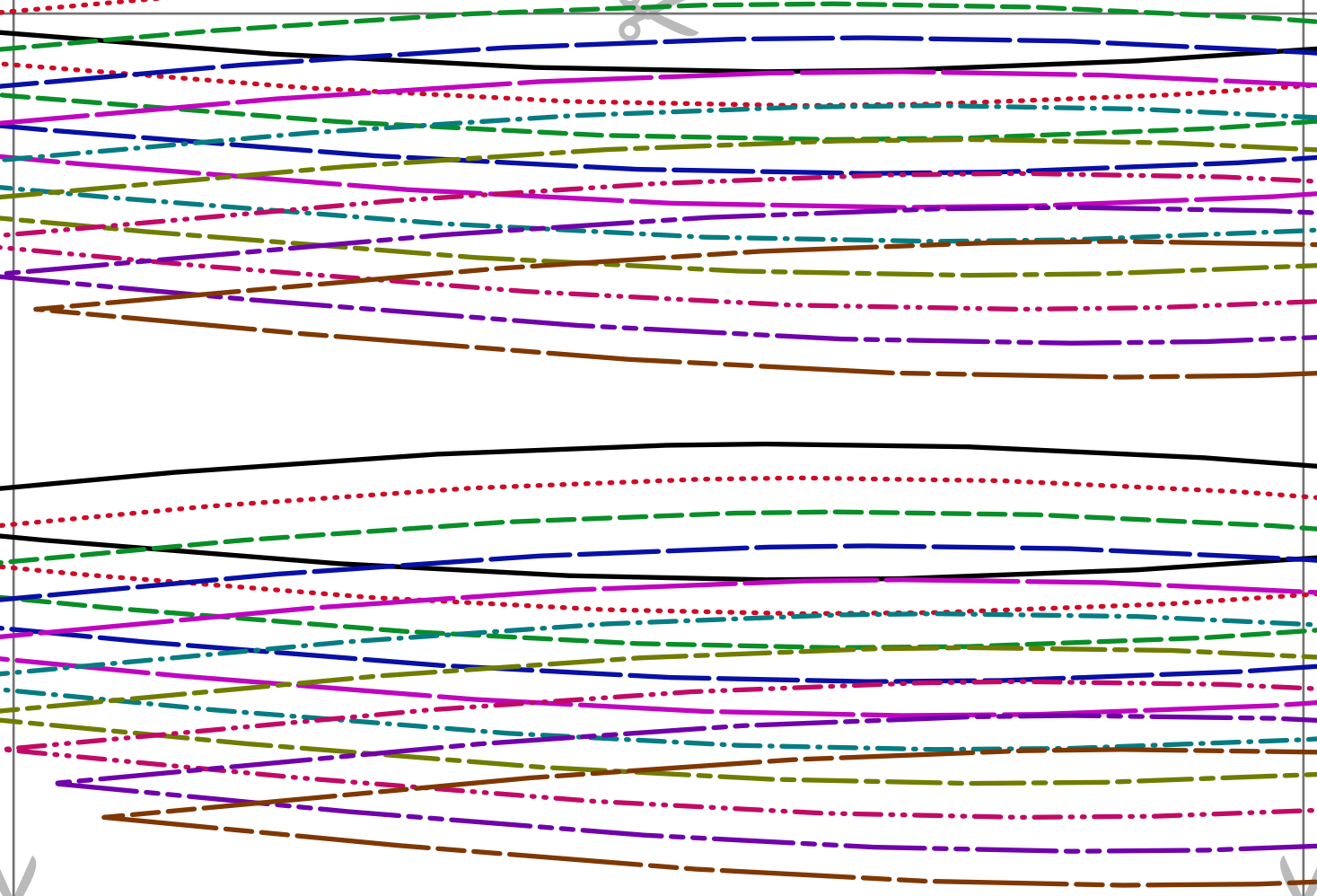
SIARRAH STRUCTURED MINI DRESS
1cm (3/8 in) seam allowance included

~~SIZE 20~~

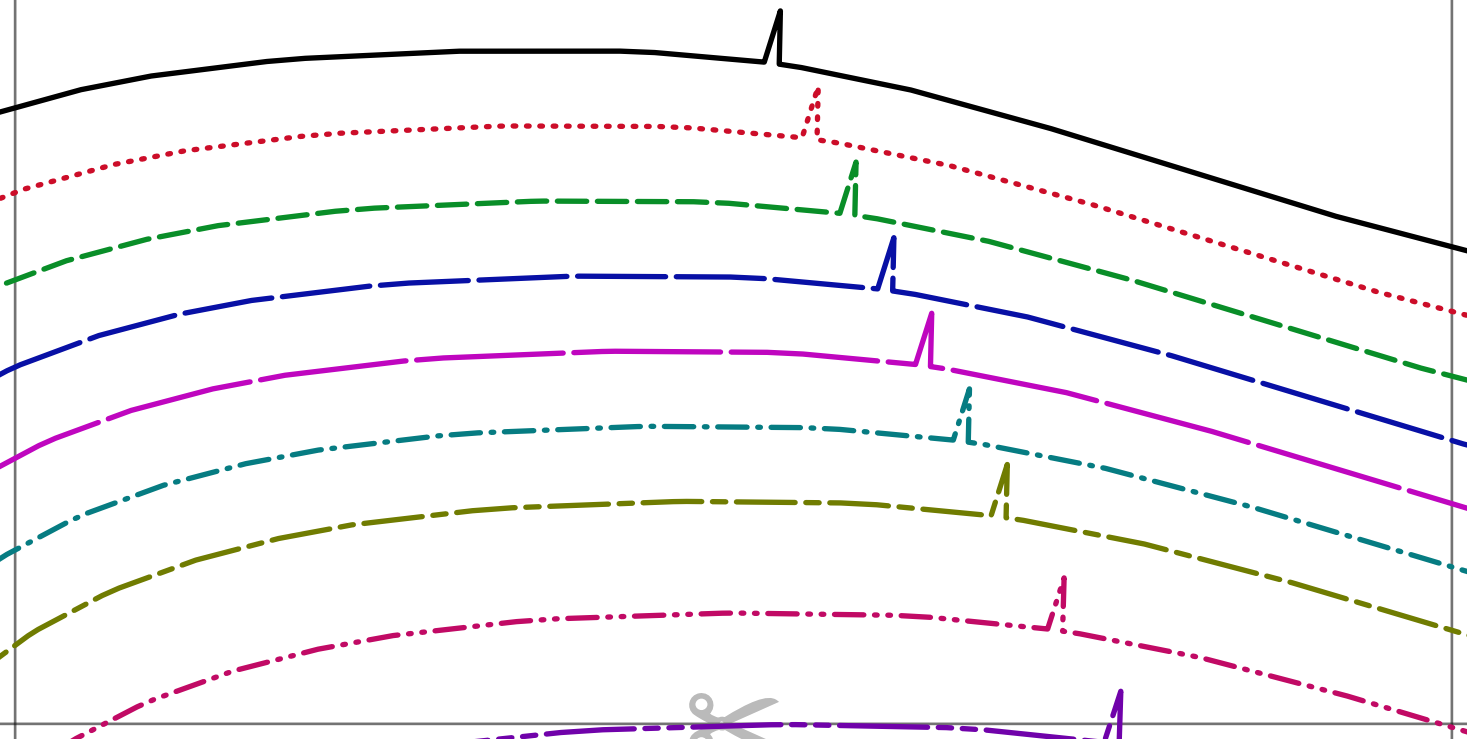
FRONT DRESS
cut 1 on the fold

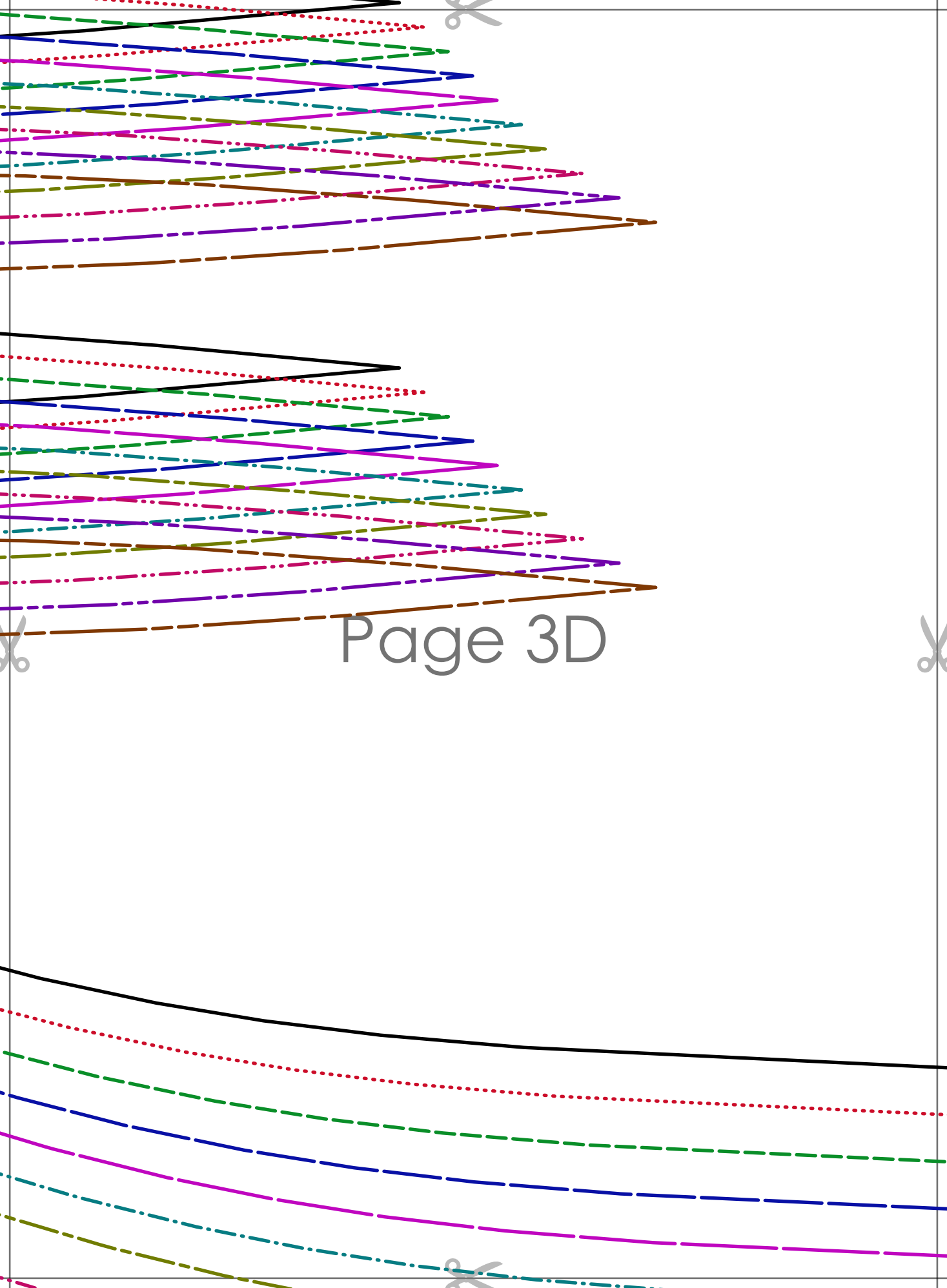
Page 3B





Page 3C

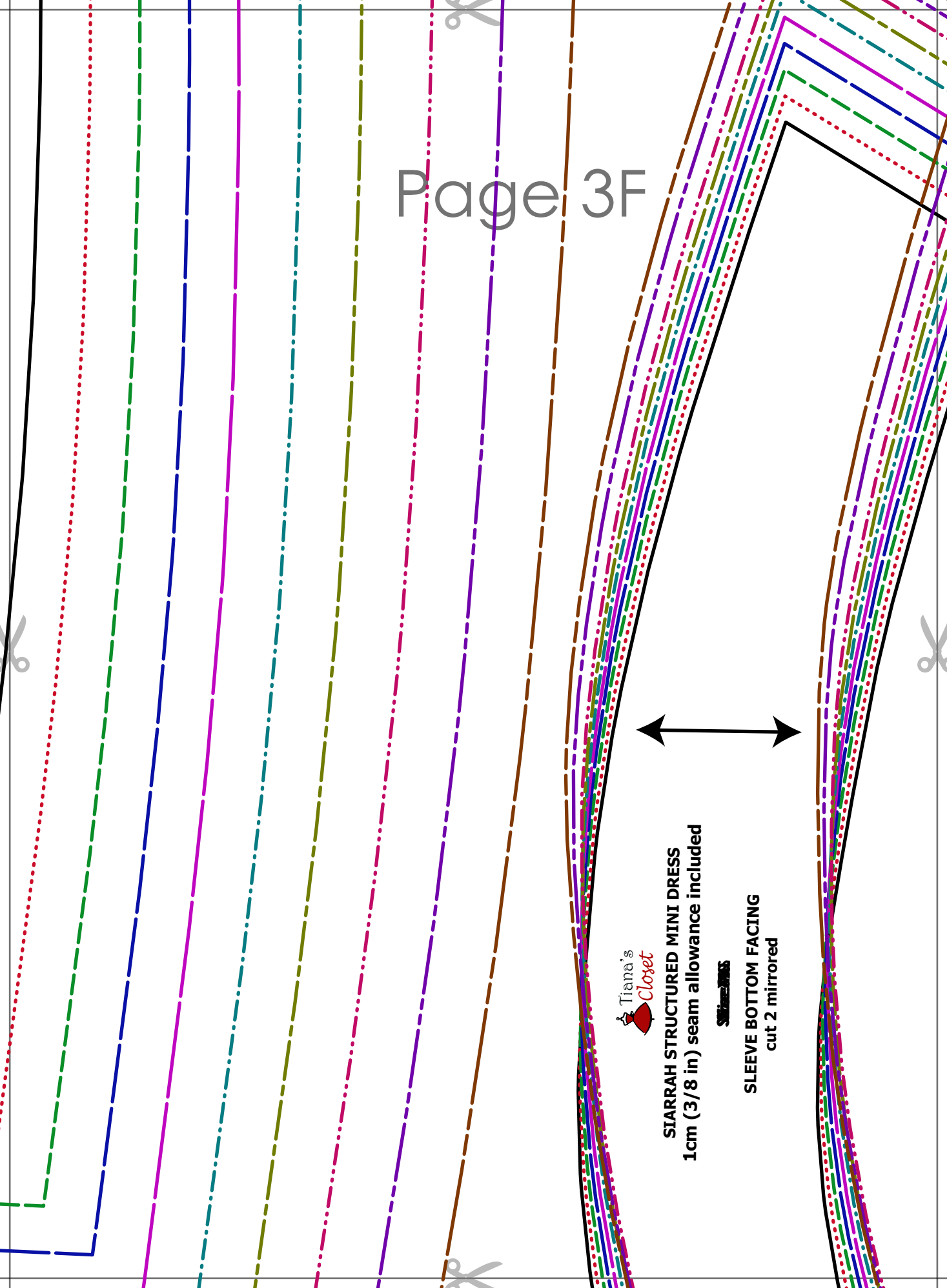




Page 3D

Page 3E

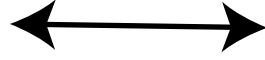




TIARRAH STRUCTURED MINI DRESS
1cm (3/8 in) seam allowance included



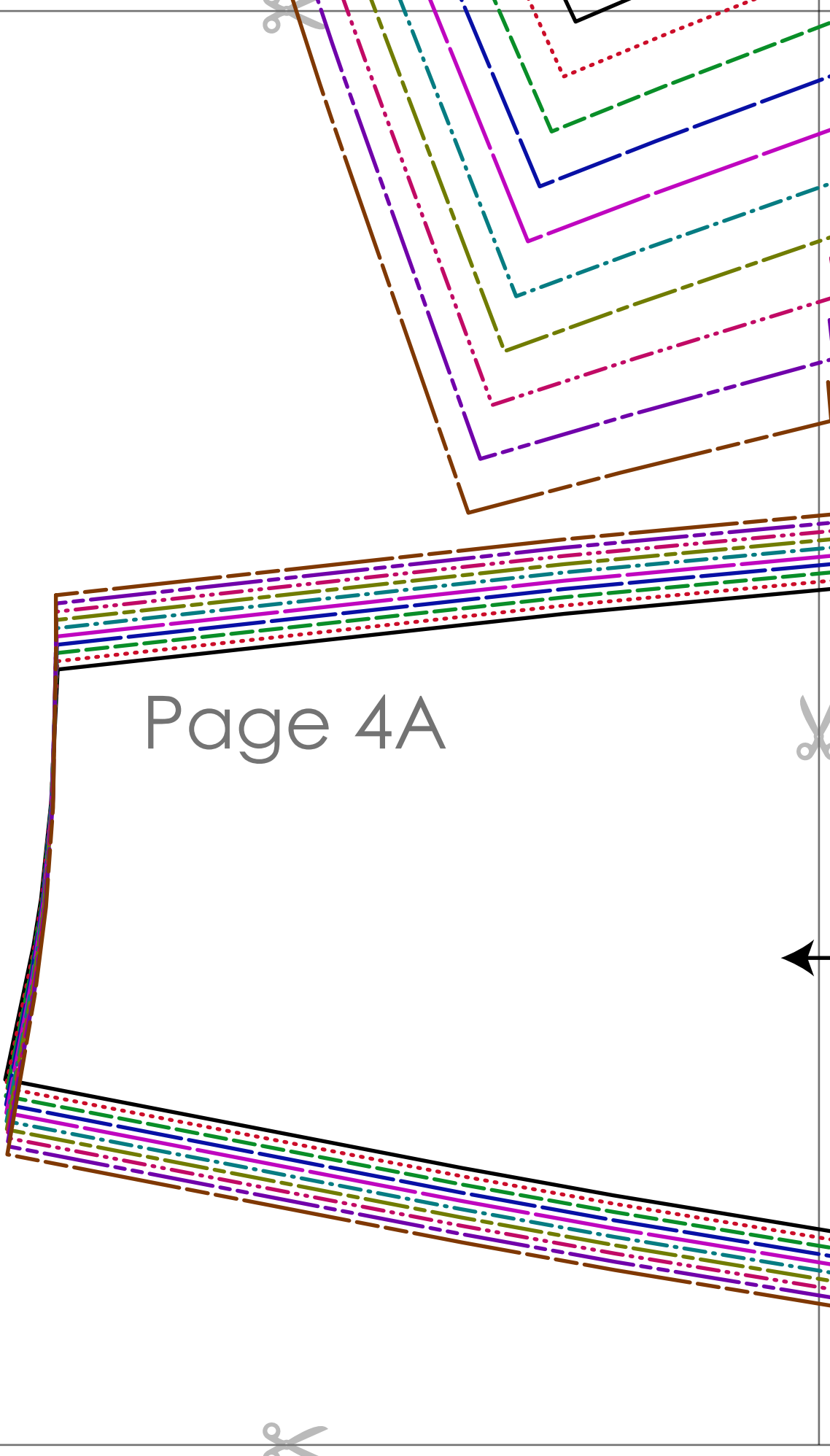
SLEEVE BOTTOM FACING
cut 2 mirrored

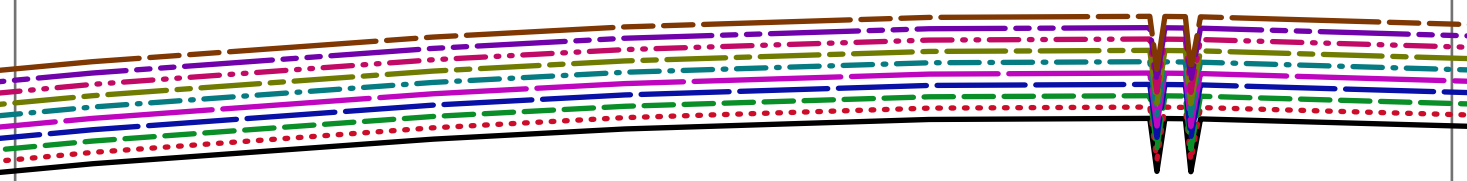
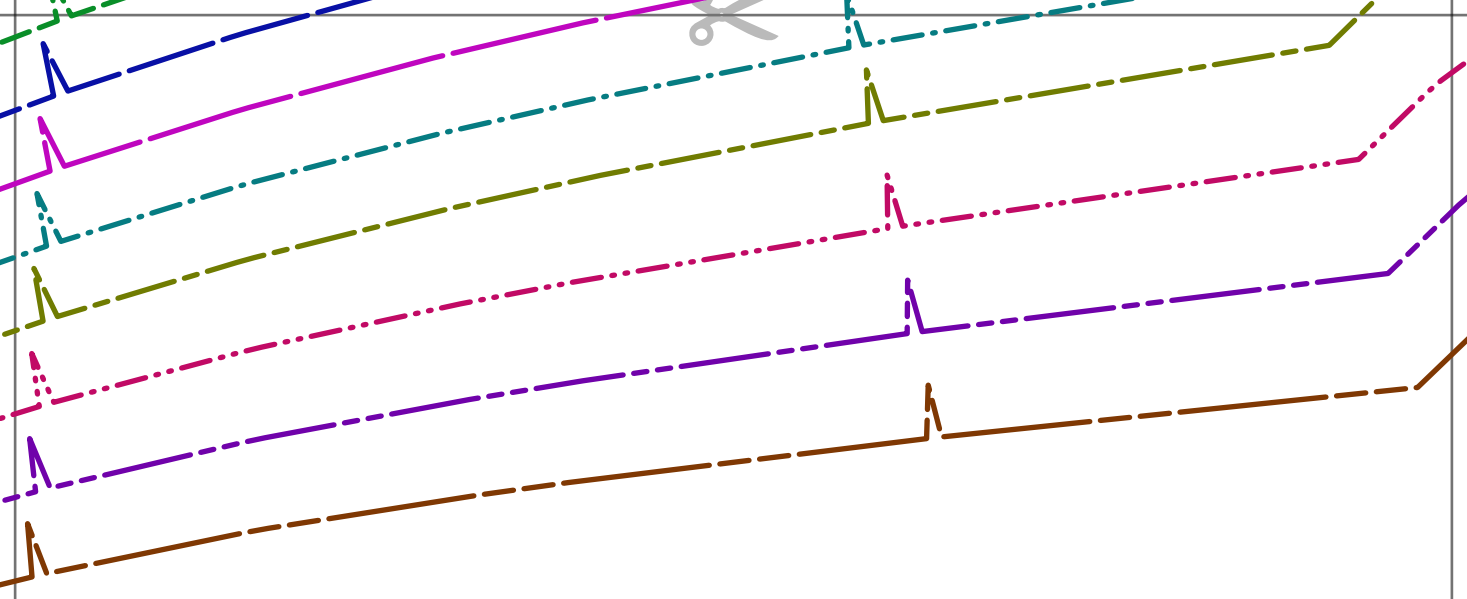




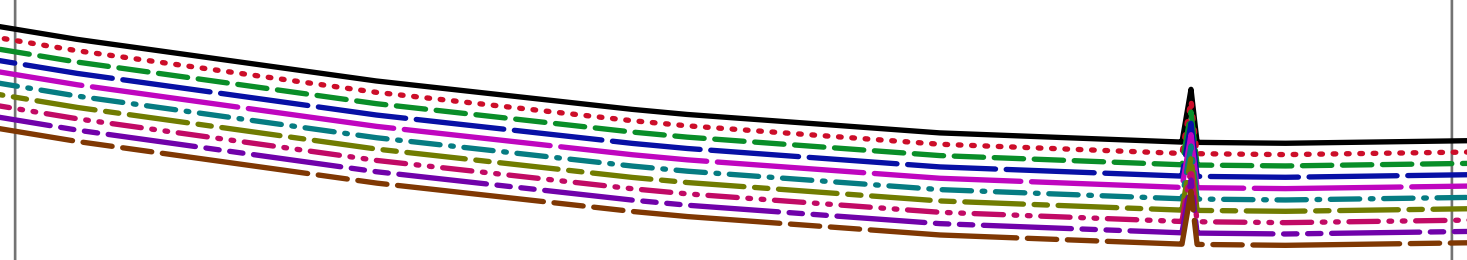
Page 3G

Page 4A





Page 4B



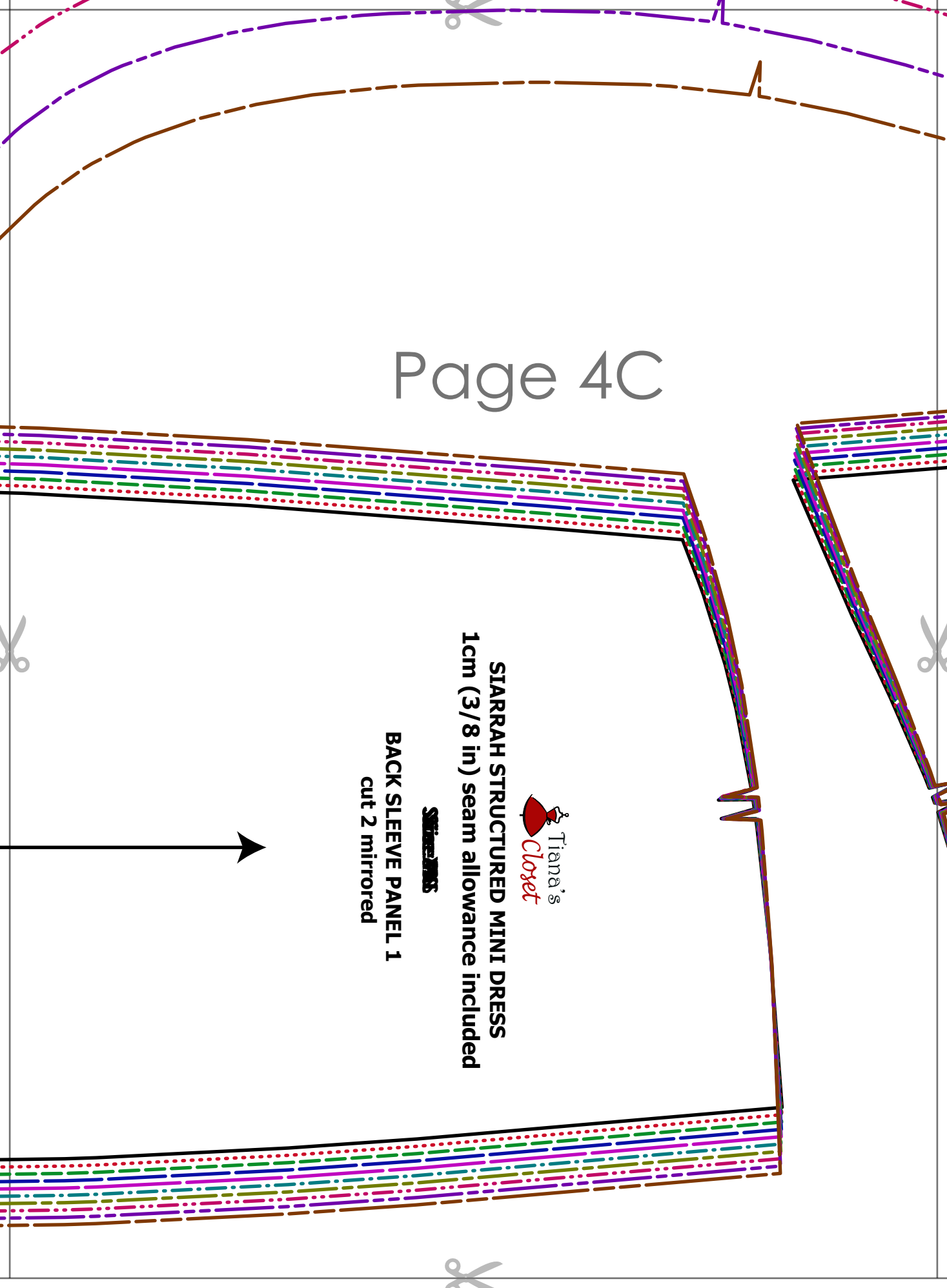
Page 4C



SIARRAH STRUCTURED MINI DRESS
1cm (3/8 in) seam allowance included

Size: XS

BACK SLEEVE PANEL 1
cut 2 mirrored



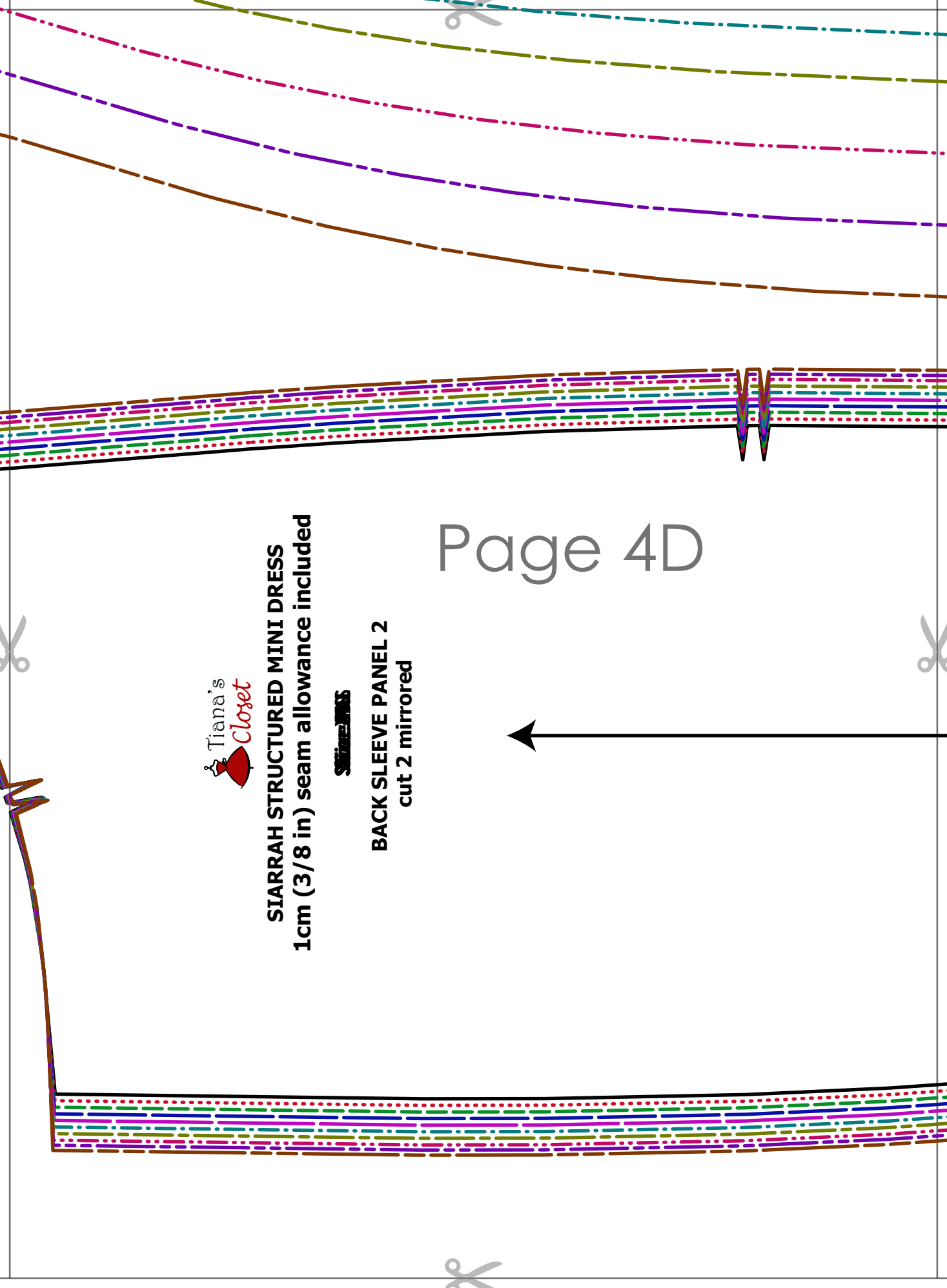


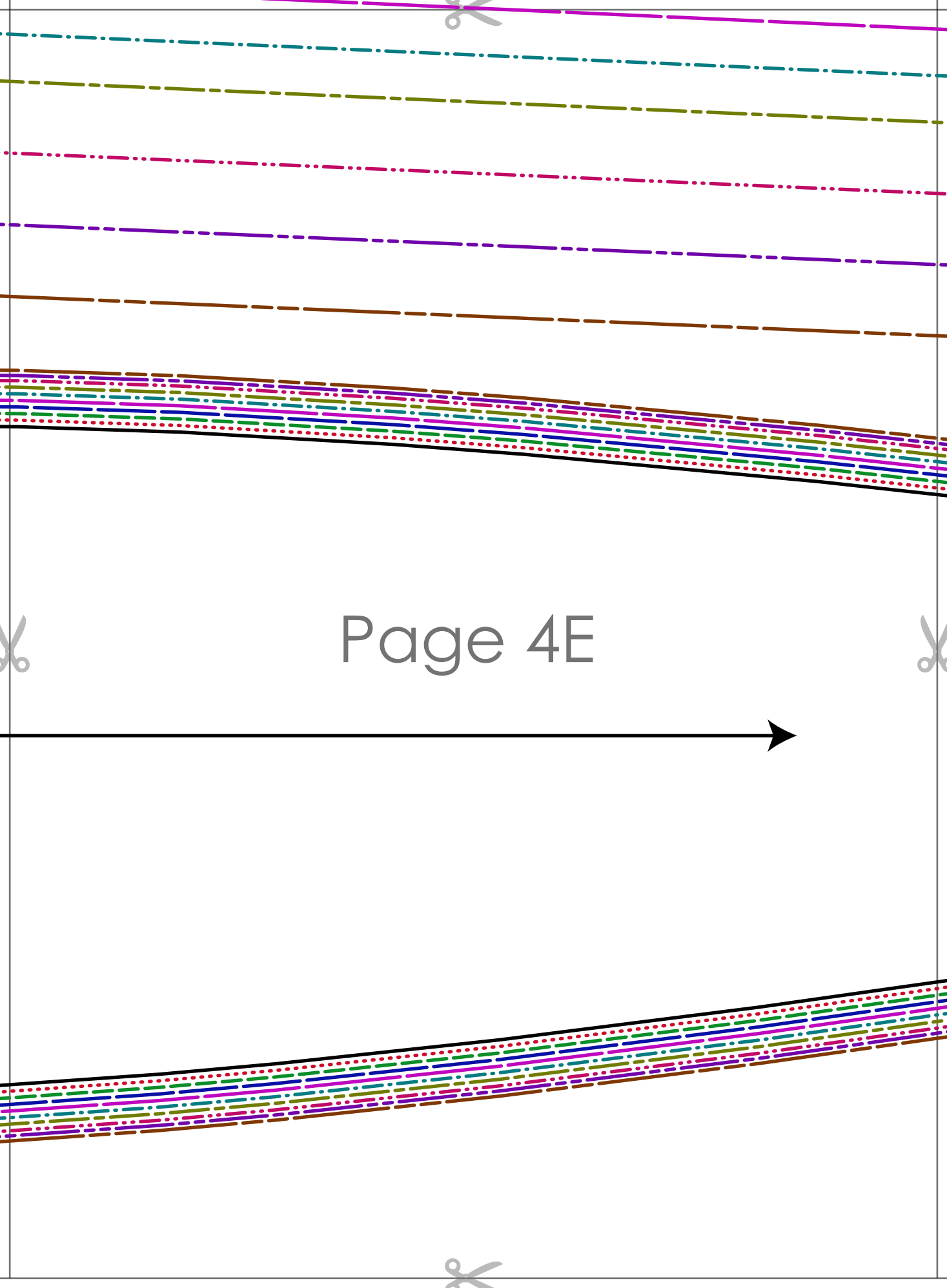
SIARRAH STRUCTURED MINI DRESS
1cm (3/8 in) seam allowance included

SIARRAH DRESS

BACK SLEEVE PANEL 2
cut 2 mirrored

Page 4D





Page 4E

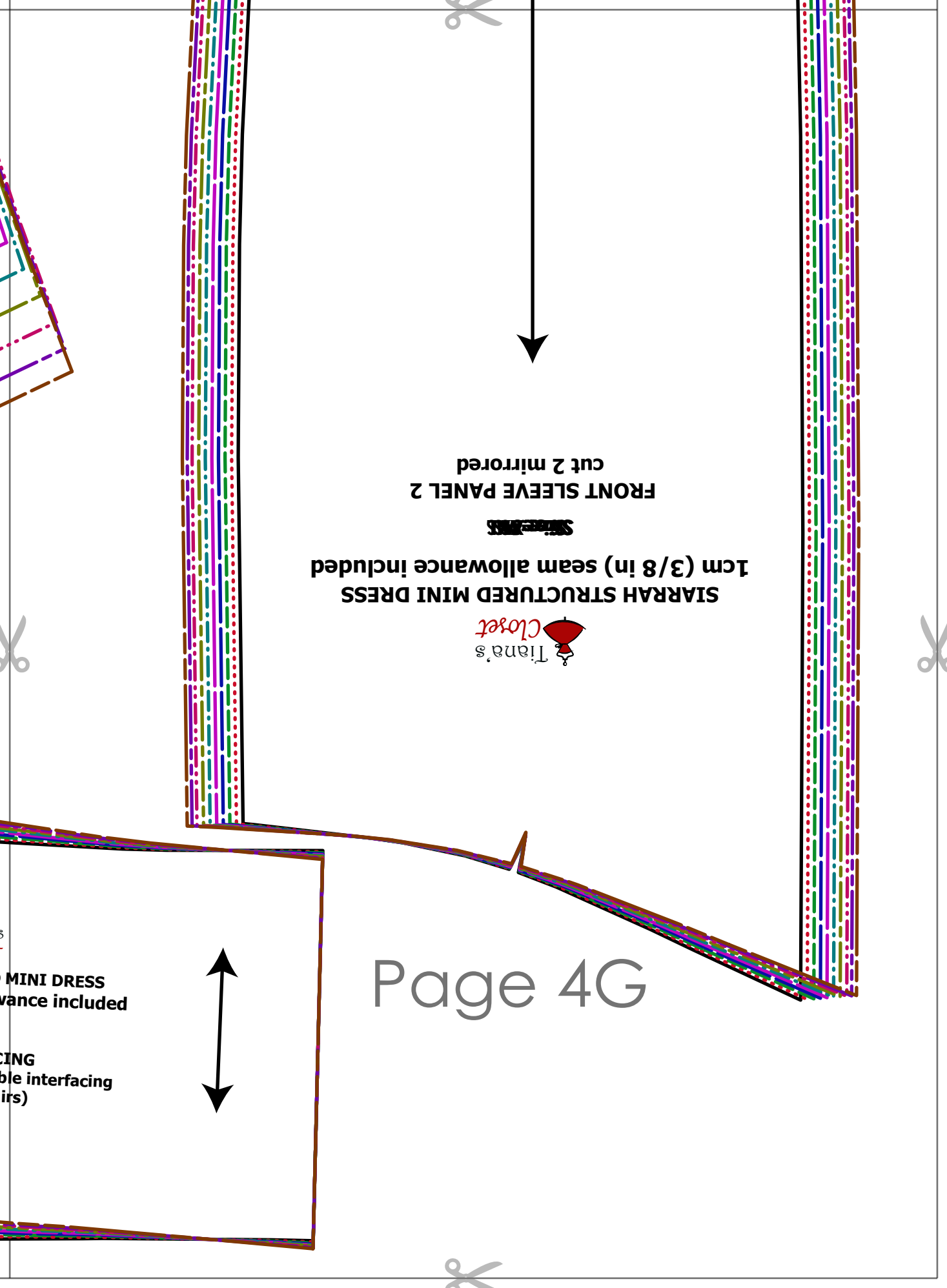
Page 4F



SIARRAH STRUCTURED M
1cm (3/8 in) seam allowance

~~Size: M~~

BACK NECK FACIN
cut 2 main fabric + 2 fusible
(in mirrored pairs)



FRONT SLEEVE PANEL 2
cut 2 mirrored

STARAH STRUCTURED MINI DRESS
1cm (3/8 in) seam allowance included



MINI DRESS
ance included

ING
ble interfacing
(irs)

