

PRINTING INSTRUCTIONS

- Tiana's Closet sewing patterns are made in Layered PDF format, which means all sizes are saved in one file and can be shown or hidden. It is recommended to use Adobe Acrobat Reader (paid version on Mac OS, free on Windows) or Foxit PDF Reader (free, works on Windows only) to read the file correctly. In order to choose the desired size(s), go to Layers tab of your PDF reader, uncheck all boxes except for the desired size(s) and the box Print for all sizes.

- When printing the pattern, go to Print settings, in the tab Scale choose Custom scale: 100% (or Scaling: None or Actual Size) to print true to size. Note: some computers print smaller than true size even when you choose 100% scale, so you will have to adjust the scale to a little larger than 100% and measure the test square until you get the true size using the test rulers

- Always print the first page of the file and measure to avoid waste of paper.

- After printing the pattern, cut the pages along the lines with scissors icon, align and tape the pages according to their sequences. For example, pages 1A, 1B, 1C, 1D... are lined up in one row from left to right, pages 1A, 2A, 3A, 3B... are lined up in one column from up to down.

- You can find photo instruction for printing sewing patterns on Tiana's Closet website:

<https://tianascloset.com/index.php/how-to-print-tianascloset-patterns/>

SIZE TABLE

WOMEN'S CLOTHING SIZE

- Sizing is based on body measurements.

- If between sizes, size up for woven fabric, size down for knit fabric.

Unit: centimeter

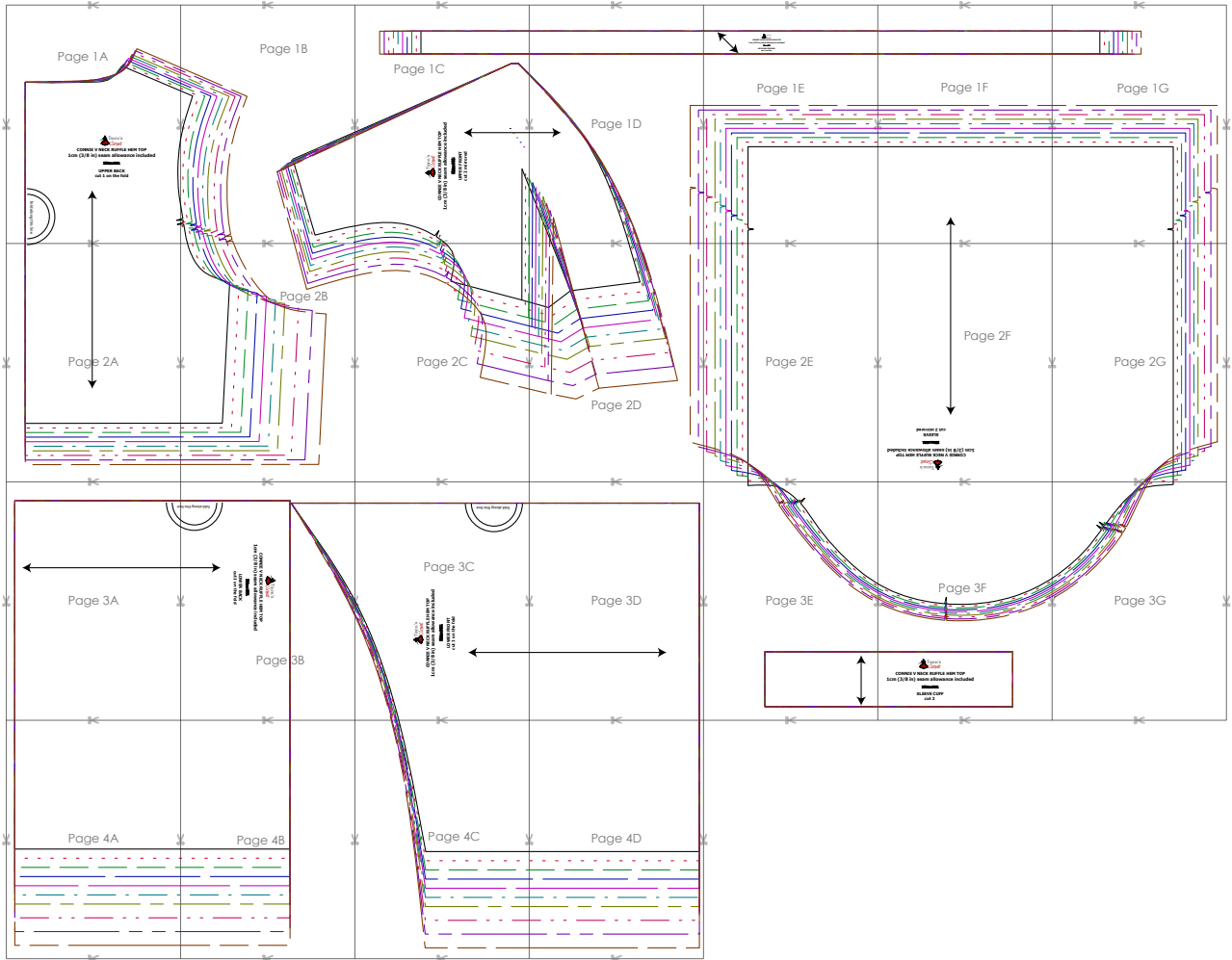
Size	XXS	XS	S	M	L	XL	XXL	3XL	4XL	5XL
Bust	80	84	88	92	96	100	104	110	116	122
Waist	60	64	68	72	76	80	84	90	96	102
Hip	88	92	96	100	104	108	112	118	124	130
Cross shoulder	35	36	37	38	39	40	41	42.5	44	45.5

Unit: inch

Size	XXS	XS	S	M	L	XL	XXL	3XL	4XL	5XL
Bust	31.5	33.1	34.6	36.2	37.8	39.4	40.9	43.3	45.7	48.0
Waist	23.6	25.2	26.8	28.3	29.9	31.5	33.1	35.4	37.8	40.2
Hip	34.6	36.2	37.8	39.4	40.9	42.5	44.1	46.5	48.8	51.2
Cross shoulder	13.8	14.2	14.6	15.0	15.4	15.7	16.1	16.7	17.3	17.9

For more ideas and free sewing patterns, visit <http://tianascloset.com>

PATTERN LAYOUT



LEGEND

- SIZE XXS
- SIZE XS
- SIZE S
- SIZE M
- SIZE L
- SIZE XL
- SIZE XXL
- SIZE 3XL
- SIZE 4XL
- SIZE 5XL

Page 1A

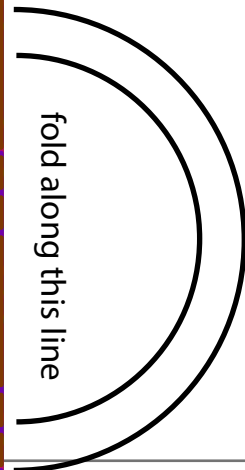


CONNIE V NECK RUFFLE HEM TOP
1cm (3/8 in) seam allowance included

Size: 2XS

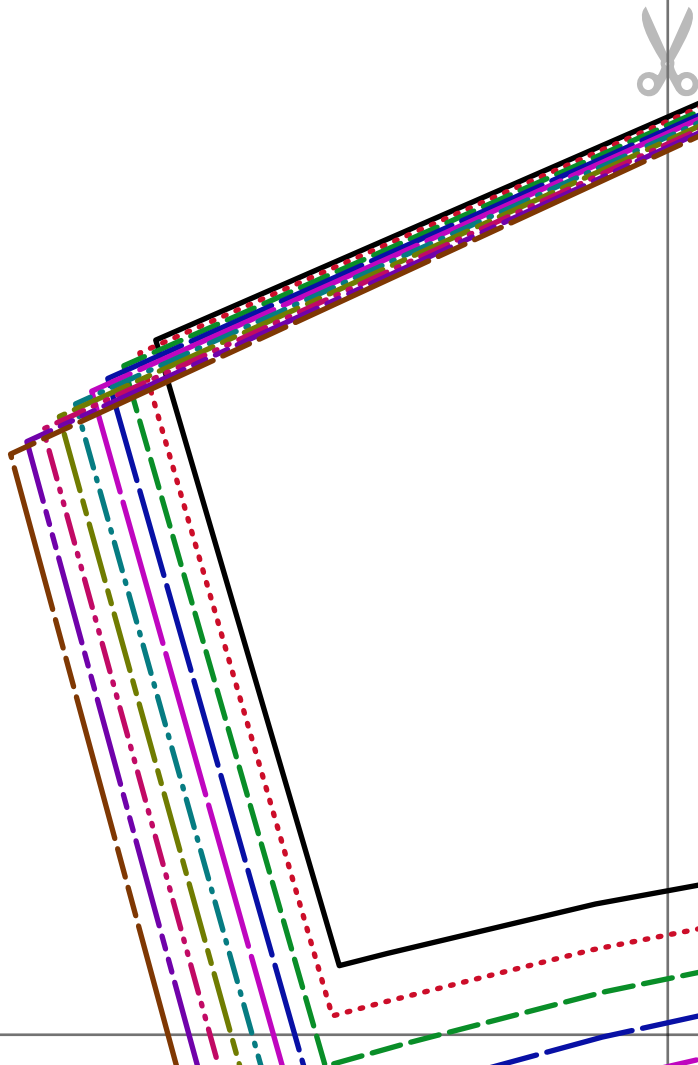
UPPER BACK
cut 1 on the fold

fold along this line





Page 1B



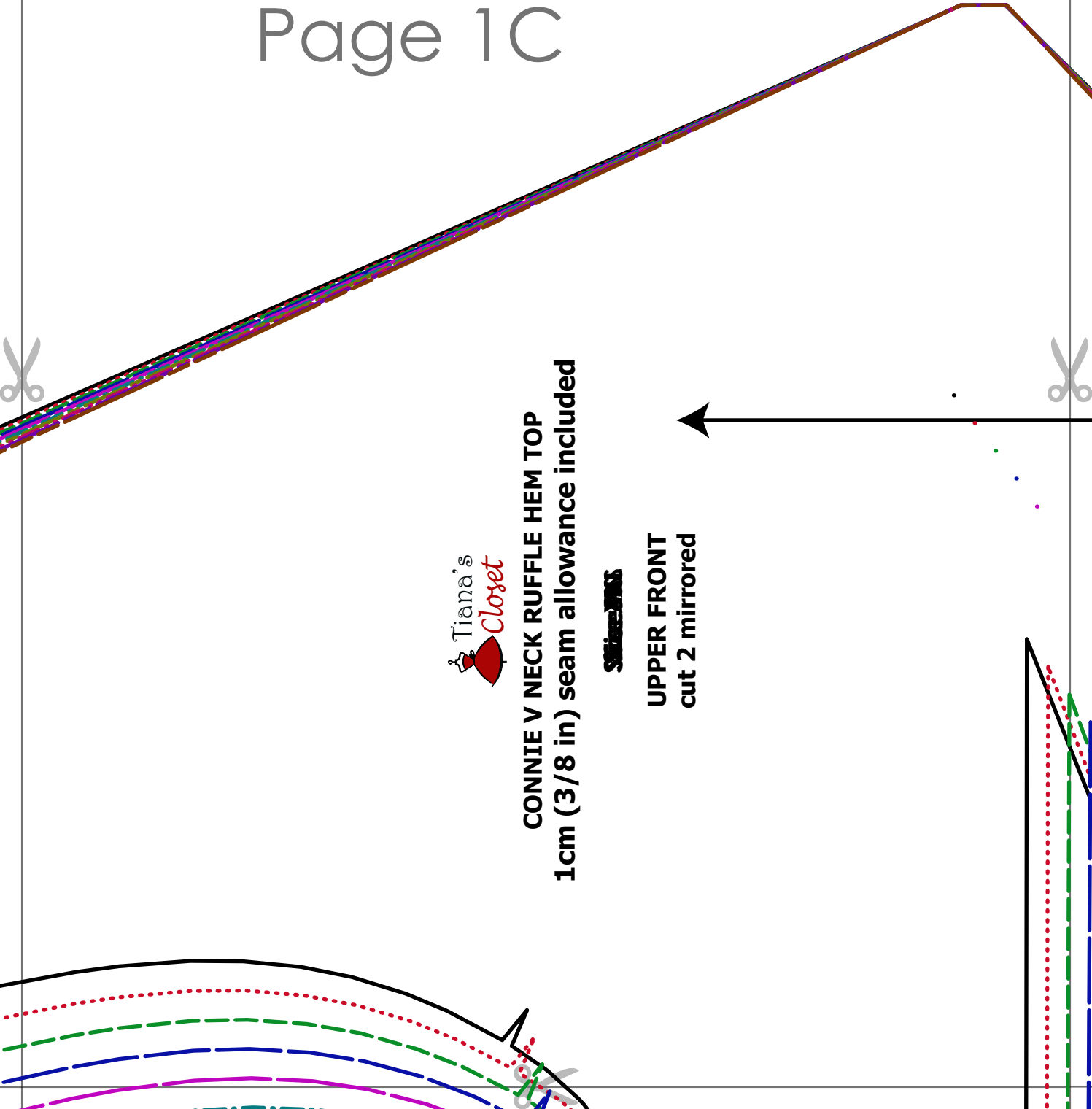
Page 1C



CONNIE V NECK RUFFLE HEM TOP
1cm (3/8 in) seam allowance included

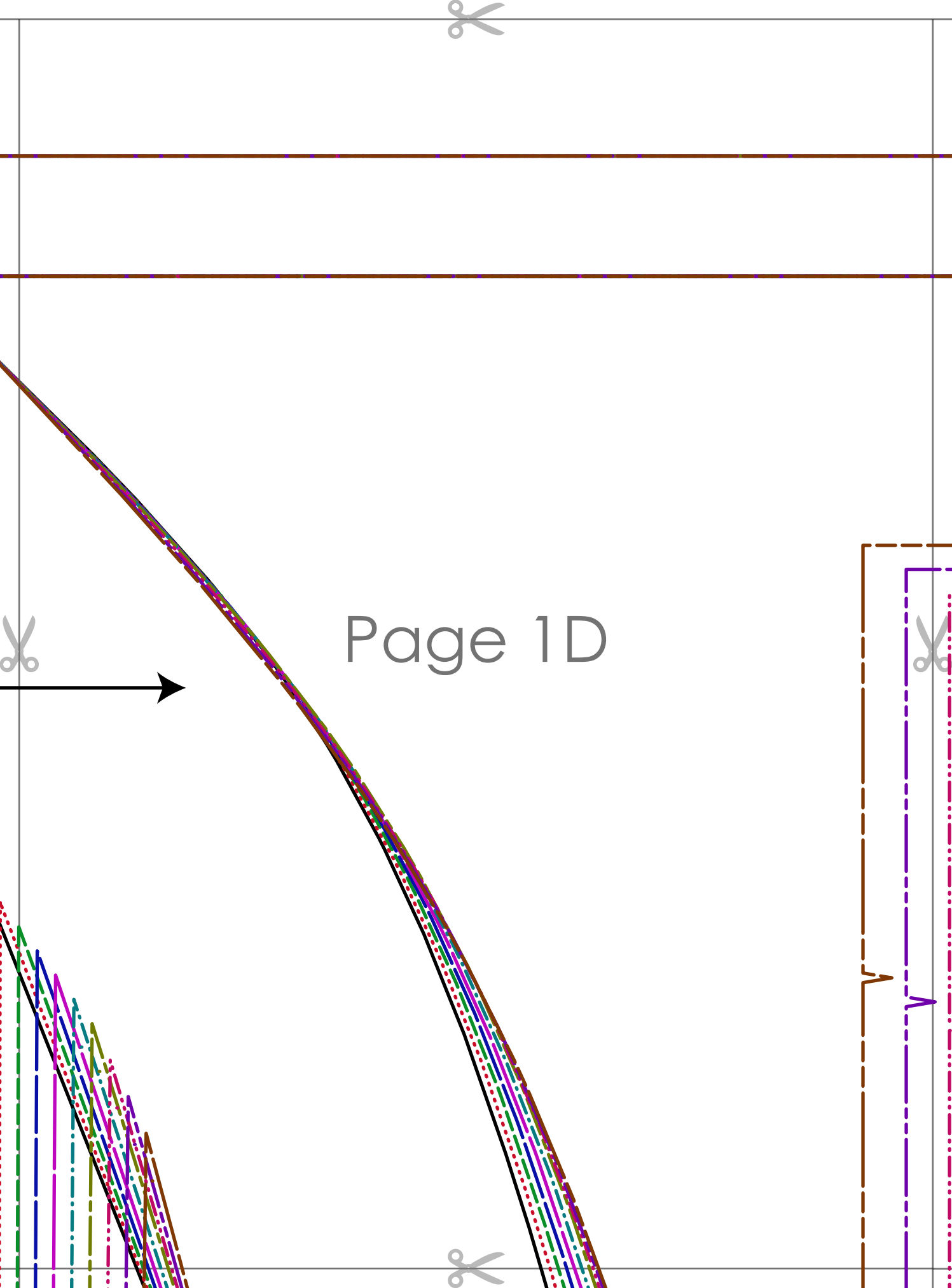
~~SHIRAZ~~

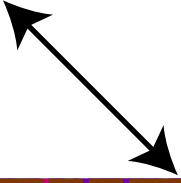
UPPER FRONT
cut 2 mirrored





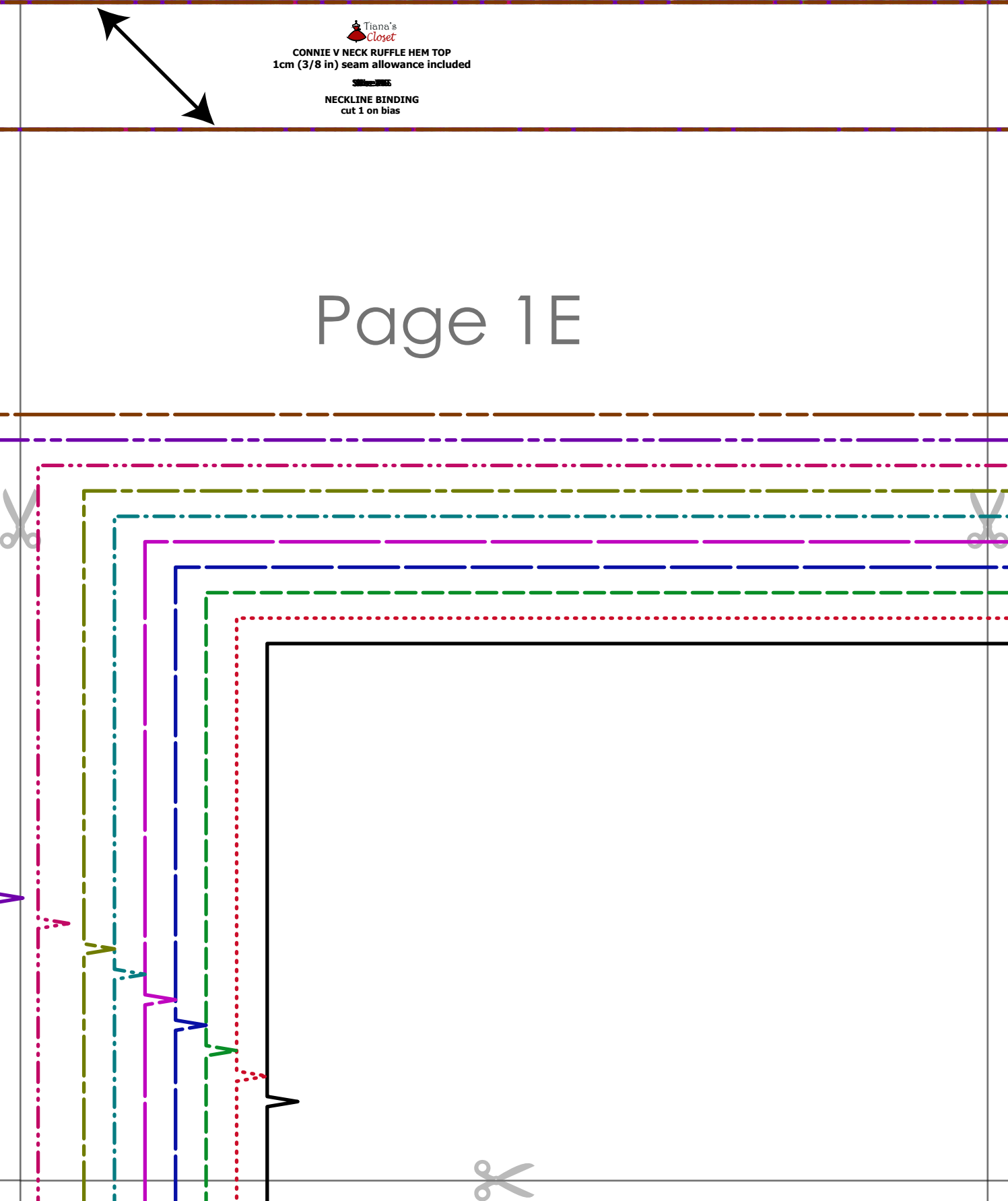
Page 1D





Tiena's
Closet
CONNIE V NECK RUFFLE HEM TOP
1cm (3/8 in) seam allowance included
~~SEAMING~~
NECKLINE BINDING
cut 1 on bias

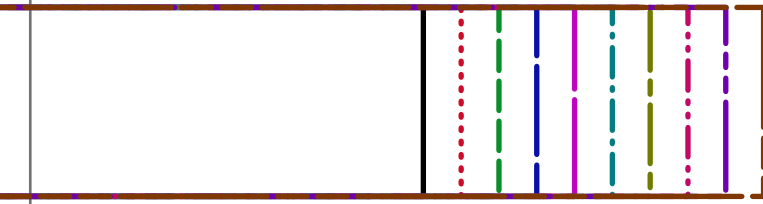
Page 1E



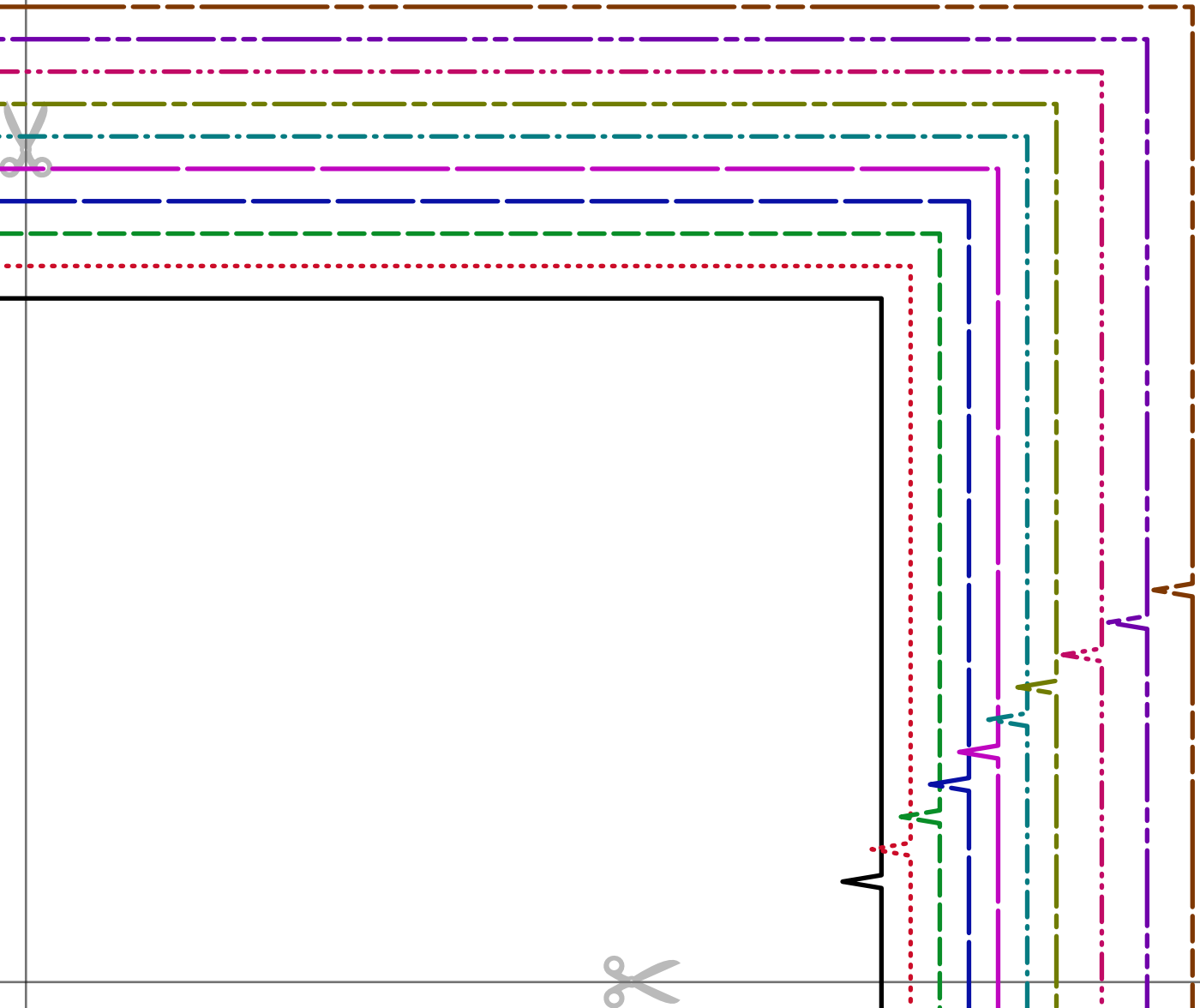


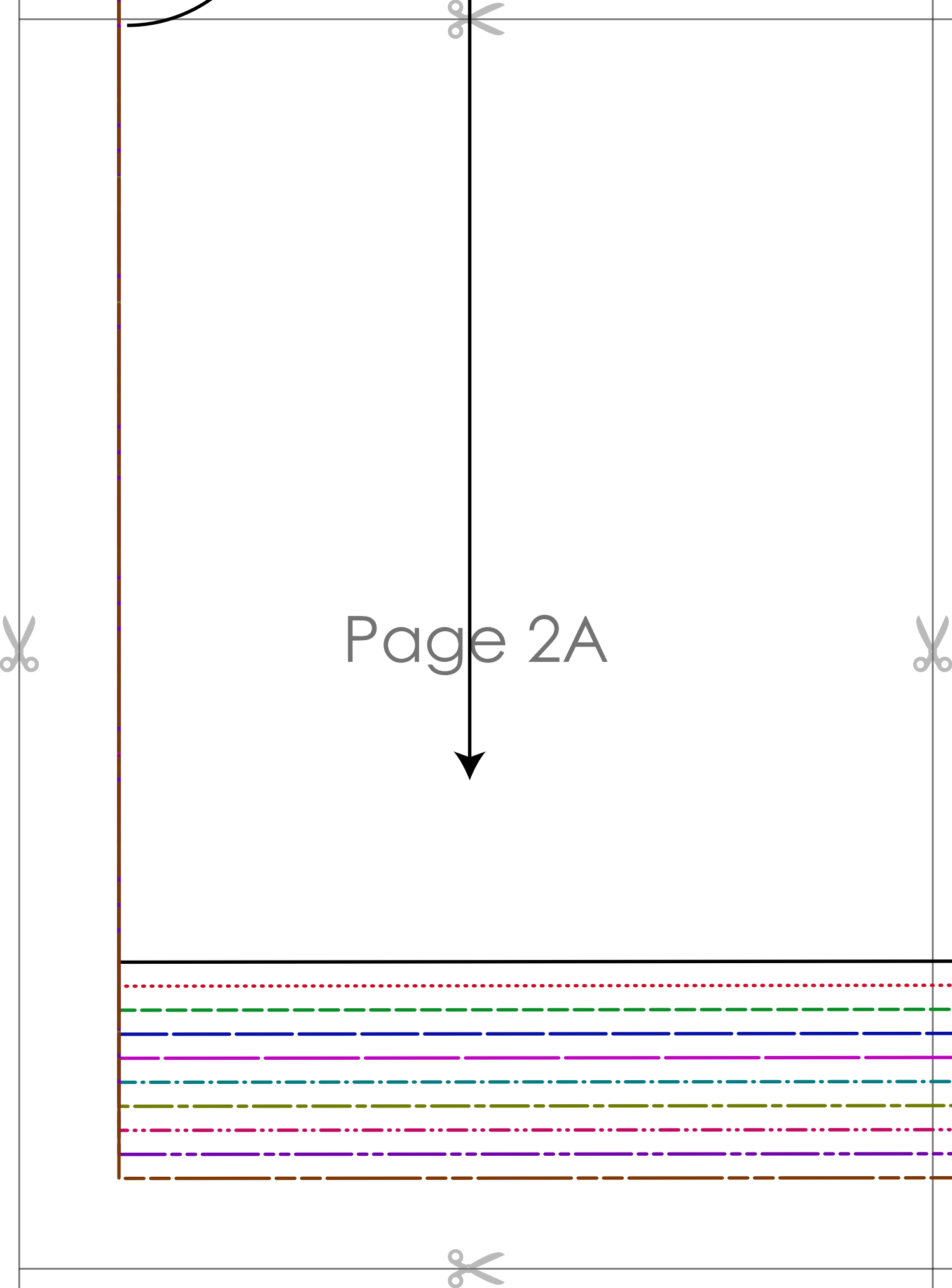
Page 1F





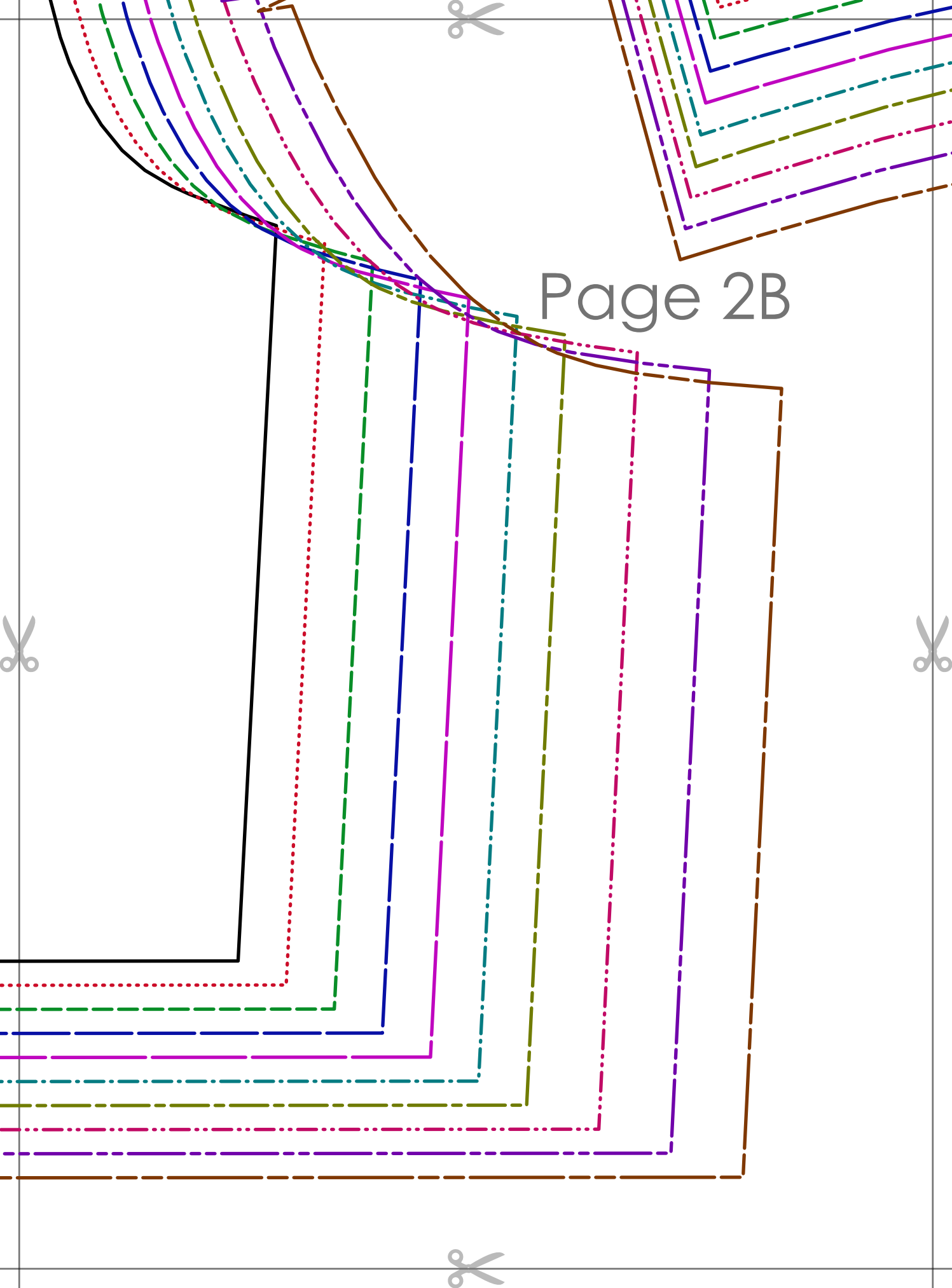
Page 1G

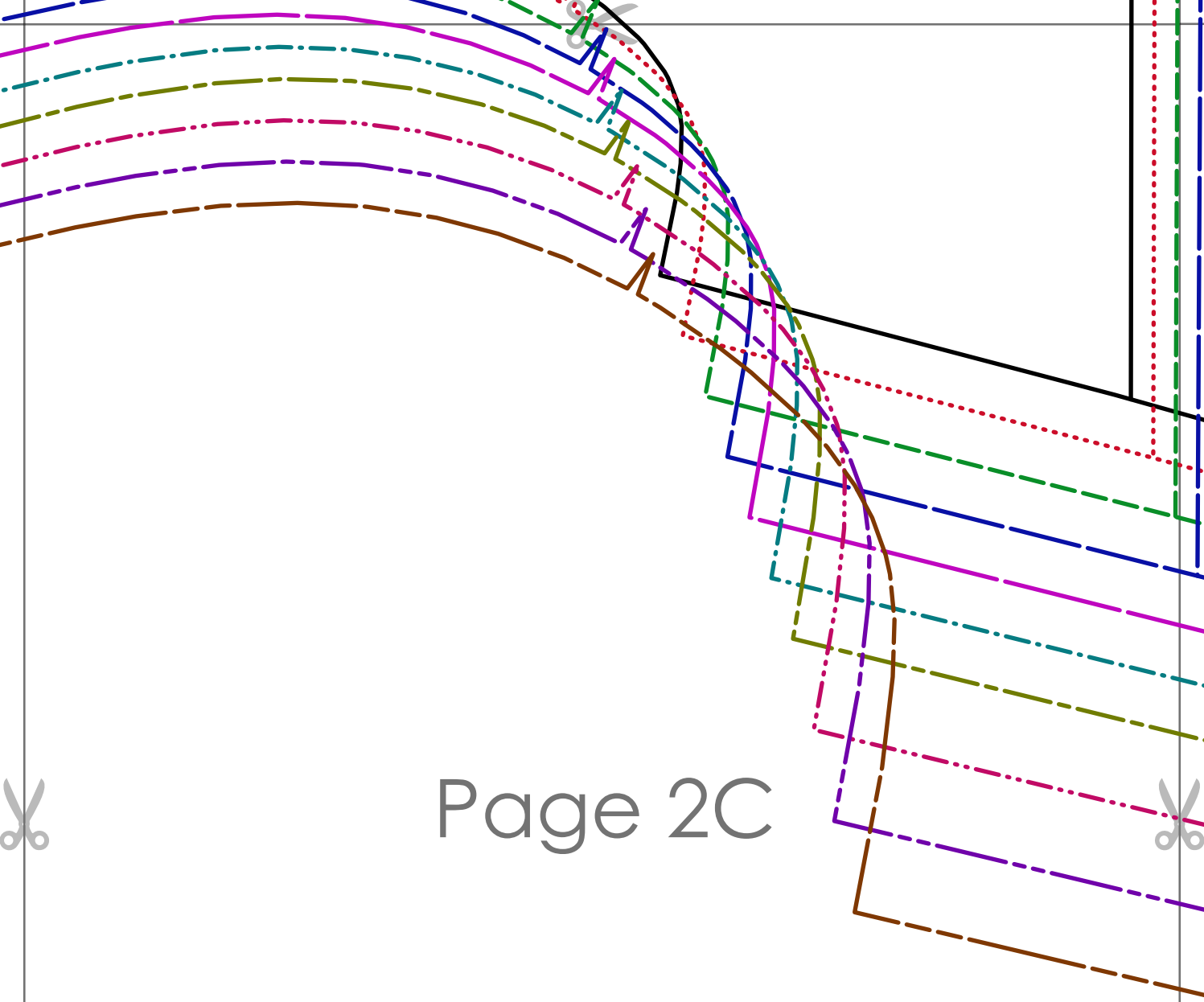




Page 2A

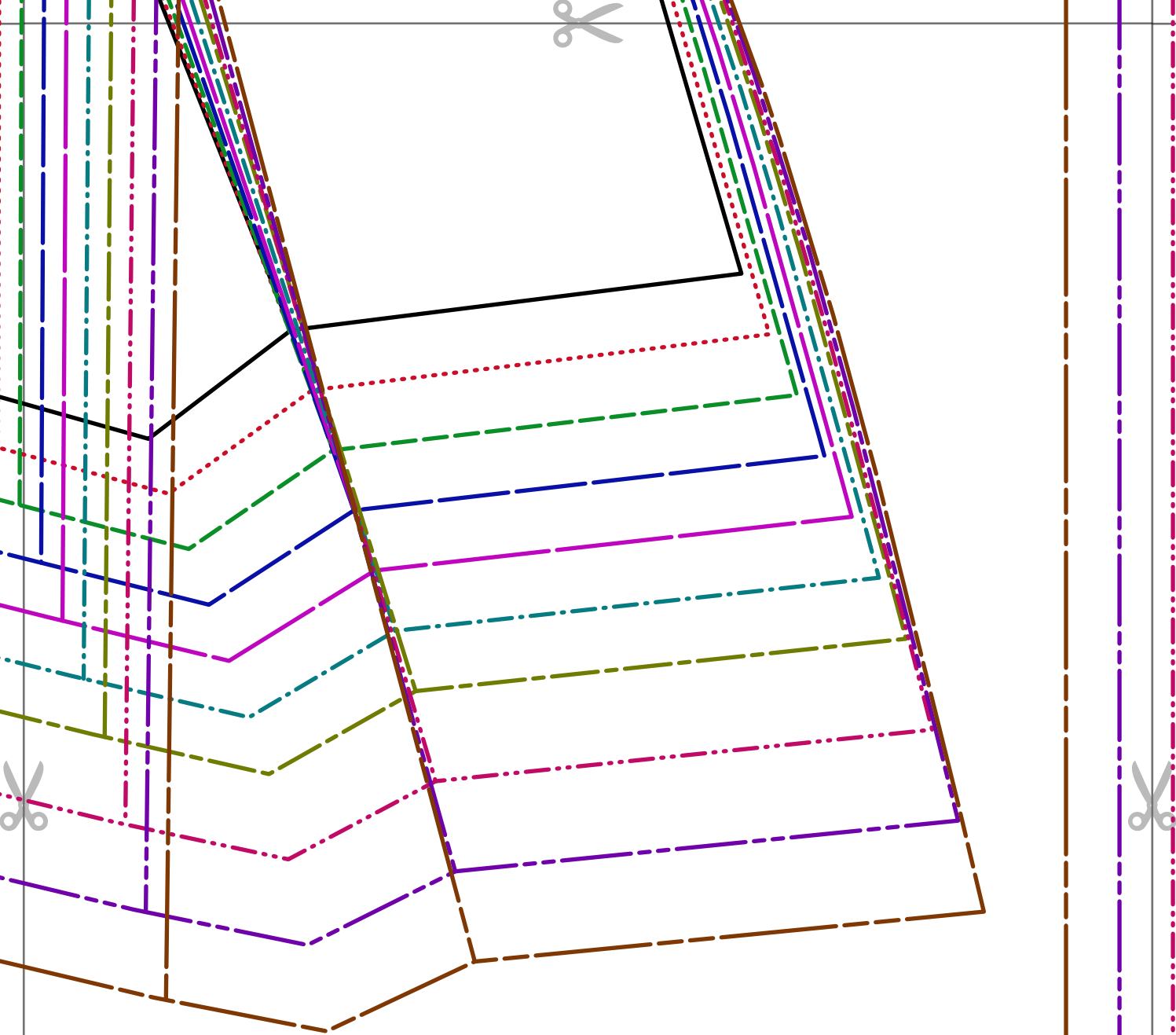
Page 2B





Page 2C



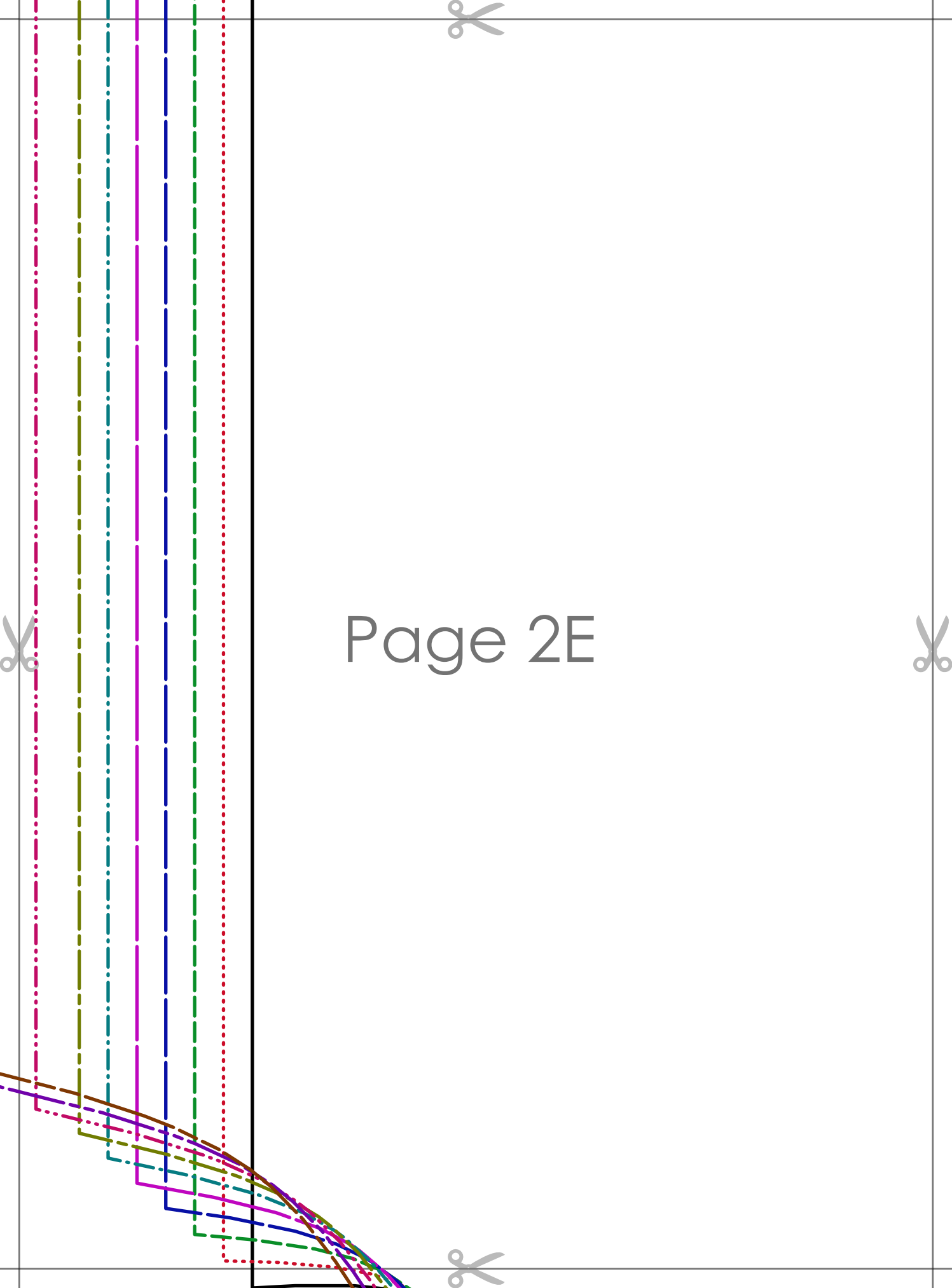


Page 2D





Page 2E



Page 2F



cut 2 mirrored

SLEEVE

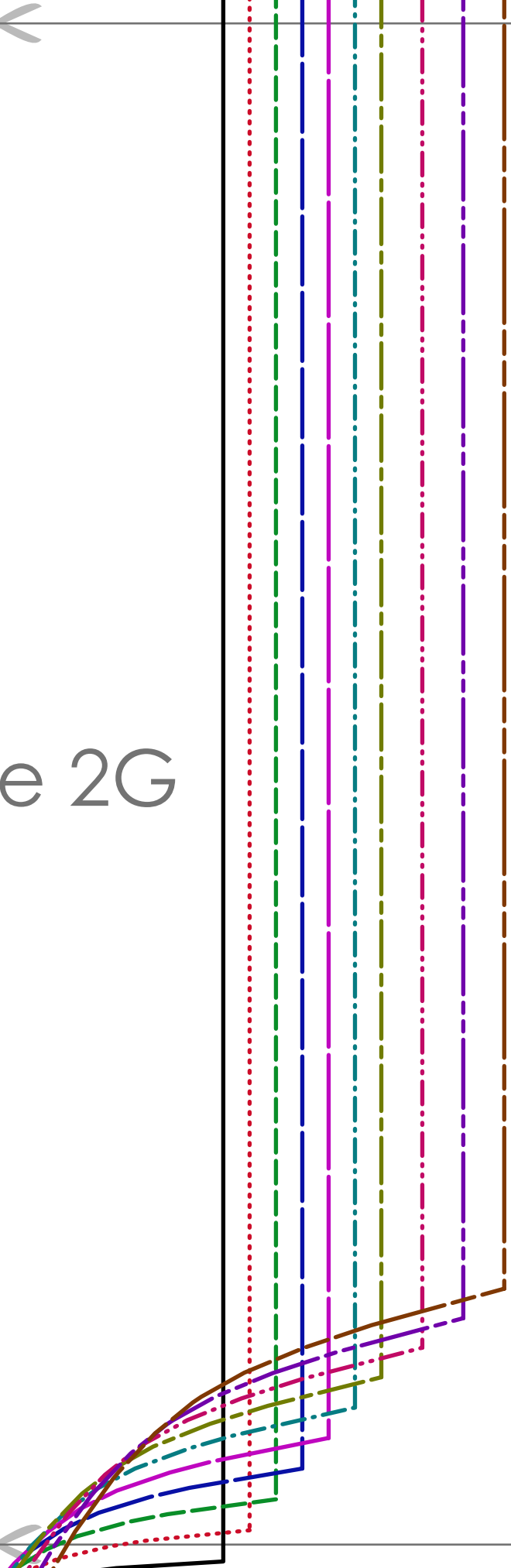
~~SLEEVES~~

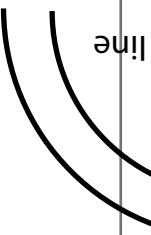
1cm (3/8 in) seam allowance included

CONNIE V NECK RUFFLE HEM TOP

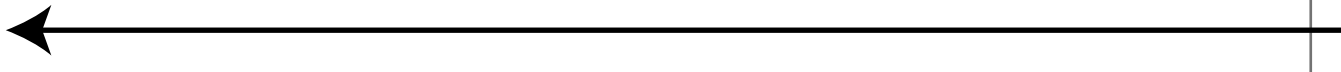


Page 2G





line



Page 3A

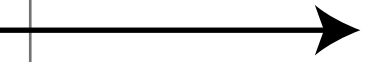
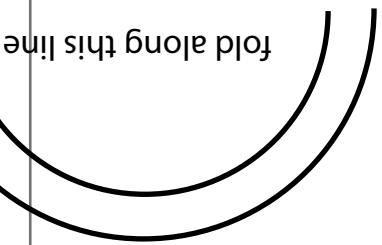
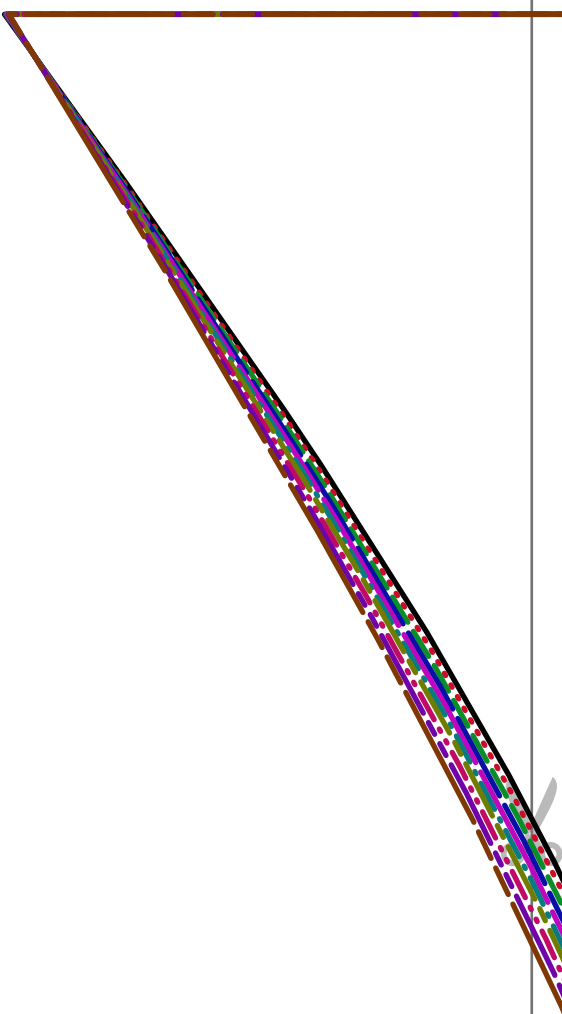




Tiana's
Closet

CONNIE V NECK RUFFLE HEM TOP
1cm (3/8 in) seam allowance included

~~SEAMS~~
LOWER BACK
cut 1 on the fold

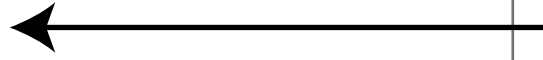




CONNIE V NECK RUFFLE HEM TOP
1cm (3/8 in) seam allowance included

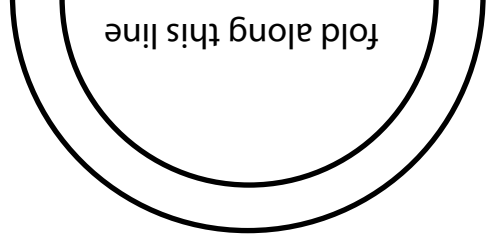
STITCHES

LOWER FRONT
cut 1 on the fold



Page 3C

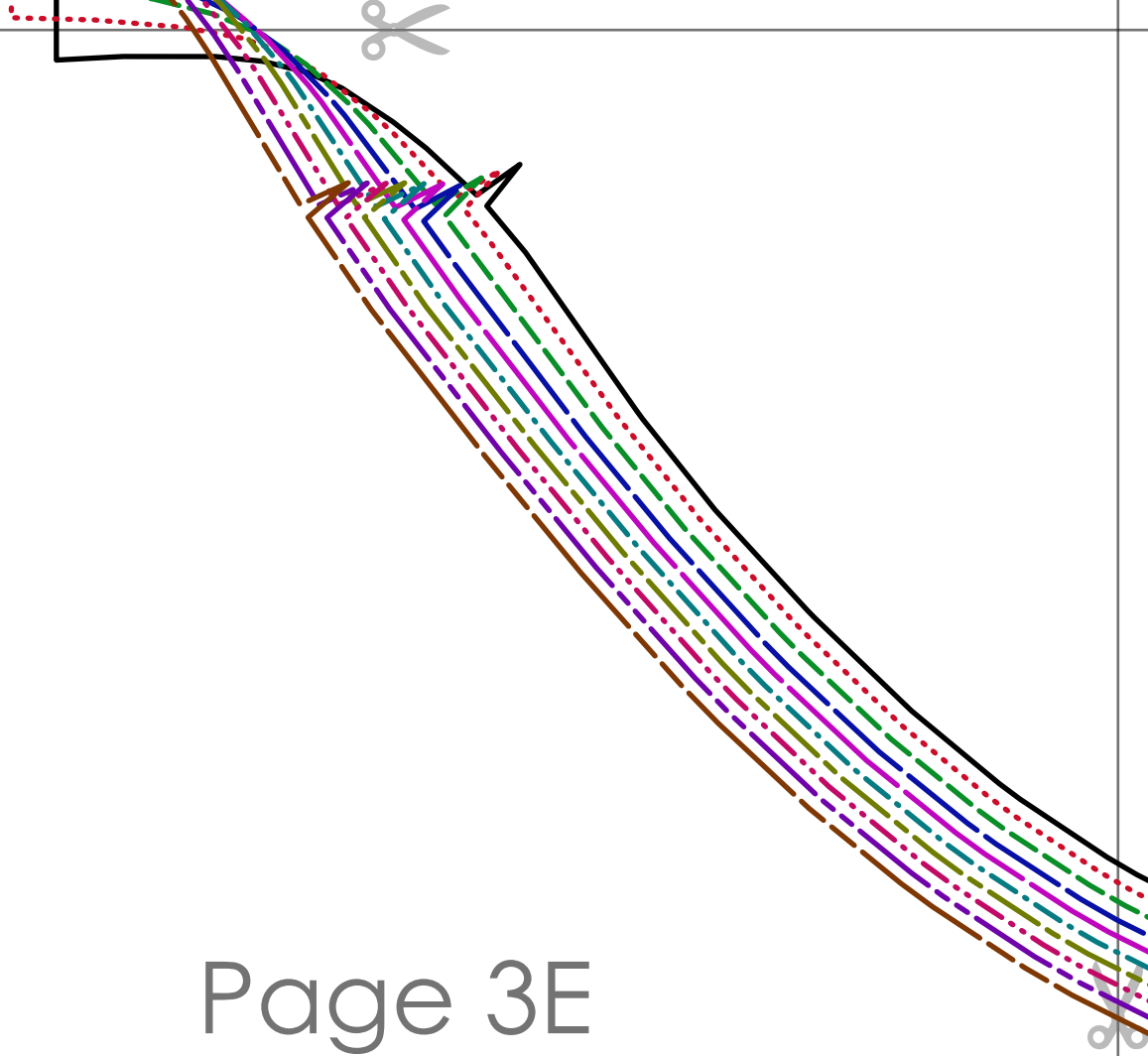
fold along this line





Page 3D





Page 3E





Page 3F

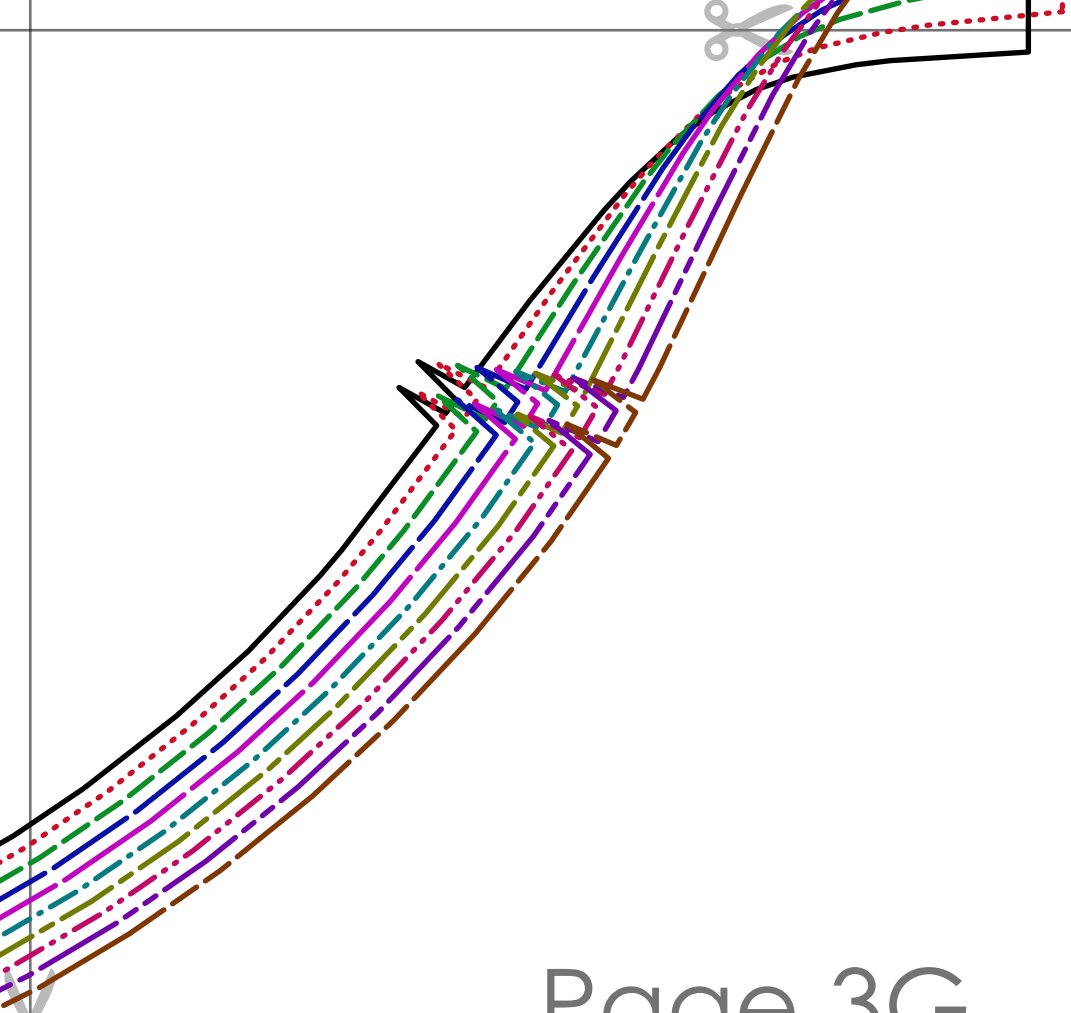


CONNIE V NECK RUFFLE HEM TOP
1cm (3/8 in) seam allowance included

~~Size: M~~

SLEEVE CUFF
cut 2





Page 3G





Page 4A



A series of ten horizontal lines for handwriting practice, each with a different color and style:

- Red dotted line
- Green dashed line
- Blue solid line
- Magenta solid line
- Teal dash-dot line
- Olive dashed line
- Pink dotted line
- Purple dashed line
- Brown dashed line



Page 4B



Handwriting practice area with multiple horizontal lines in various colors and styles (solid, dashed, dotted, dash-dot) for tracing and writing.



Page 4C



A large graphic on the right side of the page, featuring a slanted left edge with multiple parallel lines in various colors and styles (solid, dashed, dotted, dash-dot). The lines transition from a slanted orientation at the top to a horizontal orientation at the bottom. The colors include red, green, blue, purple, teal, olive, pink, and brown.



Page 4D



A series of horizontal lines for handwriting practice, including a solid black line at the top, followed by a dotted red line, a dashed green line, a dashed blue line, a dashed purple line, a dash-dot teal line, a dashed olive green line, a dash-dot magenta line, a dashed purple line, and a dashed brown line at the bottom.