

## PRINTING INSTRUCTIONS

- Tiana's Closet sewing patterns are made in Layered PDF format, which means all sizes are saved in one file and can be shown or hidden. It is recommended to use Adobe Acrobat Reader (paid version on Mac OS, free on Windows) or Foxit PDF Reader (free, works on Windows only) to read the file correctly. In order to choose the desired size(s), go to Layers tab of your PDF reader, uncheck all boxes except for the desired size(s) and the box Print for all sizes.

- When printing the pattern, go to Print settings, in the tab Scale choose Custom scale: 100% (or Scaling: None or Actual Size) to print true to size. Note: some computers print smaller than true size even when you choose 100% scale, so you will have to adjust the scale to a little larger than 100% and measure the test square until you get the true size using the test rulers

- Always print the first page of the file and measure to avoid waste of paper.

- After printing the pattern, cut the pages along the lines with scissors icon, align and tape the pages according to their sequences. For example, pages 1A, 1B, 1C, 1D... are lined up in one row from left to right, pages 1A, 2A, 3A, 3B... are lined up in one column from up to down.

- You can find photo instruction for printing sewing patterns on Tiana's Closet website:

<https://tianascloset.com/index.php/how-to-print-tianascloset-patterns/>

## SIZE TABLE

### WOMEN'S CLOTHING SIZE

- Sizing is based on body measurements.

- If between sizes, size up for woven fabric, size down for knit fabric.

Unit: centimeter

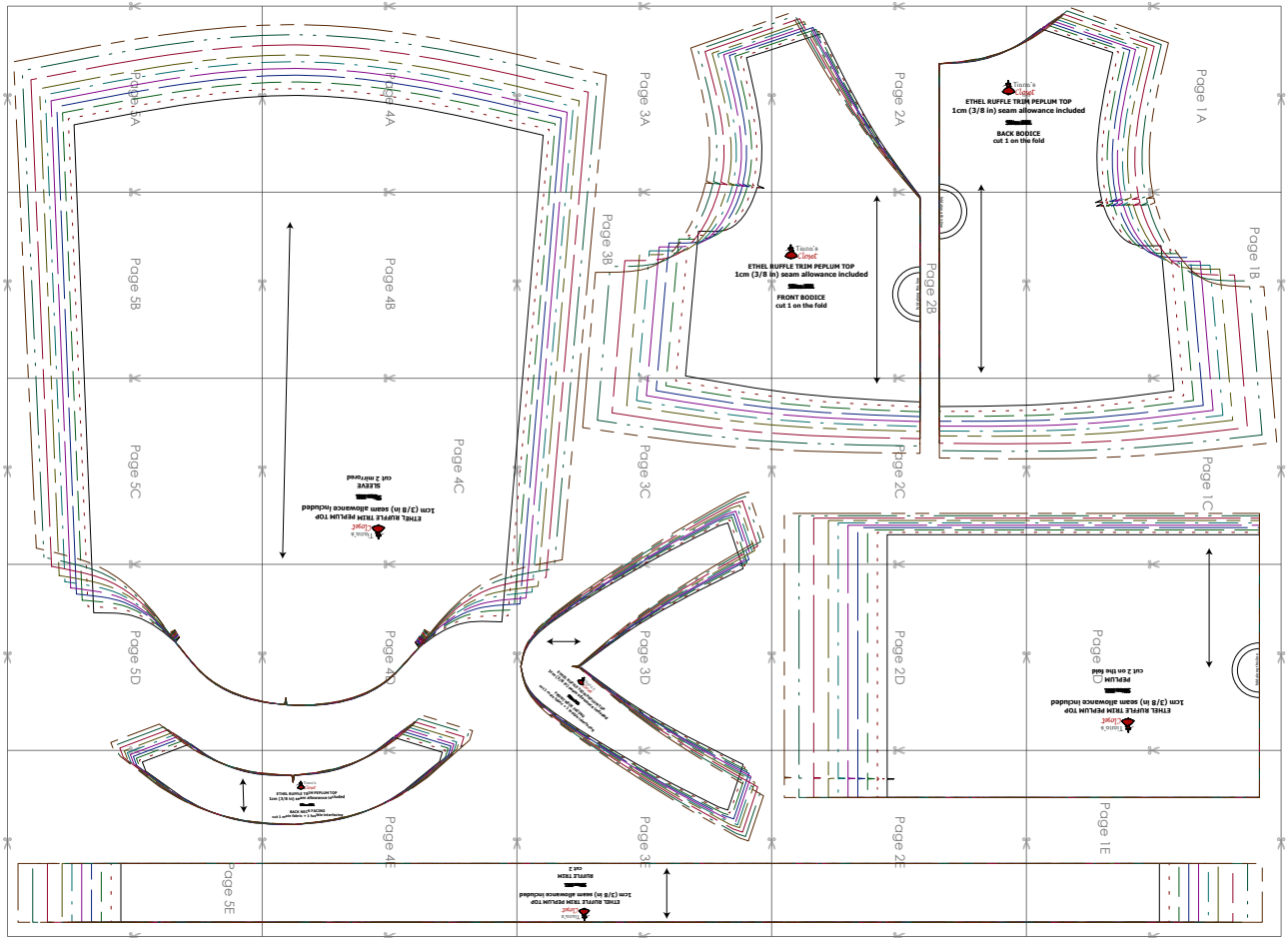
Size	XXS	XS	S	M	L	XL	XXL	3XL	4XL	5XL
<b>Bust</b>	80	84	88	92	96	100	104	110	116	122
<b>Waist</b>	60	64	68	72	76	80	84	90	96	102
<b>Hip</b>	88	92	96	100	104	108	112	118	124	130
<b>Cross shoulder</b>	35	36	37	38	39	40	41	42.5	44	45.5

Unit: inch

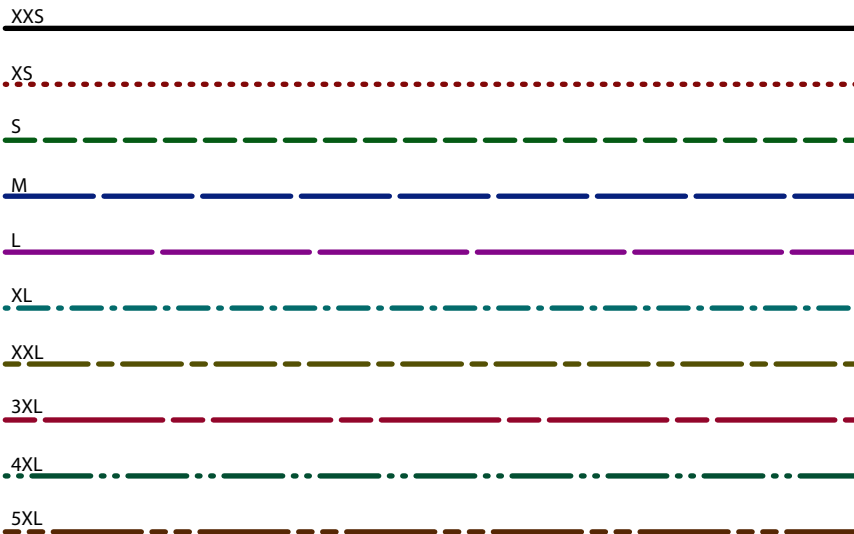
Size	XXS	XS	S	M	L	XL	XXL	3XL	4XL	5XL
<b>Bust</b>	31.5	33.1	34.6	36.2	37.8	39.4	40.9	43.3	45.7	48.0
<b>Waist</b>	23.6	25.2	26.8	28.3	29.9	31.5	33.1	35.4	37.8	40.2
<b>Hip</b>	34.6	36.2	37.8	39.4	40.9	42.5	44.1	46.5	48.8	51.2
<b>Cross shoulder</b>	13.8	14.2	14.6	15.0	15.4	15.7	16.1	16.7	17.3	17.9

For more ideas and free sewing patterns, visit <http://tianascloset.com>

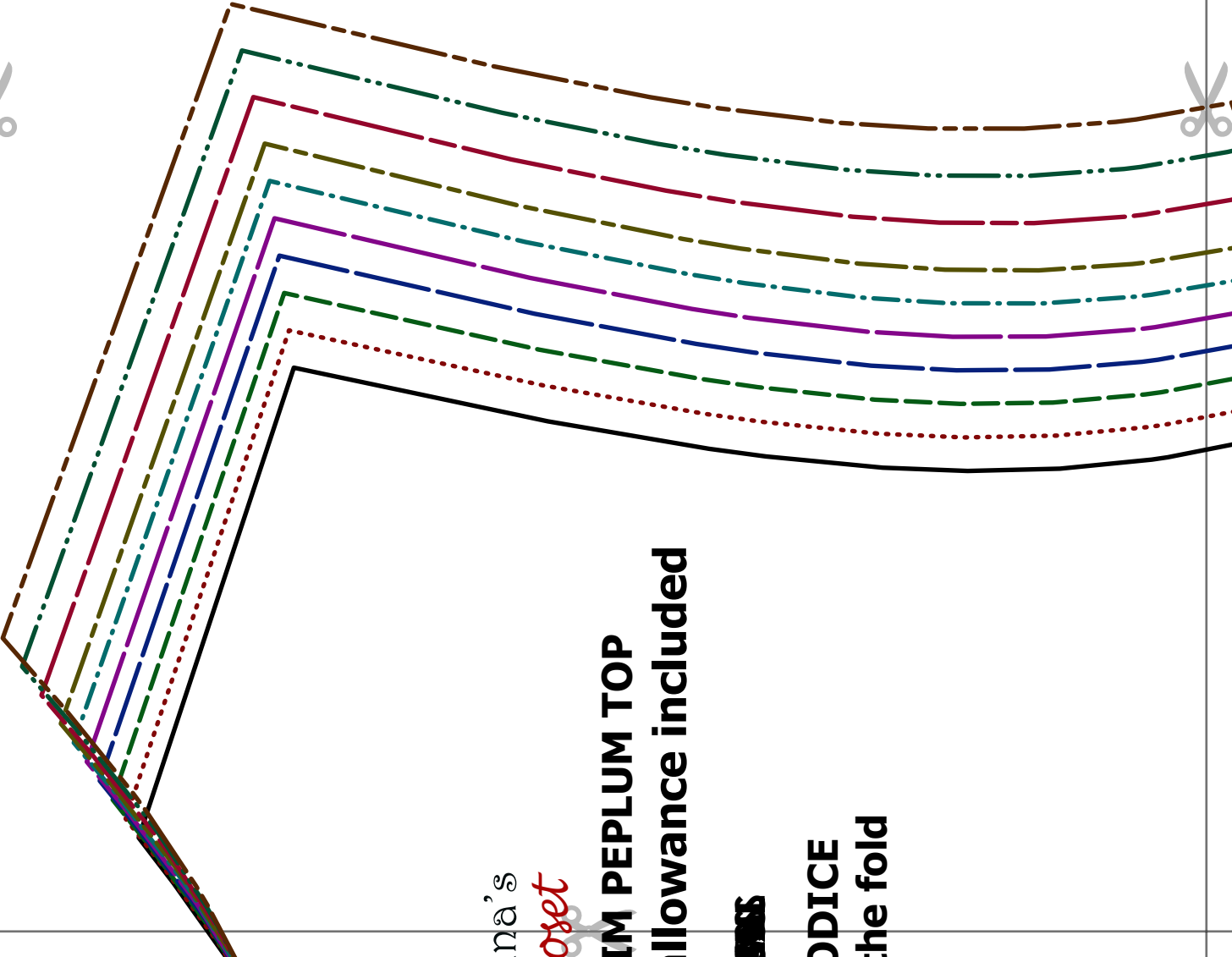
# PATTERN LAYOUT



## LEGEND



Page 1A



na's

o set

IM PEPLUM TOP

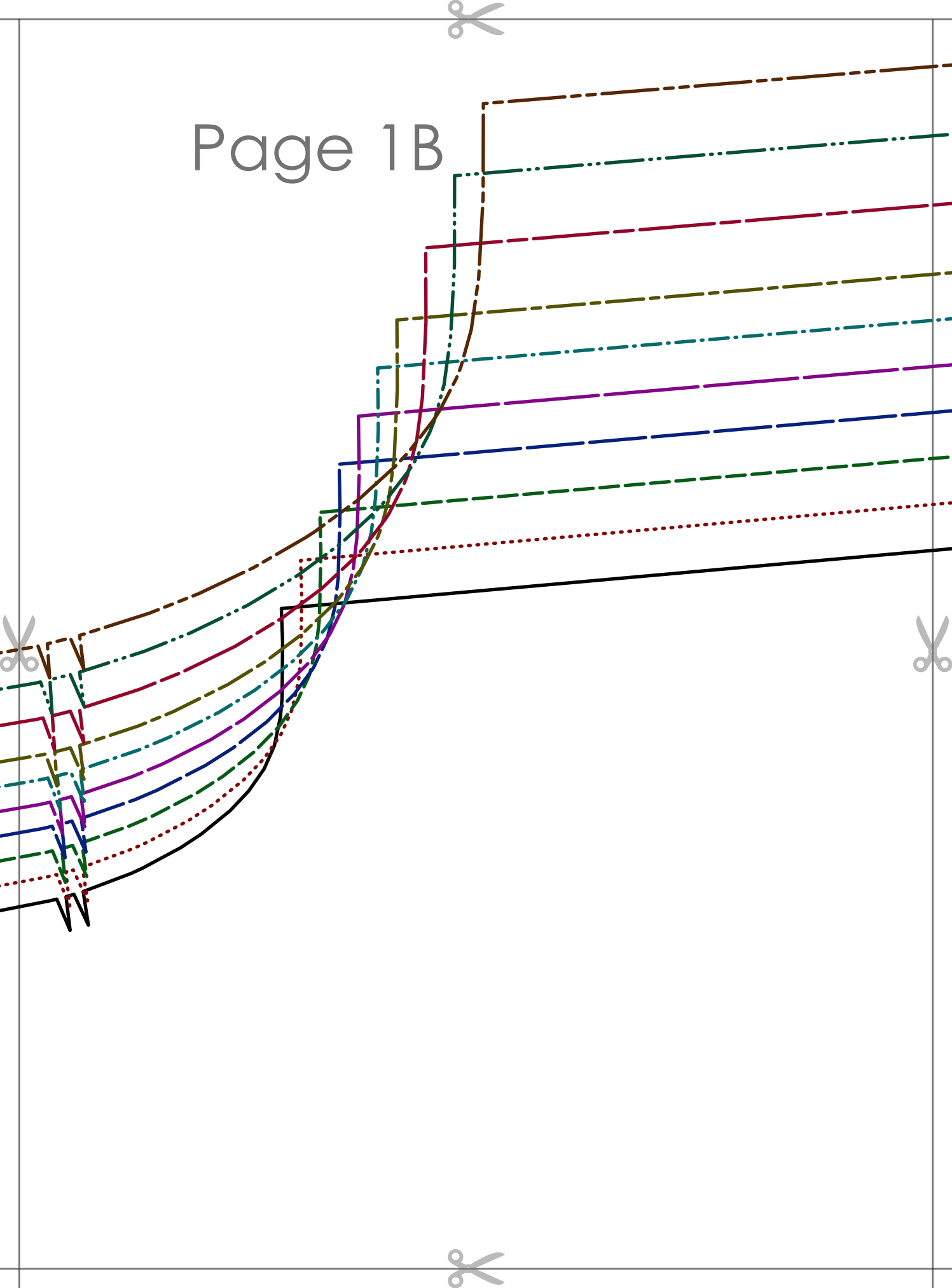
allowance included

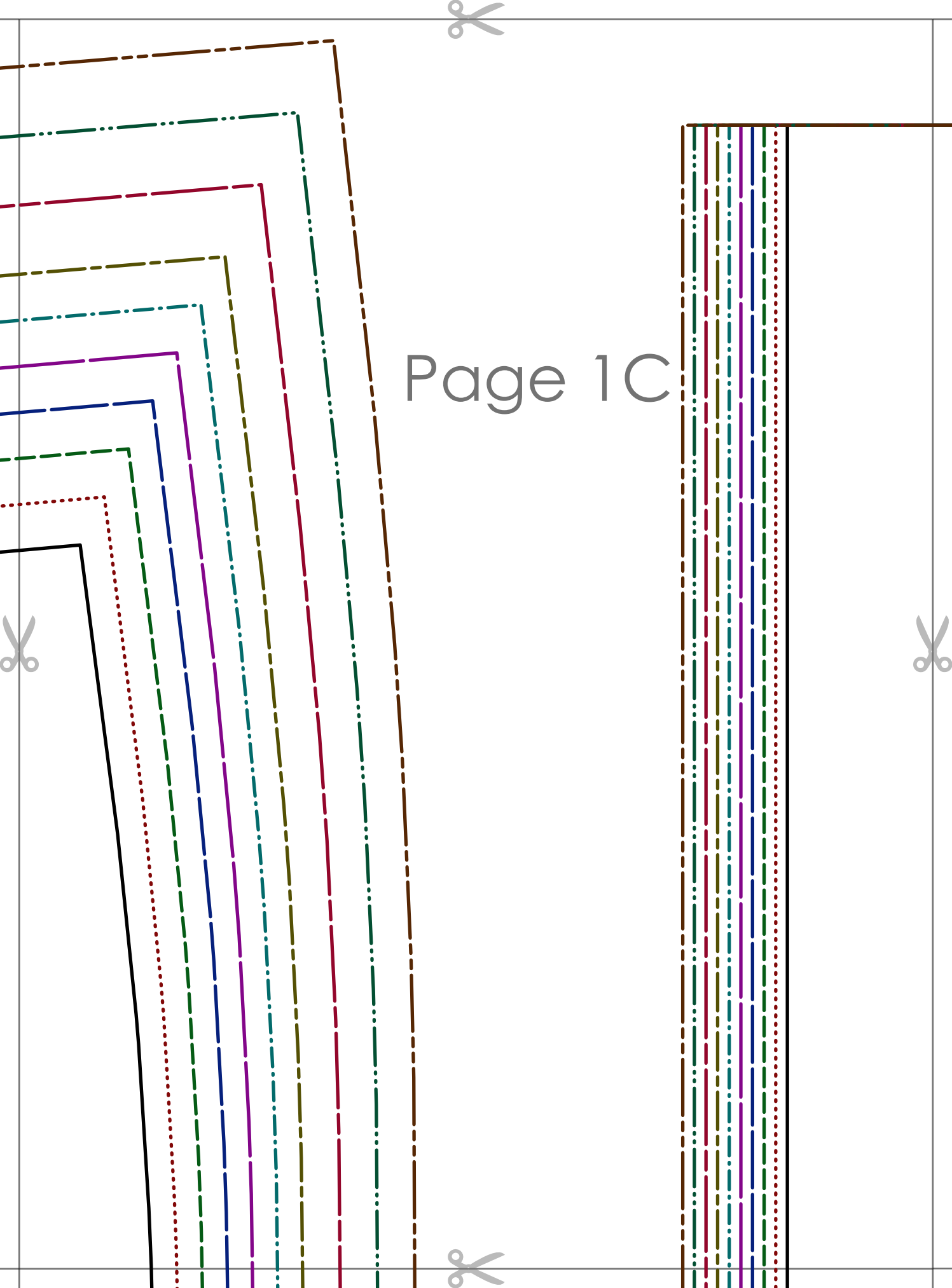
SS

DDICE

the fold

Page 1B





Page 1C





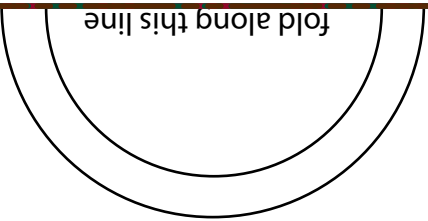
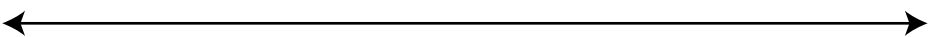
**ETHEL RUFFLE TRIM PEPLUM TOP**  
**1cm (3/8 in) seam allowance included**

~~SIZES~~

**PEPLUM**

**cut 2 on the fold**

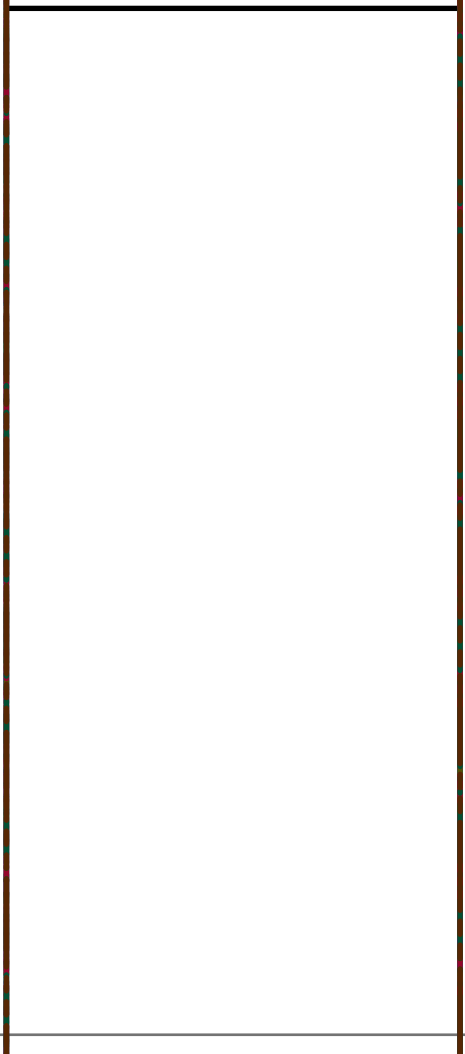
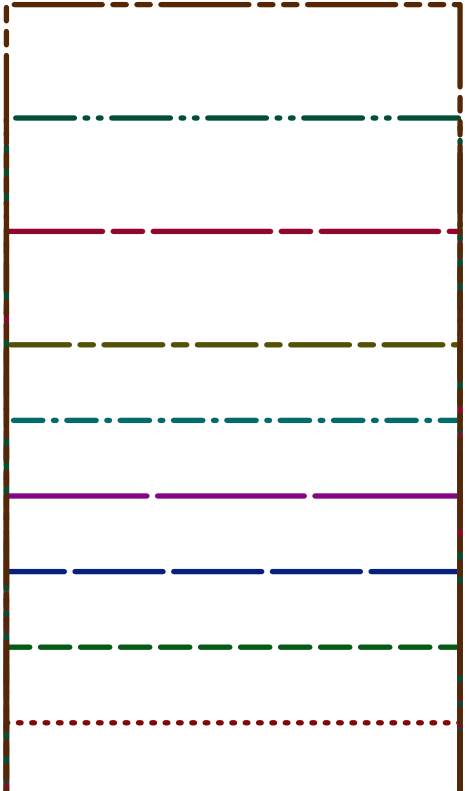
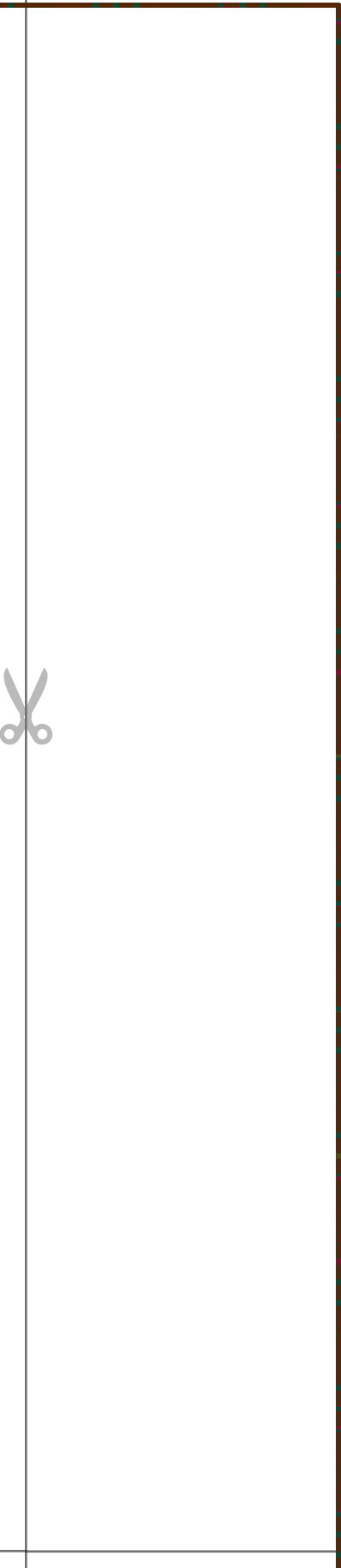
Page 1D



fold along this line



Page 1E





**ETHEL RUFFLE TRIM**  
**1cm (3/8 in) seam allo**

**SWISS**

**BACK BODY**  
**cut 1 on the**

Page 2A







**RUFFLE TRIM PEPLUM TOP**  
**in) seam allowance included**

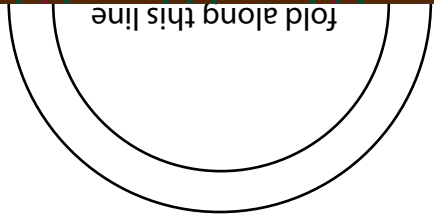
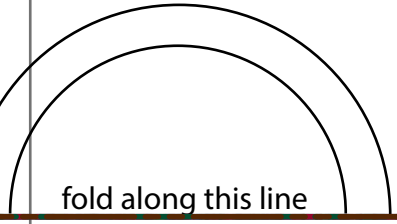
**Size 20**

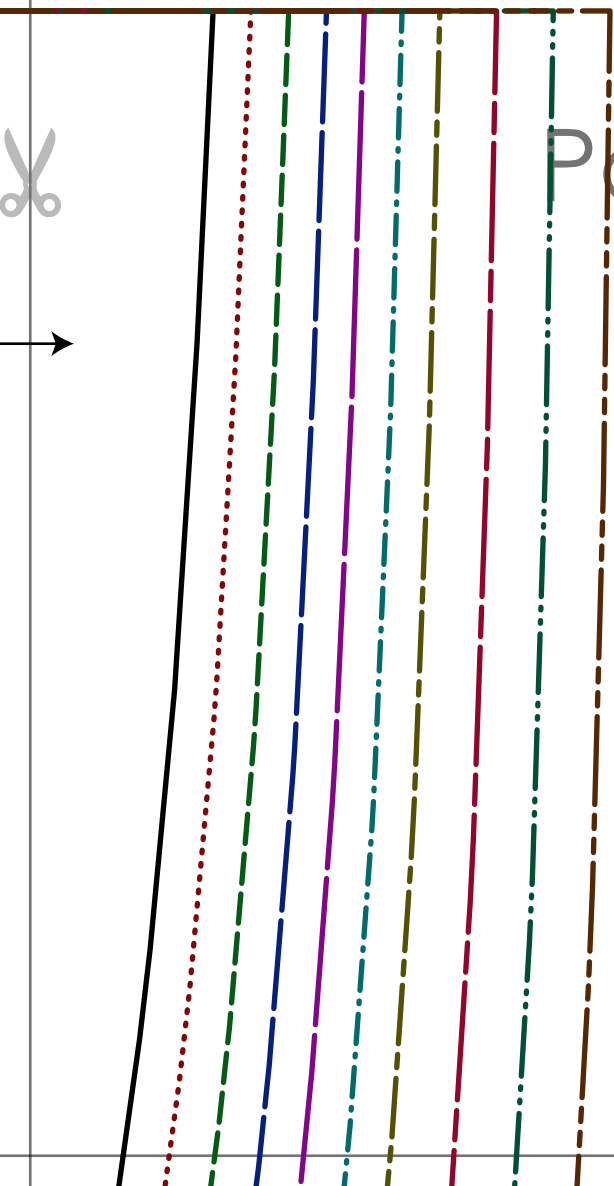
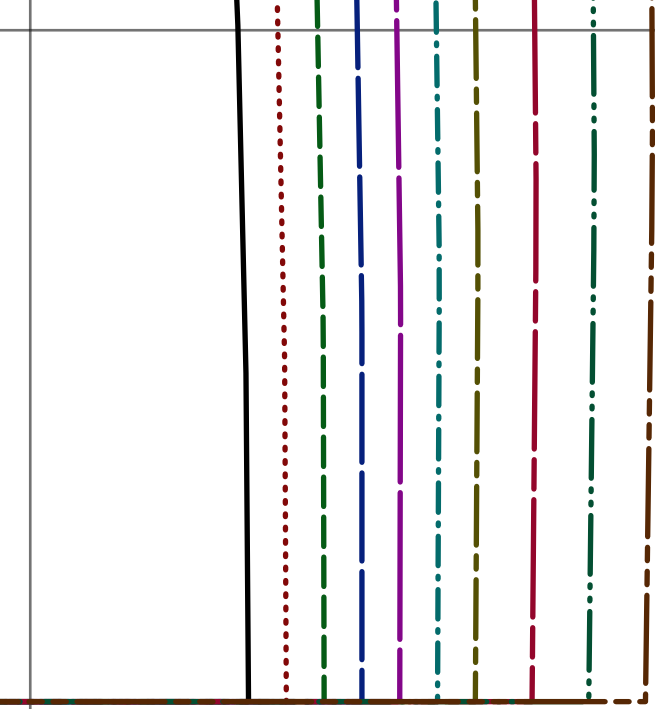
**FRONT BODICE**  
**cut 1 on the fold**

Page 2B

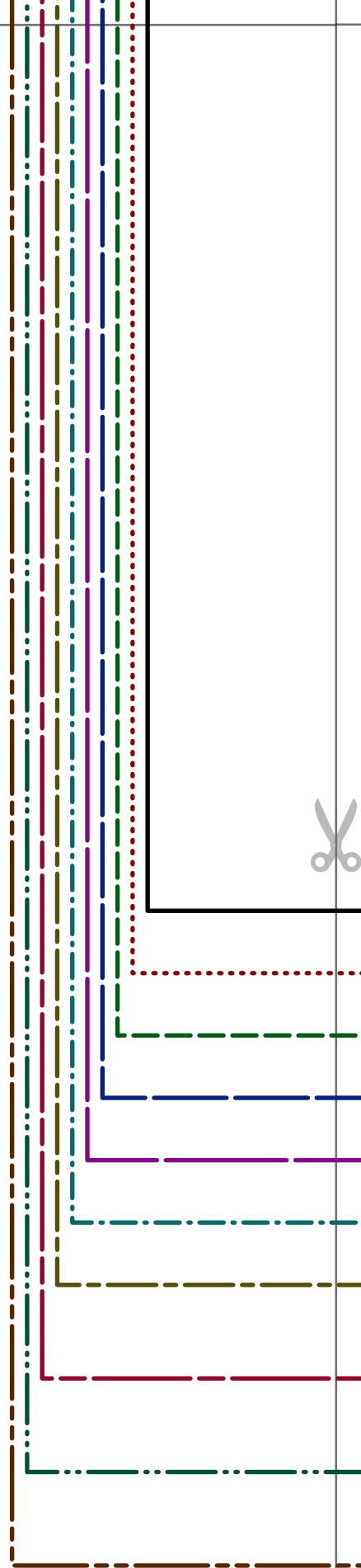
fold along this line

fold along this line



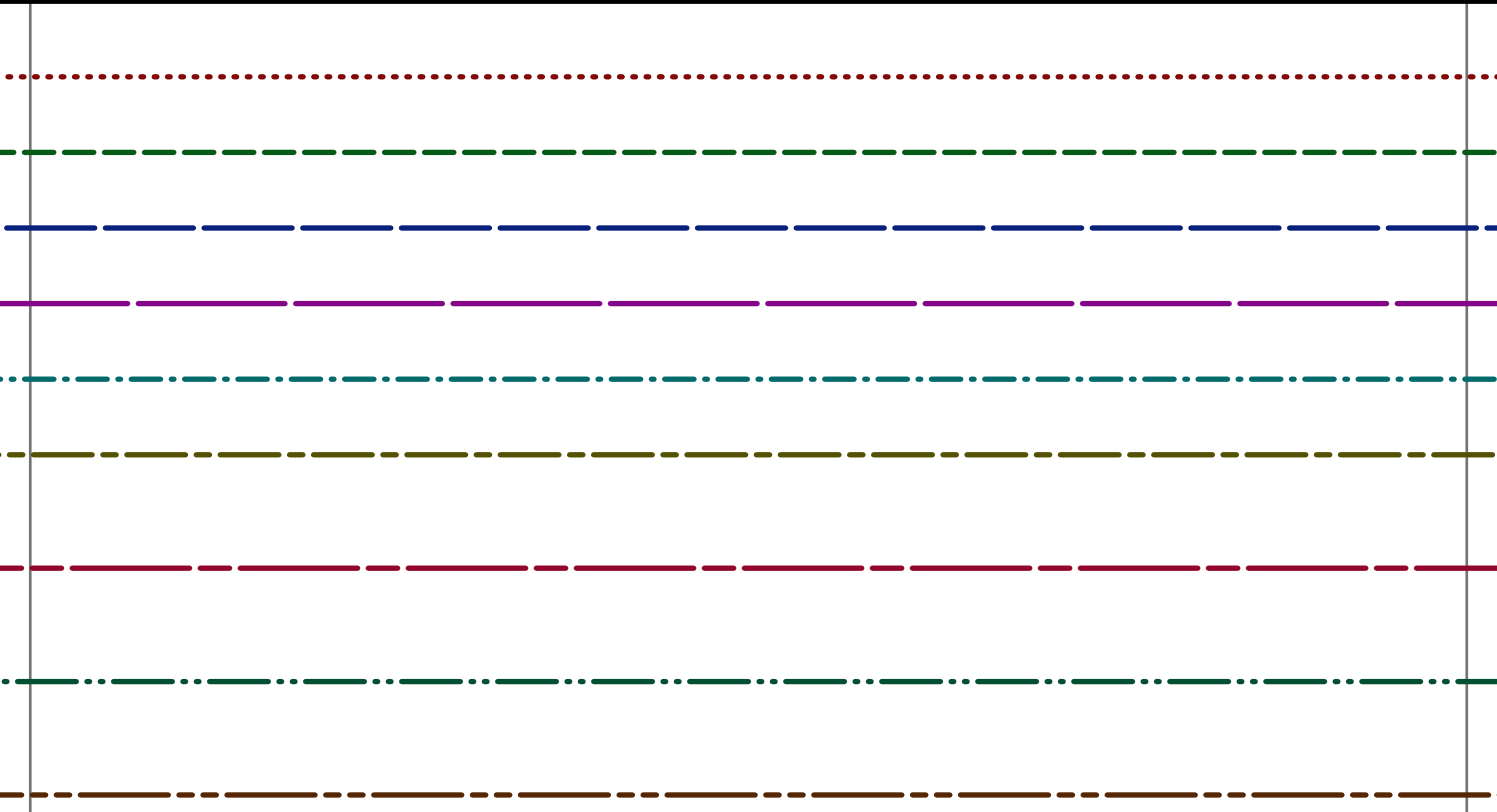


Page 2C





Page 2D



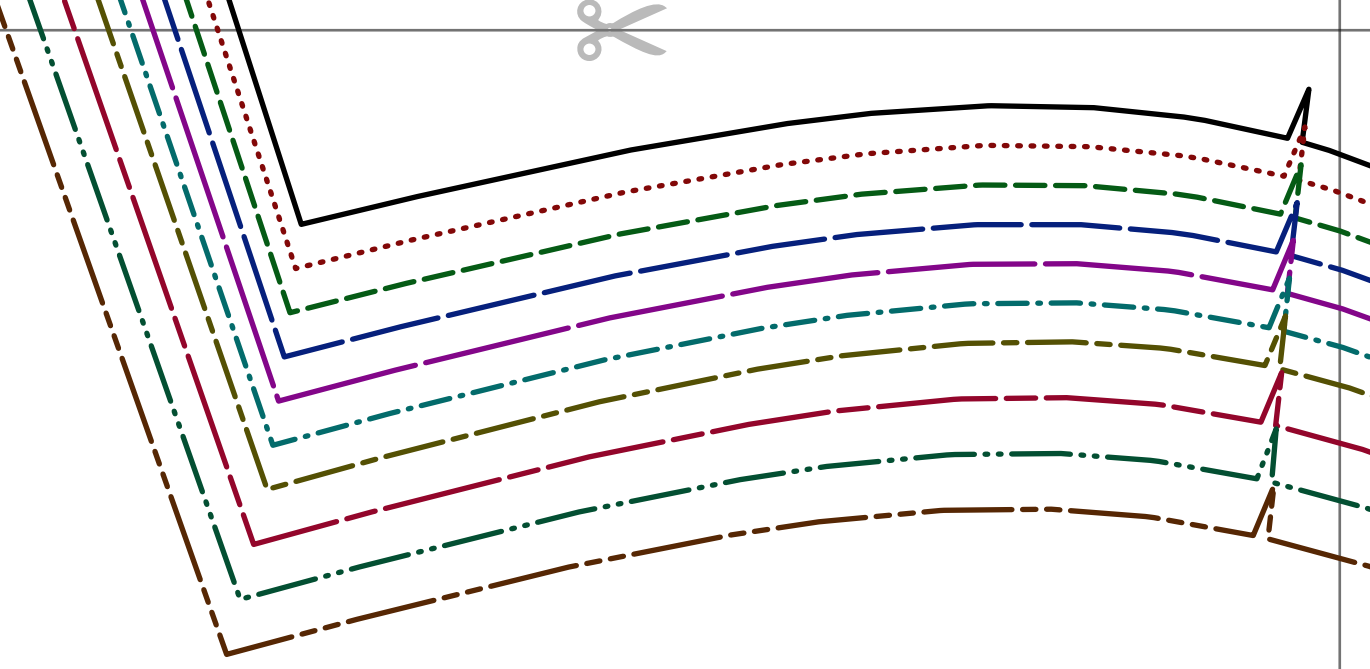


Page 2E

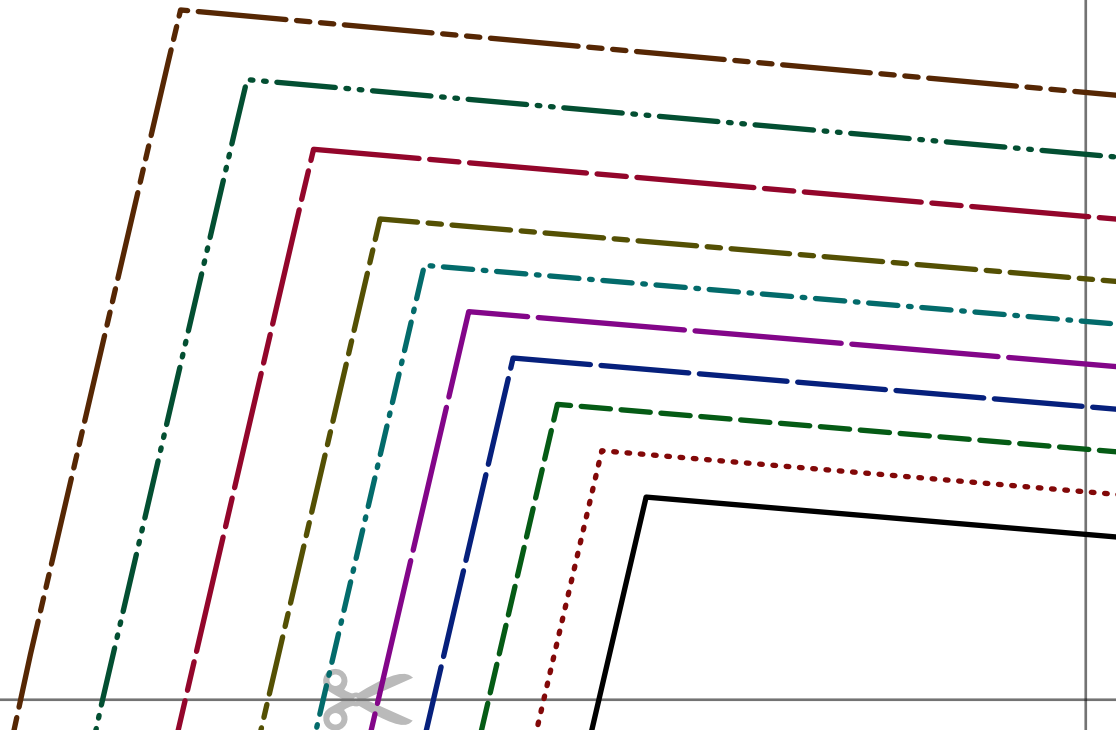


A vertical column of ten horizontal lines on the left side of the page, each with a different color and style:

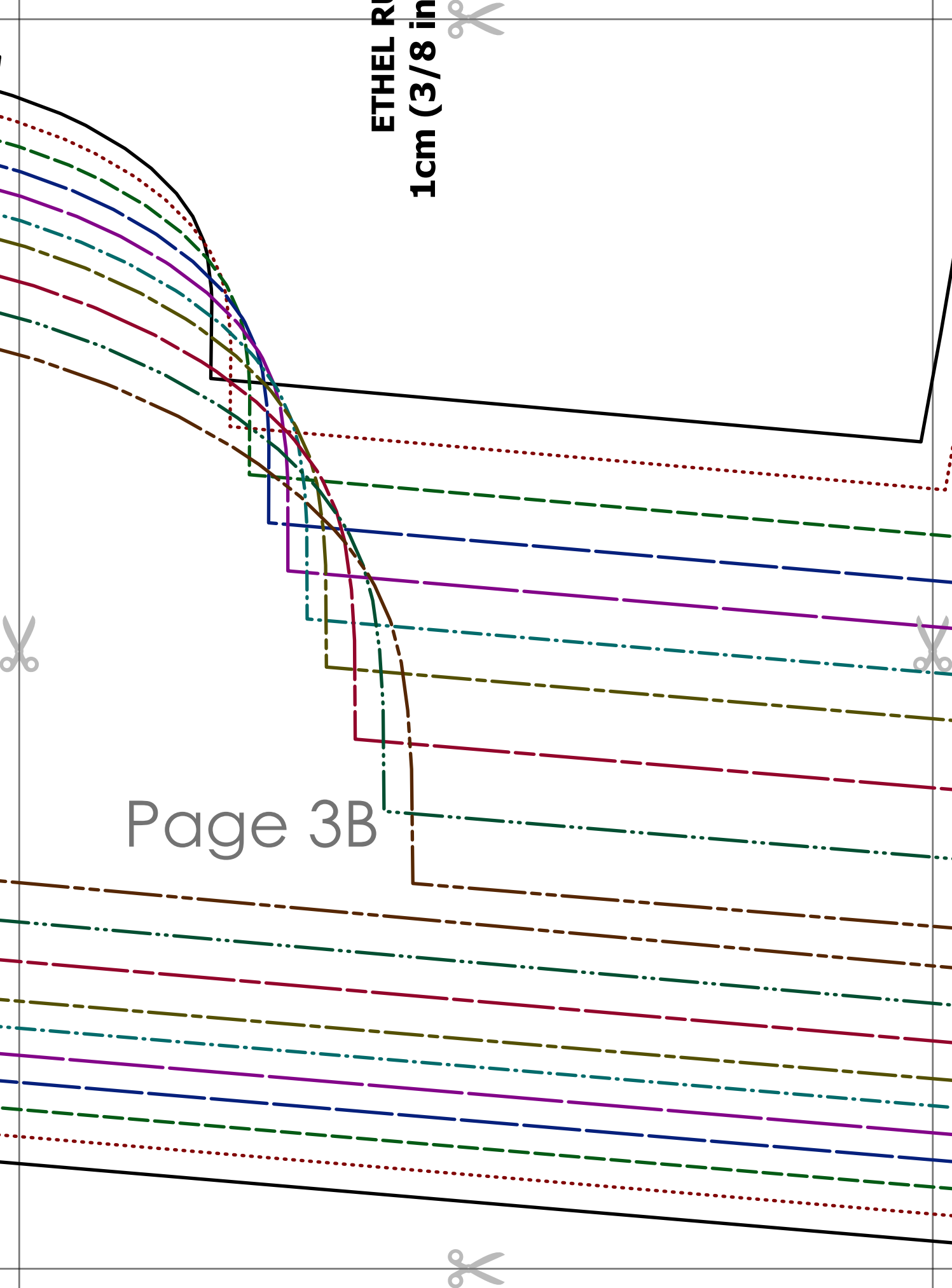
- 1. Solid black line
- 2. Dotted red line
- 3. Dashed green line
- 4. Dashed blue line
- 5. Dashed purple line
- 6. Dotted teal line
- 7. Dashed olive green line
- 8. Dashed maroon line
- 9. Dotted dark green line
- 10. Dashed brown line



Page 3A

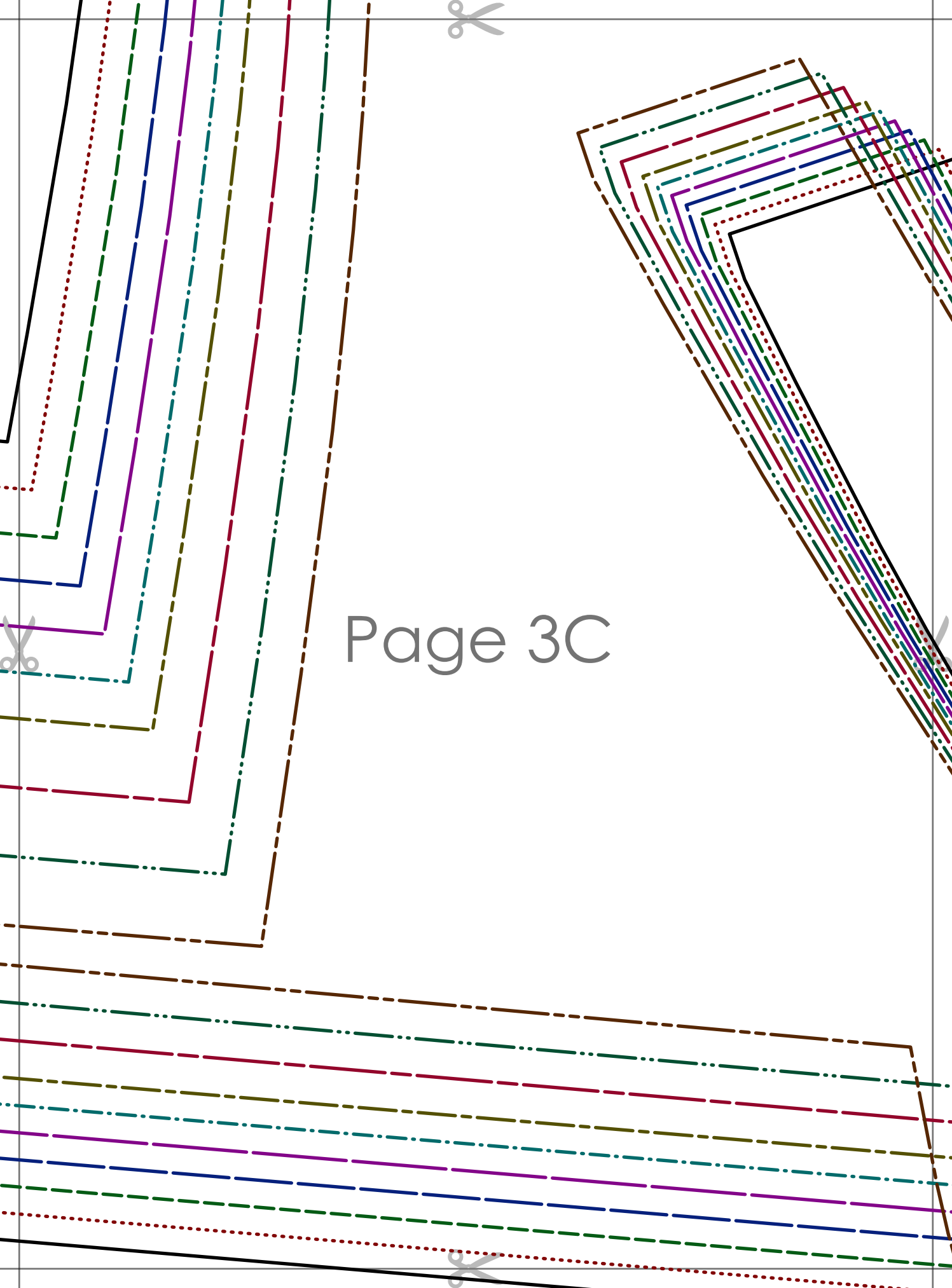


ETHEL R  
1cm (3/8 in)



Page 3B






Page 3C

Page 3D



**ETHEL RUFFLE TRIM PEPLUM TOP**  
1cm (3/8 in) seam allowance included  
  
**FRONT NECK FACING**  
cut 1 main fabric + 1 fusible interfacing







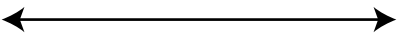
Page 3E



**ETHEL RUFFLE TRIM PEPLUM TOP**  
**1cm (3/8 in) seam allowance included**

**~~STRIPES~~**

**RUFFLE TRIM**  
**cut 2**



Page 4A





Page 4B





**ETHEL RUFFLE TRIM PEPLUM TOP**  
**1cm (3/8 in) seam allowance included**

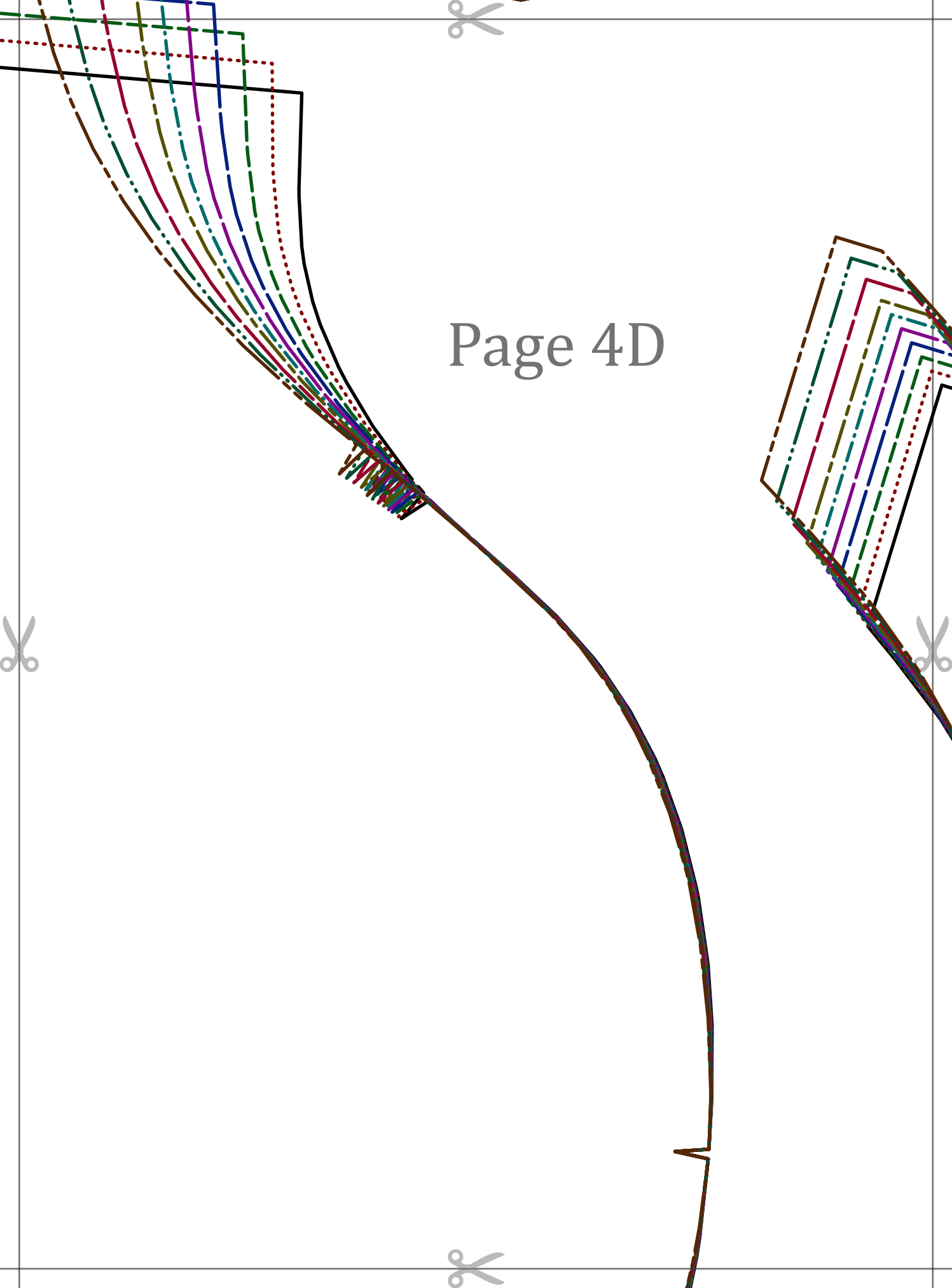
**~~SEWING PATTERNS~~**

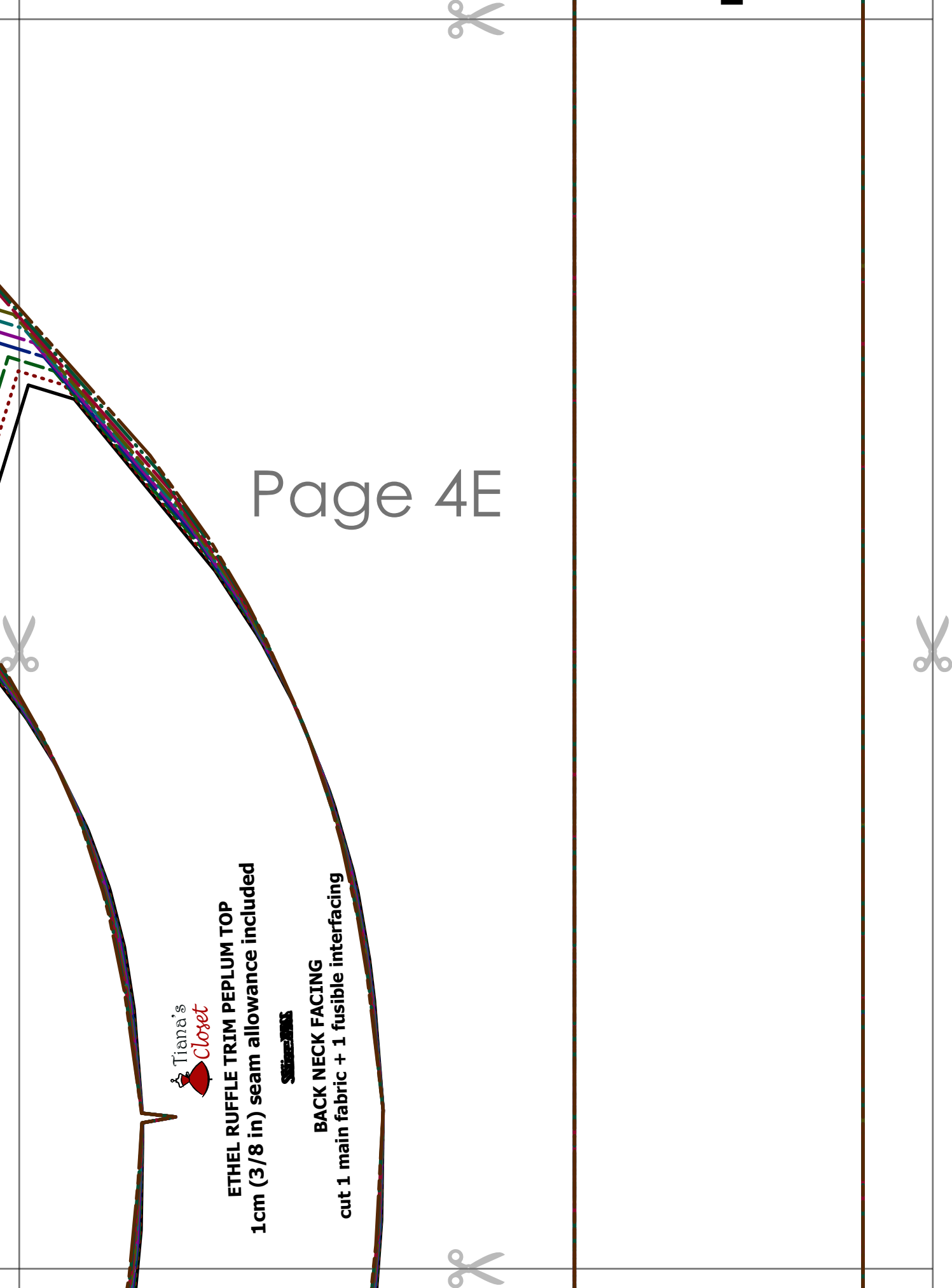
**SLEEVE**

**cut 2 mirrored**

Page 4C

Page 4D





Page 4E



**ETHEL RUFFLE TRIM PEPLUM TOP**  
1cm (3/8 in) seam allowance included

**SKIRT**

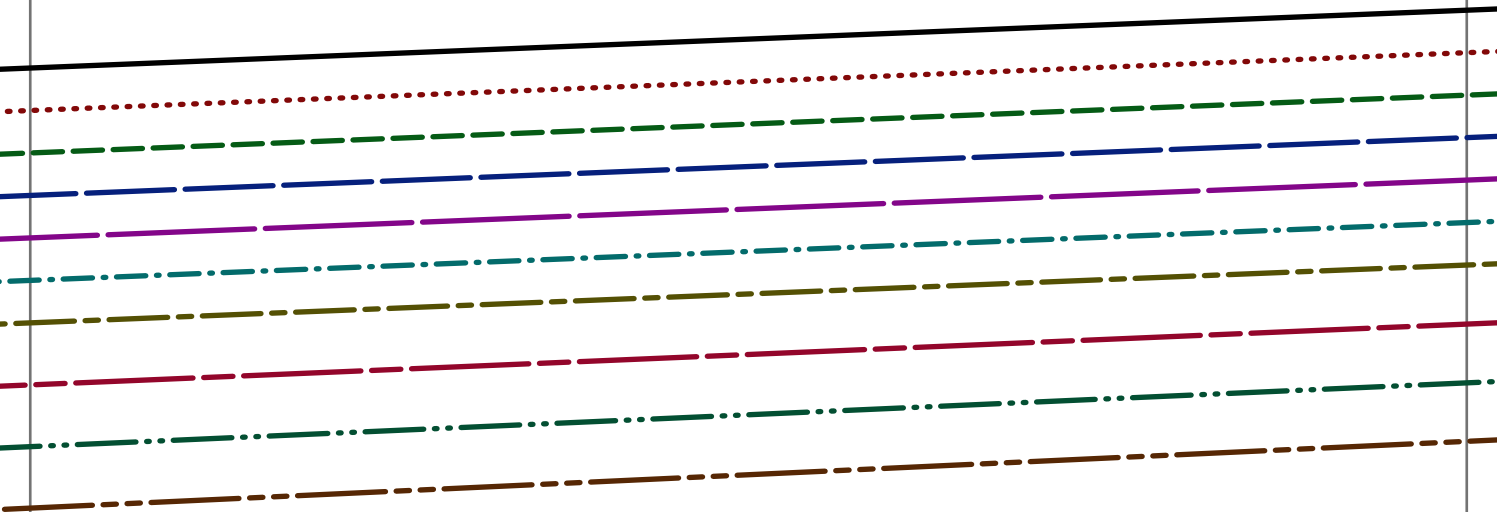
**BACK NECK FACING**  
cut 1 main fabric + 1 fusible interfacing

Page 5A





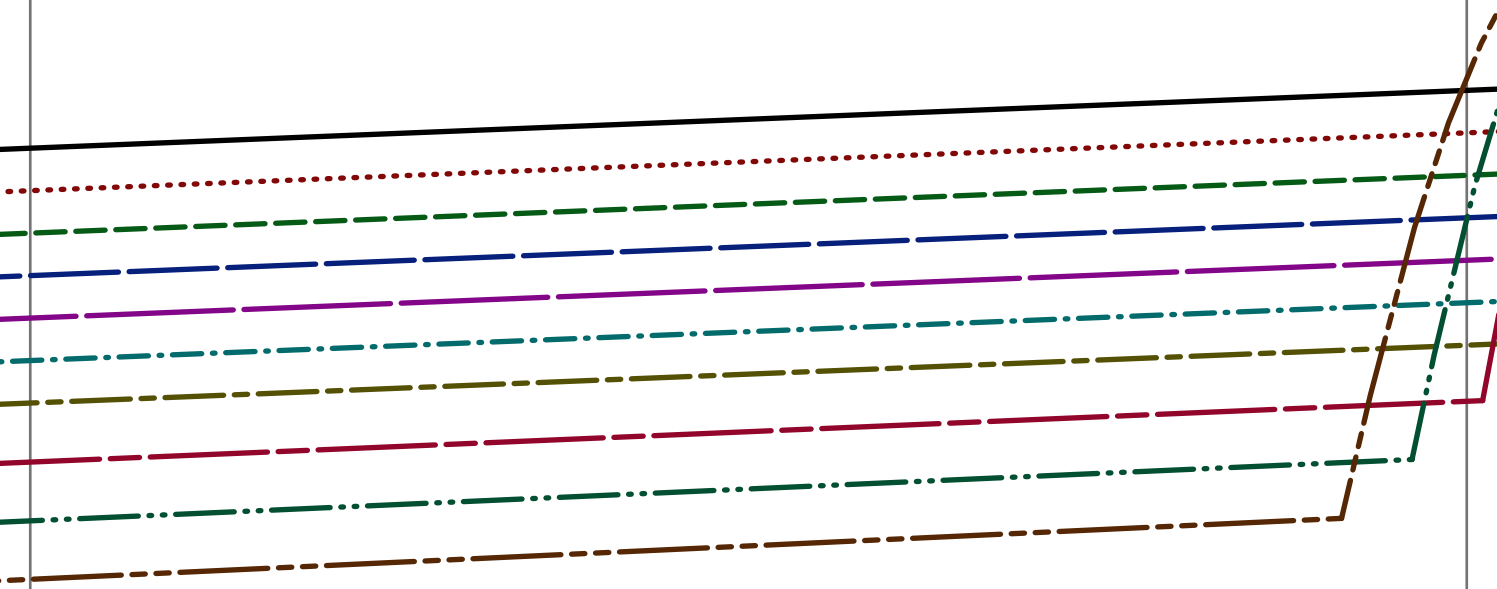
Page 5B

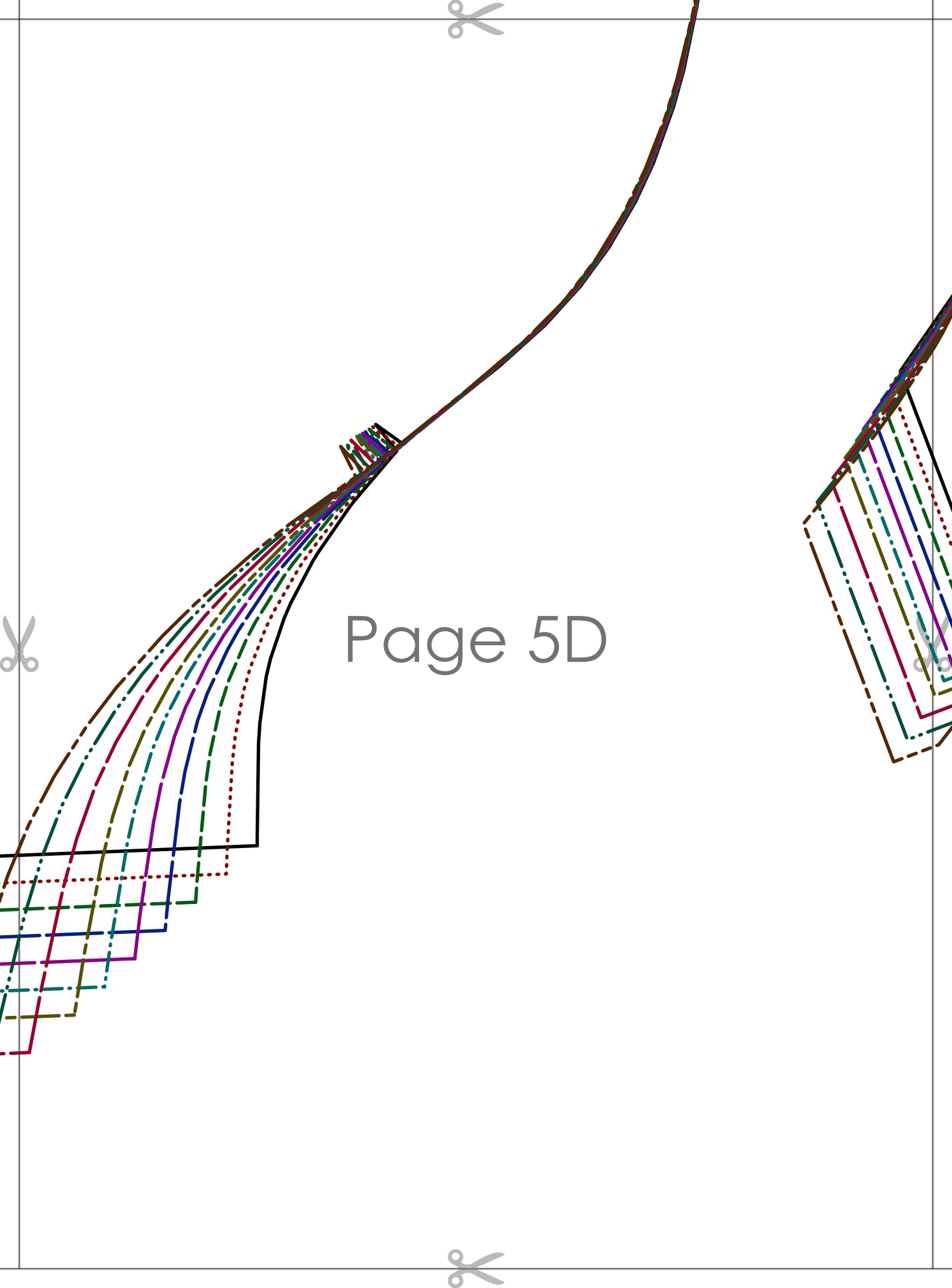






Page 5C





Page 5D

