

PRINTING INSTRUCTIONS

- Tiana's Closet sewing patterns are made in Layered PDF format, which means all sizes are saved in one file and can be shown or hidden. It is recommended to use Adobe Acrobat Reader (paid version on Mac OS, free on Windows) or Foxit PDF Reader (free, works on Windows only) to read the file correctly. In order to choose the desired size(s), go to Layers tab of your PDF reader, uncheck all boxes except for the desired size(s) and the box Print for all sizes.

- When printing the pattern, go to Print settings, in the tab Scale choose Custom scale: 100% (or Scaling: None or Actual Size) to print true to size. Note: some computers print smaller than true size even when you choose 100% scale, so you will have to adjust the scale to a little larger than 100% and measure the test square until you get the true size using the test rulers

- Always print the first page of the file and measure to avoid waste of paper.

- After printing the pattern, cut the pages along the lines with scissors icon, align and tape the pages according to their sequences. For example, pages 1A, 1B, 1C, 1D... are lined up in one row from left to right, pages 1A, 2A, 3A, 3B... are lined up in one column from up to down.

- You can find photo instruction for printing sewing patterns on Tiana's Closet website:

<https://tianasclot.com/index.php/how-to-print-tianas-closet-patterns/>

SIZE TABLE

WOMEN'S CLOTHING SIZE

- Sizing is based on body measurements.

- If between sizes, size up for woven fabric, size down for knit fabric.

Unit: centimeter

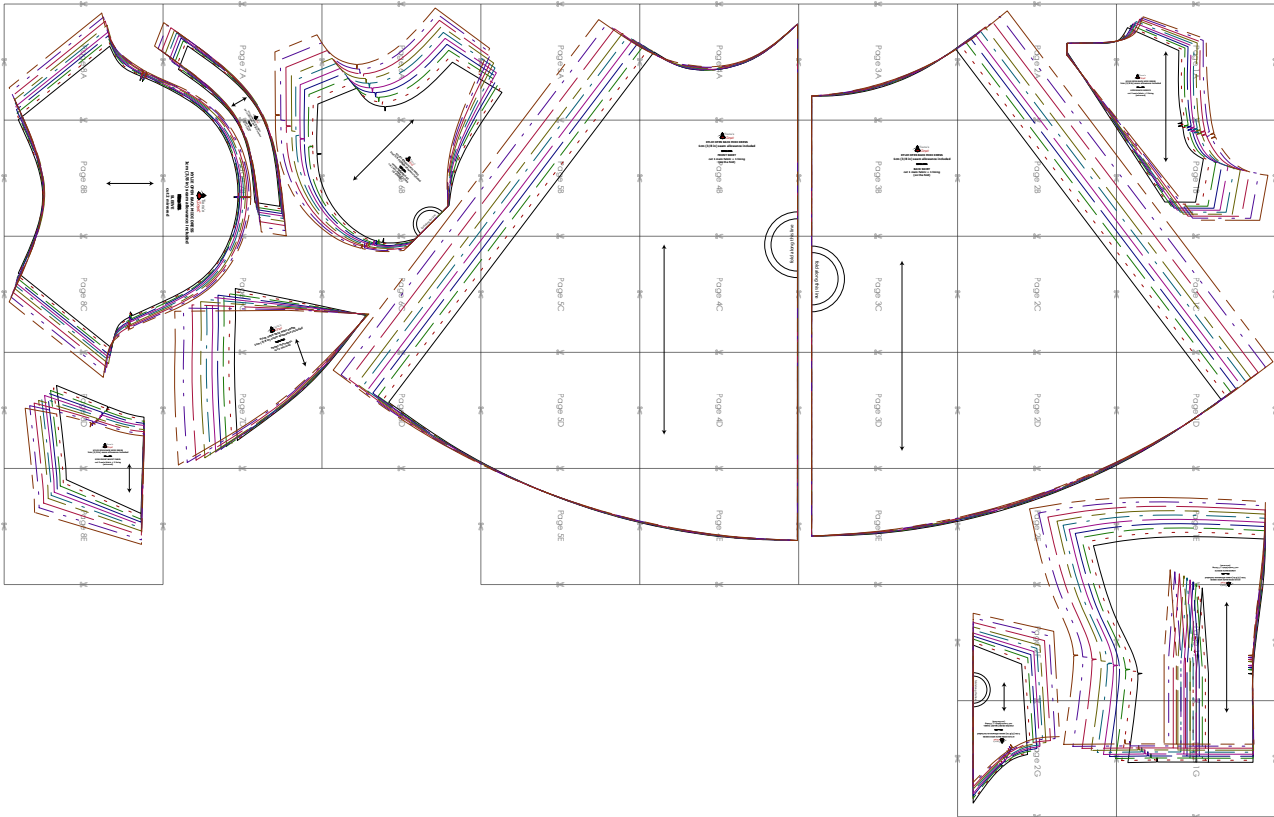
Size	XXS	XS	S	M	L	XL	XXL	3XL	4XL	5XL
Bust	80	84	88	92	96	100	104	110	116	122
Waist	60	64	68	72	76	80	84	90	96	102
Hip	88	92	96	100	104	108	112	118	124	130
Cross shoulder	35	36	37	38	39	40	41	42.5	44	45.5

Unit: inch











Size	XXS	XS	S	M	L	XL	XXL	3XL	4XL	5XL
Bust	31.5	33.1	34.6	36.2	37.8	39.4	40.9	43.3	45.7	48.0
Waist	23.6	25.2	26.8	28.3	29.9	31.5	33.1	35.4	37.8	40.2
Hip	34.6	36.2	37.8	39.4	40.9	42.5	44.1	46.5	48.8	51.2
Cross shoulder	13.8	14.2	14.6	15.0	15.4	15.7	16.1	16.7	17.3	17.9

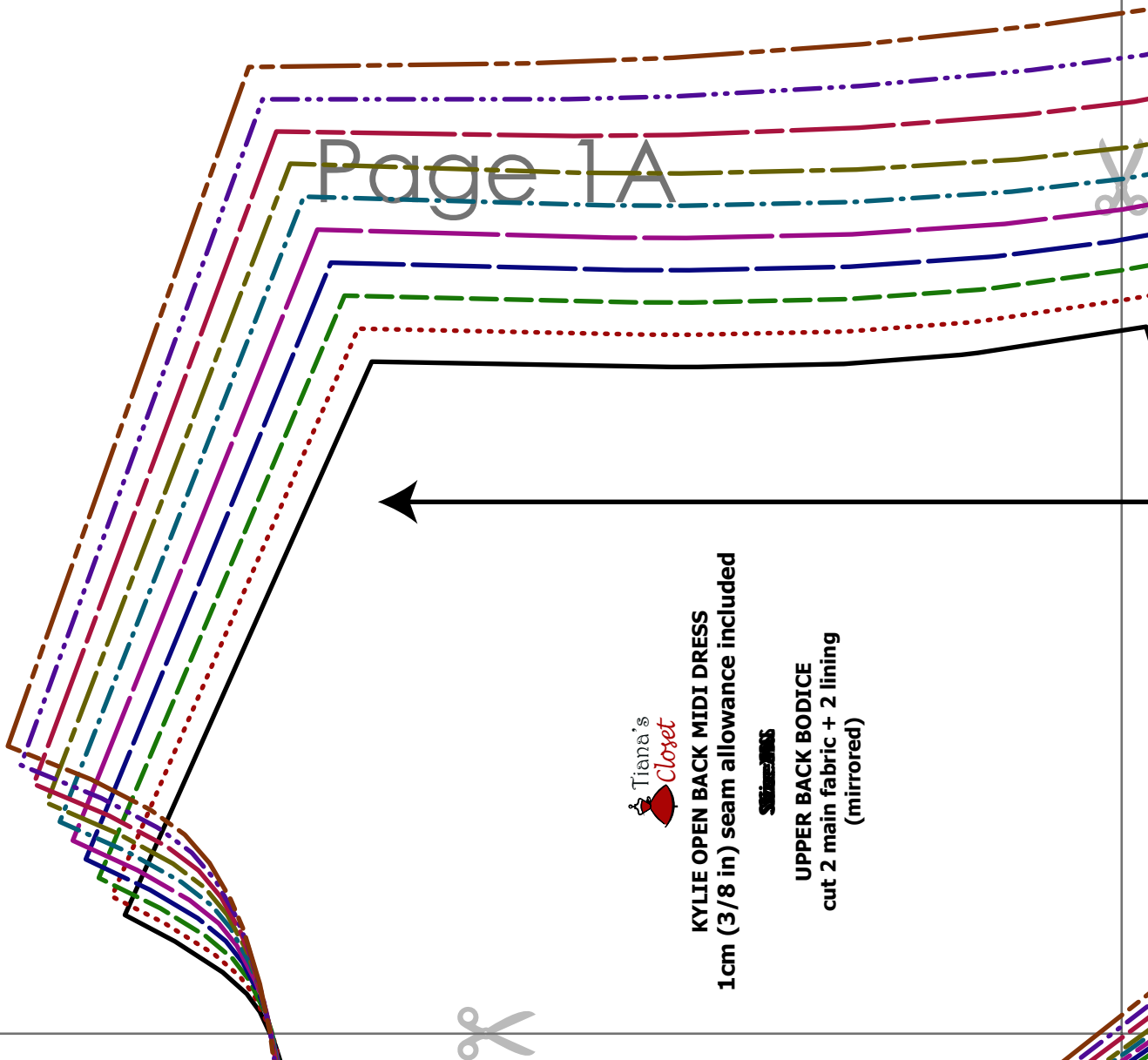
For more ideas and free sewing patterns, visit <http://tianasclot.com>

PATTERN LAYOUT



LEGEND

- SIZE XXS 
- SIZE XS 
- SIZE S 
- SIZE M 
- SIZE L 
- SIZE XL 
- SIZE XXL 
- SIZE 3XL 
- SIZE 4XL 
- SIZE 5XL 



Page 1A



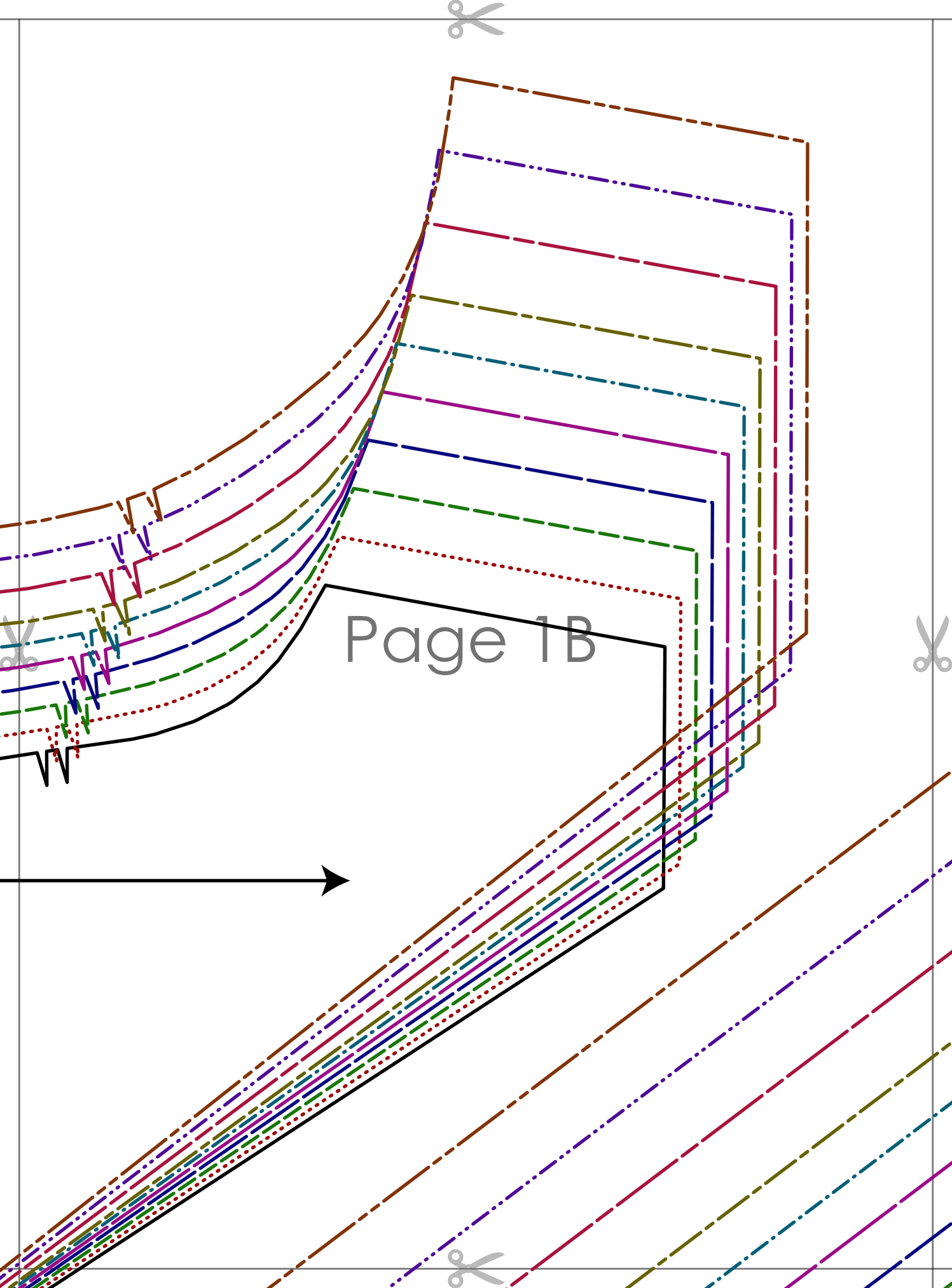
Tiana's
Closet

KYLIE OPEN BACK MIDI DRESS
1cm (3/8 in) seam allowance included

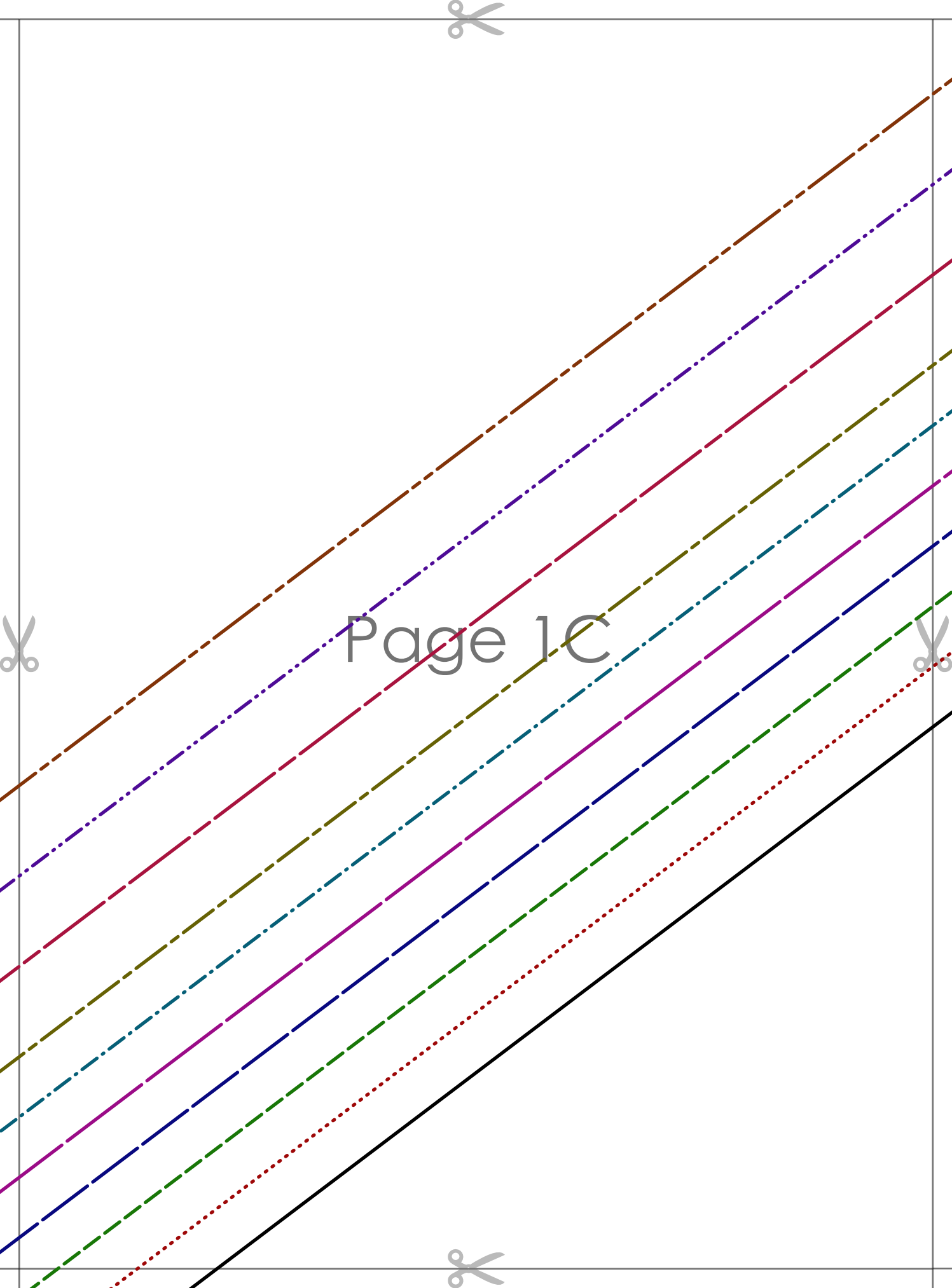


Sew Me 2 Days

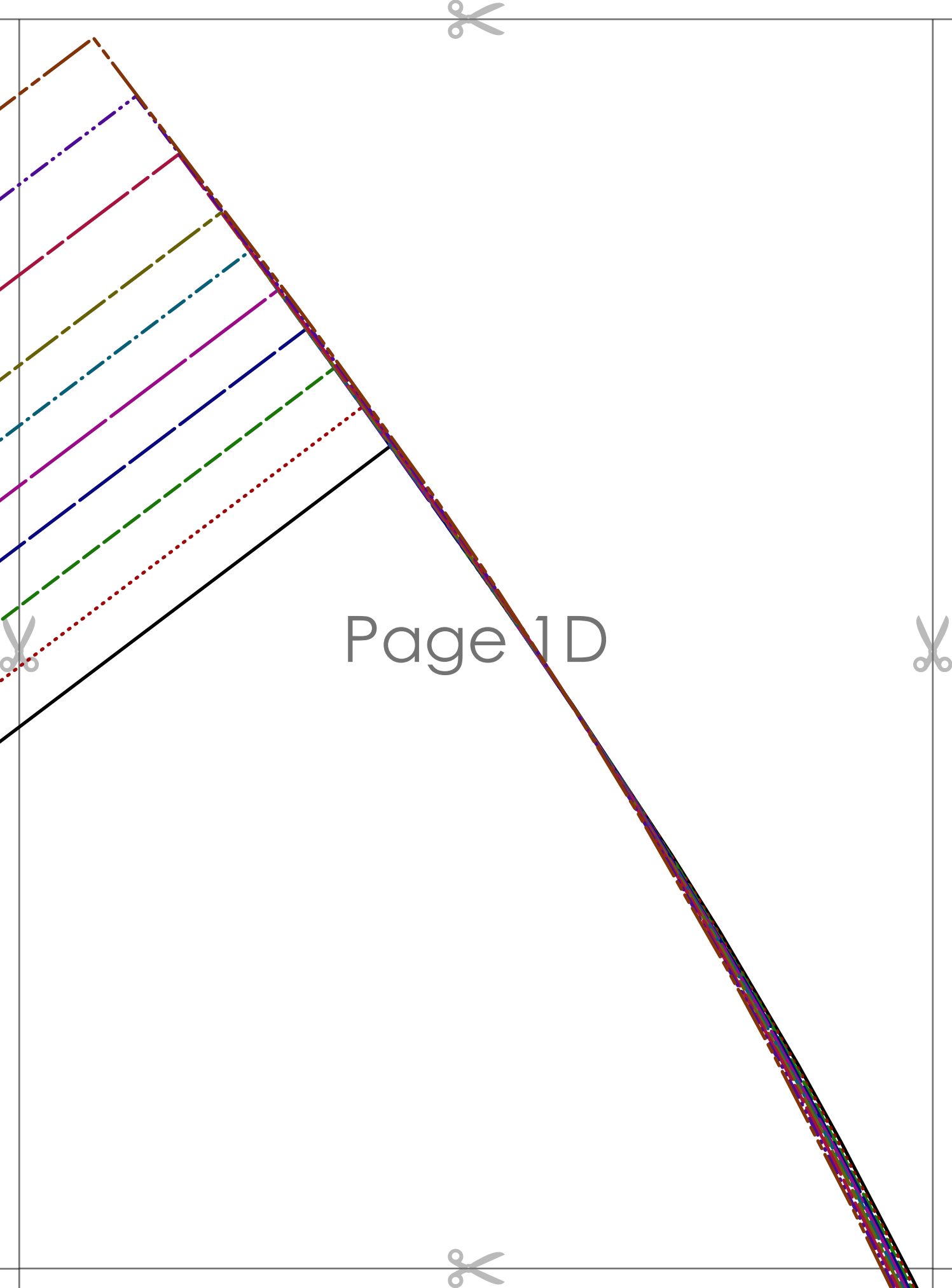
UPPER BACK BODICE
cut 2 main fabric + 2 lining
(mirrored)



Page 1B



Page 1C



Page 1D

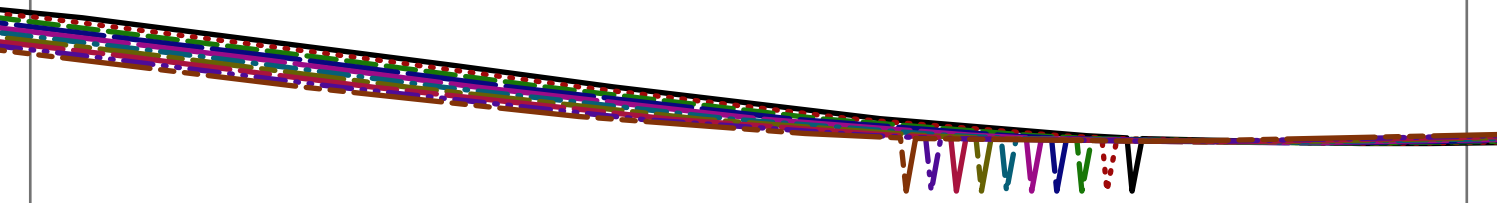
KYLIE OPEN BACK MIDI DRESS
1cm (3/8 in) seam allowance included

LOWER BACK BODICE
cut 2 main fabric + 2 lining
(mirrored)

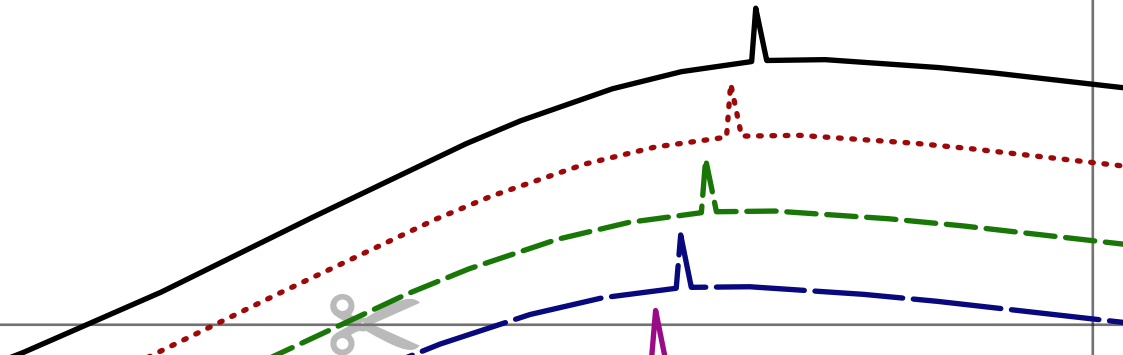
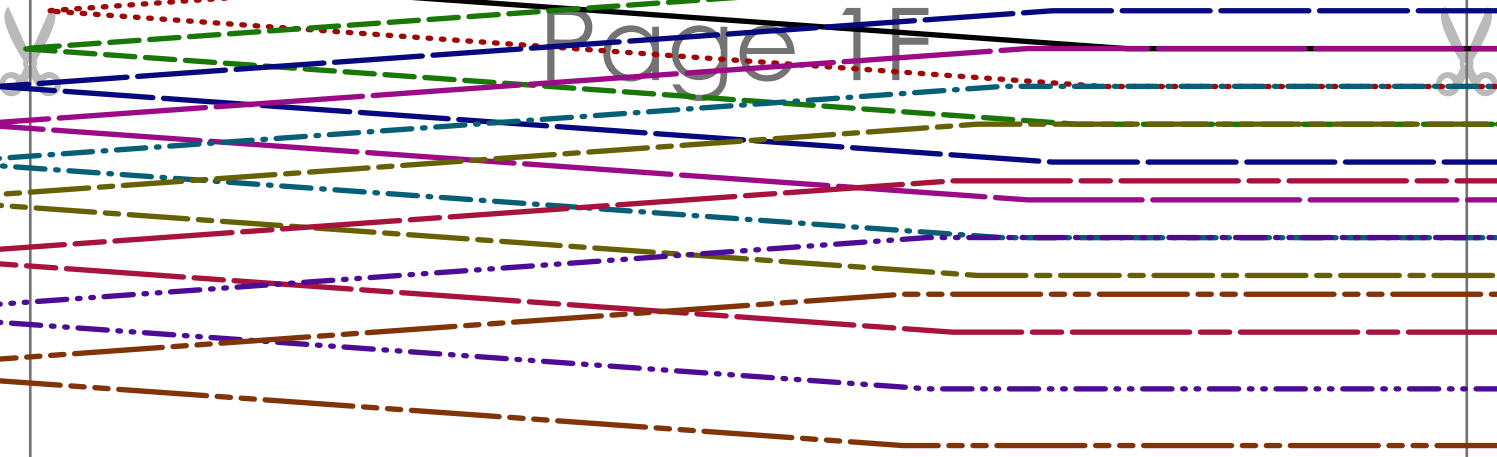


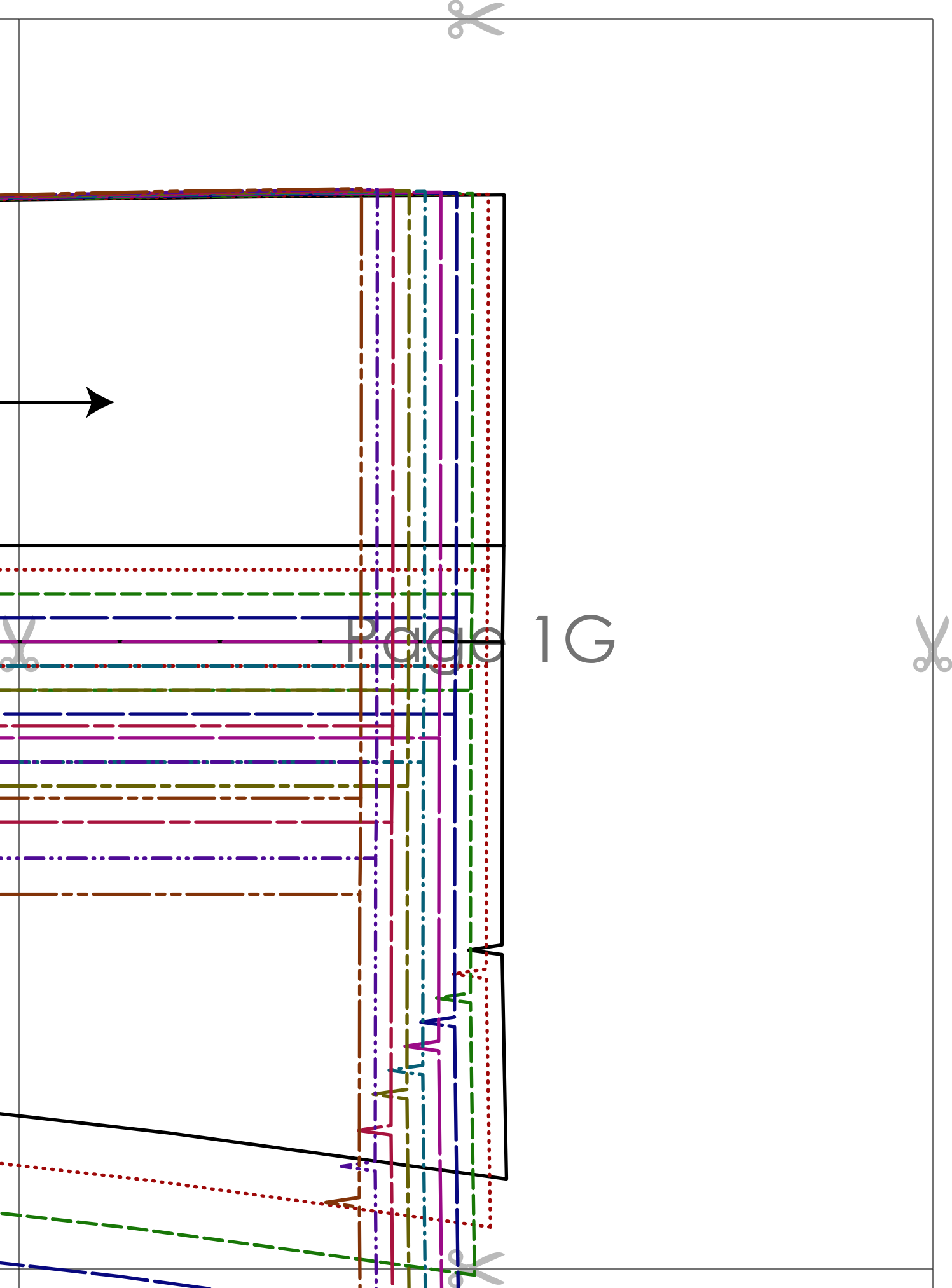
Page 1 of 3

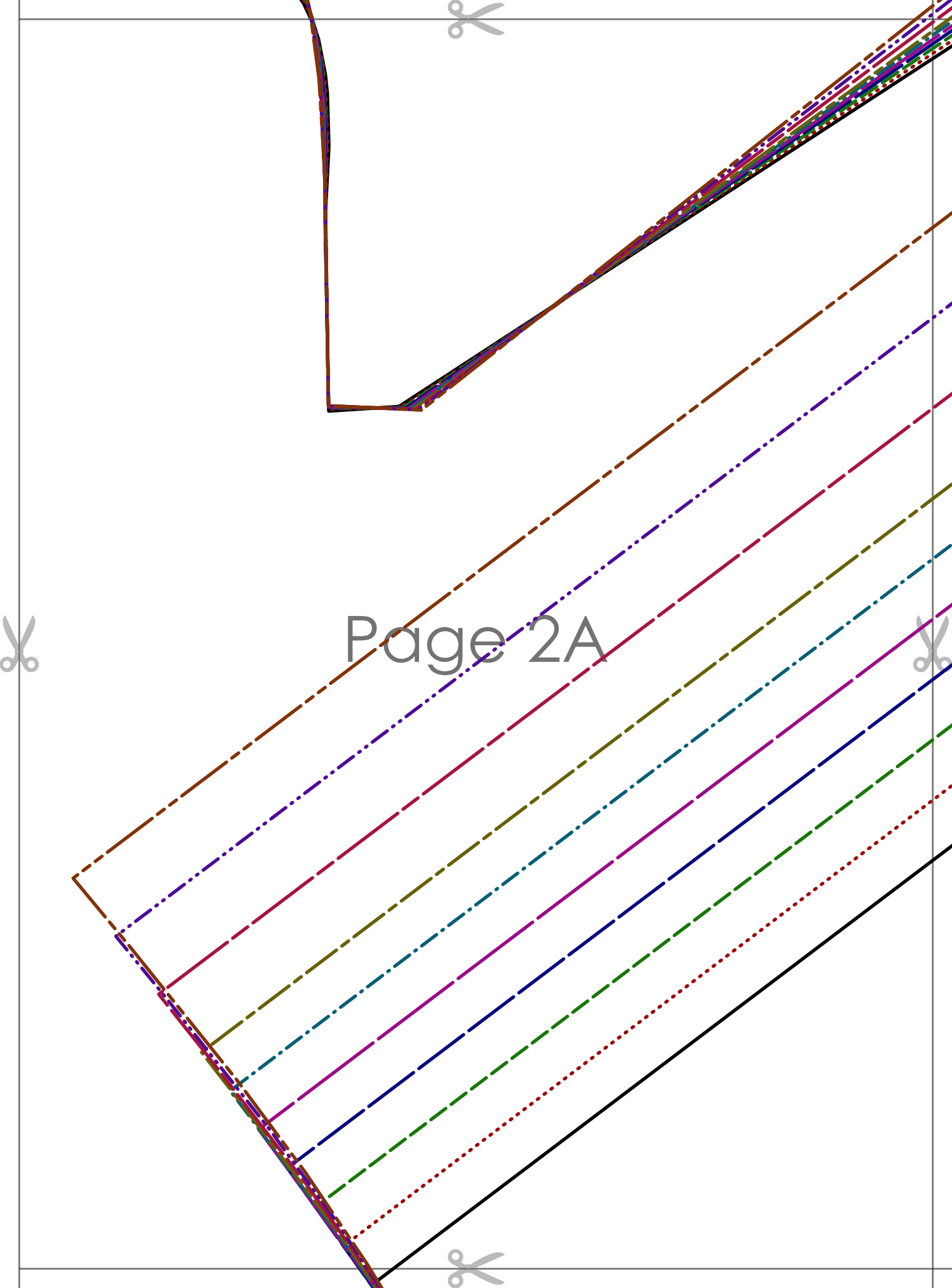




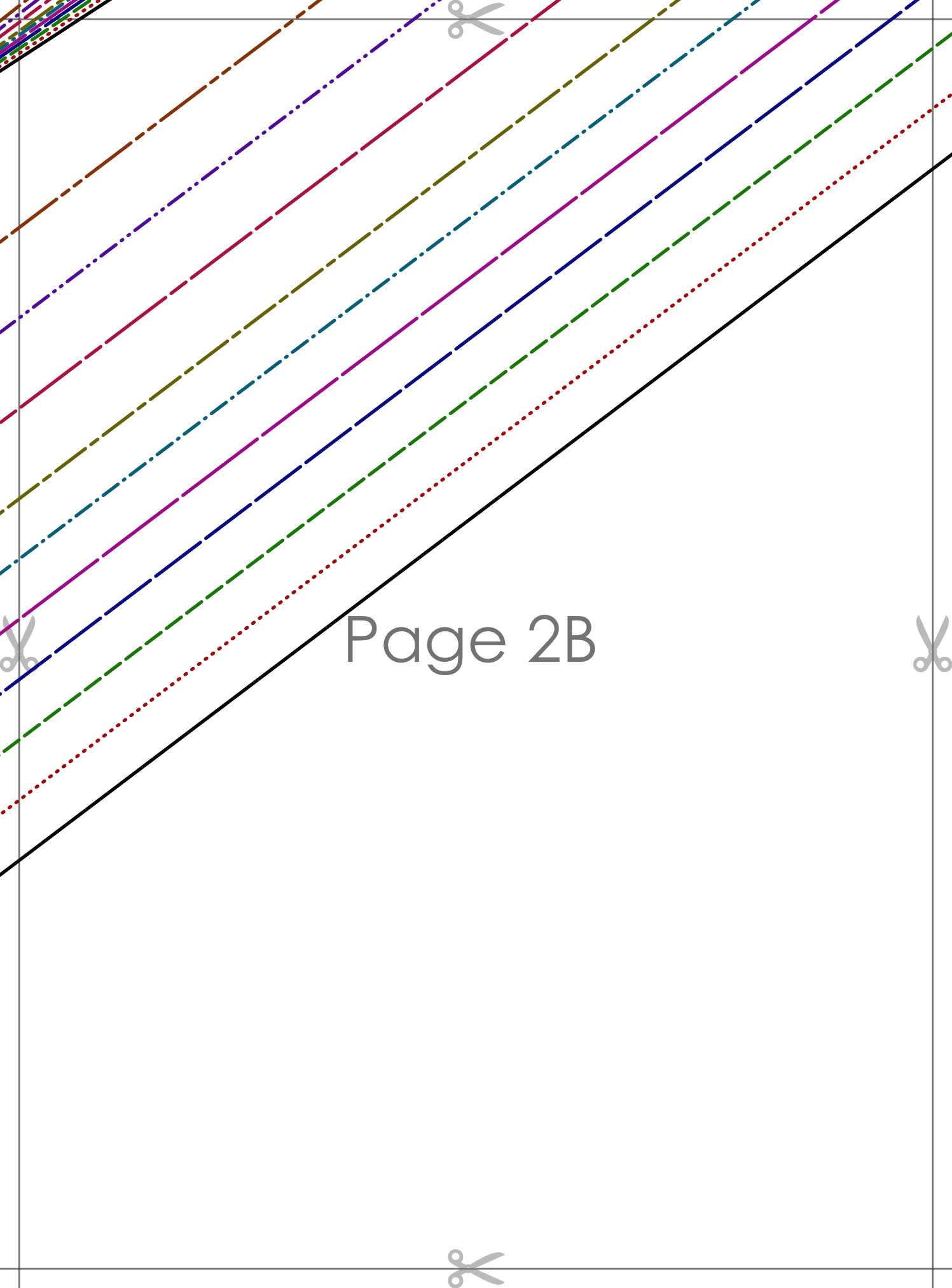
Page 1F



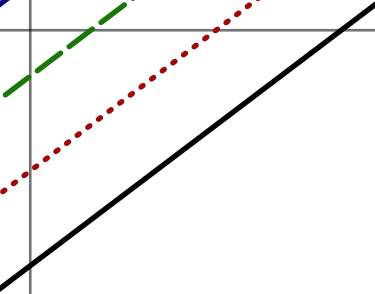




Page 2A



Page 2B



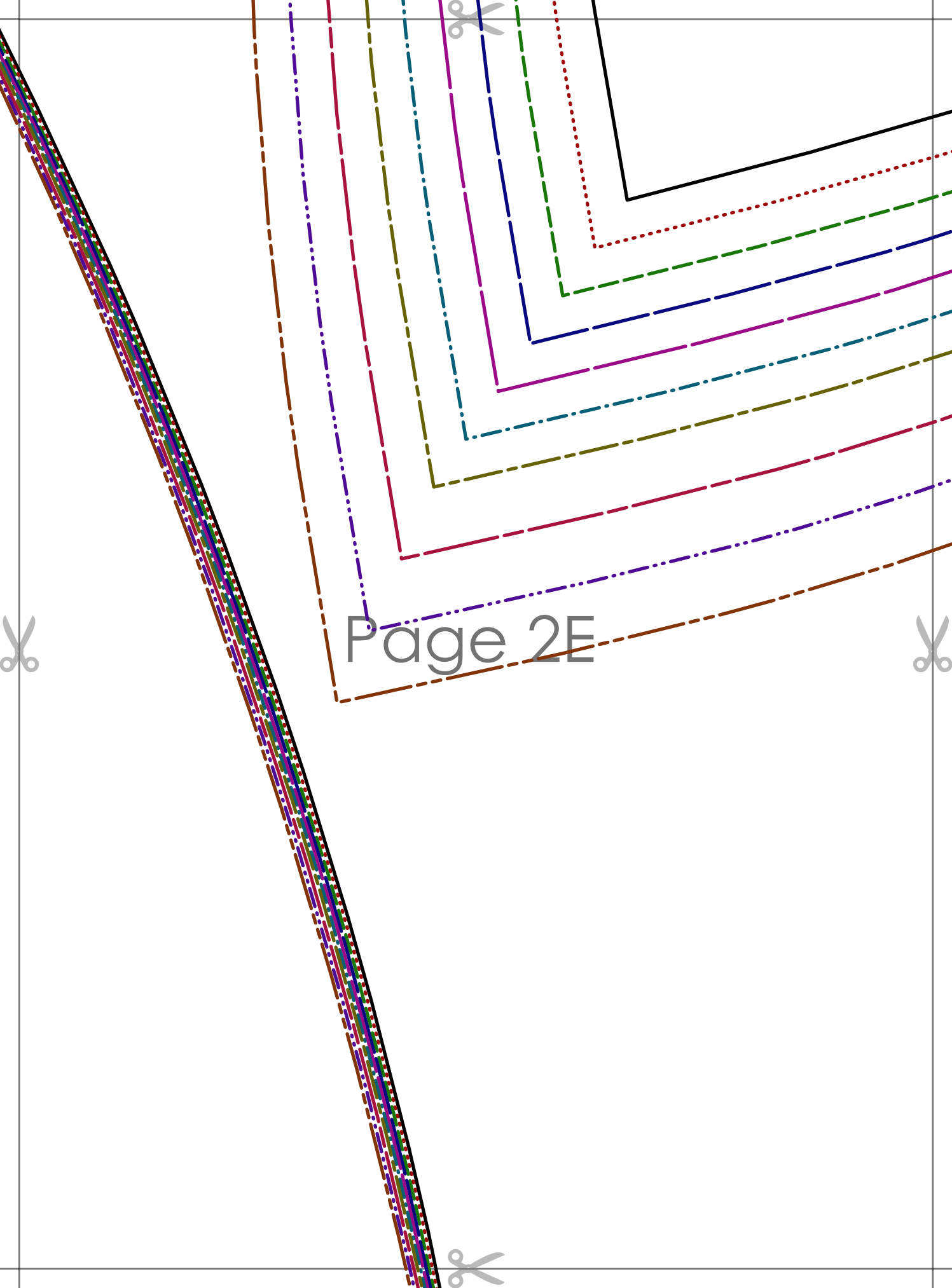
Page 2C



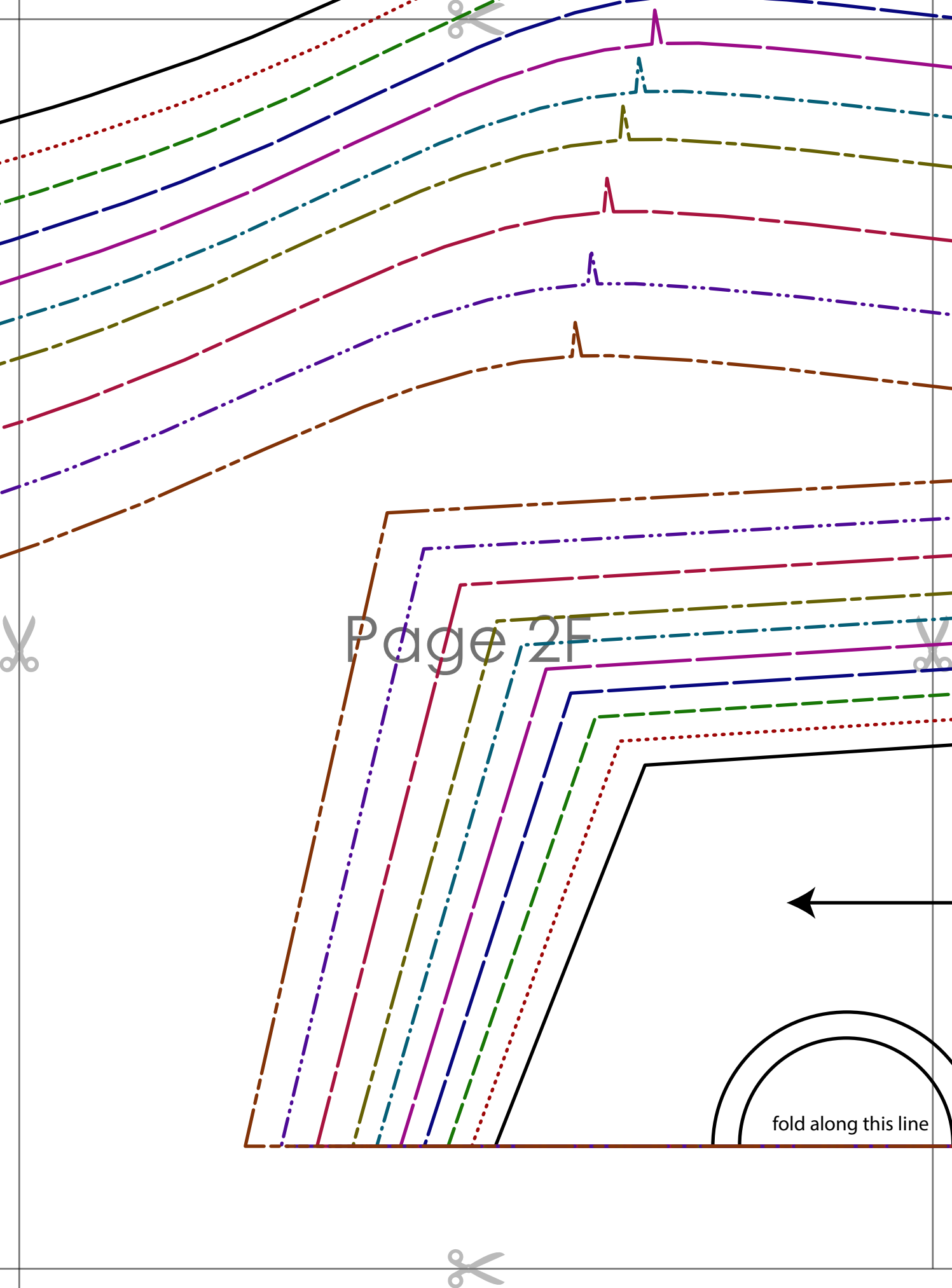


Page 2D



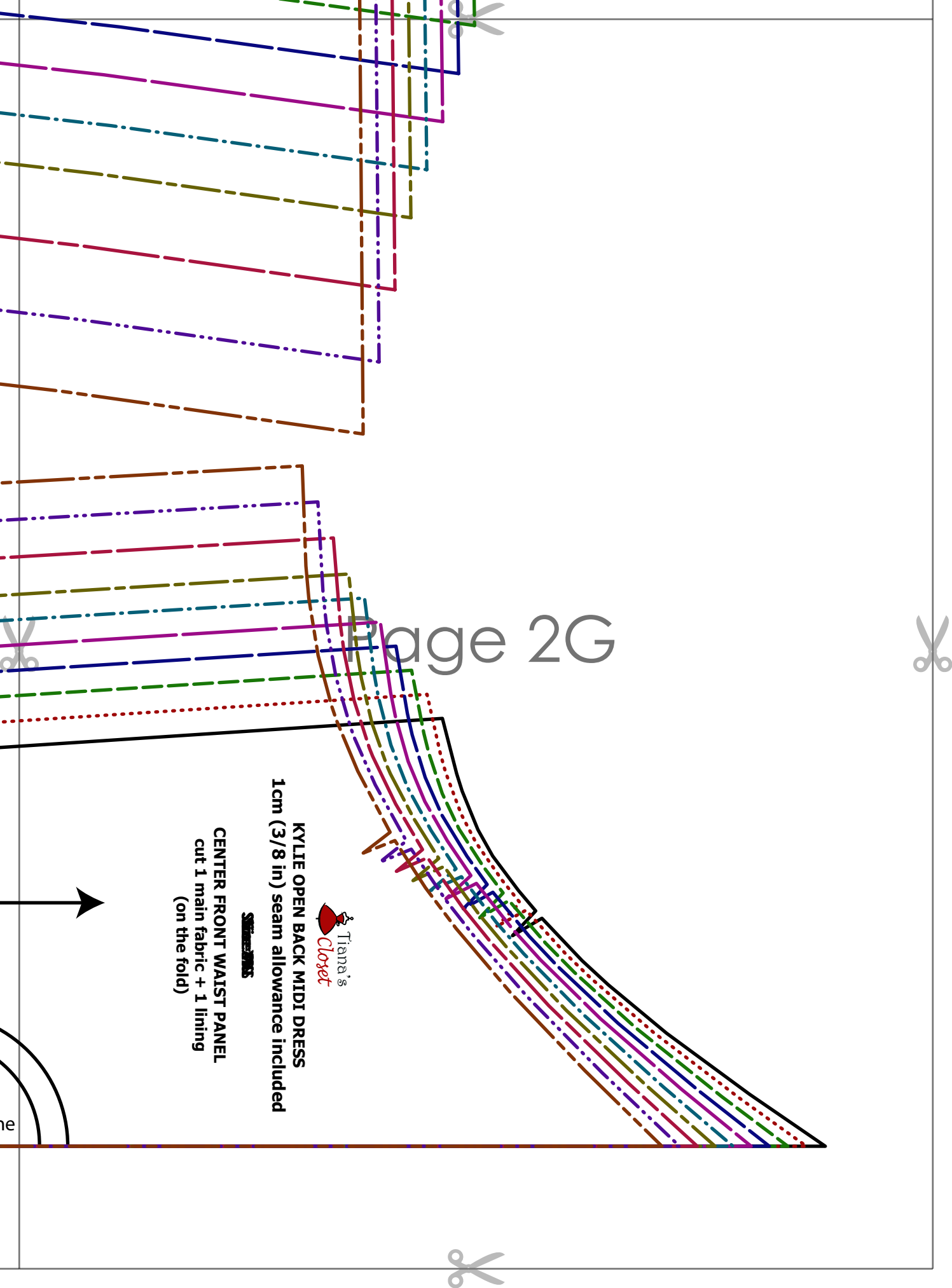


Page 2E



Page 2F

fold along this line



Page 2G



KYLIE OPEN BACK MIDI DRESS
1cm (3/8 in) seam allowance included

CENTER FRONT WAIST PANEL
cut 1 main fabric + 1 lining
(on the fold)



ne

Page 3A



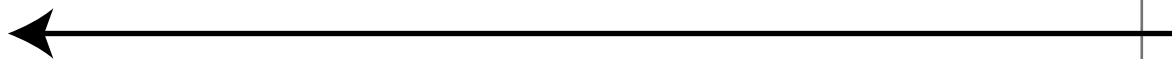


KYLIE OPEN BACK MIDI DRESS
1cm (3/8 in) seam allowance included

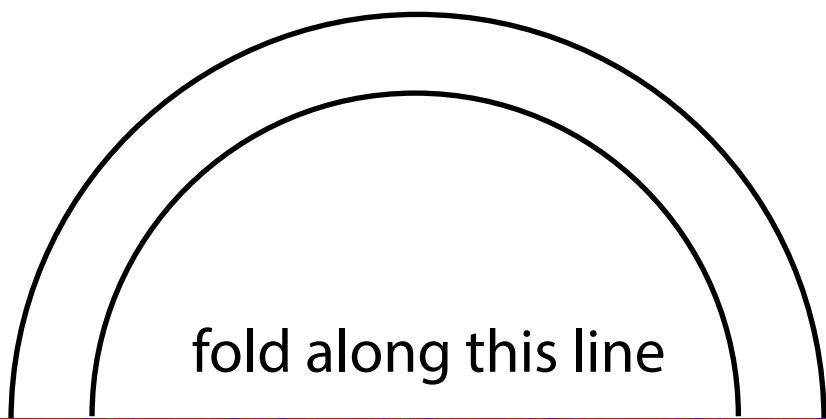
SKIRT

BACK SKIRT
cut 1 main fabric + 1 lining
(on the fold)

Page 3B

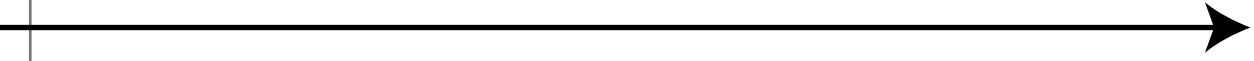


Page 3C



fold along this line





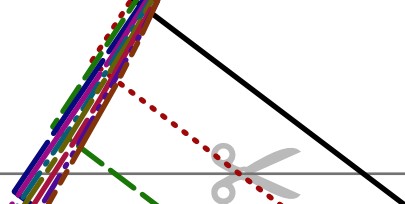
Page 3D



Page 3E



Page 4A





KYLIE OPEN BACK MIDI DRESS
1cm (3/8 in) seam allowance included

~~SKIRT~~

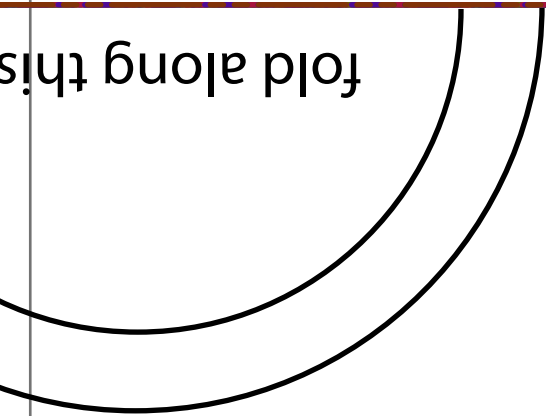
FRONT SKIRT

cut 1 main fabric + 1 lining
(on the fold)

Page 4B

this line

fold along this



Page 4C





Page 4D



Page 4E



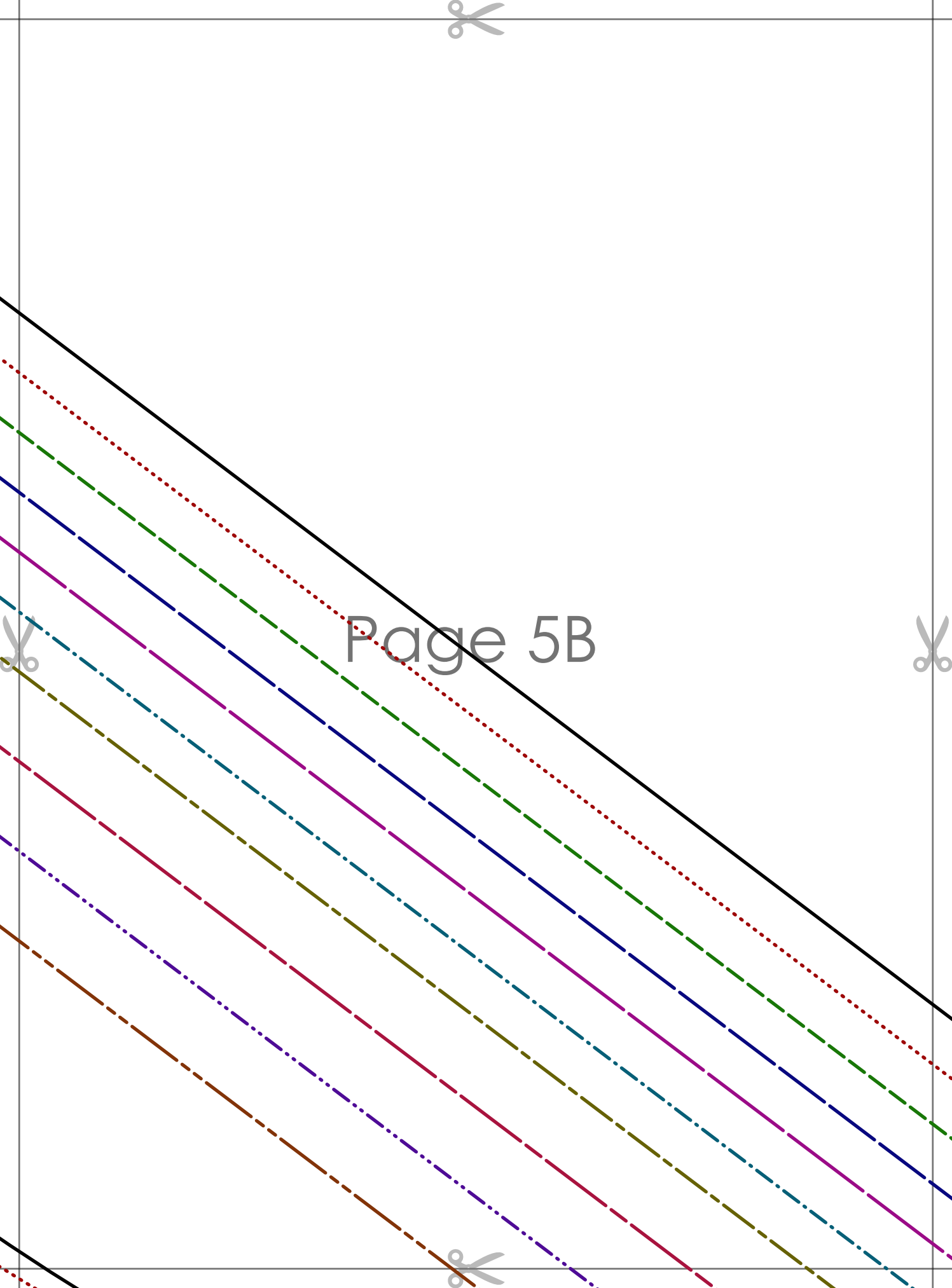


Page 5A



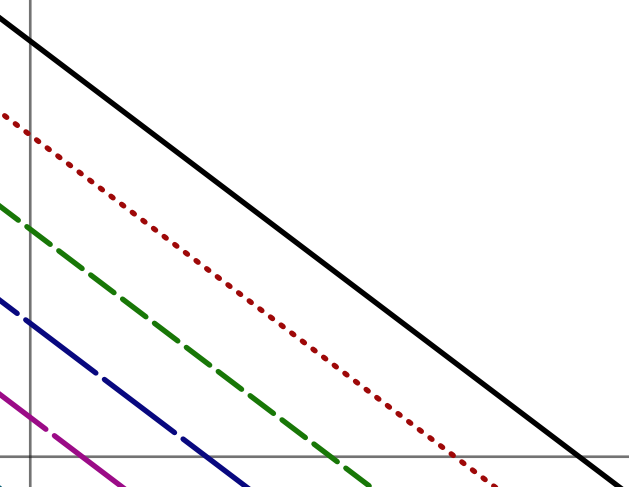


Page 5B



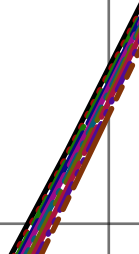


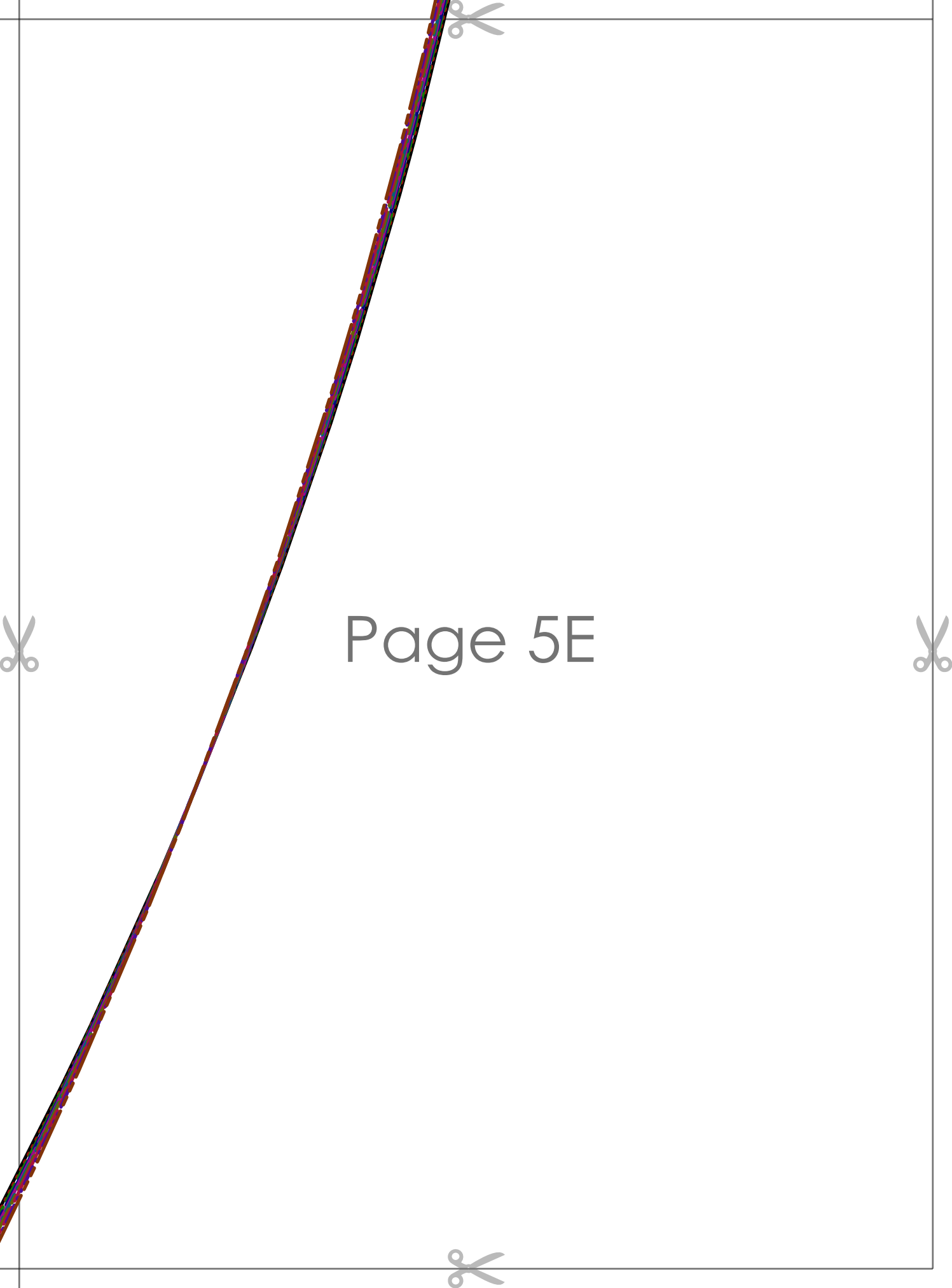
Page 5C





Page 5D





Page 5E

Page 6A

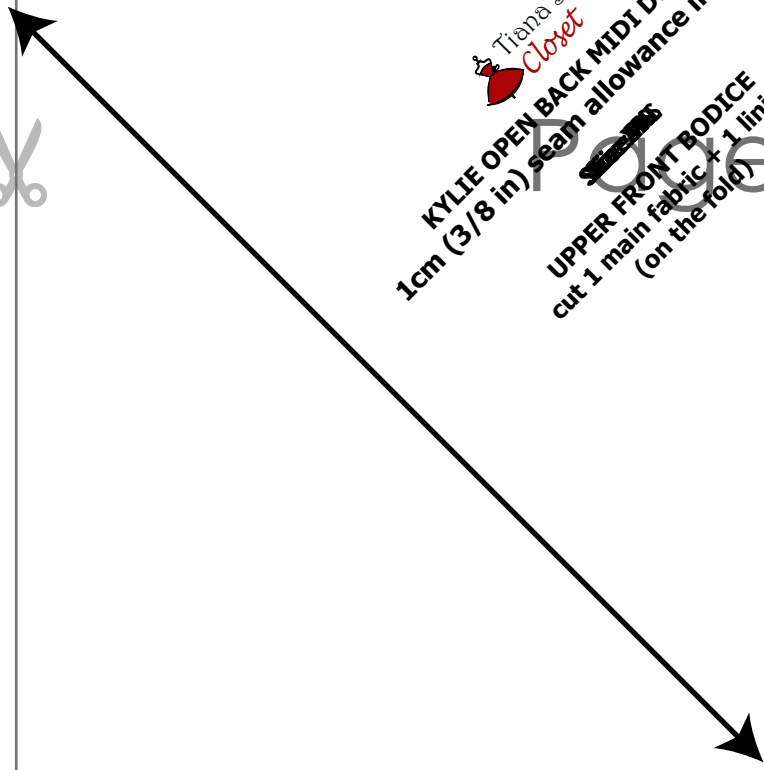
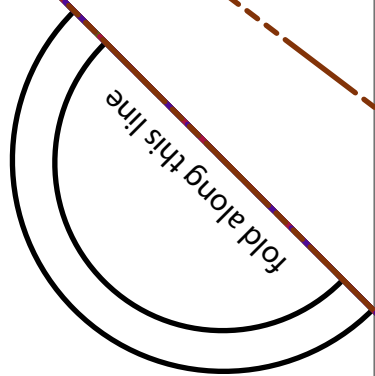


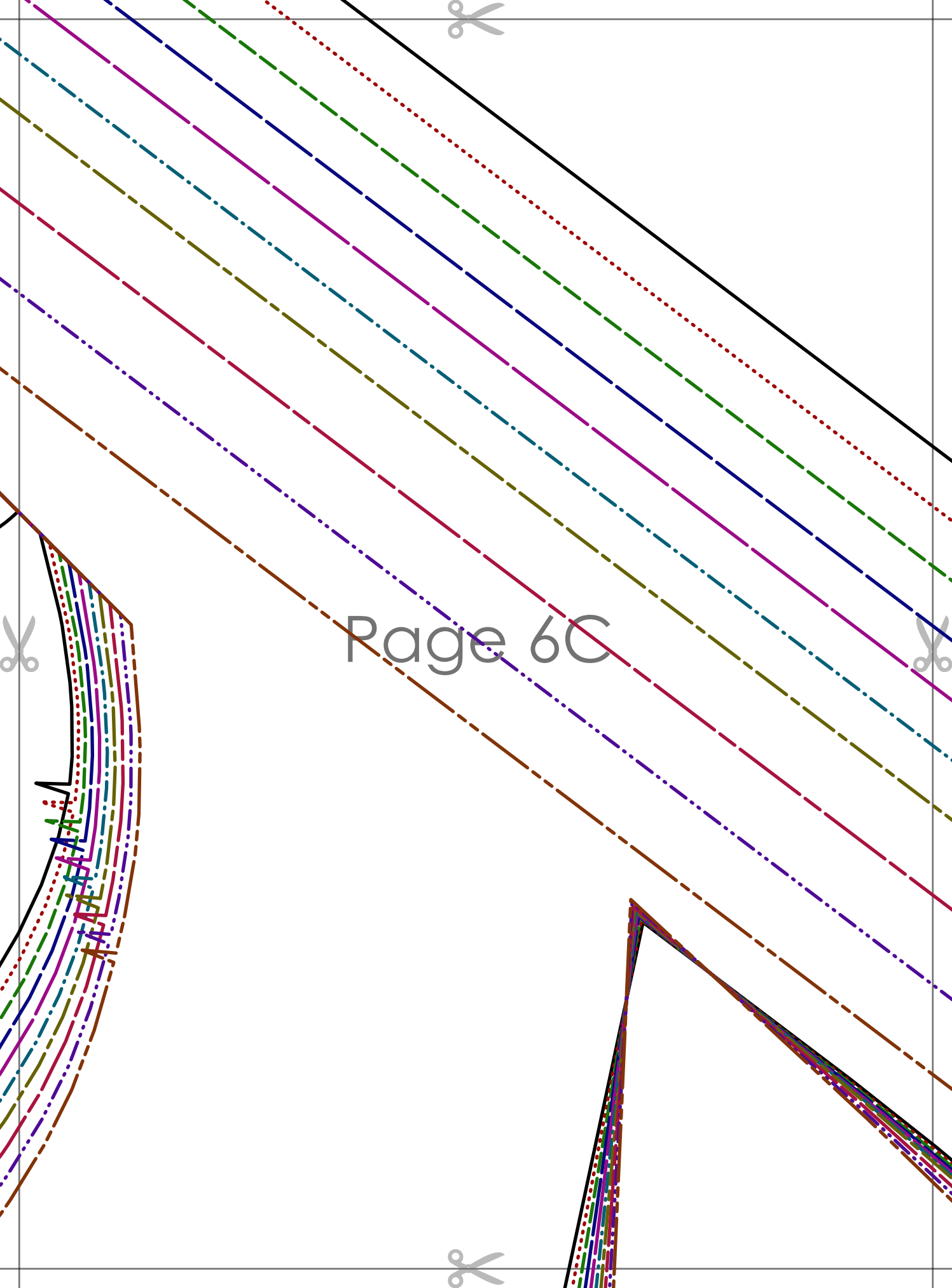


KYLIE OPEN BACK MIDI DRESS
1cm (3/8 in) seam allowance included

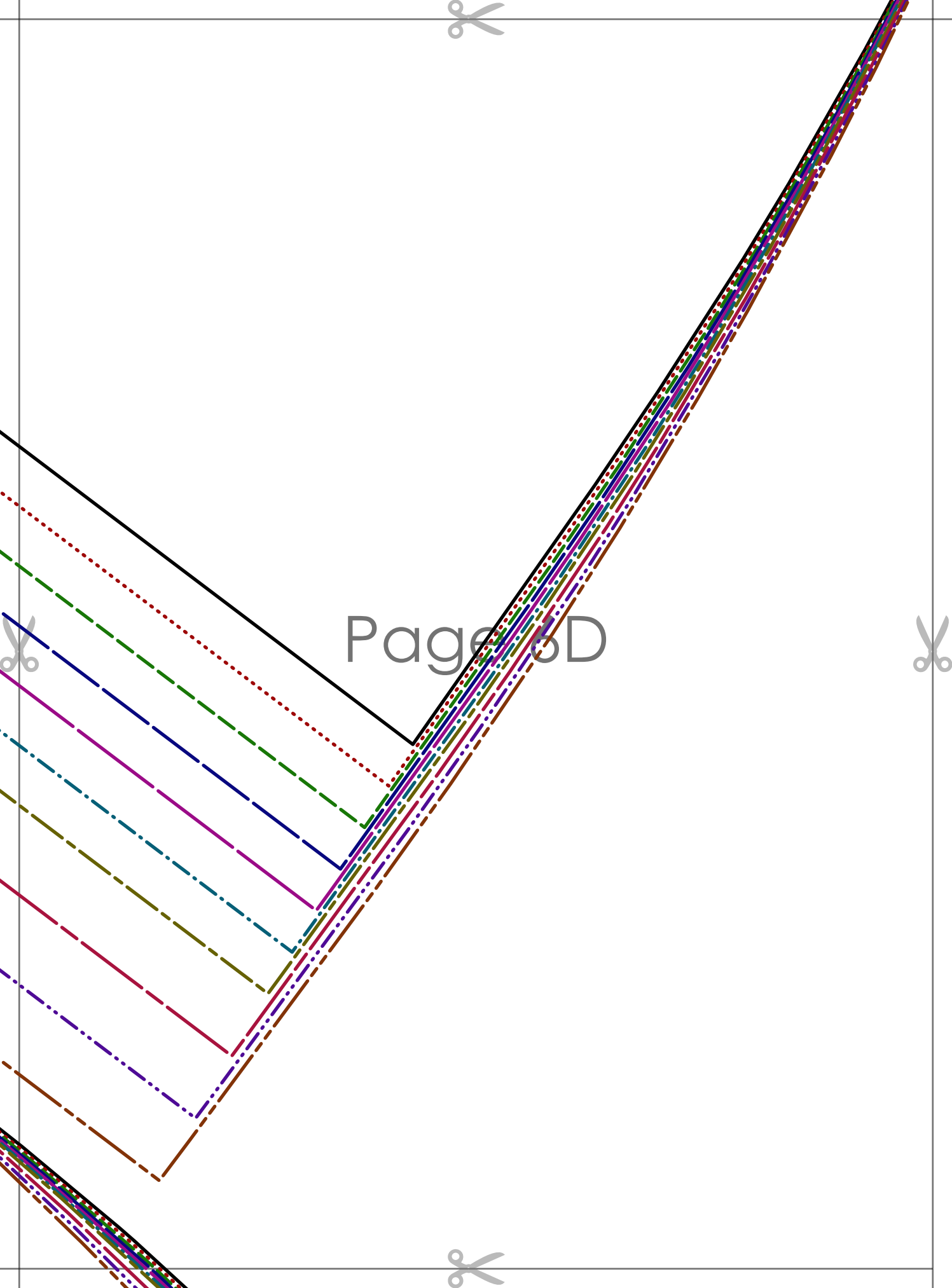
UPPER FRONT BODICE
cut 1 main fabric + 1 lining
(on the fold)

6B





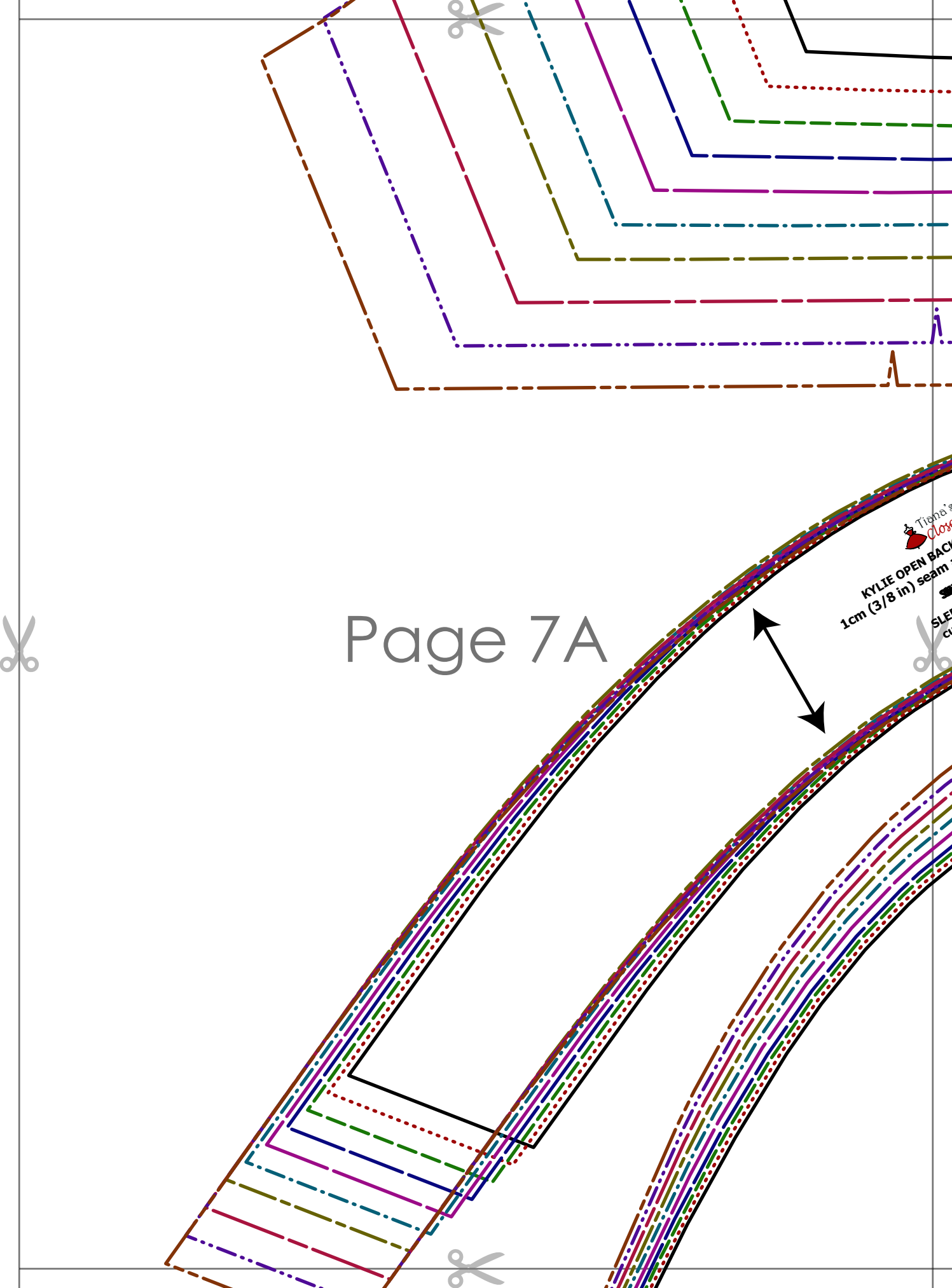
Page 6C



Page 6D

Page 7A

Tiena's
Close
KYLIE OPEN BACK
1cm (3/8 in) seam
SLEEVE
cut



Tiana's Closet
OPEN BACK MIDI DRESS
seam allowance included
SLEEVE FACING
cut 2 mirrored

Page 7B



KYLIE OPEN BACK MIDI DRESS
1cm (3/8 in) seam allowance included

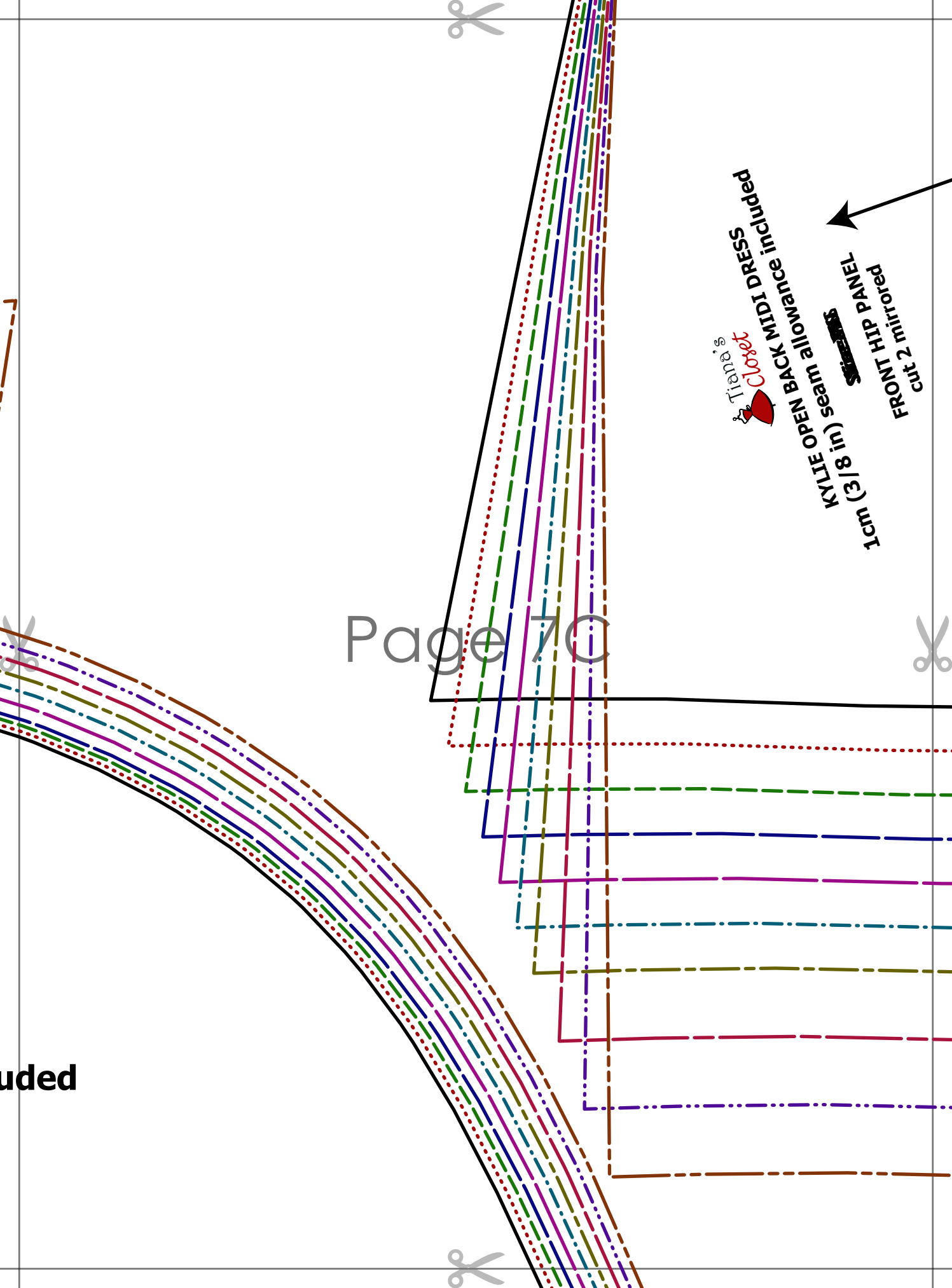
~~Size M~~

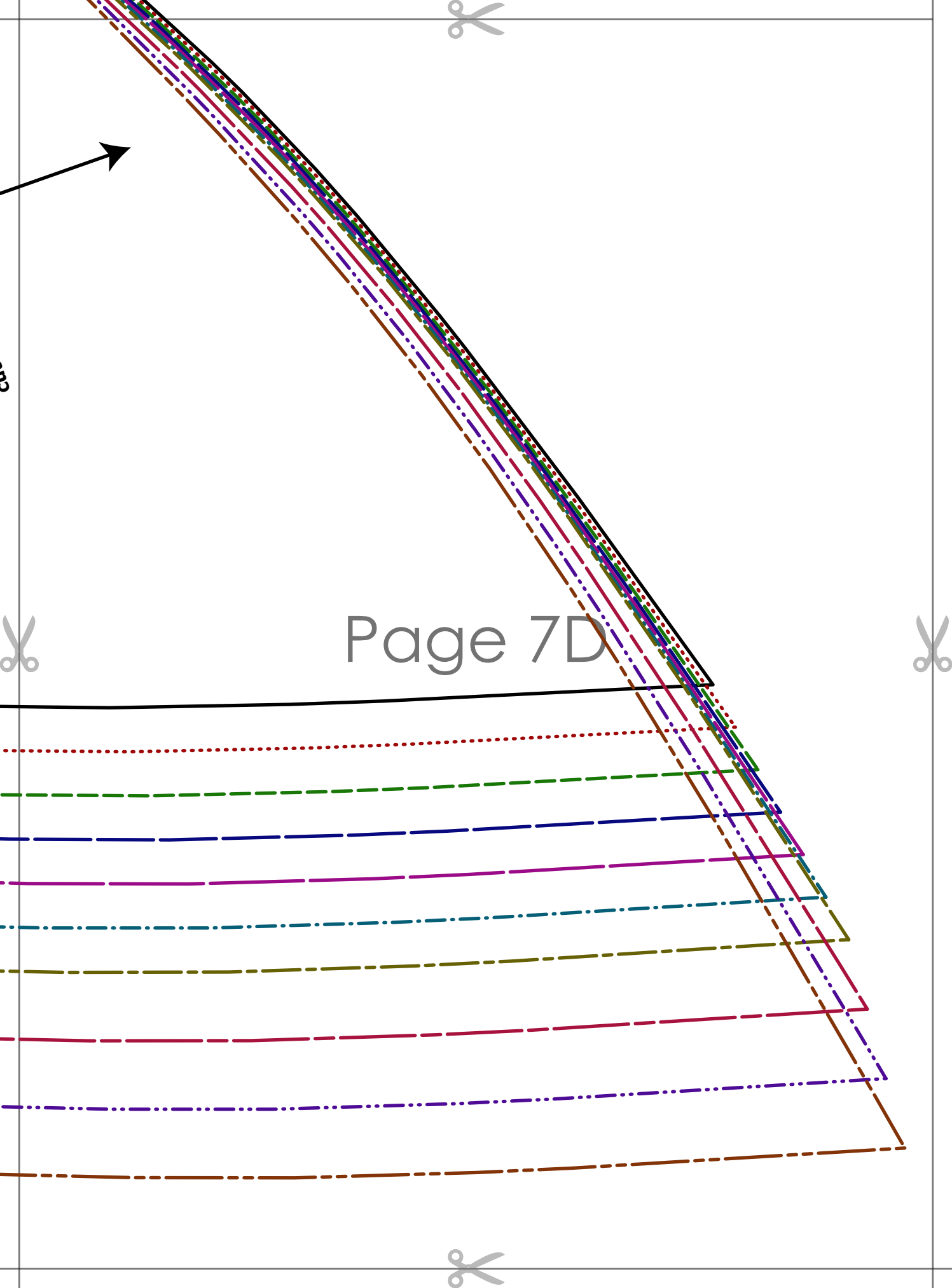
SLEEVE
cut 2 mirrored

uded

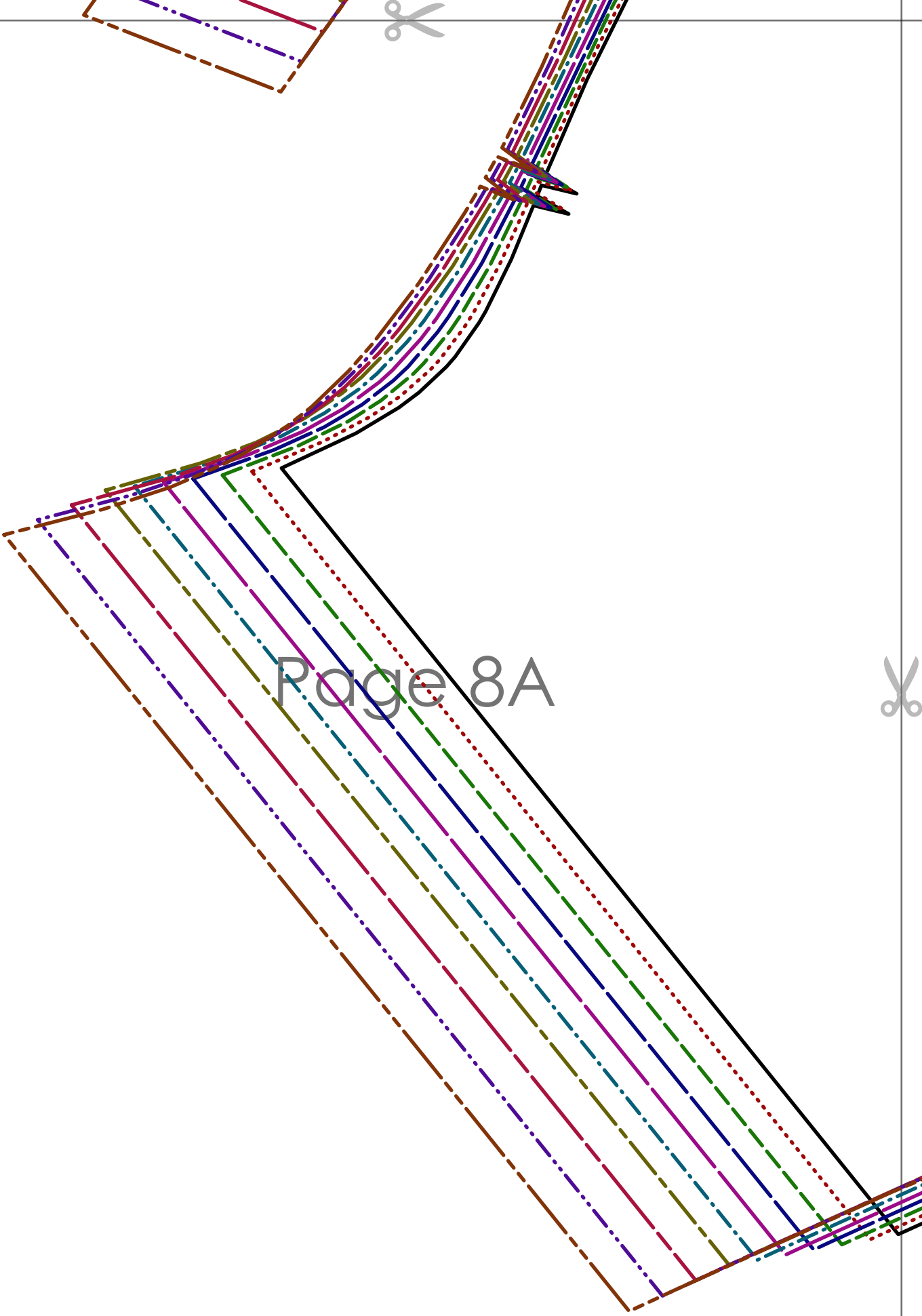
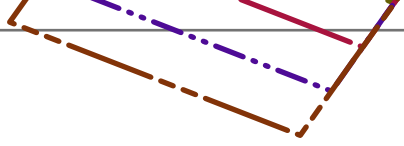
Page 70

 Tiana's Closet
KYLEE OPEN BACK MIDI DRESS
1cm (3/8") seam allowance included
FRONT HIP PANEL
cut 2 mirrored





Page 7D

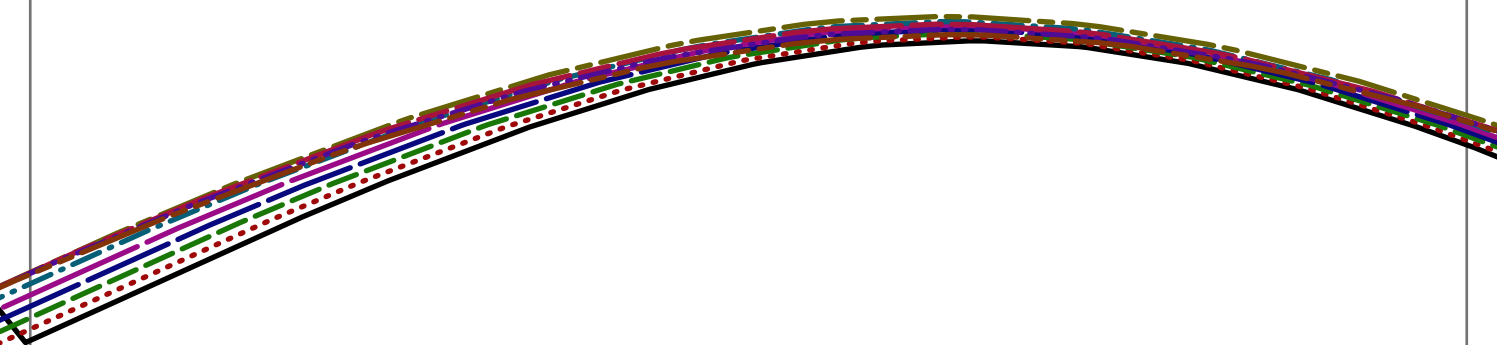


Page 8A

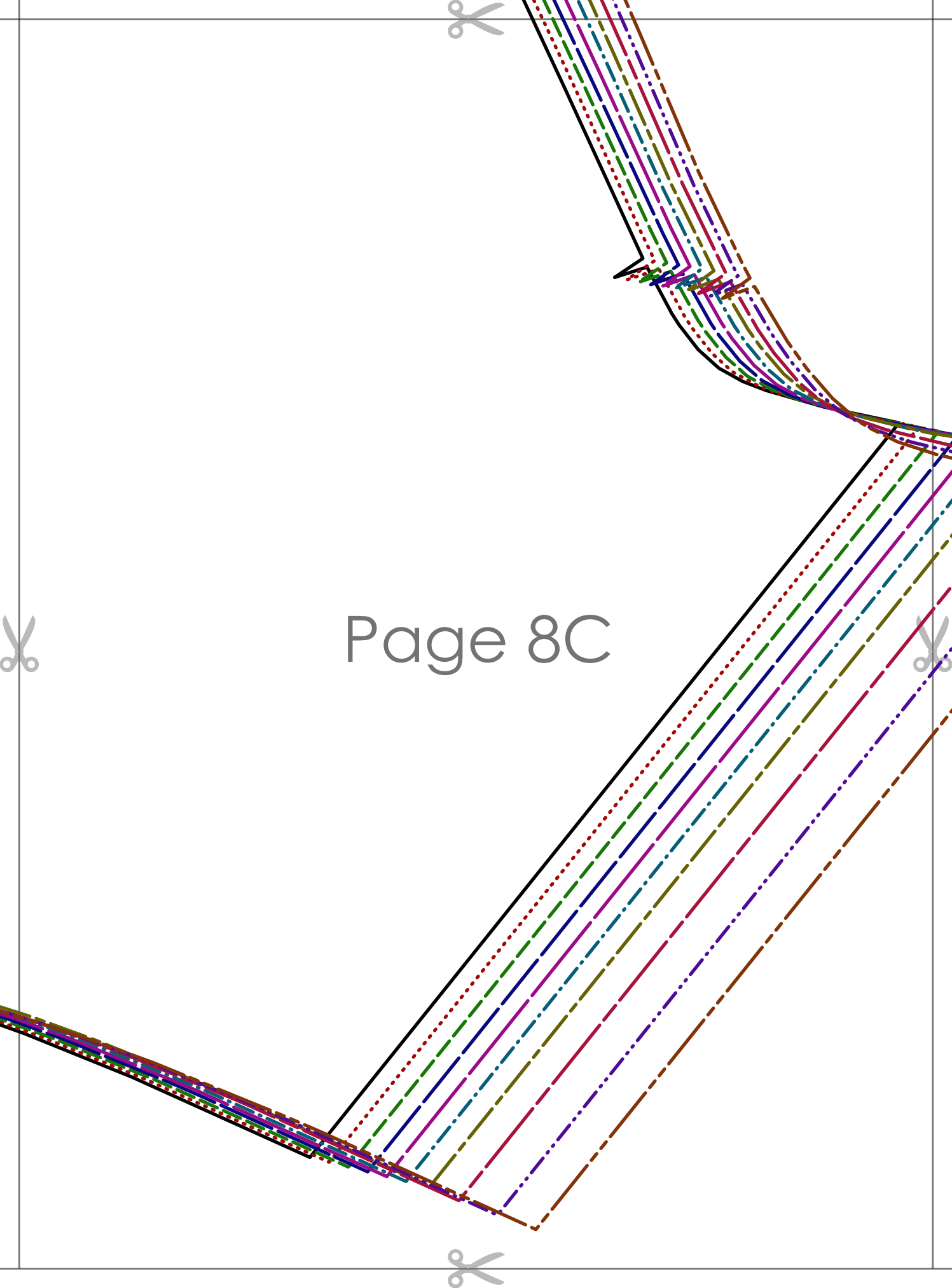


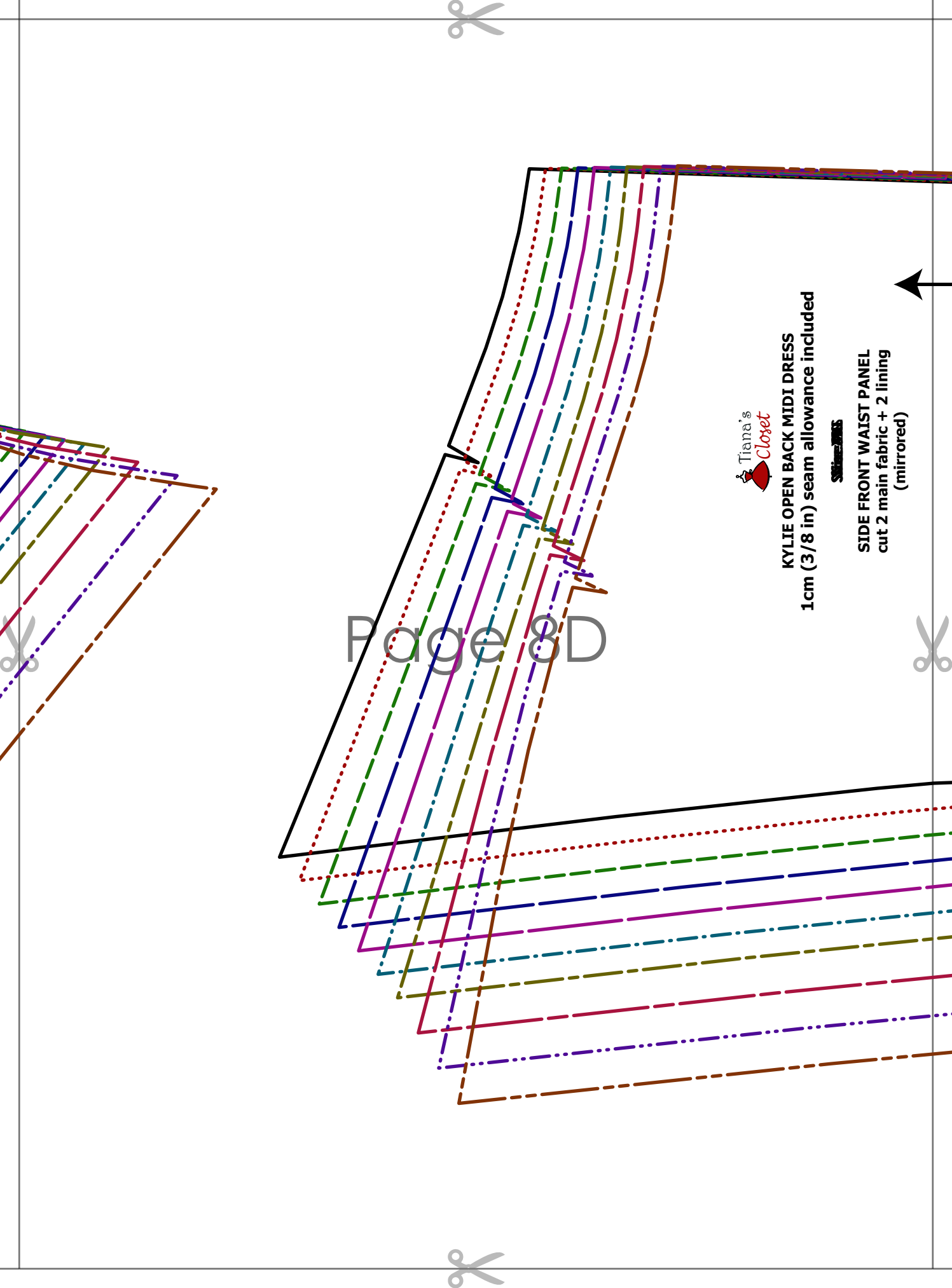


Page 8B



Page 8C





Page 8 D

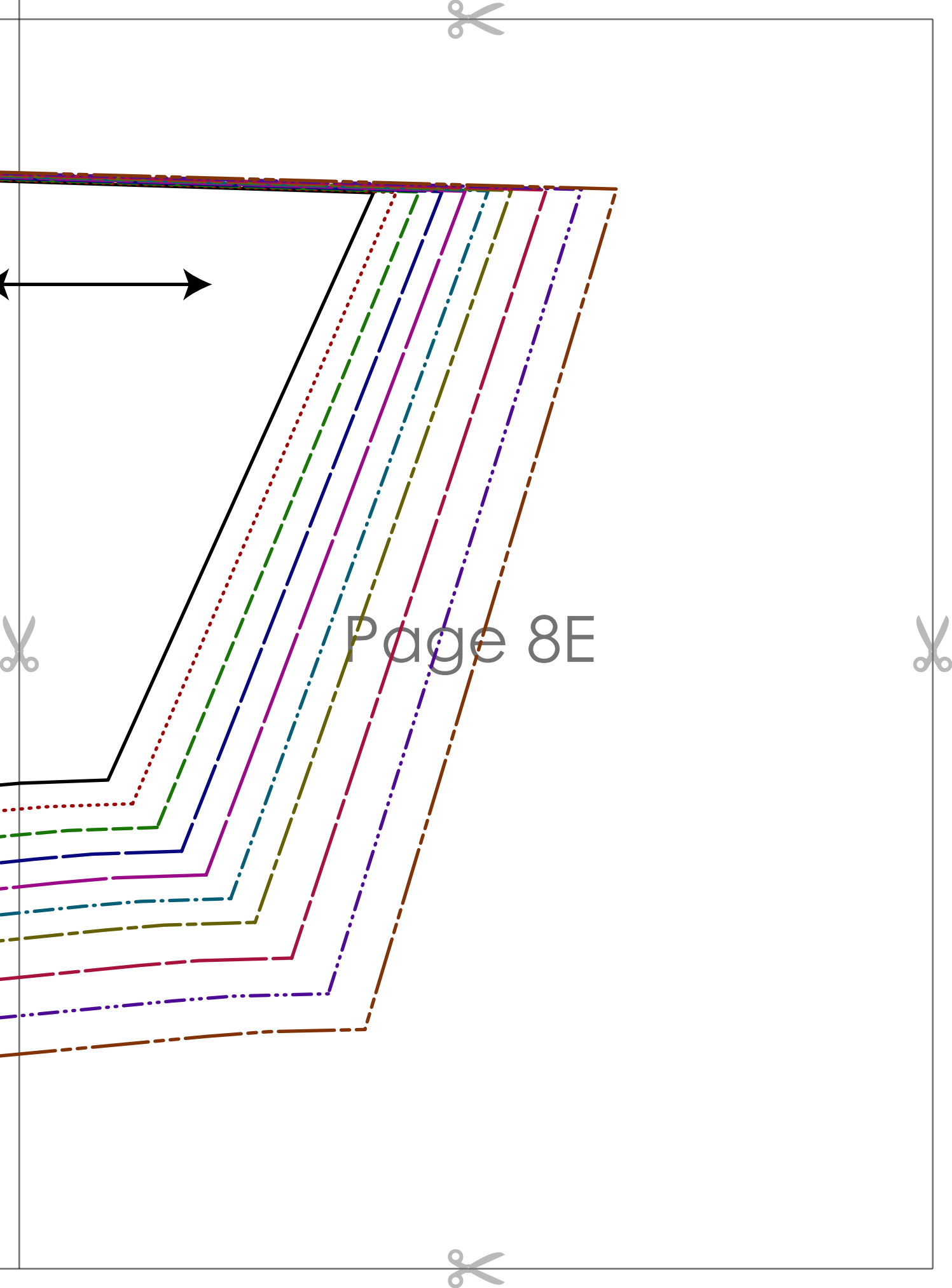


KYLIE OPEN BACK MIDI DRESS
1cm (3/8 in) seam allowance included

~~Size 2-26~~

SIDE FRONT WAIST PANEL
cut 2 main fabric + 2 lining
(mirrored)





Page 8E

