

PRINTING INSTRUCTIONS

- Tiana's Closet sewing patterns are made in Layered PDF format, which means all sizes are saved in one file and can be shown or hidden. It is recommended to use Adobe Acrobat Reader (paid version on Mac OS, free on Windows) or Foxit PDF Reader (free, works on Windows only) to read the file correctly. In order to choose the desired size(s), go to Layers tab of your PDF reader, uncheck all boxes except for the desired size(s) and the box Print for all sizes.

- When printing the pattern, go to Print settings, in the tab Scale choose Custom scale: 100% (or Scaling: None or Actual Size) to print true to size. Note: some computers print smaller than true size even when you choose 100% scale, so you will have to adjust the scale to a little larger than 100% and measure the test square until you get the true size using the test rulers

- Always print the first page of the file and measure to avoid waste of paper.

- After printing the pattern, cut the pages along the lines with scissors icon, align and tape the pages according to their sequences. For example, pages 1A, 1B, 1C, 1D... are lined up in one row from left to right, pages 1A, 2A, 3A, 3B... are lined up in one column from up to down.

- You can find photo instruction for printing sewing patterns on Tiana's Closet website:

<https://tianascloset.com/index.php/how-to-print-tianascloset-patterns/>

SIZE TABLE

WOMEN'S CLOTHING SIZE

- Sizing is based on body measurements.

- If between sizes, size up for woven fabric, size down for knit fabric.

Unit: centimeter

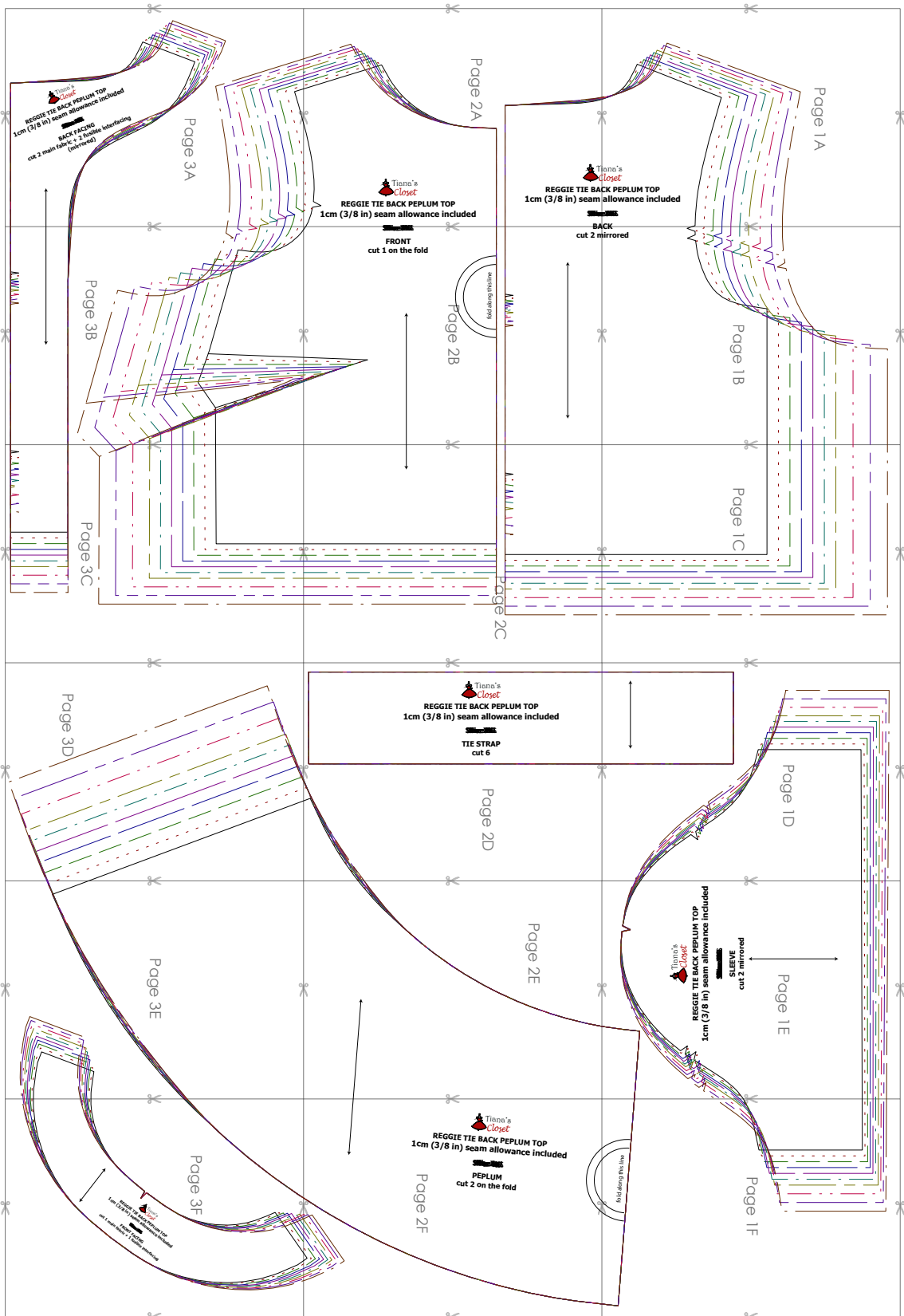
| Size | XXS | XS | S | M | L | XL | XXL | 3XL | 4XL | 5XL |
|-----------------------|-----|----|----|-----|-----|-----|-----|------|-----|------|
| Bust | 80 | 84 | 88 | 92 | 96 | 100 | 104 | 110 | 116 | 122 |
| Waist | 60 | 64 | 68 | 72 | 76 | 80 | 84 | 90 | 96 | 102 |
| Hip | 88 | 92 | 96 | 100 | 104 | 108 | 112 | 118 | 124 | 130 |
| Cross shoulder | 35 | 36 | 37 | 38 | 39 | 40 | 41 | 42.5 | 44 | 45.5 |

Unit: inch

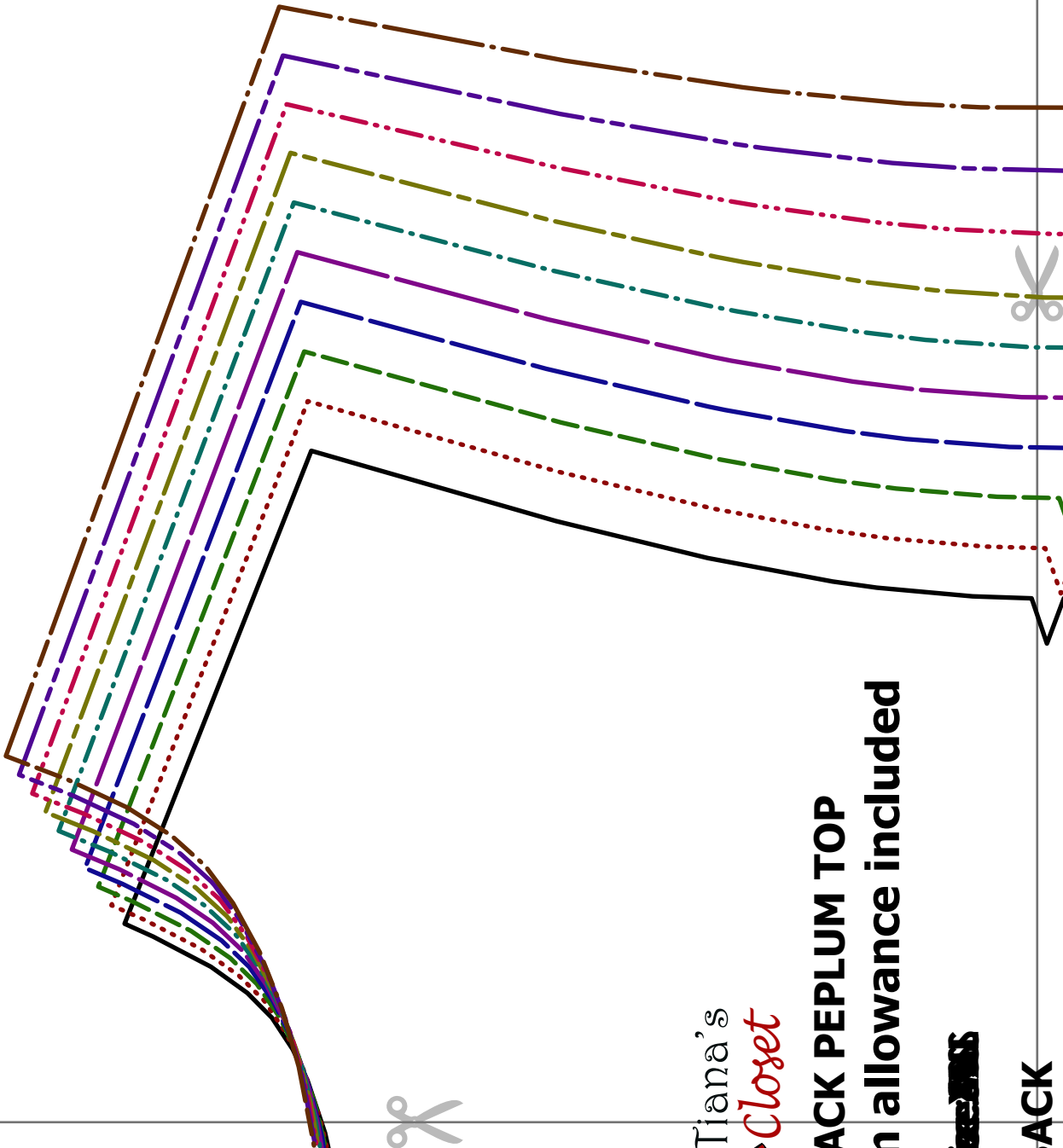
| Size | XXS | XS | S | M | L | XL | XXL | 3XL | 4XL | 5XL |
|-----------------------|------|------|------|------|------|------|------|------|------|------|
| Bust | 31.5 | 33.1 | 34.6 | 36.2 | 37.8 | 39.4 | 40.9 | 43.3 | 45.7 | 48.0 |
| Waist | 23.6 | 25.2 | 26.8 | 28.3 | 29.9 | 31.5 | 33.1 | 35.4 | 37.8 | 40.2 |
| Hip | 34.6 | 36.2 | 37.8 | 39.4 | 40.9 | 42.5 | 44.1 | 46.5 | 48.8 | 51.2 |
| Cross shoulder | 13.8 | 14.2 | 14.6 | 15.0 | 15.4 | 15.7 | 16.1 | 16.7 | 17.3 | 17.9 |

For more ideas and free sewing patterns, visit <http://tianascloset.com>

PATTERN LAYOUT



Page 1A



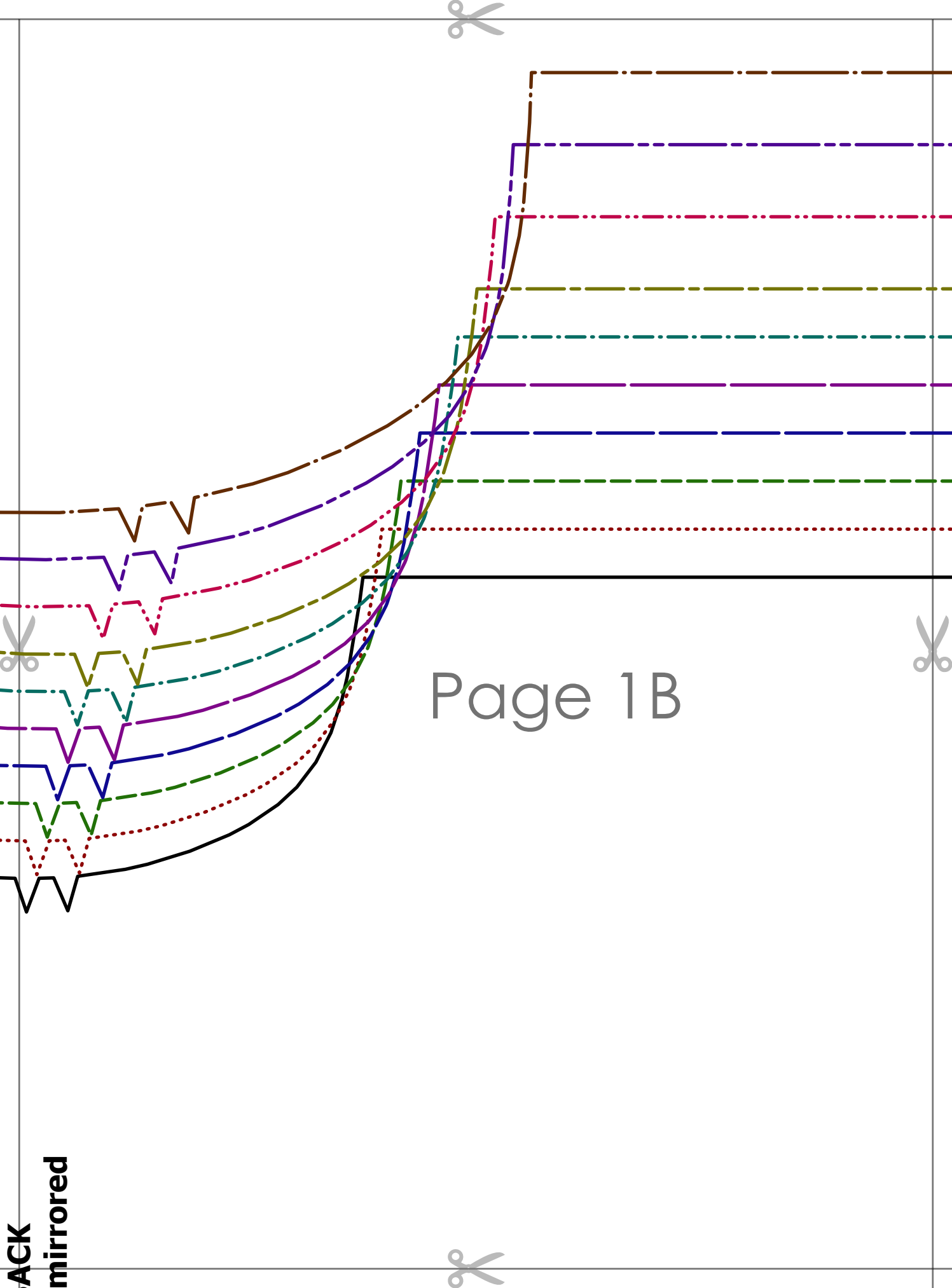
Tiana's
Closet

BACK PEPLUM TOP
in allowance included

~~2025~~

ACK

ACK mirrored



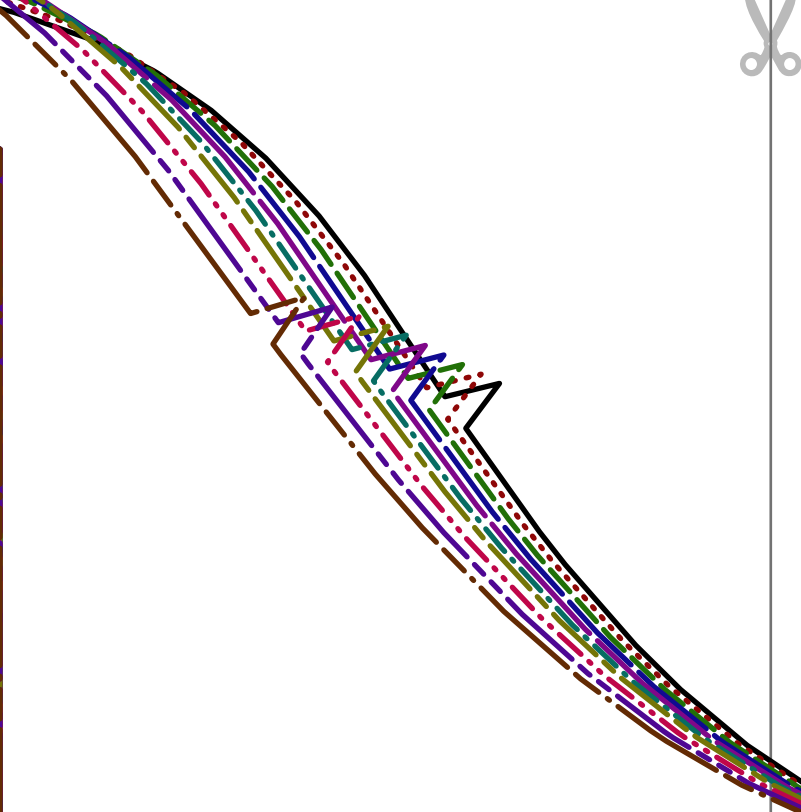
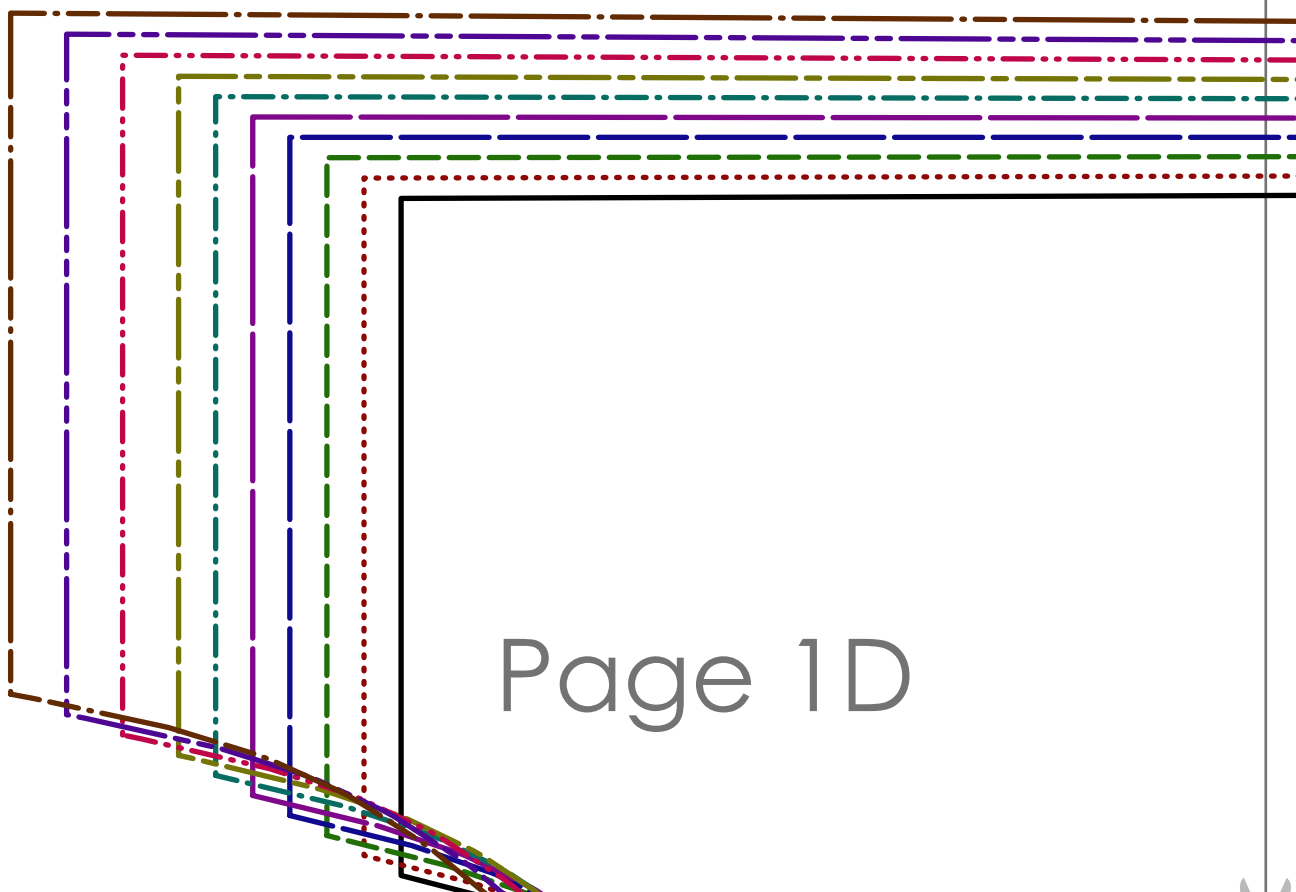
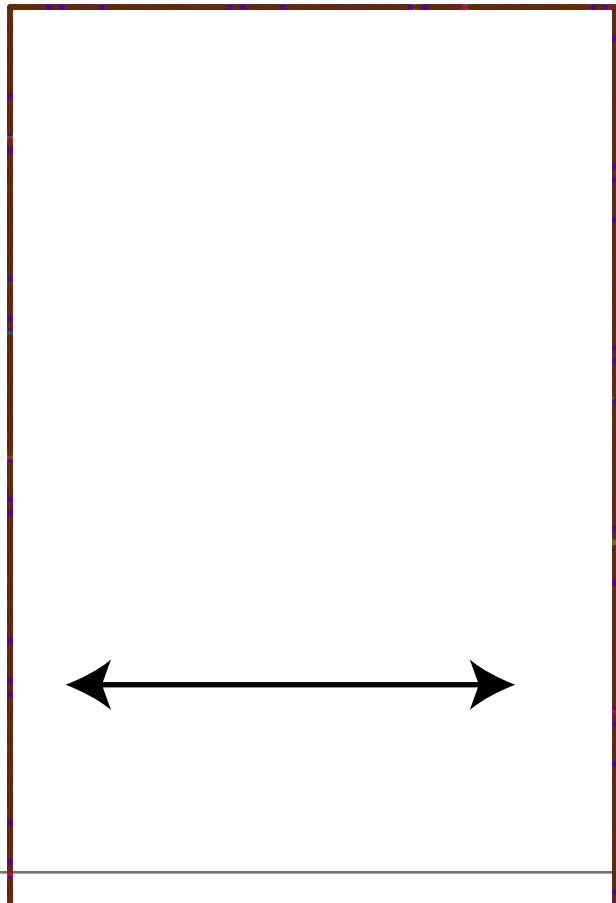
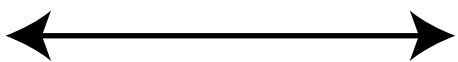
Page 1B



Page 1C

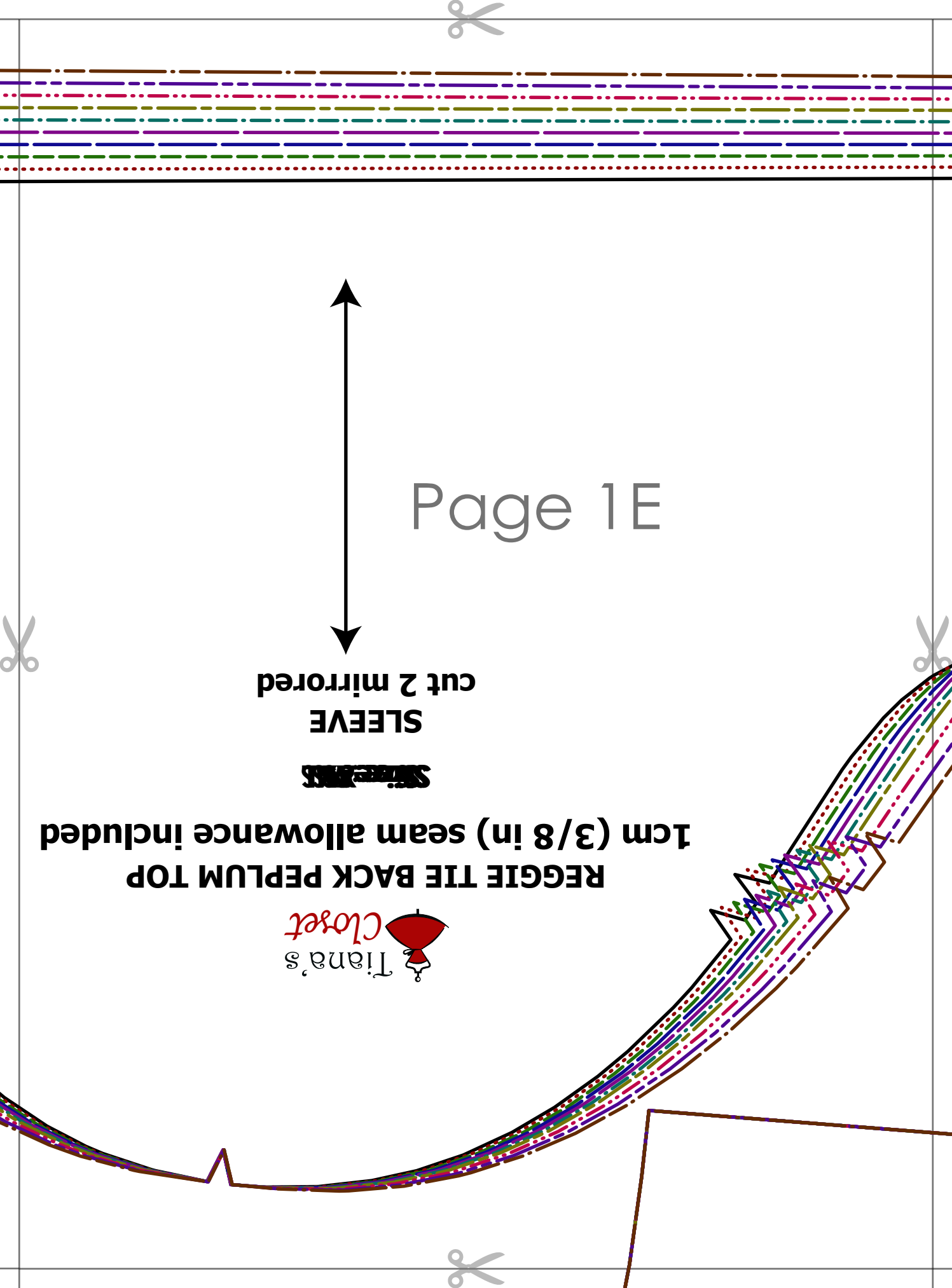


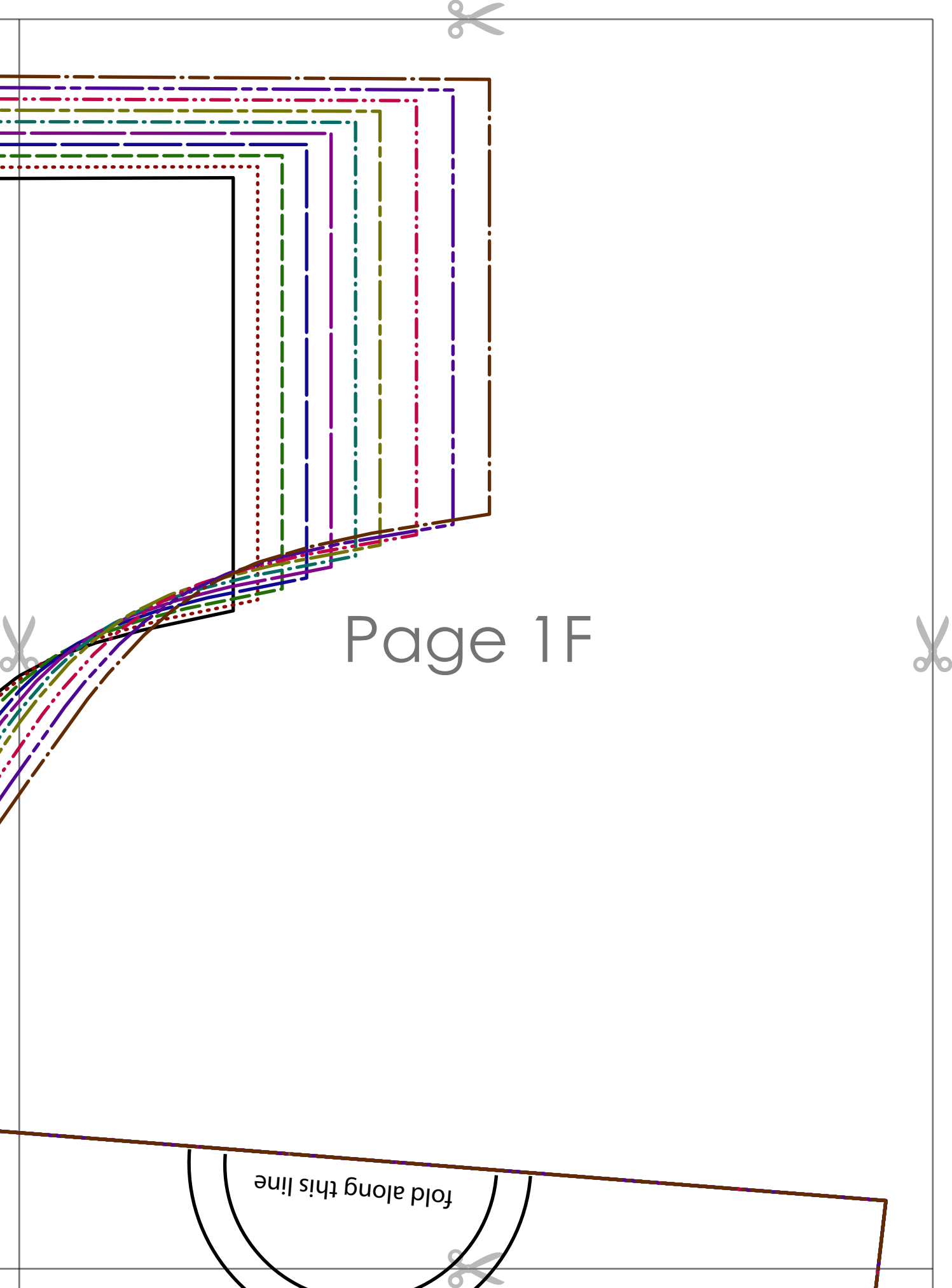
Page 1D



Page 1E

REGGIE TIE BACK PEPLUM TOP
1cm (3/8 in) seam allowance included
~~SLEEVE~~
SLEEVE
cut 2 mirrored

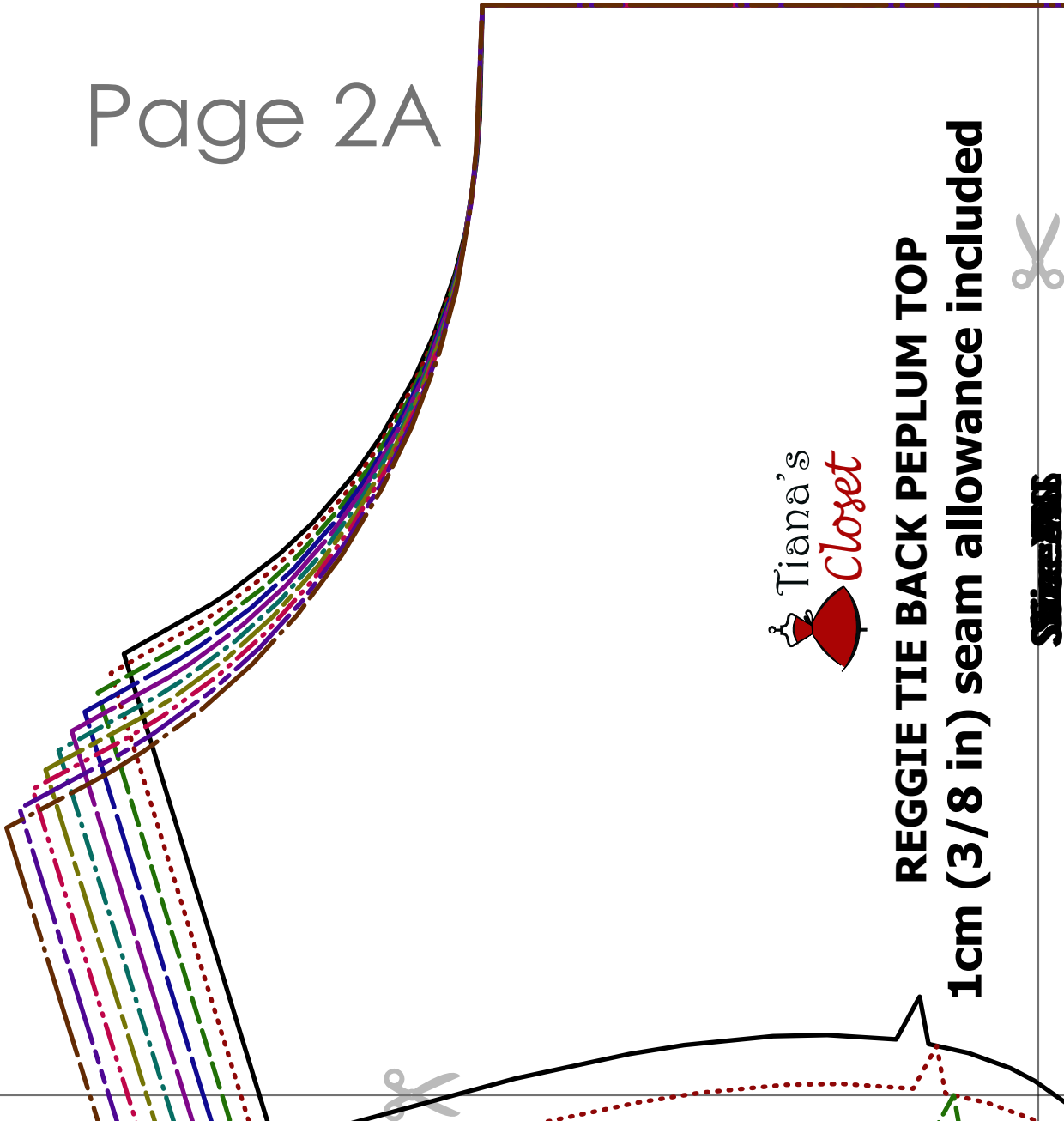




Page 1F

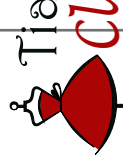
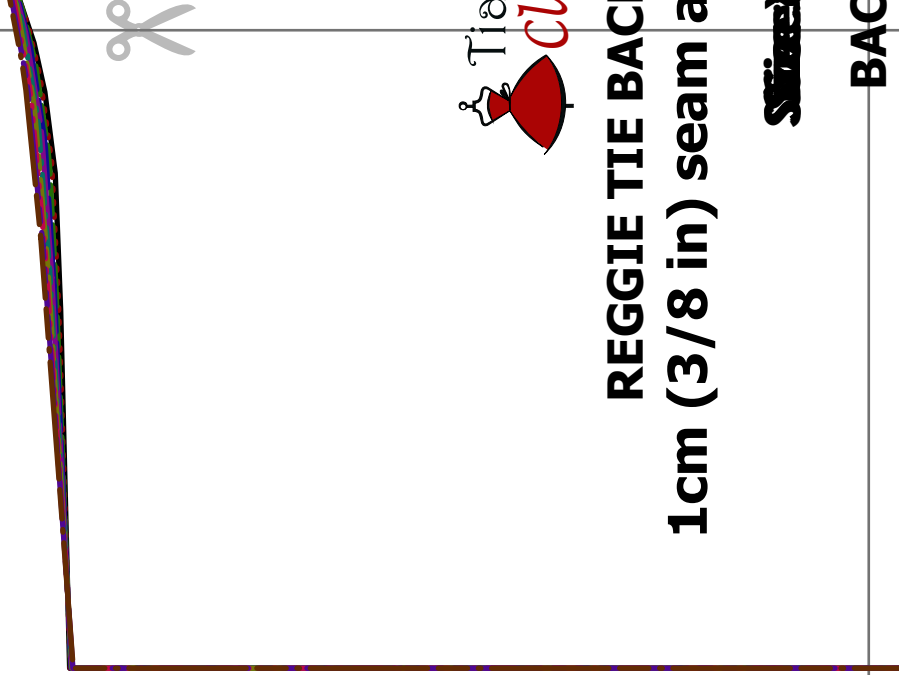
fold along this line

Page 2A



REGGIE TIE BACK PEPLUM TOP
1cm (3/8 in) seam allowance included

STITCHES



REGGIE TIE BACK
1cm (3/8 in) seam allowance included

STITCHES

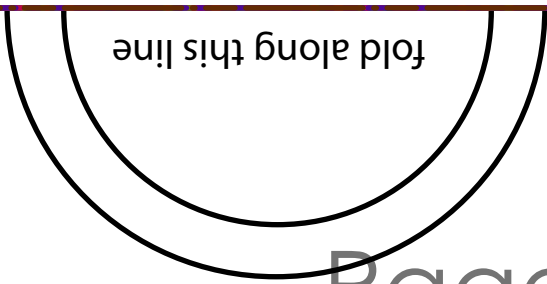
BAC

BAC

cut 2 mi



fold along this line



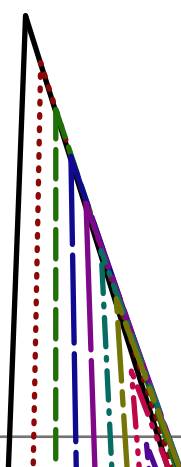
Page 2B

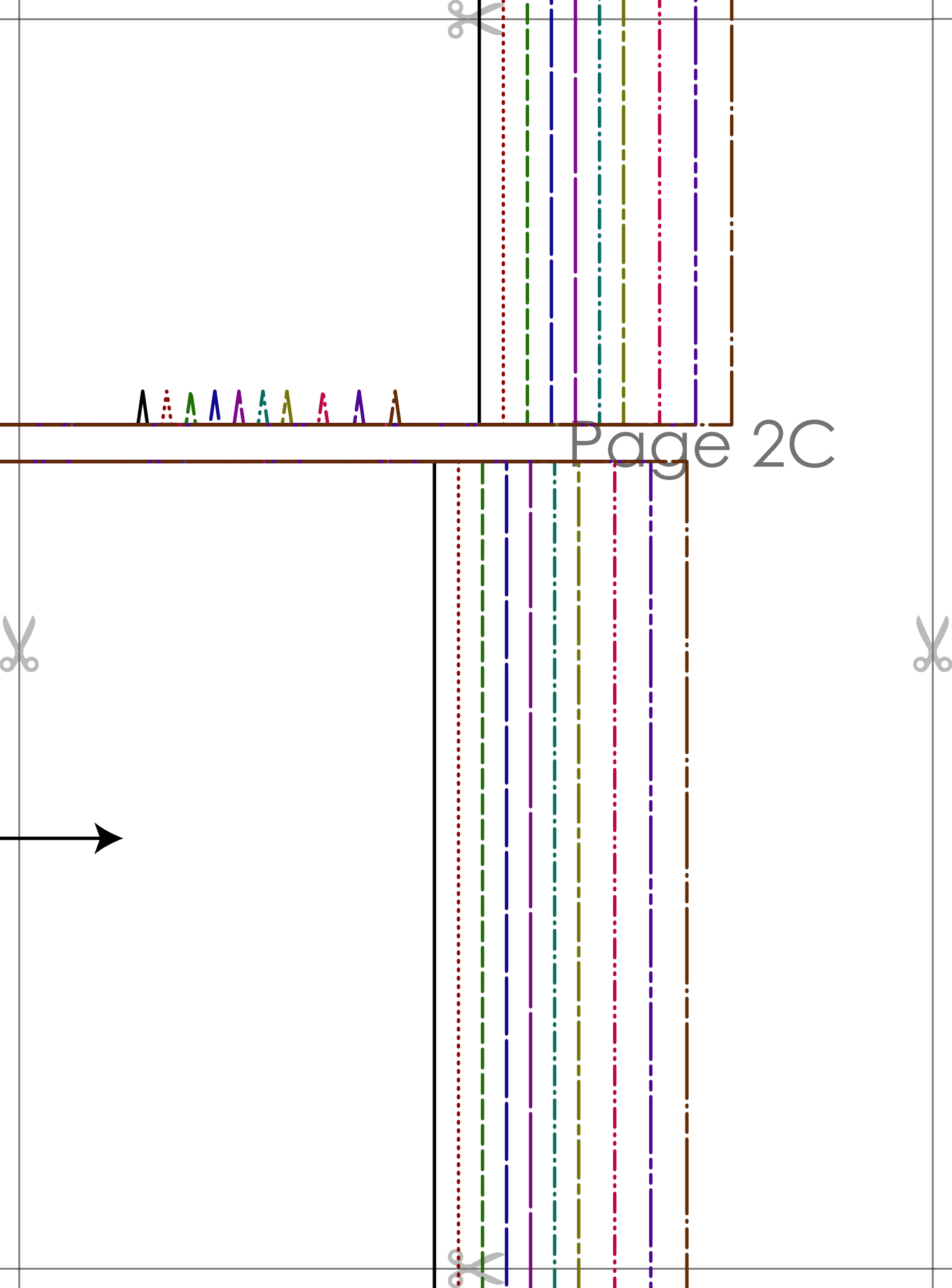


~~STRIPES~~

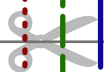
FRONT

cut 1 on the fold





A A A A A A A A A A



Page 2C



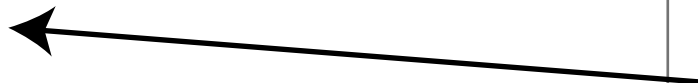
REGGIE TIE BACK PEPLUM TOP
1cm (3/8 in) seam allowance included

~~STRAP~~

TIE STRAP
cut 6

Page 2D

Page 2E



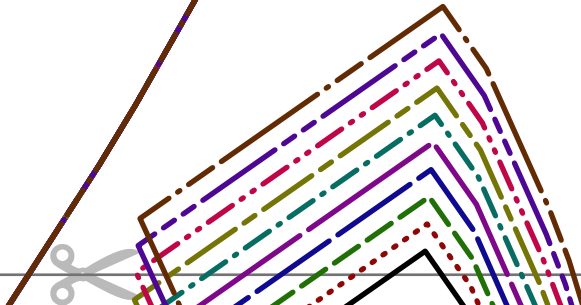


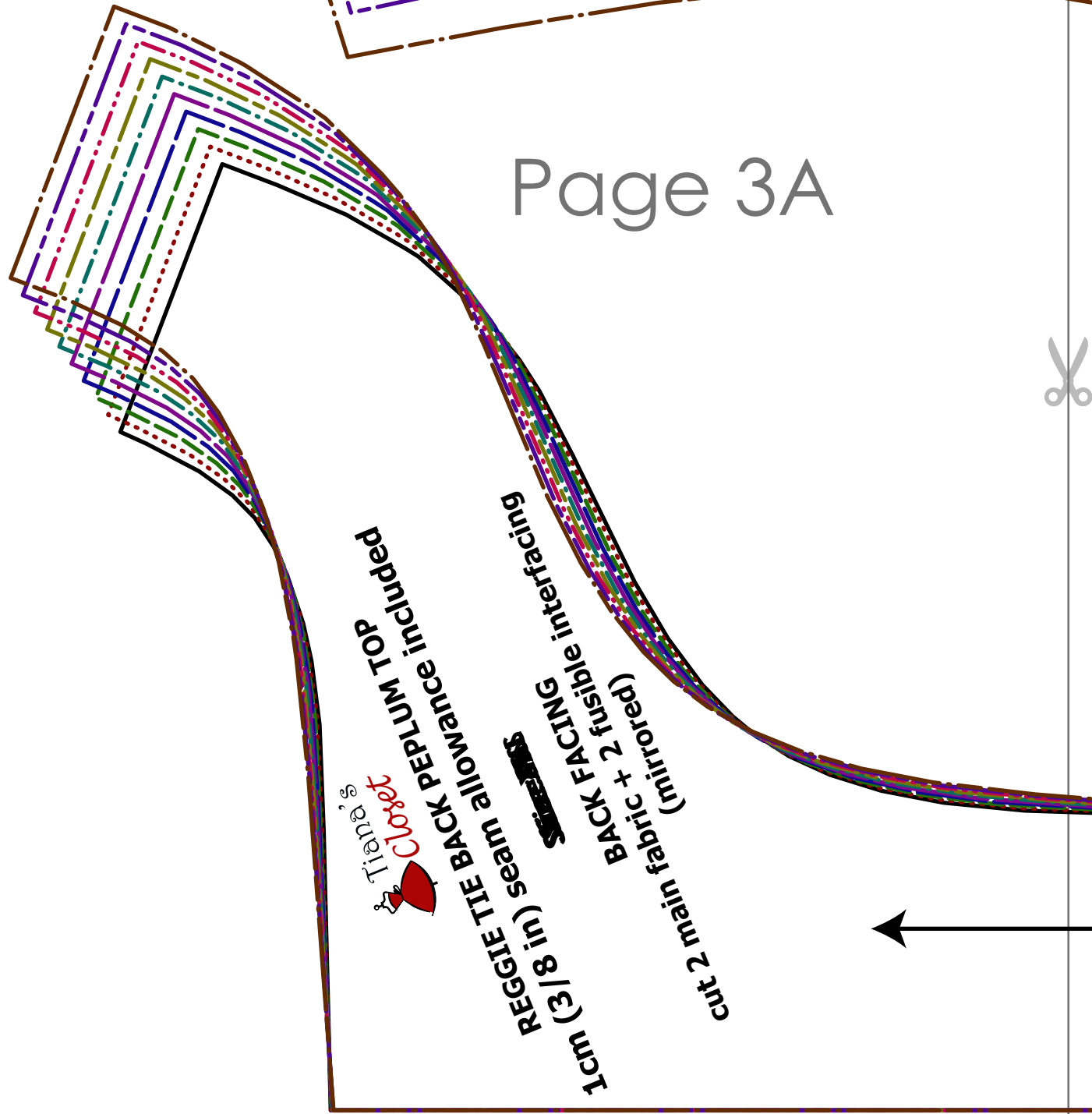
REGGIE TIE BACK PEPLUM TOP
1cm (3/8 in) seam allowance included

~~SWIRL~~

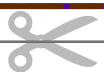
PEPLUM
cut 2 on the fold

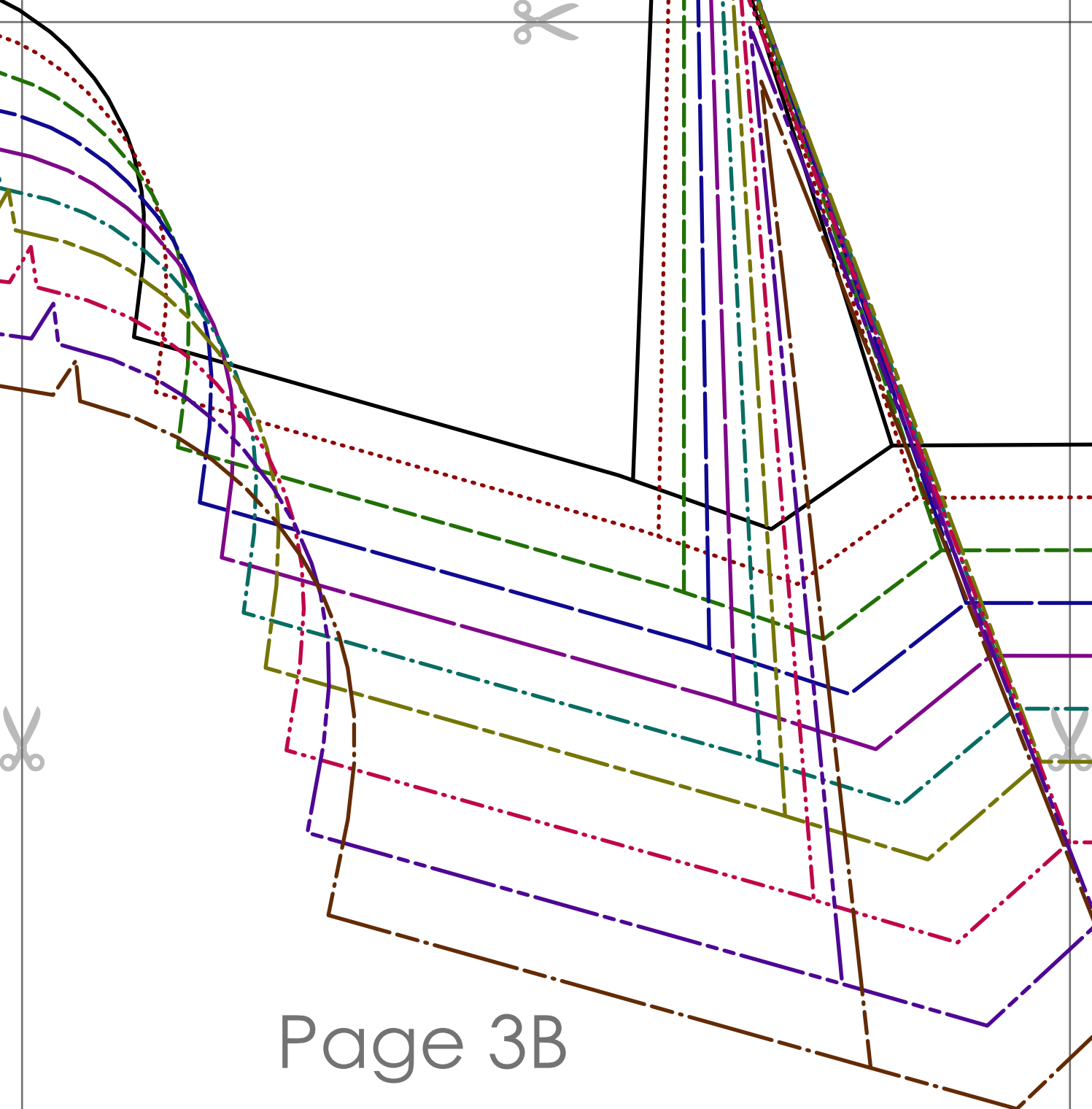
Page 2F



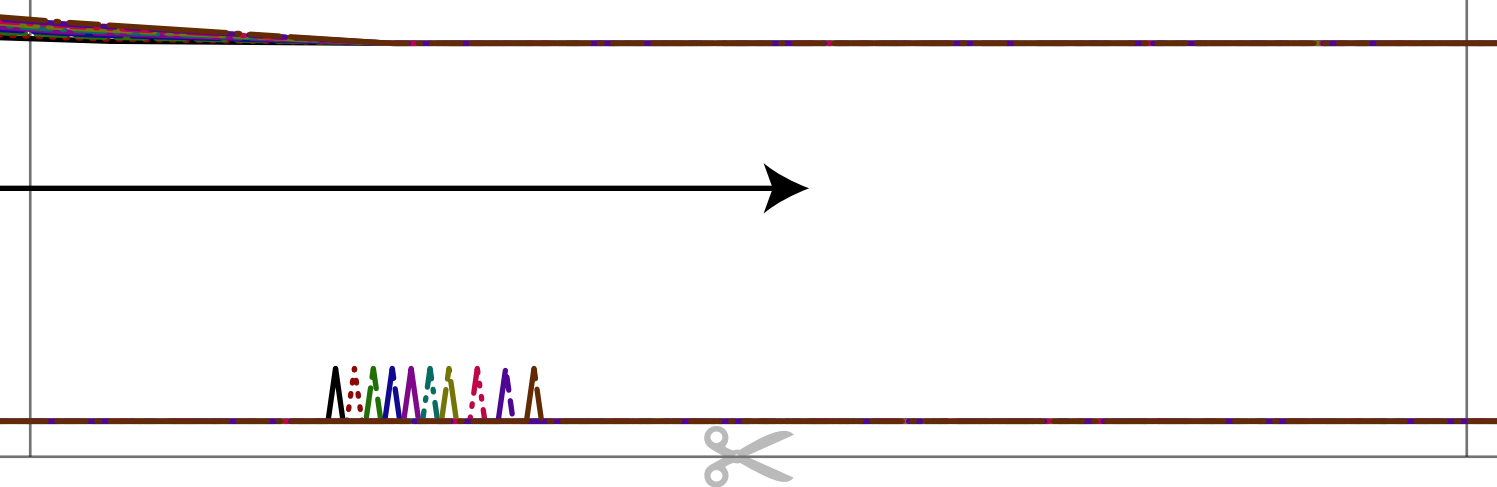


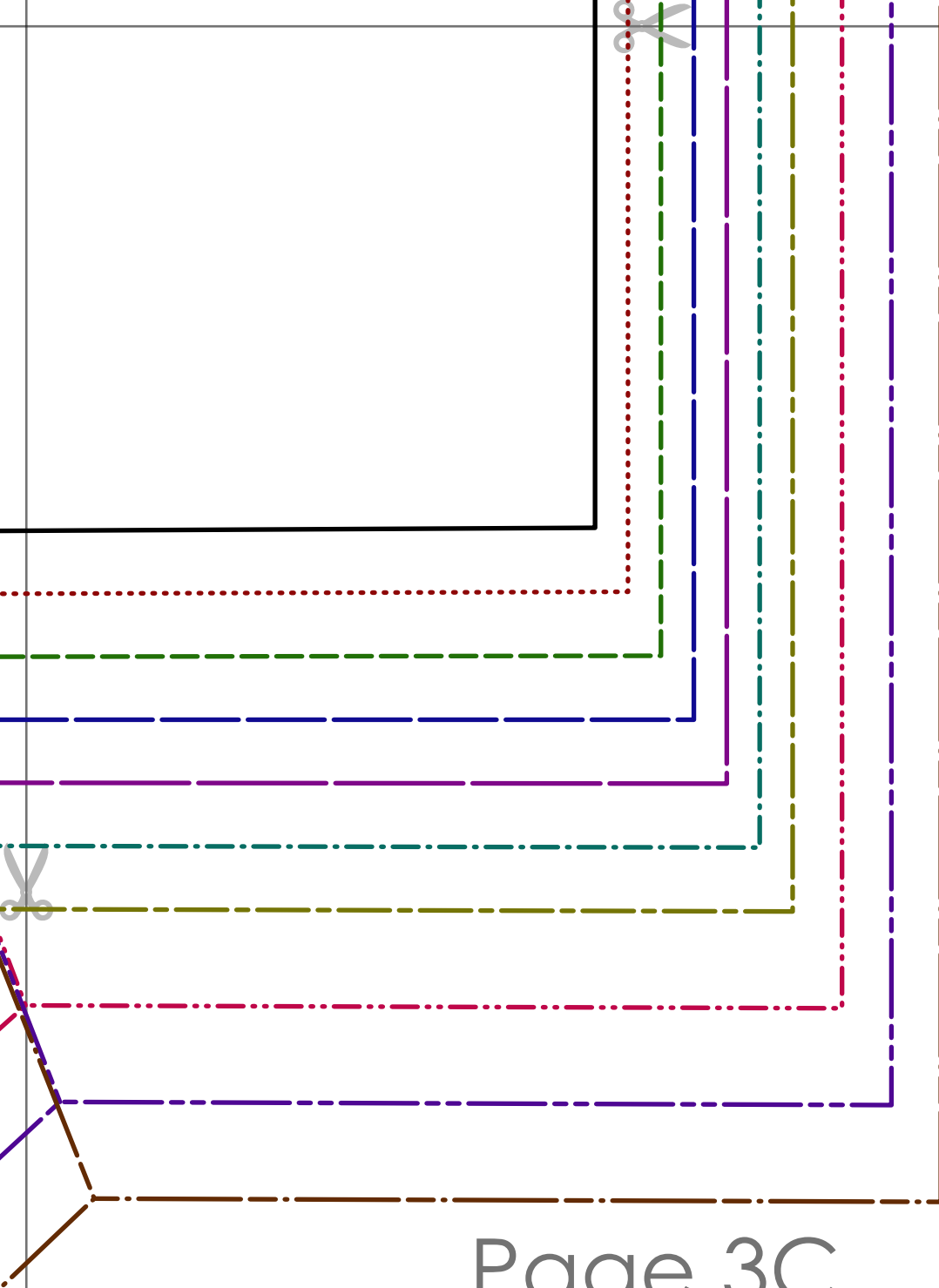
 **REGGIE THE BACK REFLUM TOP**
~~SEAM~~ seam allowance included
1cm (3/8 in) seam allowance interfacings
BACK FACING
(mirrored)
cut 2 main fabric + 2 fusible interfacings



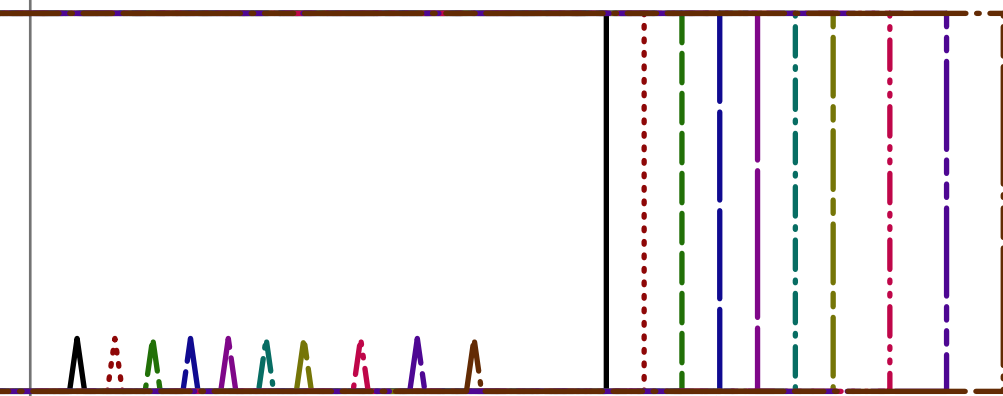


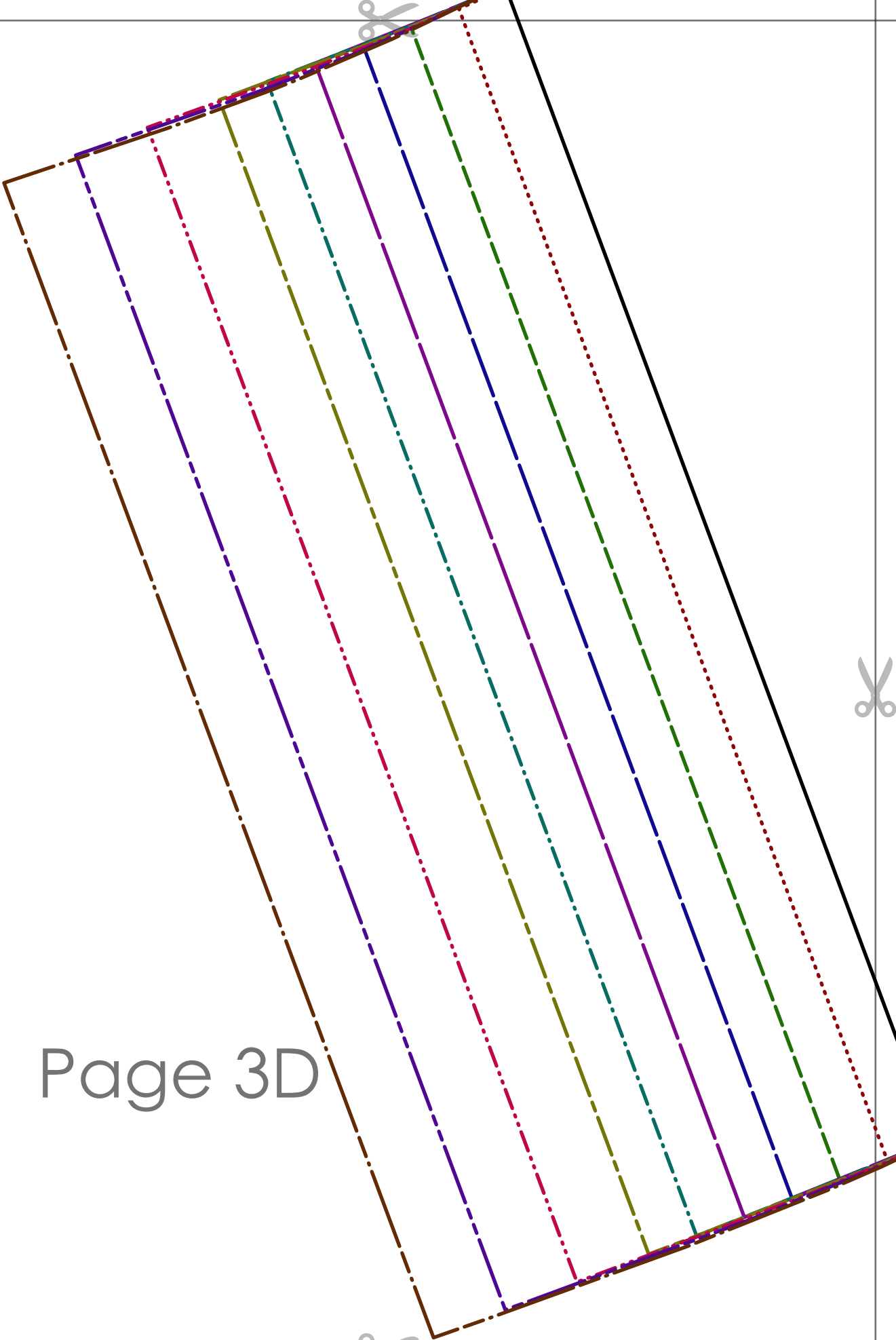
Page 3B





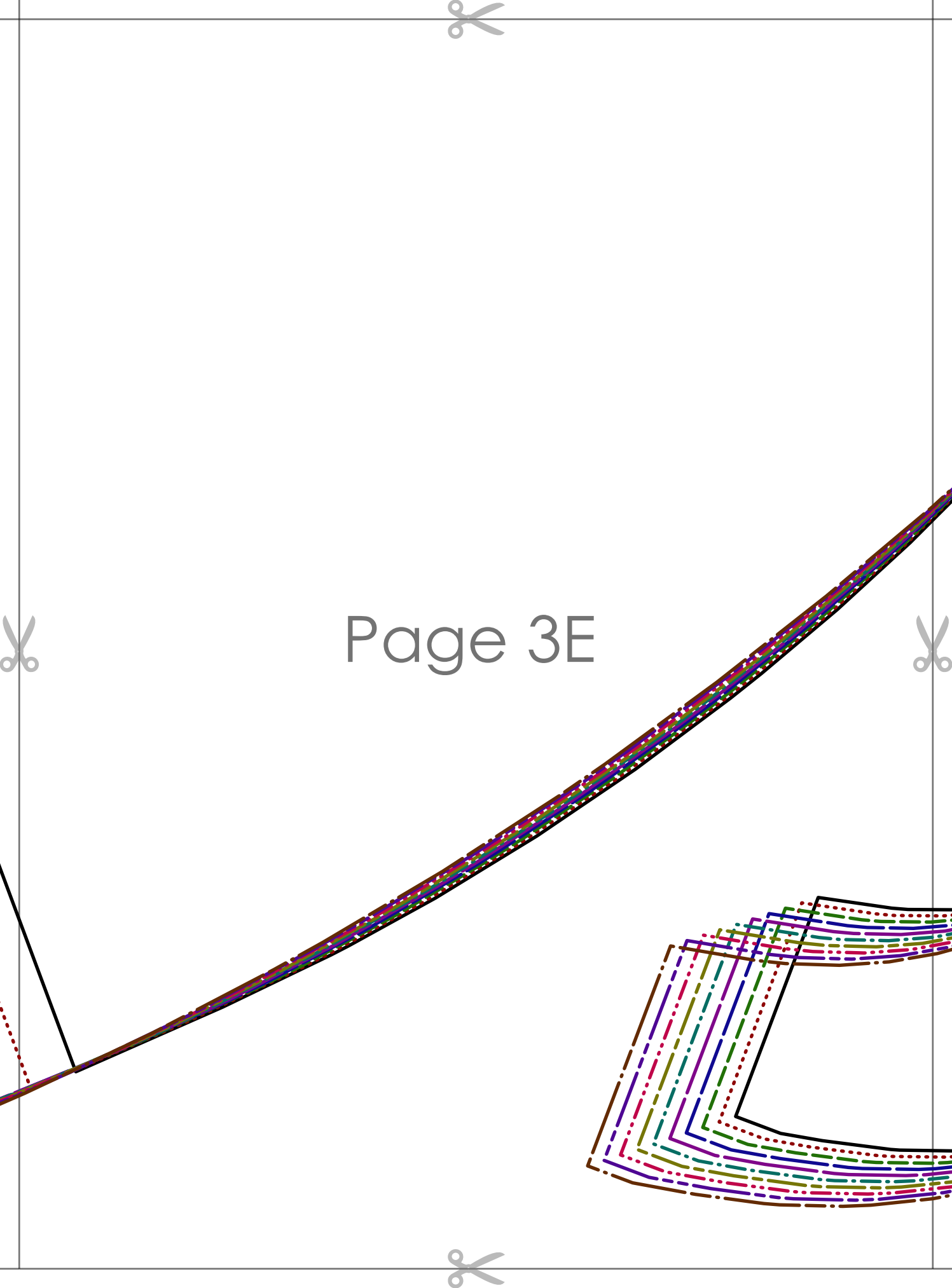
Page 3C





Page 3D

Page 3E



Page 3F



REGGIE TIE BACK PEPLUM TOP
1cm (3/8 in) seam allowance included
FRONT FACING
cut 1 main fabric + 1 fusible interfacing

