

SIZE TABLE
WOMEN'S CLOTHING SIZE

- Sizing is based on body measurements.
- If between sizes, size up for woven fabric; size down for knit fabric.

Unit: centimeter

Size	XXS	XS	S	M	L	XL	XXL	3XL	4XL	5XL
Bust	80	84	88	92	96	100	104	108	112	116
Waist	60	64	68	72	76	80	84	88	92	96
Hip	84	88	92	96	100	104	108	112	116	120
Cross shoulder	35	36	37	38	39	40	41	42.5	44	45.5

Unit: inch

Size	XXS	XS	S	M	L	XL	XXL	3XL	4XL	5XL
Bust	31.5	33.1	34.6	36.2	37.8	39.4	40.9	42.5	45.7	46.0
Waist	23.6	25.2	26.8	28.3	29.9	31.5	33.1	34.7	37.0	38.2
Hip	34.6	36.2	37.8	39.4	40.9	42.5	44.1	45.7	48.8	51.2
Cross shoulder	13.8	14.2	14.6	15.0	15.4	15.7	16.1	16.7	17.3	17.9

PRINTING INSTRUCTIONS

Tiana's Closet sewing patterns are made in layered PDF format, which means all sizes are saved in one file and can be shown or hidden. It is recommended to use Adobe Acrobat Reader (paid version on Mac, OS, free on Windows) or Foxit PDF Reader (free, works on Windows only) to read the file correctly. In order to choose the desired size(s), go to Layer tab of your PDF reader, uncheck all boxes except for the desired size(s) and the box that for all sizes.

- When printing the pattern, go to Print settings. In the tab Scale choose Custom scale: 100% (or Scaling: None or Actual Size) to print true to size. Note: some computers print smaller than true size even when you choose 100% scale, so you will have to adjust the scale to a little larger than 100% and measure the test square until you get the true size using the test ruler.

- Always print the first page of the file and measure to avoid waste of paper.

- After printing the pattern, cut the pages along the lines with scissors icon, align and tape the pages according to their sequences. For example, pages 1A, 1B, 1C, 1D, ... one line up in one row from left to right, pages 1A, 2A, 3A, 3B, ... one line up in one column from up to down.

- You can find photo instruction for printing sewing patterns on Tiana's Closet website: <http://www.tianascloset.com/files/pdf/how-to-print-sewing-patterns.pdf>

Tiana's Closet
PALOMA SPLIT NECK BLOUSE
1cm (3/8 in) seam allowance included

LOWER FRONT
cut 1 on the fold

Tiana's Closet
PALOMA SPLIT NECK BLOUSE
1cm (3/8 in) seam allowance included

SLEEVE
cut 2 mirrored

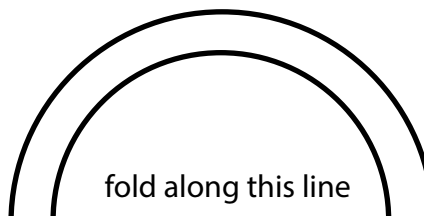
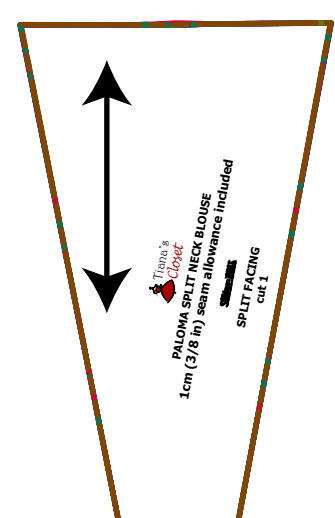
Tiana's Closet
PALOMA SPLIT NECK BLOUSE
1cm (3/8 in) seam allowance included
FRONT YOKE
cut 2 mirrored pieces

Tiana's Closet
PALOMA SPLIT NECK BLOUSE
1cm (3/8 in) seam allowance included
BACK YOKE
cut 2 on the fold

Tiana's Closet
PALOMA SPLIT NECK BLOUSE
1cm (3/8 in) seam allowance included

LOWER BACK
cut 1 on the fold

- SIZE XXS
- SIZE XS
- SIZE S
- SIZE M
- SIZE L
- SIZE XL
- SIZE XXL
- SIZE 3XL
- SIZE 4XL
- SIZE 5XL



fold along this line