

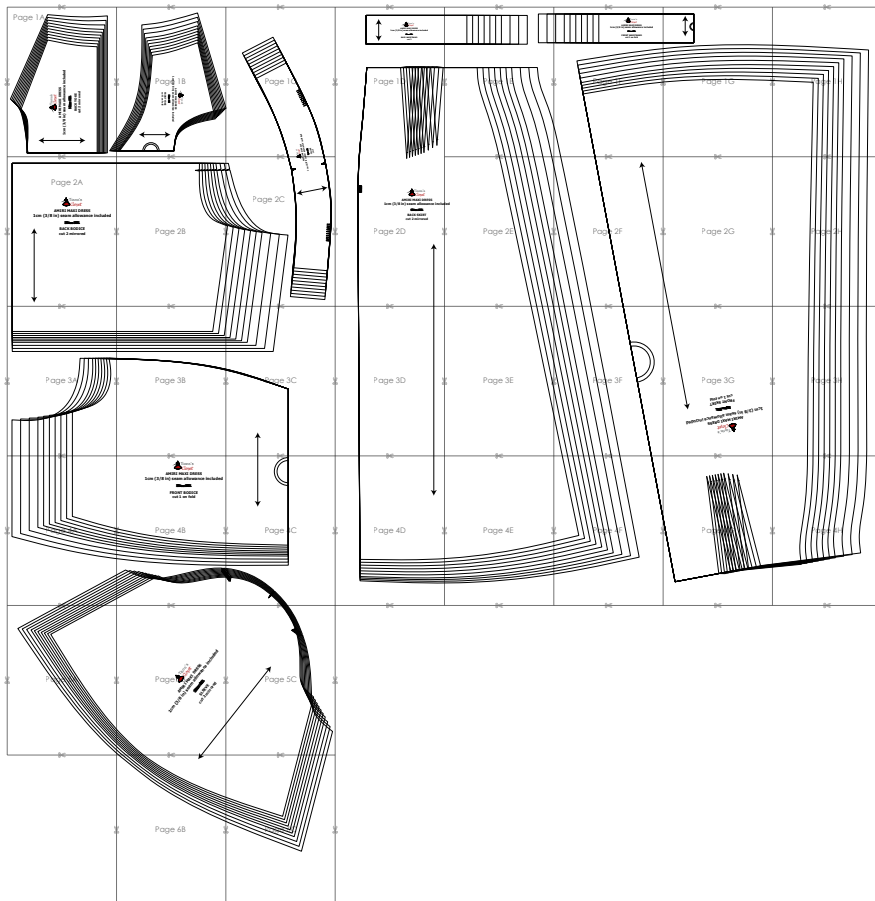
SIZE TABLE
TIANA'S CLOSET SEWING PATTERNS

Size code	XXS	XS	S	M	L	XL	XXL	3XL	4XL	5XL
Bust	centimeter	80	84	88	92	96	100	104	110	122
	inch	31.5	33.1	34.6	36.2	37.8	39.4	40.9	43.3	47.2
Waist	centimeter	60	64	68	72	76	80	84	90	102
	inch	23.6	25.2	26.8	28.3	29.9	31.5	33.1	35.4	40.2
Hip	centimeter	88	92	96	100	104	108	112	118	130
	inch	34.6	36.2	37.8	39.4	40.9	42.5	44.1	46.5	52.0

PRINTING INSTRUCTIONS

- Tiana's Closet sewing patterns are made in Layered PDF format, which means all sizes are saved in one file and can be shown or hidden. It is recommended to use Adobe Acrobat Reader (paid version on Mac OS, free on Windows) or Foxit PDF Reader (free, works on Windows only) to read the file correctly. In order to choose the desired size(s), go to Layers tab of your PDF reader, uncheck all boxes except for the desired size(s) and the box Print for all sizes.
- When printing the pattern, go to Print settings, in the tab Scale choose Custom scale: 100% (or Scaling: None or Actual Size) to print true to size. Note: some computers print smaller than true size even when you choose 100% scale, so you will have to adjust the scale to a little larger than 100% and measure the test square until you get the true size.
- The test square is 10 centimeters (horizontally) and 4 inches (vertically).
- Always print the first page of the file and measure to avoid waste of paper.
- After printing the pattern, cut the pages along the lines with scissors icon, align and tape the pages according to their sequences. For example, page 1A is taped to page 1B in a row, and page 1A is taped to page 2A in a column. Please see the image below to see how the pages line up.
- You can find photo instruction for printing sewing patterns on Tiana's Closet website: <https://tianas-closet.com/index.php/how-to-print-tianas-closet-patterns/>

AMIRI MAXI DRESS



For more ideas and free sewing patterns, visit <http://tianas-closet.com>

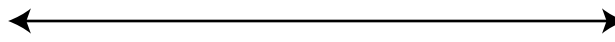


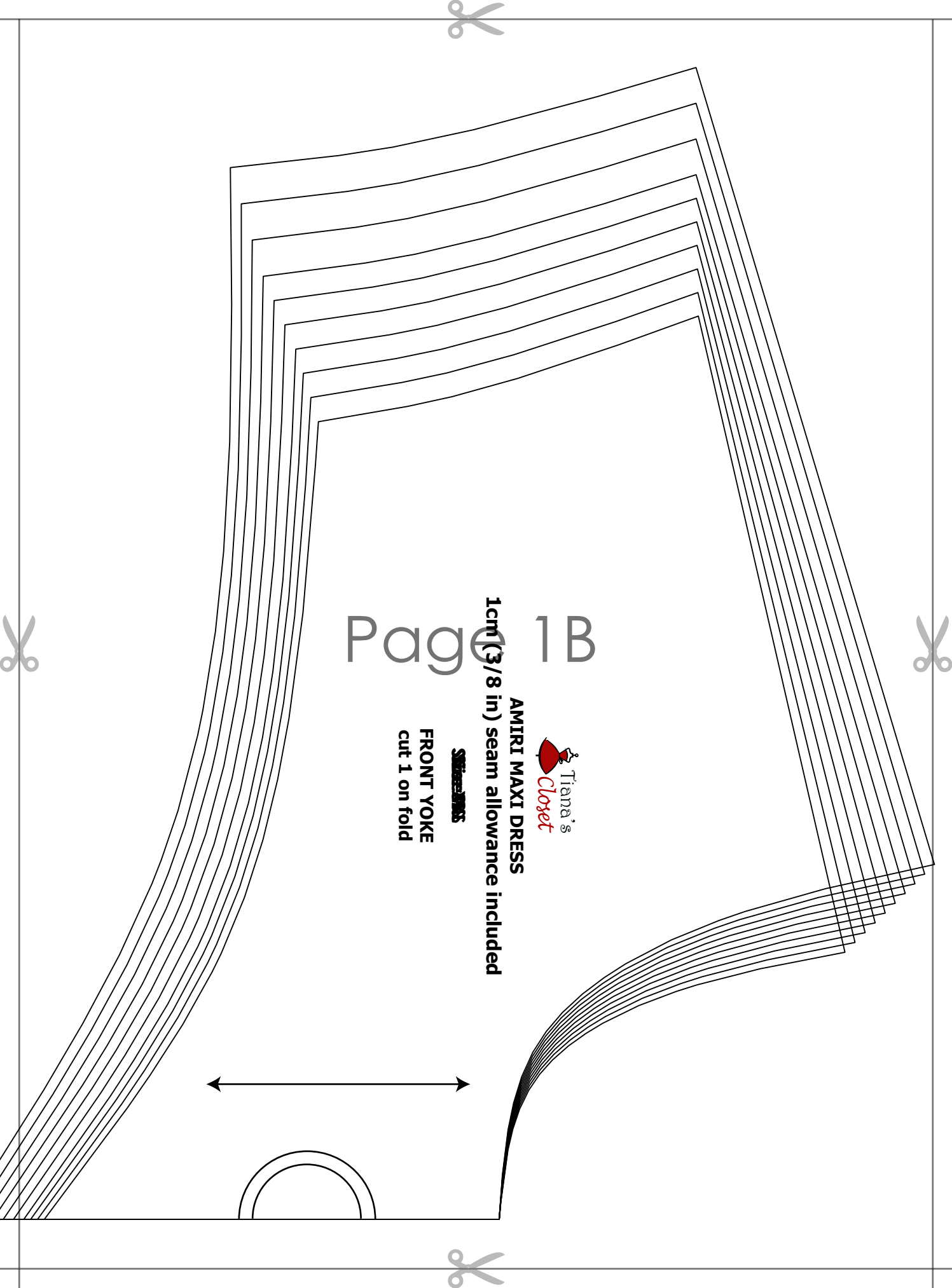
AMIRI MAXI DRESS

1cm (3/8 in) seam allowance included

SHIRAZ

BACK YOKE
cut 2 mirrored





Page 1B

1cm (3/8 in) seam allowance included

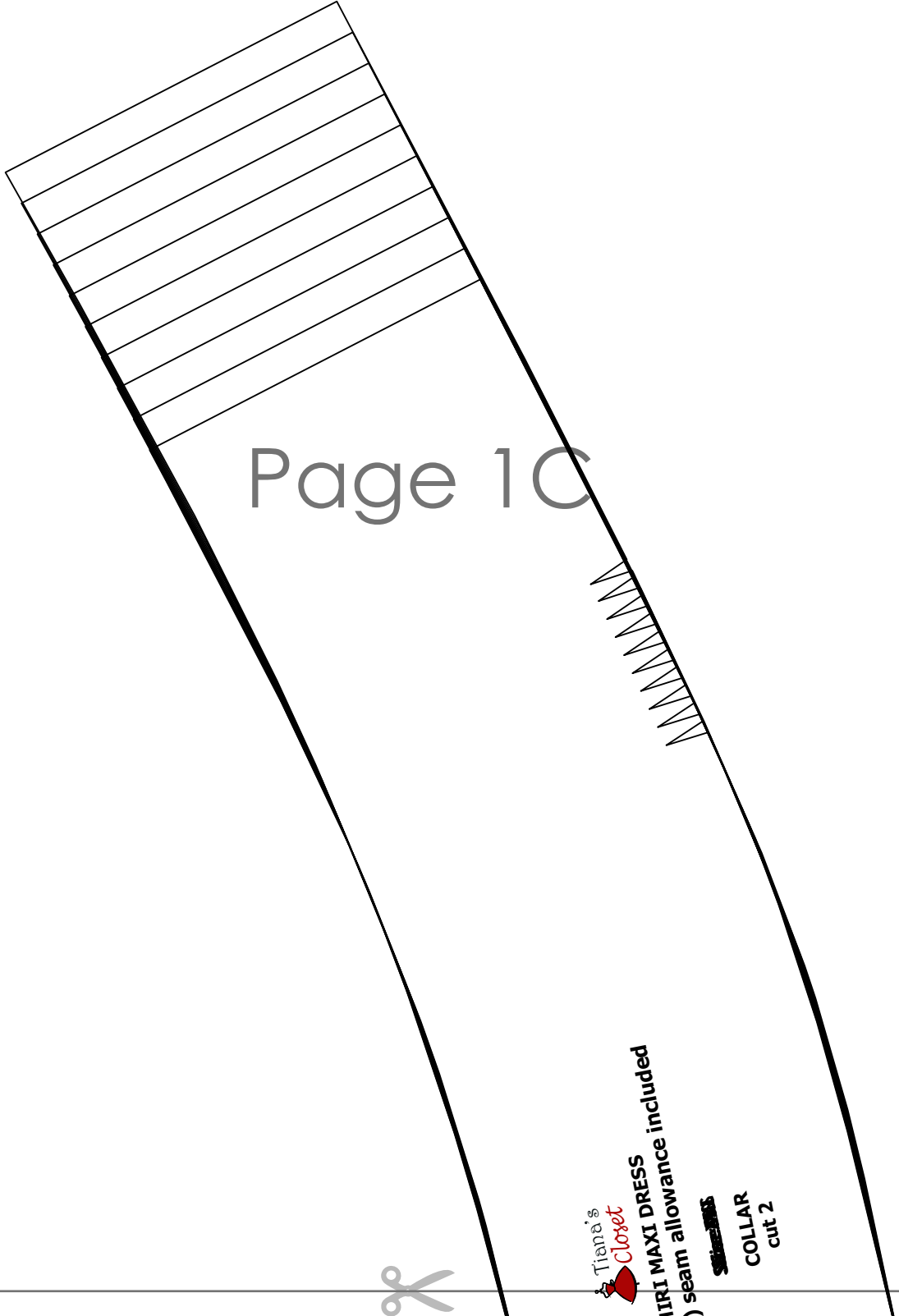


AMIRI MAXI DRESS

~~STANDARD DRESS~~

FRONT YOKE
cut 1 on fold





Page 1C

Tiana's Closet
TIARI MAXI DRESS
) seam allowance included
~~seam allowance included~~
COLLAR
cut 2



AMIRI MAXI DRESS

1cm (3/8 in) seam allowance included

~~Size: XS~~

**BACK WAISTBAND
cut 2**

Page 1D





--	--	--	--	--	--	--	--	--	--	--

--	--	--

Page 1E





AMIRI MAXI DRESS

1cm (3/8 in) seam allowance included

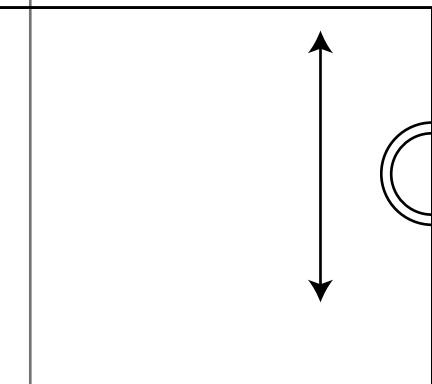
~~Size 22~~

FRONT WAISTBAND

cut 1 on fold

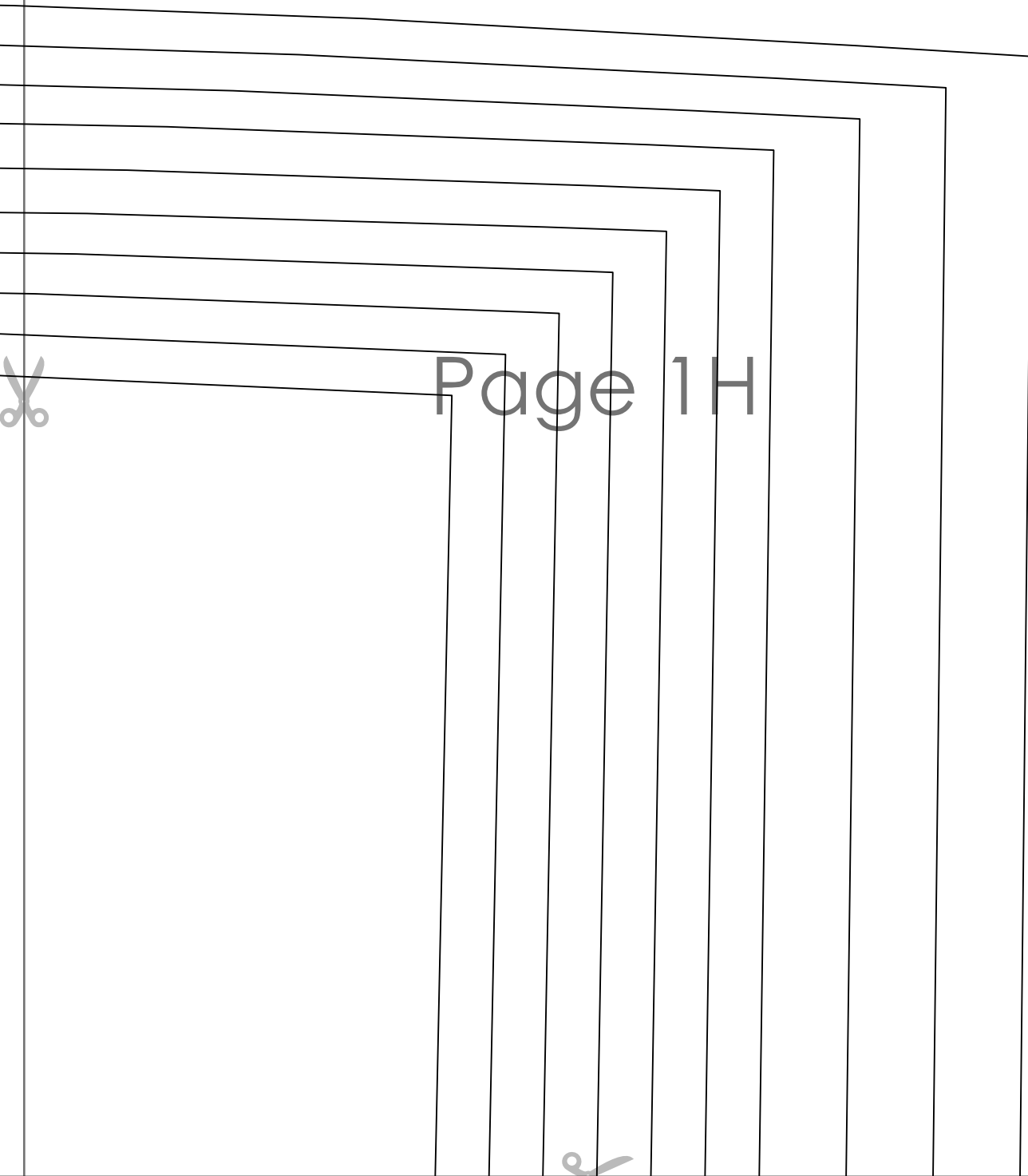
Page 1F





Page 1G





Page 1H



Page 2A



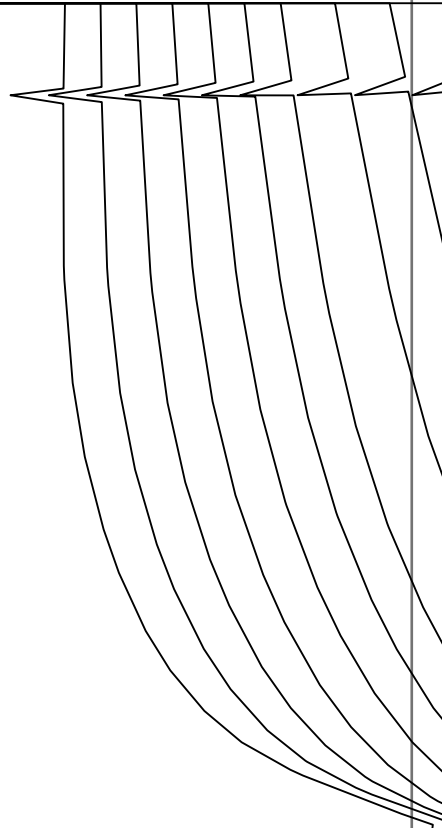
AMIRI MAXI DRESS

1cm (3/8 in) seam allowance included

~~Size: XS~~

BACK BODICE
cut 2 mirrored

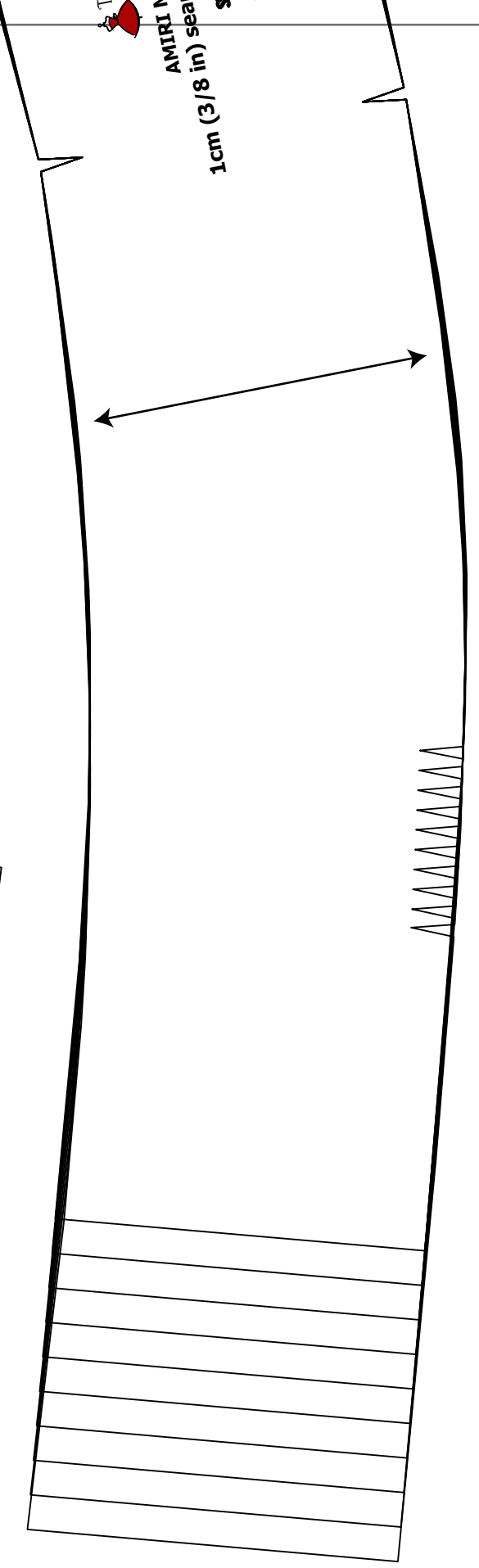
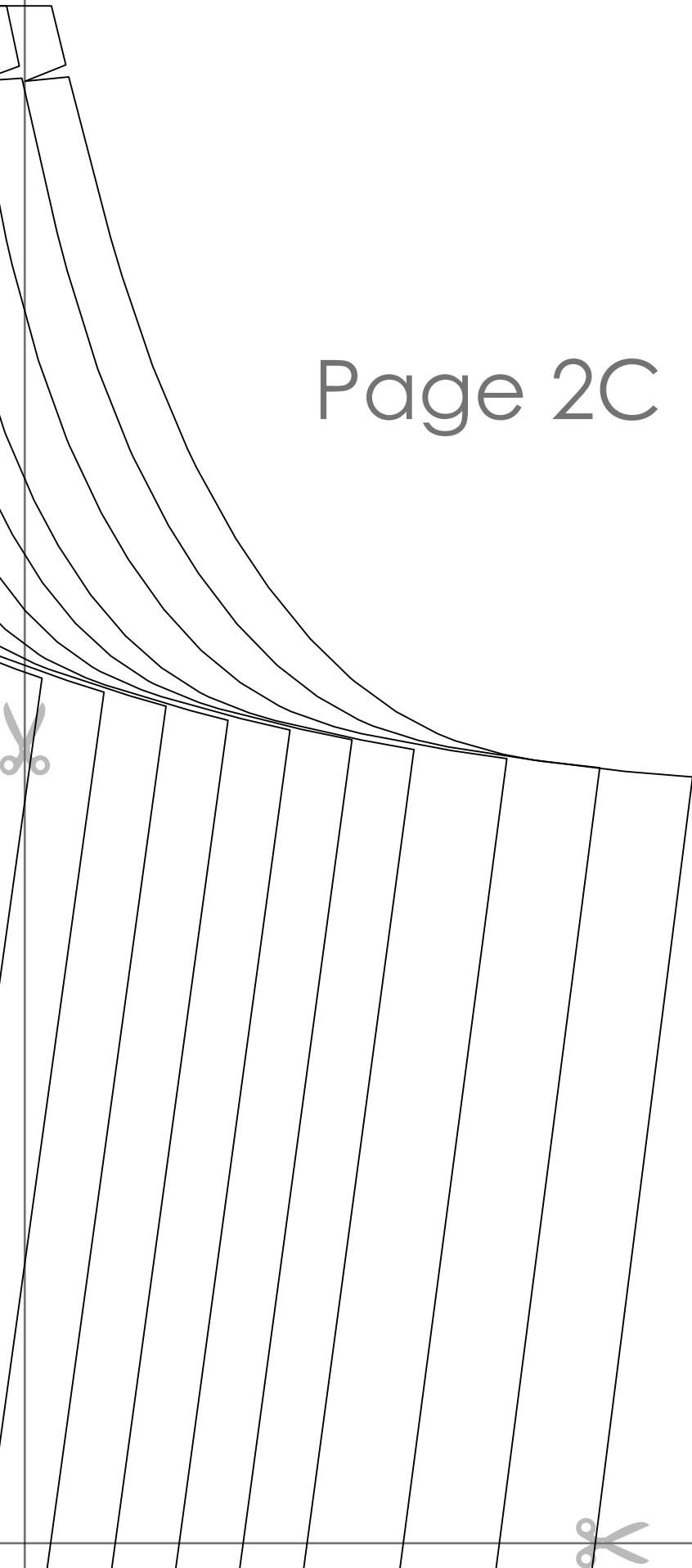




Page 2B



Page 2C



AMIRI N
1cm (3/8 in) sea





AMIRI MAXI DRESS
1cm (3/8 in) seam allowance include

~~Size: M~~

BACK SKIRT
cut 2 mirrored

Page 2D



uded

Page 2E





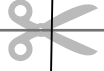
Page 2F





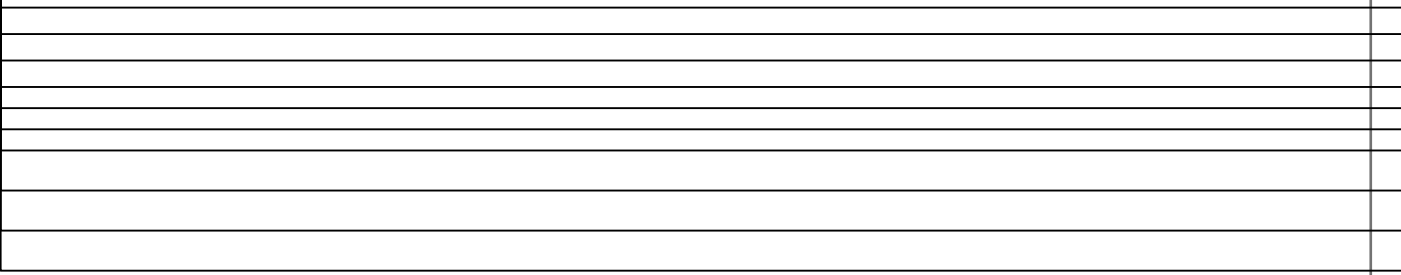
Page 2G



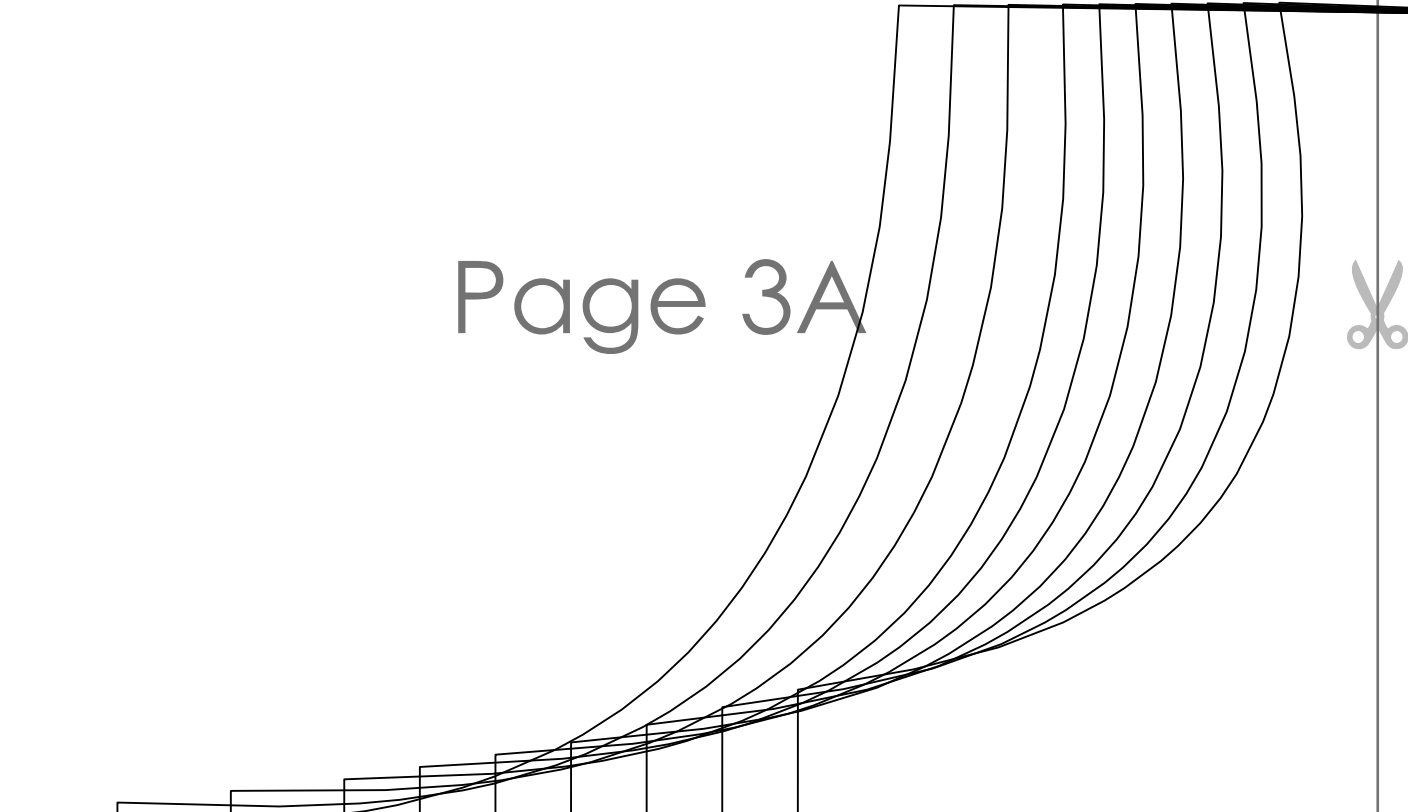


Page 2H





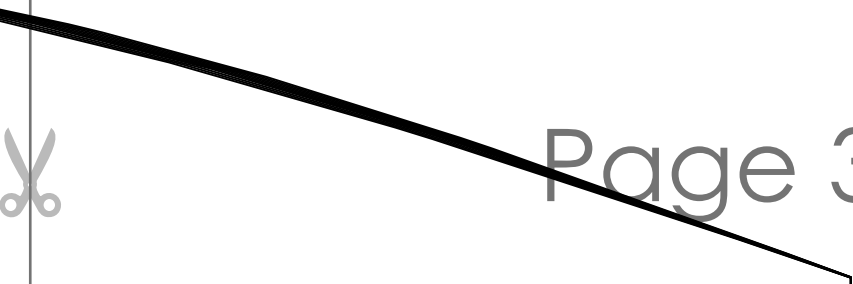
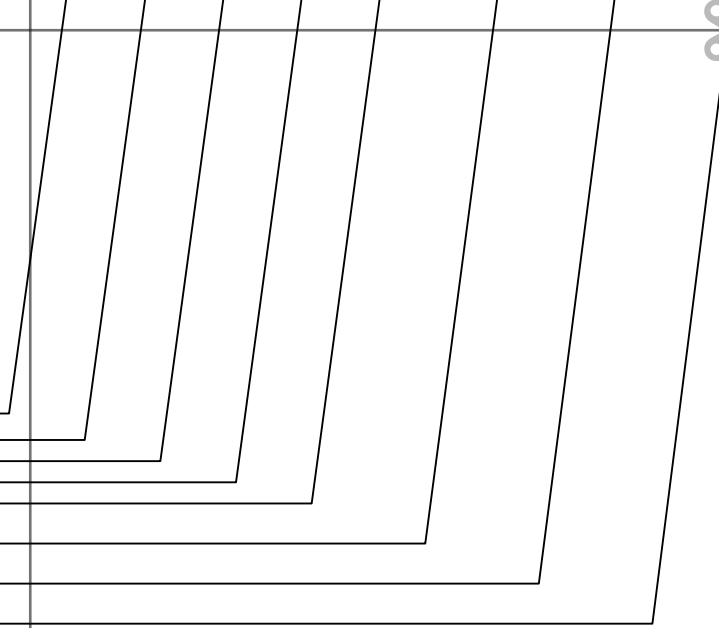
Page 3A





Page 3B





Page 3C





Page 3D



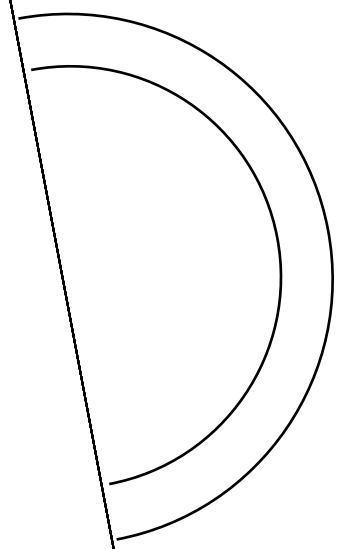


Page 3E





Page 3F



Page 3G

FRONT SKIRT
cut 1 on fold

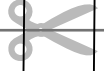
~~SKIRT~~

AMIRI MAXI DRESS
1cm (3/8 in) seam allowance included



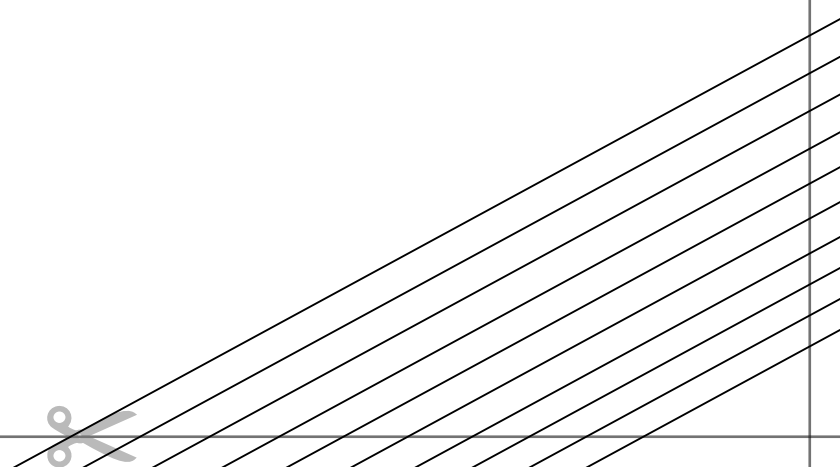


Page 3H





Page 4A



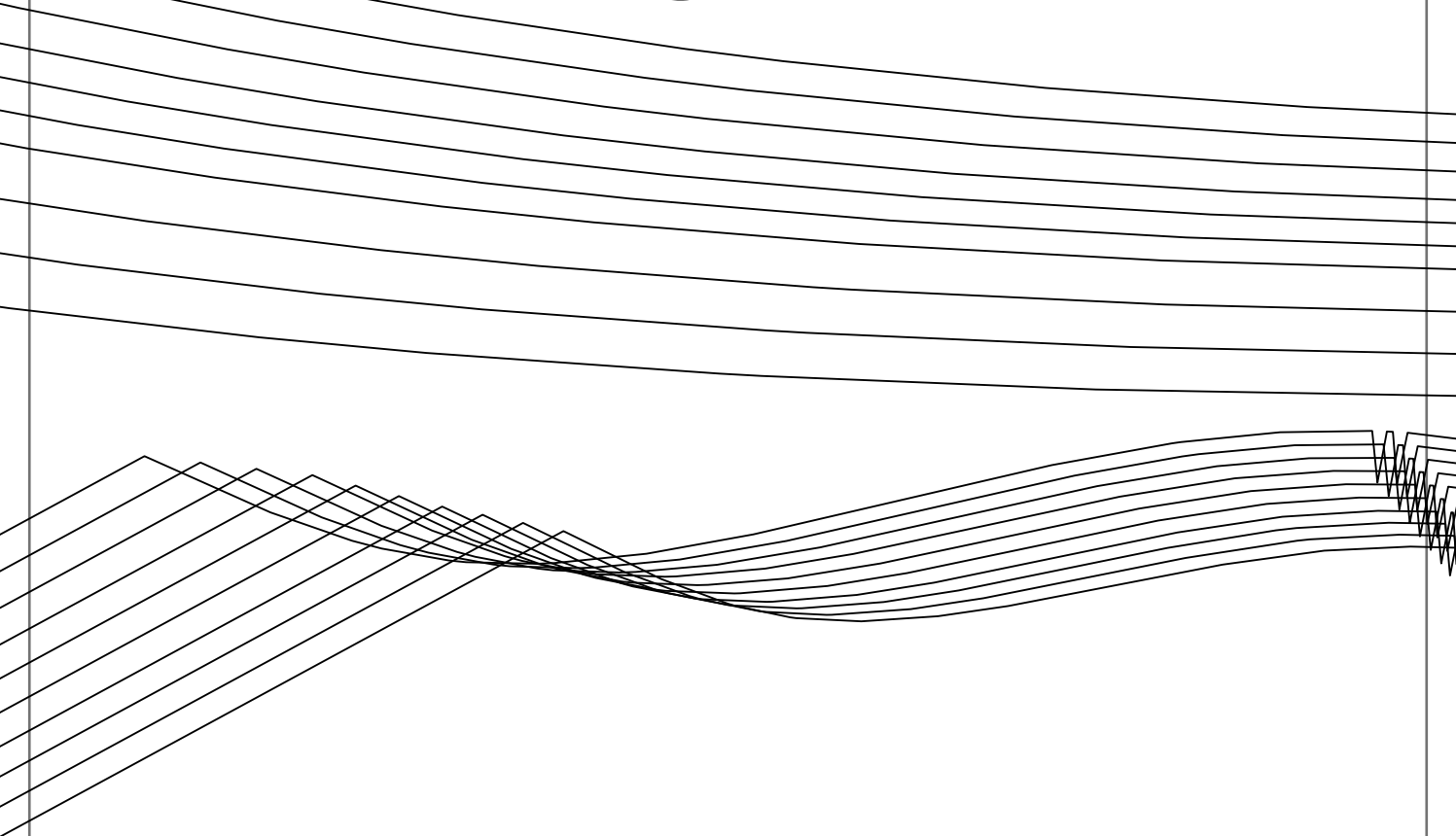


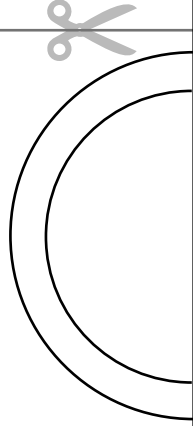
AMIRI MAXI DRESS
1cm (3/8 in) seam allowance included

~~Size M~~

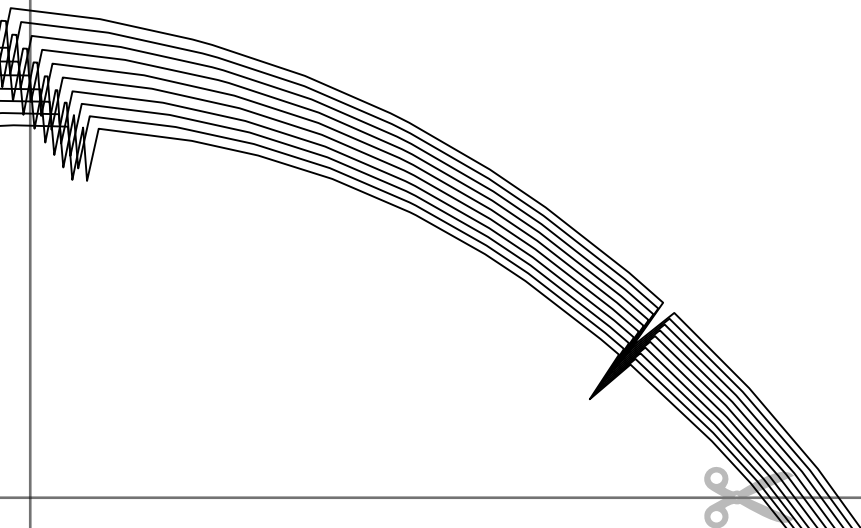
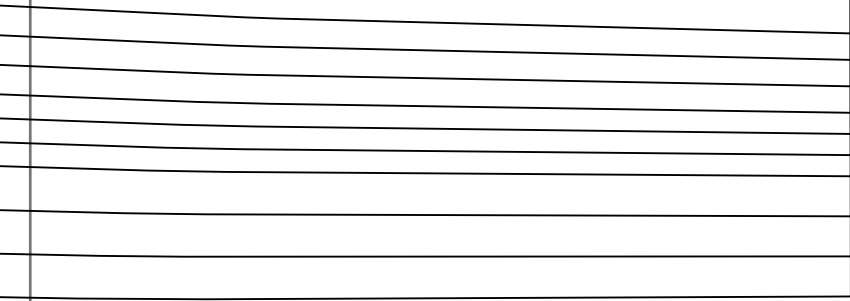
FRONT BODICE
cut 1 on fold

Page 4B





Page 4C





Page 4D

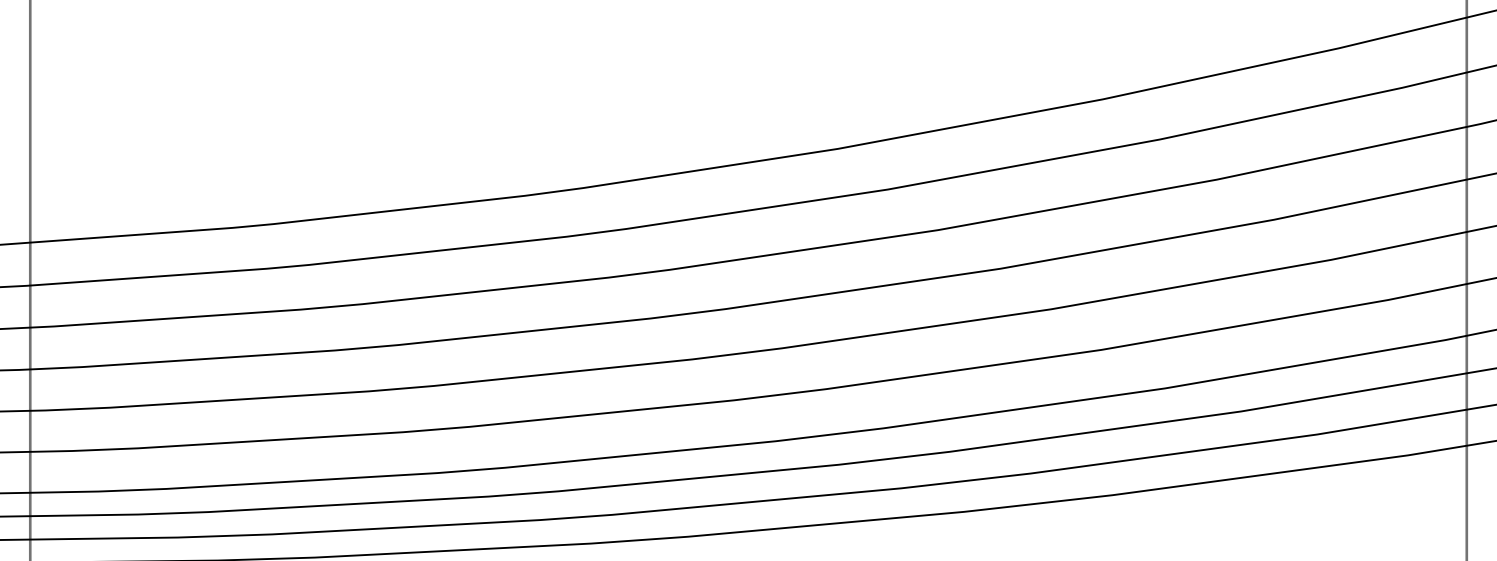


Handwriting practice lines consisting of seven horizontal lines with a wavy, undulating pattern.





Page 4E

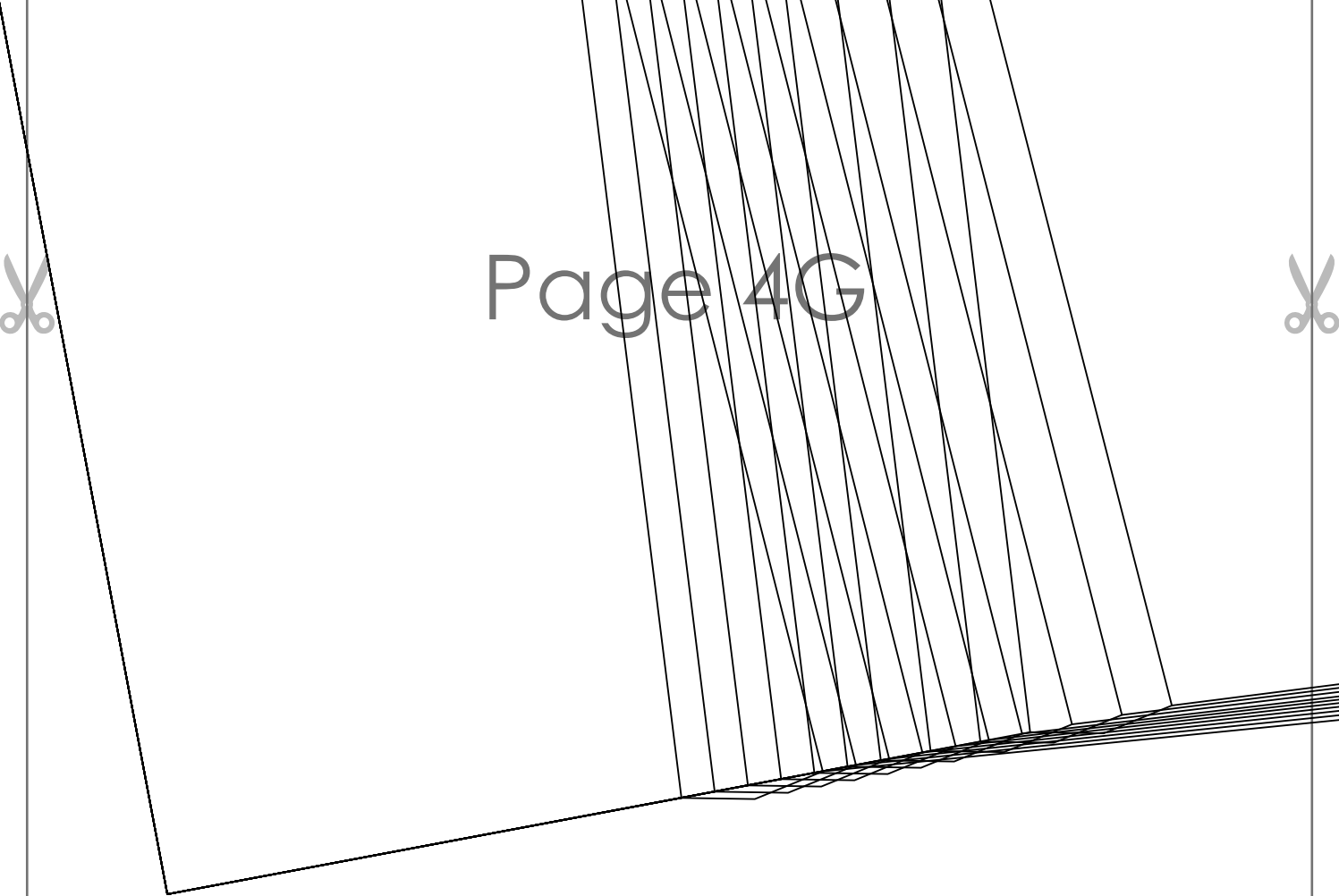


Page 4F



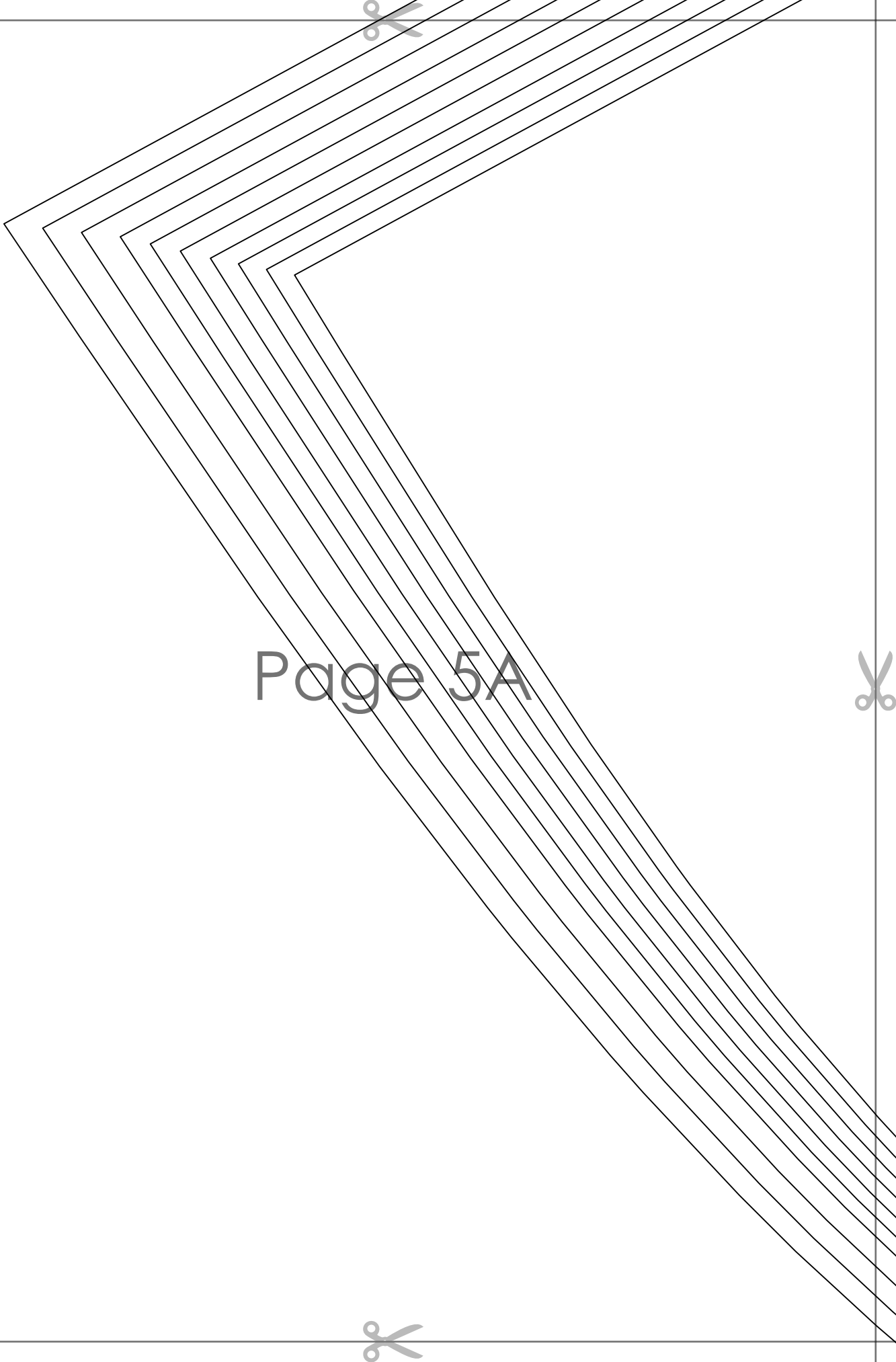


Page 4G

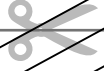


Page 4H





Page 5A



Page 3

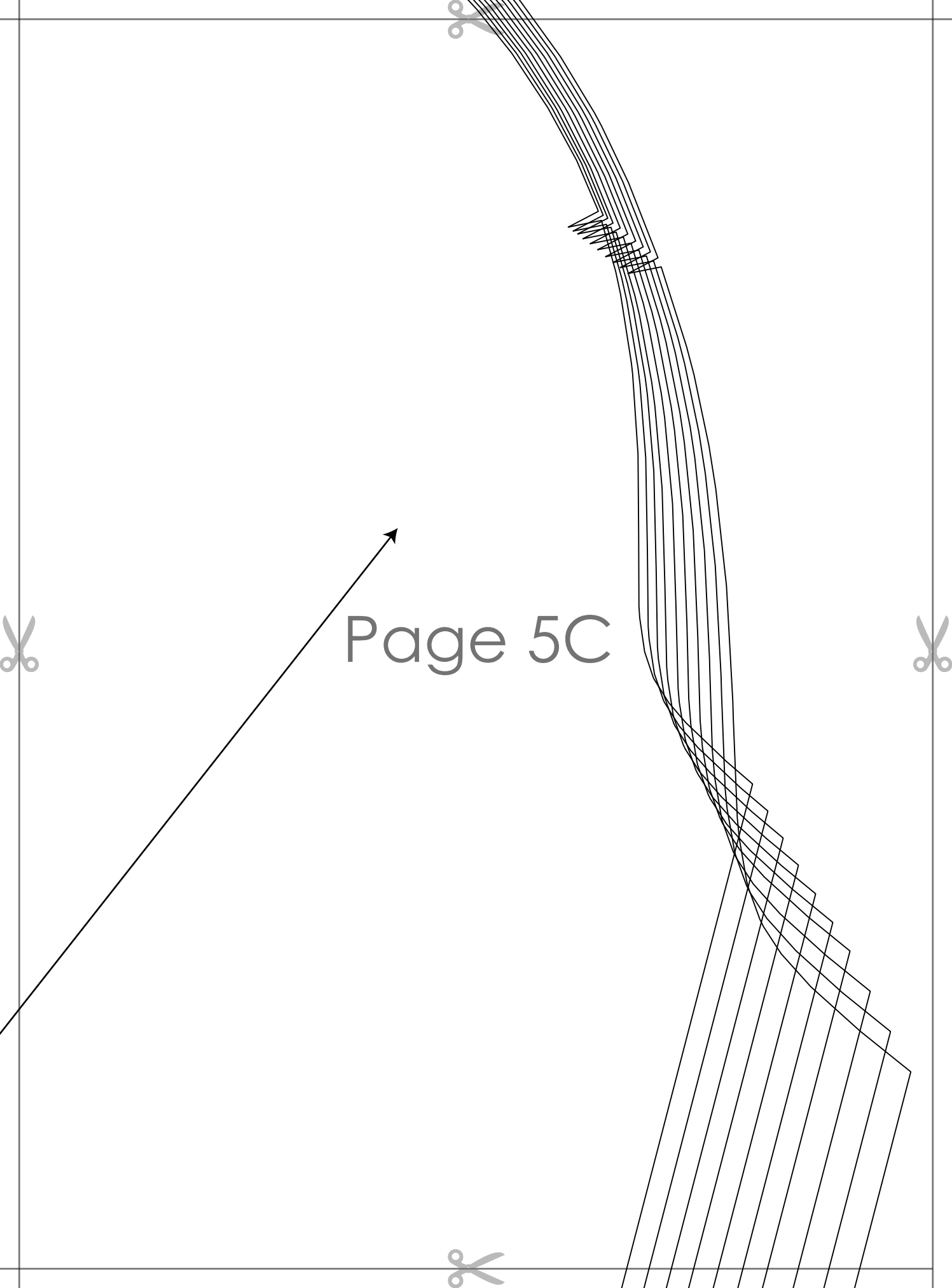


1cm (3/8 in) seam allowance included

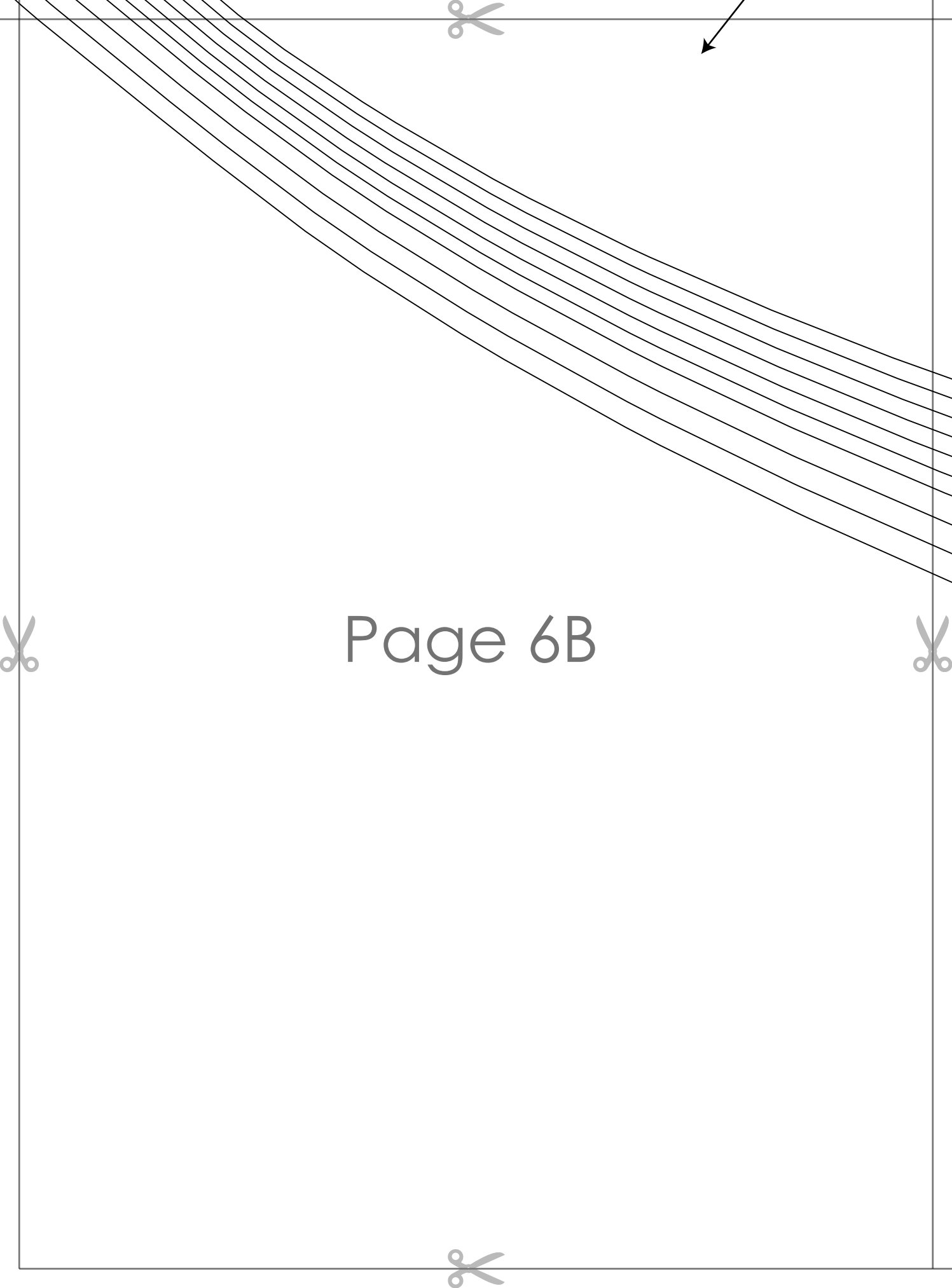
~~Sleeves~~

SLEEVE

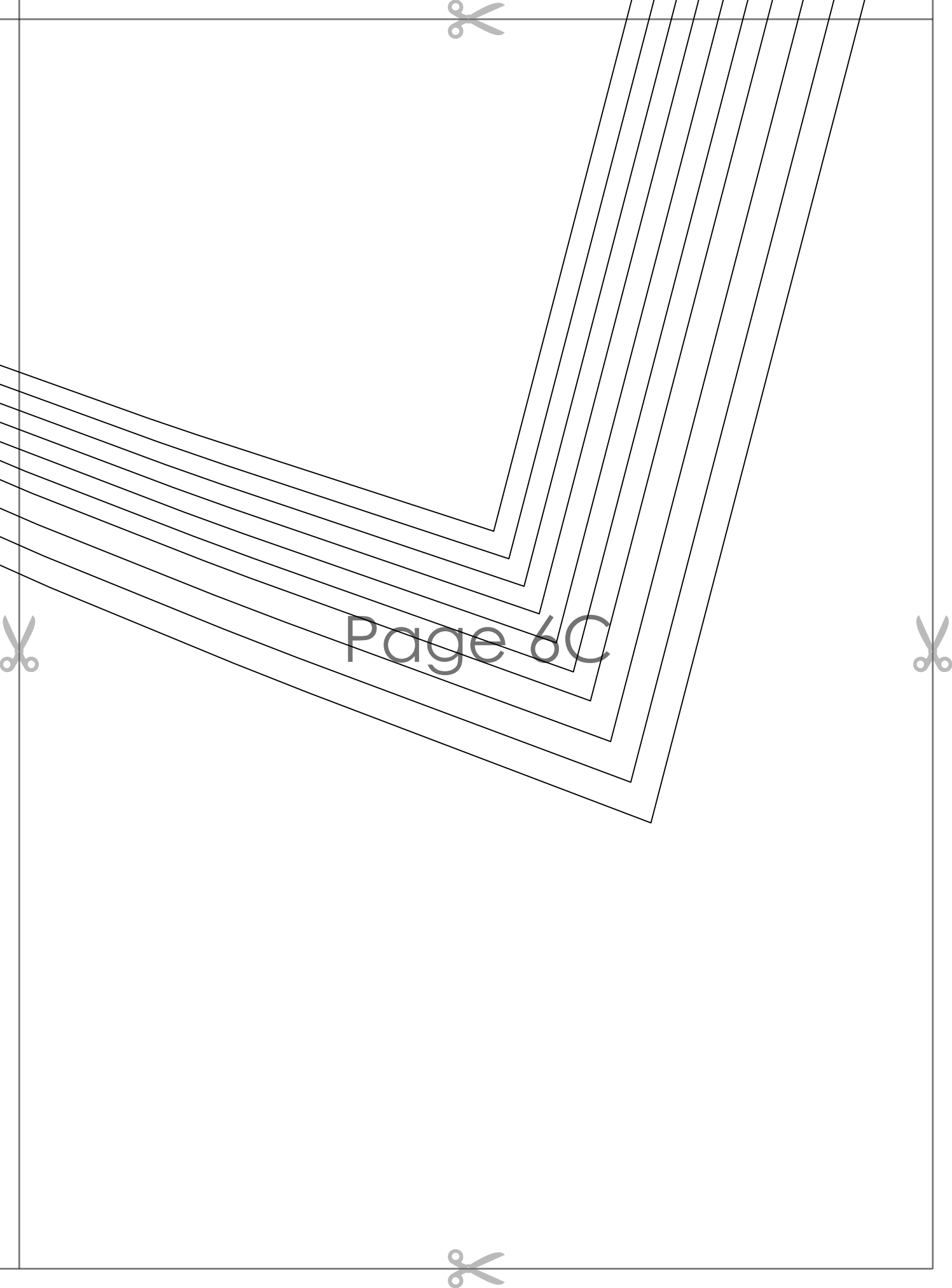
cut 2 mirrored



Page 5C



Page 6B



Page 6C