

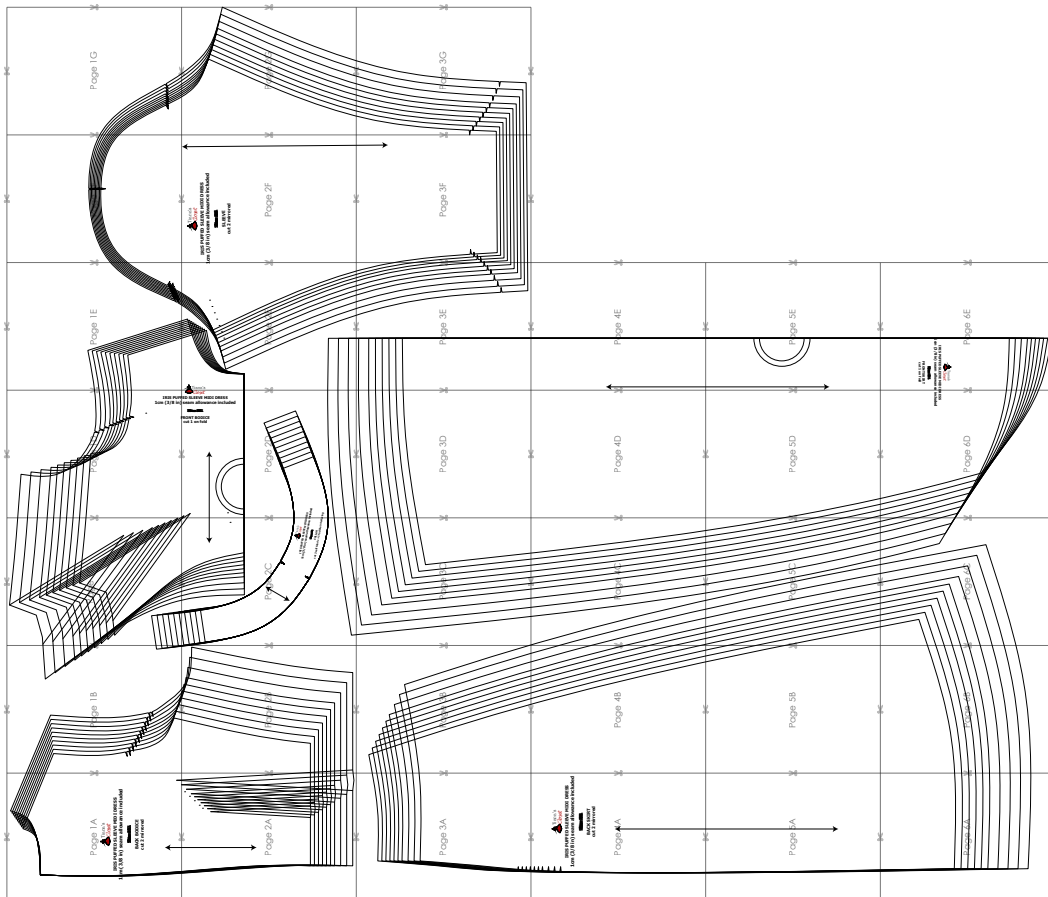
SIZE TABLE
TIANA'S CLOSET SEWING PATTERNS

Size code	XXS	XS	S	M	L	XL	XXL	3XL	4XL	5XL	
Bust	centimeter	80	84	88	92	96	100	104	110	116	122
	inch	31.5	33.1	34.6	36.2	37.8	39.4	40.9	43.3	45.7	47.2
Waist	centimeter	60	64	68	72	76	80	84	90	96	102
	inch	23.6	25.2	26.8	28.3	29.9	31.5	33.1	35.4	37.8	40.2
Hip	centimeter	88	92	96	100	104	108	112	118	124	130
	inch	34.6	36.2	37.8	39.4	40.9	42.5	44.1	46.5	49.6	52.0

PRINTING INSTRUCTIONS

- Tiana's Closet sewing patterns are made in Layered PDF format, which means all sizes are saved in one file and can be shown or hidden. It is recommended to use Adobe Acrobat Reader (paid version on Mac OS, free on Windows) or Foxit PDF Reader (free, works on Windows only) to read the file correctly. In order to choose the desired size(s), go to Layers tab of your PDF reader, uncheck all boxes except for the desired size(s) and the box Print for all sizes.
- When printing the pattern, go to Print settings, in the tab Scale choose Custom scale: 100% (or Scaling: None or Actual Size) to print true to size. Note: some computers print smaller than true size even when you choose 100% scale, so you will have to adjust the scale to a little larger than 100% and measure the test square until you get the true size.
- The test square is 10 centimeters (horizontally) and 4 inches (vertically).
- Always print the first page of the file and measure to avoid waste of paper.
- After printing the pattern, cut the pages along the lines with scissors icon, align and tape the pages according to their sequences. For example, page 1A is taped to page 1B in a row, and page 1A is taped to page 2A in a column. Please see the image below to see how the pages line up.
- You can find photo instruction for printing sewing patterns on Tiana's Closet website: <https://tianas-closet.com/index.php/how-to-print-tianas-closet-patterns/>

IRIS PUFFED SLEEVE MIDI DRESS



For more ideas and free sewing patterns, visit <http://tianas-closet.com>



Page 1A

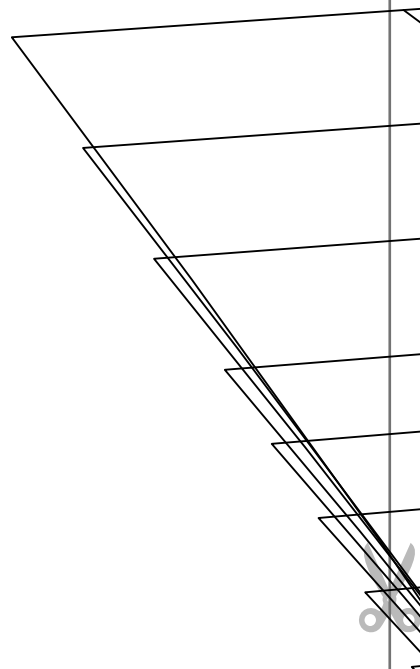
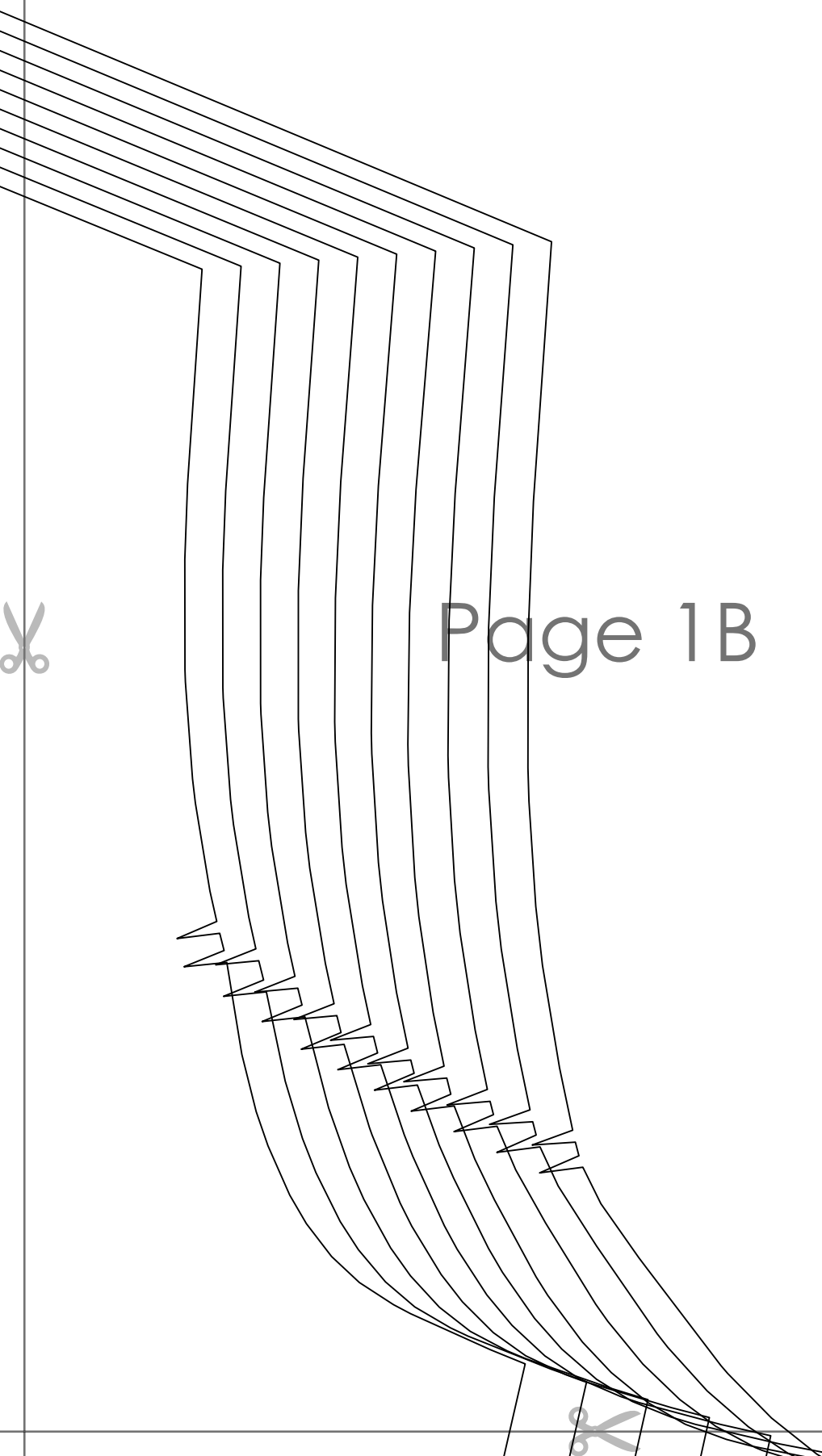


IRIS PUFFED SLEEVE MIDI DRESS
1cm (3/8 in) seam allowance included

~~Size: M~~

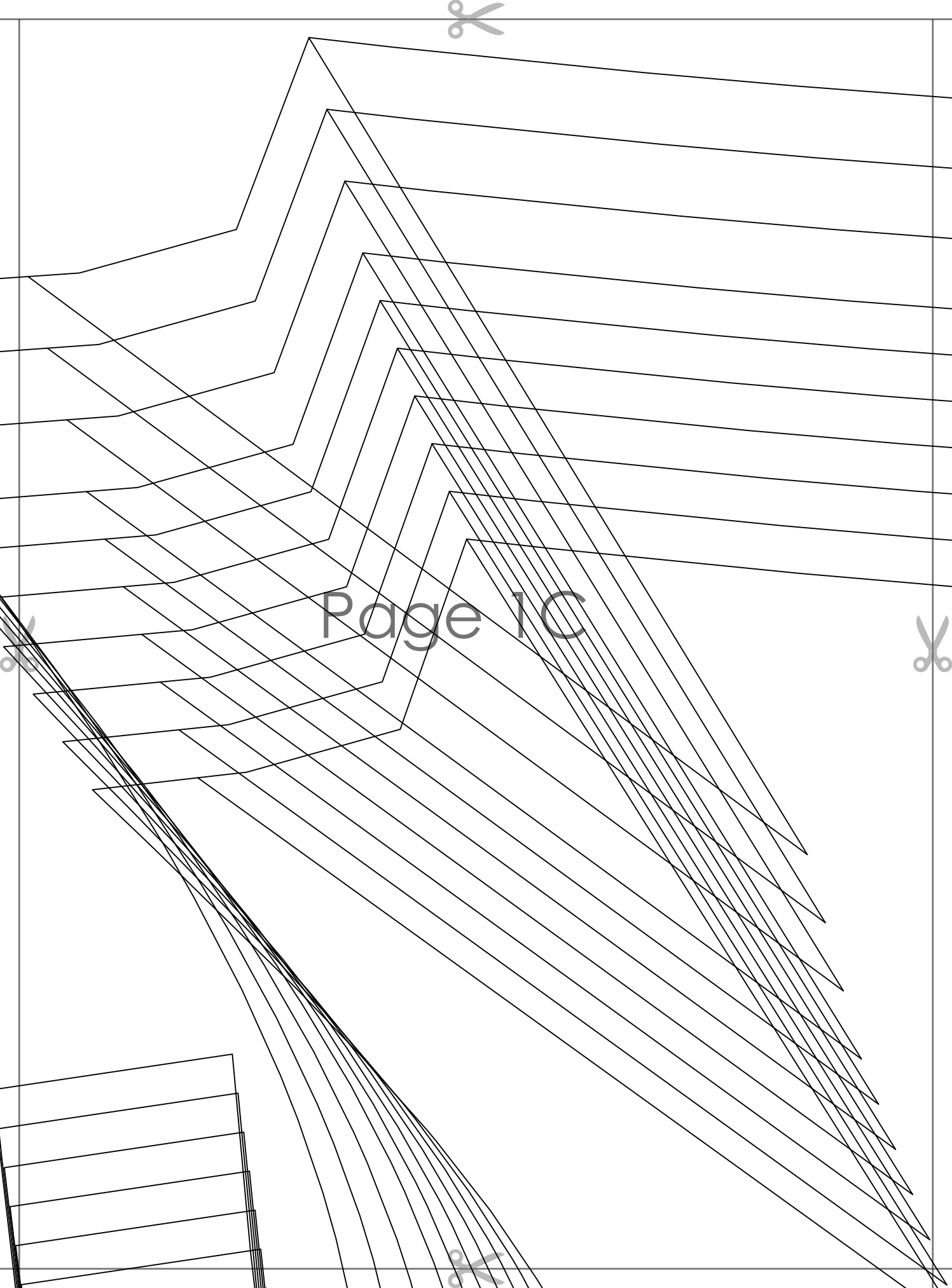
BACK BODICE
cut 2 mirrored



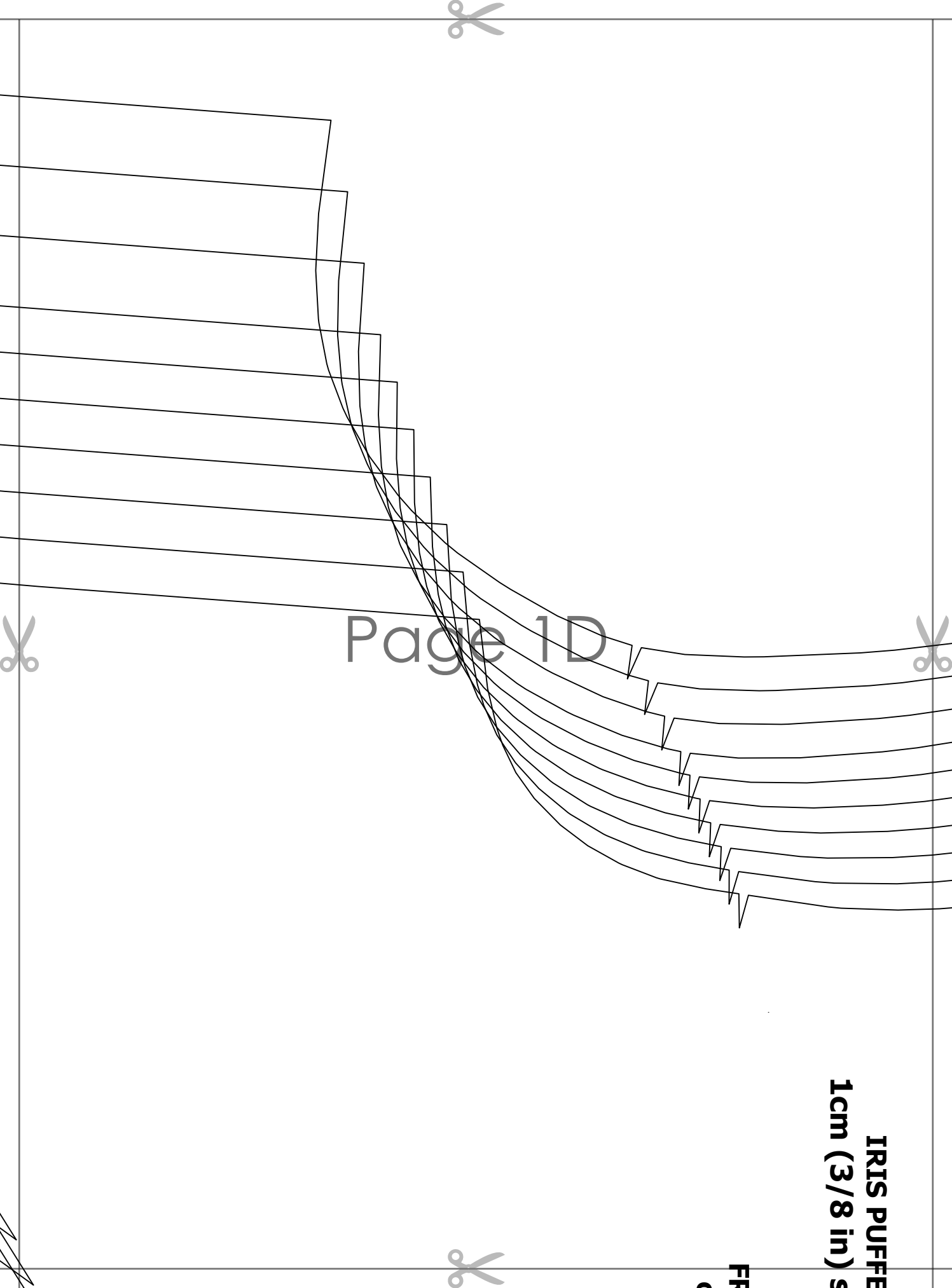


Page 1B





Page 1C



Page 1D

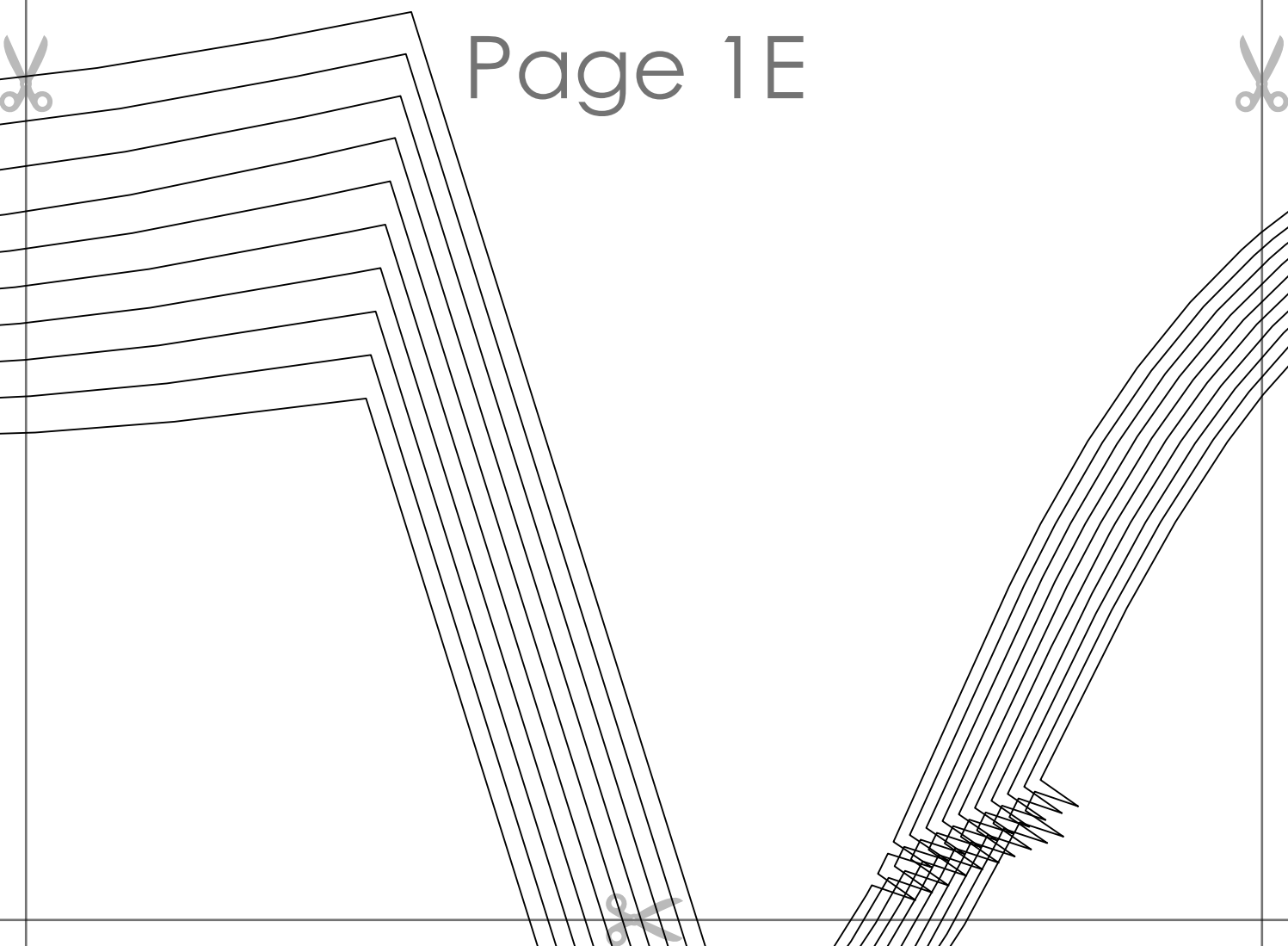
IRIS PUFFE
1cm (3/8 in) s

FR

2



Page 1E



Page 1 F



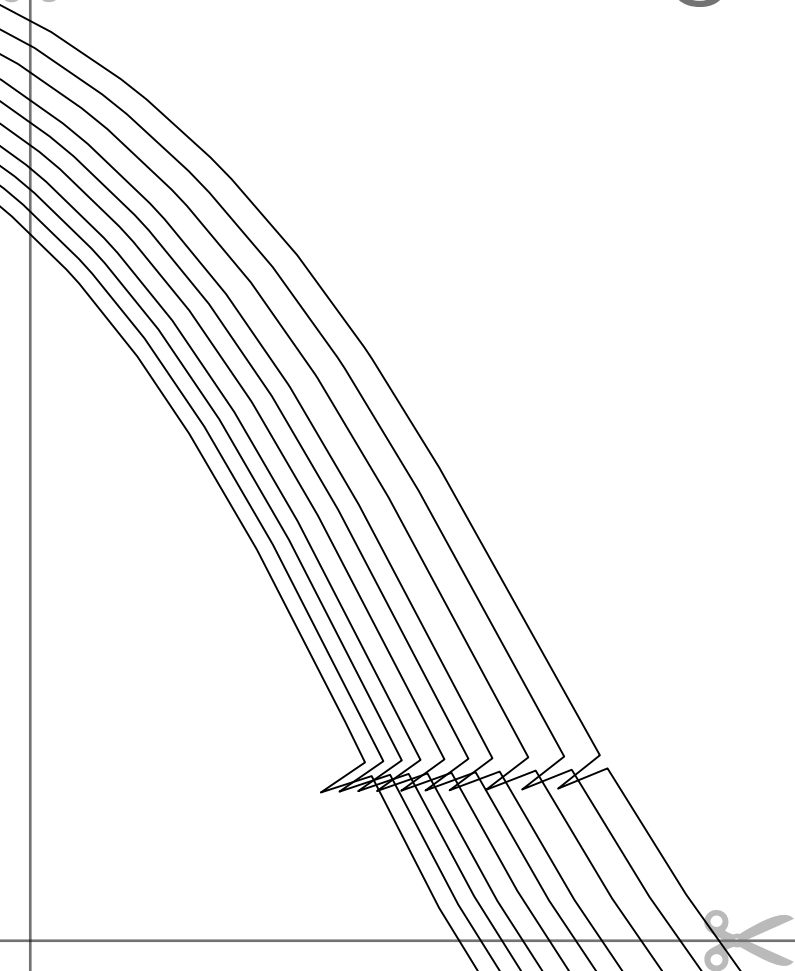
IRIS PUFFED SLEEVE MIDI DRESS
1cm (3/8 in) seam allowance included

~~Size: XS~~

SLEEVE
cut 2 mirrored

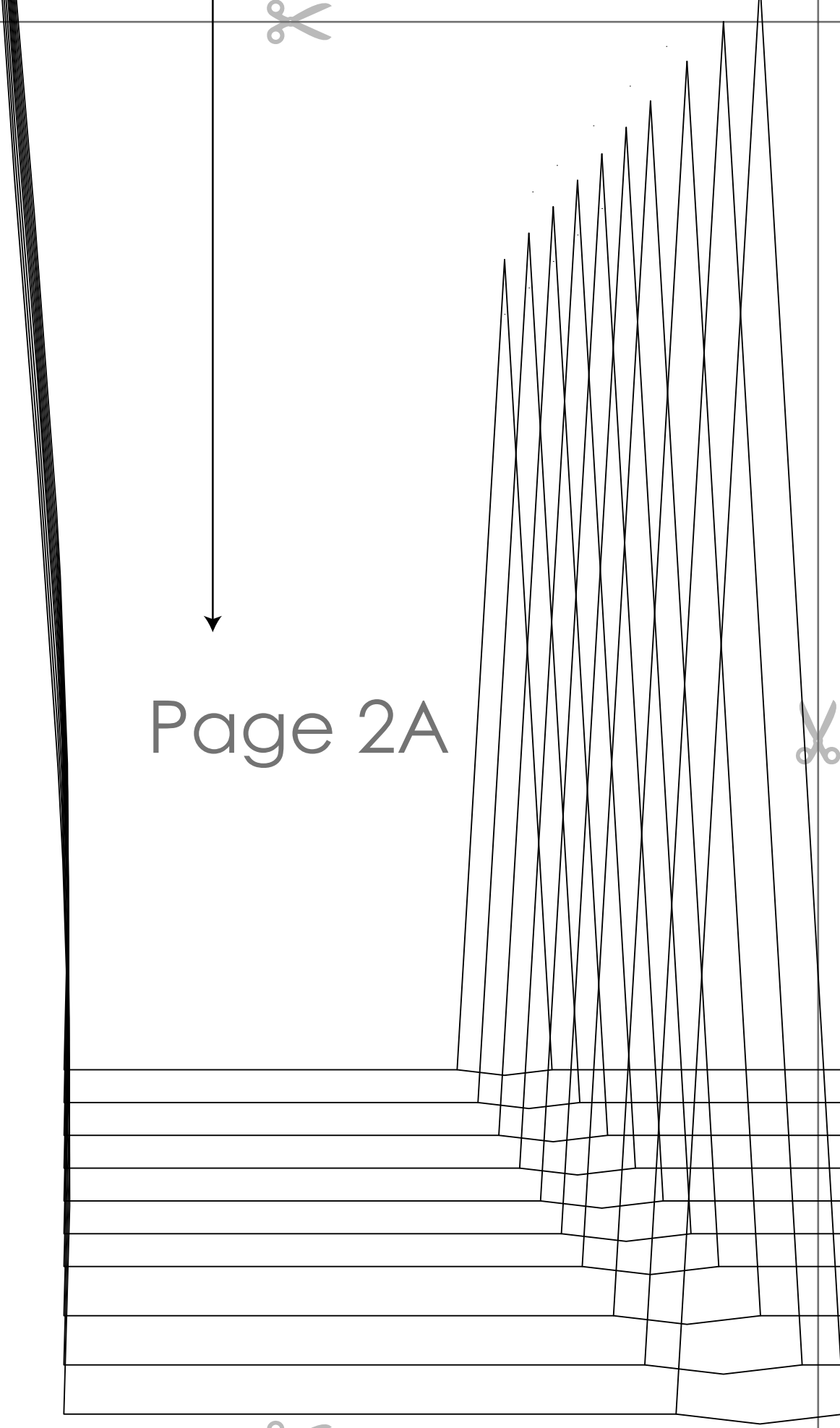


Page 1G





Page 2A



Page 2B



Page 2C



IRIS PUFFED SLEEVE MIDI DRESS
1cm (3/8 in) seam allowance included

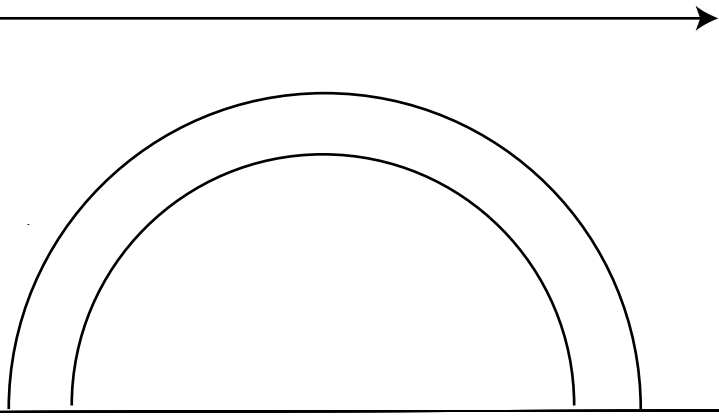
~~Size 10-12~~

COLLAR
cut 2 self fabric + 1 fusible interfacing

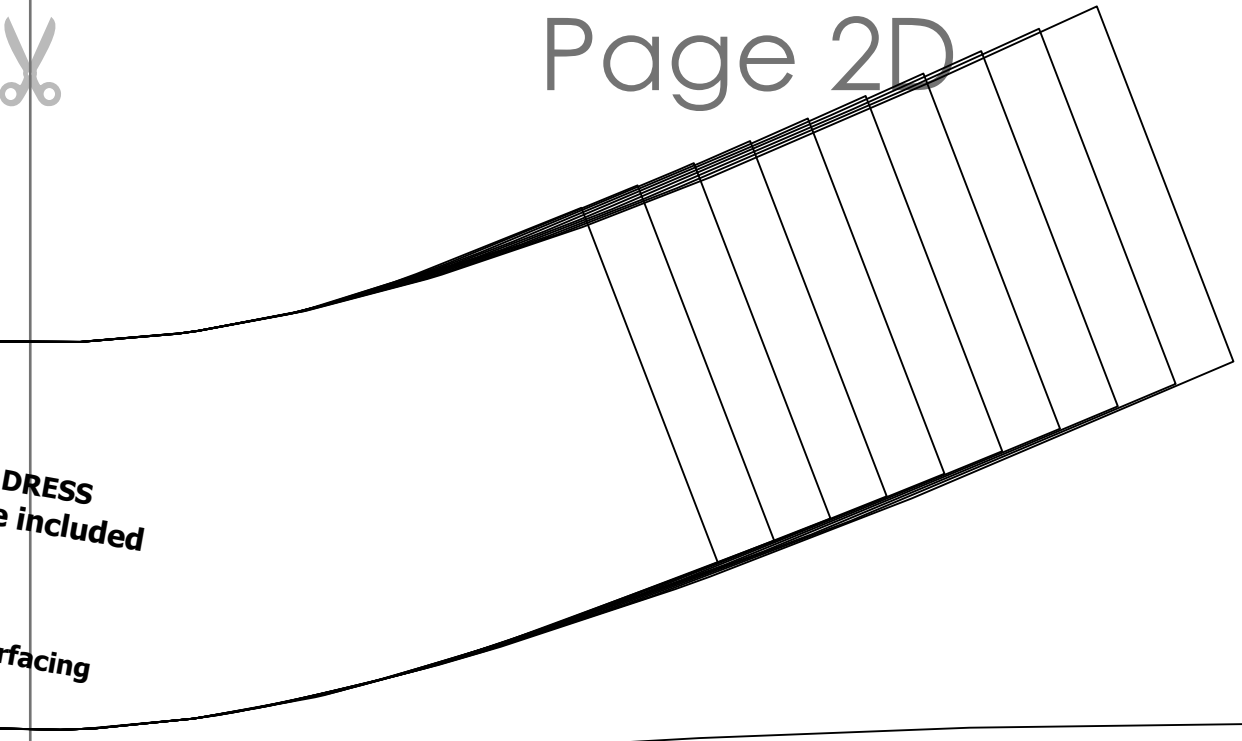
OFFED SLEEVE MIDI DRESS
1) seam allowance included

SIZES

FRONT BODICE
cut 1 on fold



Page 2D



DRESS
seam allowance included

facing

Page 2E



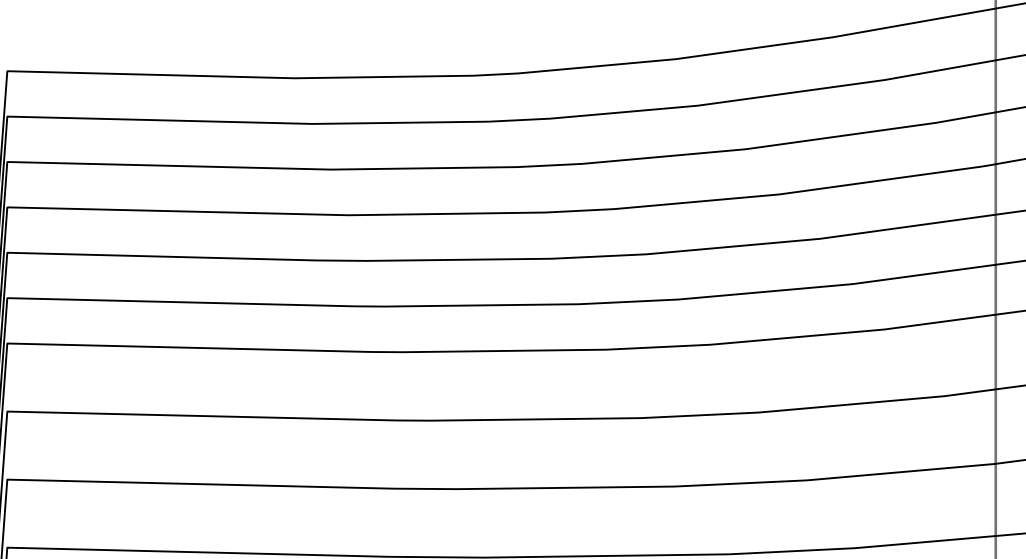


Page 2F

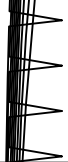


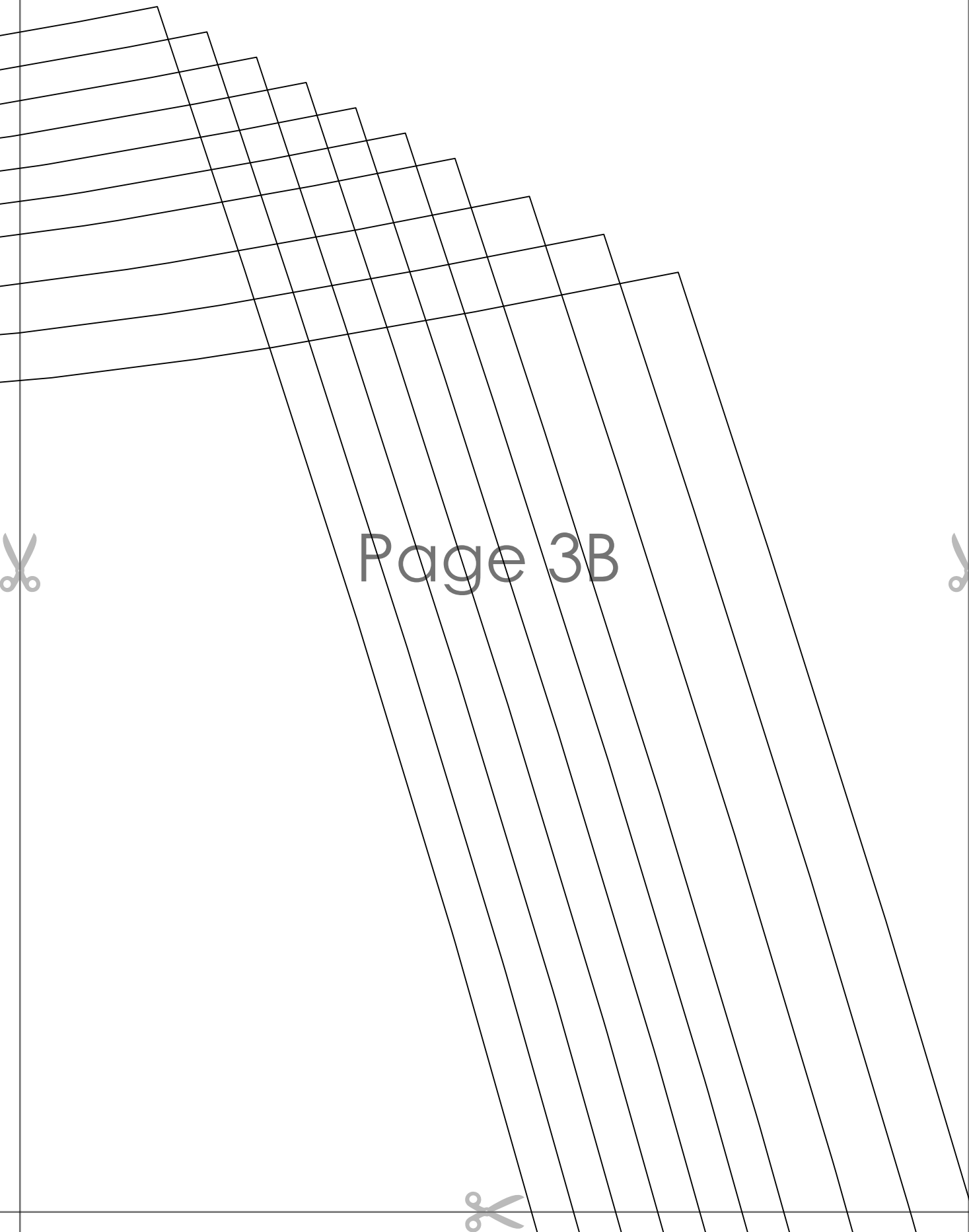
Page 2G





Page 3A





Page 3B





Page 3C



Page 3D



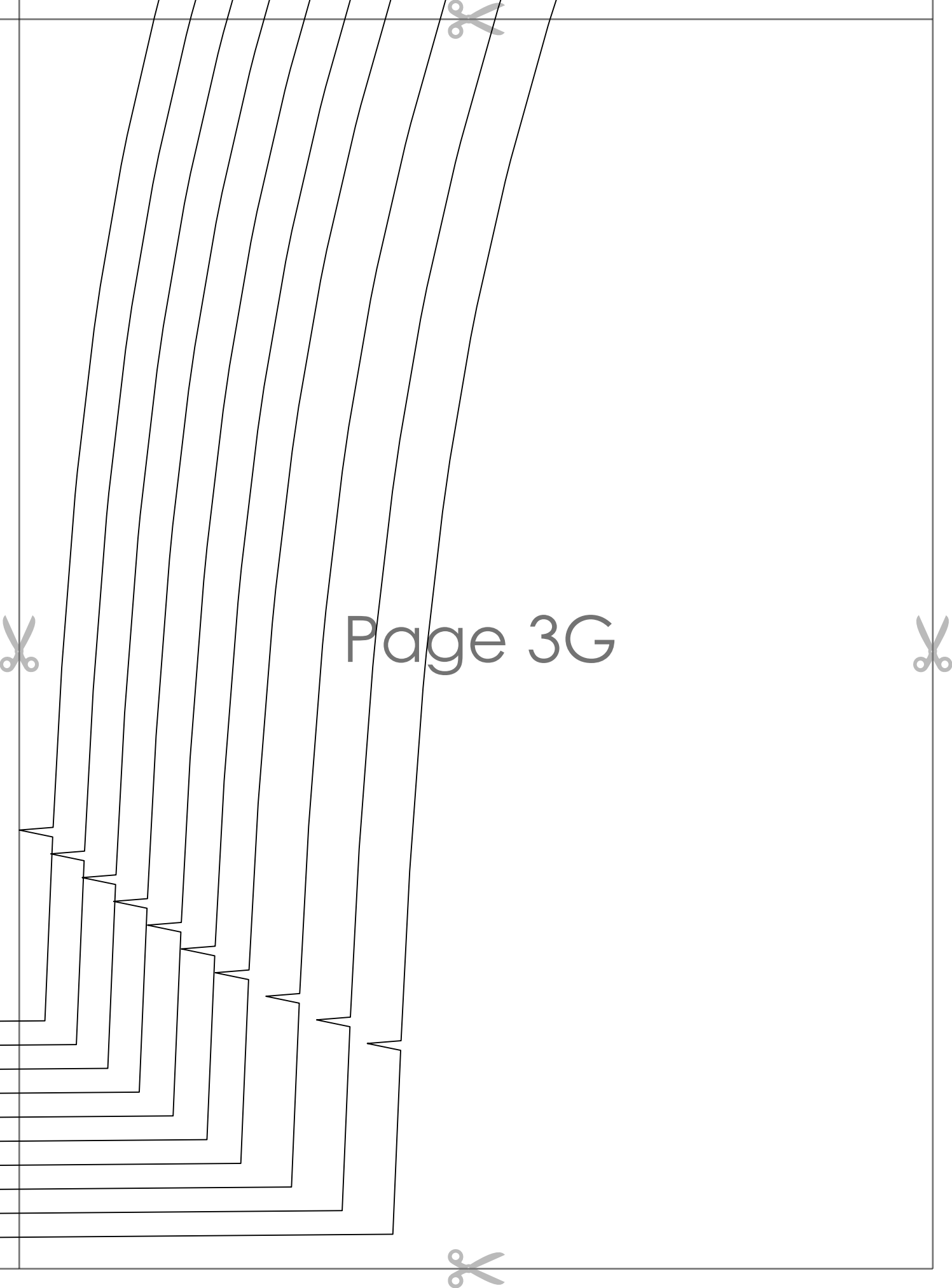


Page 3E



Page 3F





Page 3G





IRIS PUFFED SLEEVE MIDI DRESS
1cm (3/8 in) seam allowance included

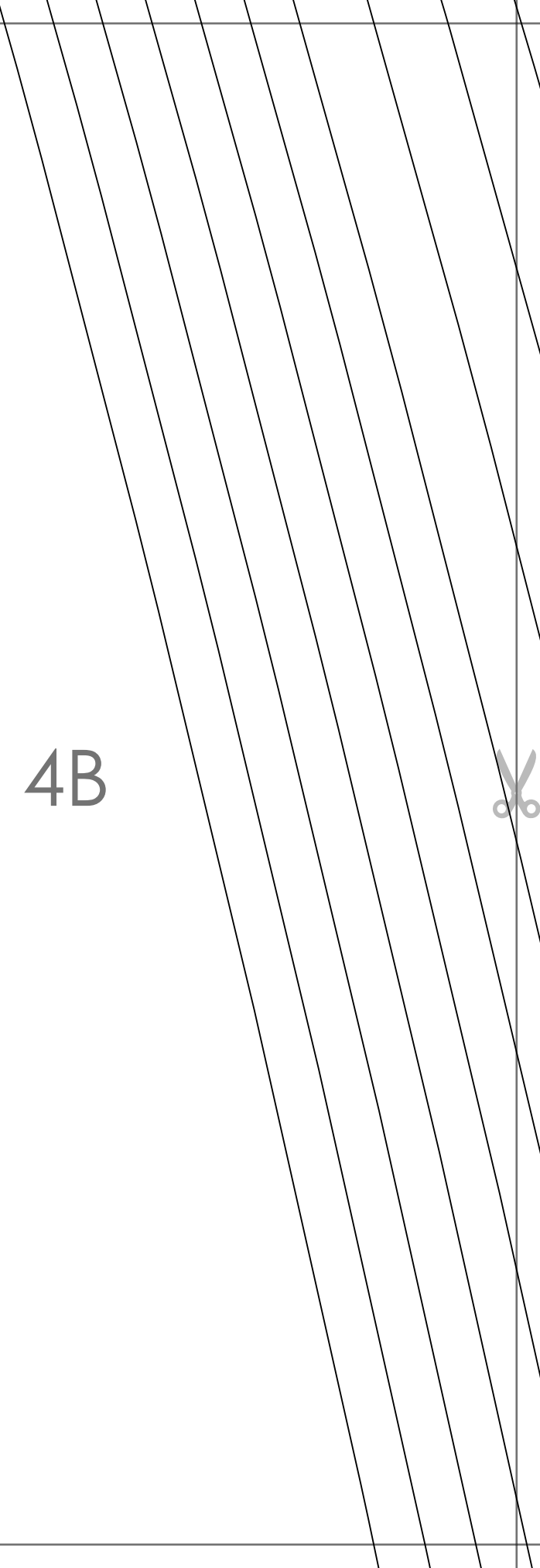
~~Size: M~~

BACK SKIRT
cut 2 mirrored

Page 4A



Page 4B



Page 4C





Page 4D





Page 4E





Page 5A





Page 5B

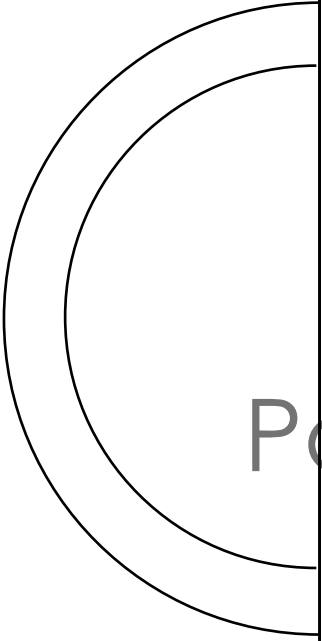
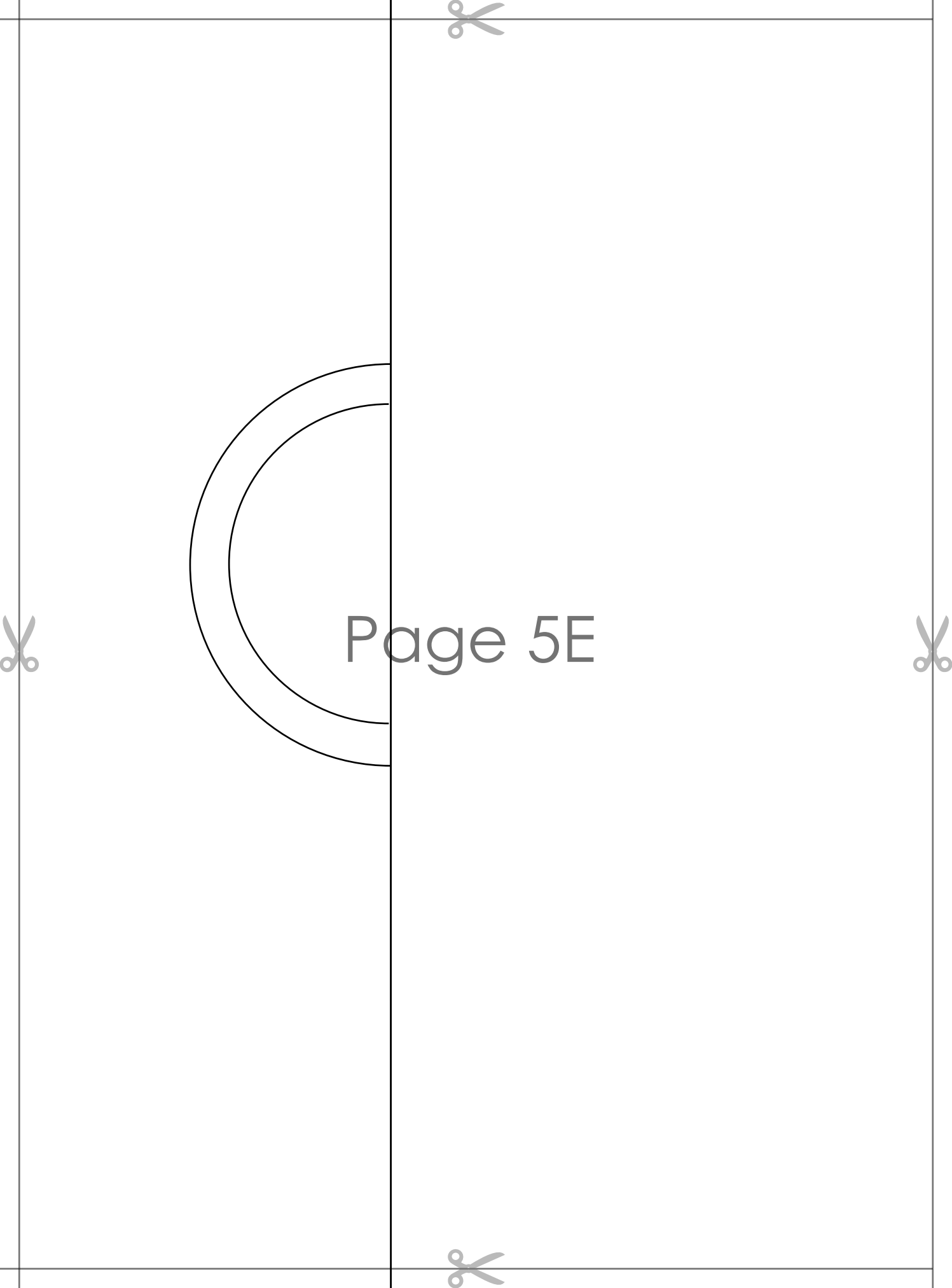


Page 5C



Page 5D





Page 5E



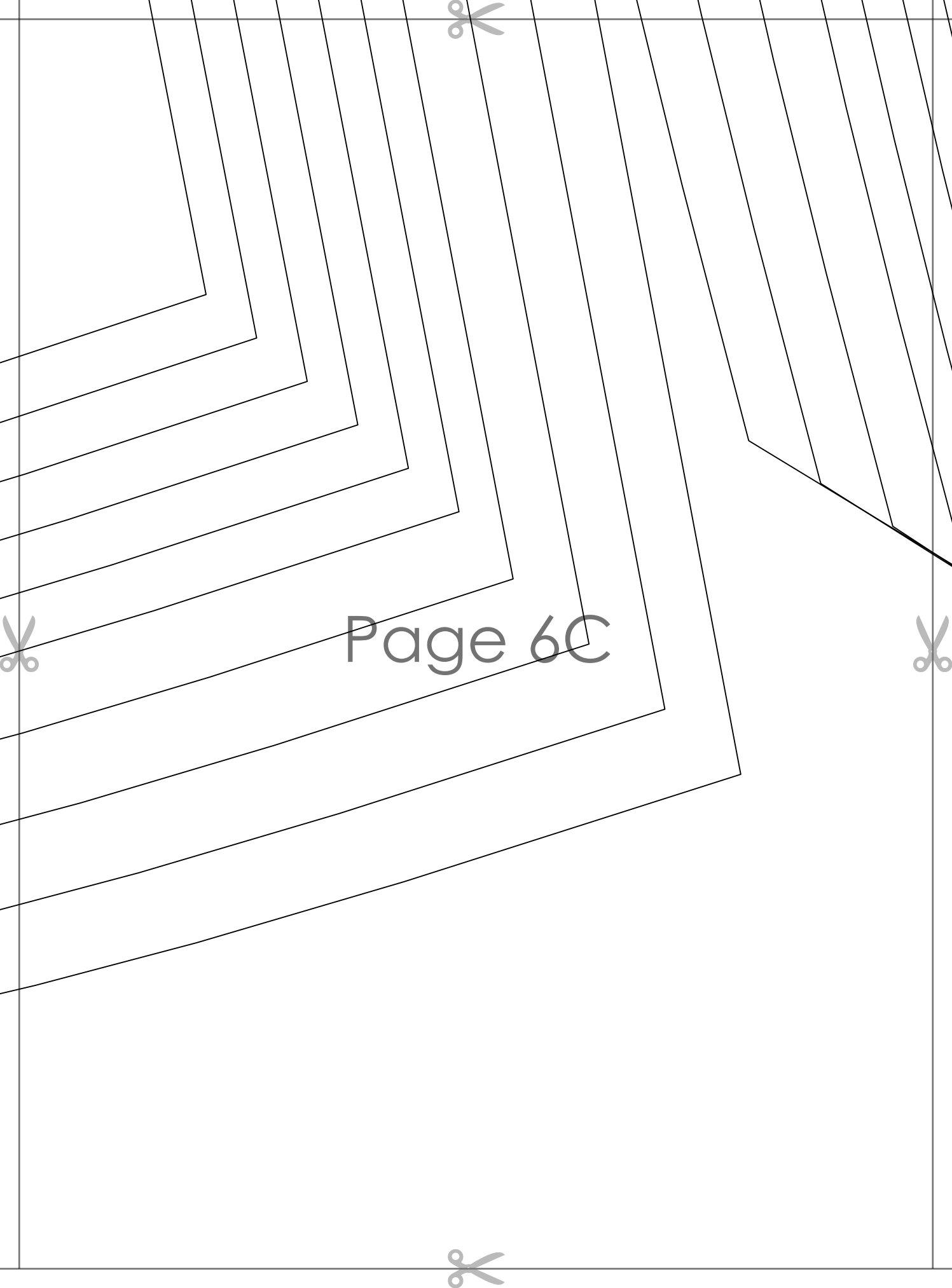
Page 6A



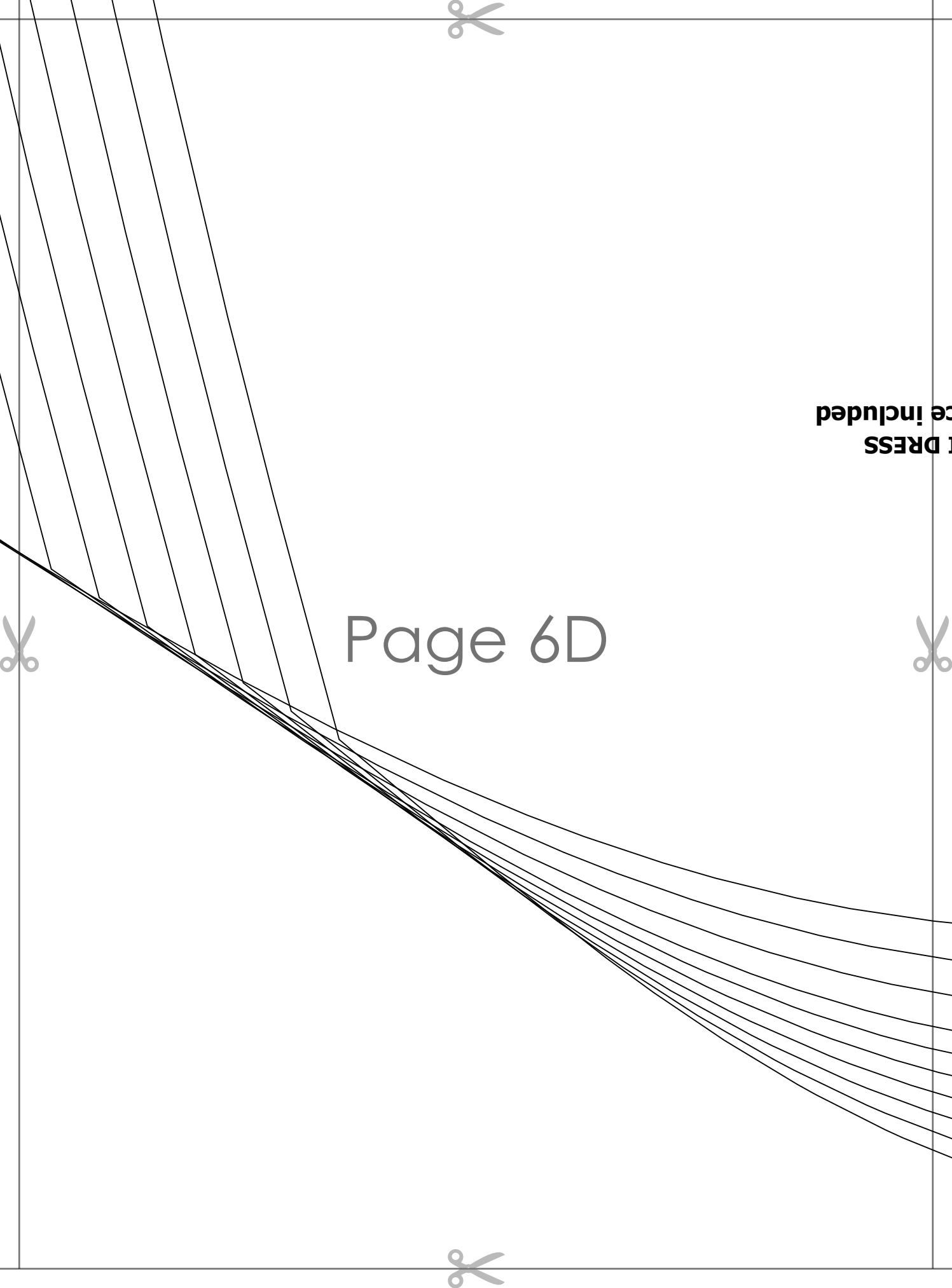


Page 6B





Page 6C



Page 6D

DRESS
ce included



FRONT SKIRT
cut 1 on fold

STAYSTAYS

IRIS PUFFED SLEEVE MIDI DRESS (3/8 in) seam allowance!



Page 6E

