

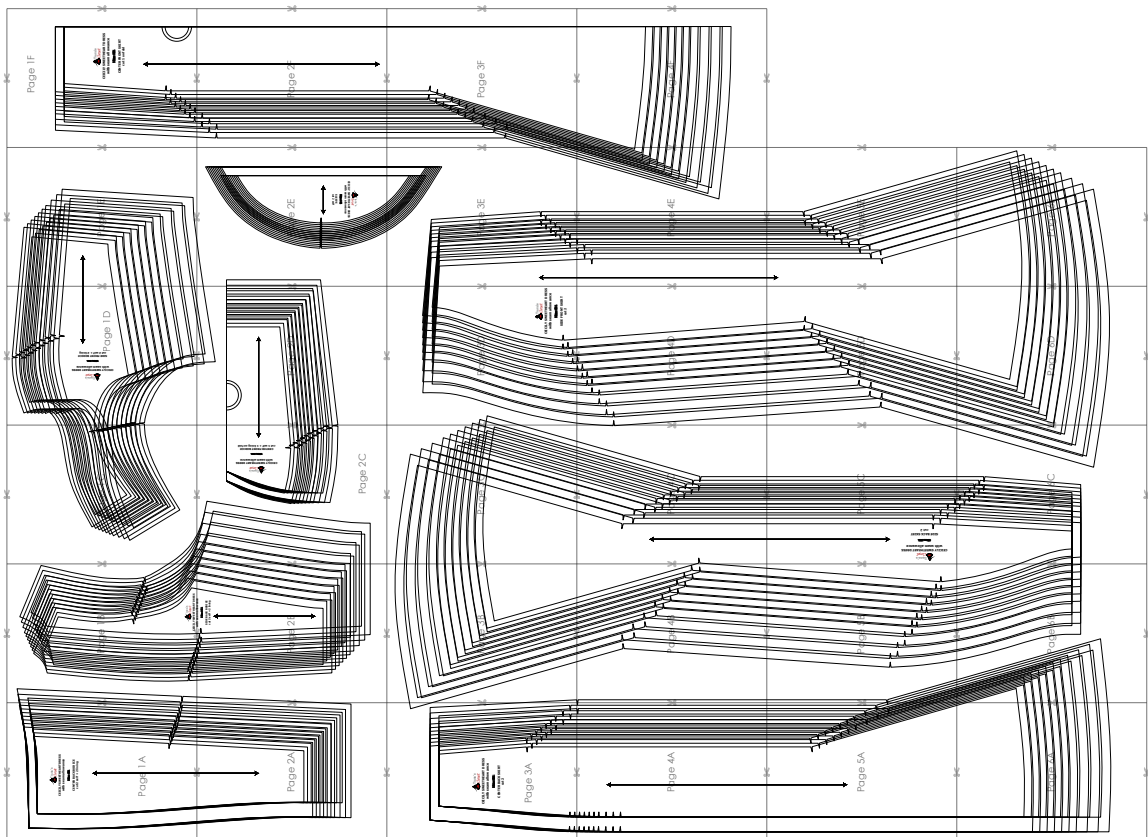
**SIZE TABLE**  
**TIANA'S CLOSET SEWING PATTERNS**

Size code	XXS	XS	S	M	L	XL	XXL	3XL	4XL	5XL	
Bust	centimeter	80	84	88	92	96	100	104	110	116	122
	inch	31.5	33.1	34.6	36.2	37.8	39.4	40.9	43.3	45.7	47.2
Waist	centimeter	60	64	68	72	76	80	84	90	96	102
	inch	23.6	25.2	26.8	28.3	29.9	31.5	33.1	35.4	37.8	40.2
Hip	centimeter	88	92	96	100	104	108	112	118	124	130
	inch	34.6	36.2	37.8	39.4	40.9	42.5	44.1	46.5	49.6	52.0

**PRINTING INSTRUCTIONS**

- Tiana's Closet sewing patterns are made in Layered PDF format, which means all sizes are saved in one file and can be shown or hidden. It is recommended to use Adobe Acrobat Reader (paid version on Mac OS, free on Windows) or Foxit PDF Reader (free, works on Windows only) to read the file correctly. In order to choose the desired size(s), go to Layers tab of your PDF reader, uncheck all boxes except for the desired size(s) and the box Print for all sizes.
- When printing the pattern, go to Print settings, in the tab Scale choose Custom scale: 100% (or Scaling: None or Actual Size) to print true to size. Note: some computers print smaller than true size even when you choose 100% scale, so you will have to adjust the scale to a little larger than 100% and measure the test square until you get the true size.
- The test square is 10 centimeters (horizontally) and 4 inches (vertically).
- Always print the first page of the file and measure to avoid waste of paper.
- After printing the pattern, cut the pages along the lines with scissors icon, align and tape the pages according to their sequences. For example, page 1A is taped to page 1B in a row, and page 1A is taped to page 2A in a column. Please see the image below to see how the pages line up.
- You can find photo instruction for printing sewing patterns on Tiana's Closet website: <https://tianas-closet.com/index.php/how-to-print-tianas-closet-patterns/>

**CEICILY SWEETHEART DRESS**



For more ideas and free sewing patterns, visit <http://fianascloset.com>



**CEICILY SWEETHEART DRESS  
with seam allowance**

**Size: XS**

**CENTER BACK BODICE  
cut 2 self + 2 lining**



Page 1A



Page 1B



**CECILY SWEETHEART DRESS**  
with seam allowance



Page 1C



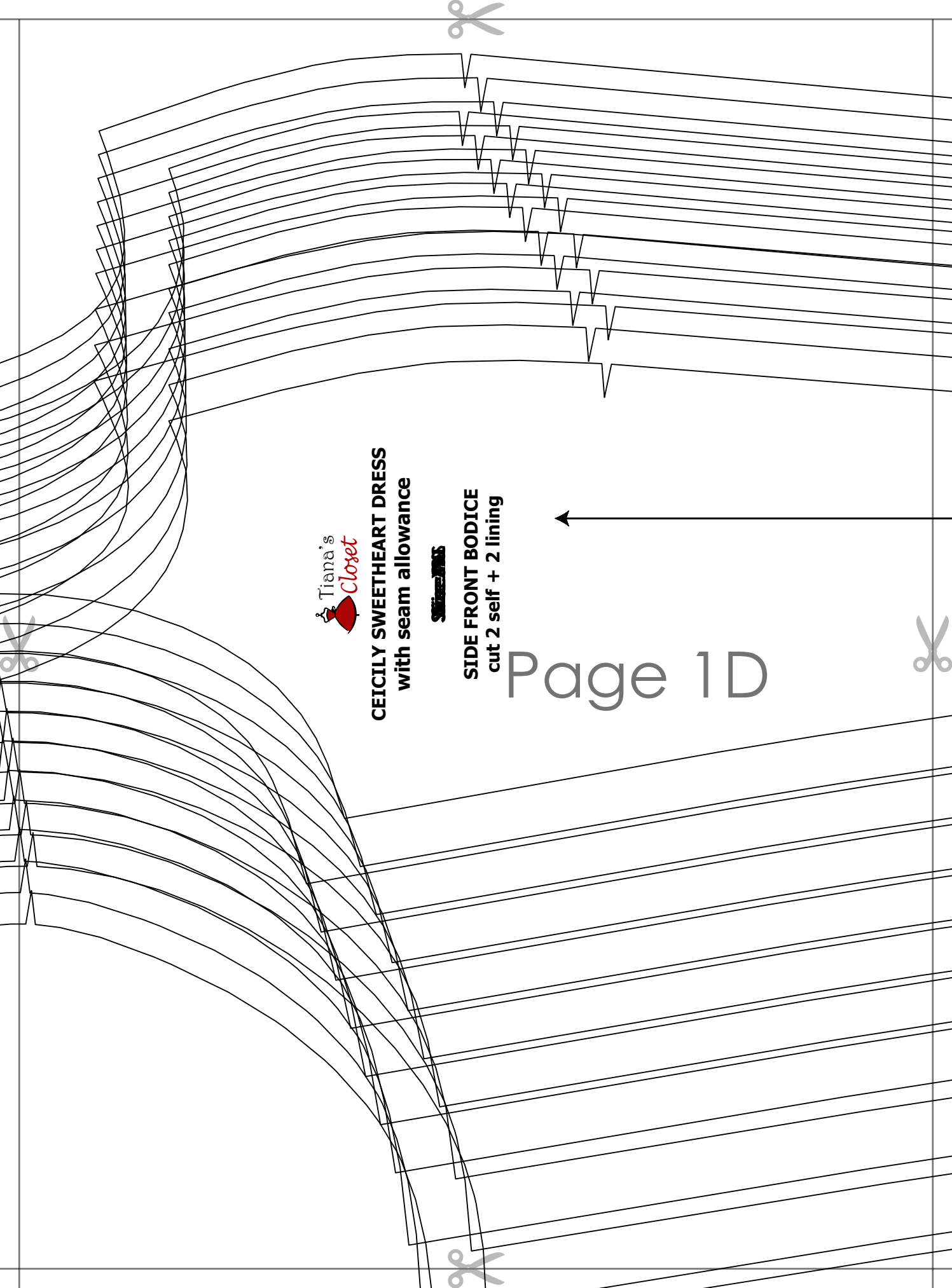


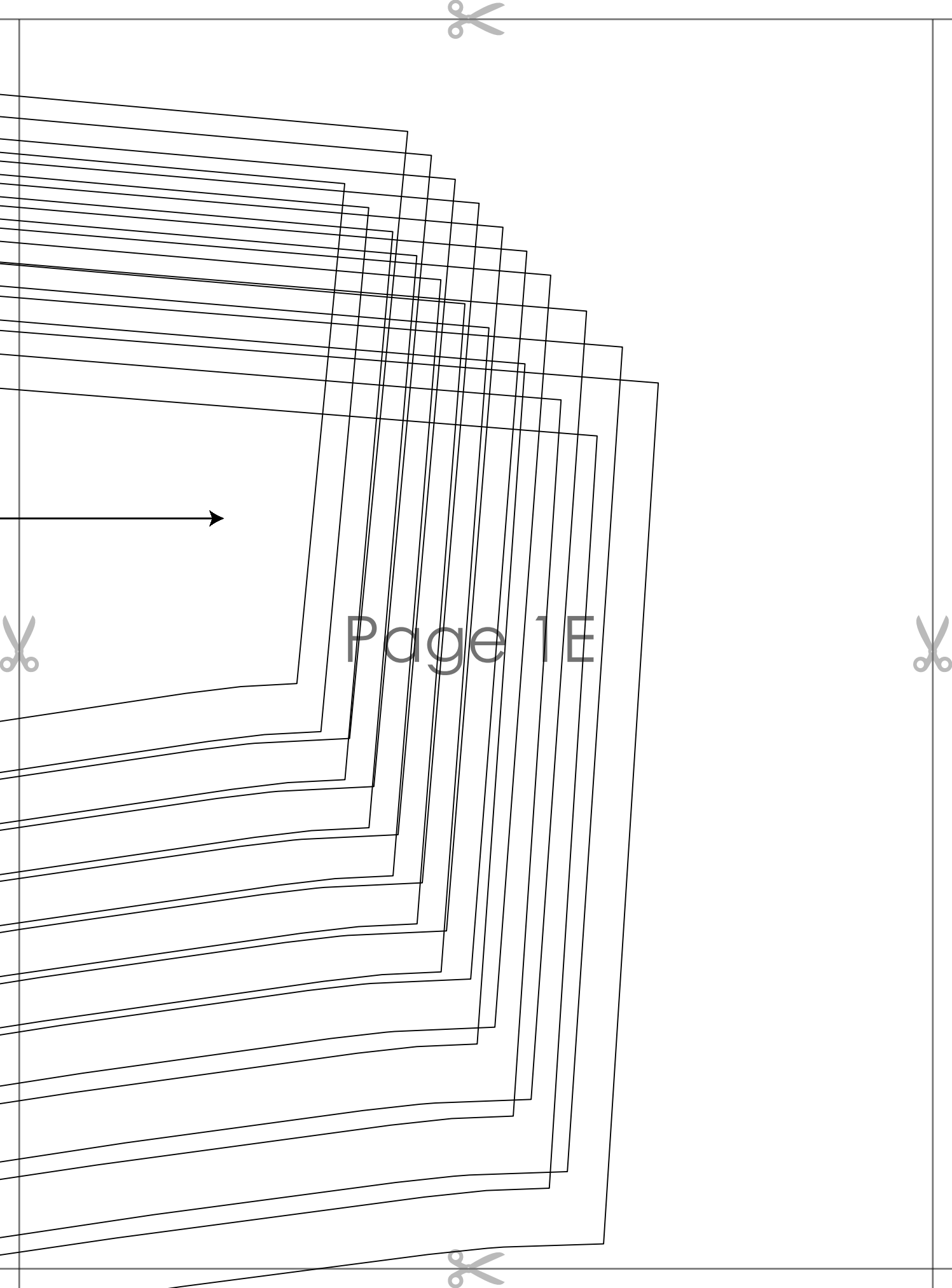
**CEICILY SWEETHEART DRESS**  
with seam allowance

**SWIIZZERS**

**SIDE FRONT BODICE**  
cut 2 self + 2 lining

Page 1D

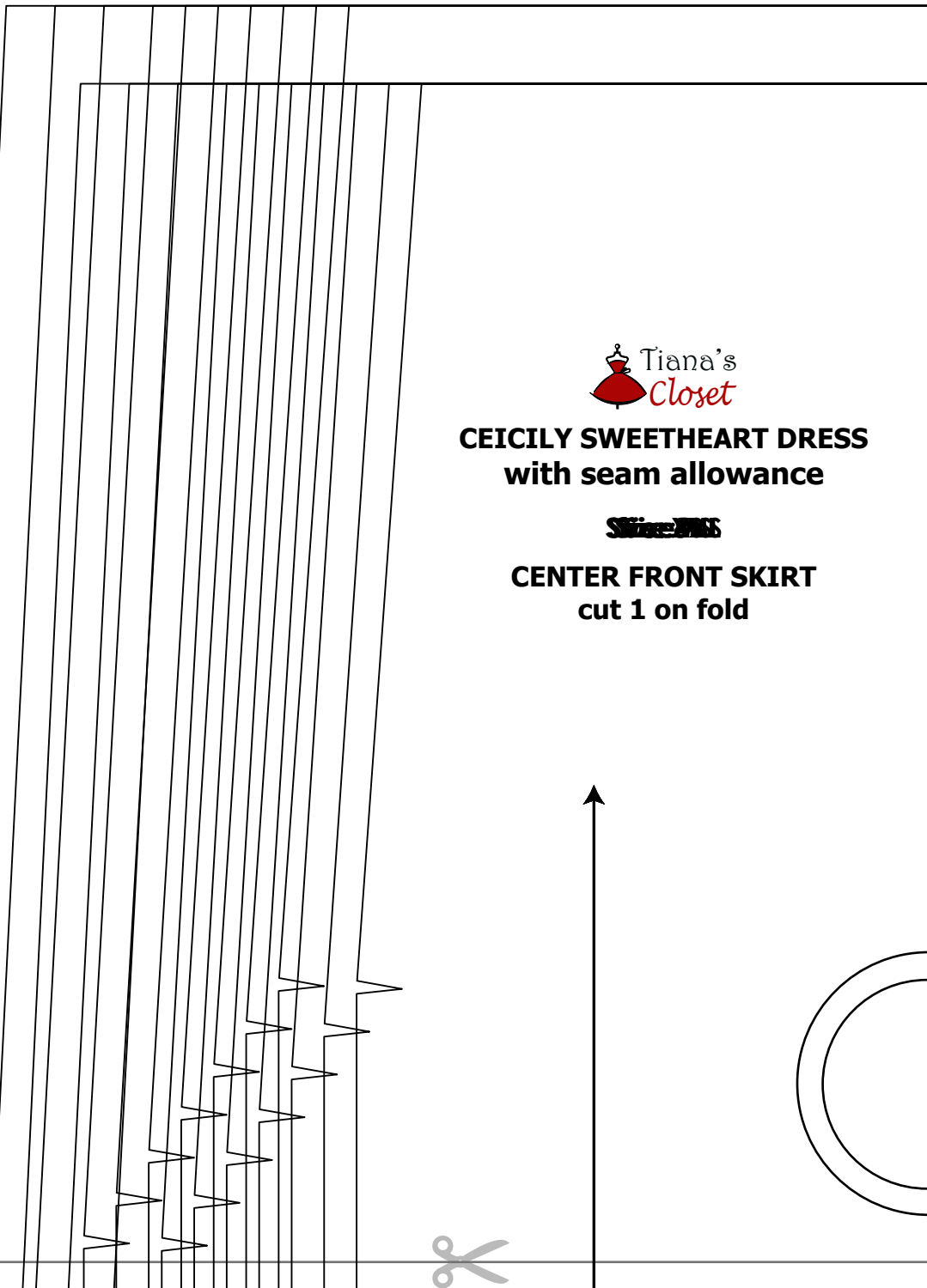




Page 1E



# Page 1F



**CEICILY SWEETHEART DRESS  
with seam allowance**

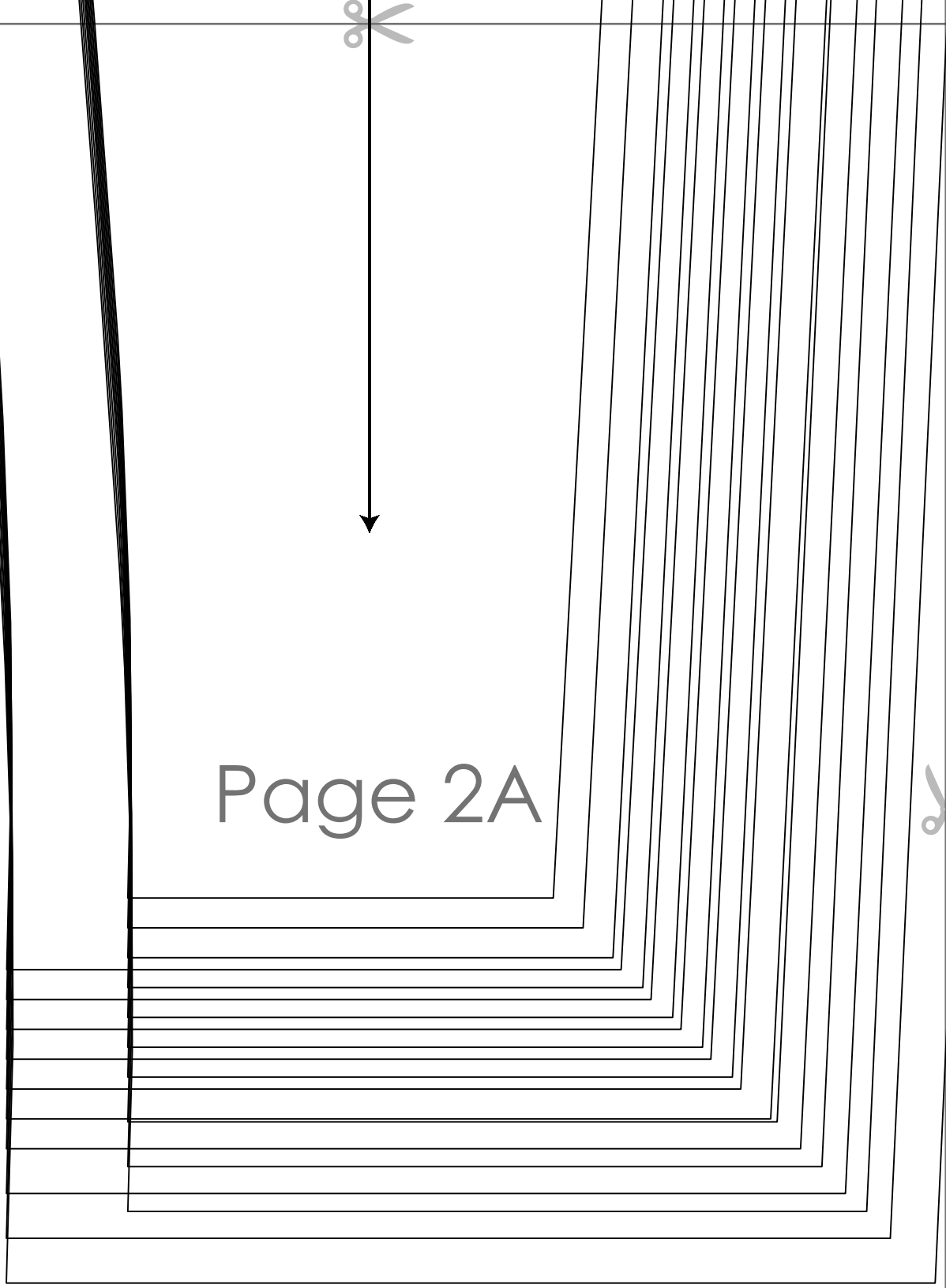
~~Size: M~~

**CENTER FRONT SKIRT  
cut 1 on fold**





Page 2A





**CECILEY SWEETHEART DRESS**  
with seam allowance

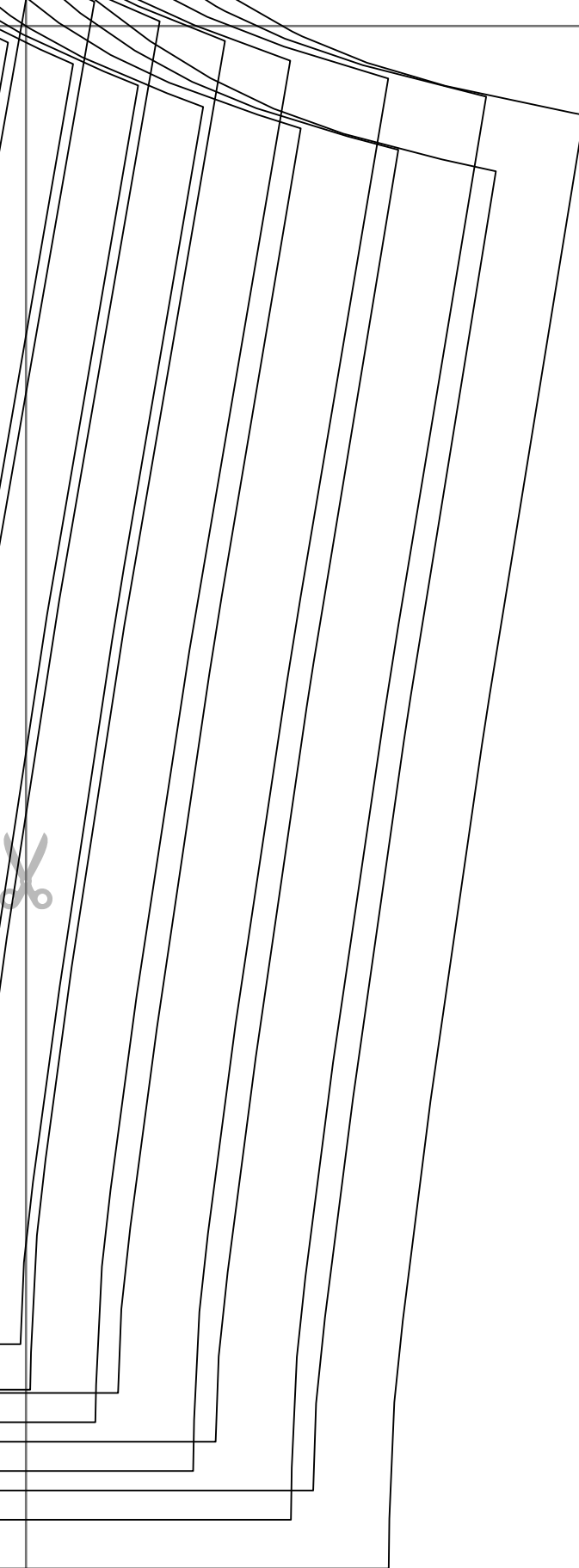
**Size: M**

**SIDE BACK BODICE**  
cut 2 self + 2 lining



Page 2B





Tiana's  
**Closet**  
**CEICILY SWEETHEART DRESS**  
 with seam allowance



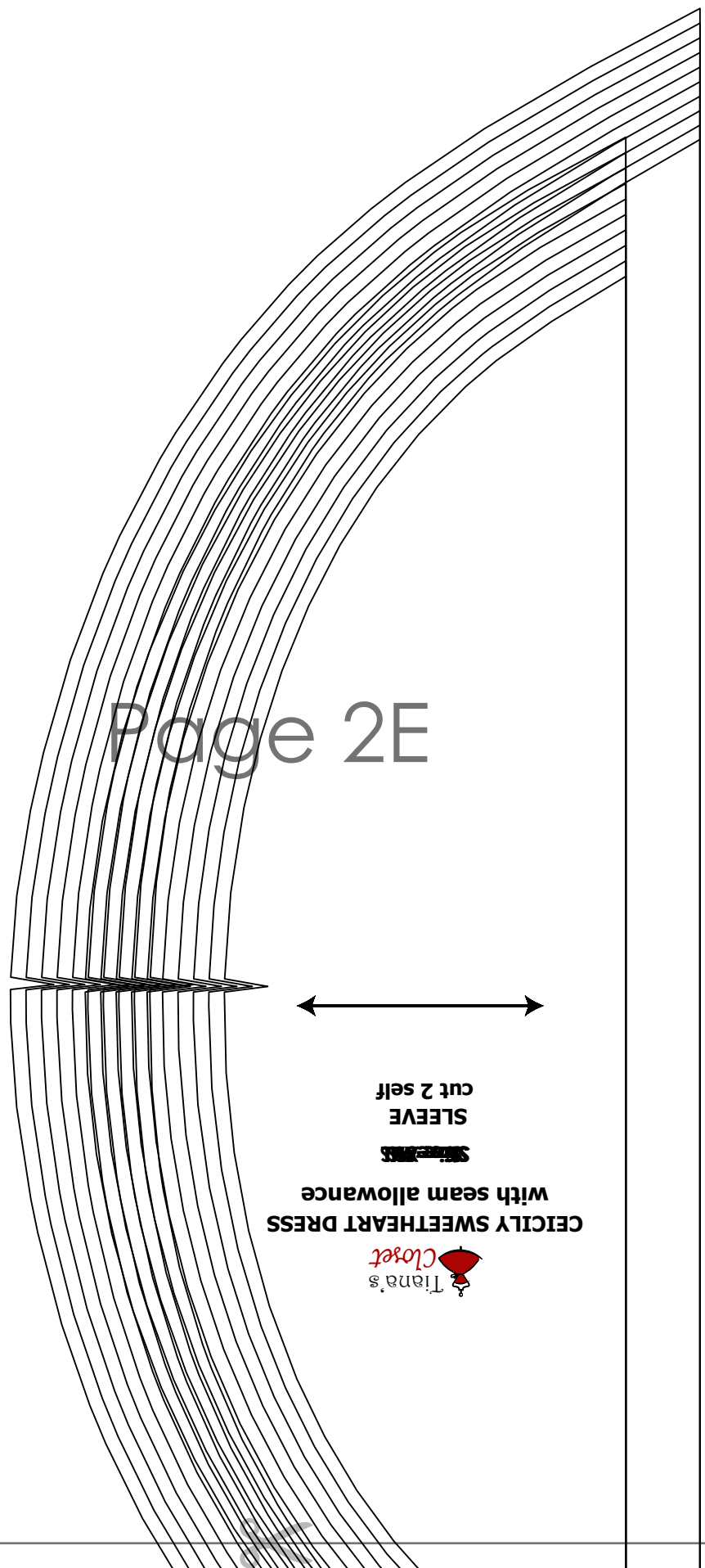
**CENTER FRONT BODICE**  
 cut 2 self + 2 lining





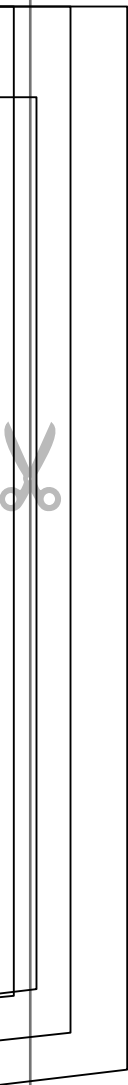
Page 2D





Page 2E

**CECILY SWEETHEART DRESS**  
with seam allowance  
~~SLEEVES~~  
**SLEEVE**  
cut 2 self





Page 2F





**CEICILY SWEETHEART DRESS  
with seam allowance**

~~Size 20~~

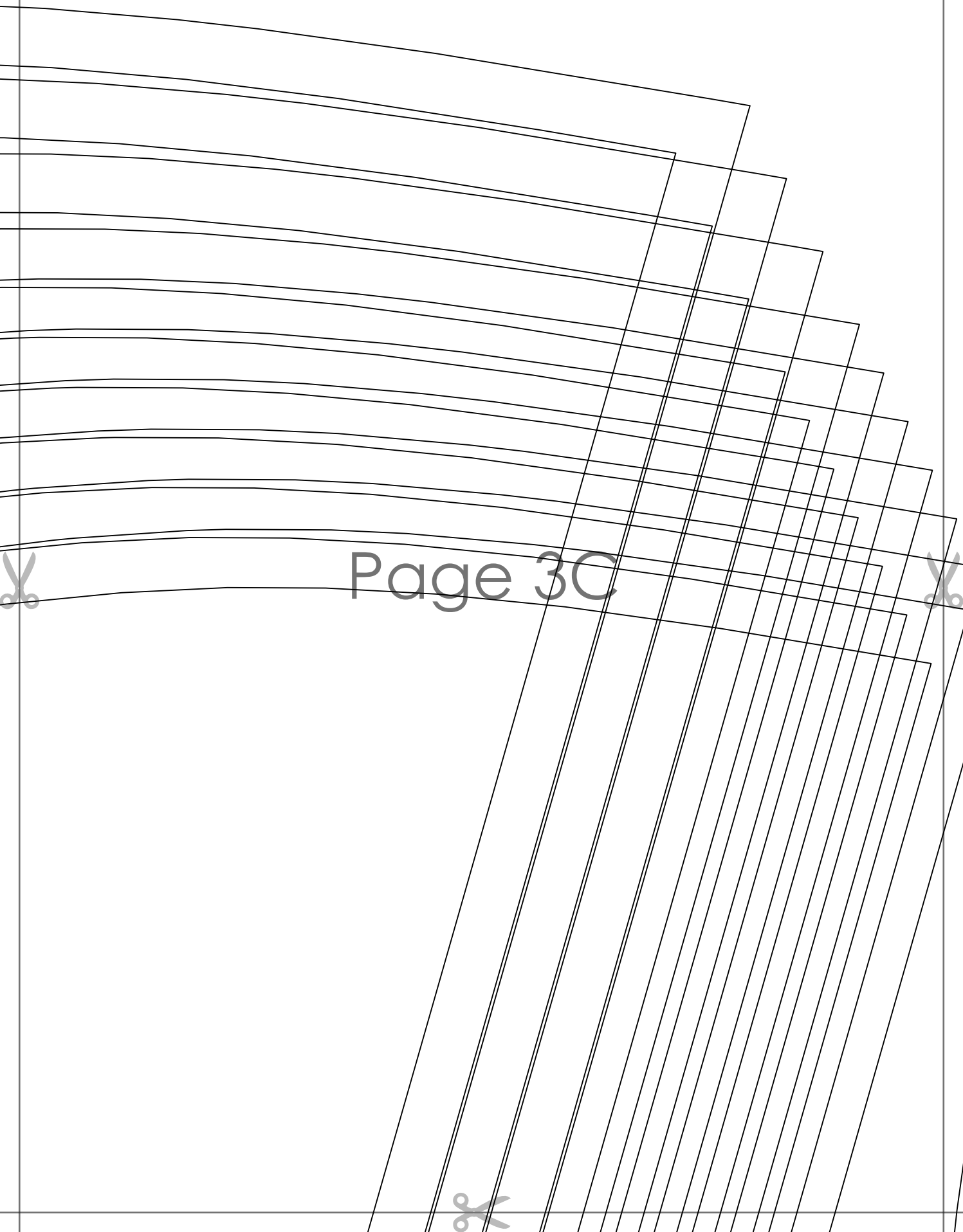
**CENTER BACK SKIRT  
cut 2**

Page 3A



Page 3B





Page 3C







Page 3D



**CEICILY SWEETHEART DRESS  
with seam allowance**

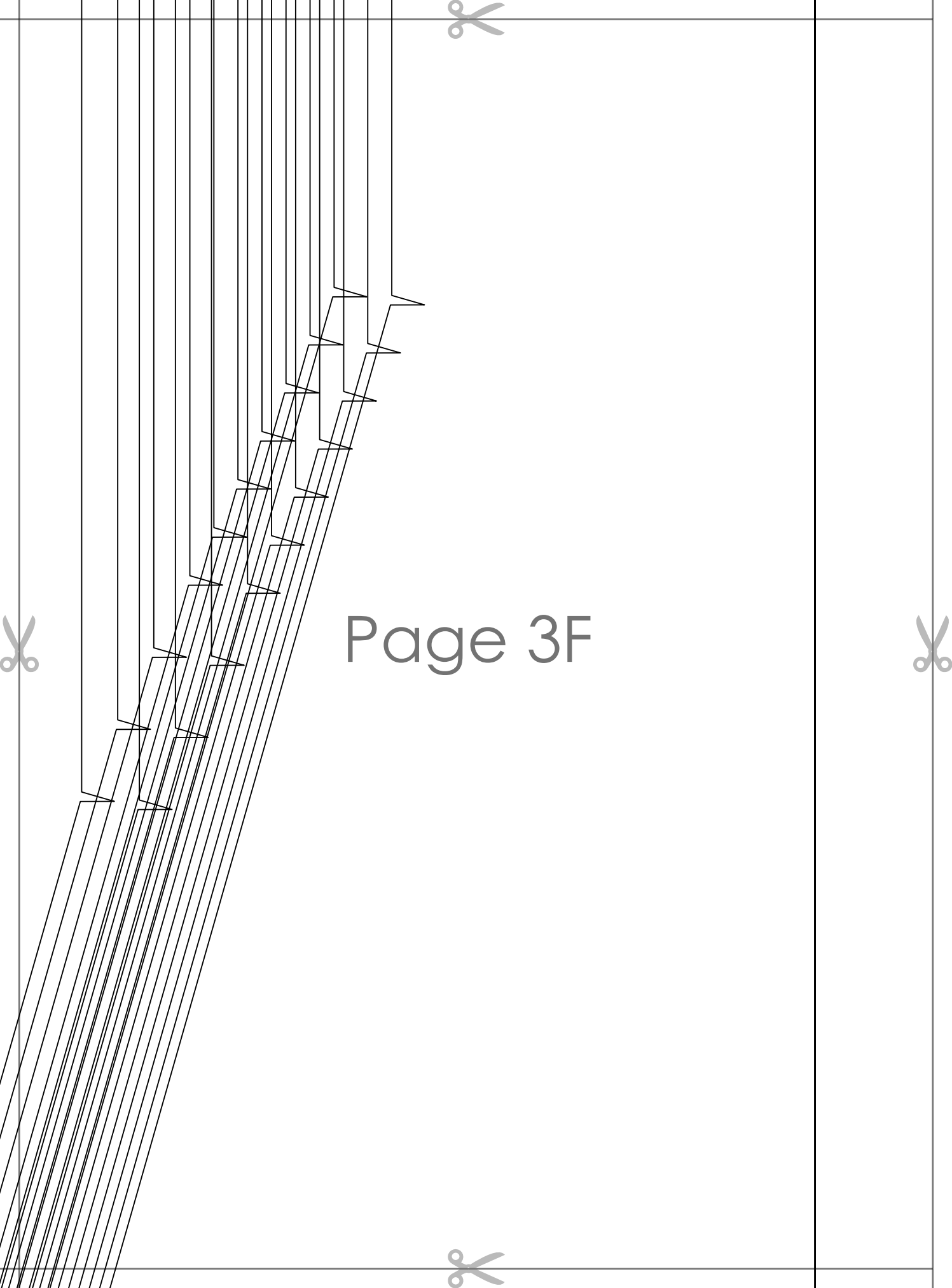
~~Size 225~~

**SIDE FRONT SKIRT  
cut 2**

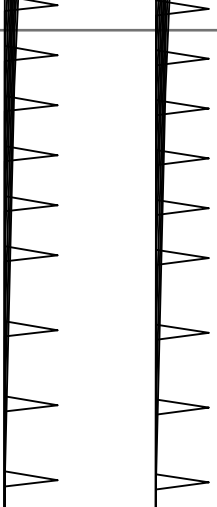


Page 3E

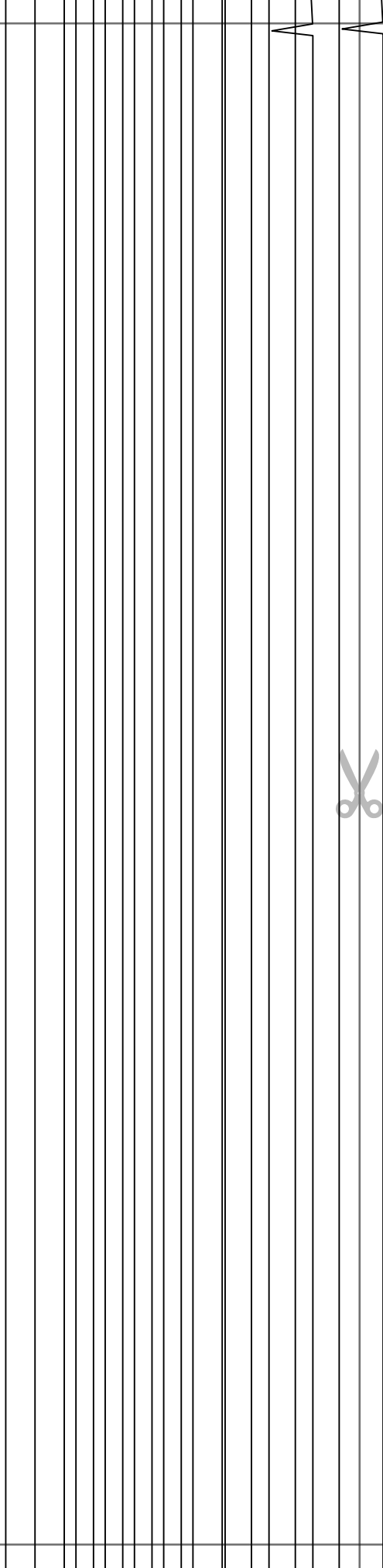




Page 3F

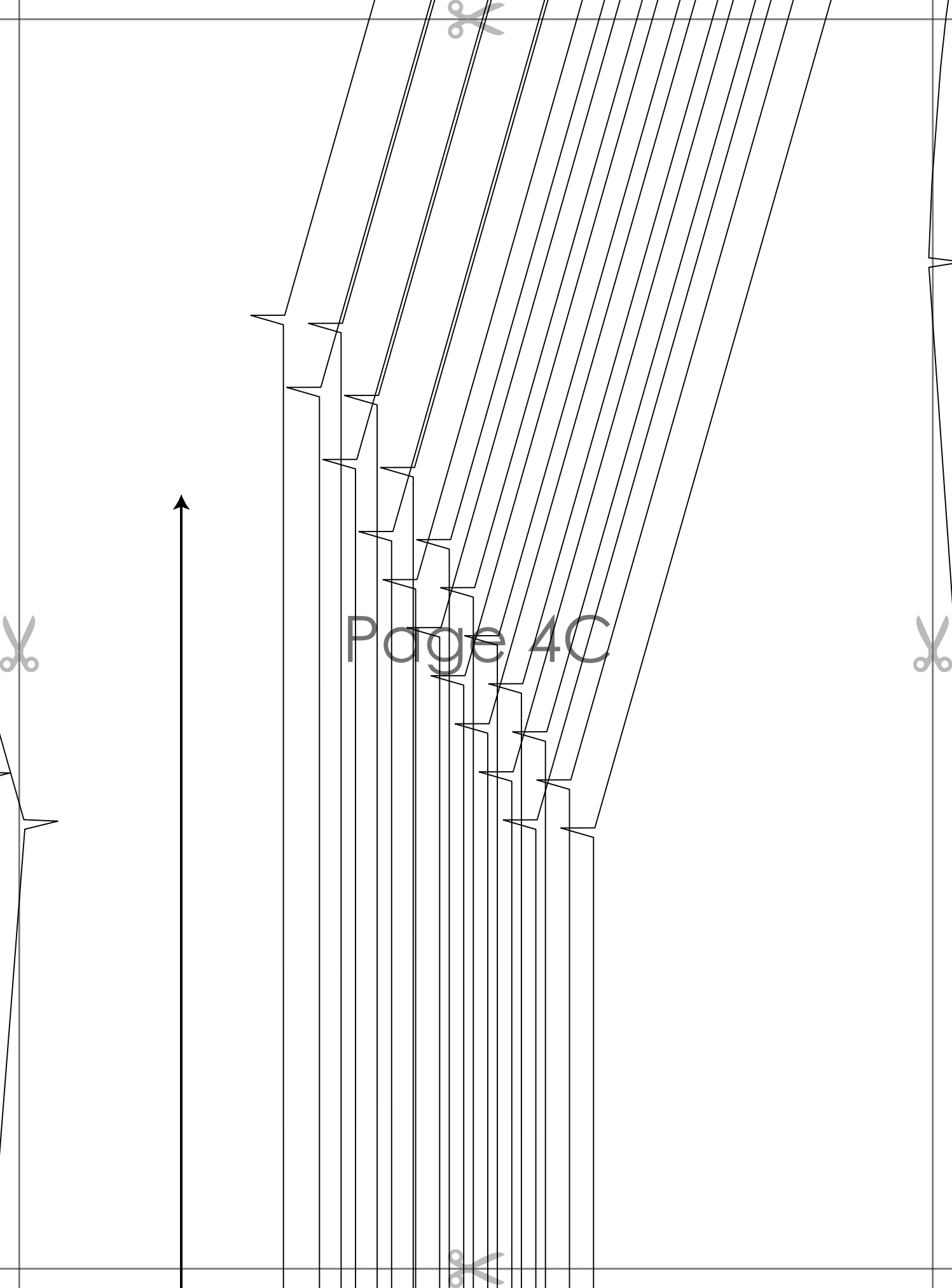


Page 4A



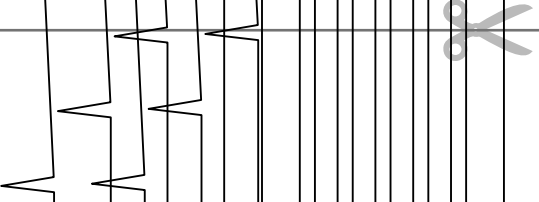
Page 4B



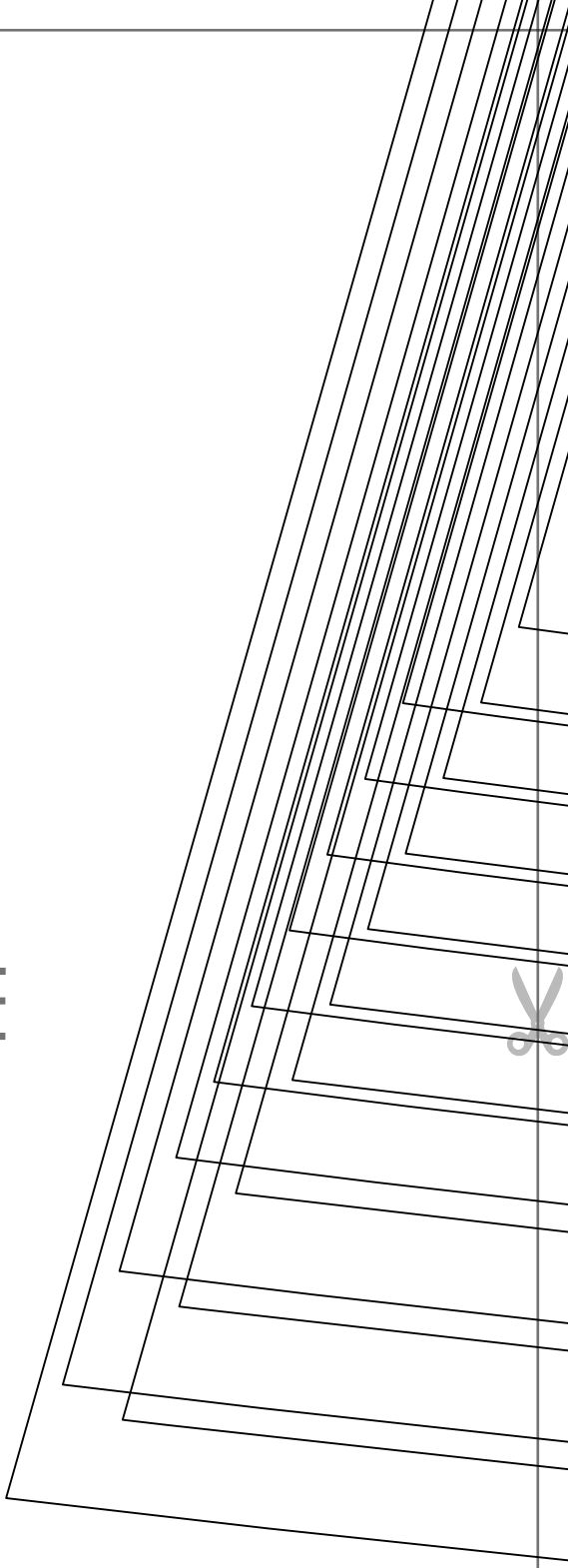


Page 4C

Page 4D



Page 4E





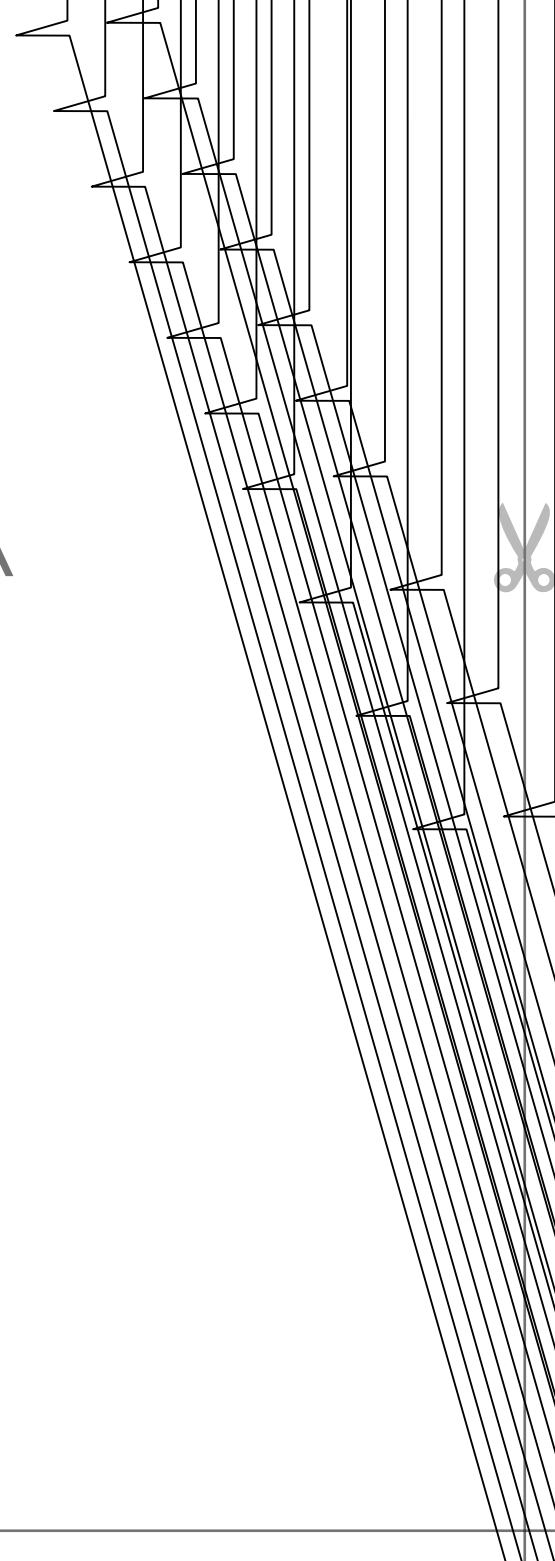


Page 4F





Page 5A



Page 5B



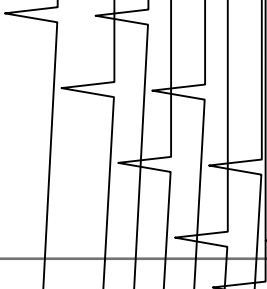


Tiana's  
Closet

**CEICILY SWEETHEART DRESS**  
with seam allowance

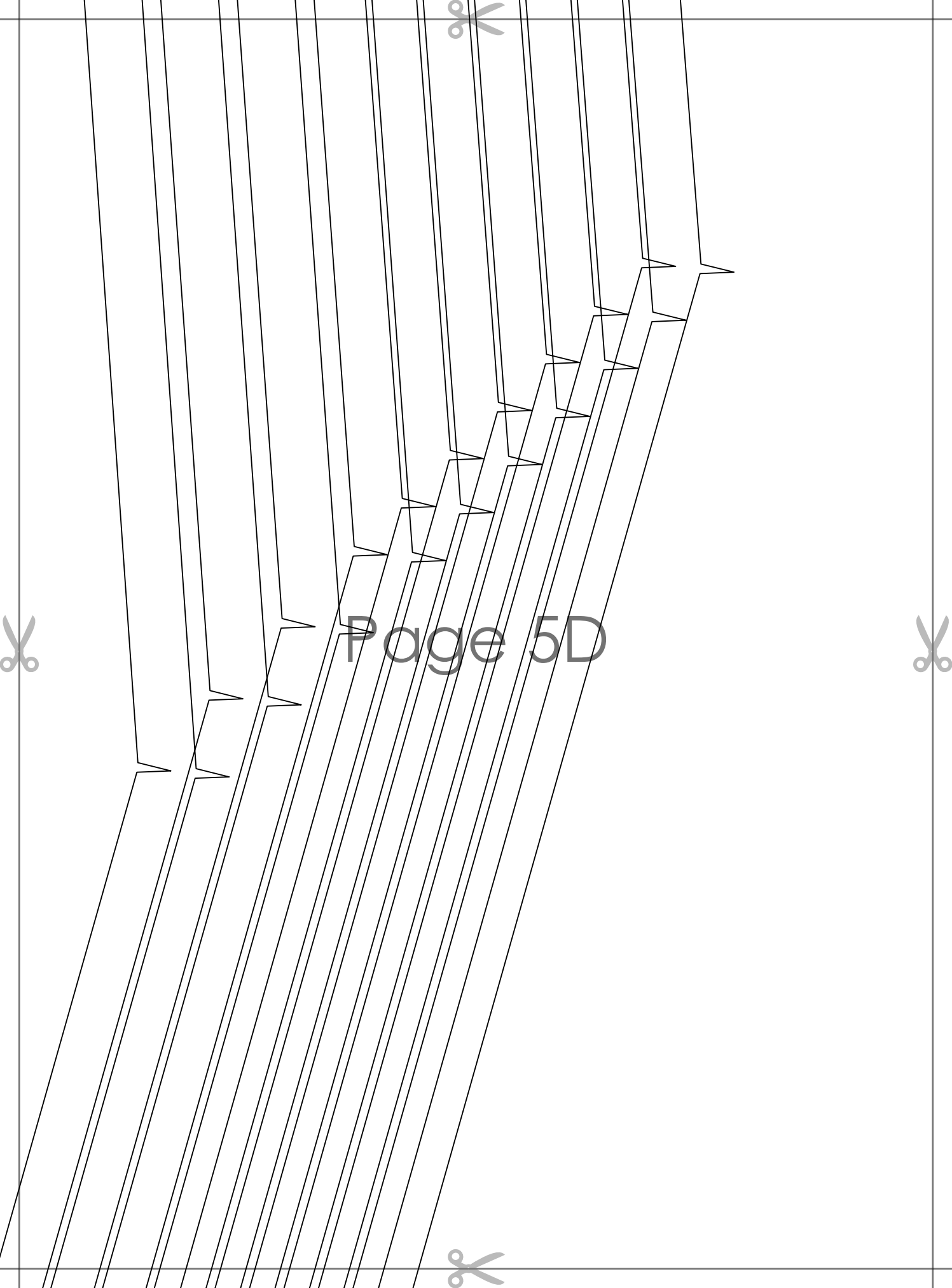
~~SWIRL DRESS~~

**SIDE BACK SKIRT**  
cut 2

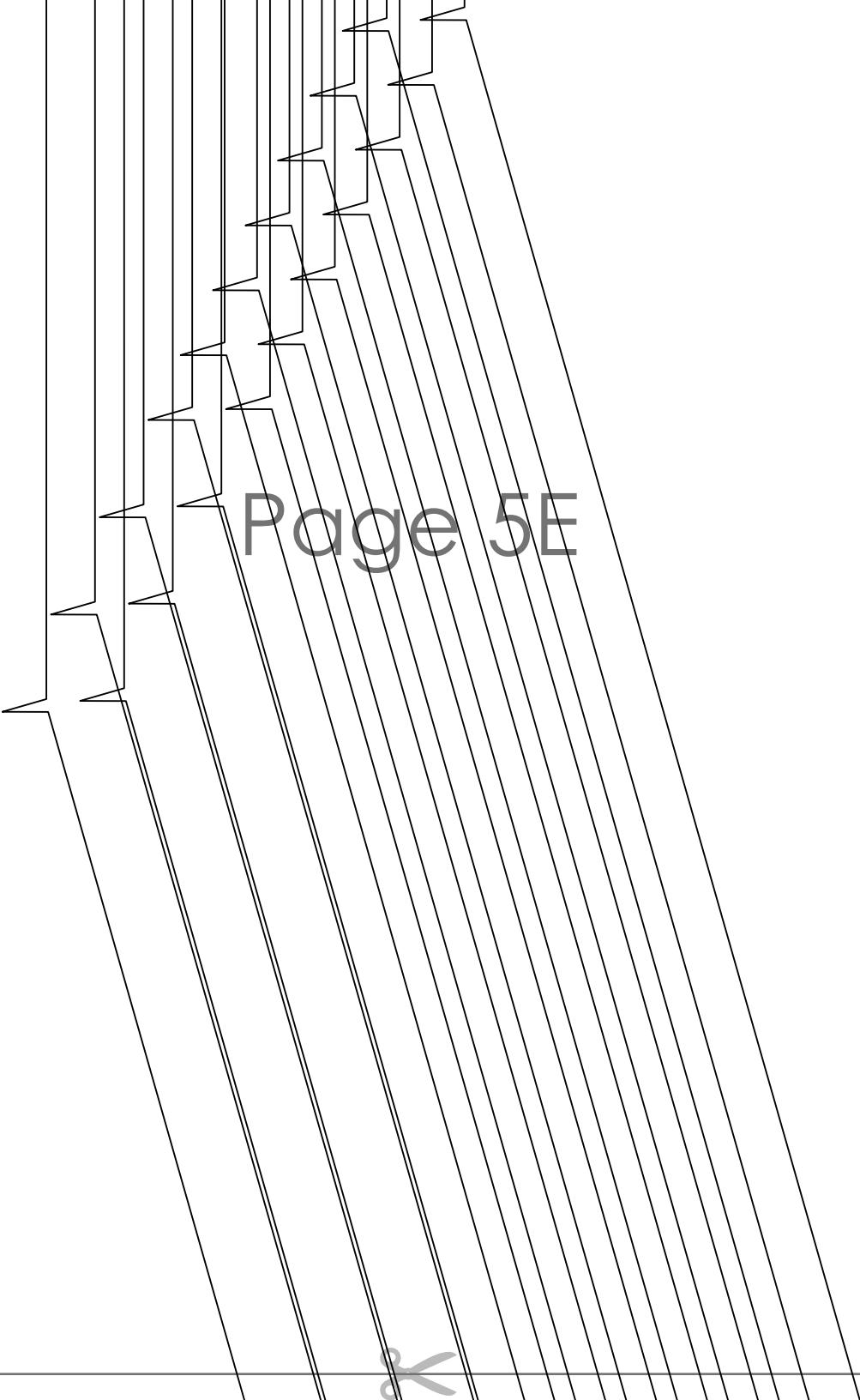


Page 5C





Page 5D

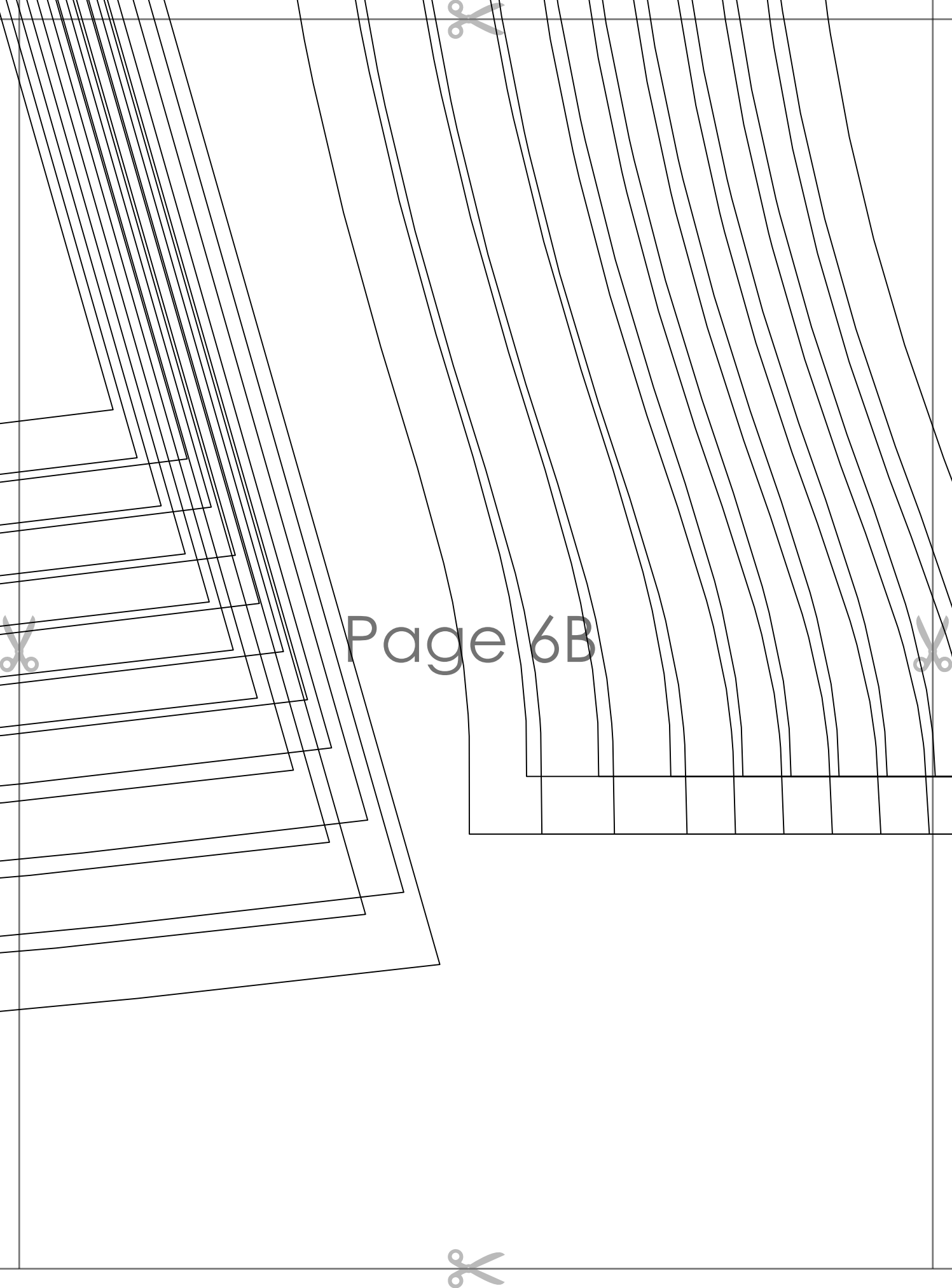


Page 5E



Page 6A





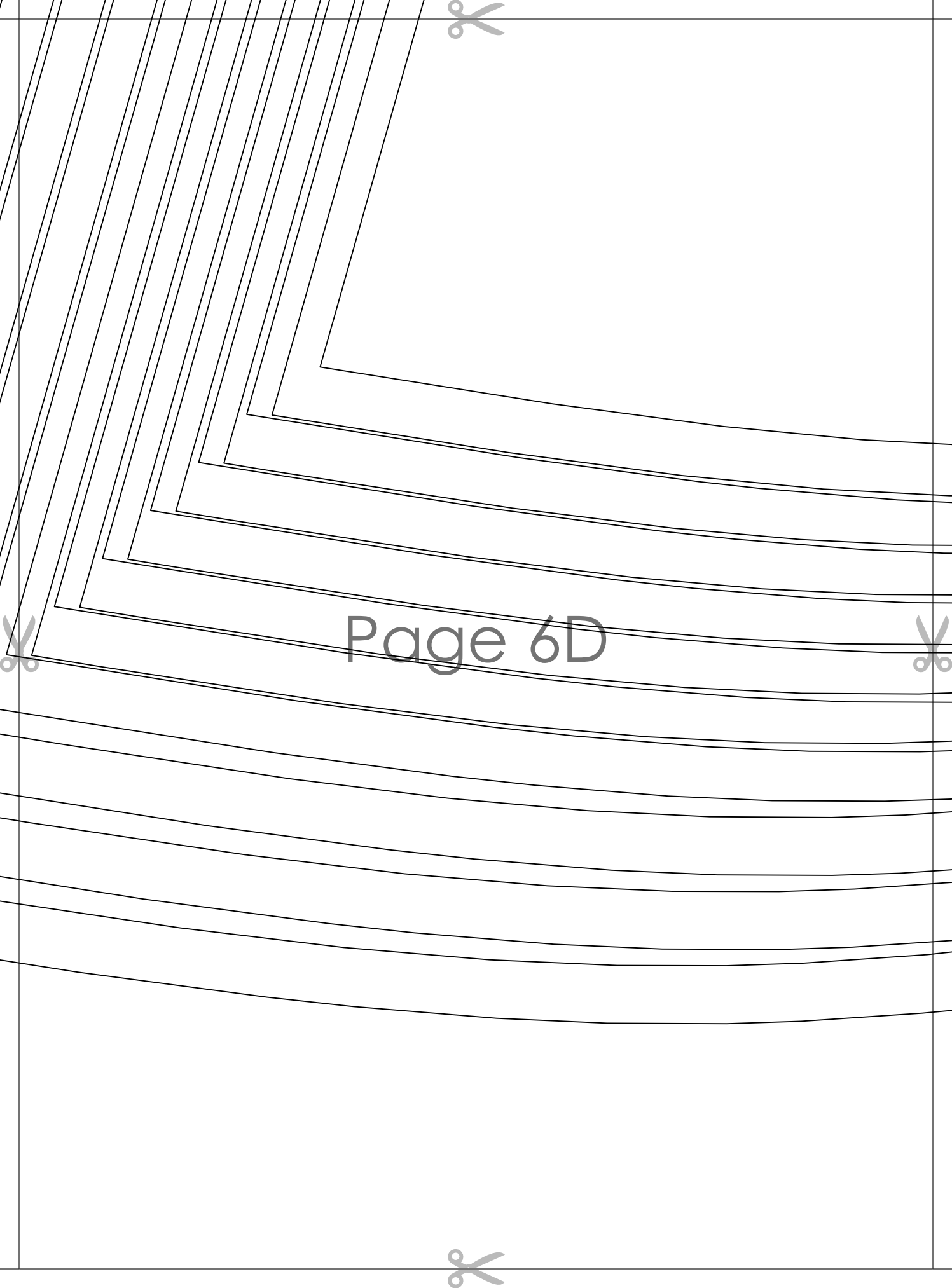
Page 6B





Page 6C





Page 6D



Page 6E

