

SIZE TABLE

TIANA'S CLOSET SEWING PATTERNS

Size code	XXS	Xs	S	M	L	XL	XXL	3XL	4XL	5XL
Bust	30	34	36	38	40	44	48	52	56	60
Waist	24	26	28	30	32	36	40	44	48	52
Hip	34	36	38	40	42	46	50	54	58	62

PRINTING INSTRUCTIONS

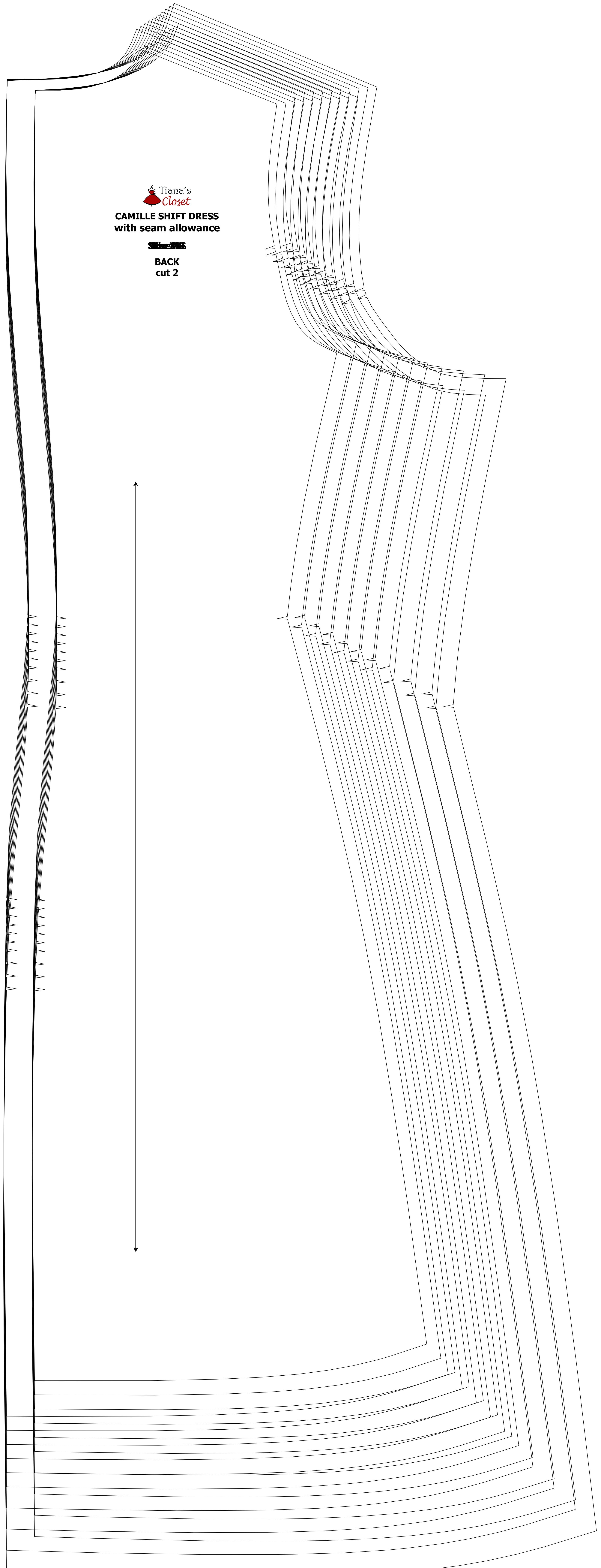
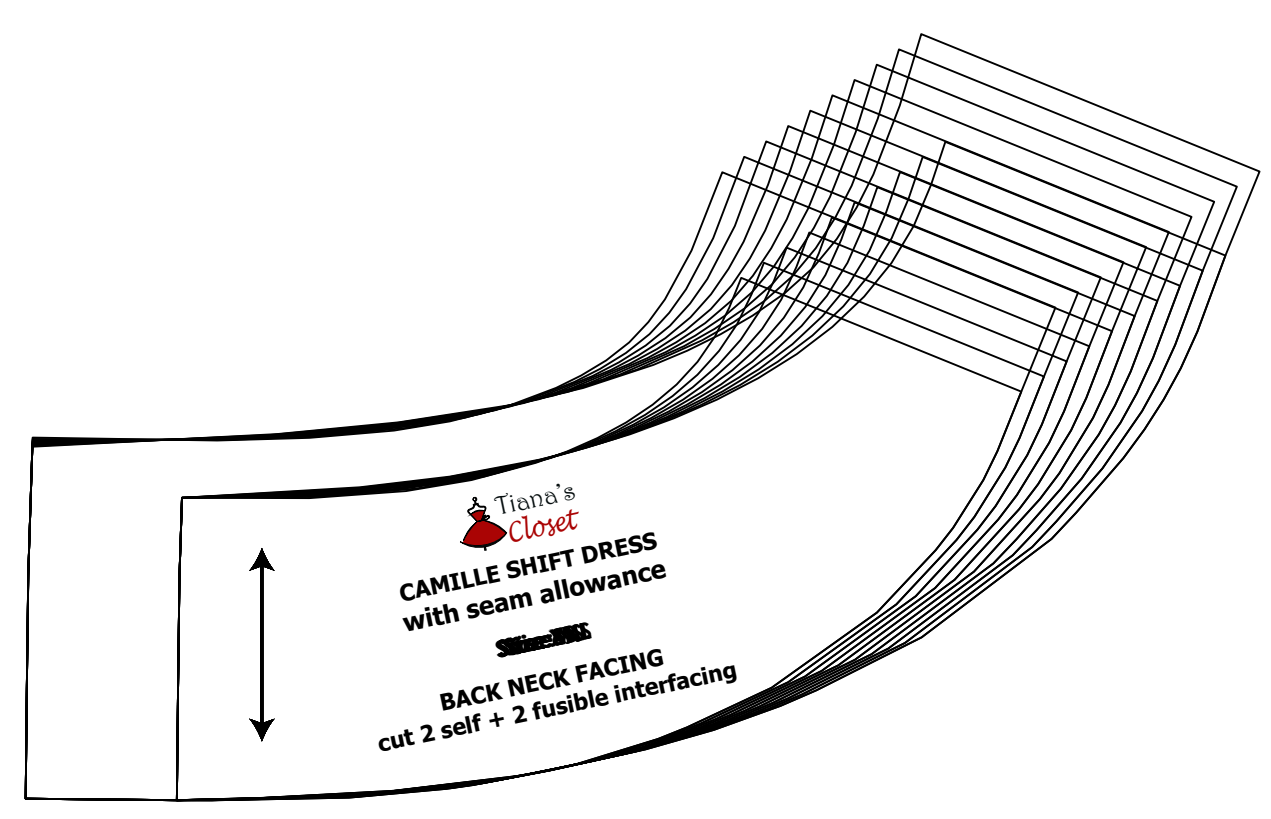
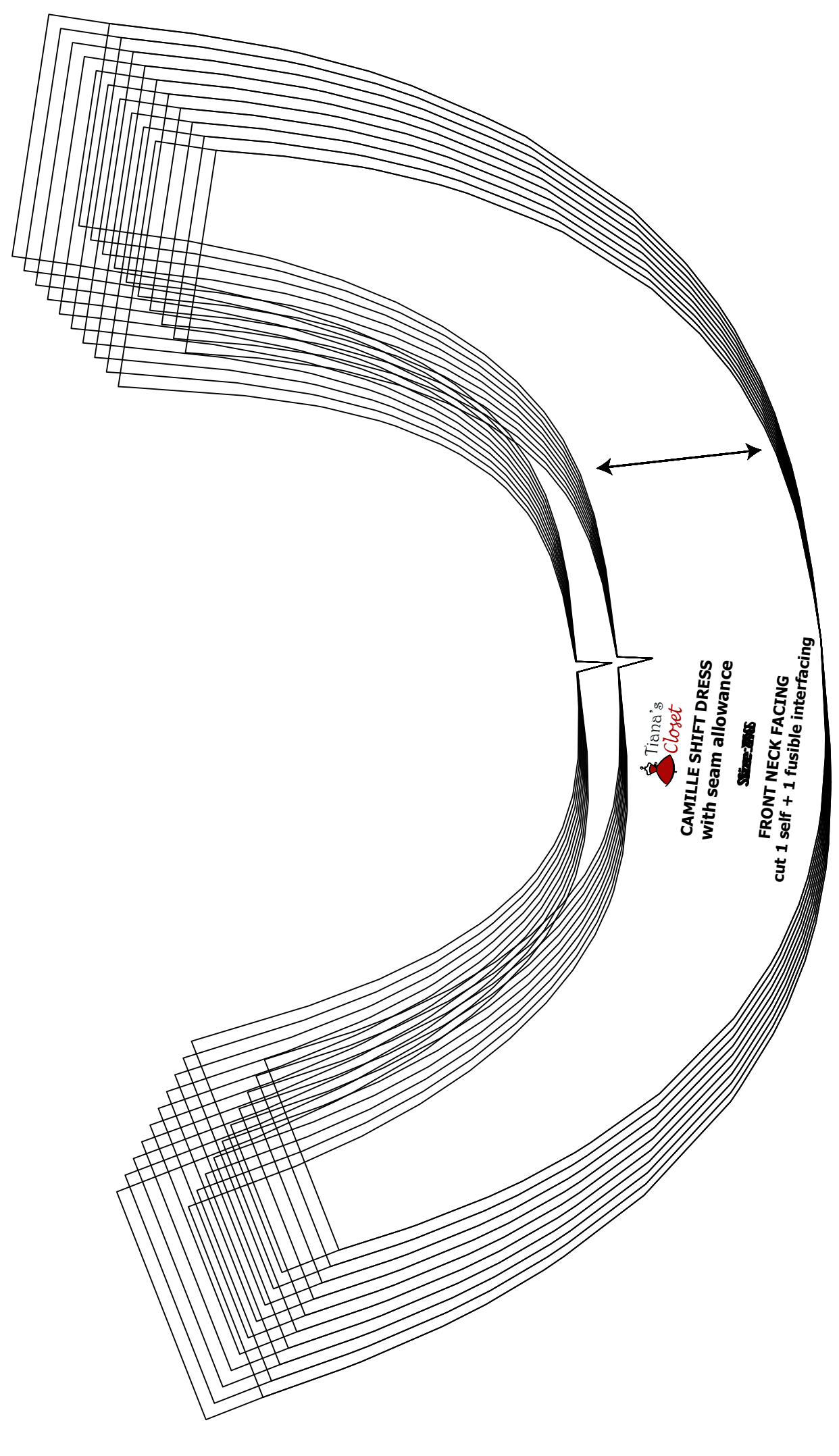
Tiana's Closet sewing patterns are made in standard PDF format, which means all files are saved in one file and can be shown or hidden. It is recommended to use Adobe Acrobat Reader (not included) on Mac OS, but in Windows you can use any PDF reader (like Adobe Reader) to view the file correctly. In order to choose the correct size, go to 'Layers' in your PDF reader, uncheck all sizes except for the correct size and then hit the 'OK' button.

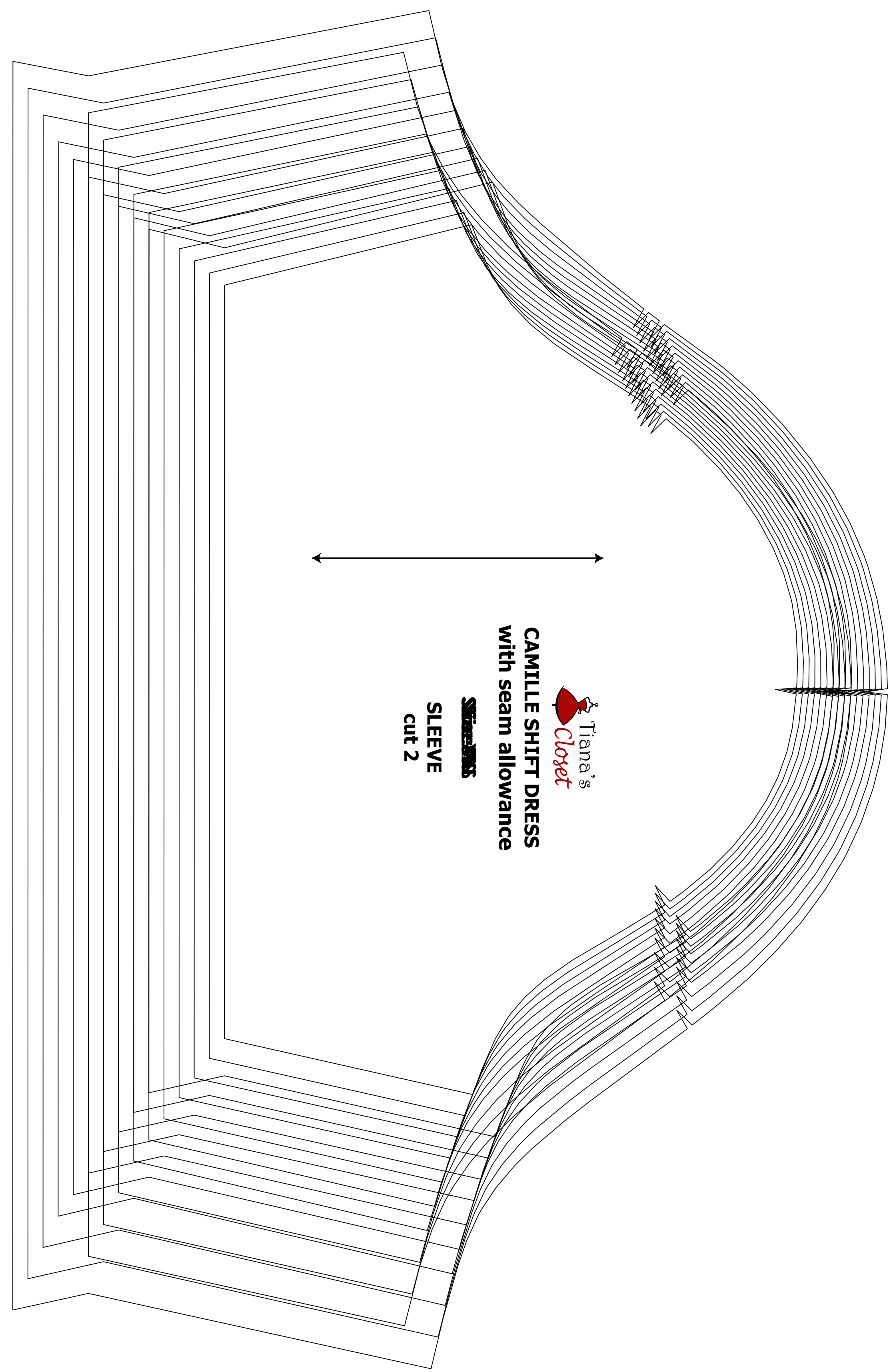
When printing the pattern, go to 'Print' settings. In the 'Page Scale' choose 'Custom' or 'Fit' (if you are printing on A4 paper). In the 'Page Range' choose 'All pages' (if you are printing on A4 paper). In the 'Page Range' choose 'All pages' (if you are printing on A4 paper). In the 'Page Range' choose 'All pages' (if you are printing on A4 paper). In the 'Page Range' choose 'All pages' (if you are printing on A4 paper).

Always print the full page of the file and measure to avoid waste of paper.

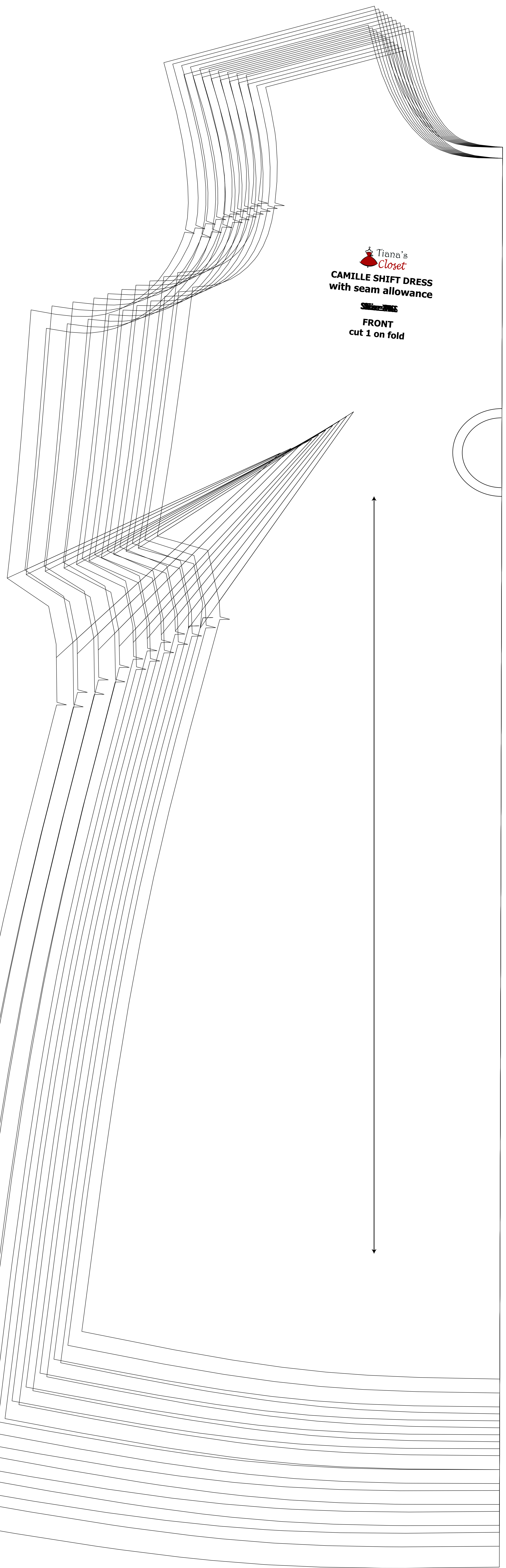
After printing the pattern, cut the paper along the lines with sharp scissors and keep the paper according to the instructions for assembly. If a paper is larger than 11 x 17 inches, you can print it on two pages. In this case, page 2A is a paper that is larger than 11 x 17 inches. In this case, page 2A is a paper that is larger than 11 x 17 inches. In this case, page 2A is a paper that is larger than 11 x 17 inches.

You can find photo instruction for printing sewing patterns on Tiana's Closet website: <https://www.tianascloset.com/2018/08/10/how-to-print-sewing-patterns/>





Tiana's Closet
CAMILLE SHIFT DRESS
with seam allowance
SLEEVE
cut 2



Tiana's Closet
CAMILLE SHIFT DRESS
with seam allowance
FRONT
cut 1 on fold