

**SIZE TABLE**  
**TIANA'S CLOSET SEWING PATTERNS**

Size code	XXS	Xs	S	M	L	XL	XXL	3XL	4XL	5XL
<b>Bust</b>	30	34	36	38	42	46	50	54	58	62
<b>Waist</b>	24	26	28	30	34	38	42	46	50	54
<b>Hip</b>	34	36	38	40	44	48	52	56	60	64

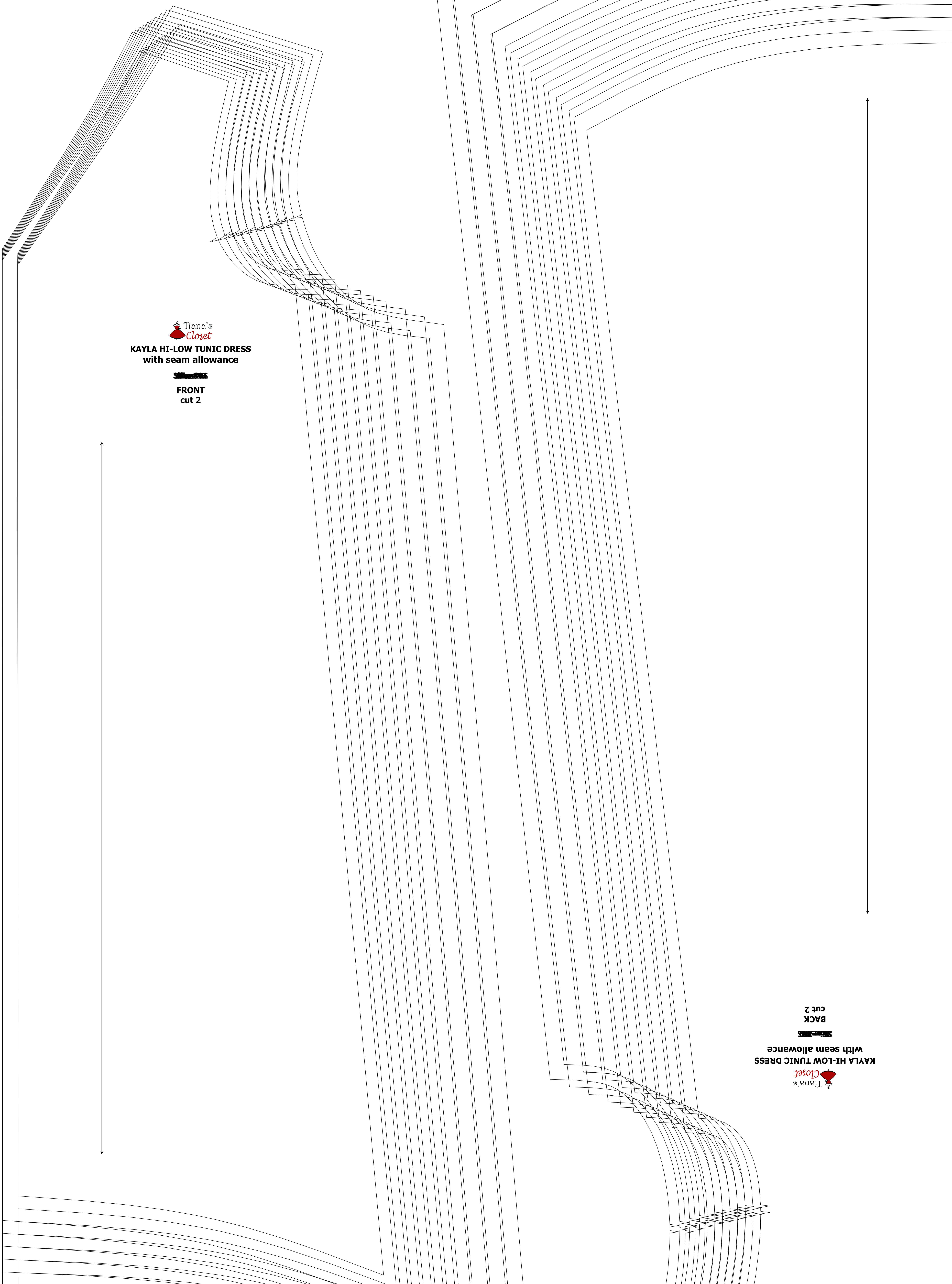
**PRINTING INSTRUCTIONS**

Tiana's Closet sewing patterns are made in standard PDF format, which means all lines are saved in one file and can be shown or hidden. It is recommended to use Adobe Acrobat Reader (paid version or trial, OK, free on Windows) or Foxit PDF Reader (free, works on Windows only) to avoid the file corruption. In order to change the zoom level, go to View > Fit of your PDF viewer, otherwise all lines might not be visible and the file will not open.

When printing the pattern, go to Print settings. In the top corner choose Custom scale: 100%. For printing on A4 paper, go to print size: 11x17 inches. Some computers print smaller than the size when you choose 100% scale, so you will have to adjust the scale to a bit larger than 100% and measure the test square if you get the true size.

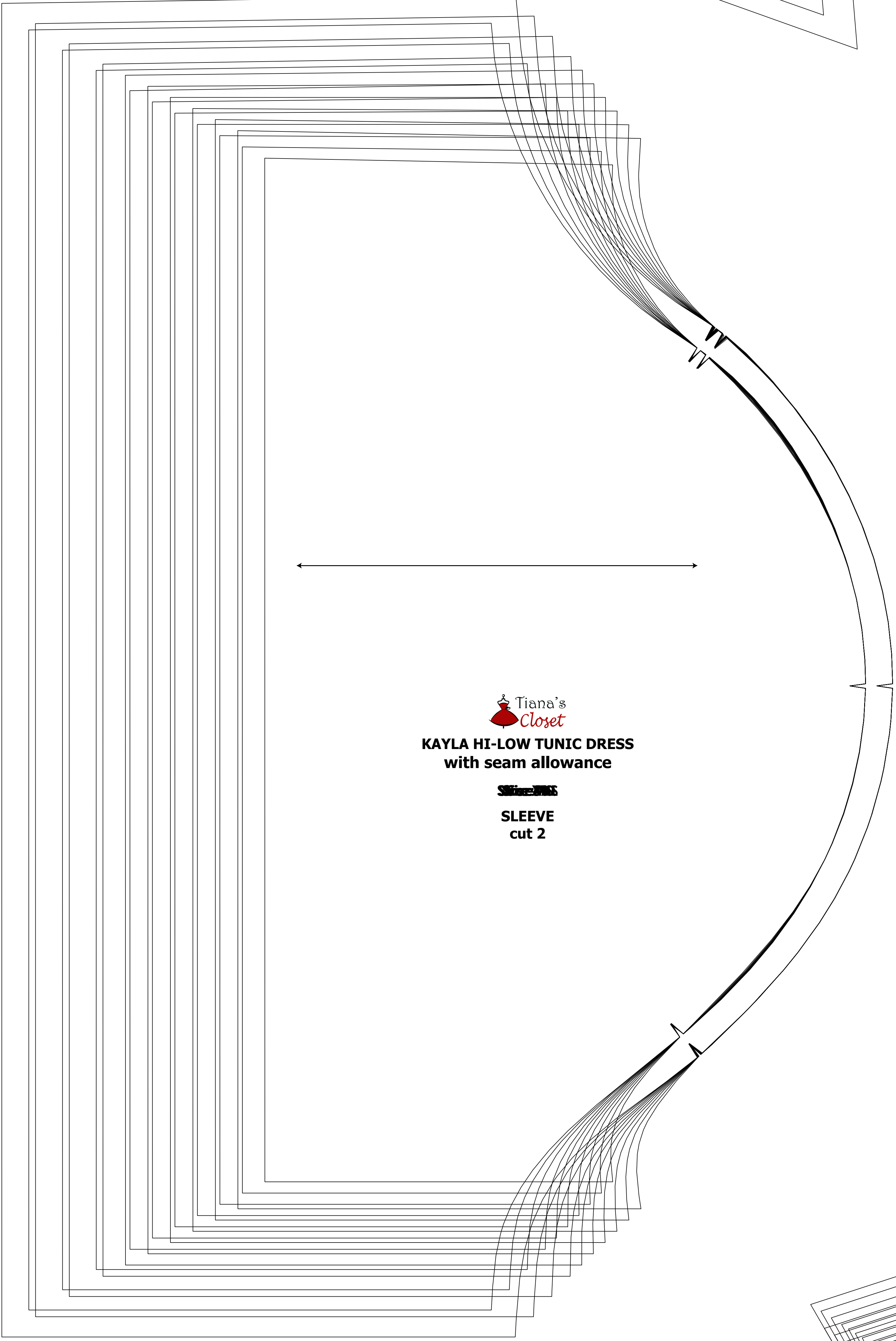
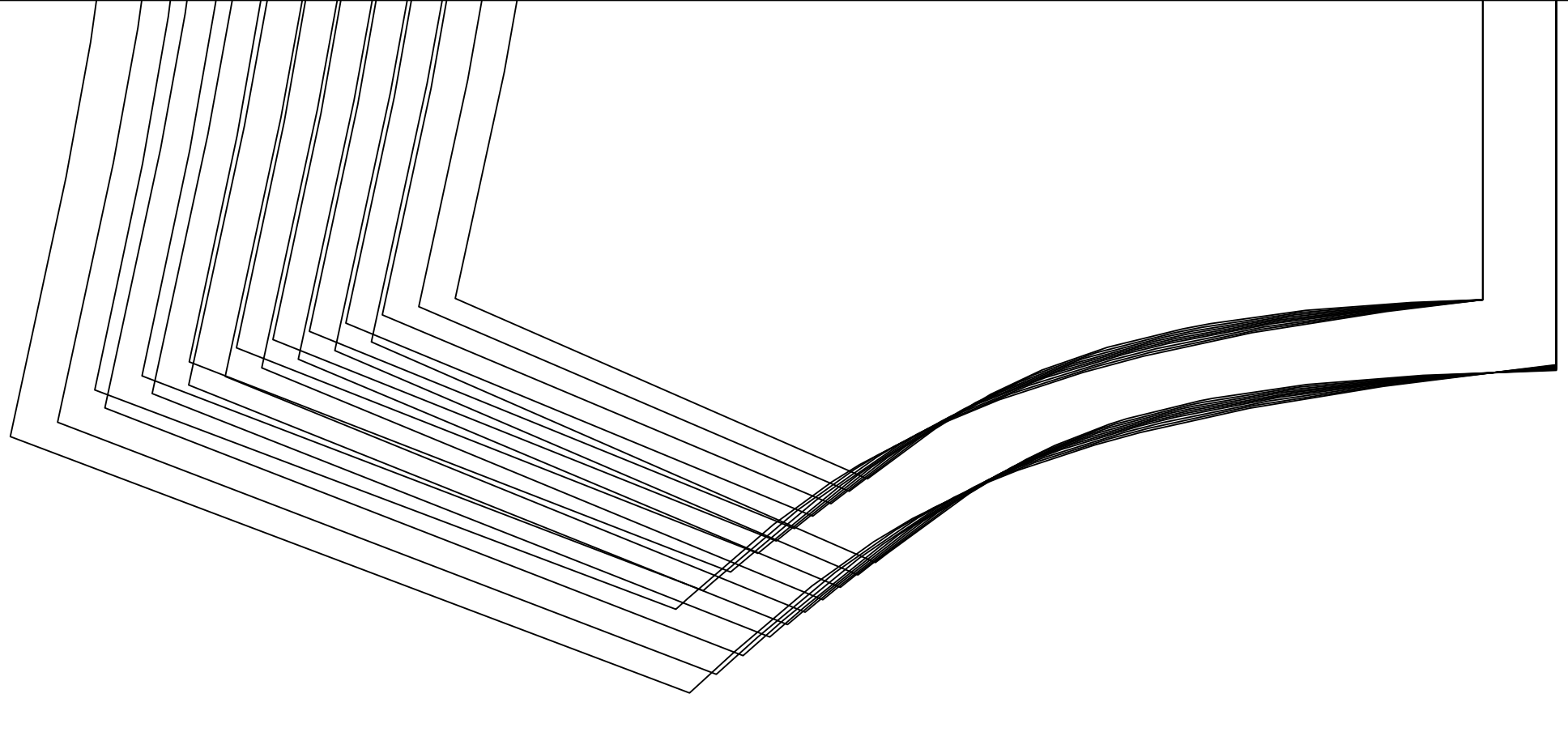
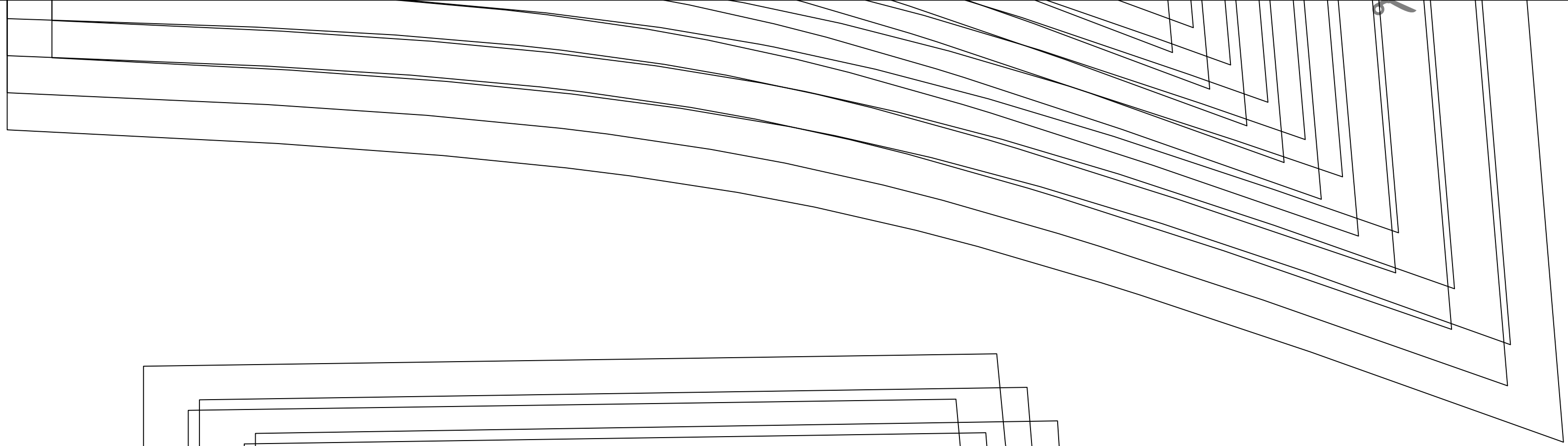
- The test square is 10 centimeters (3.937 inches) and 4 inches (10.16 cm).
- Always print the full page of the file and measure to avoid waste of paper.
- After printing the pattern, cut the paper along the lines with sharp scissors and keep the seam allowance by the amount of the pattern page. It is important to print the pattern on one page. Do not split the page in a column. Please see the page below to see how the page line is.
- You can find photo instruction for printing sewing patterns on Tiana's Closet website: <https://www.tianascloset.com/2018/05/10/how-to-print-sewing-patterns/>

**Tiana's Closet**  
**KAYLA HI-LOW TUNIC DRESS**  
**with seam allowance**  
**FRONT**  
**cut 2**



**Tiana's Closet**  
**KAYLA HI-LOW TUNIC DRESS**  
**with seam allowance**  
**BACK**  
**cut 2**





Tiana's Closet  
KAYLA HI-LOW TUNIC DRESS  
with seam allowance  
SLEEVE  
cut 2

