

SIZE TABLE
TIANA'S CLOSET SEWING PATTERNS

Size code	XXS	Xs	S	M	L	XL	XXL	3XL	4XL	5XL
Bust	30	34	36	38	40	44	48	52	56	60
Waist	24	26	28	30	32	36	40	44	48	52
Hip	34	36	38	40	42	46	50	54	58	62

PRINTING INSTRUCTIONS

Tiana's Closet sewing patterns are made in standard PDF format, which means all files are saved in one file and can be shown or hidden. It is recommended to use Adobe Acrobat Reader (available on Mac, PC, and on Windows) or Foxit Reader (free works on Windows only) to avoid the file corrupting. In order to check the document, go to View > Show Layers > Show PDF content. All content will be visible for the content area and the file will be shown.

When printing the pattern, go to Print settings. In the top right corner, choose Custom. Under: Scale: Printing: choose Actual Size to print. In the bottom right corner, choose: Print range: From the line when you choose 100% scale. So you will have to adjust the page to a size larger than 100% and increase the test square until you get the 4 in size.

The test square is 10 centimeters (3.937 inches) and 4 inches (10.16 cm).

Always print the top edge of the file and measure to avoid waste of paper.

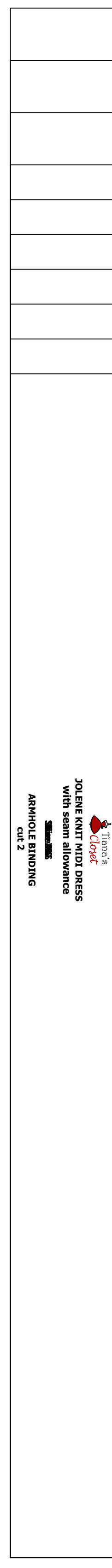
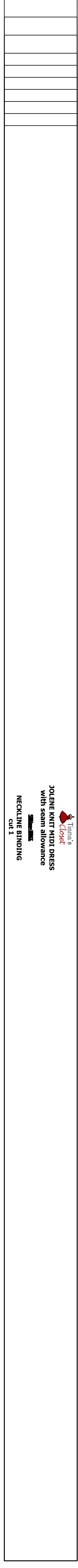
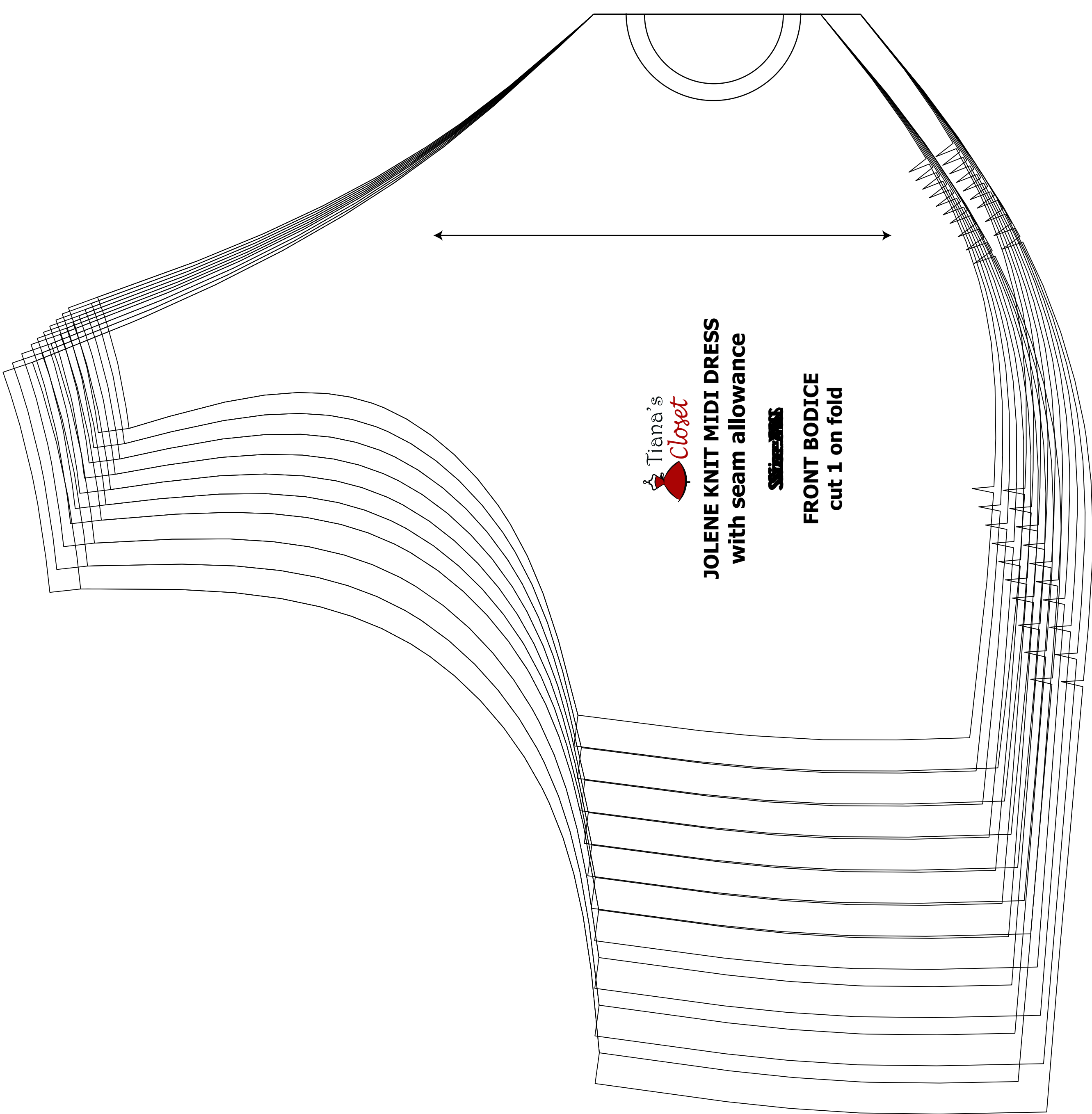
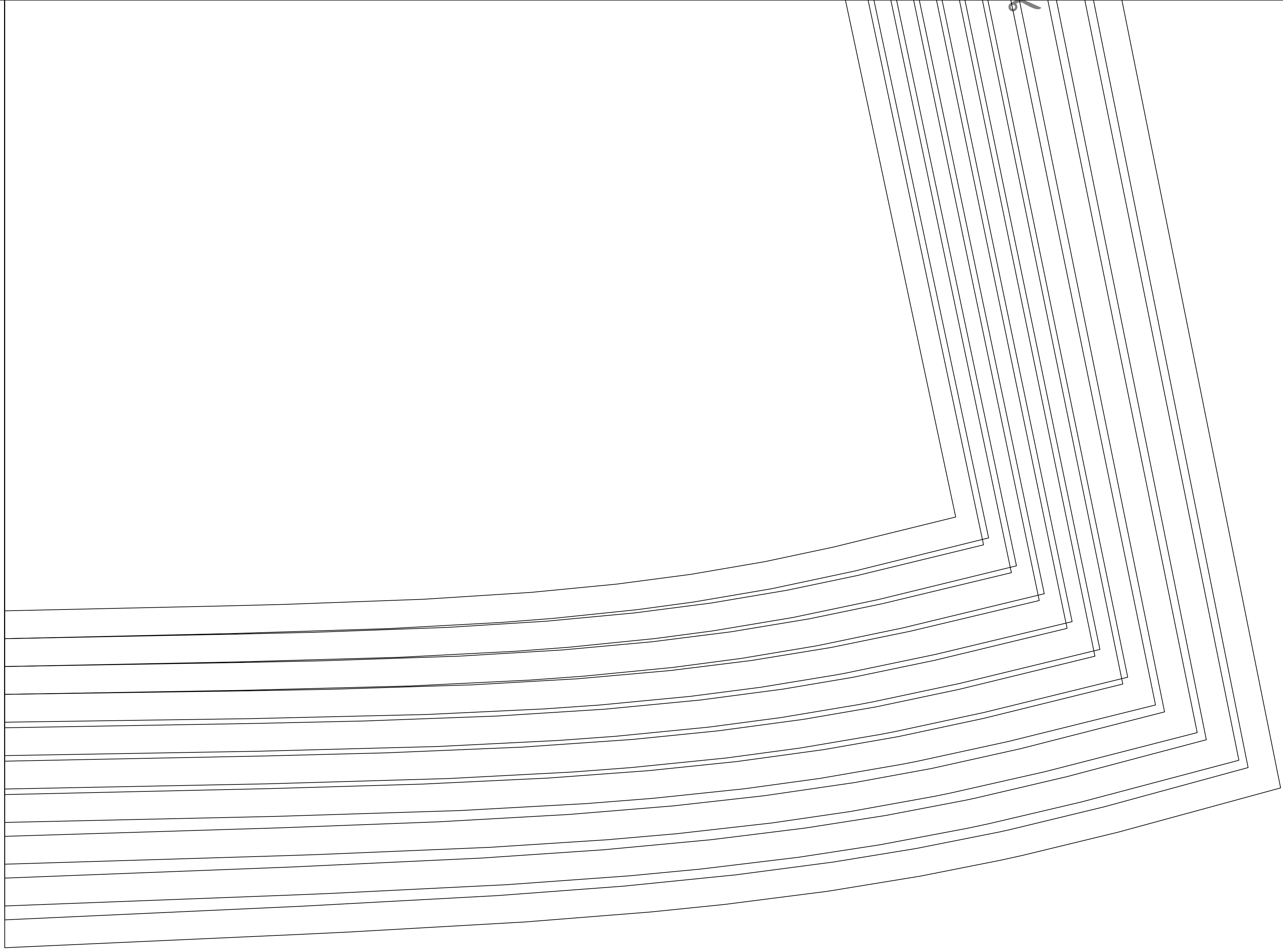
After printing the pattern, cut the paper along the lines with scissors, sharp edge and keep the paper according to the sequence. For example, page 1A is taped to page 1B in row and page 1B is taped to page 2A in a column. Please see the page below to see how the pages fit.

You can find photo instruction for printing sewing patterns on Tiana's Closet website: <https://www.tianascloset.com/2018/05/10/how-to-print-sewing-patterns/>

Tiana's Closet
JOLENE KNIT MIDI DRESS
with seam allowance

BACK
cut 1 on fold

Tiana's Closet
JOLENE KNIT MIDI DRESS
with seam allowance
FRONT SKIRT
cut 1 on fold



Tianna's
Closet

JOLENE KNIT MIDI DRESS
with seam allowance

SIZES 2-10

FRONT BODICE
cut 1 on fold

© 2011
PATTERN INSTRUCTIONS
FOR THE
JOLENE KNIT MIDI DRESS
WITH SEAM ALLOWANCE
SIZES 2-10

© 2011
PATTERN INSTRUCTIONS
FOR THE
JOLENE KNIT MIDI DRESS
WITH SEAM ALLOWANCE
SIZES 2-10