

SIZE TABLE
TIANA'S CLOSET SEWING PATTERNS

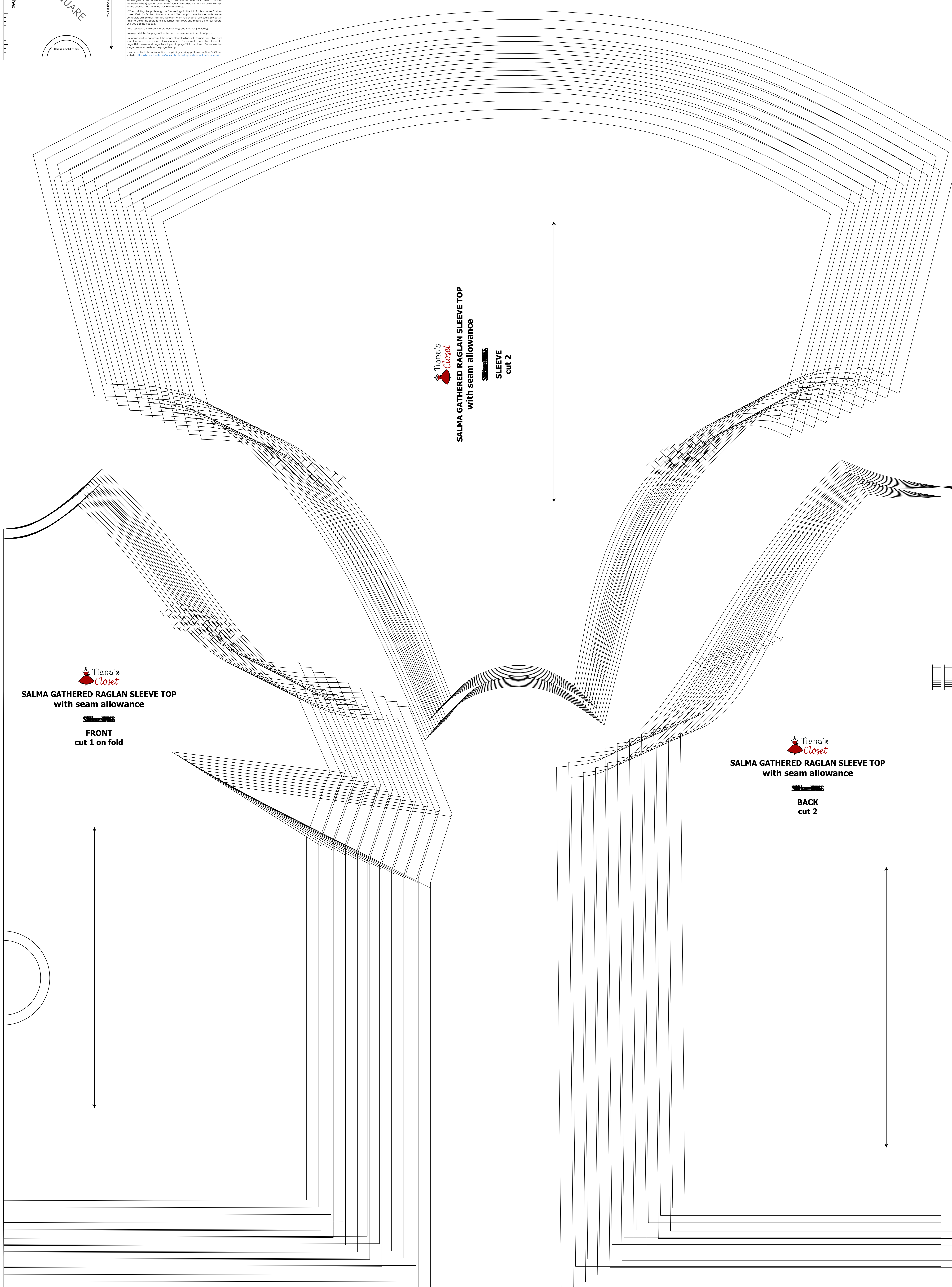
Size code	XXS	Xs	S	M	L	XL	XXL	3XL	4XL	5XL
 Bust	30	32	34	36	38	40	42	44	46	48
 Length	32	34	36	38	40	42	44	46	48	50
 Neck	28	30	32	34	36	38	40	42	44	46
 Sleeve	24	26	28	30	32	34	36	38	40	42
 Hip	34	36	38	40	42	44	46	48	50	52

PRINTING INSTRUCTIONS

- Tiana's Closet sewing patterns are made in standard PDF format, which means all files are stored in one file and can be stored or printed. It is recommended to use Adobe Acrobat Reader to open and print PDF files. You can also use any other PDF viewer that works on Windows and/or Mac OS. You can also use a printer that supports printing to a PDF file.
- When printing the pattern, go to Print settings in the top right corner. Choose Custom (not Scale) for scaling and Actual Size for print size. Do not select any other options. Print the pattern from the start when you choose Actual Size. Do not print the pattern from the middle or end of the page.
- The first column is for centimeters (centimeters) and the second (inches).
- Always print the first page of the file and measure to avoid waste of paper.
- After printing the pattern, cut the pieces along the lines with scissors, sign and fold the pieces according to the instructions. For example, page 1 is a separate piece 18 cm wide and page 2 is a separate piece 24 cm in a column. Please see the instructions to see how the pieces fit in.
- You can find photo instruction for printing sewing patterns on Tiana's Closet website: <https://www.tianascloset.com/2018/07/20/how-to-print-sewing-patterns/>

TIANA'S CLOSET
SALMA GATHERED RAGLAN SLEEVE TOP
with seam allowance

NECKLINE BINDING
cut 1 (on bias if using non-stretch, on cross grain if using stretch)



TIANA'S CLOSET
SALMA GATHERED RAGLAN SLEEVE TOP
with seam allowance

FRONT
cut 1 on fold

TIANA'S CLOSET
SALMA GATHERED RAGLAN SLEEVE TOP
with seam allowance

SLEEVE
cut 2

TIANA'S CLOSET
SALMA GATHERED RAGLAN SLEEVE TOP
with seam allowance

BACK
cut 2