

TIANA'S CLOSET SEWING PATTERNS

| SIZE TABLE | | XXXL | XXL | L | M | S | XS | XXS | XXX | XXS | XS | S | M | L | XL | XXL | XXXL |
|------------|--------|------|-----|------|----|------|----|------|-----|------|----|------|----|------|----|------|------|
| Bust | Length | 36 | 36 | 36 | 36 | 36 | 36 | 36 | 36 | 36 | 36 | 36 | 36 | 36 | 36 | 36 | 36 |
| | Width | 31.5 | 33 | 34.5 | 36 | 37.5 | 39 | 40.5 | 42 | 43.5 | 45 | 46.5 | 48 | 49.5 | 51 | 52.5 | 54 |
| Waist | Length | 48 | 48 | 48 | 48 | 48 | 48 | 48 | 48 | 48 | 48 | 48 | 48 | 48 | 48 | 48 | 48 |
| | Width | 29.5 | 31 | 32.5 | 34 | 35.5 | 37 | 38.5 | 40 | 41.5 | 43 | 44.5 | 46 | 47.5 | 49 | 50.5 | 52 |
| Hip | Length | 60 | 60 | 60 | 60 | 60 | 60 | 60 | 60 | 60 | 60 | 60 | 60 | 60 | 60 | 60 | 60 |
| | Width | 34.5 | 36 | 37.5 | 39 | 40.5 | 42 | 43.5 | 45 | 46.5 | 48 | 49.5 | 51 | 52.5 | 54 | 55.5 | 57 |

PRINTING INSTRUCTIONS

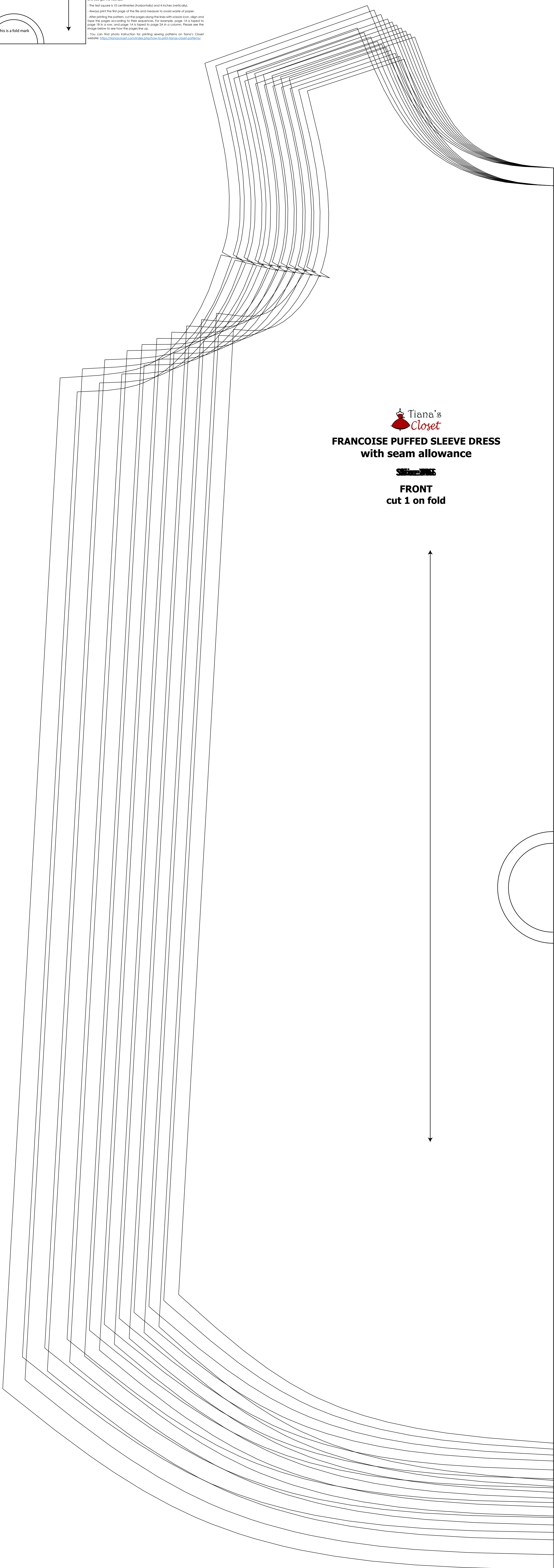
Tiana's Closet sewing patterns are made in Unisex PDF format, which means all sizes are listed on one file and can be chosen or hidden. It is recommended to use Adobe Acrobat Reader (64-bit version on 64-bit OS, free on Windows) or Ghost PDF Reader (free, works on Mac and Linux) to avoid the conflicts in order to choose the desired sizes. Go to Layers tab of your PDF reader, uncheck all boxes except for the desired sizes and the Test Square if any.

When printing the pattern, go to Print settings in the file name choose Custom, scale 100%, do nothing to crop or adjust size, to print the file. Make sure you can see the pattern lines clearly. If you have any trouble, please contact us via email: tianna@tianas-closet.com. You may have to adjust the scale to a size larger than 100% and measure the test square and to get the size.

The test square is to confirm the position (and inches) perfectly.

Always print the first edge of the file and measure to double-check of paper when printing the pattern. Cut the paper along the lines with sharp scissors and tape the paper according to the instructions. For example, page "A" is taped to page "B" to make the test square. It is taped to page "C" to confirm. Please see the images below to see how to tape the file.

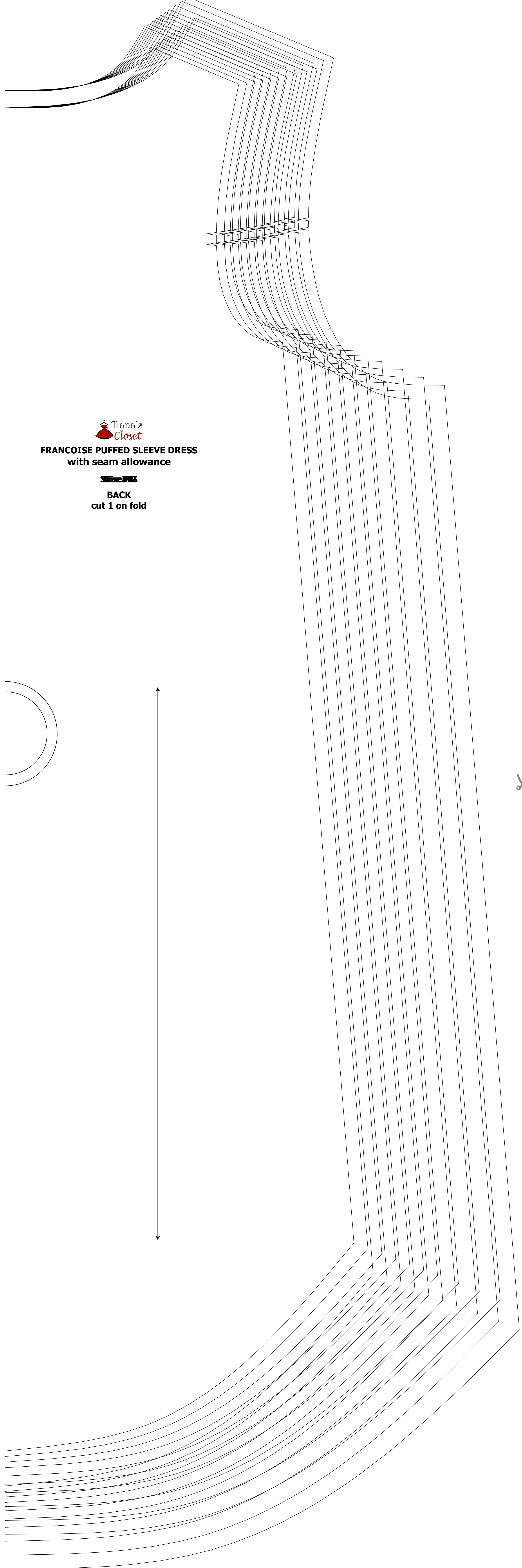
You can find photo instruction for printing sewing patterns on Tiana's Closet website: <https://www.tianas-closet.com/2016/07/26/how-to-print-sewing-patterns/>



Tiana's Closet
FRANCOISE PUFFED SLEEVE DRESS
 with seam allowance

~~SIZE: XXXL~~

FRONT
 cut 1 on fold



Tiana's Closet
FRANCOISE PUFFED SLEEVE DRESS
 with seam allowance

~~SIZE: XXXL~~

BACK
 cut 1 on fold

