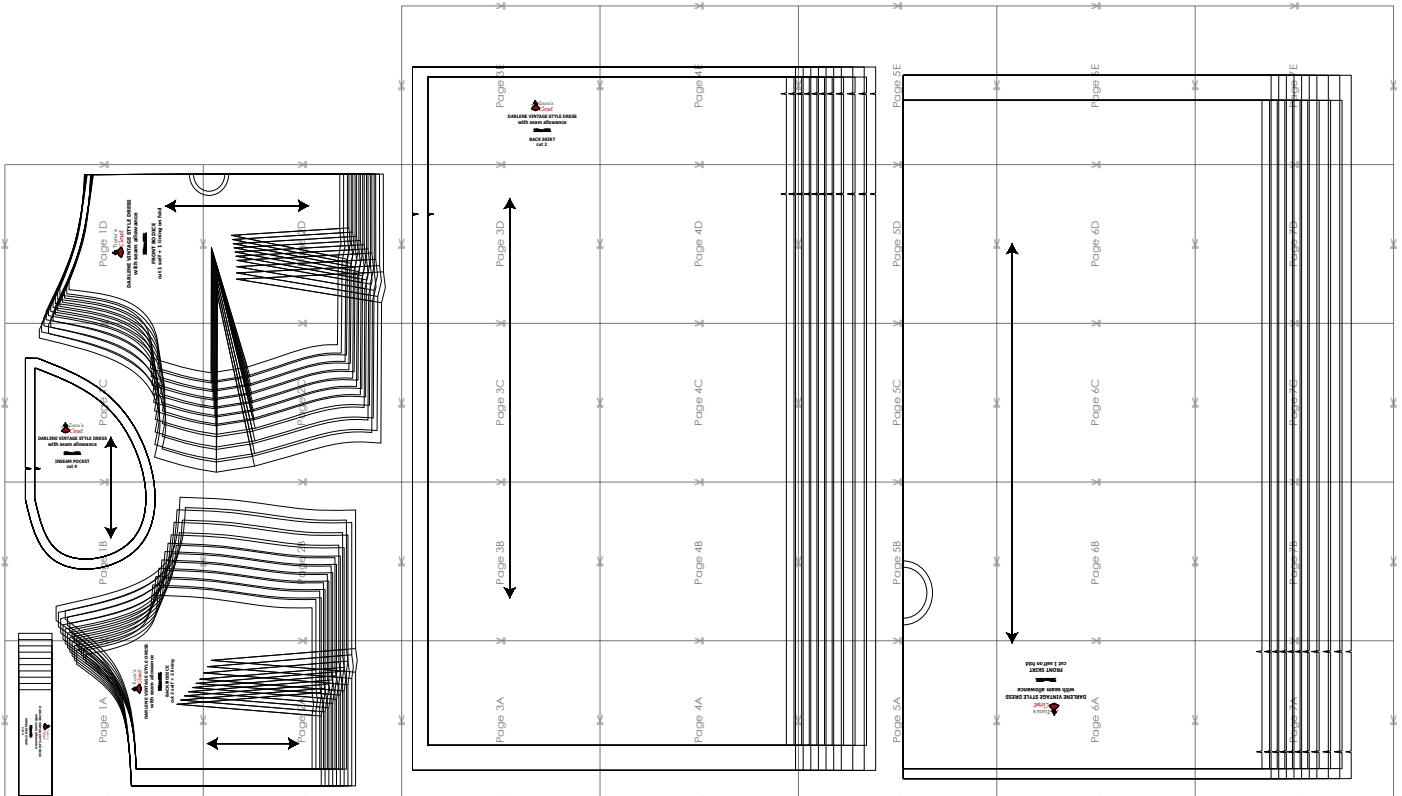


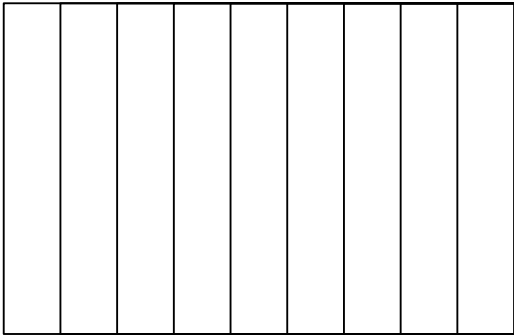
SIZE TABLE
TIANA'S CLOSET SEWING PATTERNS

Size code	XXS	XS	S	M	L	XL	XXL	3XL	4XL	5XL
Bust	centimeter	80	84	88	92	96	100	104	110	122
	inch	31.5	33.1	34.6	36.2	37.8	39.4	40.9	43.3	47.2
Waist	centimeter	60	64	68	72	76	80	84	90	102
	inch	23.6	25.2	26.8	28.3	29.9	31.5	33.1	35.4	40.2
Hip	centimeter	88	92	96	100	104	108	112	118	130
	inch	34.6	36.2	37.8	39.4	40.9	42.5	44.1	46.5	52.0

PRINTING INSTRUCTIONS

- Tiana's Closet sewing patterns are made in Layered PDF format, which means all sizes are saved in one file and can be shown or hidden. It is recommended to use Adobe Acrobat Reader (paid version on Mac OS, free on Windows) or Foxit PDF Reader (free, works on Windows only) to read the file correctly. In order to choose the desired size(s), go to Layers tab of your PDF reader, uncheck all boxes except for the desired size(s) and the box Print for all sizes.
- When printing the pattern, go to Print settings, in the tab Scale choose Custom scale: 100% (or Scaling: None or Actual Size) to print true to size. Note: some computers print smaller than true size even when you choose 100% scale, so you will have to adjust the scale to a little larger than 100% and measure the test square until you get the true size.
- The test square is 10 centimeters (horizontally) and 4 inches (vertically).
- Always print the first page of the file and measure to avoid waste of paper.
- After printing the pattern, cut the pages along the lines with scissors icon, align and tape the pages according to their sequences. For example, page 1A is taped to page 1B in a row, and page 1A is taped to page 2A in a column. Please see the image below to see how the pages line up.
- You can find photo instruction for printing sewing patterns on Tiana's Closet website: <https://tianas-closet.com/index.php/how-to-print-tianas-closet-patterns/>





**DARLENE VINTAGE STYLE DRESS
with seam allowance**

~~Size: M~~

**SHOULDER STRAP
cut 2**

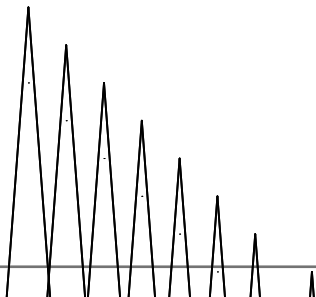
Page 1A

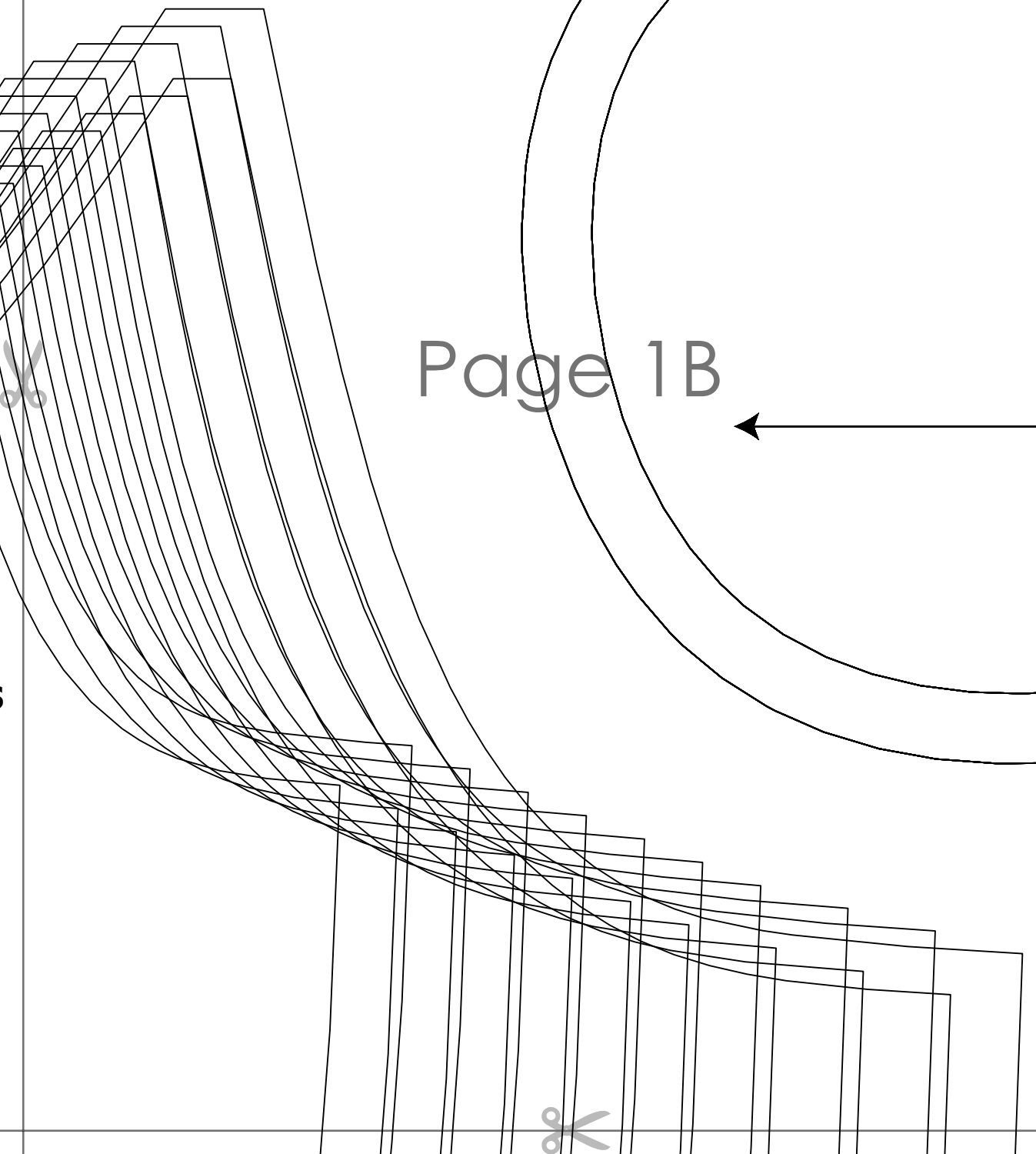


**DARLENE VINTAGE STYLE DRESS
with seam allowance**

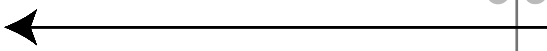
~~Size: M~~

**BACK BODICE
cut 2 self + 2 lining**





Page 1B





Tiana's
Closet

DARLENE VINTAGE STYLE DRESS
with seam allowance

SEAM ALLOWANCE

INSEAM POCKET
cut 4

Page 1C





Page 1D



**DARLENE VINTAGE STYLE DRESS
with seam allowance**

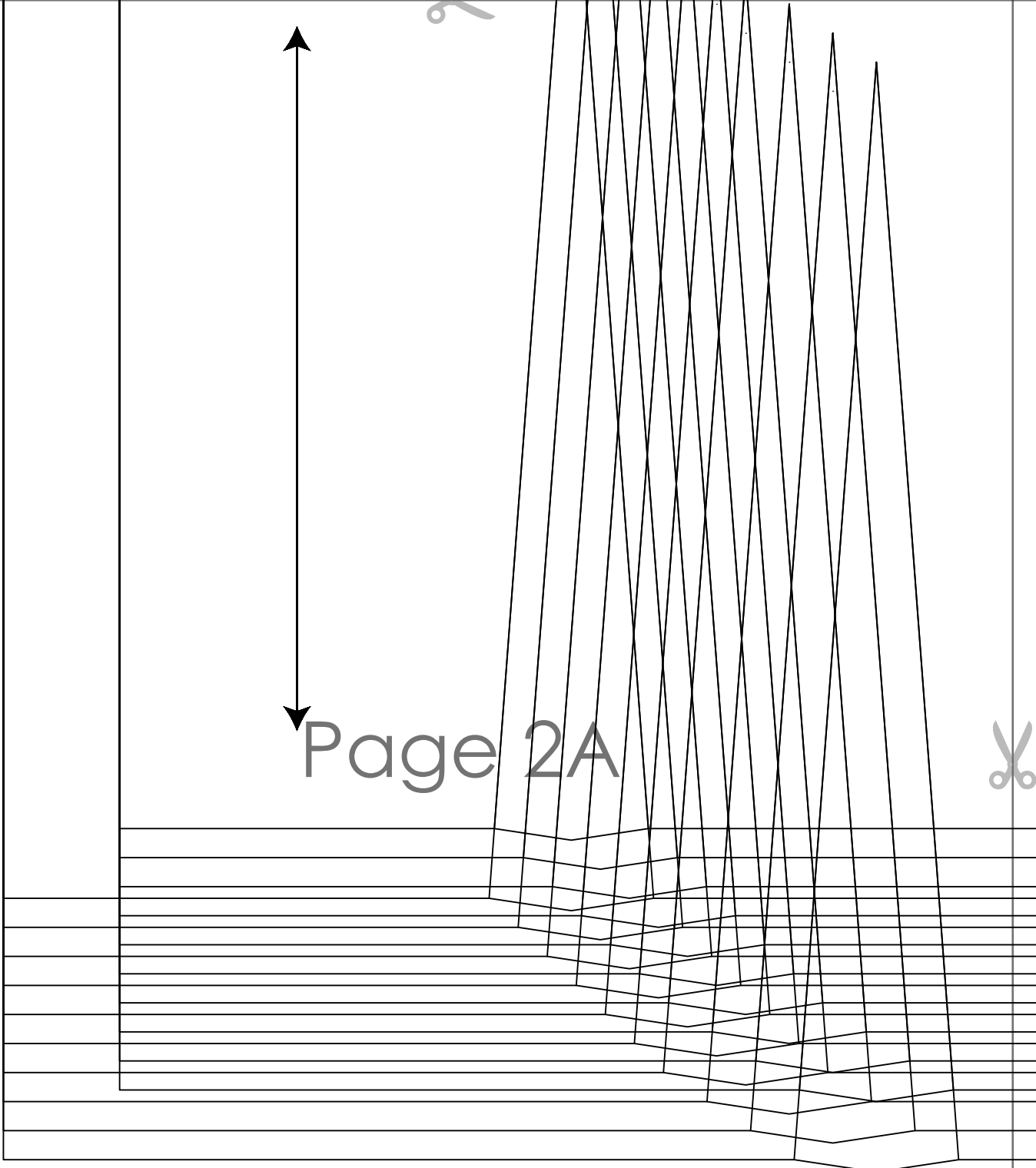
~~Size M~~

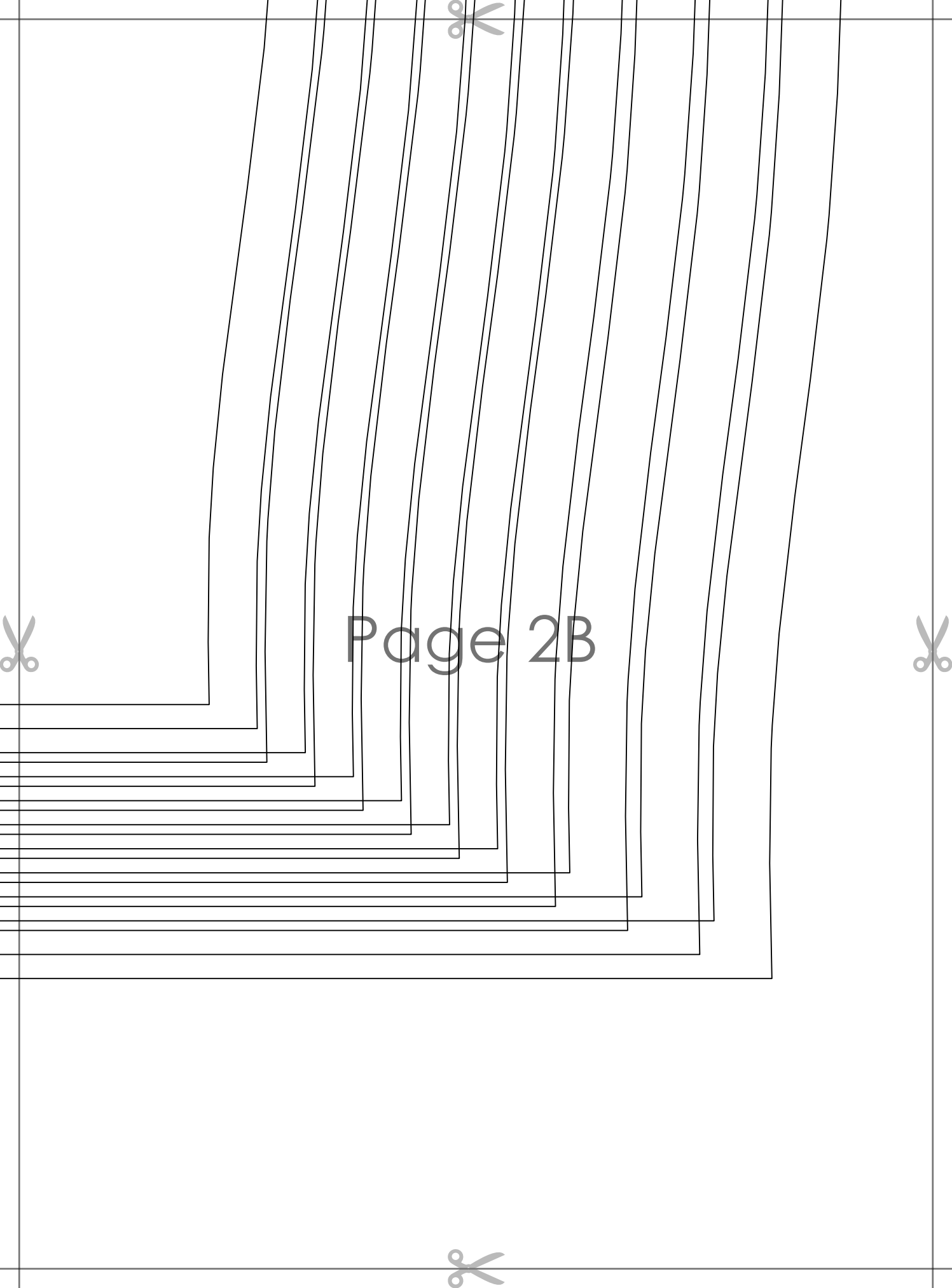
**FRONT BODICE
cut 1 self + 1 lining on fold**





Page 2A

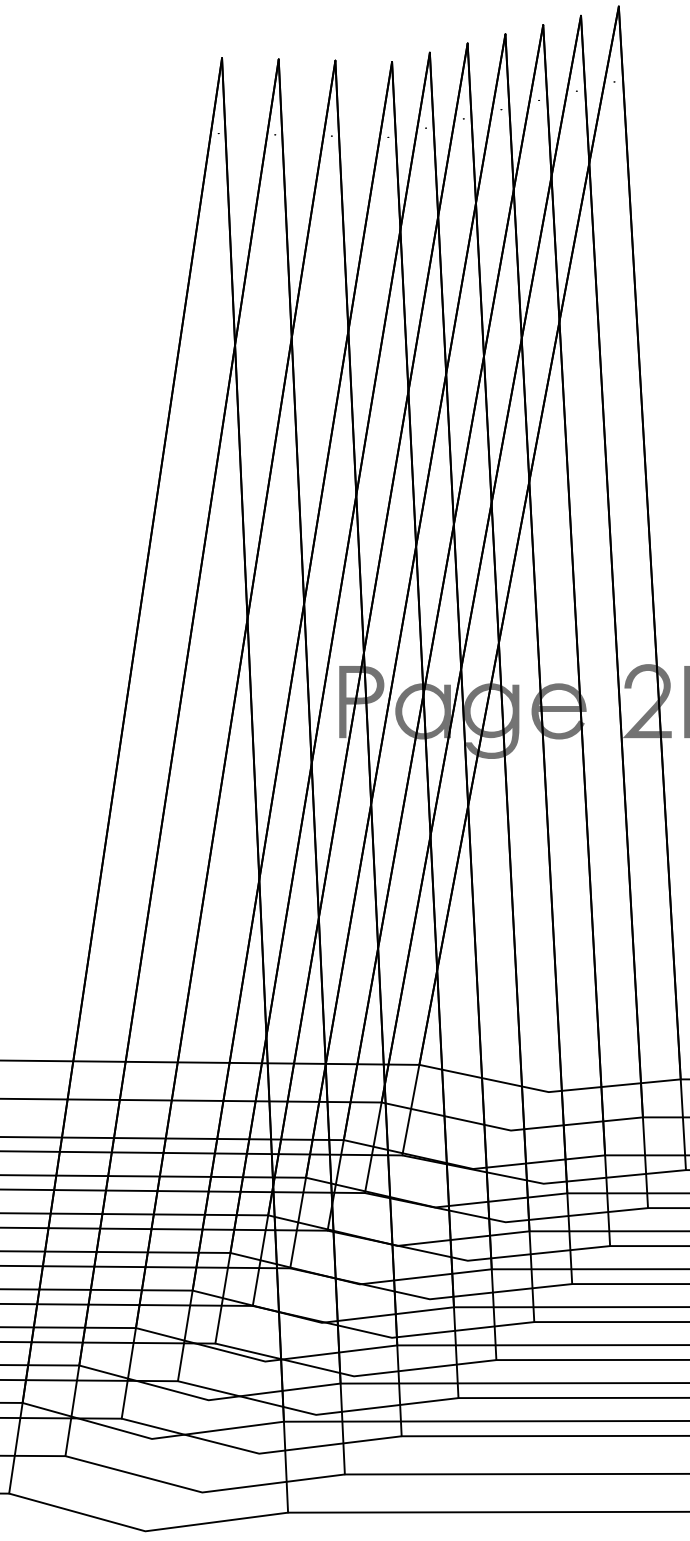
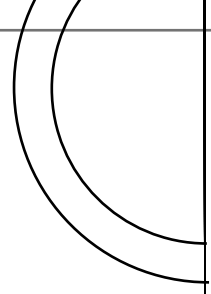
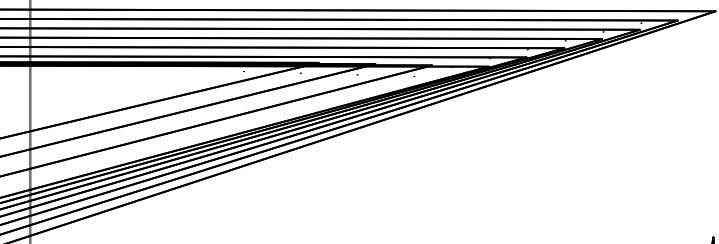




Page 2B

Page 2C





Page 2D



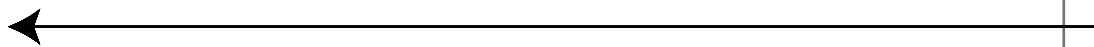


Page 3A





Page 3B





Page 3C





Page 3D



Page 3E



DARLENE VINTAGE STYLE DRESS
with seam allowance

Size 2

BACK SKIRT
cut 2



Page 4A





Page 4B





Page 4C





Page 4D



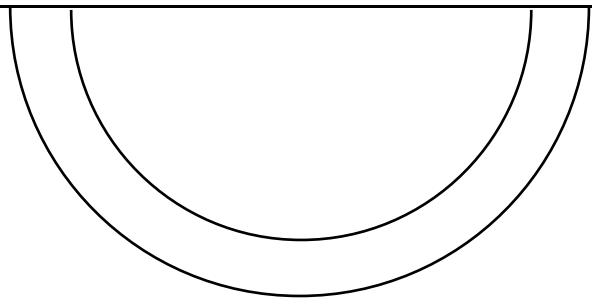


Page 4E





Page 5B





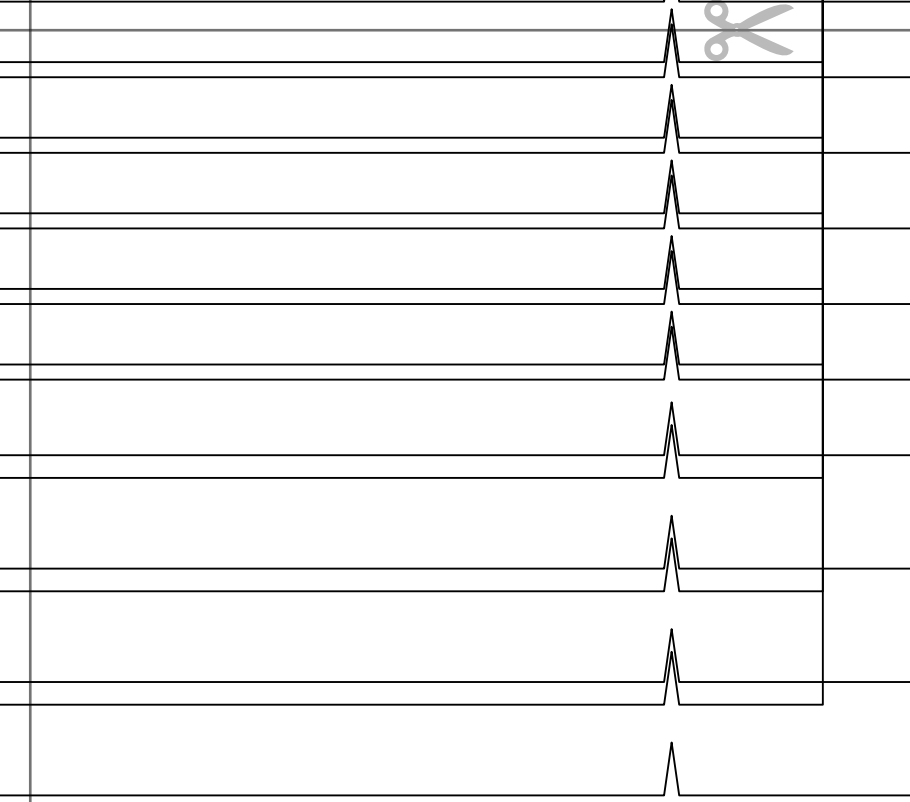
Page 5C





Page 5D





Page 5E



Page 6A



DARLENE VINTAGE STYLE DRESS
with seam allowance

~~SKIRT~~

FRONT SKIRT
cut 1 self on fold





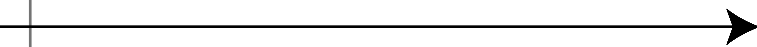
Page 6B





Page 6C





Page 6D





Page 6E





Page 7A





Page 7B





Page 7C





Page 7D





Page 7E

