

SIZE TABLE

TIANA'S CLOSET SEWING PATTERNS

Size code	XXS	XS	S	M	L	XL	XXL	3XL	4XL	5XL
Bust	centimeter	80	84	88	92	96	100	104	110	122
	inch	31.5	33.1	34.6	36.2	37.8	39.4	40.9	43.3	47.2
Waist	centimeter	60	64	68	72	76	80	84	90	102
	inch	23.6	25.2	26.8	28.3	29.9	31.5	33.1	35.4	40.2
Hip	centimeter	88	92	96	100	104	108	112	118	130
	inch	34.6	36.2	37.8	39.4	40.9	42.5	44.1	46.5	52.0

PRINTING INSTRUCTIONS

- Tiana's Closet sewing patterns are made in Layered PDF format, which means all sizes are saved in one file and can be shown or hidden. It is recommended to use Adobe Acrobat Reader (paid version on Mac OS, free on Windows) or Foxit PDF Reader (free, works on Windows only) to read the file correctly. In order to choose the desired size(s), go to Layers tab of your PDF reader, uncheck all boxes except for the desired size(s) and the box Print for all sizes.

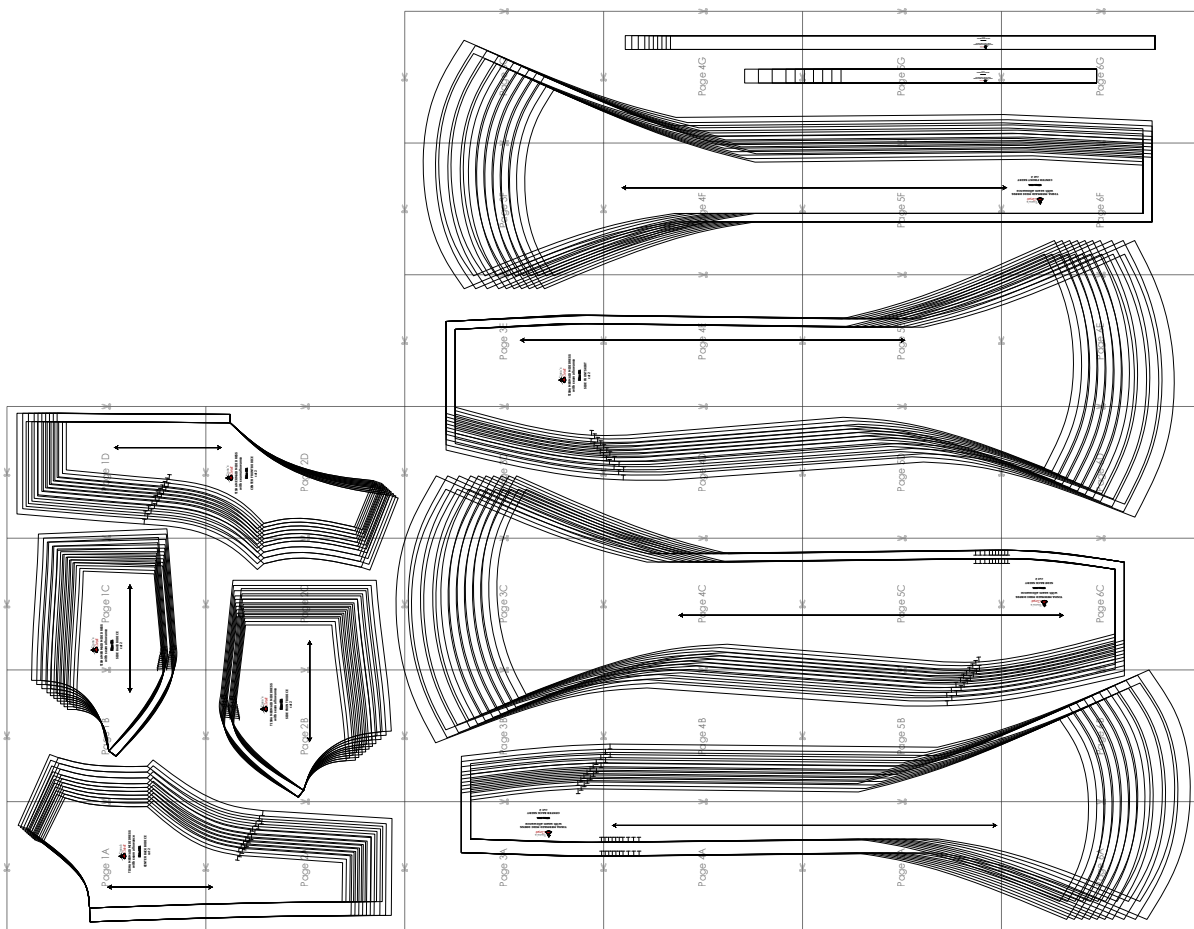
- When printing the pattern, go to Print settings, in the tab Scale choose Custom scale: 100% (or Scaling: None or Actual Size) to print true to size. Note: some computers print smaller than true size even when you choose 100% scale, so you will have to adjust the scale to a little larger than 100% and measure the test square until you get the true size.

- The test square is 10 centimeters (horizontally) and 4 inches (vertically).

- Always print the first page of the file and measure to avoid waste of paper.

- After printing the pattern, cut the pages along the lines with scissors icon, align and tape the pages according to their sequences. For example, page 1A is taped to page 1B in a row, and page 1A is taped to page 2A in a column. Please see the image below to see how the pages line up.

- You can find photo instruction for printing sewing patterns on Tiana's Closet website: <https://tianasclot.com/index.php/how-to-print-tianas-closet-patterns/>



For more ideas and free sewing patterns, visit <http://tianasclot.com>

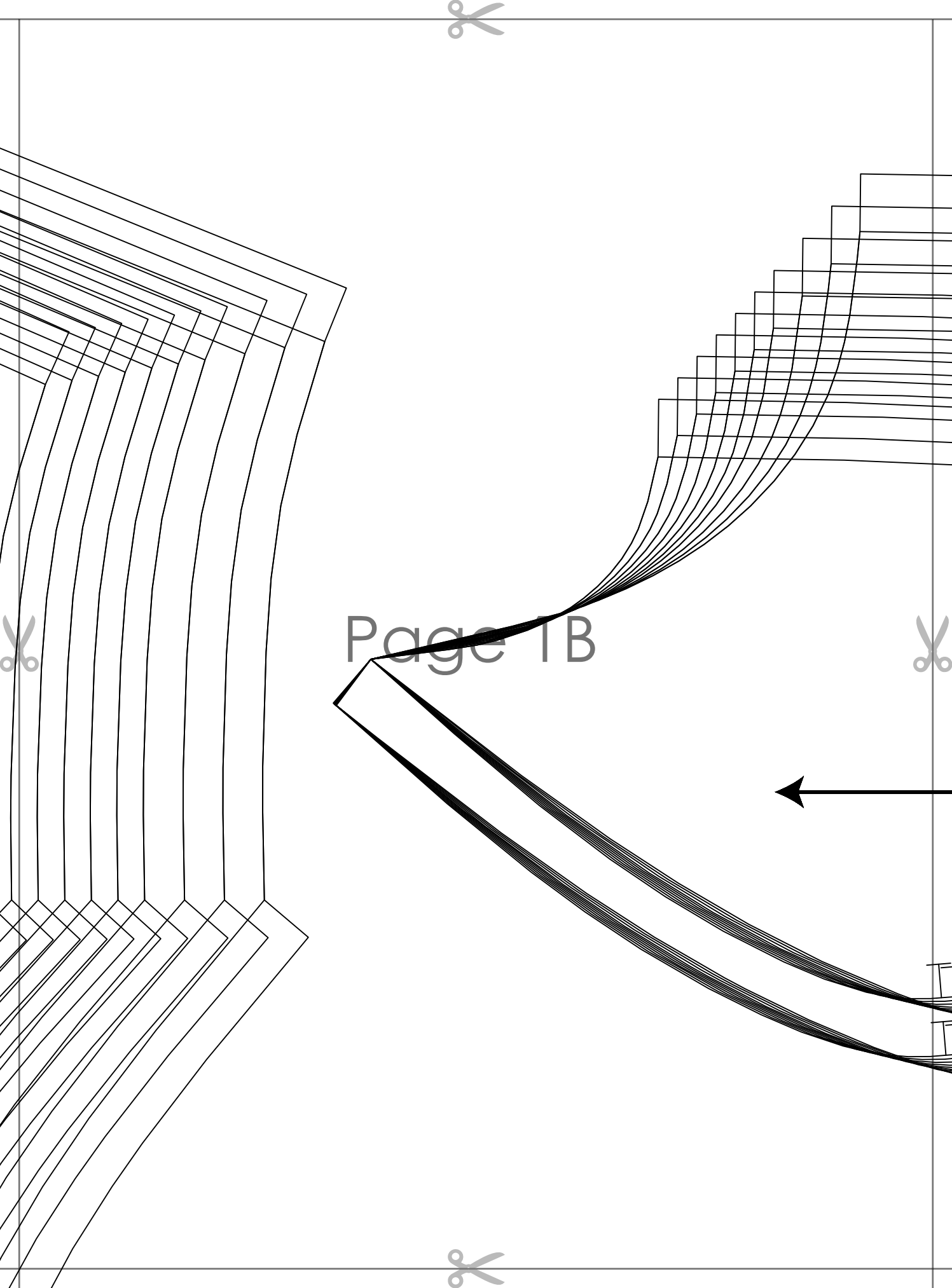
Page 1A



**TISHA MERMAID MIDI DRESS
with seam allowance**

~~Size 10~~

**CENTER BACK BODICE
cut 2**



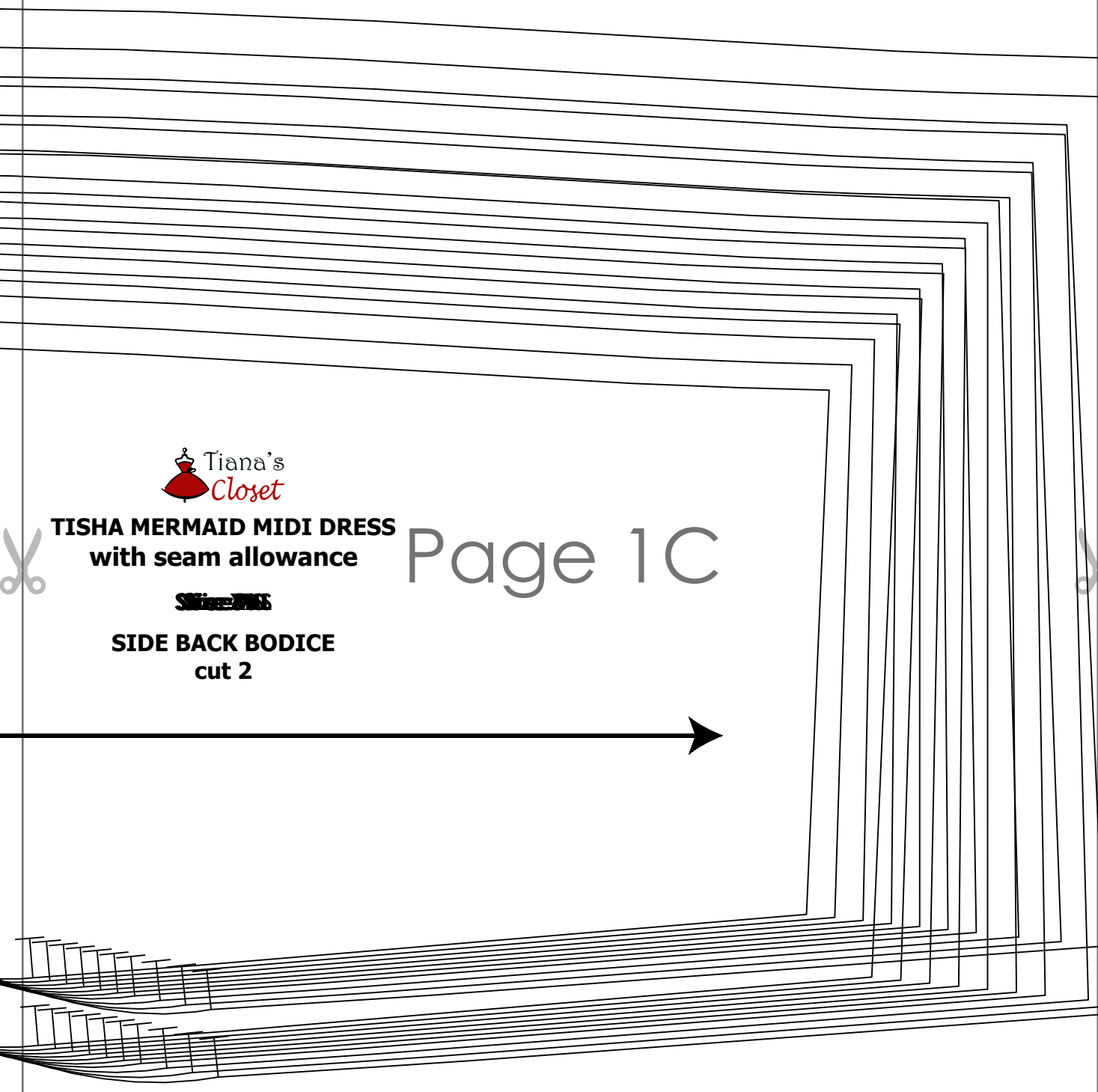


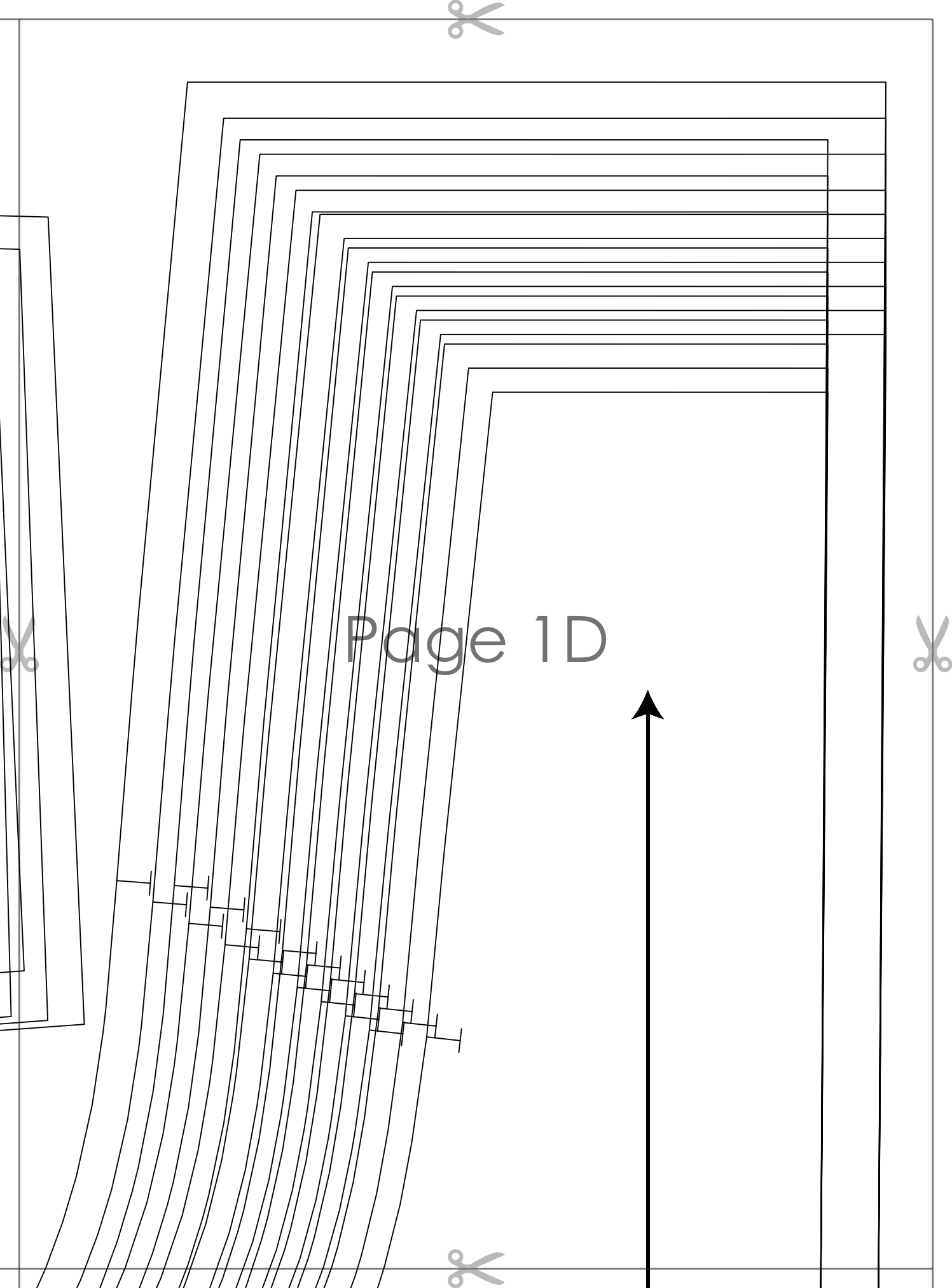
TISHA MERMAID MIDI DRESS
with seam allowance

Size M

SIDE BACK BODICE
cut 2

Page 1C





Page 1D



Page 2A



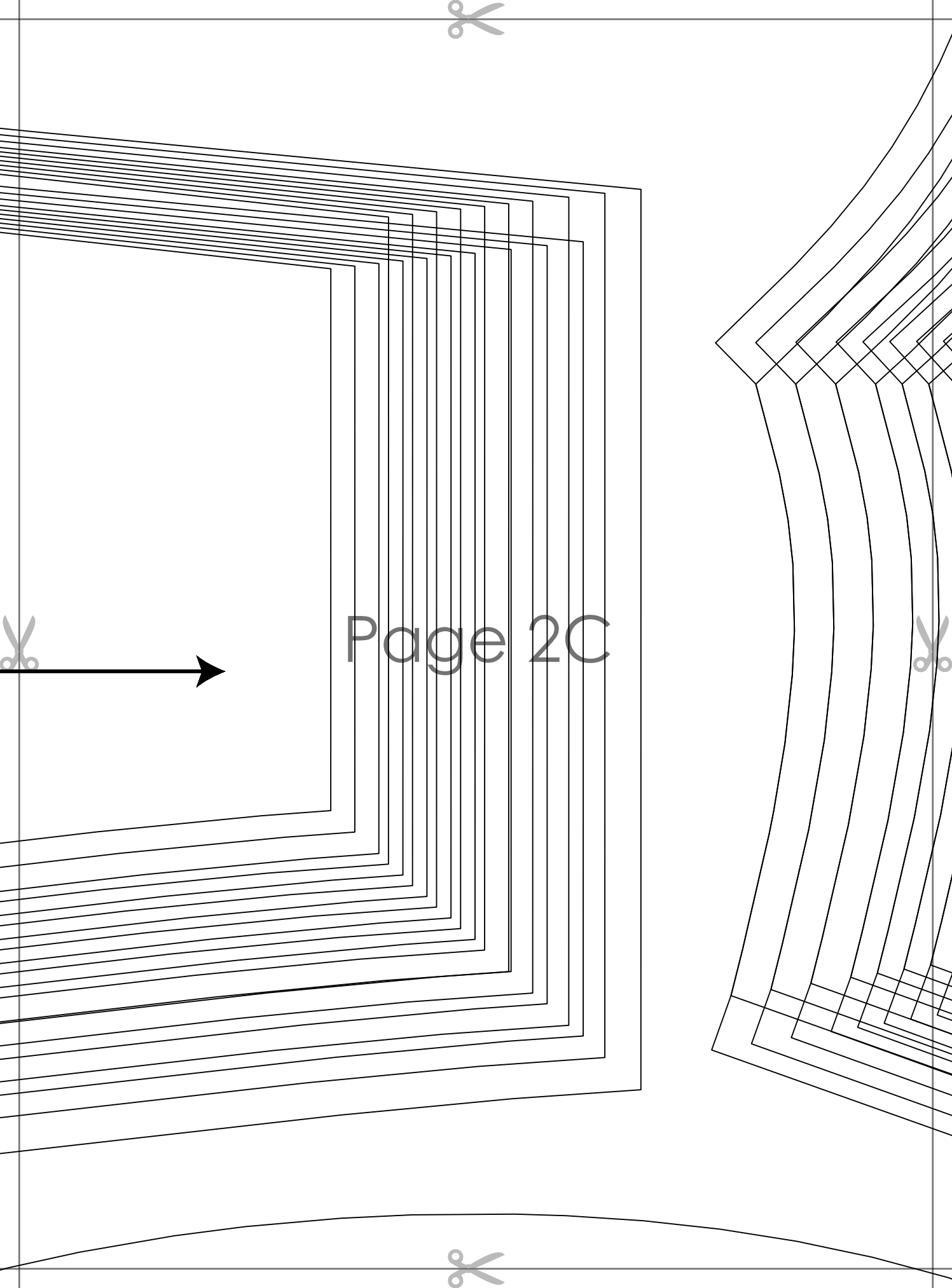


TISHA MERMAID MIDI DRESS
with seam allowance

~~Size: M~~

SIDE FRONT BODICE
cut 2

Page 2B



Page 2C



TISHA MERMAID MIDI DRESS
with seam allowance

~~Size M~~

CENTER FRONT BODICE
cut 2

Page 2D

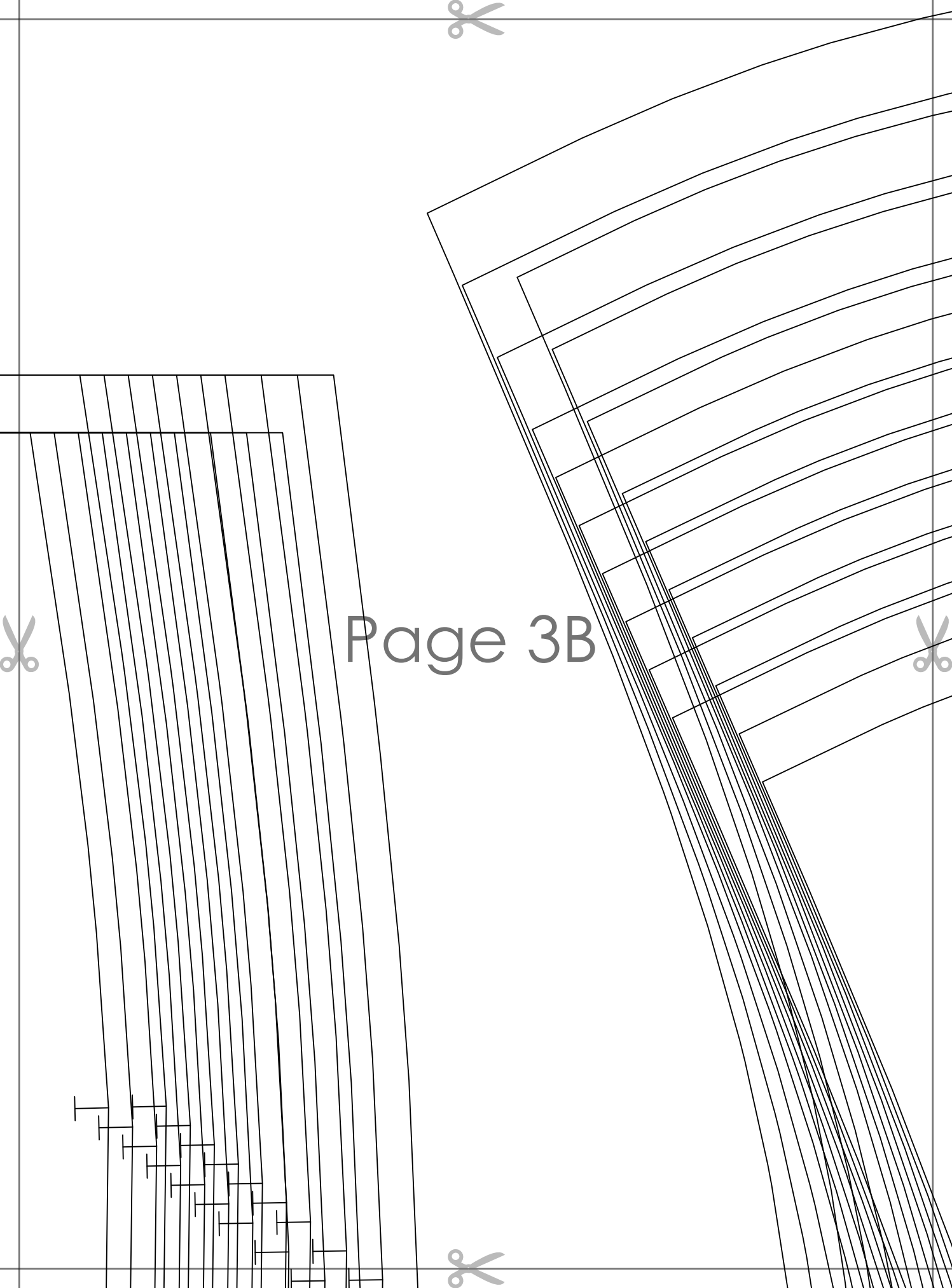
Page 3A



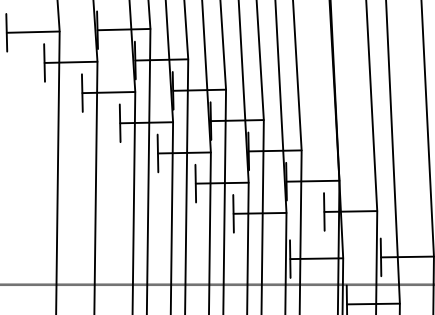
TISHA MERMAID MIDI DRESS
with seam allowance

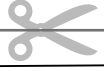
SWIMSUIT

CENTER BACK SKIRT
cut 2



Page 3B

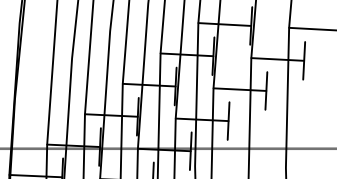




Page 3C



Page 3D



Page 3E



TISHA MERMAID MIDI DRESS
with seam allowance

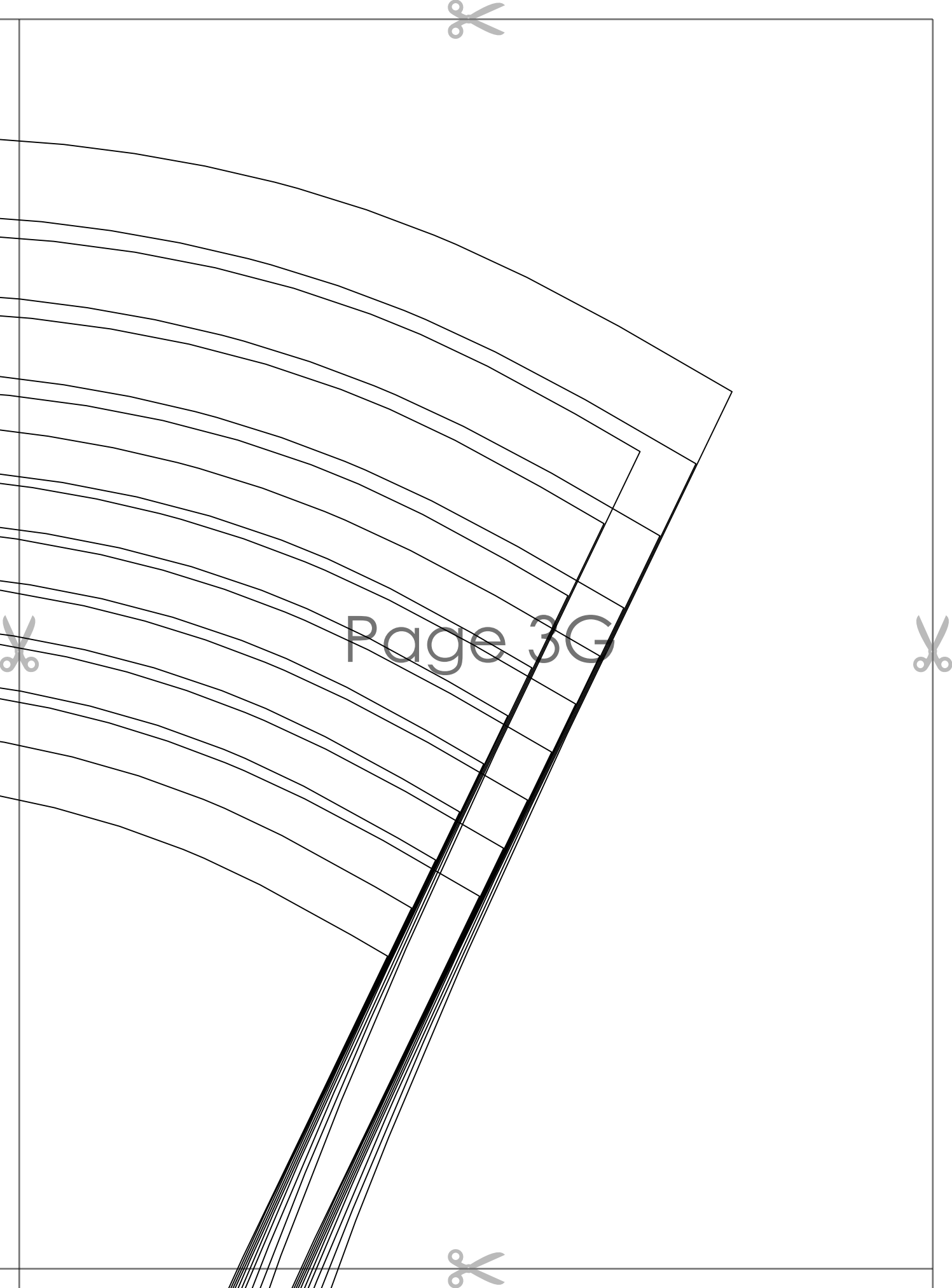
~~Size: M~~

SIDE FRONT SKIRT
cut 2

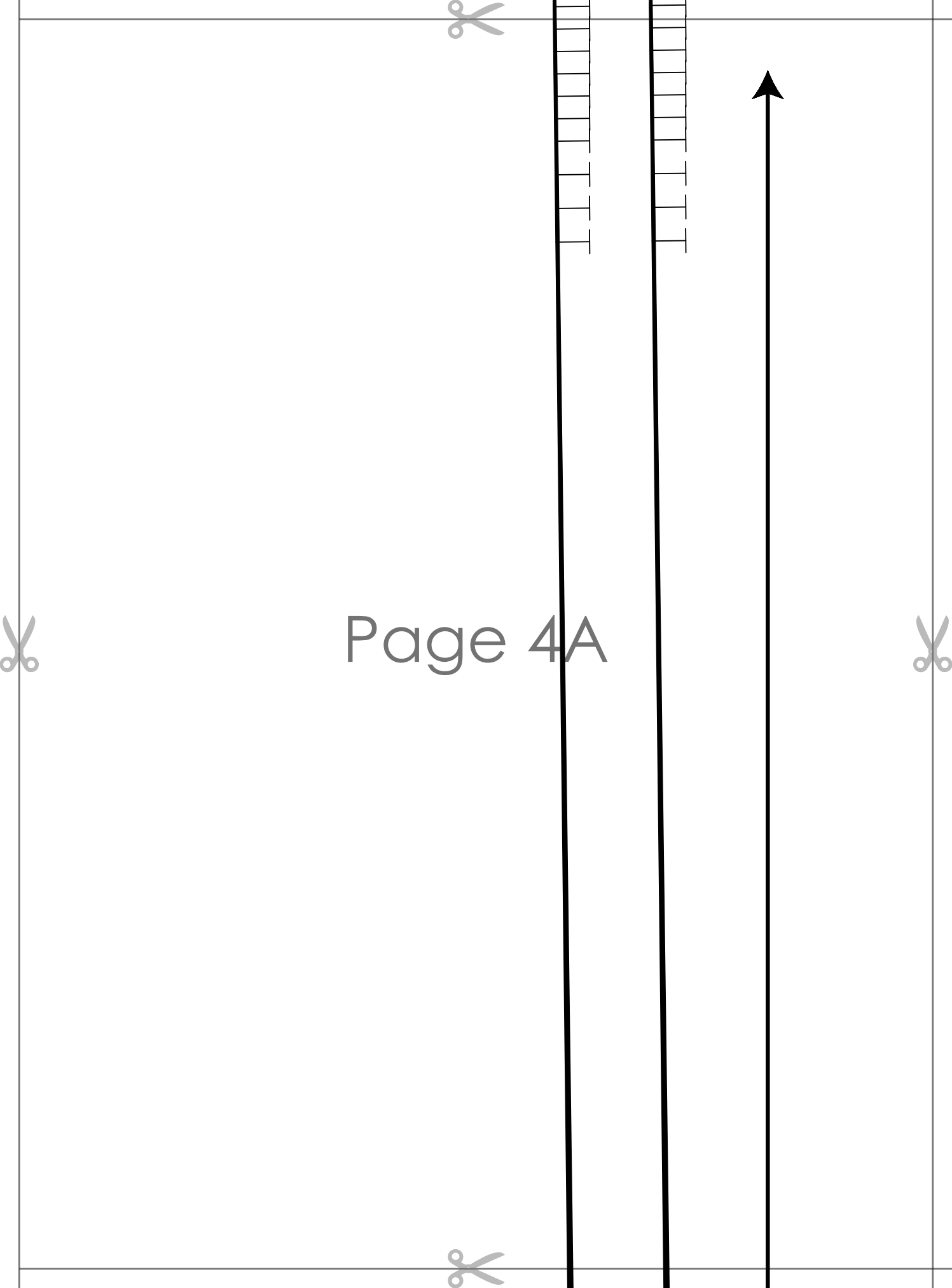


Page 3F

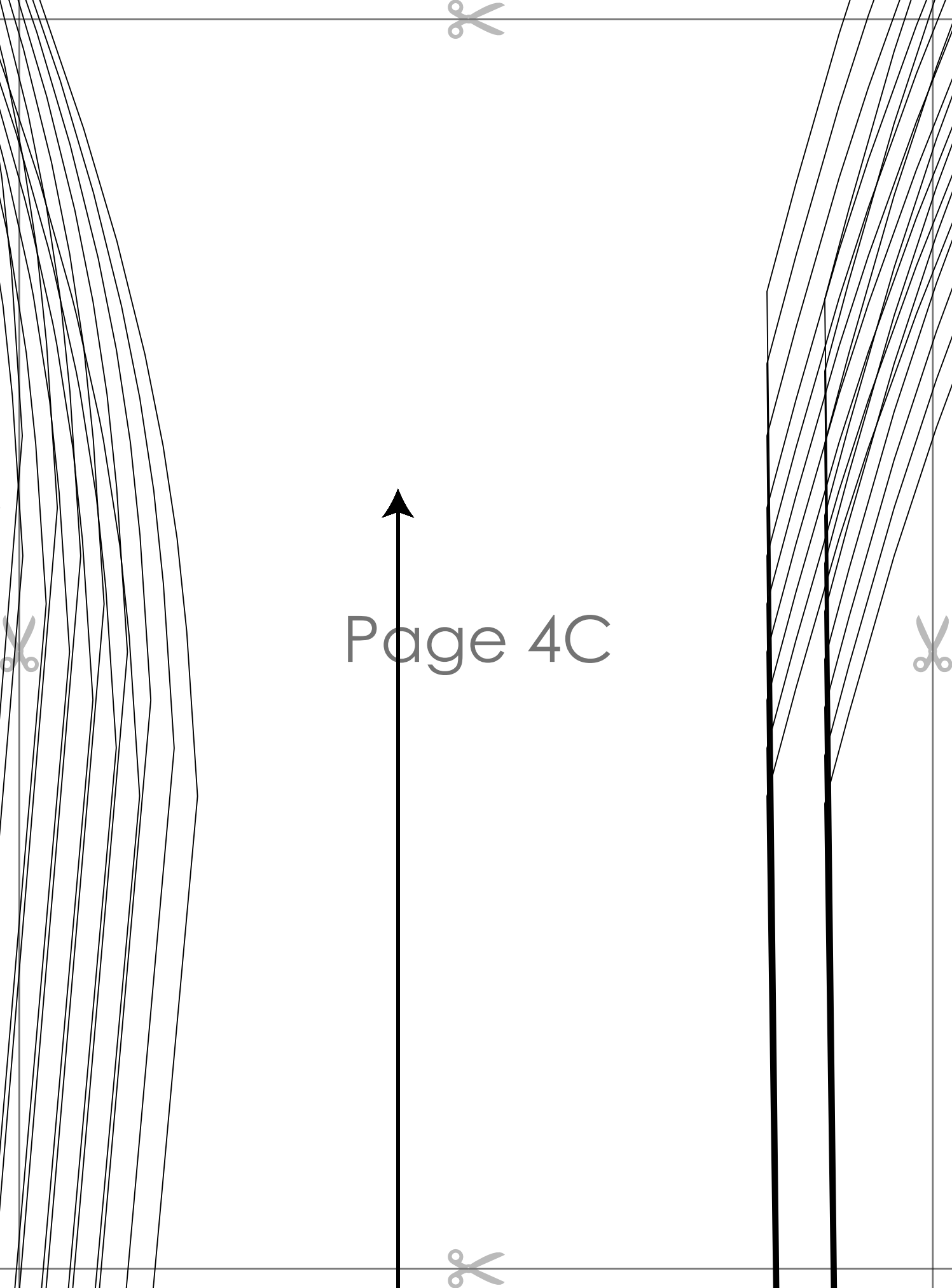




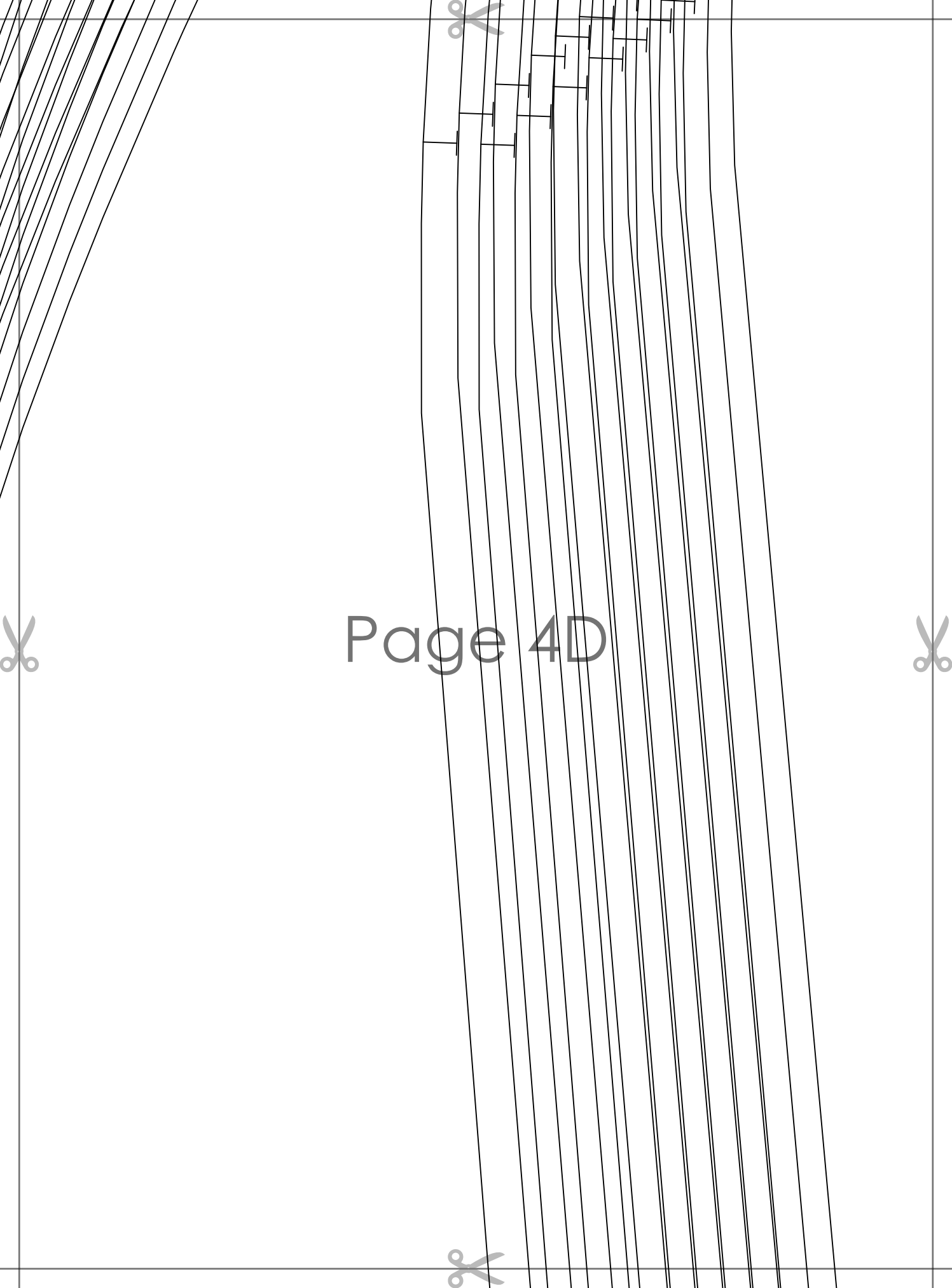
Page 3G



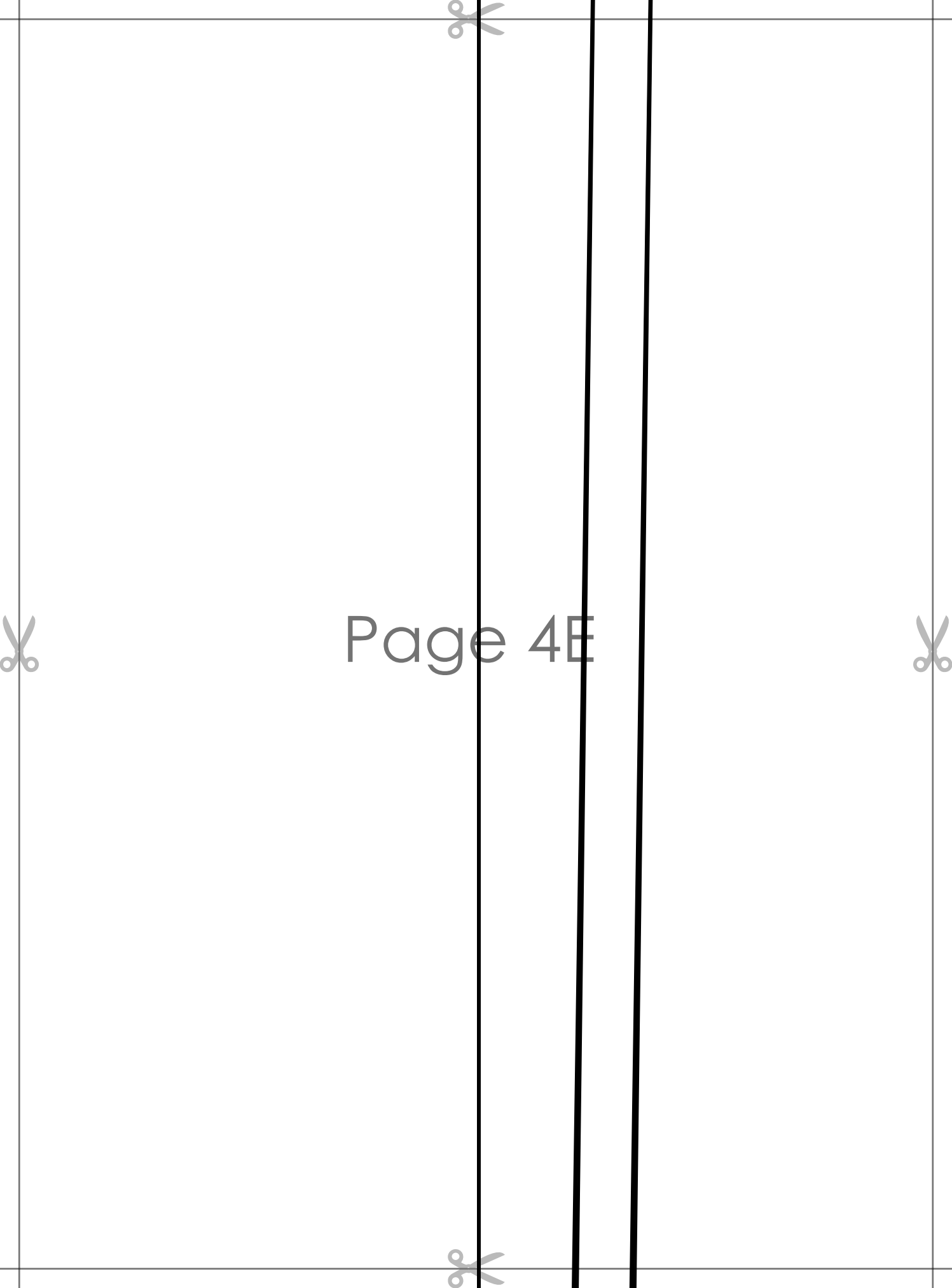
Page 4B



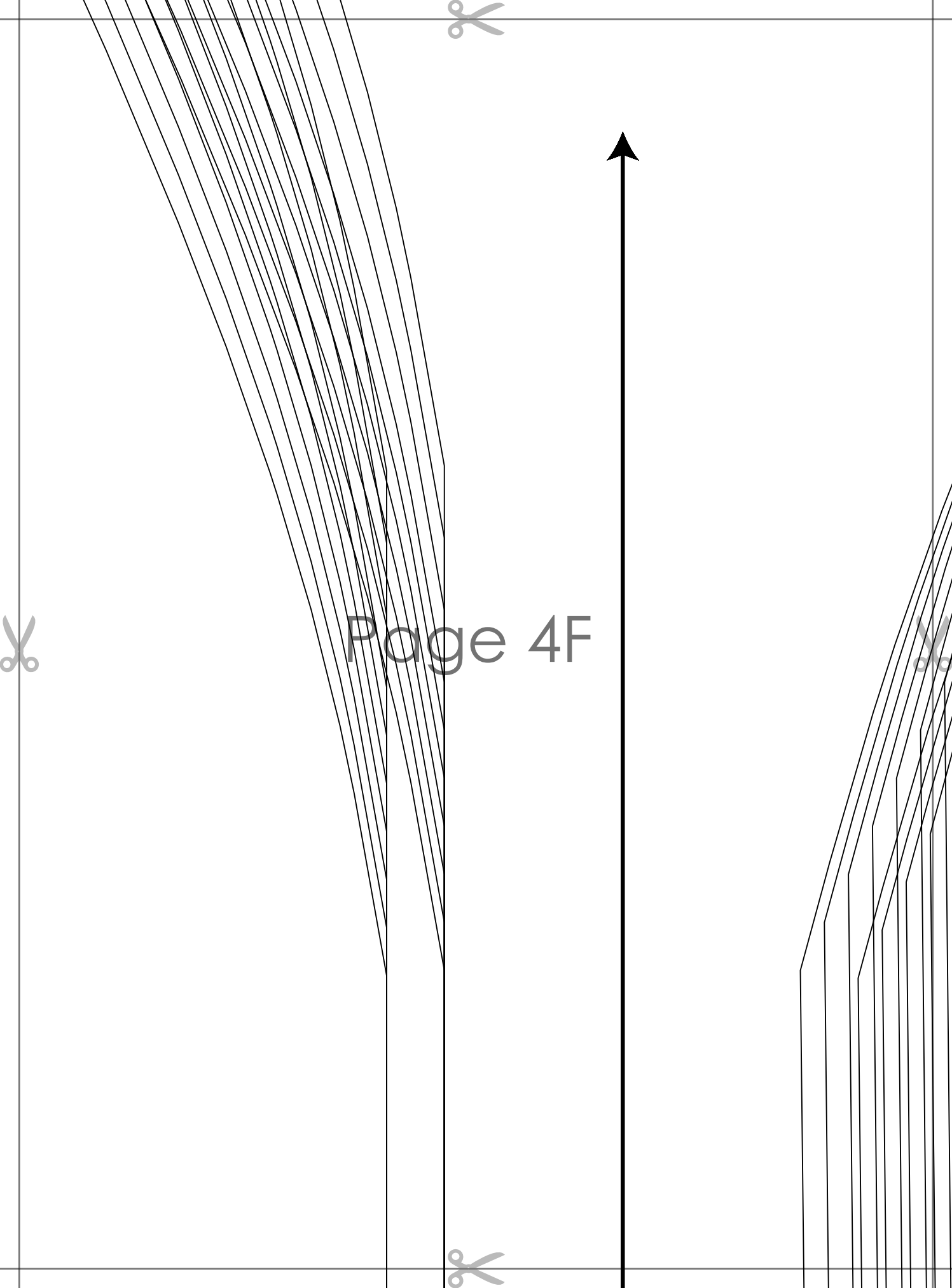
Page 4C



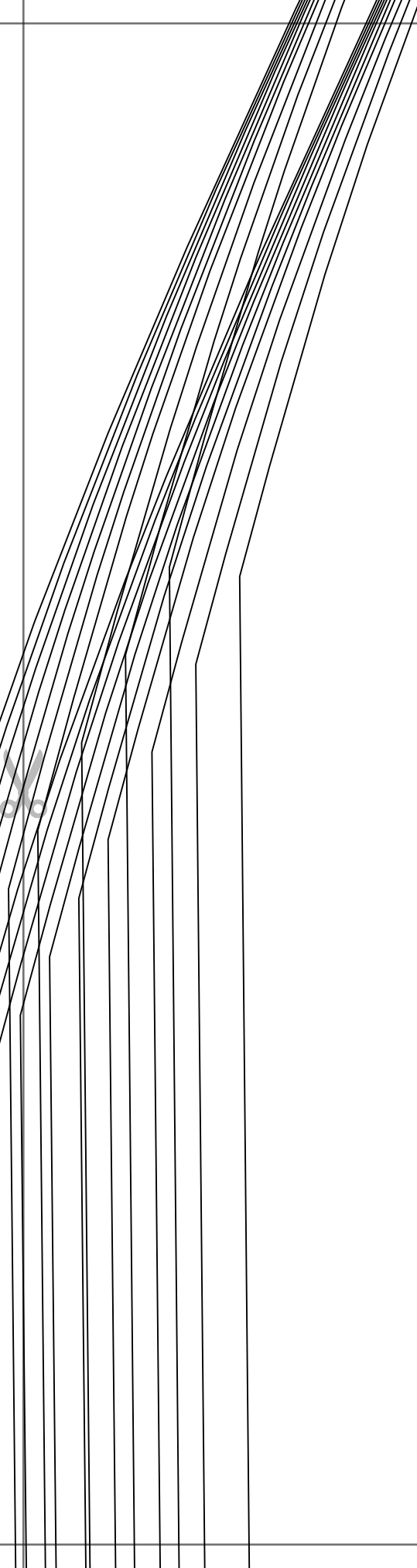
Page 4D



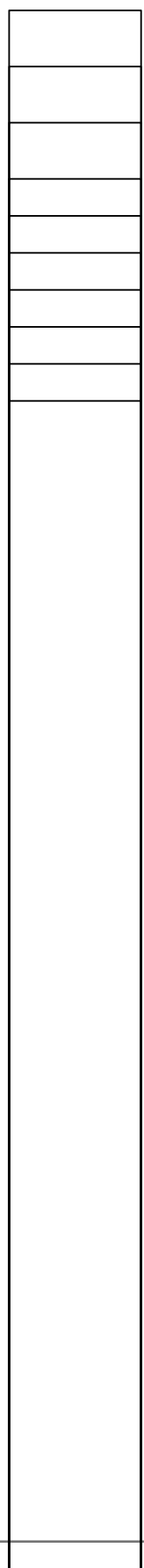
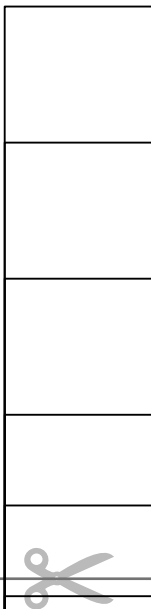
Page 4E

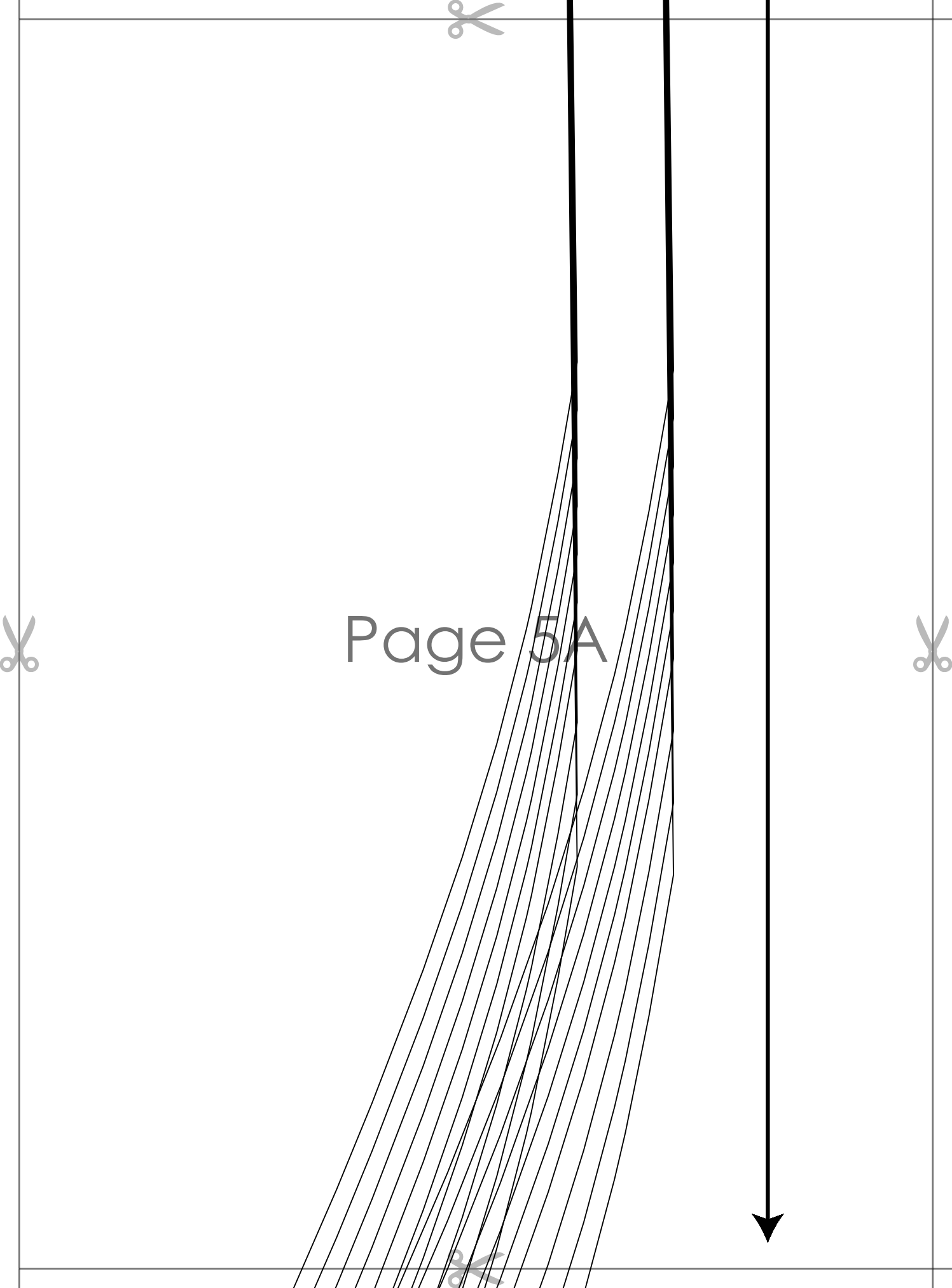


Page 4F



Page 4G

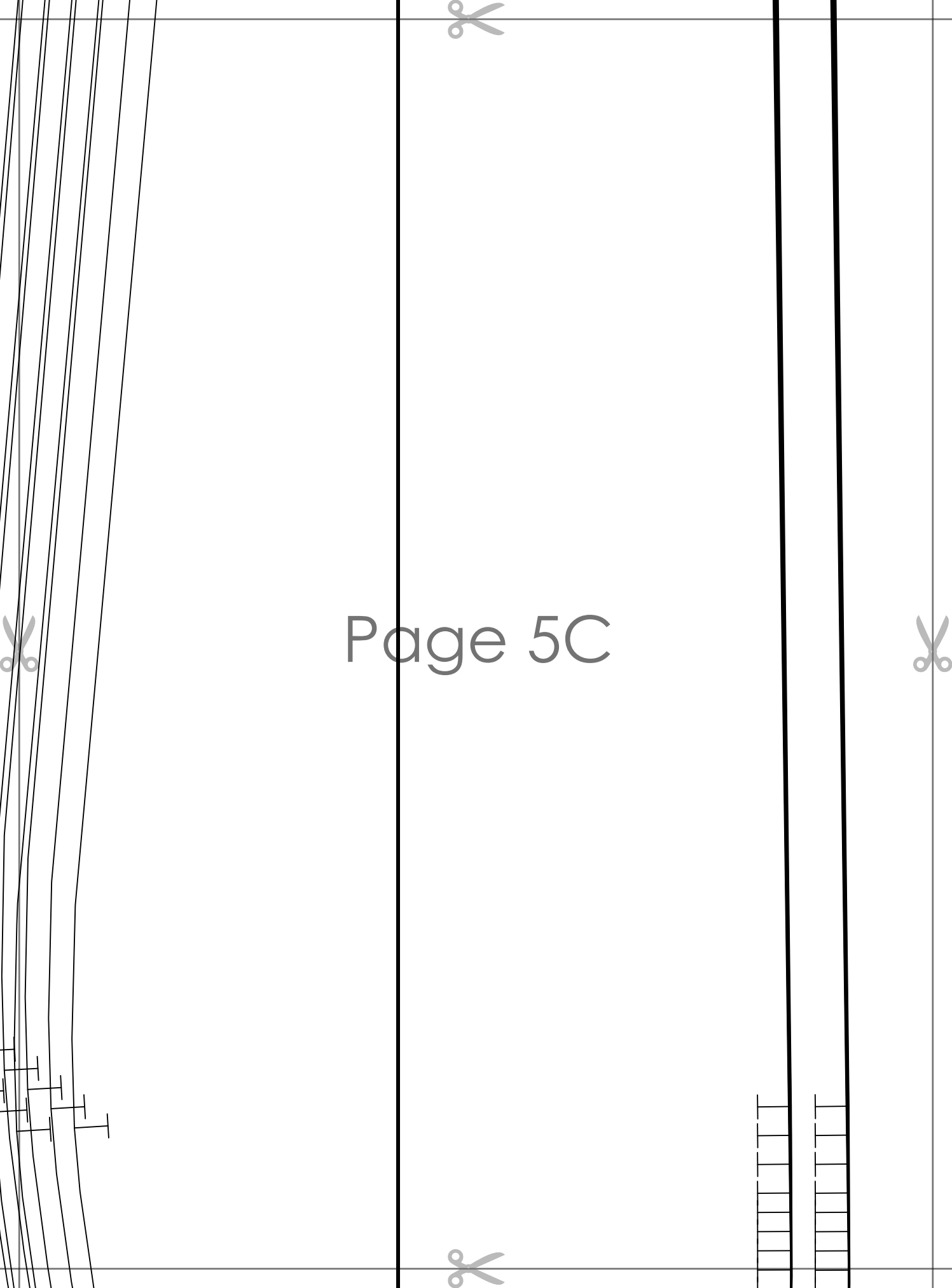






Page 5B



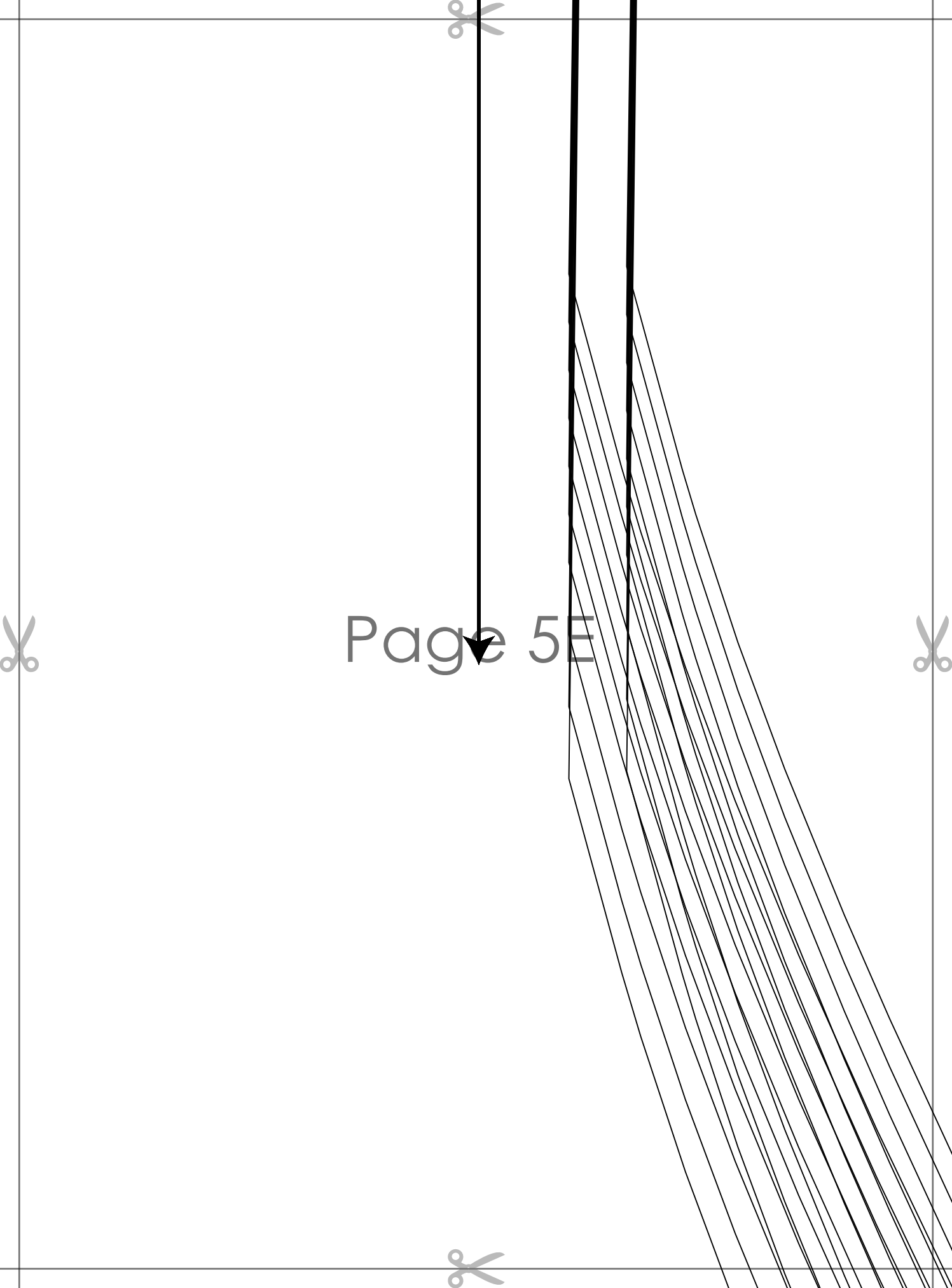


Page 5C

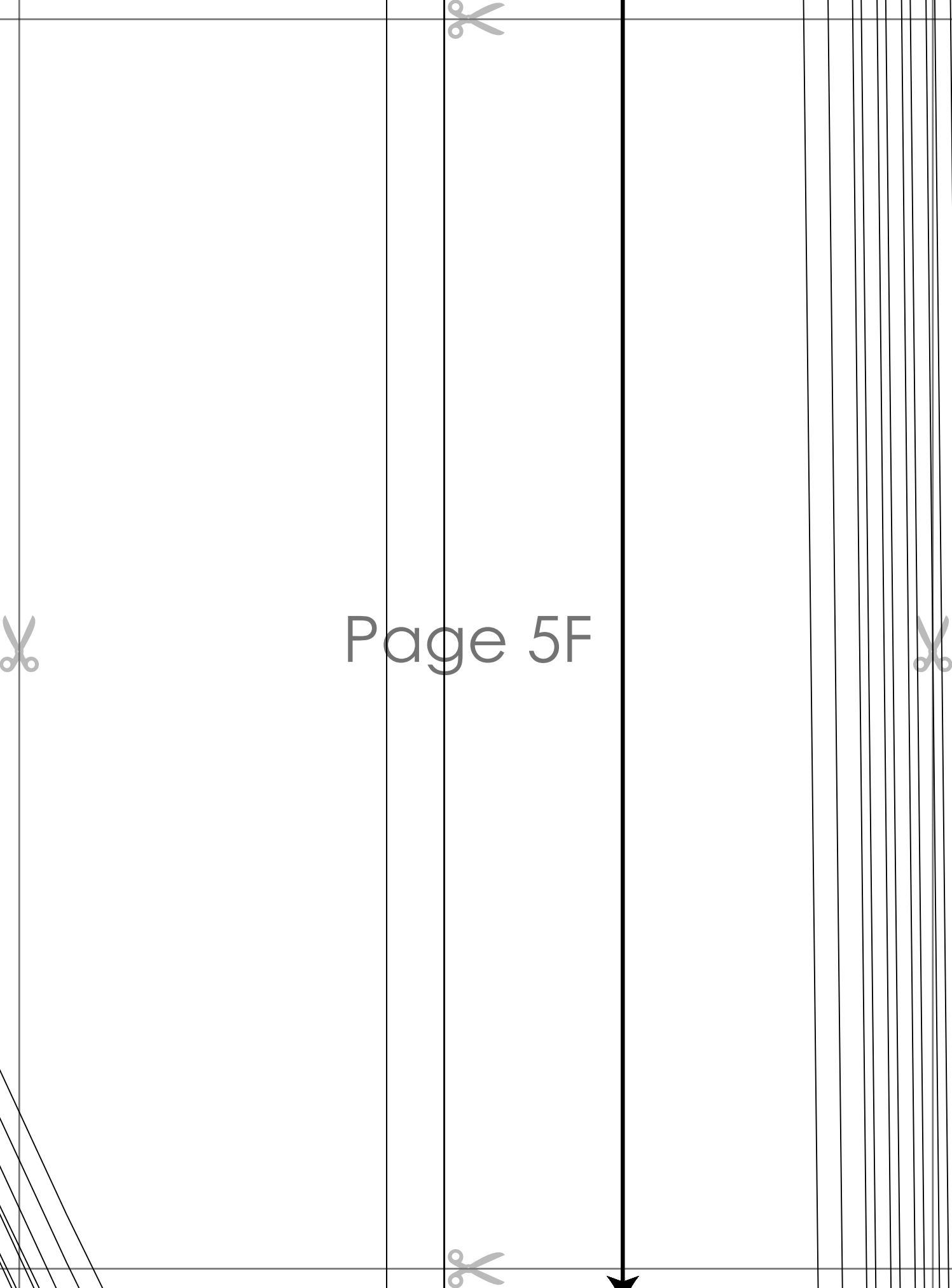


Page 5D





Page 5E



Page 5F



 Tiana's
Closet
TISHA MERMAID MIDI DRESS
with seam allowance
SEAMS
ARMHOLE BINDING
cut 2

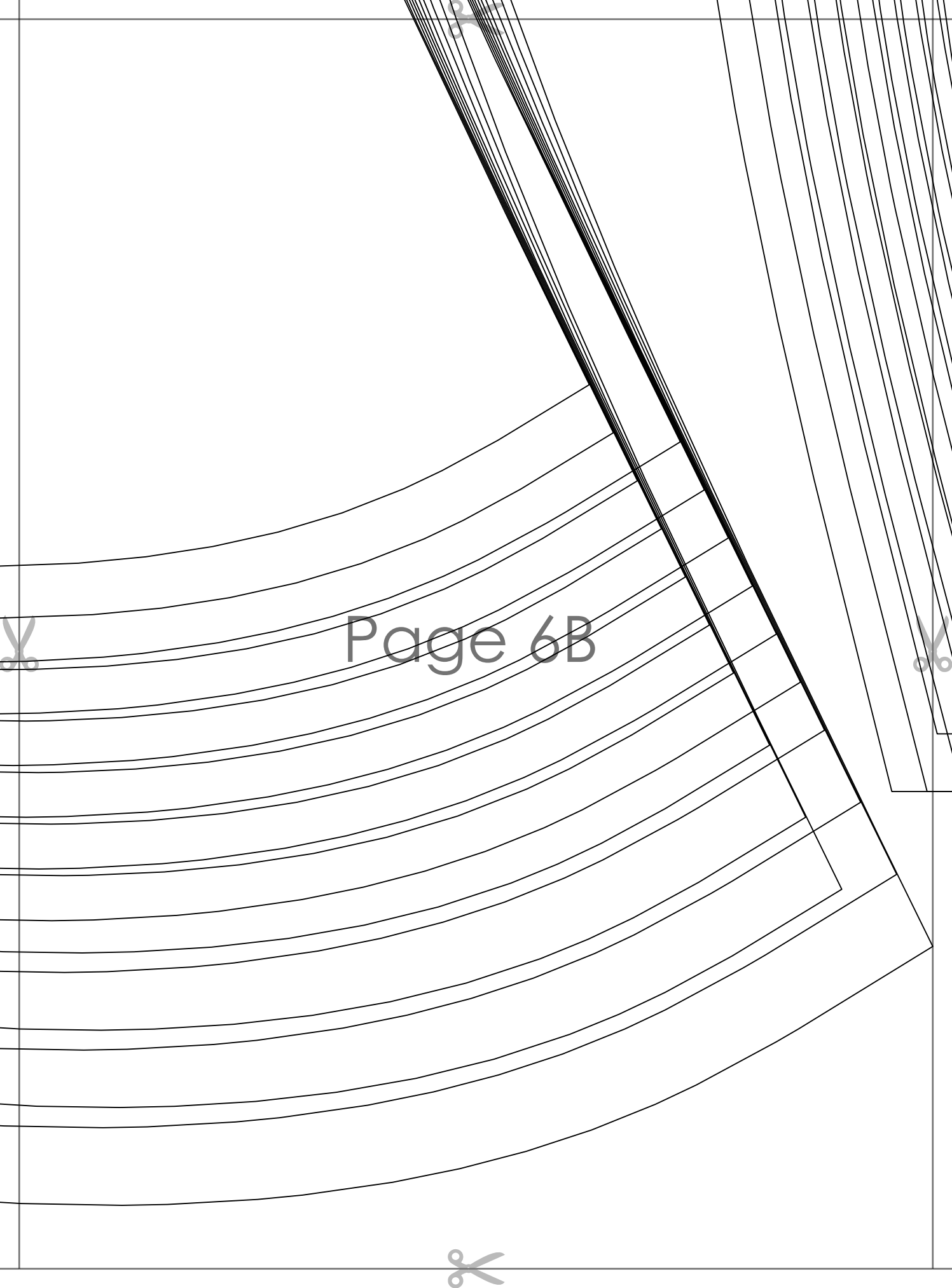


Page 5G



 Tiana's
Closet
TISHA MERMAID MIDI DRESS
with seam allowance
SEAMS
NECKLINE BINDING
cut 1

Page 6A



Page 6B

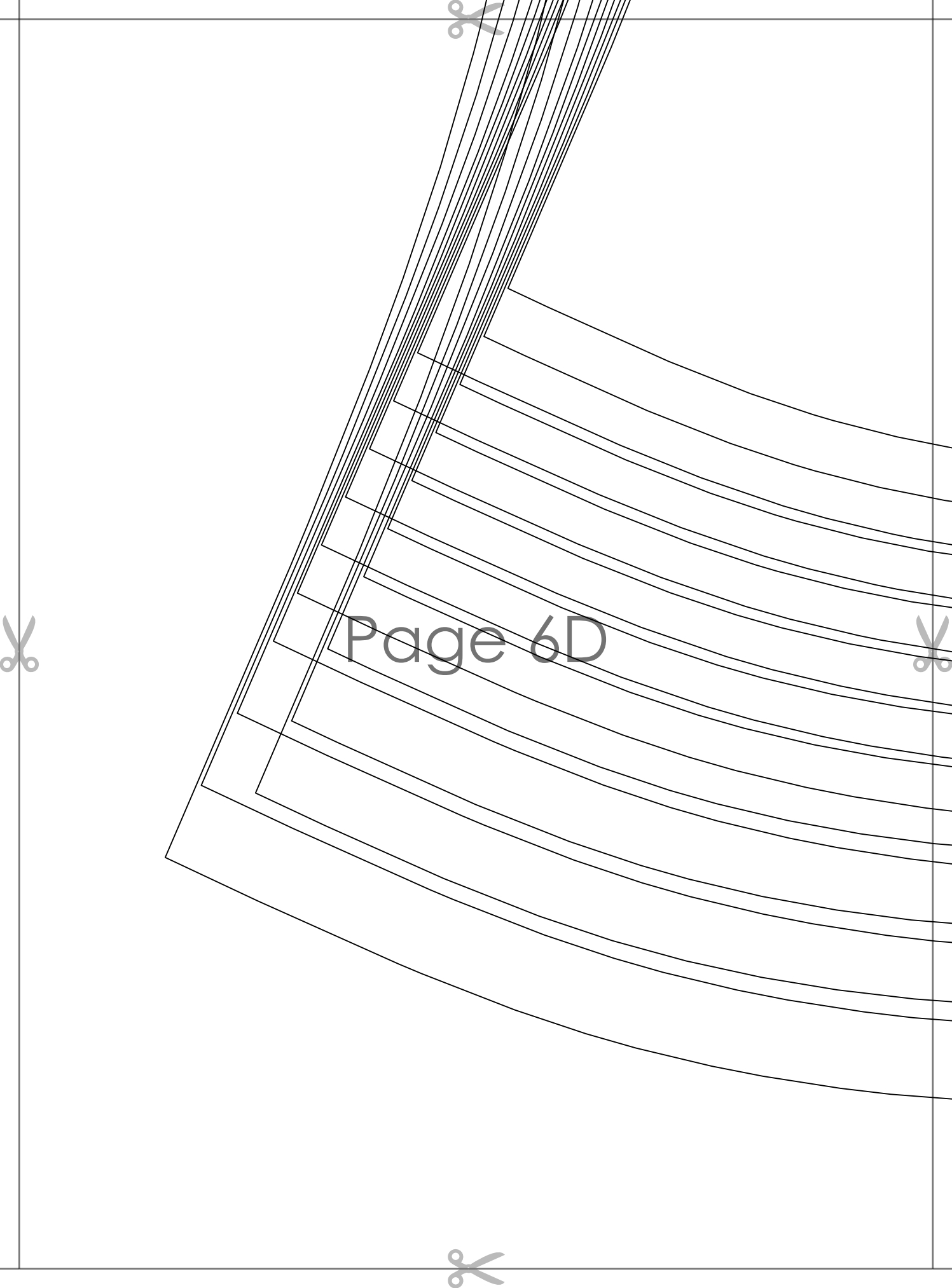


TISHA MERMAID MIDI DRESS
with seam allowance

~~SIZE 14-16~~

SIDE BACK SKIRT
cut 2

Page 6C



Page 6D



Page 6E



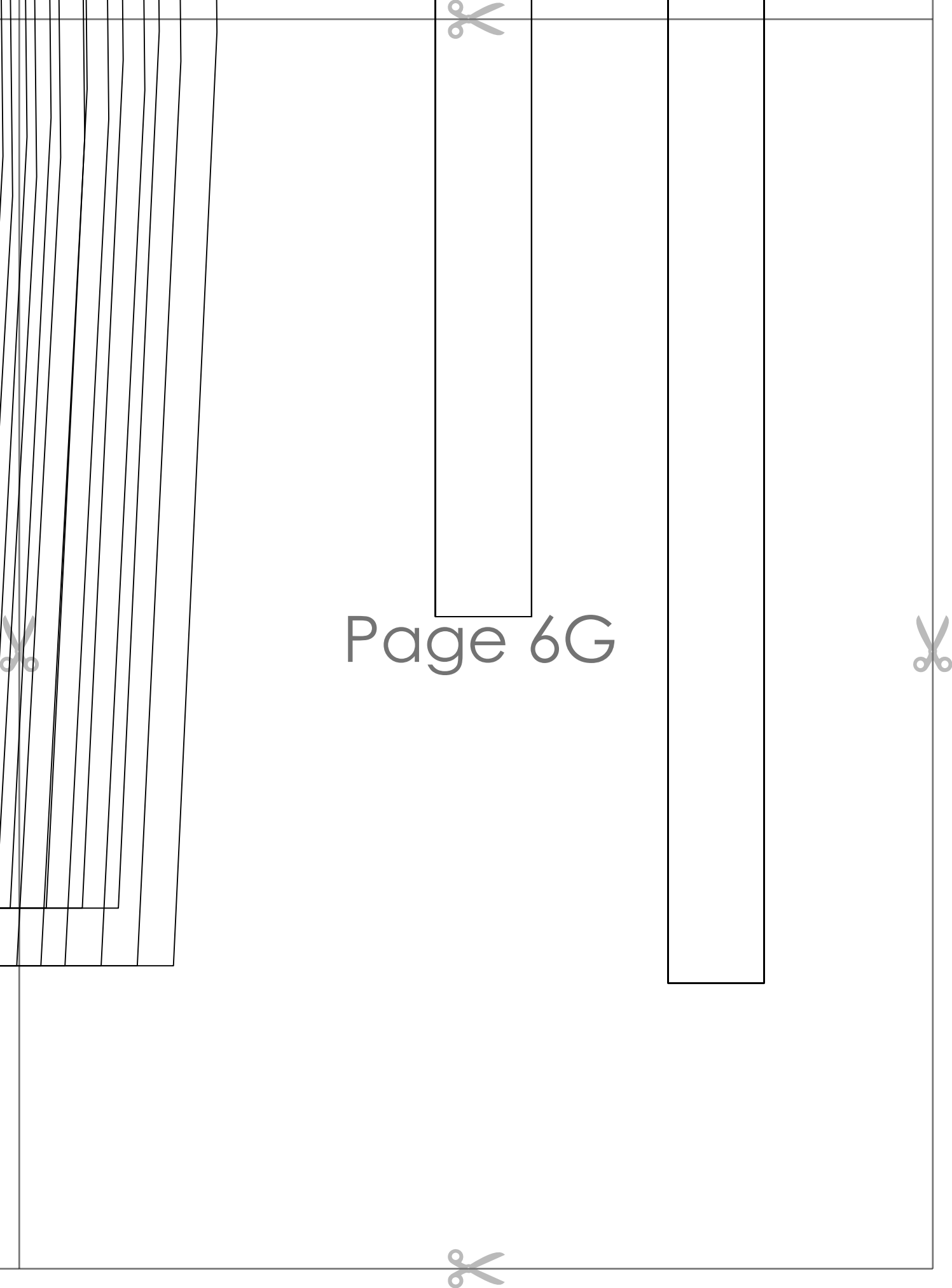


TISHA MERMAID MIDI DRESS
with seam allowance

~~SHIRAZ 2015~~

CENTER FRONT SKIRT
cut 2

Page 6F



Page 6G