

## SIZE TABLE

### TIANA'S CLOSET SEWING PATTERNS

Size code	XXS	XS	S	M	L	XL	XXL	3XL	4XL	5XL
Bust	centimeter	80	84	88	92	96	100	104	110	122
	inch	31.5	33.1	34.6	36.2	37.8	39.4	40.9	43.3	47.2
Waist	centimeter	60	64	68	72	76	80	84	90	102
	inch	23.6	25.2	26.8	28.3	29.9	31.5	33.1	35.4	40.2
Hip	centimeter	88	92	96	100	104	108	112	118	130
	inch	34.6	36.2	37.8	39.4	40.9	42.5	44.1	46.5	52.0

## PRINTING INSTRUCTIONS

- Tiana's Closet sewing patterns are made in Layered PDF format, which means all sizes are saved in one file and can be shown or hidden. It is recommended to use Adobe Acrobat Reader (paid version on Mac OS, free on Windows) or Foxit PDF Reader (free, works on Windows only) to read the file correctly. In order to choose the desired size(s), go to Layers tab of your PDF reader, uncheck all boxes except for the desired size(s) and the box Print for all sizes.

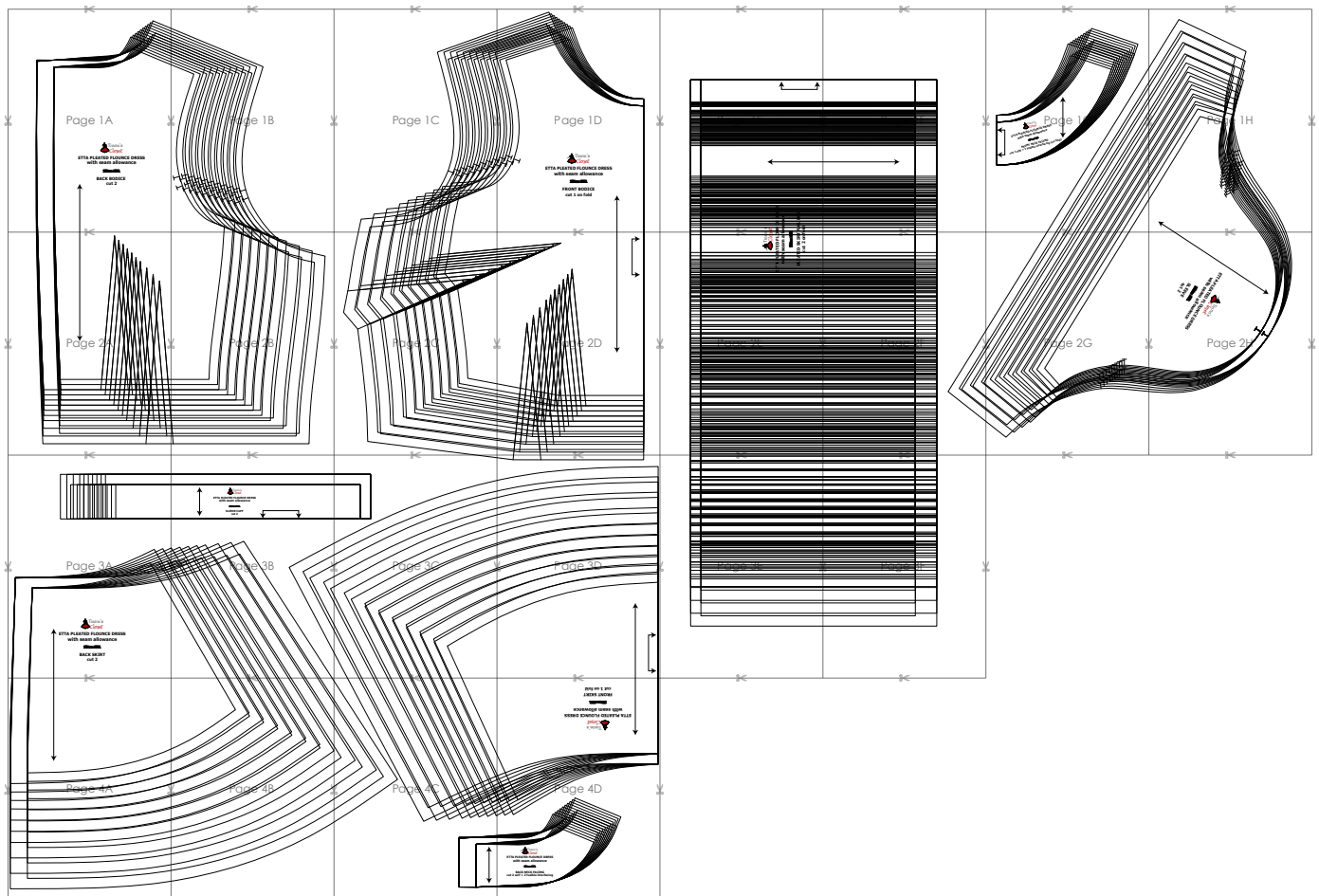
- When printing the pattern, go to Print settings, in the tab Scale choose Custom scale: 100% (or Scaling: None or Actual Size) to print true to size. Note: some computers print smaller than true size even when you choose 100% scale, so you will have to adjust the scale to a little larger than 100% and measure the test square until you get the true size.

- The test square is 10 centimeters (horizontally) and 4 inches (vertically).

- Always print the first page of the file and measure to avoid waste of paper.

- After printing the pattern, cut the pages along the lines with scissors icon, align and tape the pages according to their sequences. For example, page 1A is taped to page 1B in a row, and page 1A is taped to page 2A in a column. Please see the image below to see how the pages line up.

- You can find photo instruction for printing sewing patterns on Tiana's Closet website: <https://tianasclot.com/index.php/how-to-print-tianas-closet-patterns/>



Page 1A

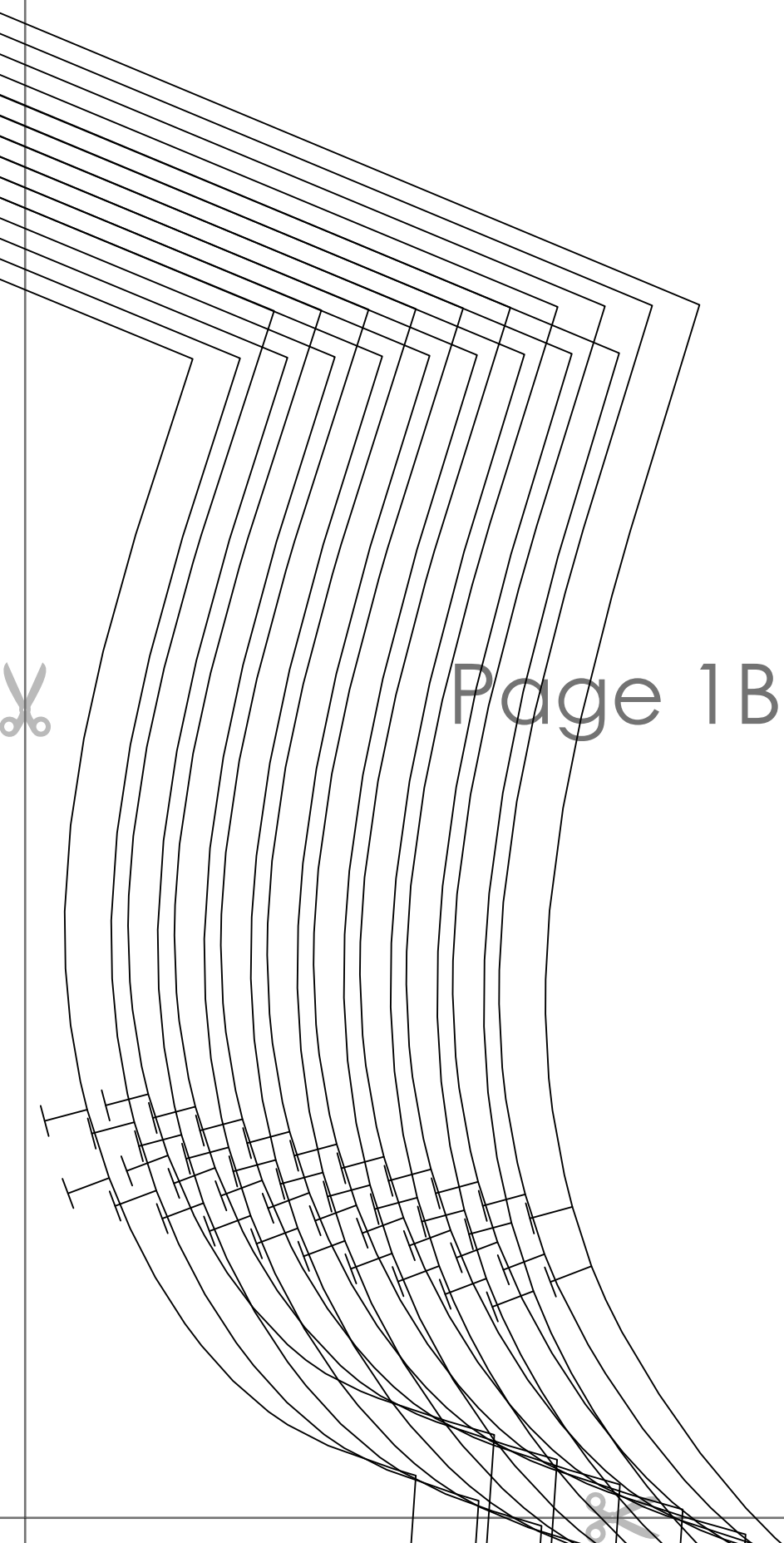


**ETTA PLEATED FLOUNCE DRESS  
with seam allowance**

~~Size 10-12~~

**BACK BODICE  
cut 2**



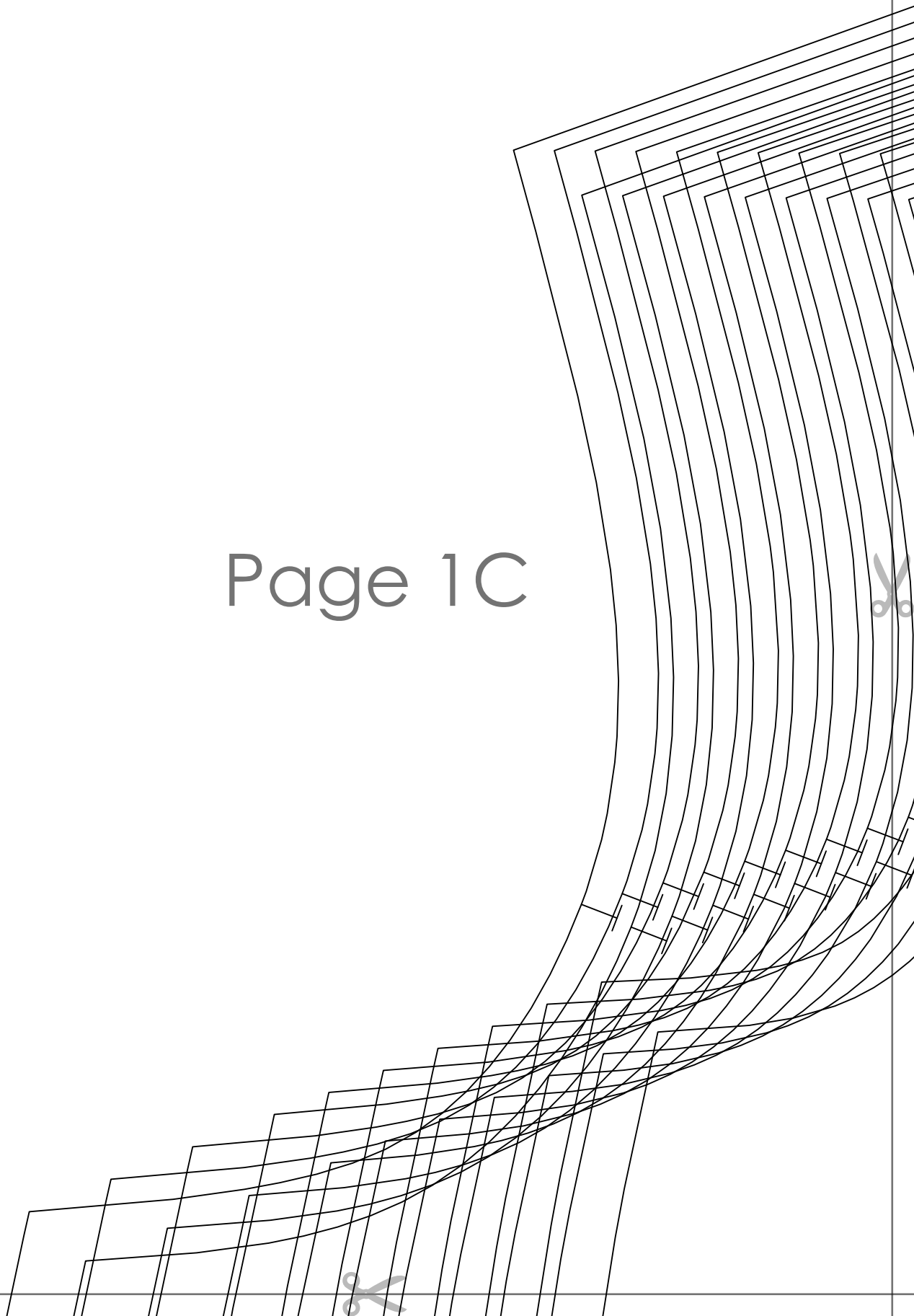


Page 1B





Page 1C



Page 1D



**ETTA PLEATED FLOUNCE DRESS  
with seam allowance**

**~~Size: M~~**

**FRONT BODICE  
cut 1 on fold**



2 1/2  
x 2 1/2

OUNCE DRESS  
allowance

1/2

T FLOUNCE  
fold

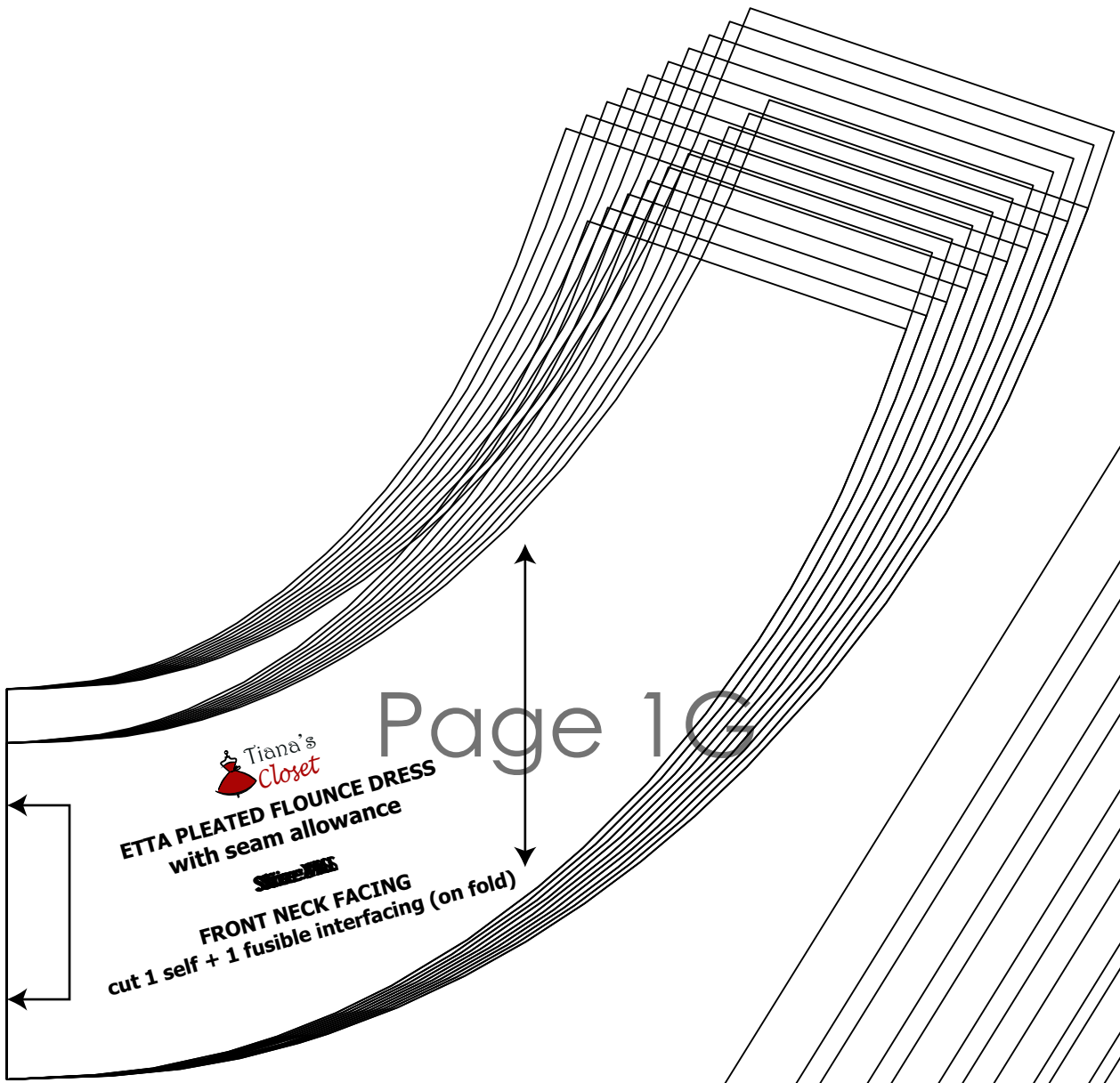
Page 1E





Page 1F





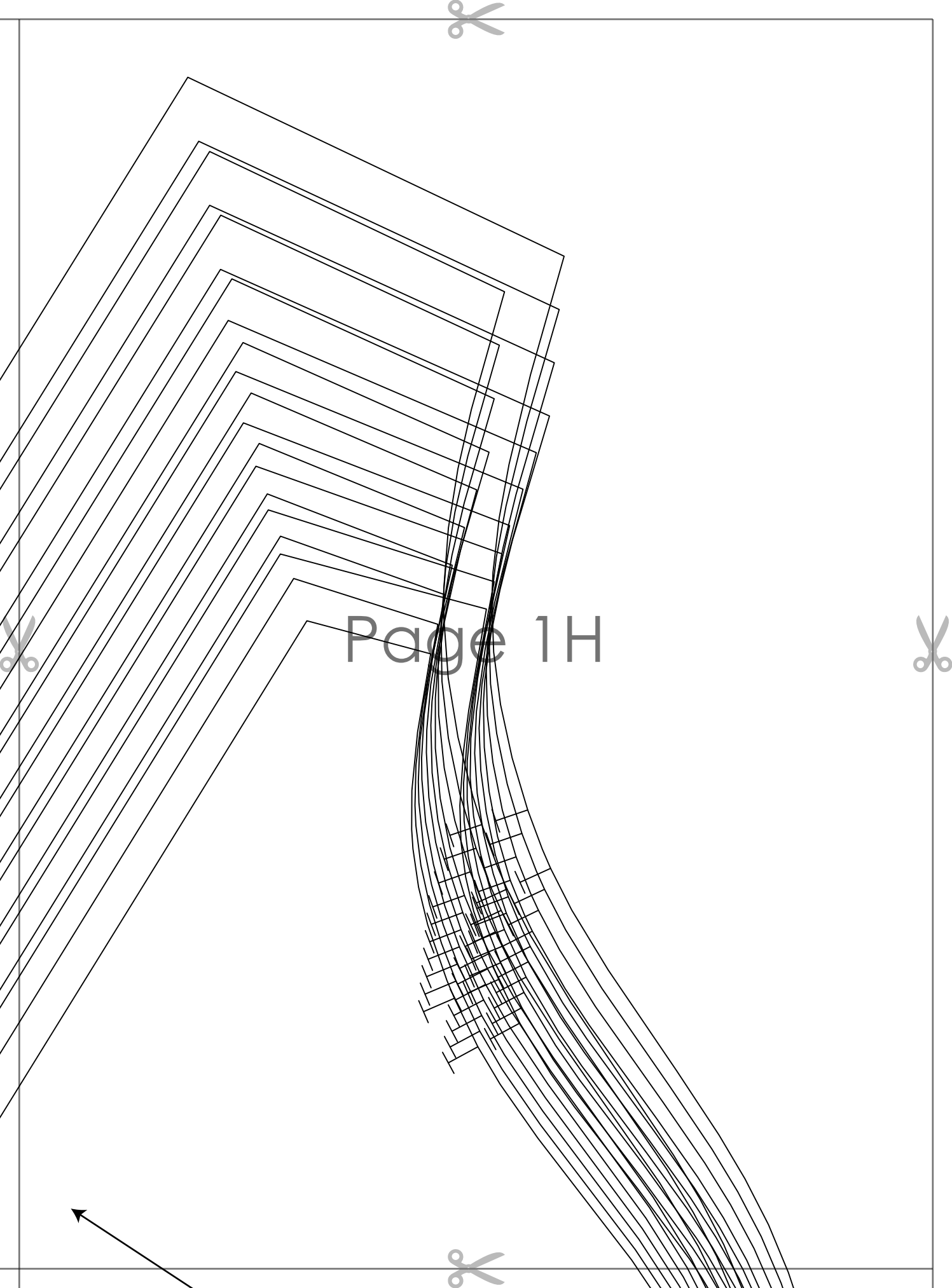
**ETTA PLEATED FLOUNCE DRESS**  
with seam allowance



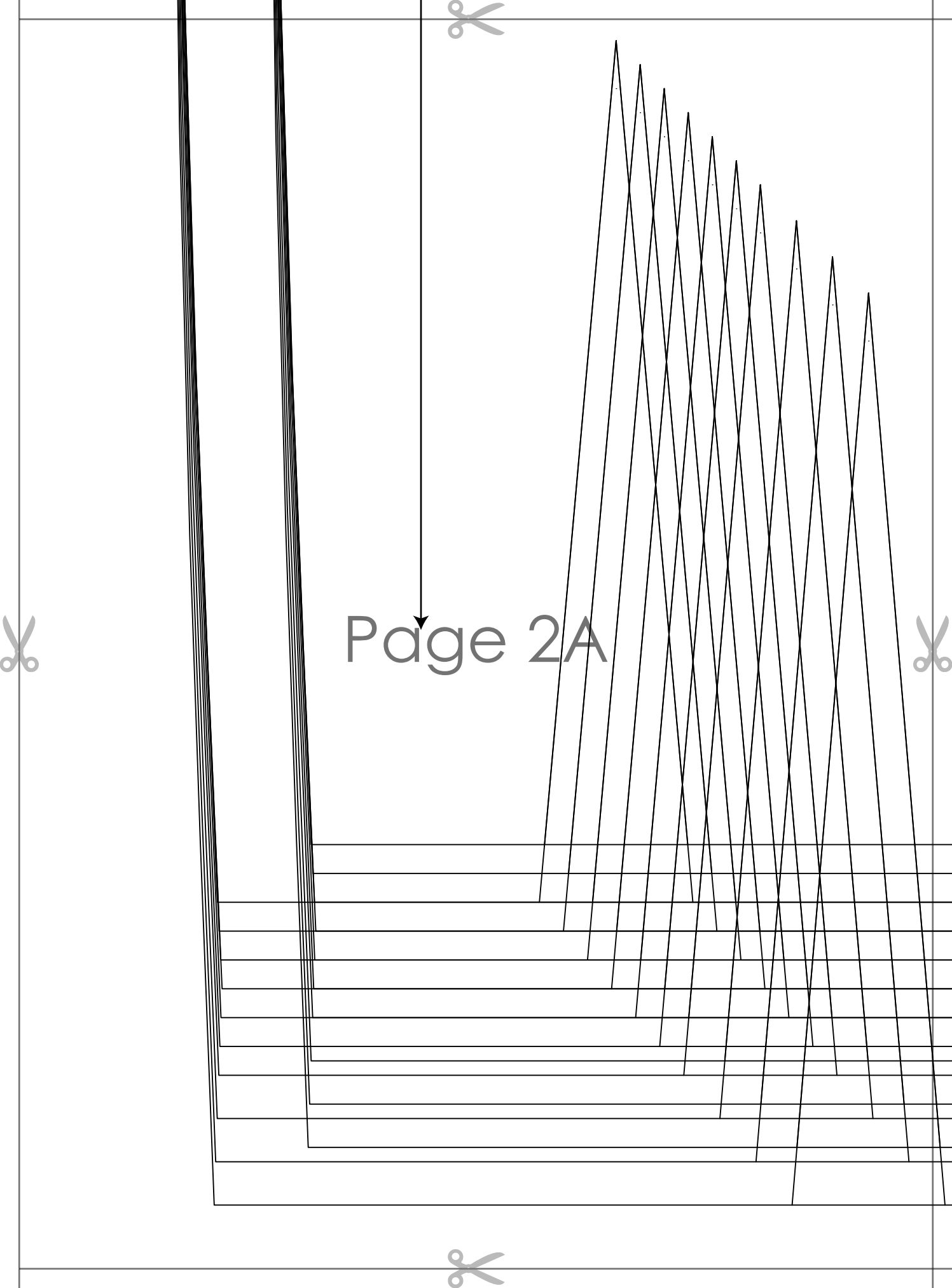
**FRONT NECK FACING**  
cut 1 self + 1 fusible interfacing (on fold)

Page 1G





Page 1H



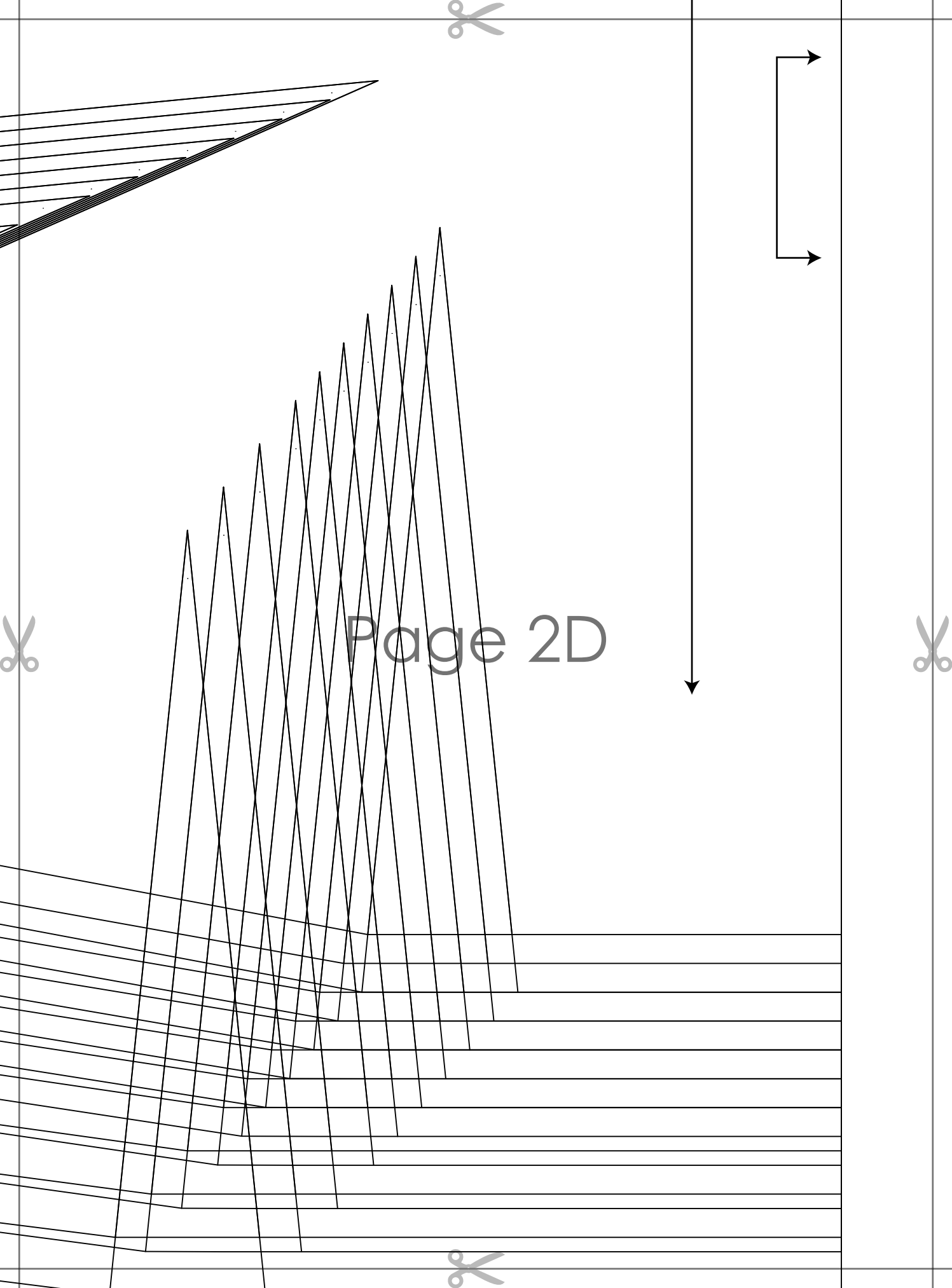
Page 2A



Page 2B



Page 2C



Page 2D



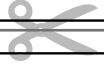
Page 2E



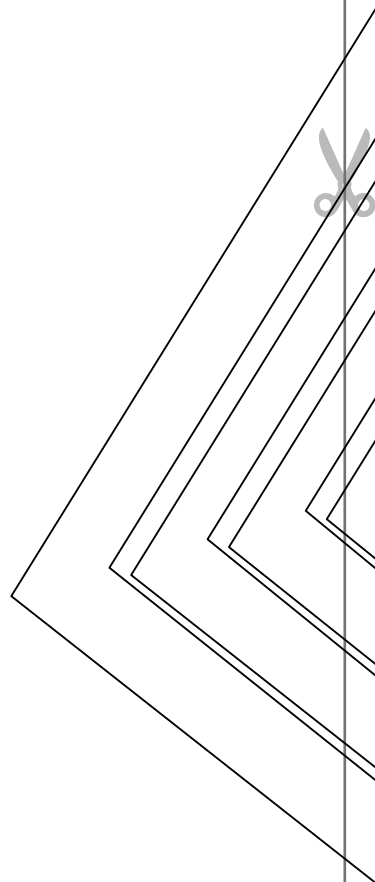
**ETTA PLEATED FLOU**  
**with seam allo**

**~~SKIRT 2013~~**

**PLEATED SKIRT F**  
**cut 2 on fol**



Page 2F



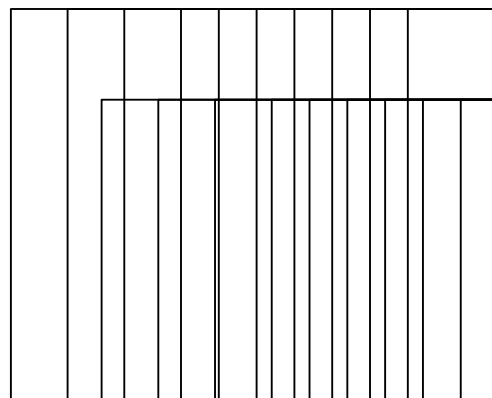


Page 2G



ETTA PLEATED FLOUNCE DRESS  
with seam allowance  
~~SLEEVE~~  
SLEEVE  
cut 2





Page 3A



**ETTA PLEATED FLOUNCE DRESS**  
**with seam allowance**

~~Size 20~~

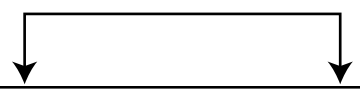
**BACK SKIRT**  
**cut 2**



**ETTA PLEATED FLOUNCE DRESS  
with seam allowance**

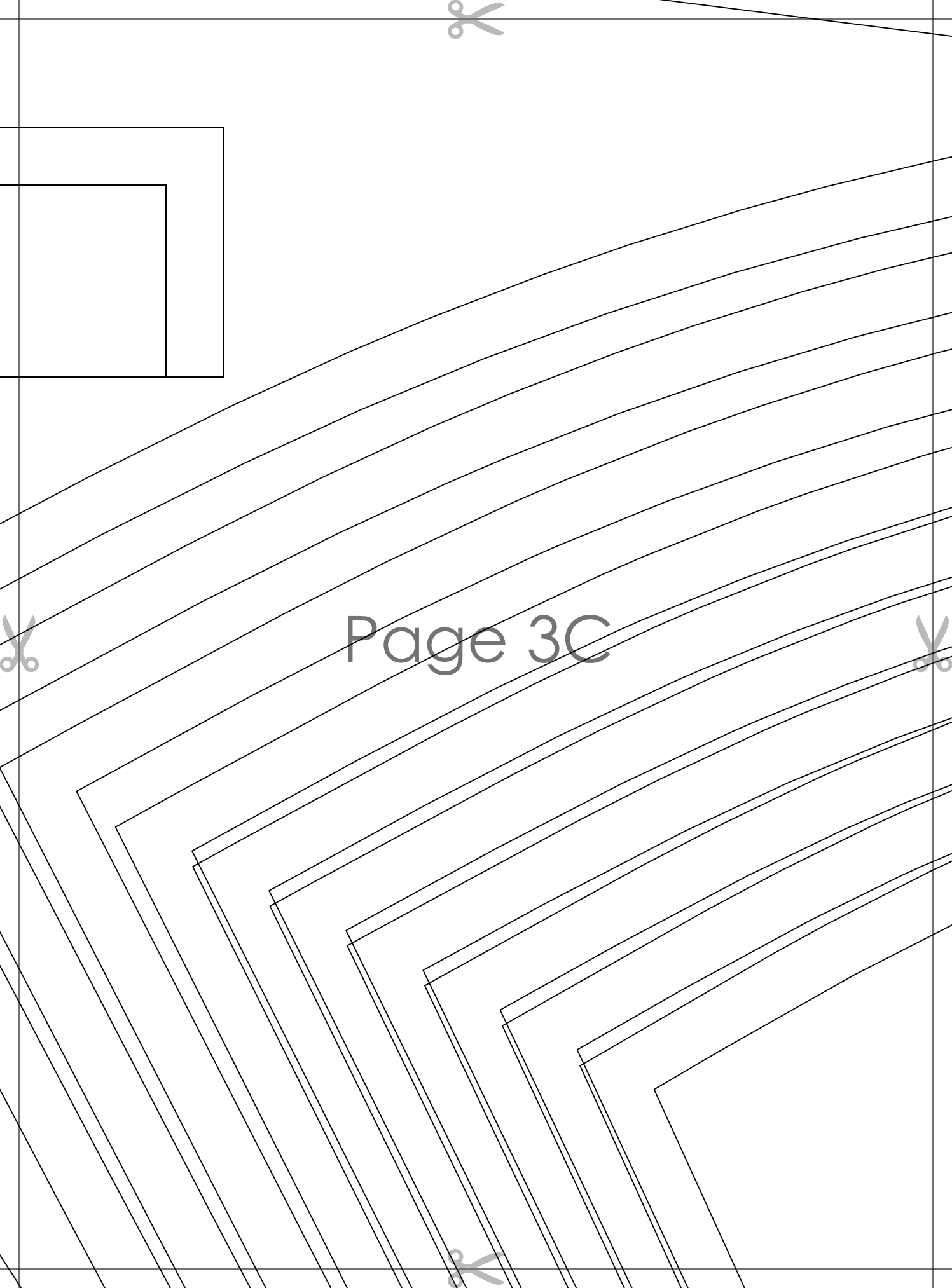
~~Size 20-22~~

**SLEEVE CUFF  
cut 2**



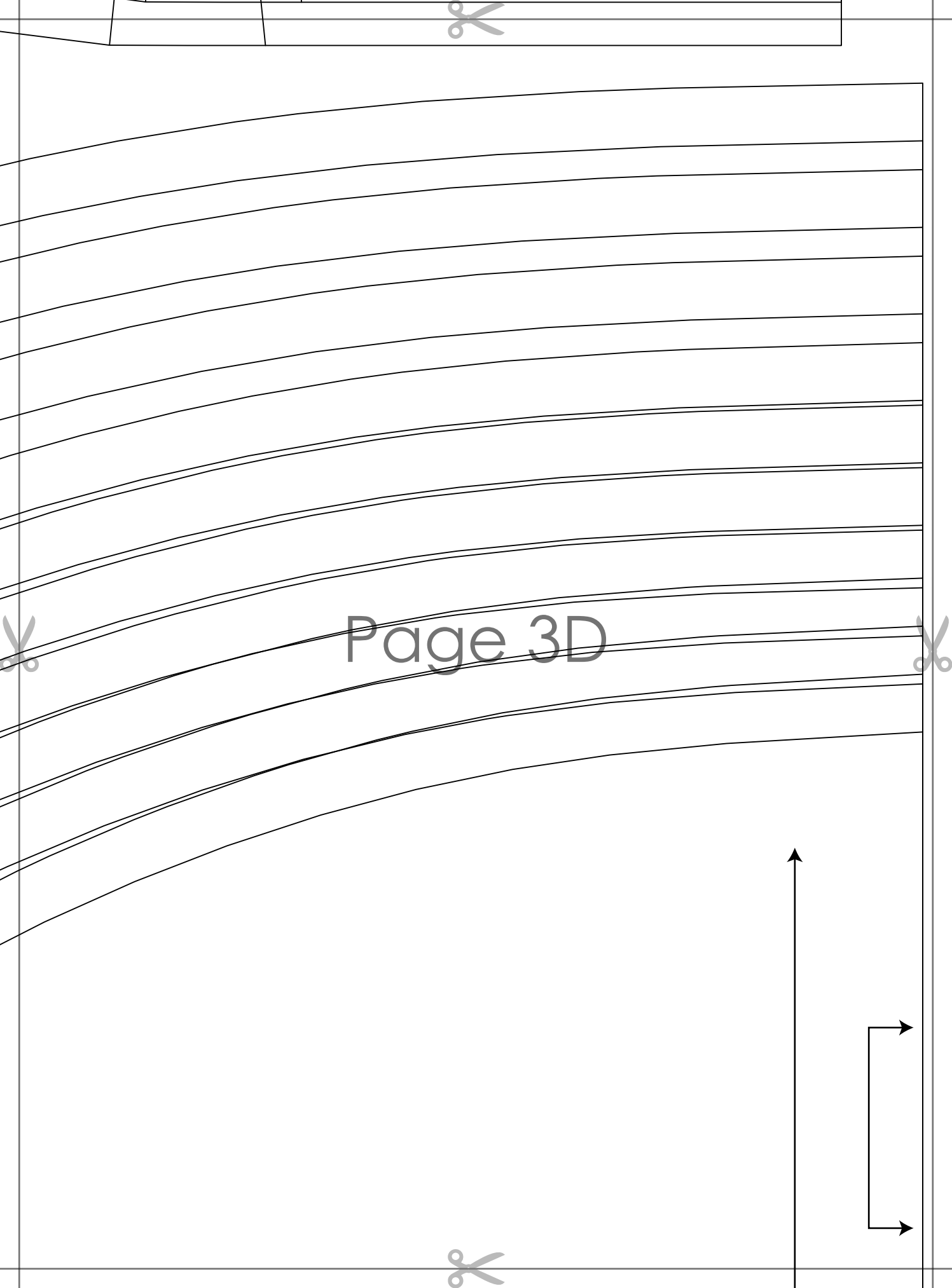
Page 3B





Page 3C





Page 3D



Page 3E





Page 3F

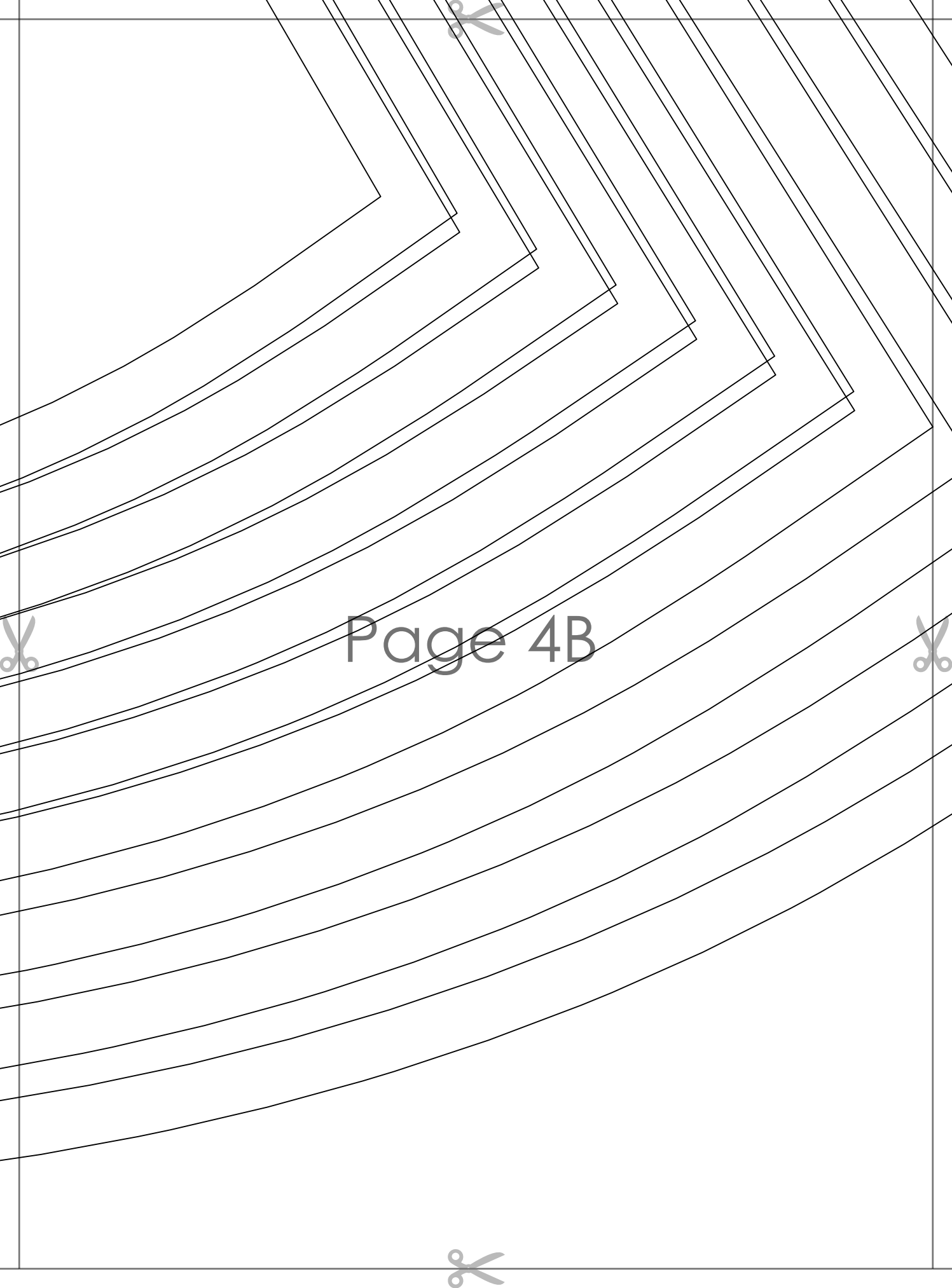




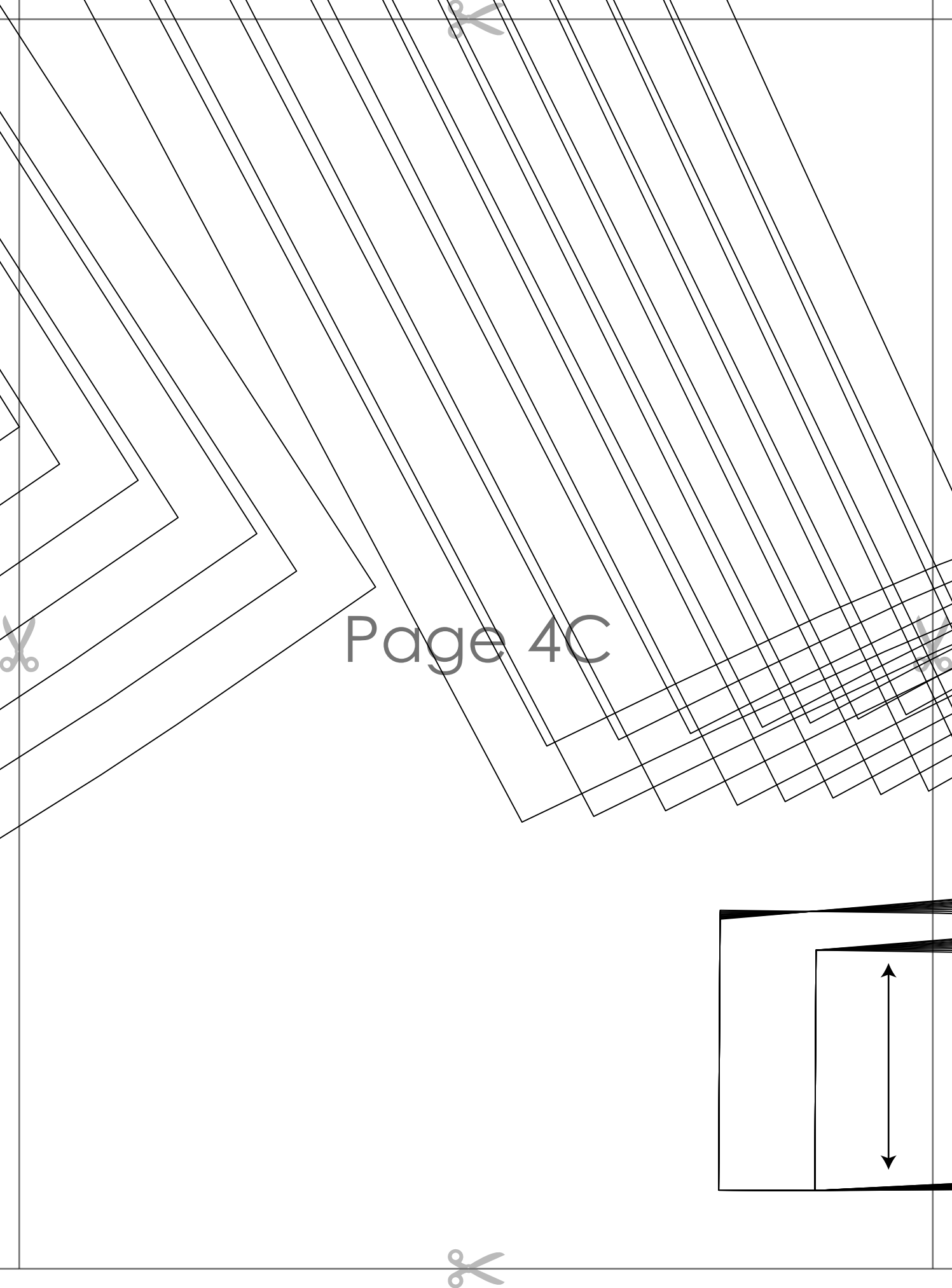
Page 4A



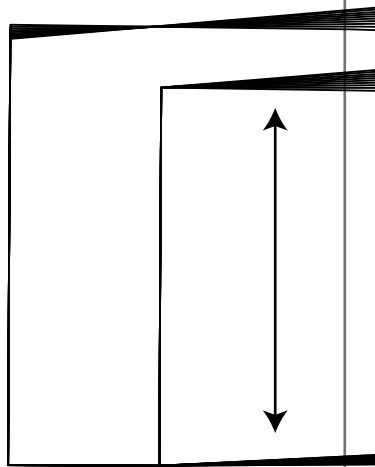




Page 4B



Page 4C





**FRONT SKIRT**  
cut 1 on fold

~~SEAM ALLOWANCE~~

**ETTA PLEATED FLOUNCE DRESS**  
with seam allowance



Page 4D



**ETTA PLEATED FLOUNCE DRESS**  
with seam allowance

~~SEAM ALLOWANCE~~

**BACK NECK FACING**  
cut 2 self + 2 fusible interfacing

