

SIZE TABLE

TIANA'S CLOSET SEWING PATTERNS

Size code	XXS	XS	S	M	L	XL	XXL	3XL	4XL	5XL
Bust	centimeter	80	84	88	92	96	100	104	110	122
	inch	31.5	33.1	34.6	36.2	37.8	39.4	40.9	43.3	47.2
Waist	centimeter	60	64	68	72	76	80	84	90	102
	inch	23.6	25.2	26.8	28.3	29.9	31.5	33.1	35.4	40.2
Hip	centimeter	88	92	96	100	104	108	112	118	130
	inch	34.6	36.2	37.8	39.4	40.9	42.5	44.1	46.5	52.0

PRINTING INSTRUCTIONS

- Tiana's Closet sewing patterns are made in Layered PDF format, which means all sizes are saved in one file and can be shown or hidden. It is recommended to use Adobe Acrobat Reader (paid version on Mac OS, free on Windows) or Foxit PDF Reader (free, works on Windows only) to read the file correctly. In order to choose the desired size(s), go to Layers tab of your PDF reader, uncheck all boxes except for the desired size(s) and the box Print for all sizes.

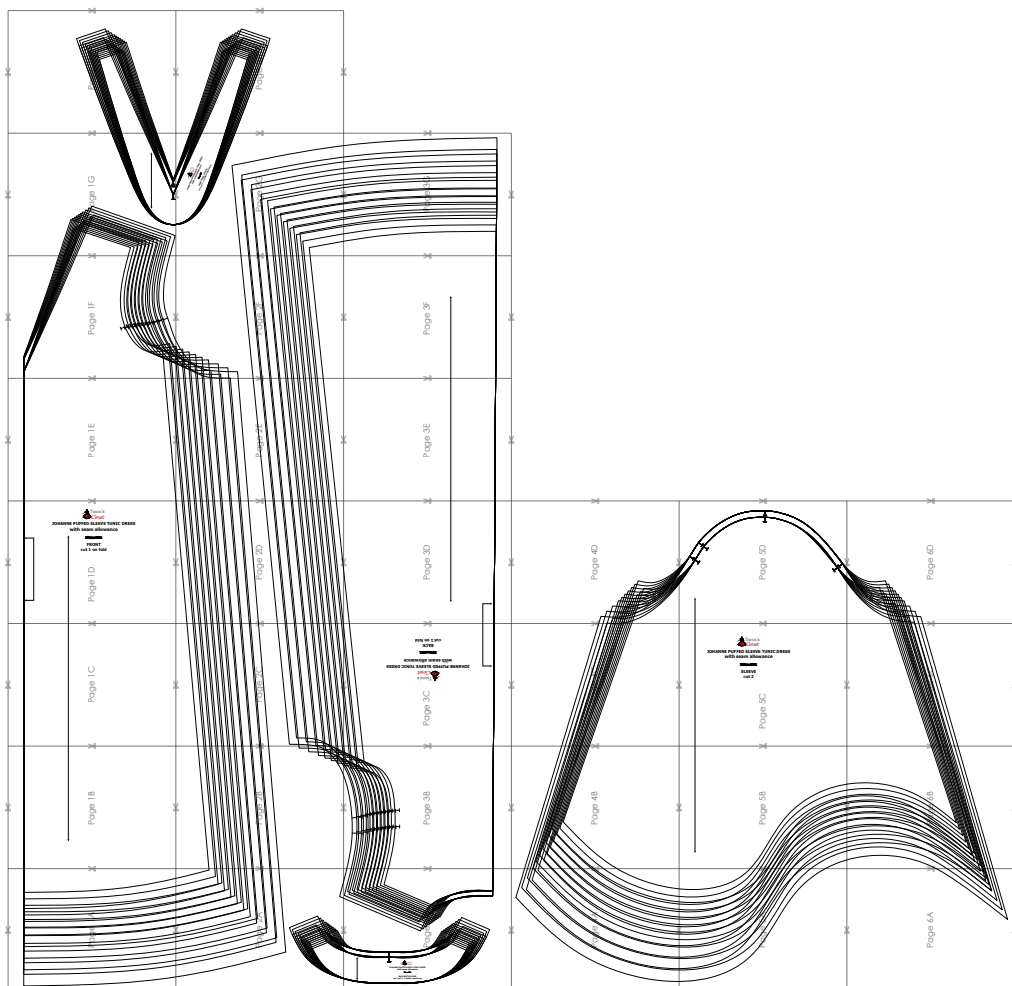
- When printing the pattern, go to Print settings, in the tab Scale choose Custom scale: 100% (or Scaling: None or Actual Size) to print true to size. Note: some computers print smaller than true size even when you choose 100% scale, so you will have to adjust the scale to a little larger than 100% and measure the test square until you get the true size.

- The test square is 10 centimeters (horizontally) and 4 inches (vertically).

- Always print the first page of the file and measure to avoid waste of paper.

- After printing the pattern, cut the pages along the lines with scissors icon, align and tape the pages according to their sequences. For example, page 1A is taped to page 1B in a row, and page 1A is taped to page 2A in a column. Please see the image below to see how the pages line up.

- You can find photo instruction for printing sewing patterns on Tiana's Closet website: <https://tianasclot.com/index.php/how-to-print-tianas-closet-patterns/>

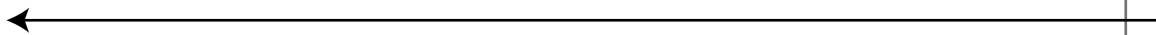


For more ideas and free sewing patterns, visit <http://tianasclot.com>



Page 1A





Page 1B





Page 1C





JOHANNE PUFFED SLEEVE TUNIC DRESS with seam allowance

~~SEAM ALLOWANCE~~

FRONT

cut 1 on fold





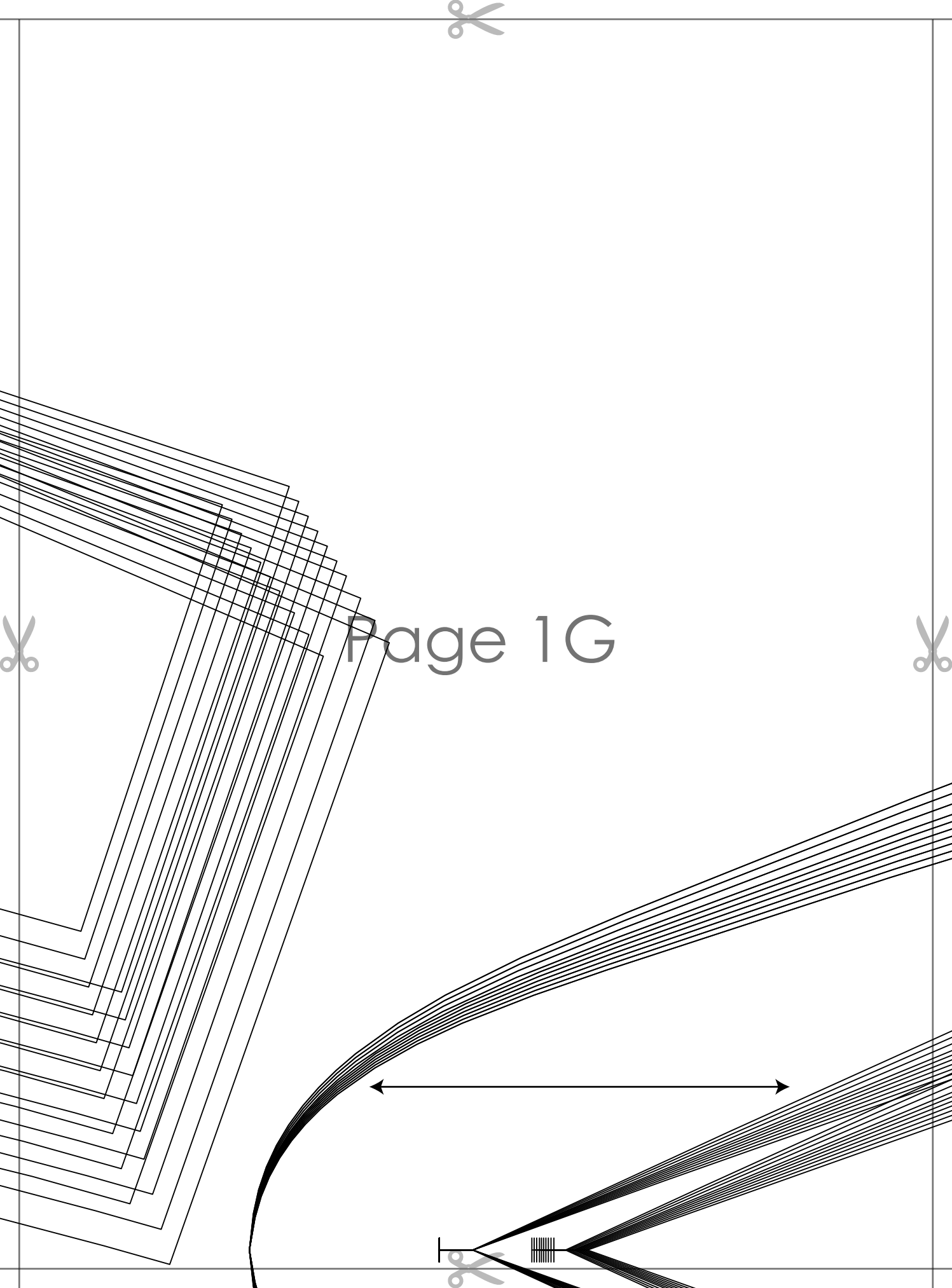
Page 1E



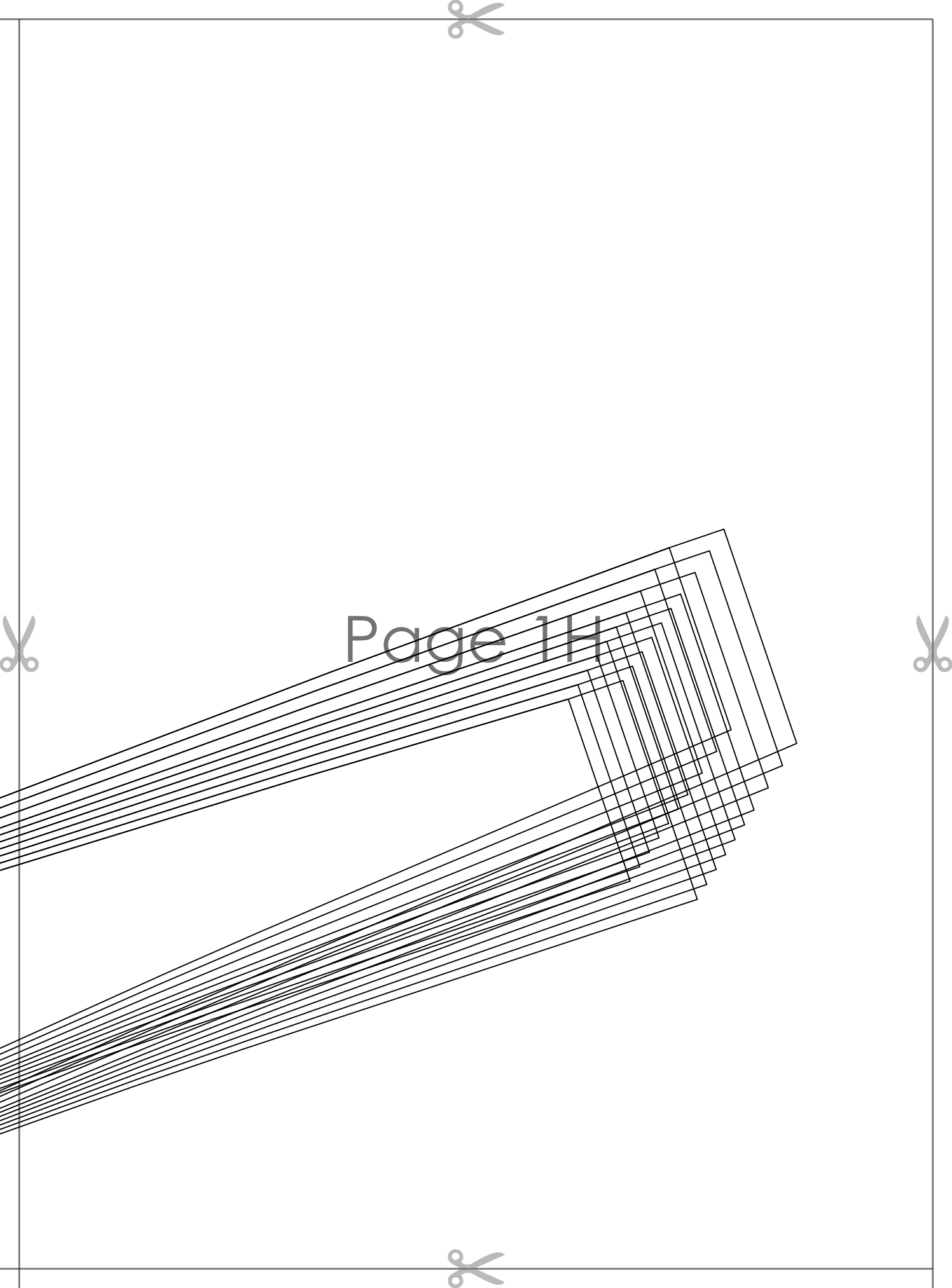


Page 1F





Page 1G

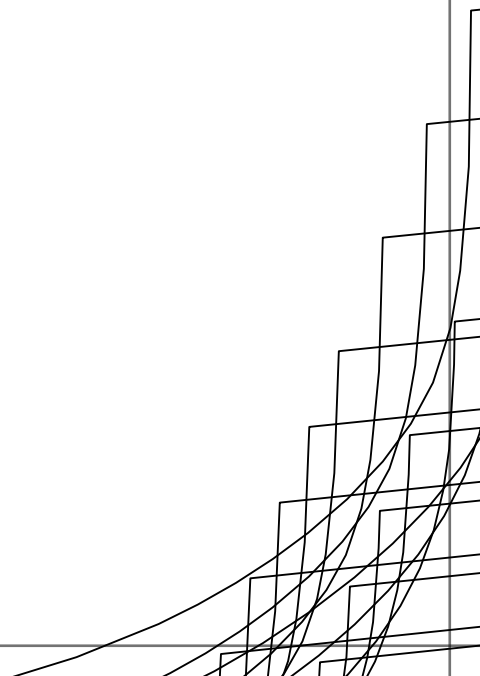


Page 1H

Page 2A



Page 2B





Page 2C

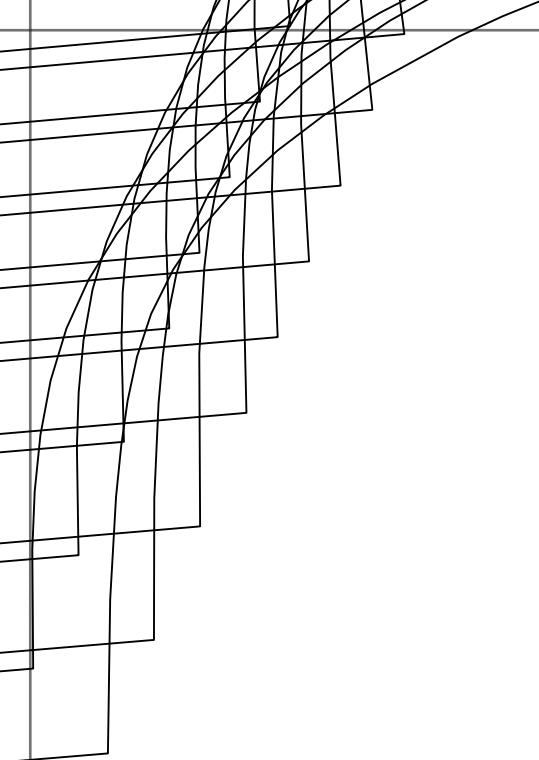




Page 2D





Page 2E



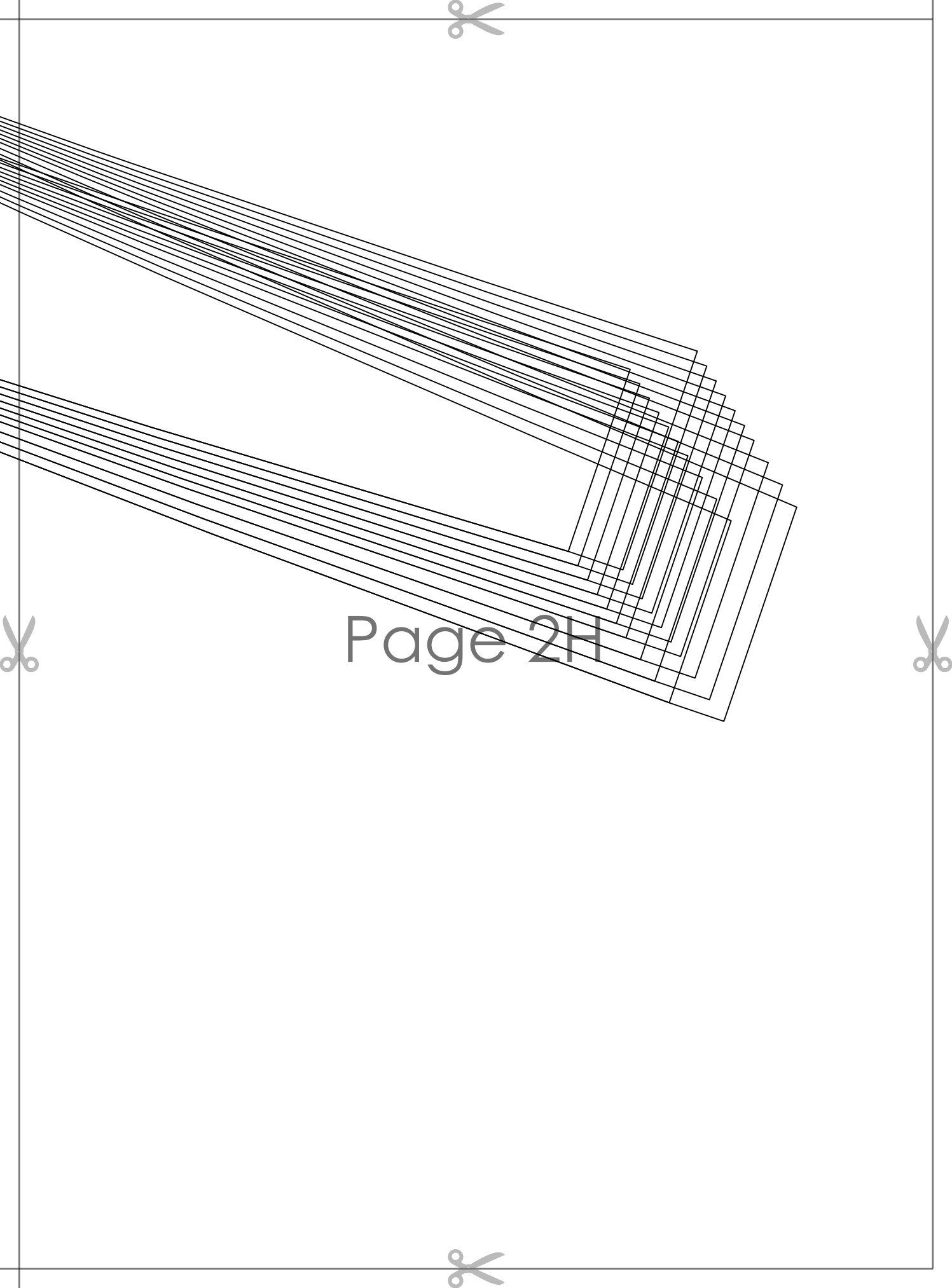
Page 2F



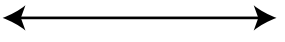
 **JOHANNE PUFFED SLEEVE TUNIC DRESS**
with seam allowance

 **FRONT NECK FACING**
cut 1 self + 1 fusible interfacing

Page 2G



Page 2H



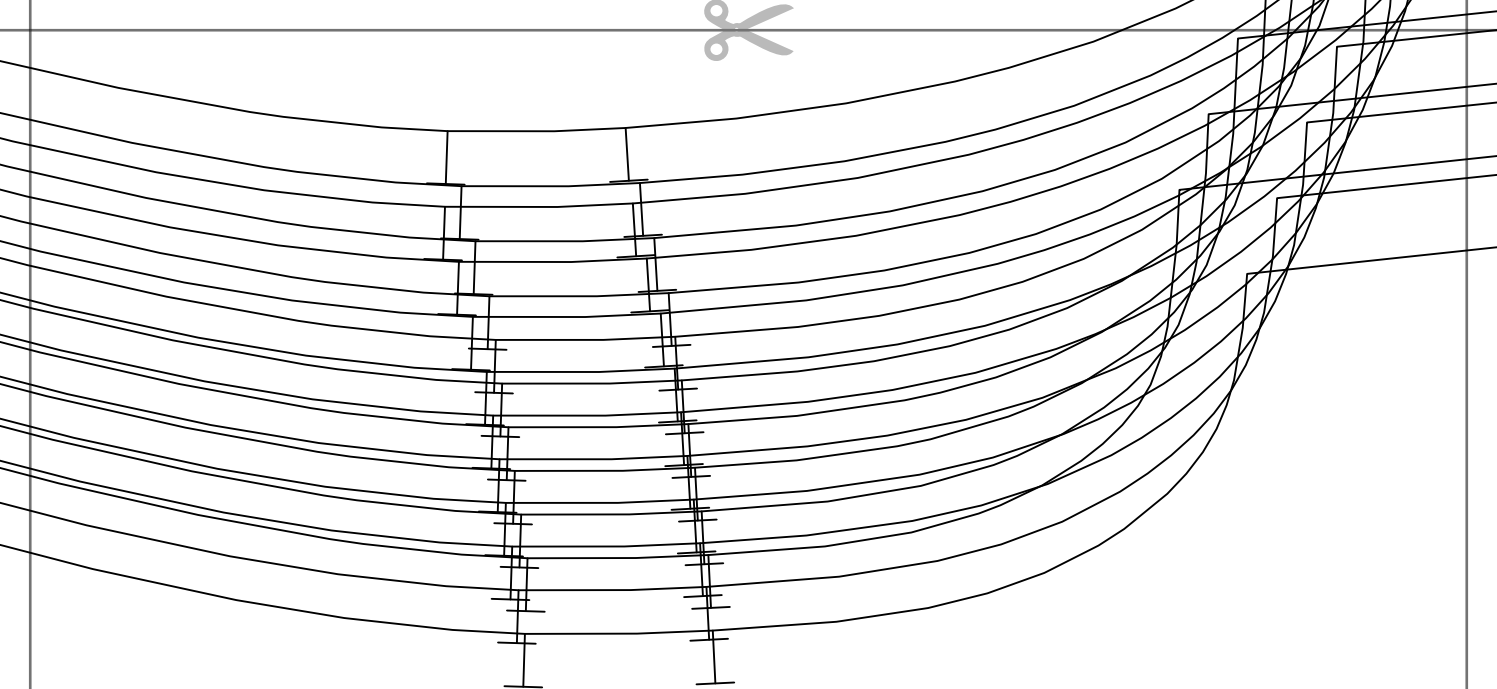
JOHANNE PUFFED SLEEVE TUNIC DRESS
with seam allowance

SIZE 20-22

BACK NECK FACING
cut 1 self + 1 fusible interfacing

Page 3A





Page 3B

Page 3C

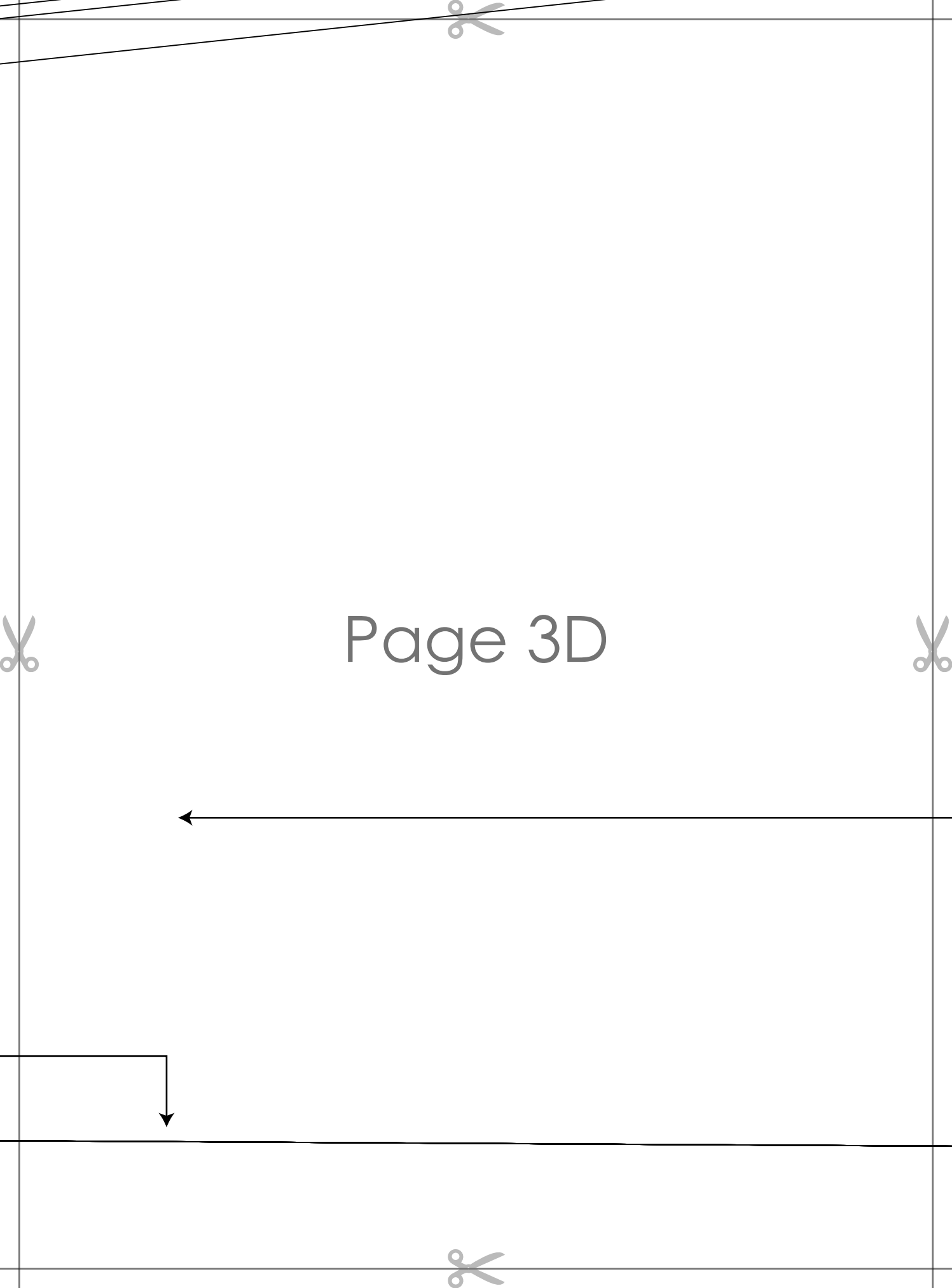


JOHANNE PUFFED SLEEVE TUNIC DRESS
with seam allowance

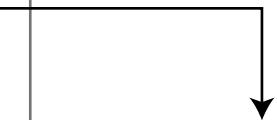
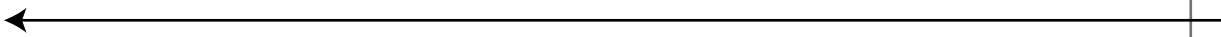
~~SHIRTS~~

BACK
cut 1 on fold





Page 3D



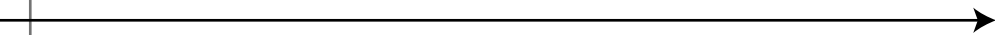


Page 3E





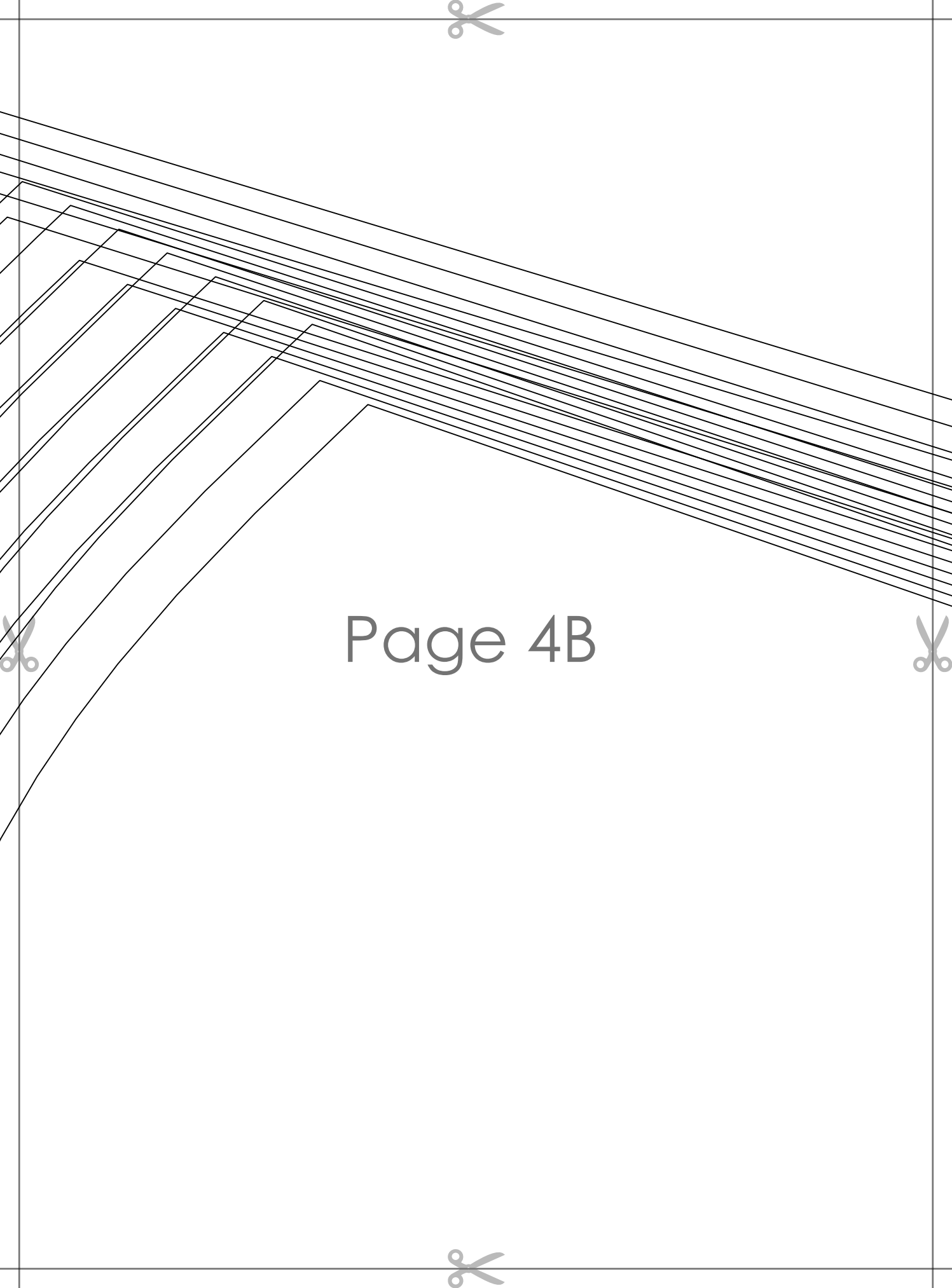
Page 3F



Page 3G



Page 4A



Page 4B

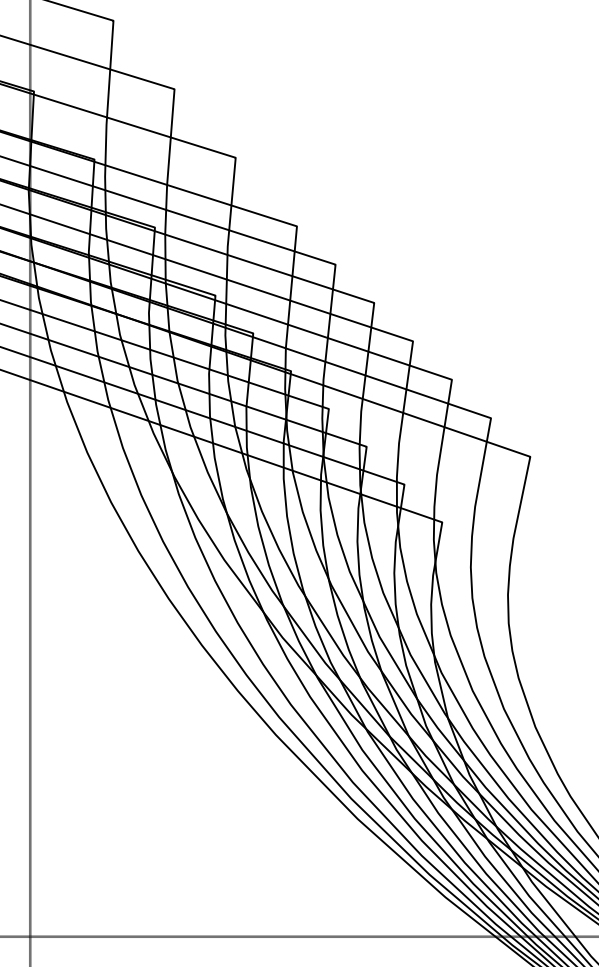


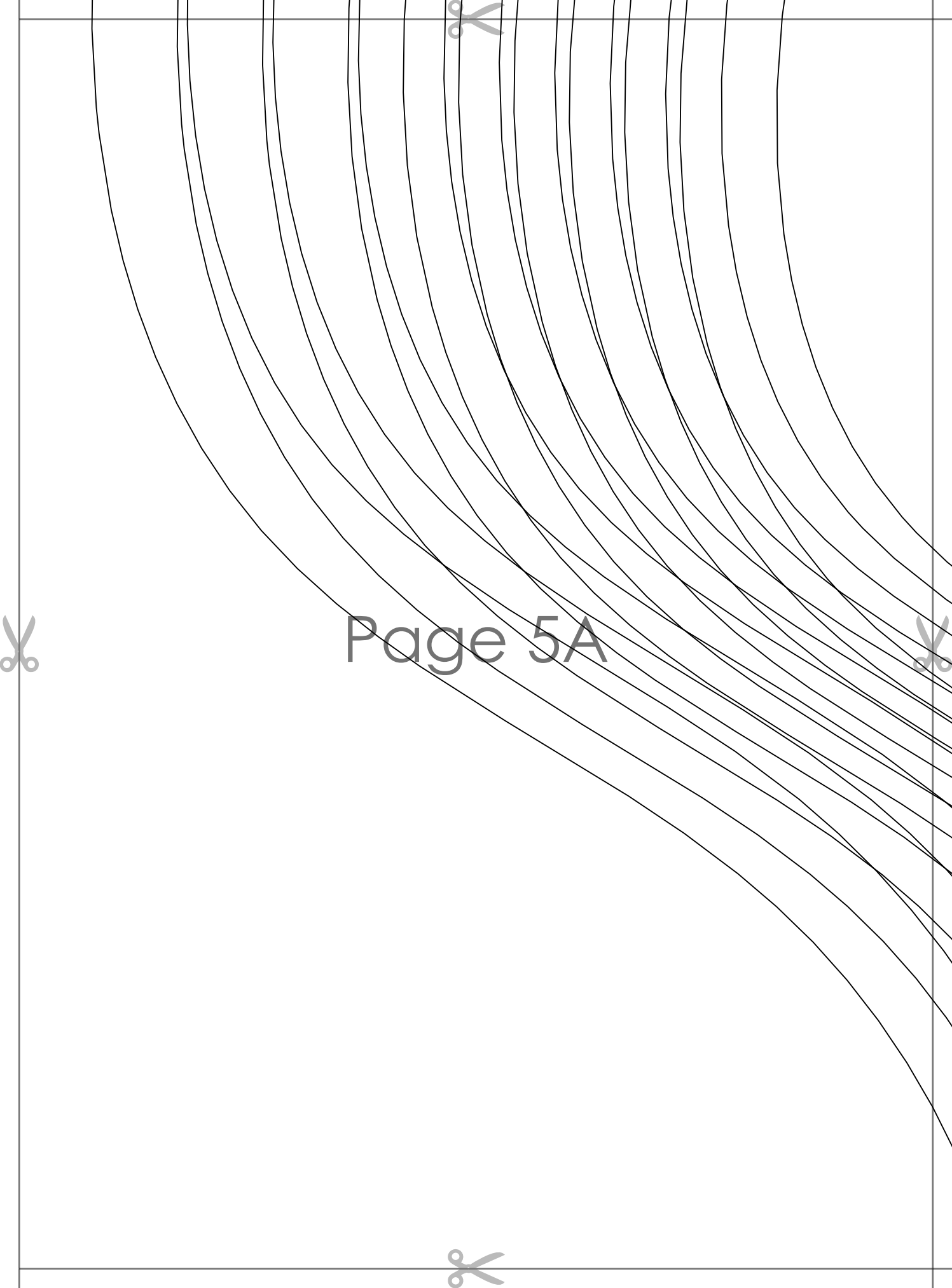
Page 4C





Page 4D





Page 5A



Page 5B

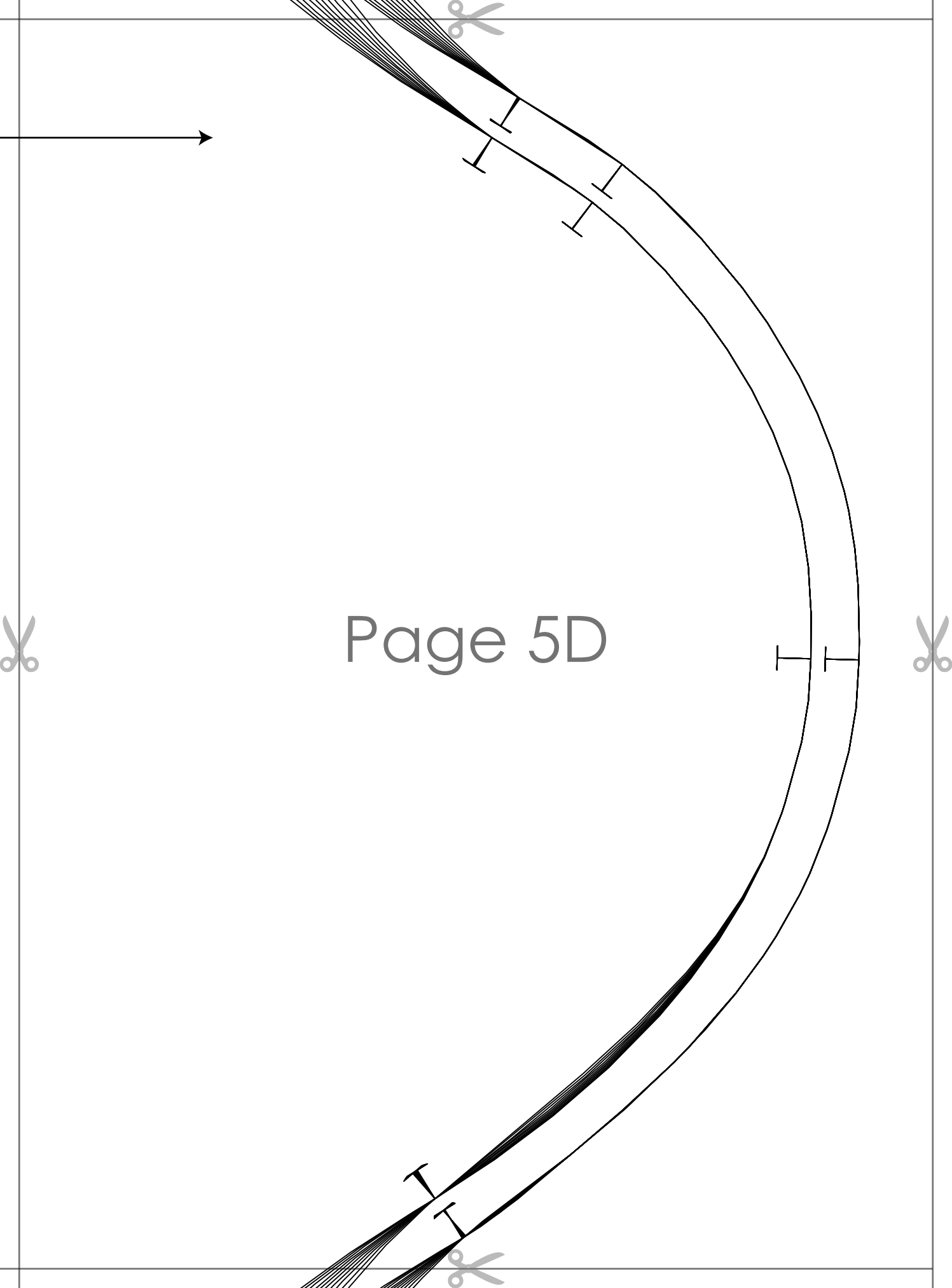




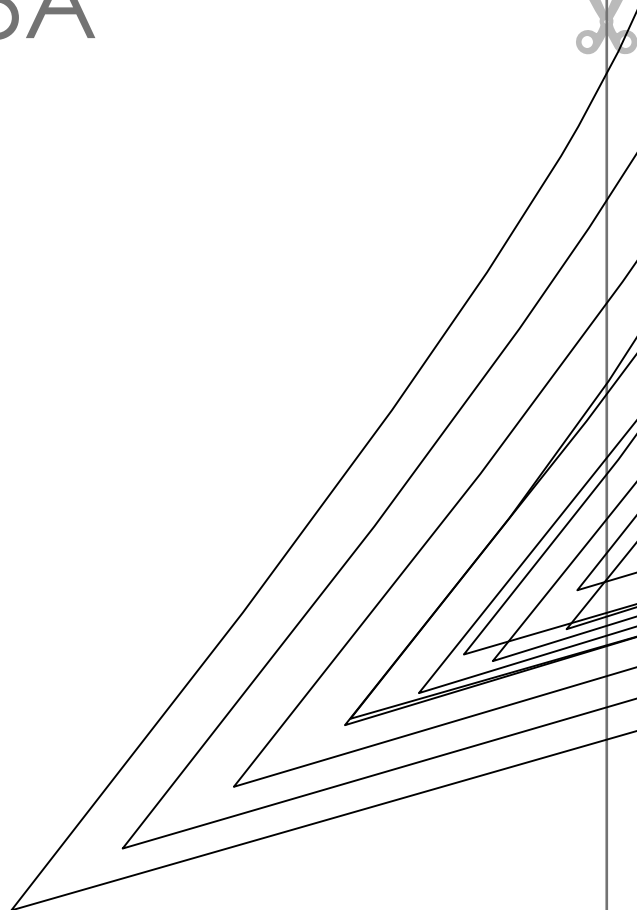
JOHANNE PUFFED SLEEVE TUNIC DRESS with seam allowance

~~Size 2000~~

SLEEVE
cut 2

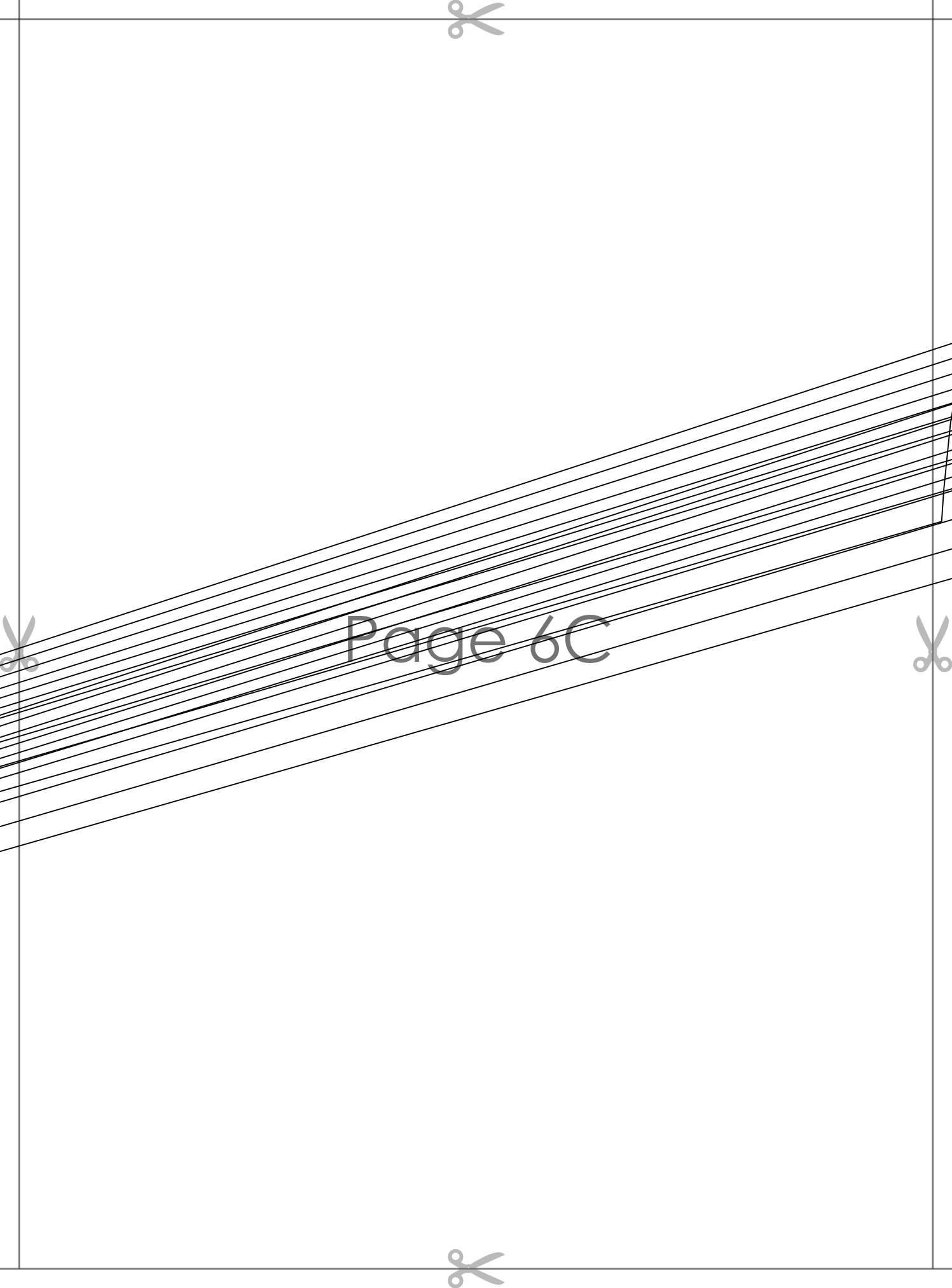


Page 6A

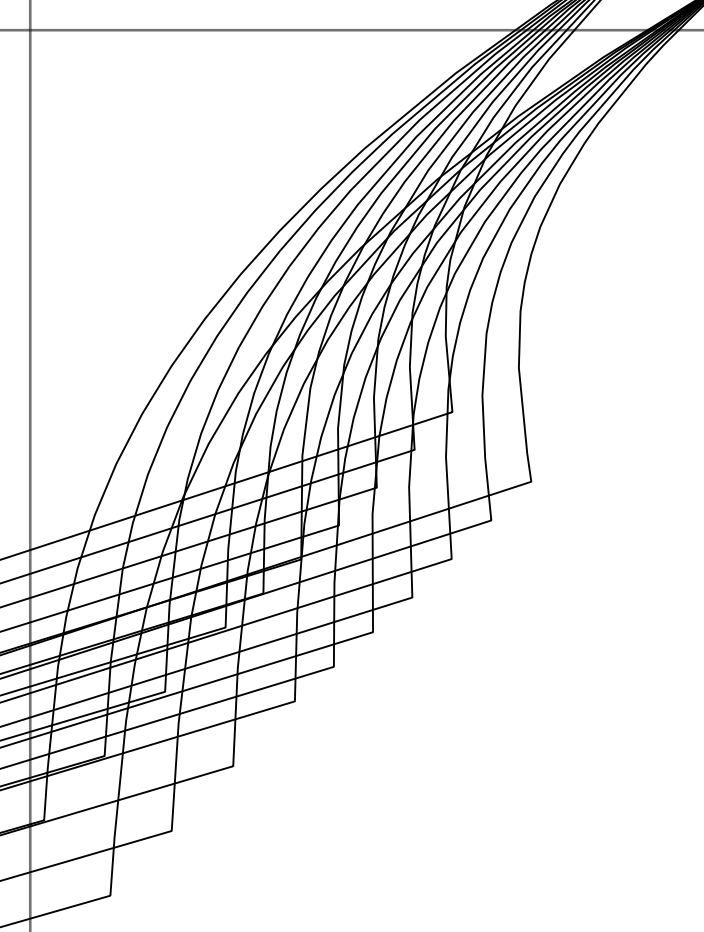


The page features a series of thin, black, wavy lines that originate from the left edge and curve towards the right. These lines are more densely packed in the upper half of the page and become more spread out towards the bottom. At the four corners of the page, there are small, light gray icons of scissors, indicating where to cut. The text "Page 6B" is centered in the middle of the page.

Page 6B



Page 6C



Page 6D

