

## SIZE TABLE

### TIANA'S CLOSET SEWING PATTERNS

Size code	XXS	XS	S	M	L	XL	XXL	3XL	4XL	5XL
Bust	centimeter	80	84	88	92	96	100	104	110	122
	inch	31.5	33.1	34.6	36.2	37.8	39.4	40.9	43.3	47.2
Waist	centimeter	60	64	68	72	76	80	84	90	102
	inch	23.6	25.2	26.8	28.3	29.9	31.5	33.1	35.4	40.2
Hip	centimeter	88	92	96	100	104	108	112	118	130
	inch	34.6	36.2	37.8	39.4	40.9	42.5	44.1	46.5	52.0

## PRINTING INSTRUCTIONS

- Tiana's Closet sewing patterns are made in Layered PDF format, which means all sizes are saved in one file and can be shown or hidden. It is recommended to use Adobe Acrobat Reader (paid version on Mac OS, free on Windows) or Foxit PDF Reader (free, works on Windows only) to read the file correctly. In order to choose the desired size(s), go to Layers tab of your PDF reader, uncheck all boxes except for the desired size(s) and the box Print for all sizes.

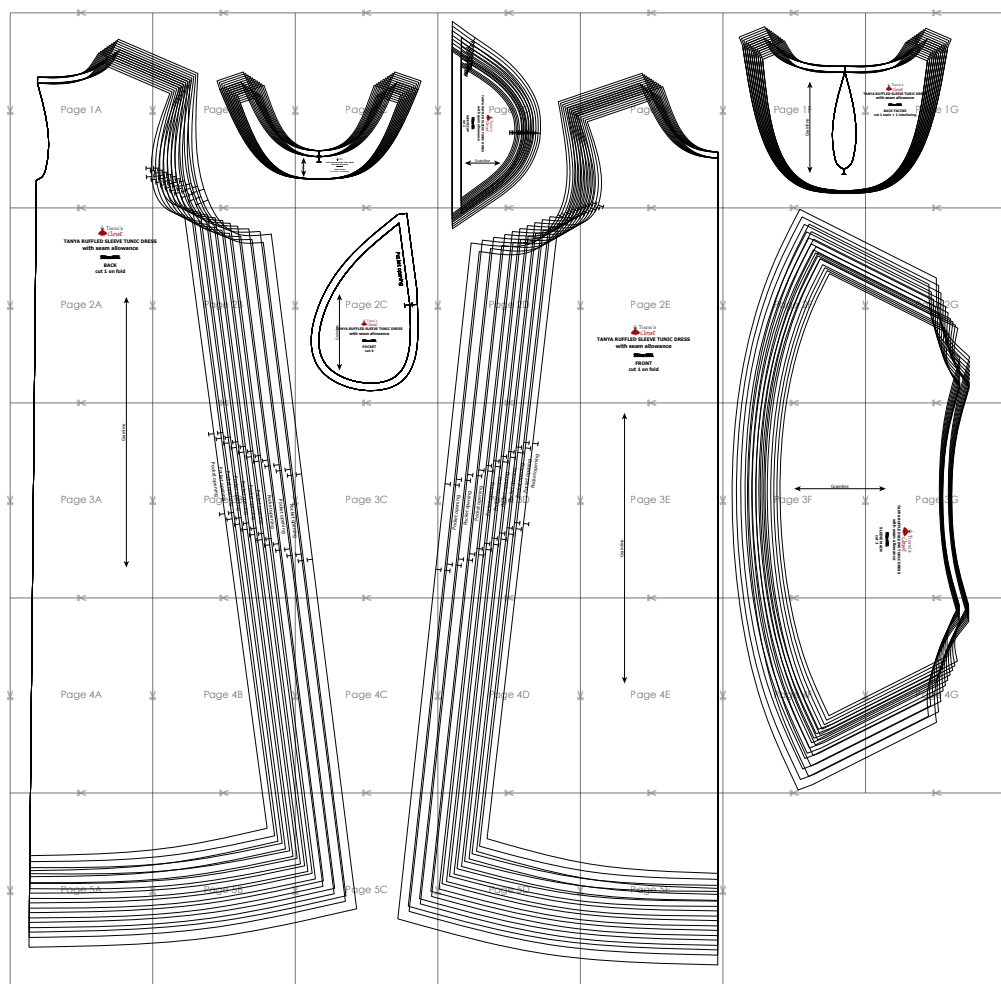
- When printing the pattern, go to Print settings, in the tab Scale choose Custom scale: 100% (or Scaling: None or Actual Size) to print true to size. Note: some computers print smaller than true size even when you choose 100% scale, so you will have to adjust the scale to a little larger than 100% and measure the test square until you get the true size.

- The test square is 10 centimeters (horizontally) and 4 inches (vertically).

- Always print the first page of the file and measure to avoid waste of paper.

- After printing the pattern, cut the pages along the lines with scissors icon, align and tape the pages according to their sequences. For example, page 1A is taped to page 1B in a row, and page 1A is taped to page 2A in a column. Please see the image below to see how the pages line up.

- You can find photo instruction for printing sewing patterns on Tiana's Closet website: <https://tianas-closet.com/index.php/how-to-print-tianas-closet-patterns/>



Page 1A

Page 18

Page 1C

Grainline



**TANYA RUFFLED SLEEVE TUNIC DRESS**  
with seam allowance

~~Size 20-22~~

**FRONT FACING**  
cut 1 main + 1 interfacing

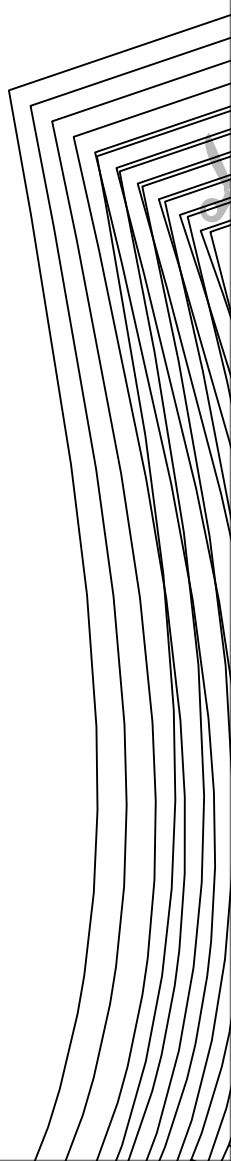
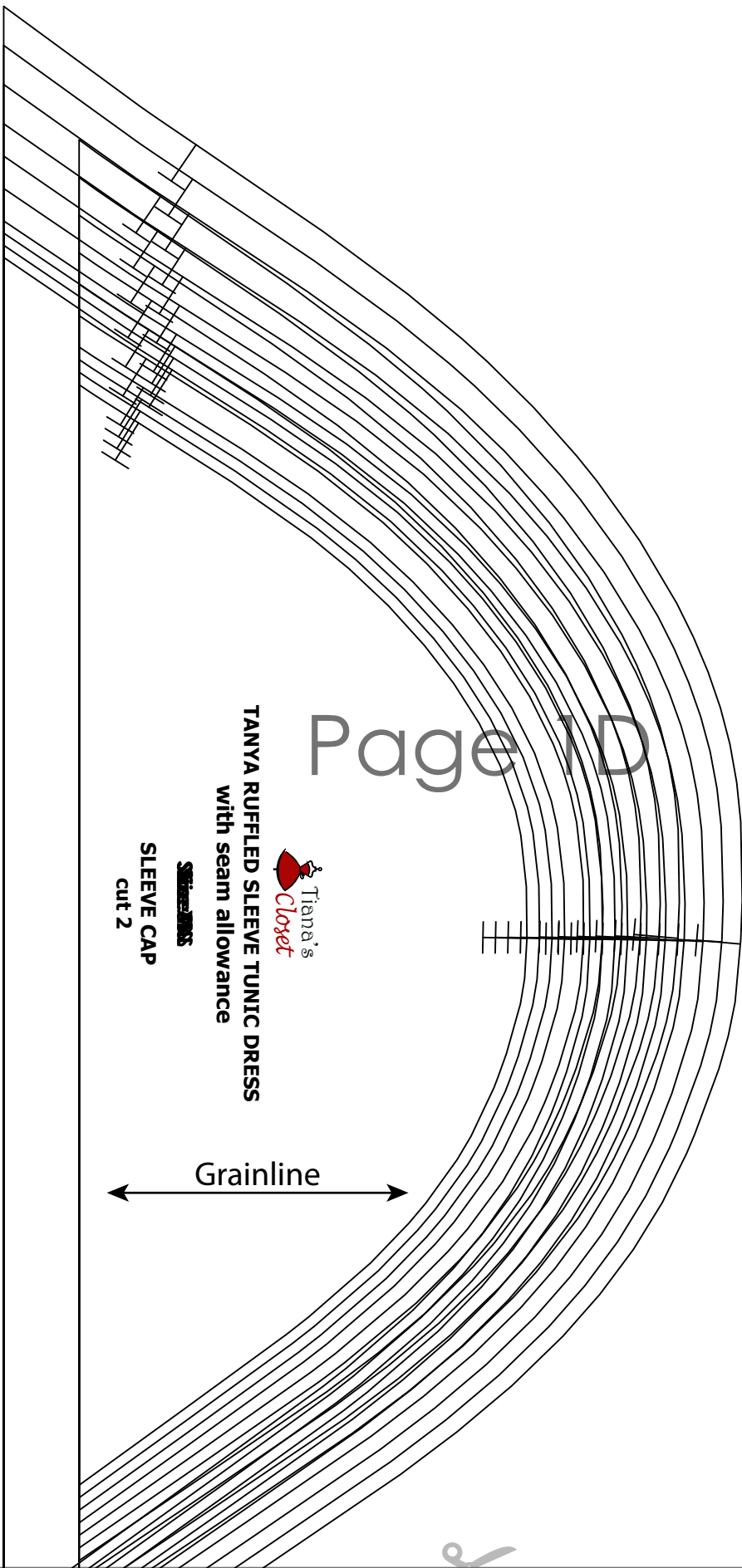


**TANYA RUFFLED SLEEVE TUNIC DRESS**  
with seam allowance

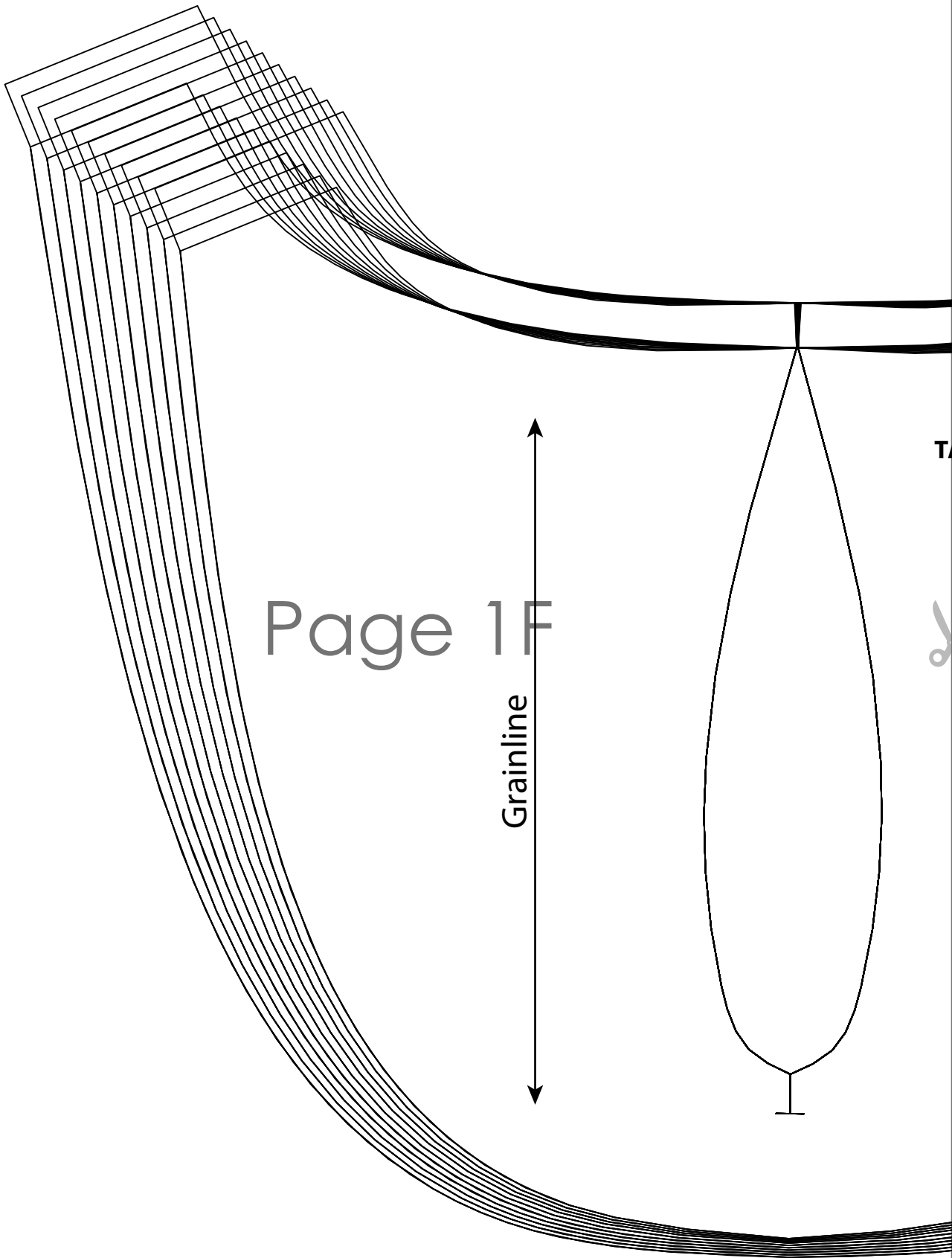
**Sleeve Pattern**

**SLEEVE CAP**  
cut 2

Grainline



Page 1E



Page 1F

Grainline



**ANYA RUFFLED SLEEVE TUNIC DRESS**  
**with seam allowance**

**~~Size M~~**

**BACK FACING**  
**cut 1 main + 1 interfacing**

Page 1G





# **TANYA RUFFLED SLEEVE TUNIC DRESS** **with seam allowance**

**~~Size 10~~**

**BACK**  
**cut 1 on fold**

Page 2A

SS

Page 2B

Page 2C

Grainline

pocket opening



Tiana's  
Closet

**TANYA RUFFLED SLEEVE TUNIC DRESS  
with seam allowance**

~~Size 20-22~~

**POCKET  
cut 4**

The background features a series of overlapping, slightly curved rectangular shapes that create a sense of depth and movement. These shapes are outlined in thin black lines and are arranged in a way that suggests a stack of pages or a series of frames. The overall effect is a dynamic, layered composition. 

Page 2D

Page 2E



**TANYA RUFFLED SLEEVE TUNIC DRESS  
with seam allowance**

**~~Size 20-22~~**

**FRONT  
cut 1 on fold**





Page 2F

Page 2G

Page 3A

Grainline





Pocket opening

Pocket opening

Pocket opening

Pocket opening

Pocket opening

Pocket opening

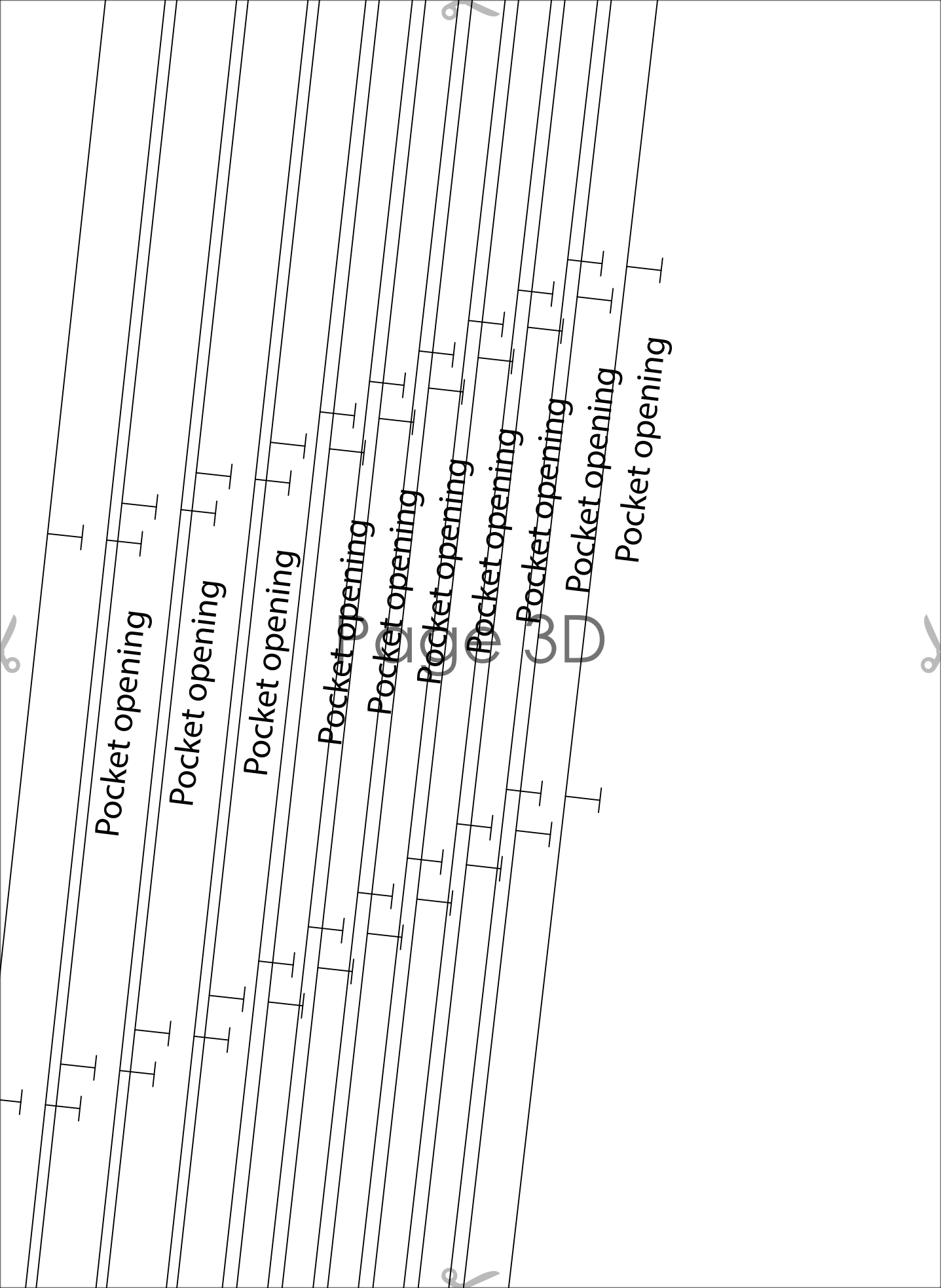
Pocket opening

Pocket opening

Pocket opening

Pocket opening

Page 3C



Pocket opening

Pocket opening

Pocket opening

Pocket opening

Pocket opening

Pocket opening

Pocket opening

Pocket opening

Pocket opening

Pocket opening

Page 3E

Grainline



Grainline

Page 3F



**TANYA RUFFLED SLEEVE TUNIC DRESS**  
**with seam allowance**

**Sleeves**

**SLEEVE MAIN**  
**cut 2**



Page 4A

Page 4B



Page 4C

Page 4D



Page 4E

Page 4F



Page 4G

Page 5A

Page 5B



Page 5C





Page 5D

Page 5E