

Centimeters

012345678910

Inches

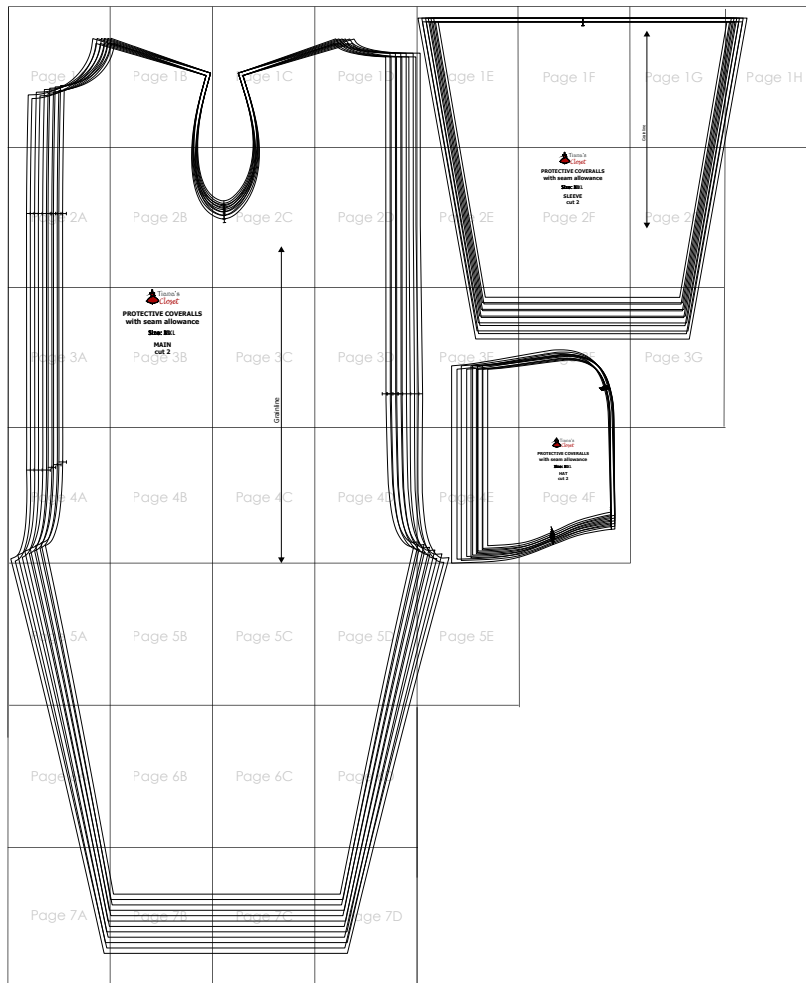
01234

SIZE TABLE FOR TIANA'S CLOSET PATTERNS

	Size	XXS	XS	S	M	L	XL	XXL	3XL	4XL	5XL
Bust	centimeter	80	84	88	92	96	100	104	110	116	120
	inch	31.5	33.1	34.6	36.2	37.8	39.4	40.9	43.3	45.7	47.2
Waist	centimeter	60	64	68	72	76	80	84	90	96	102
	inch	23.6	25.2	26.8	28.3	29.9	31.5	33.1	35.4	37.8	40.2
Hip	centimeter	88	92	96	100	104	108	112	118	126	132
	inch	34.6	36.2	37.8	39.4	40.9	42.5	44.1	46.5	49.6	52.0

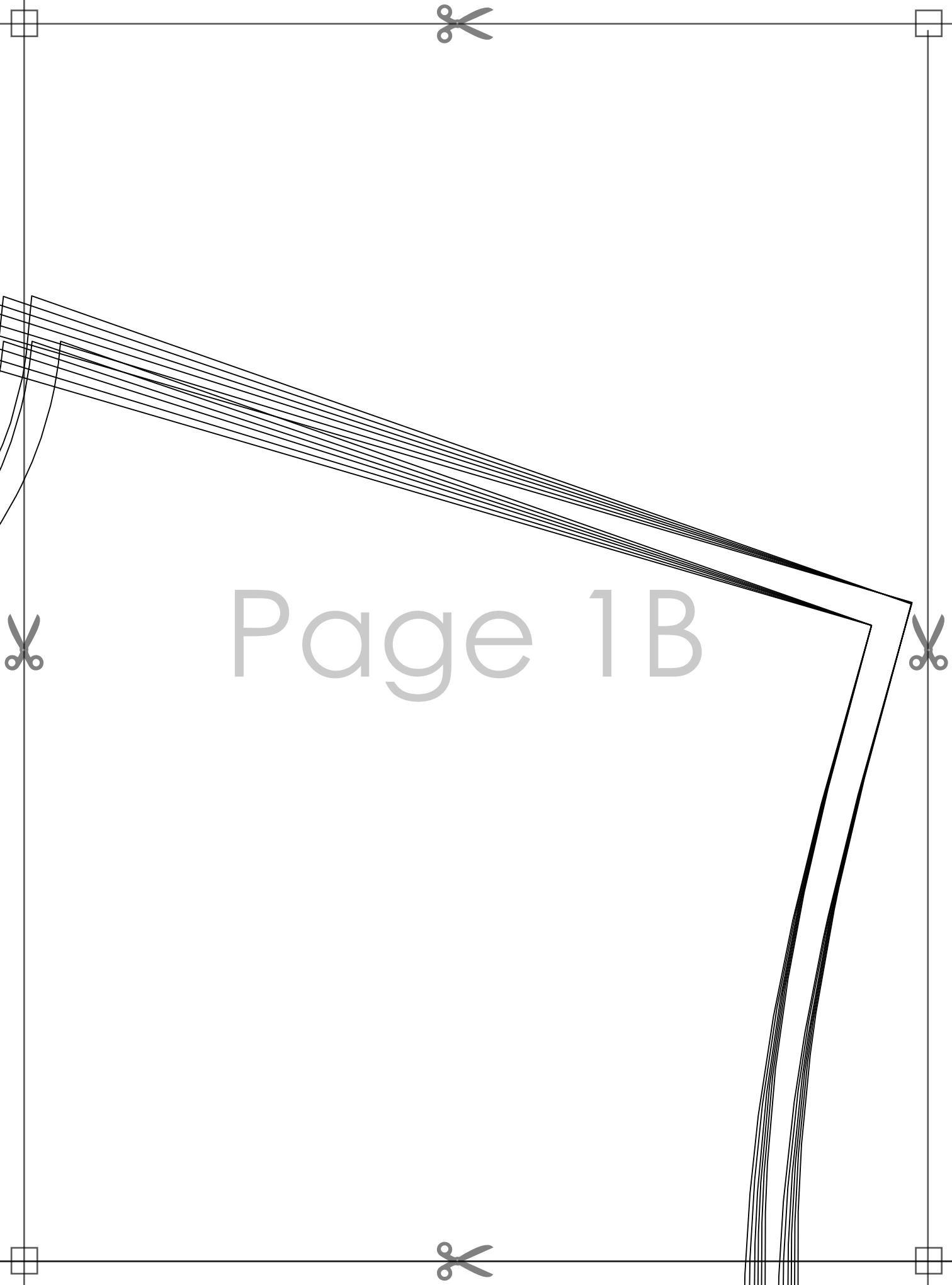
Printing instruction:

- Patterns are made in layered PDF format, where all sizes are saved in one file and can be shown or hidden. In order to choose the desired size, go to Layers tab of your PDF reader, uncheck all boxes except for the desired size(s) and the box Print for all sizes.
- When printing the pattern, go to Print settings, in the tab Scale choose Custom scale: 100% (or Actual size) to print true to size. Note: some computers print smaller than true size even when you choose 100%, so you will have to adjust the scale to a little larger than 100% and measure the test square until you get the true size.
- The test square is 10 centimeters (horizontally) and 4 inches (vertically).
- Always print the first page of the file and measure first to avoid waste of paper.
- After printing, cut the pages along the lines with scissors icon and align and tape the pages to their sequences. For example, 1A is taped to 1B in a row, and 1A is taped to 2A in a column.
- You can see photo instruction on Tiana's Closet website: <https://tianas-closet.com/index.php/how-to-print-tianas-closet-patterns/>

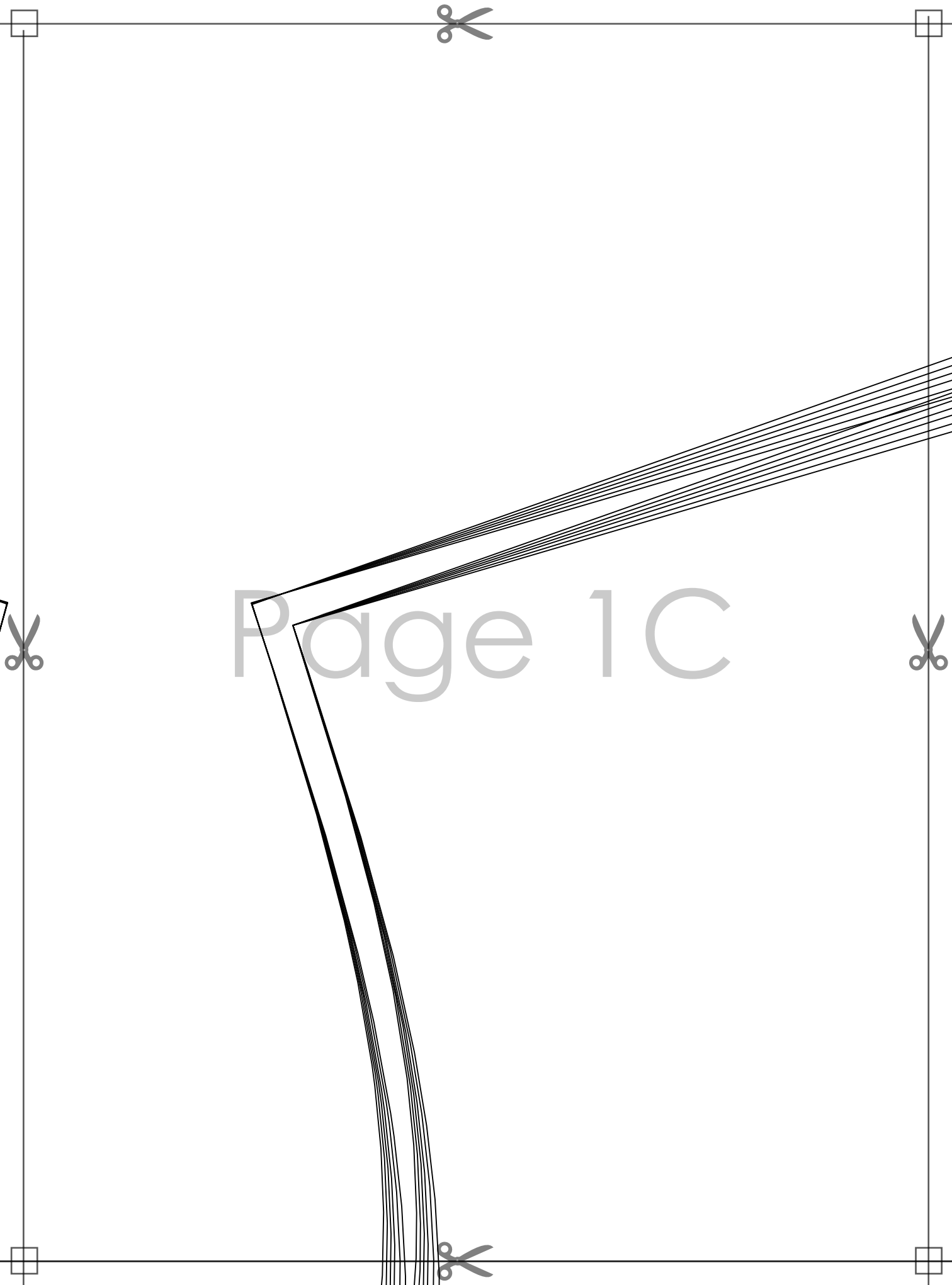


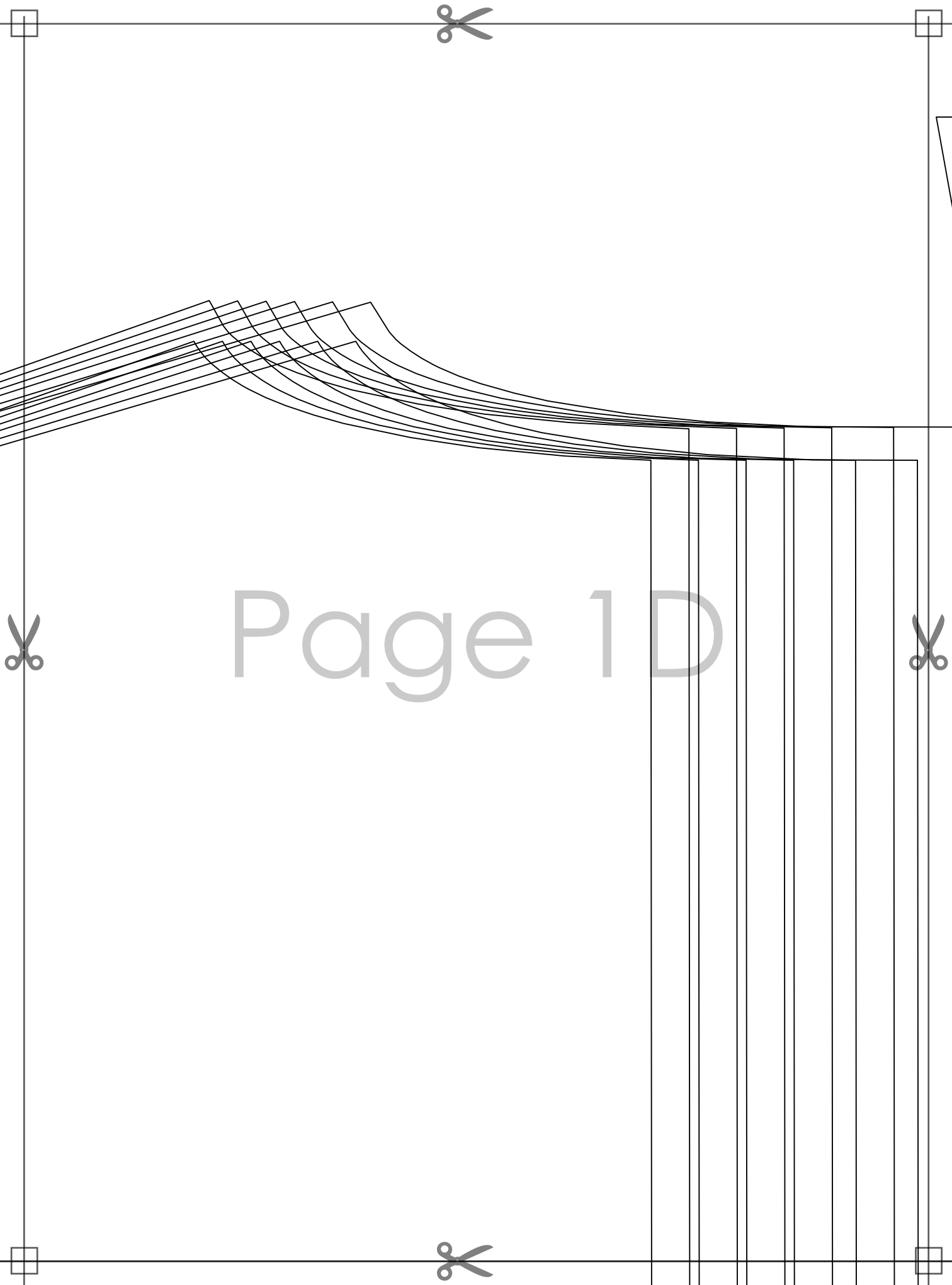
Page 1A



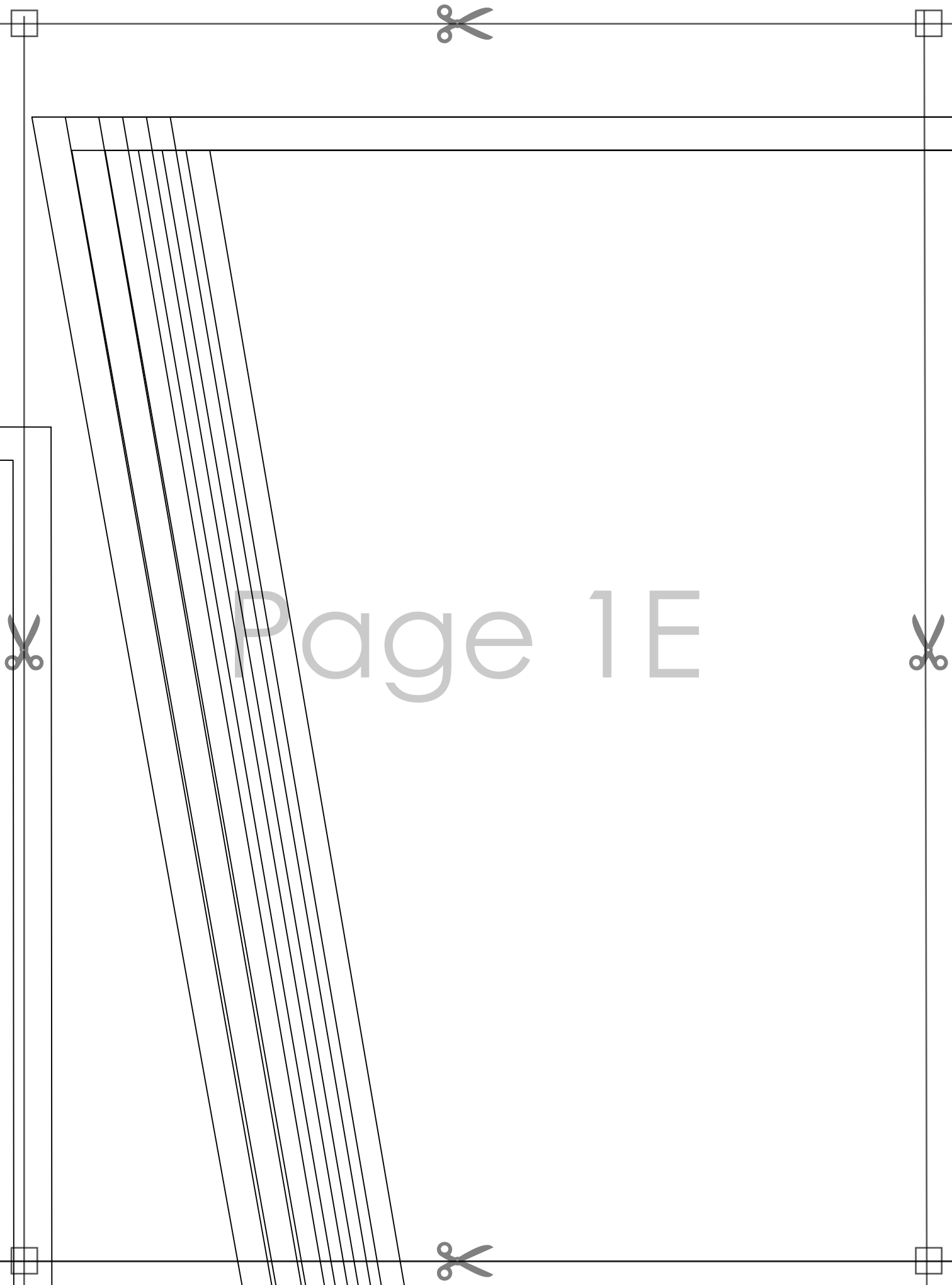


Page 1B

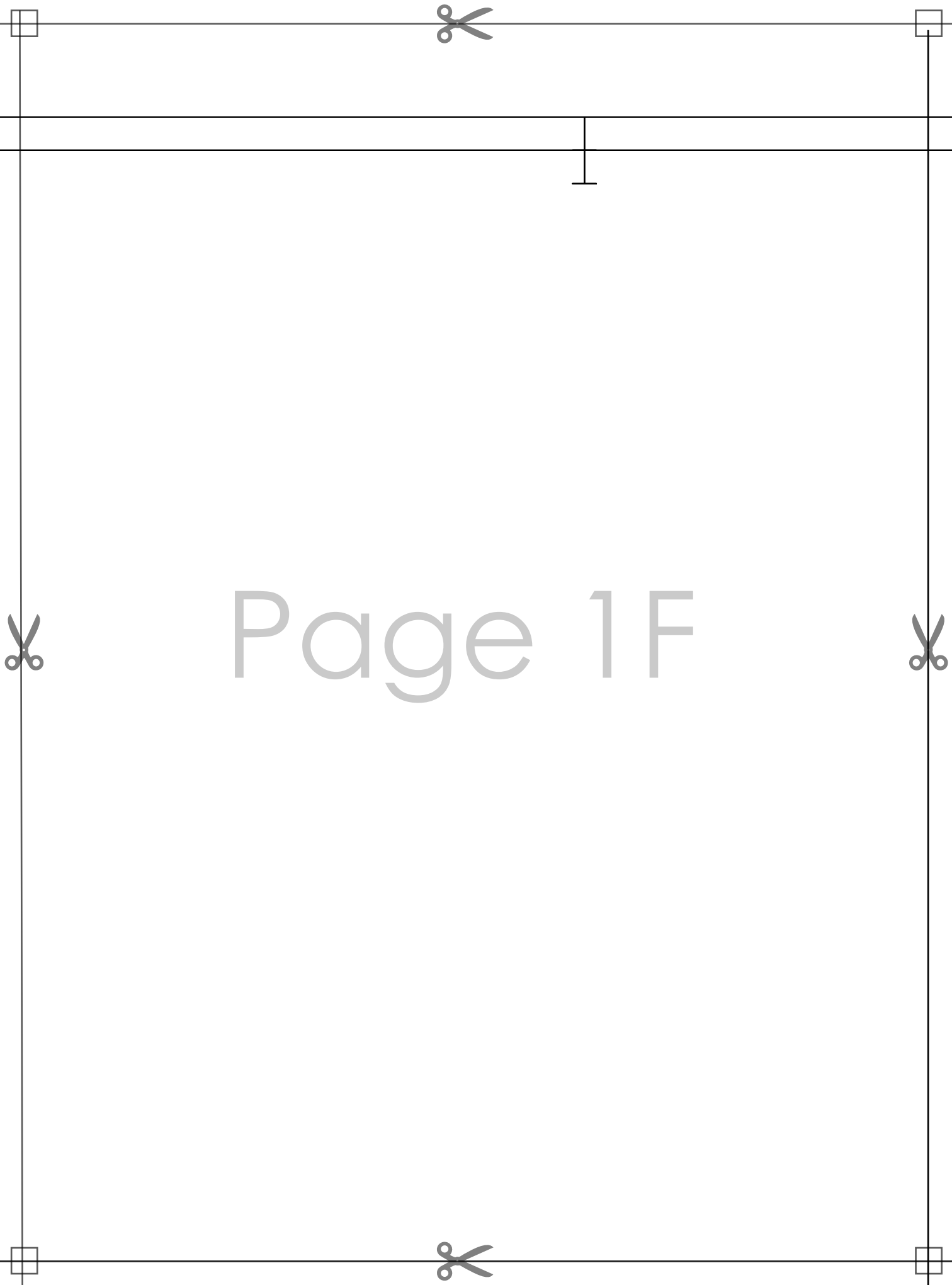




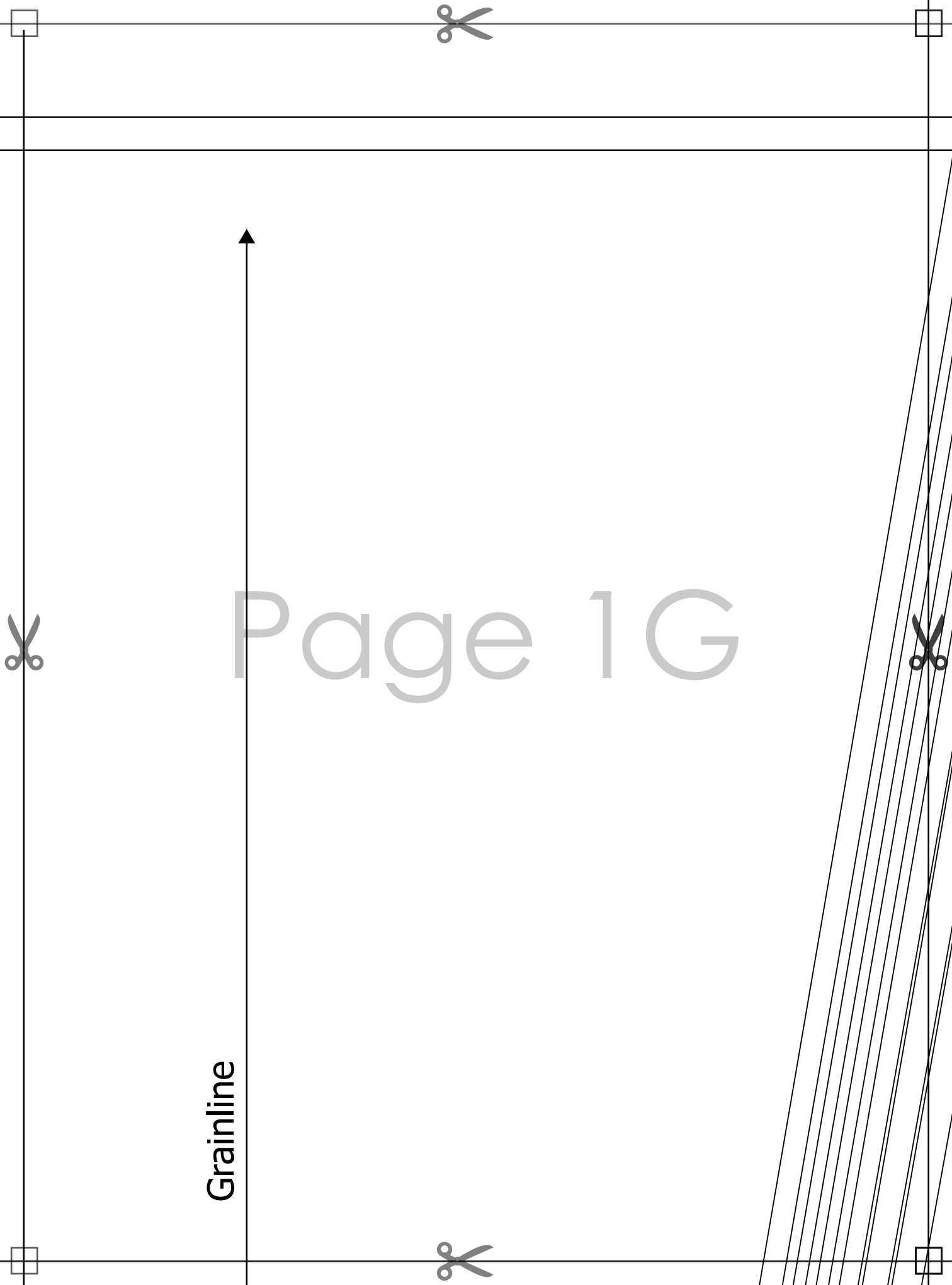
Page 1D



Page 1E



Page 1F



Page 1G

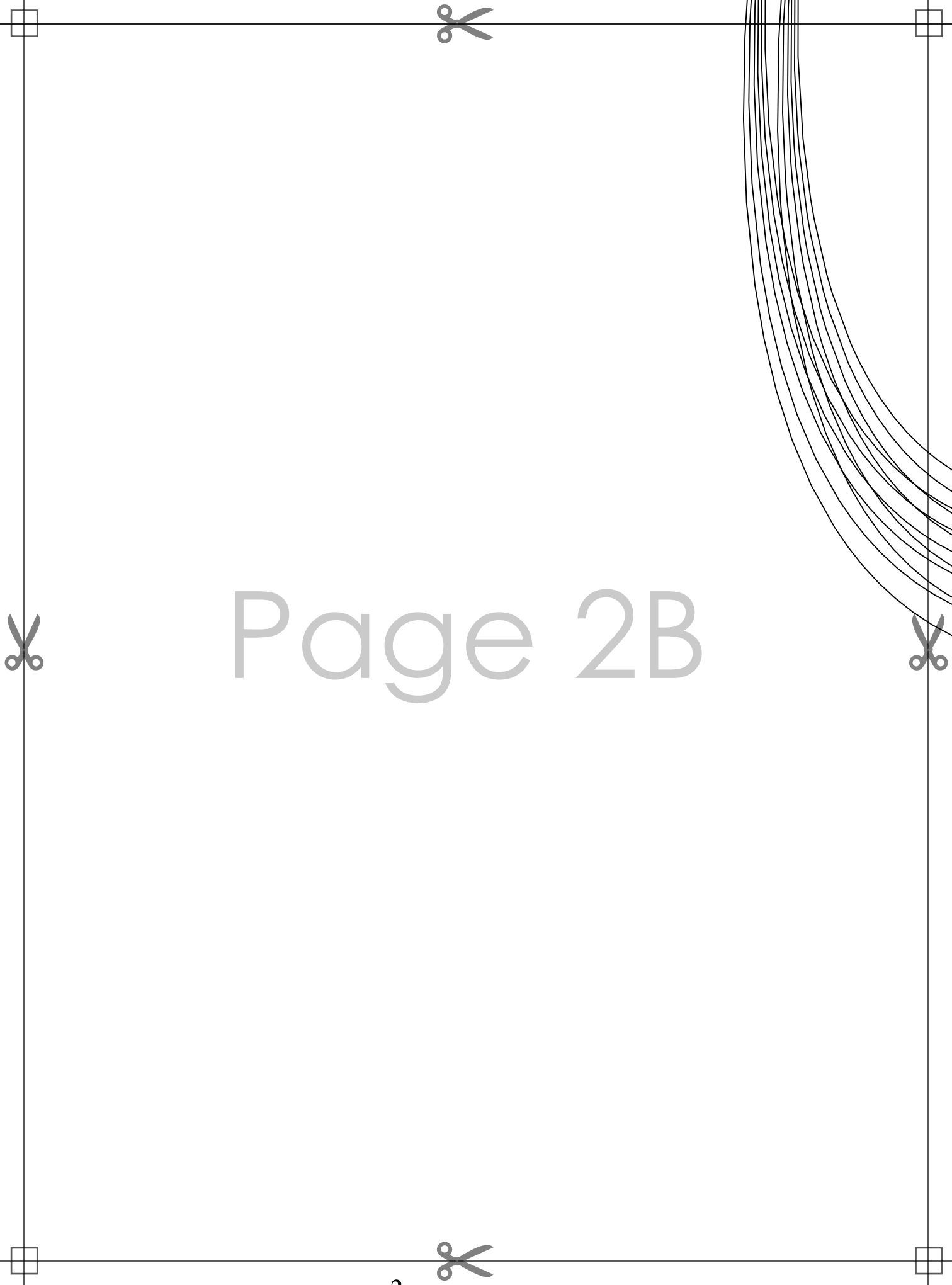
Grainline



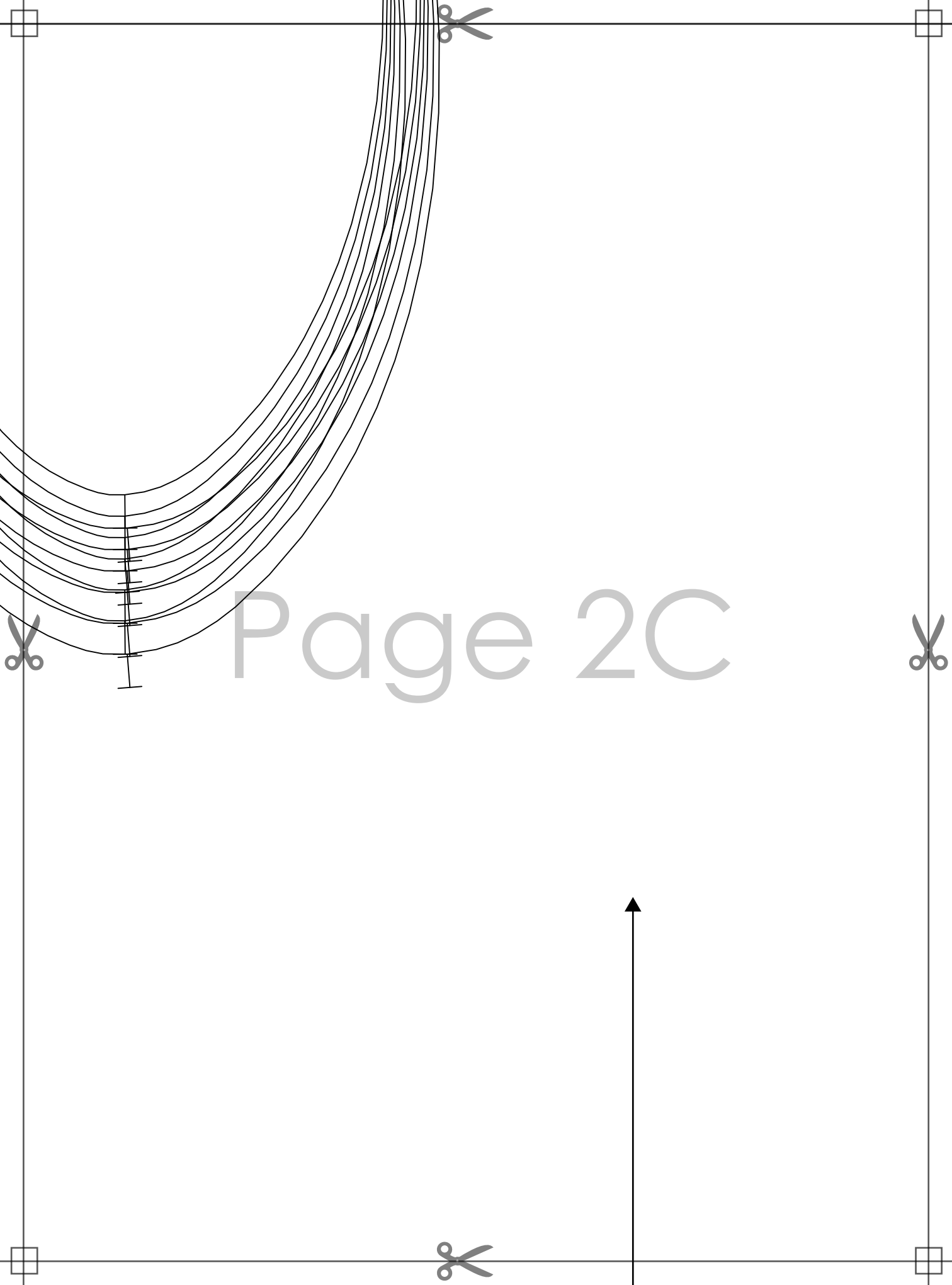


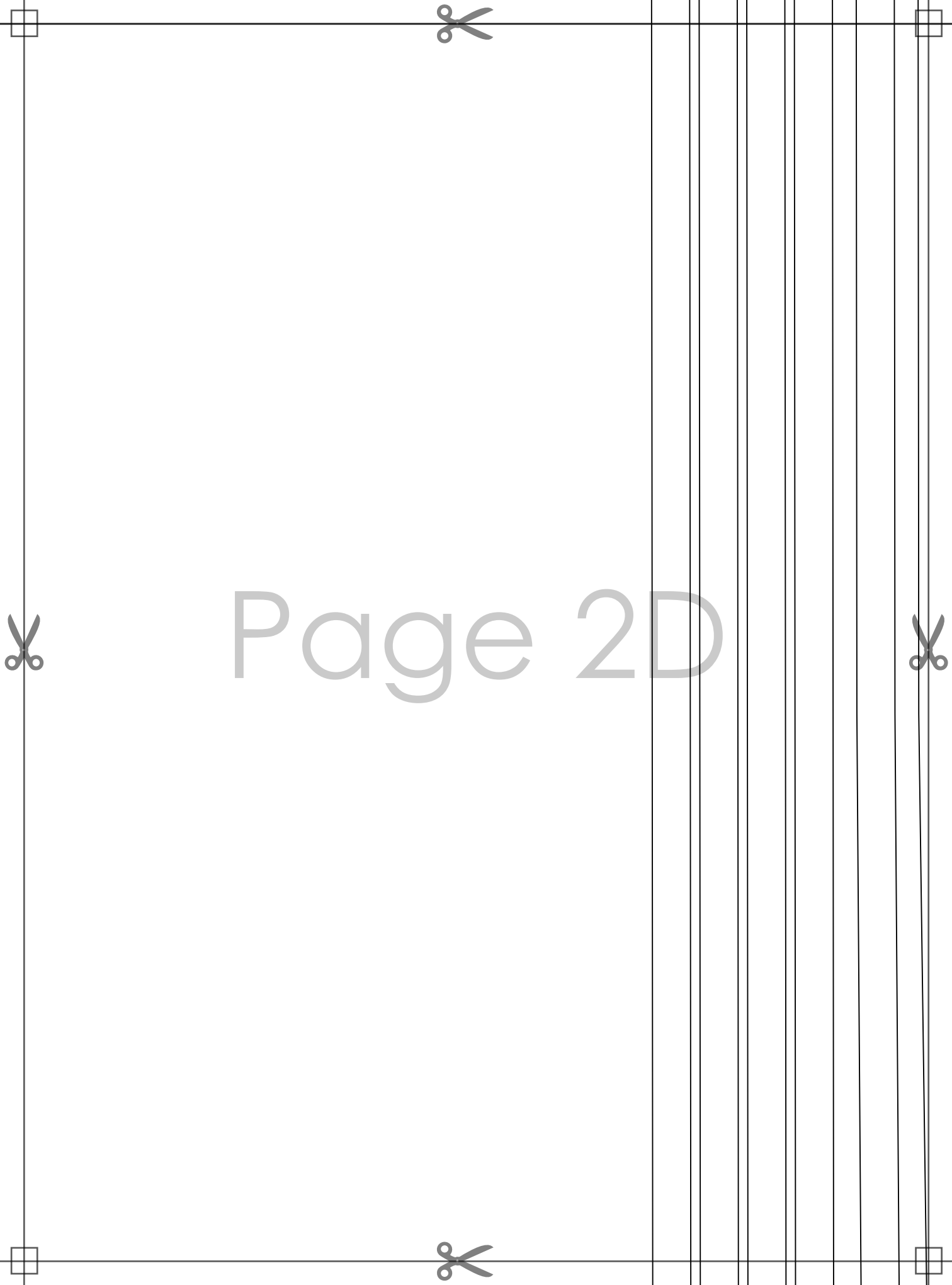
Page 2A





Page 2B





Page 2D

Page 2E

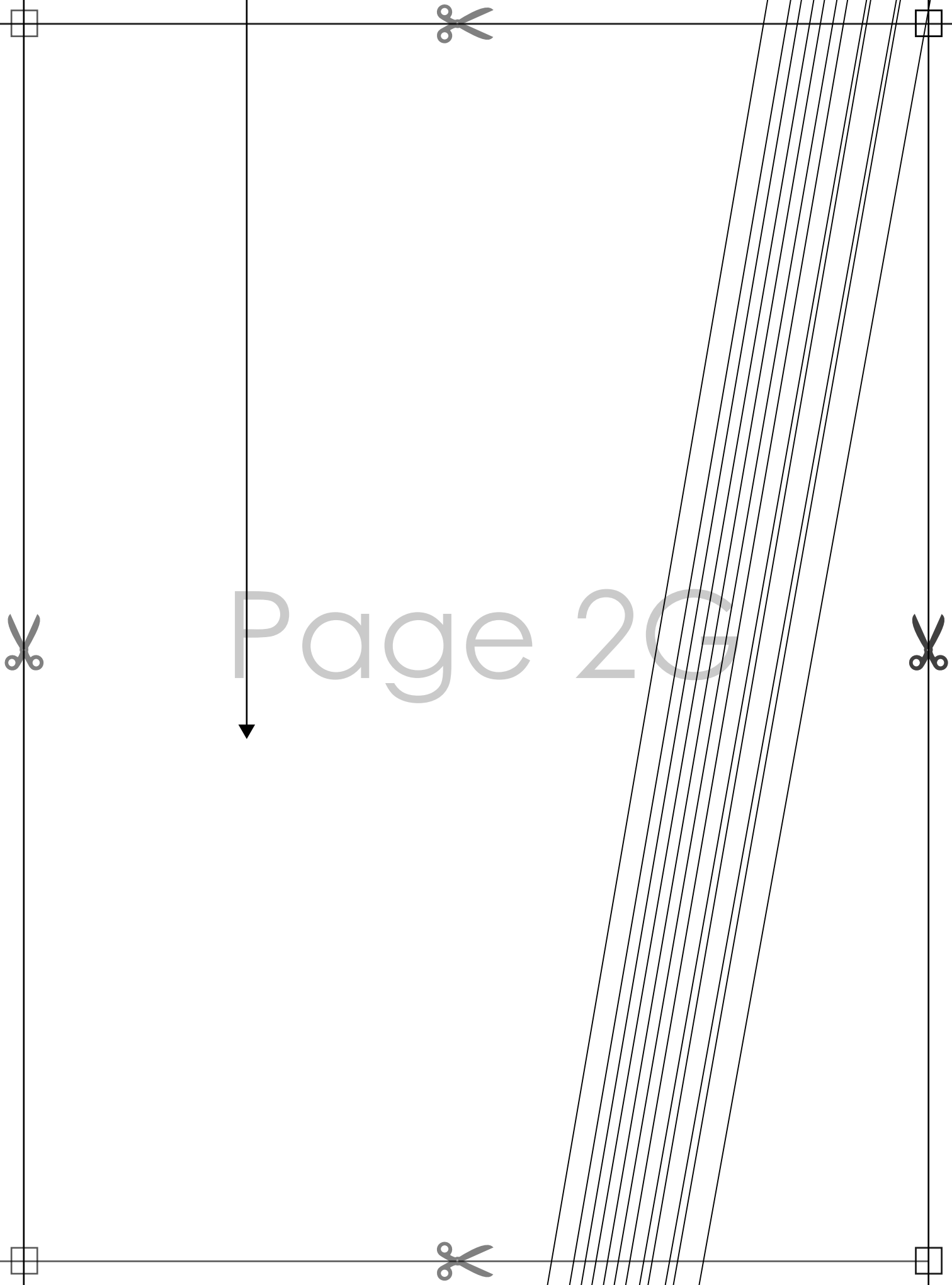


# **PROTECTIVE COVERALLS with seam allowance**

**Size: ~~XXL~~**

**SLEEVE  
cut 2**

Page 2F



Page 3A





# **PROTECTIVE COVERALLS with seam allowance**

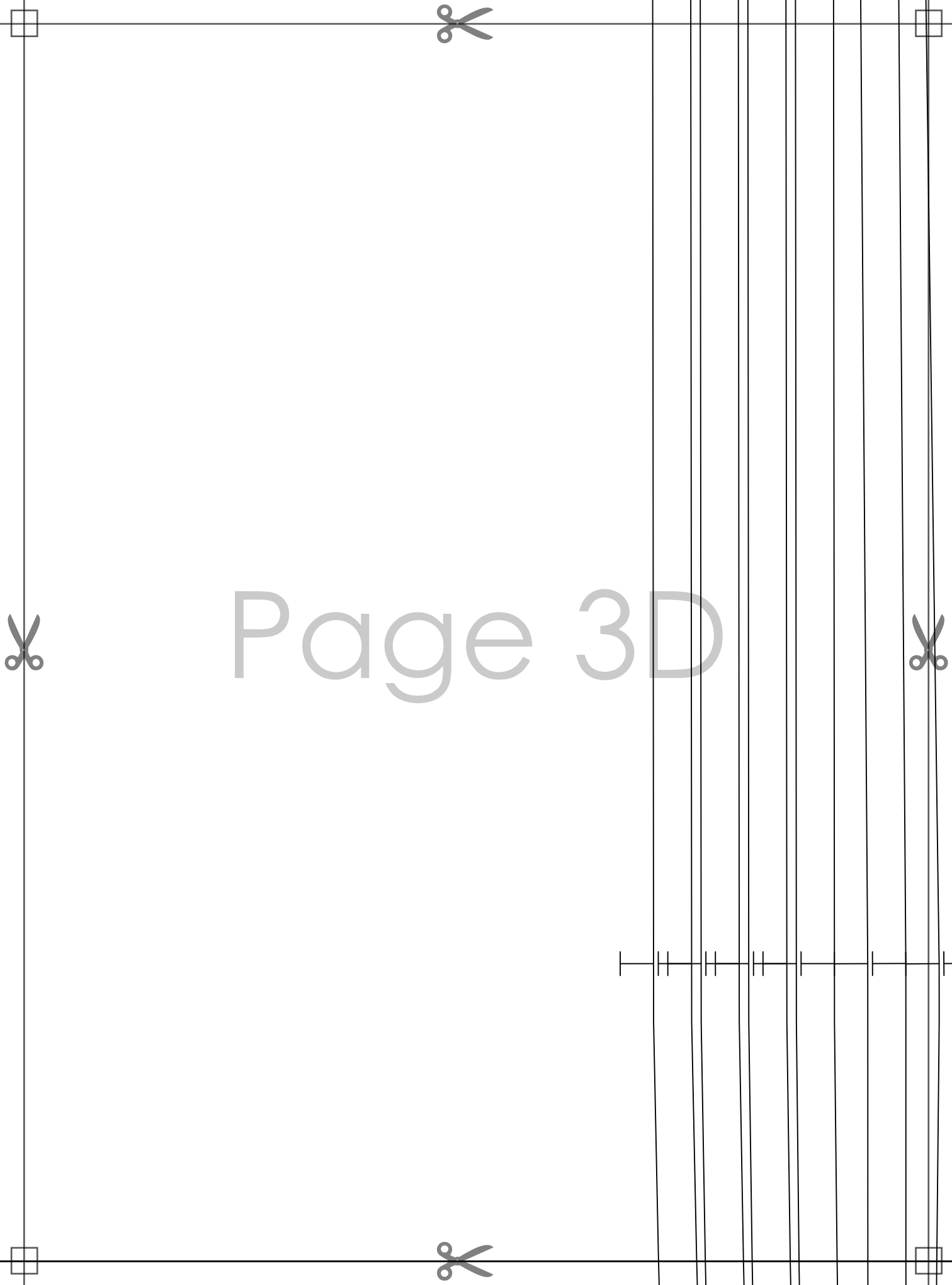
**Size: ~~XXL~~**

**MAIN  
cut 2**

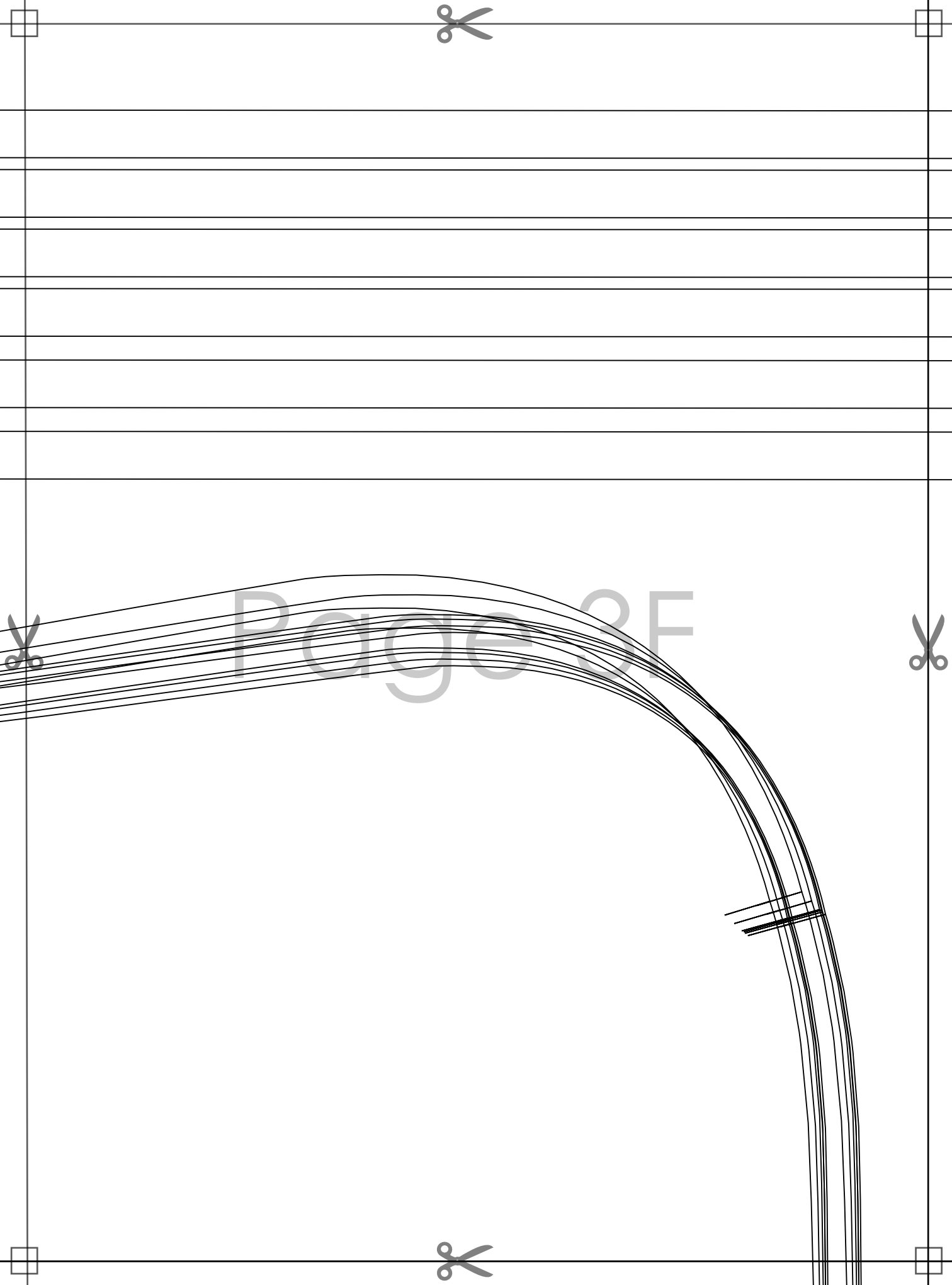
Page 3B

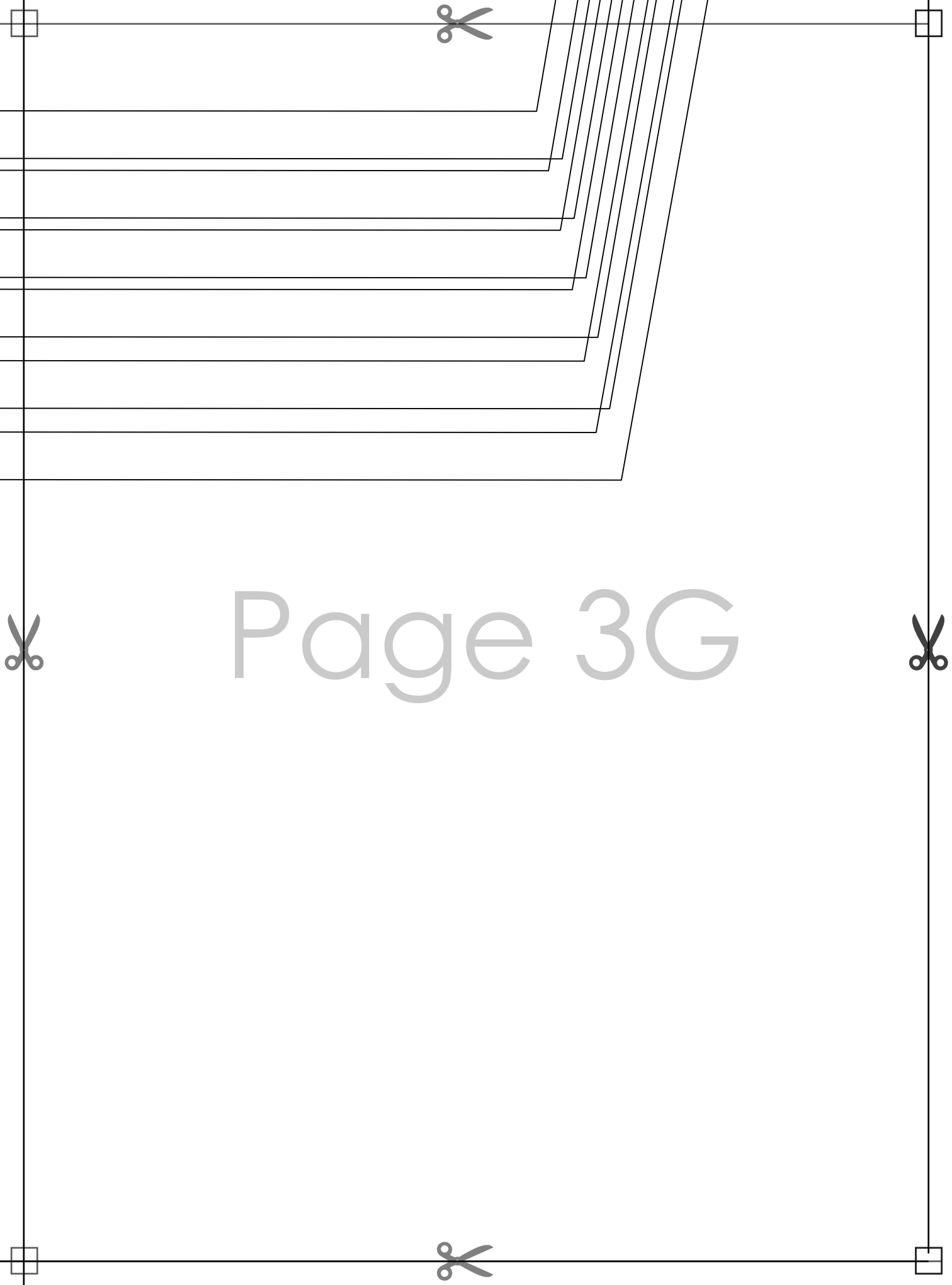
Page 3C

Grainline

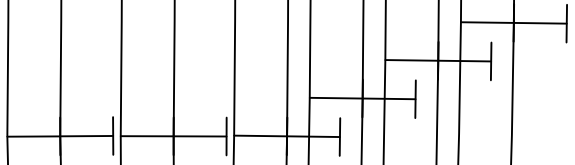


Page 3E





Page 3G



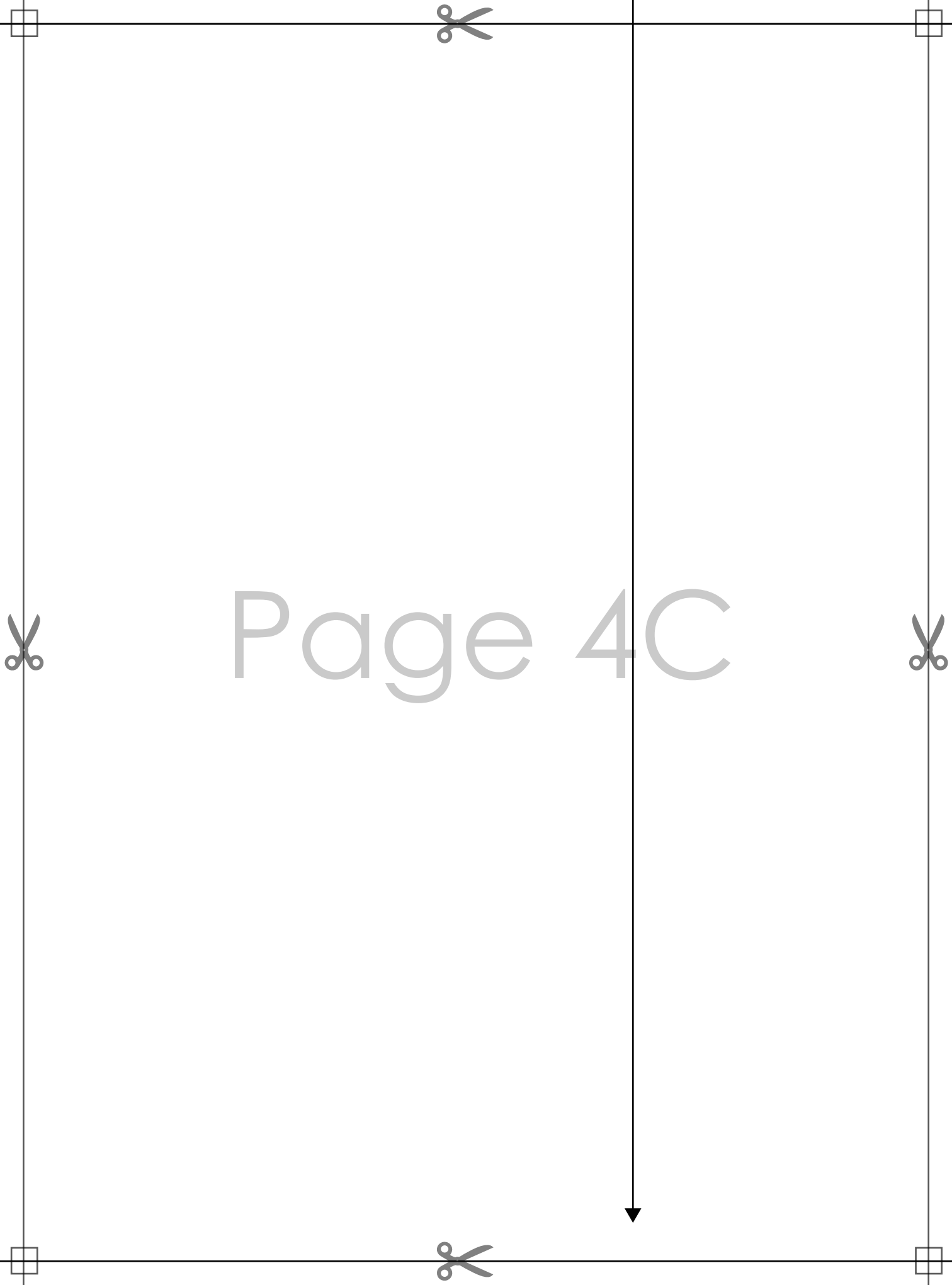
Page 4A



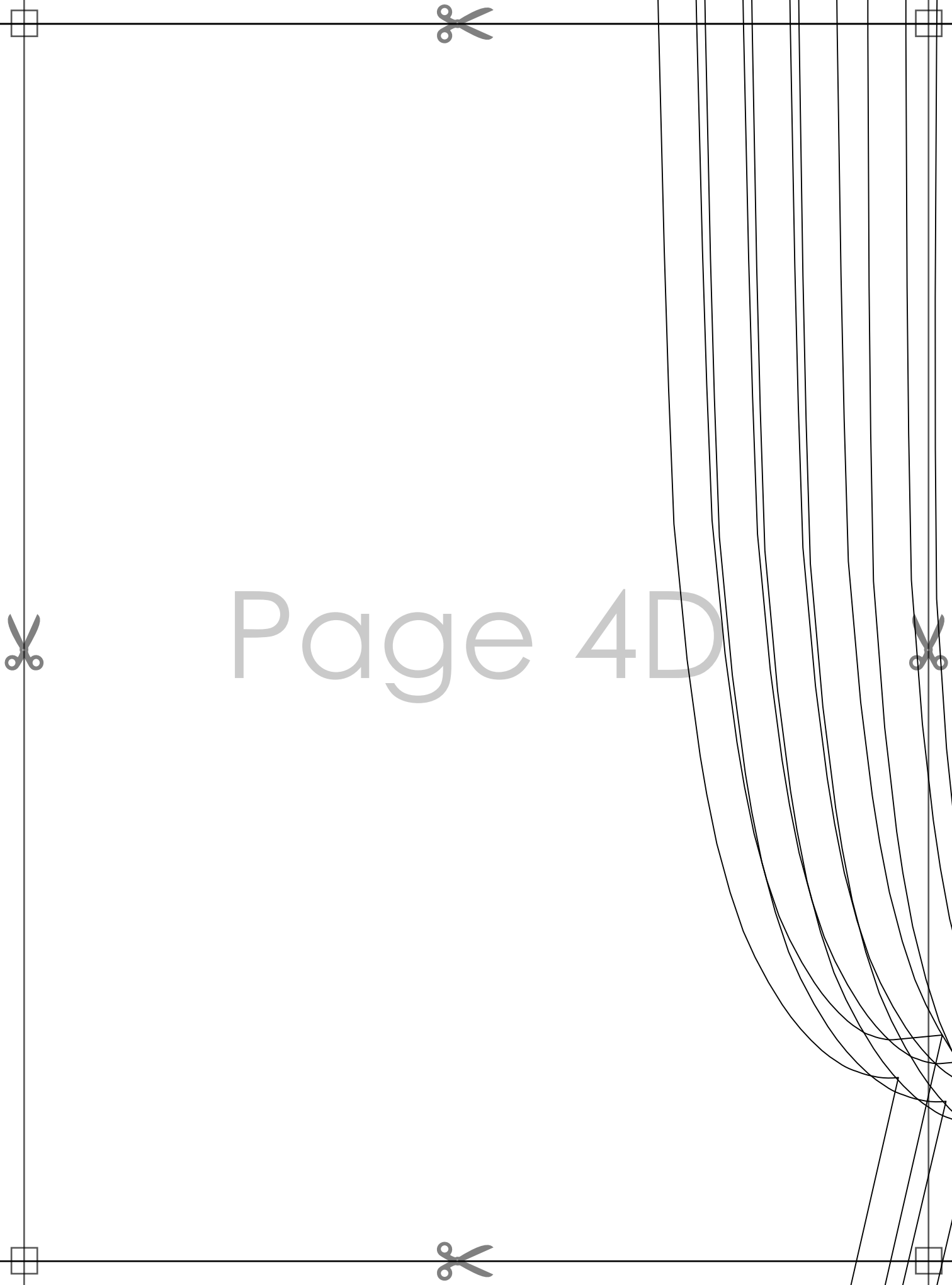


Page 4B

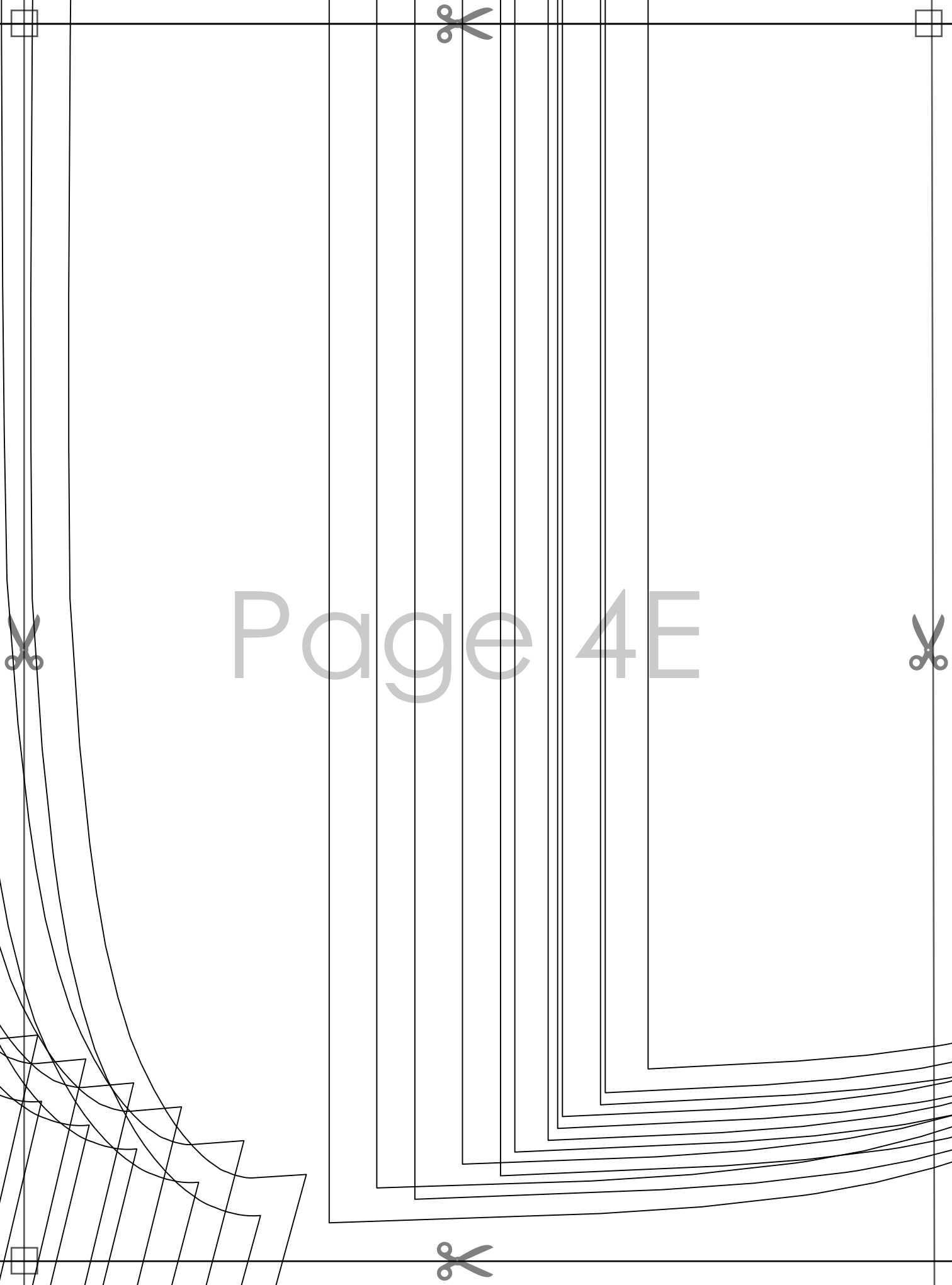




Page 4C



Page 4D



Page 4E

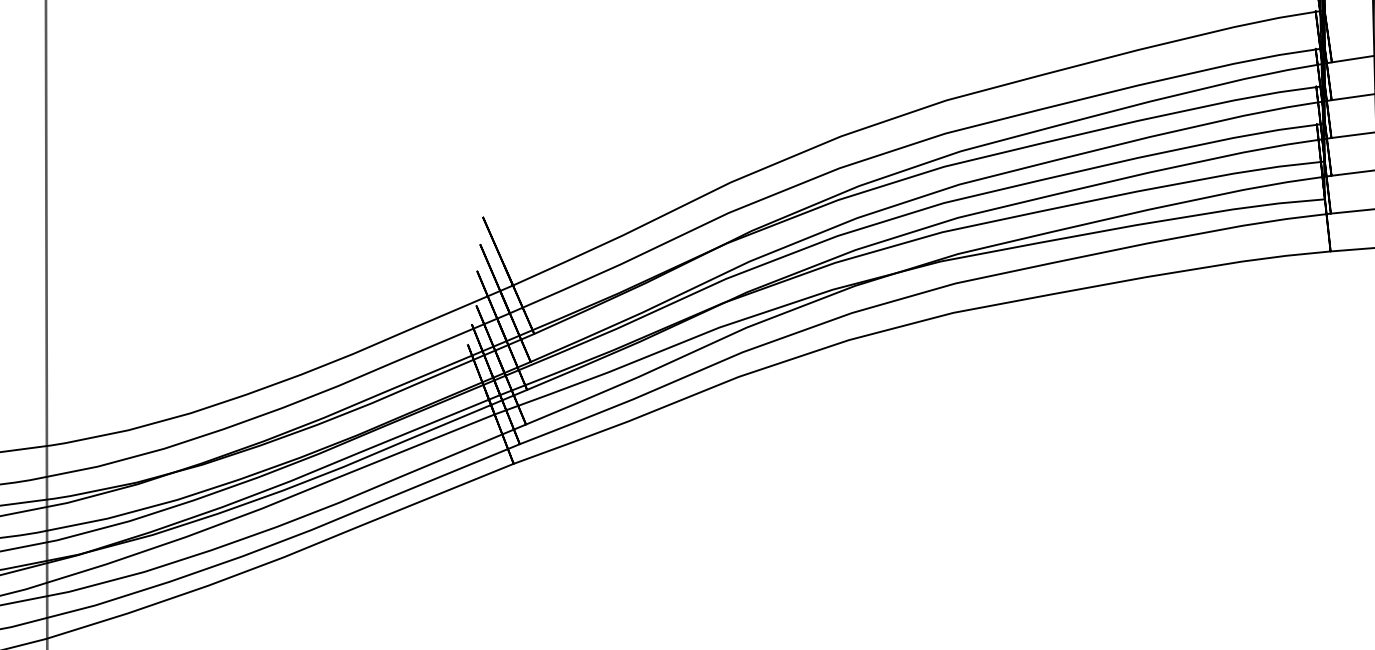


# **PROTECTIVE COVERALLS with seam allowance**

**Size: ~~XXL~~**

**HAT  
cut 2**

Page 4F





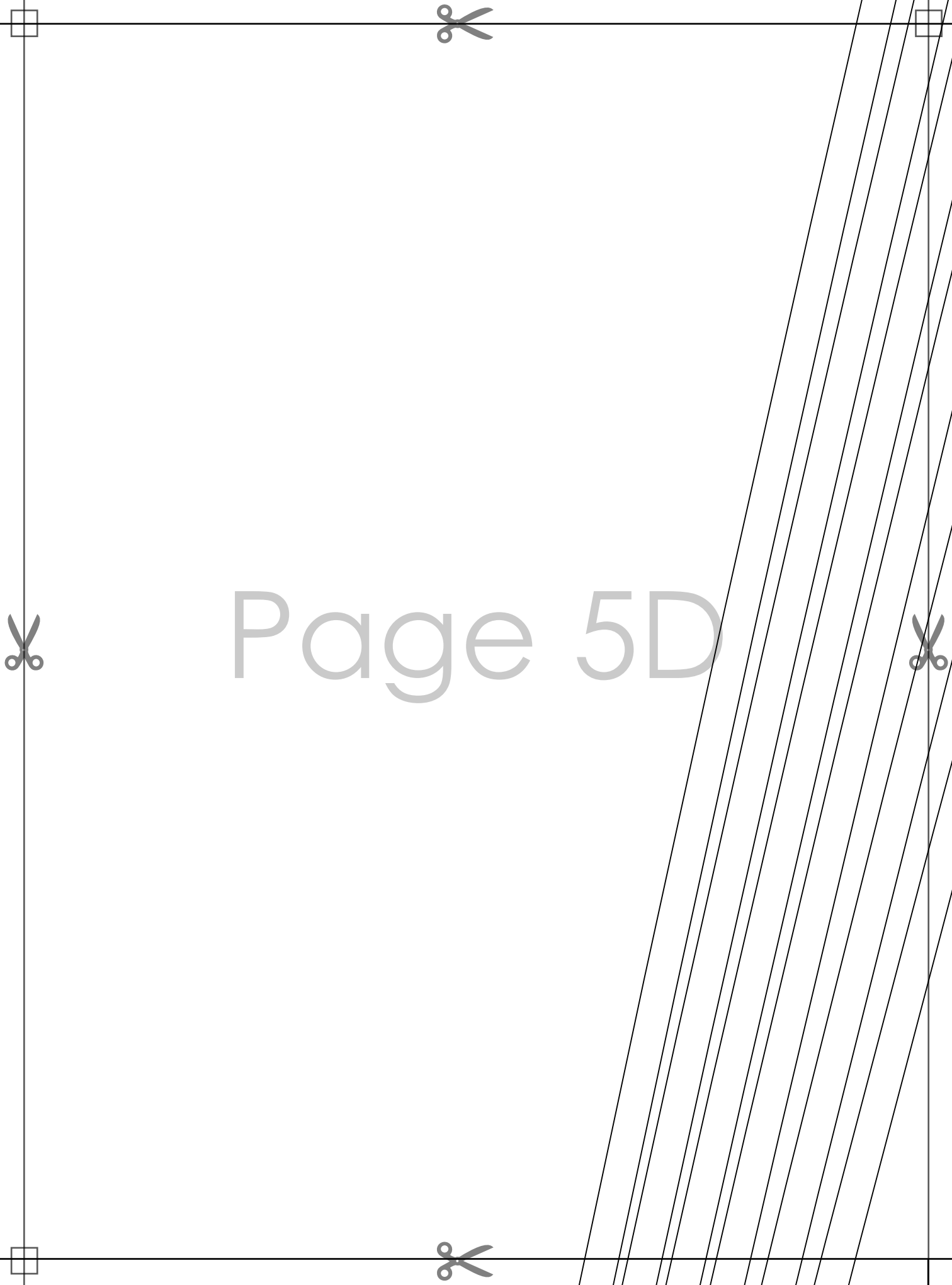
Page 5A



Page 5B



Page 5C



Page 5D





Page 5E



Page 7B

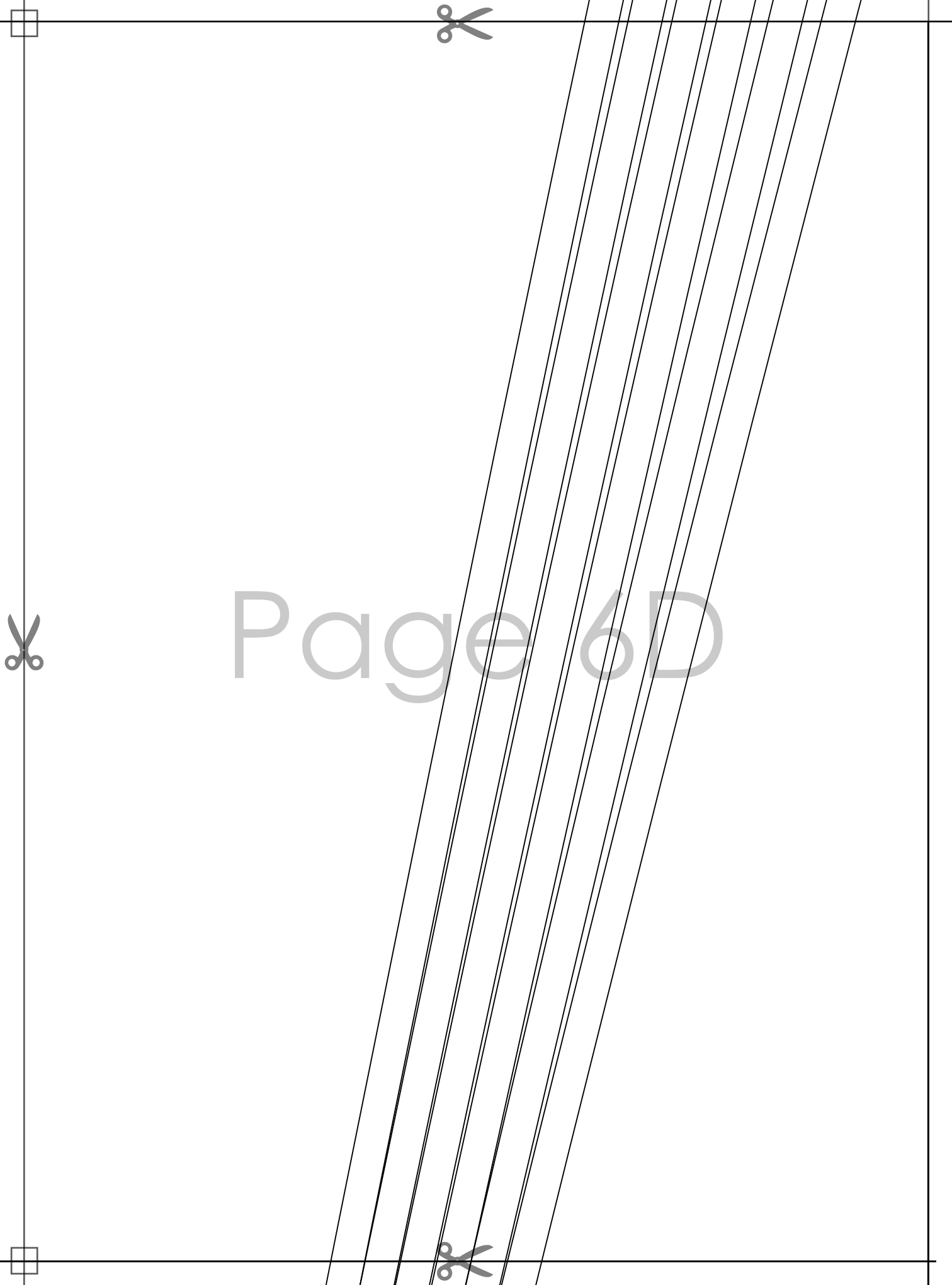
Page 6A



Page 6B



Page 6C

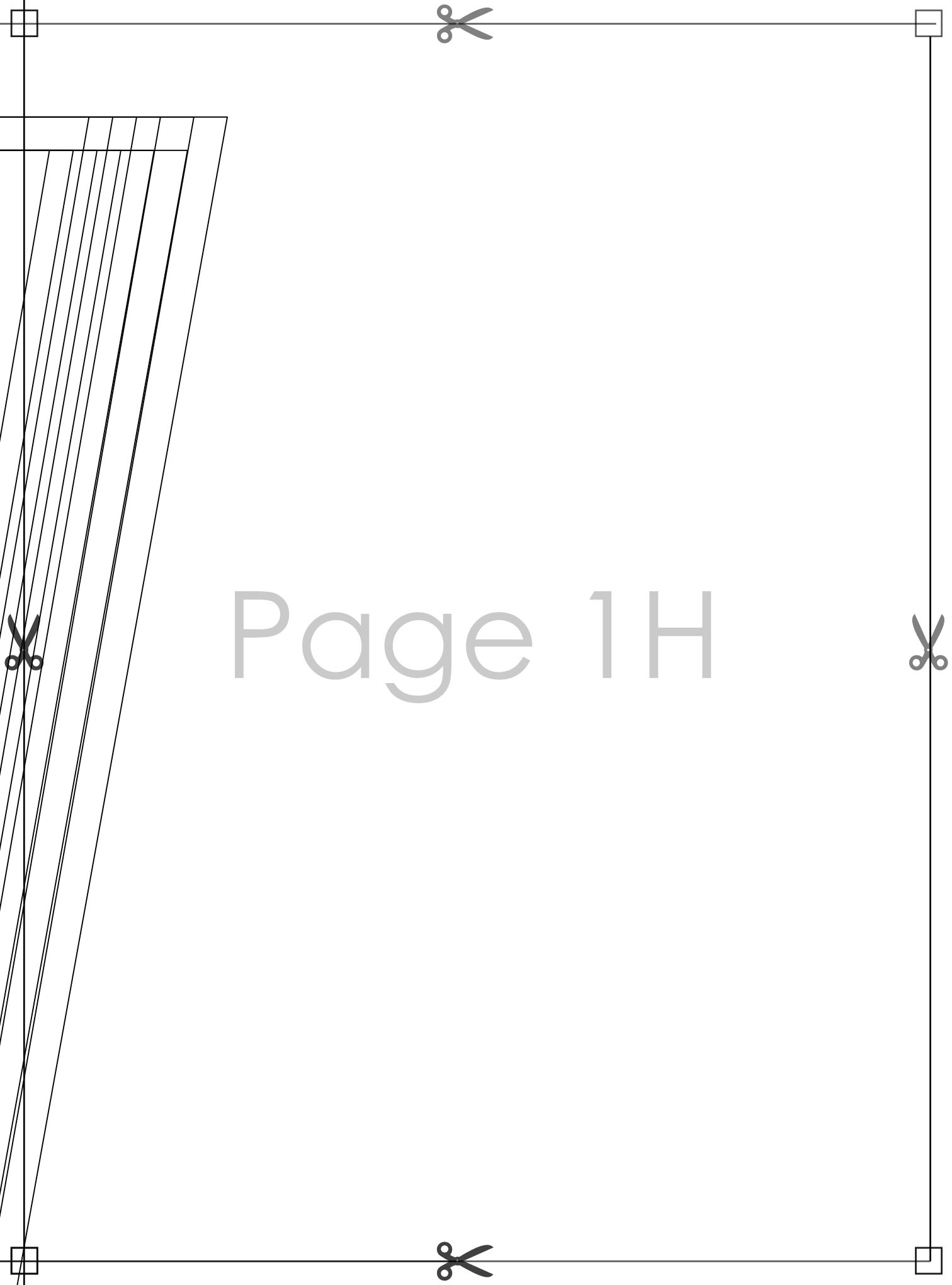


Page 6D



Page 7C





Page 1H





Page 7A





Page 7D